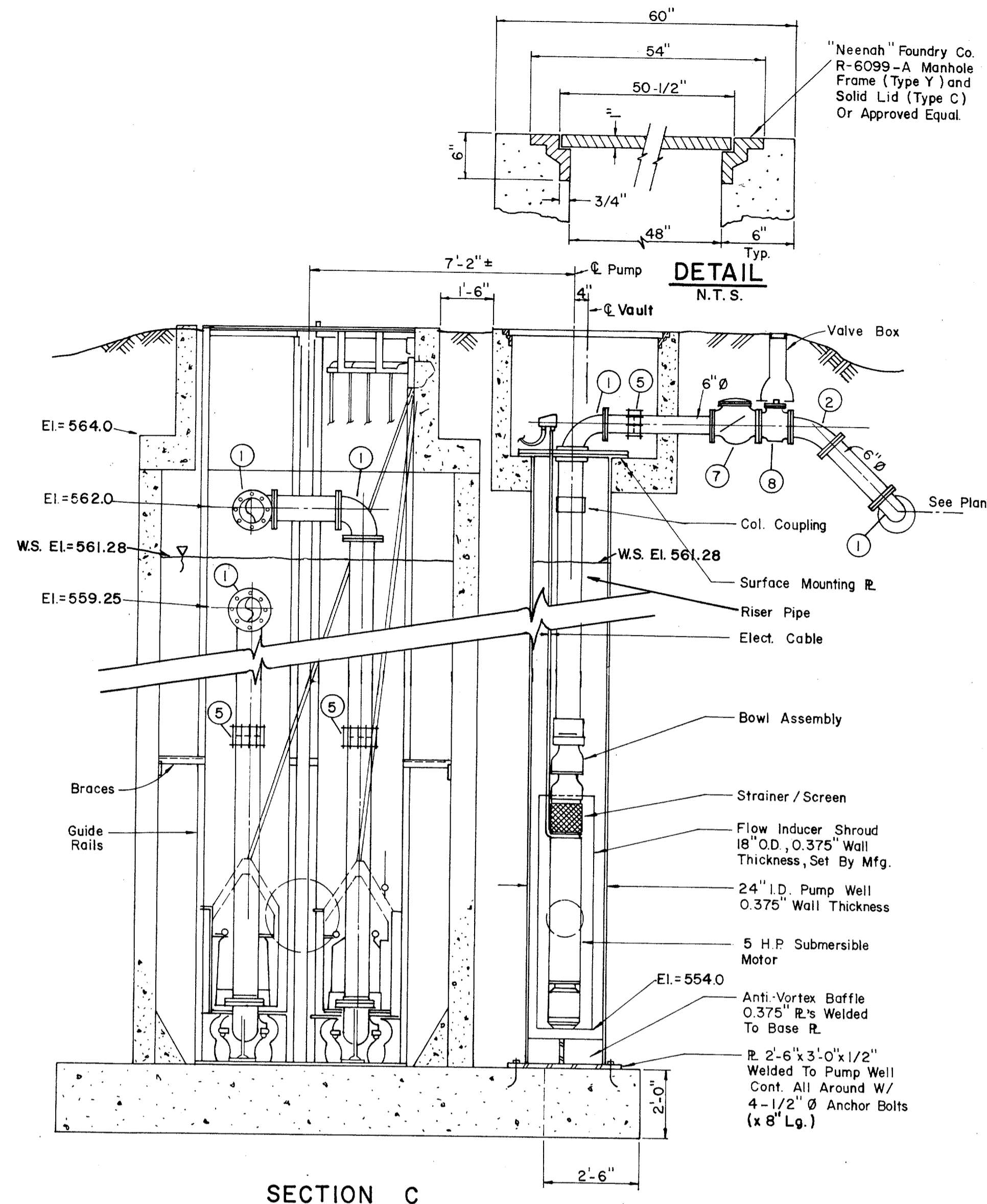
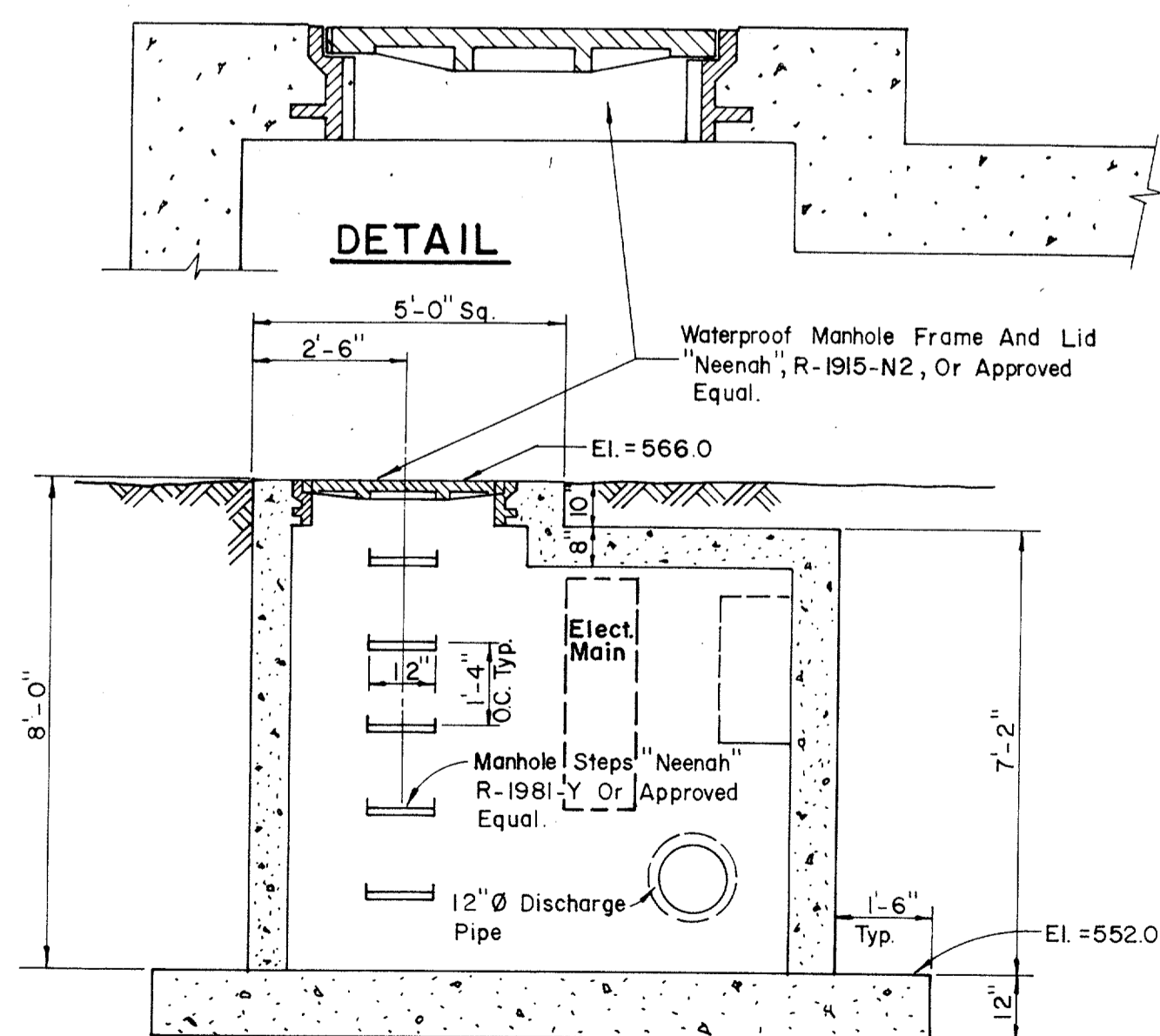


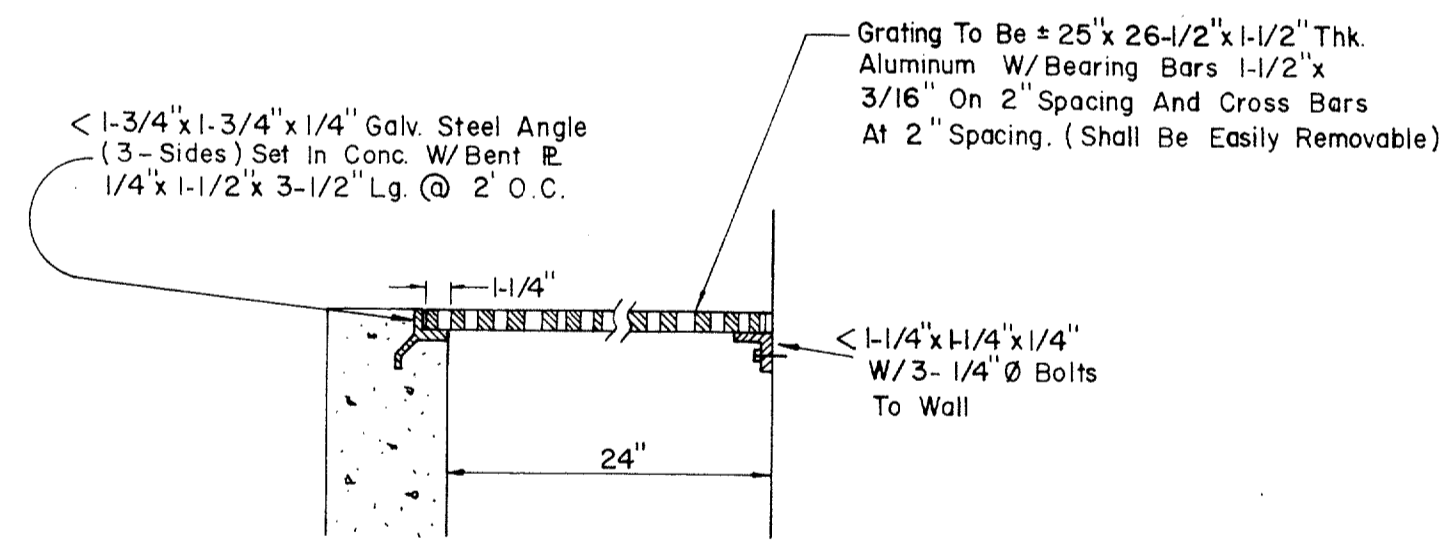
**SECTION B**



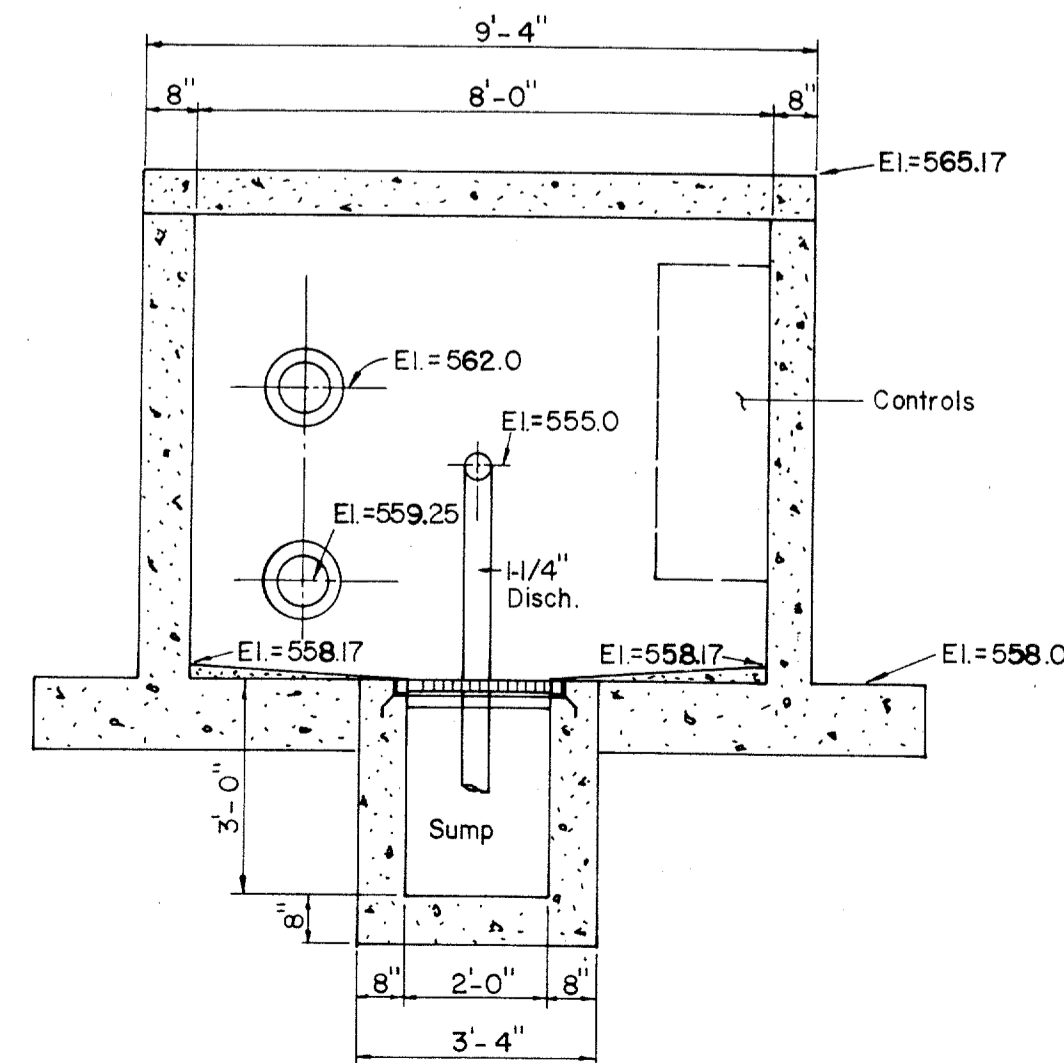
**SECTION C**



**SECTION D**



**DETAIL-SUMP GRATE**



**SECTION E**

**LEGEND**

- ① 90° Bend (Flanged)
- ② 45° Bend (Flanged)
- ③ 8" x 8" x 8" Lateral (Flanged)
- ④ 12" x 8" Reducer (Flanged)
- ⑤ "Dresser" Type Coupling (Size Indicated)
- ⑥ Cast In Place Wall Pipe (Fig. & PE.)
- ⑦ "Clow" F-1426, Or Approved Equal
- ⑦ Check Valve (See Specs.)
- ⑧ Plug Valve (See Specs.)
- ⑨ 1-1/4" Check Valve
- ⑩ 1-1/4" Gate Valve

| No.  | Revision      | By                   | Date           |
|--|---------------|----------------------|----------------|
| TOWN OF ADDISON<br>DALLAS COUNTY, TEXAS<br><b>CREEK SYSTEM IMPROVEMENTS</b><br><b>FINANCE CENTER</b><br><b>PUMP STATION DETAILS</b><br><b>GINN, INC.</b><br>Consulting Engineers Dallas, Texas |               |                      |                |
| Designed - AGF   | Drawn - CL    | Date - DEC. 1988     | Job No. - 369  |
| Approved - HWG   | Checked - RCH | Scale - 3/8" = 1'-0" | Sheet 16 of 21 |