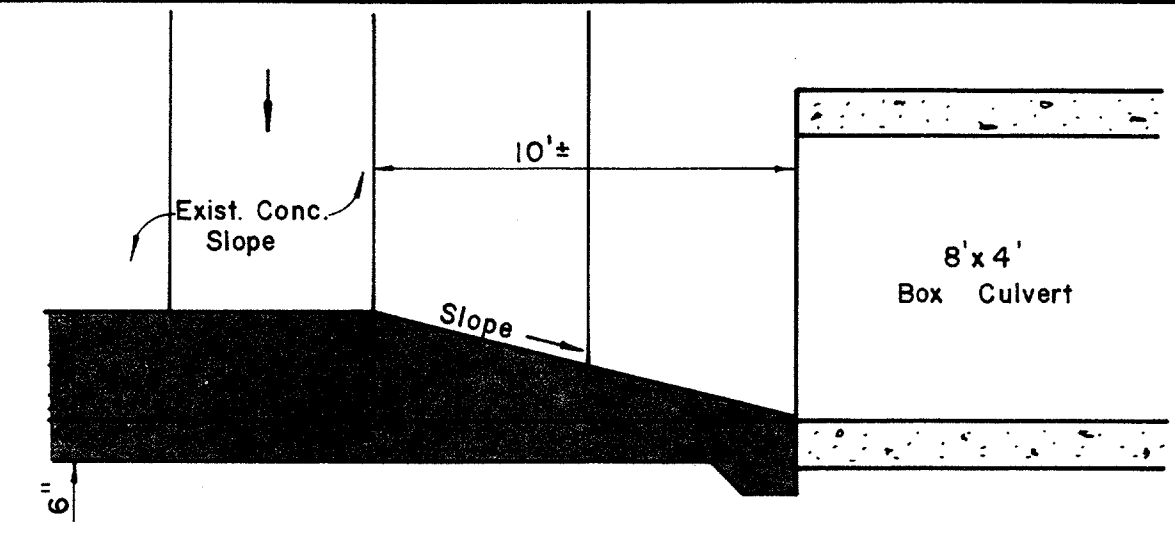
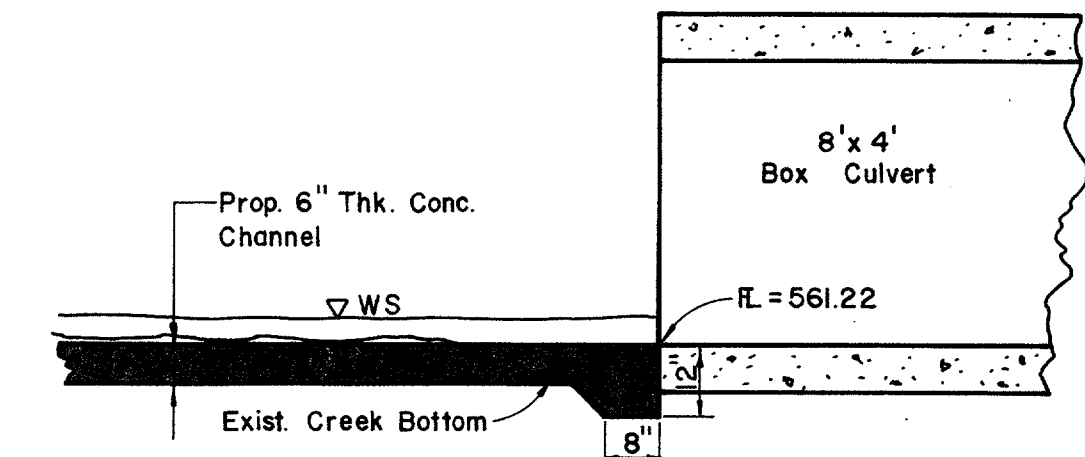


EXISTING CONDITIONS

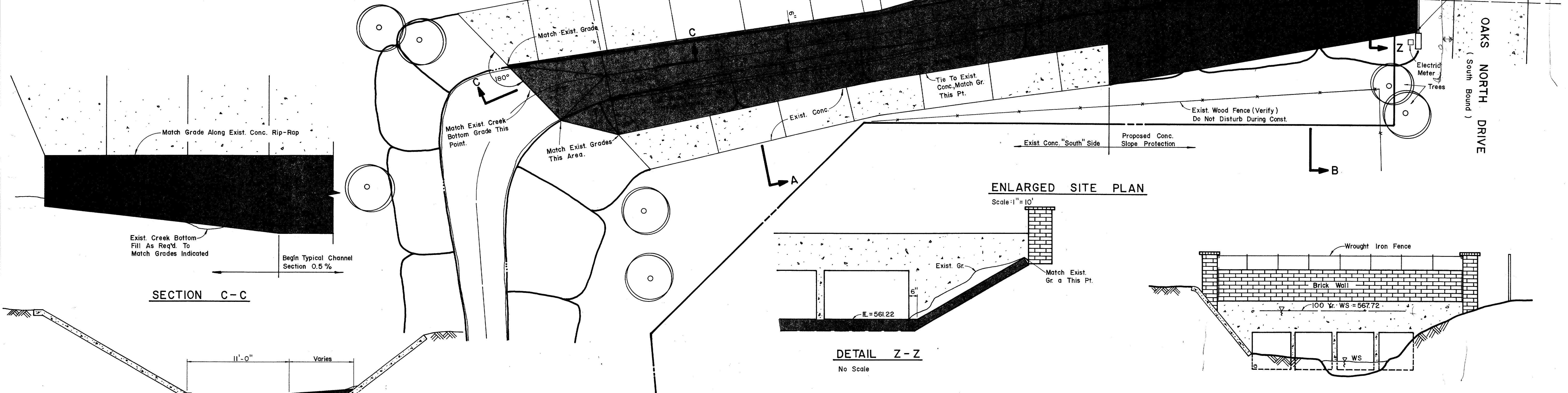
Scale: 1" = 20'
 Verify Exist. Conditions
 Prior To Beginning
 Construction.



SECTION Y-Y
 No Scale



SECTION X-X
DETAIL AT BOX CULVERT
 Scale: 3/8" = 1'

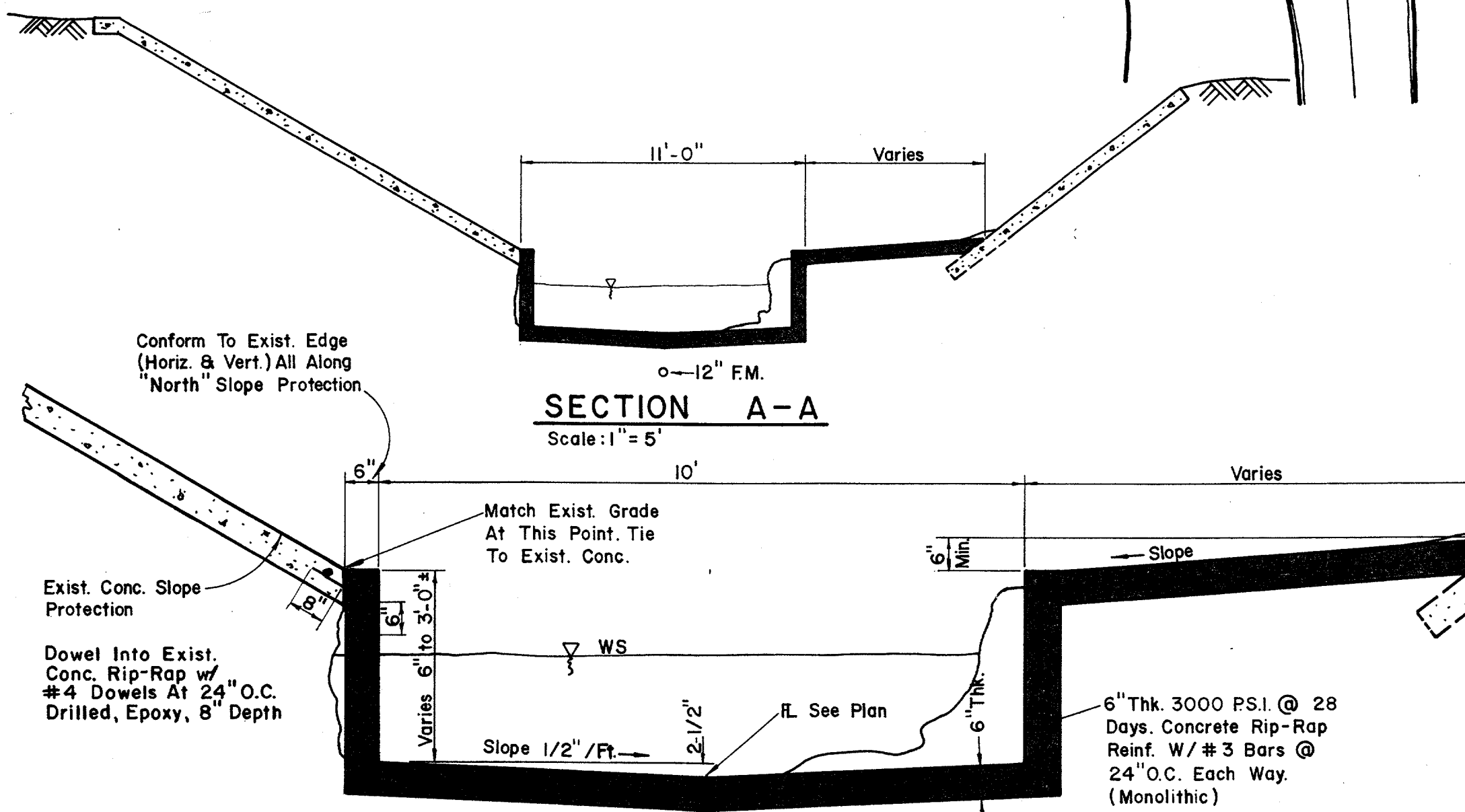


ENLARGED SITE PLAN

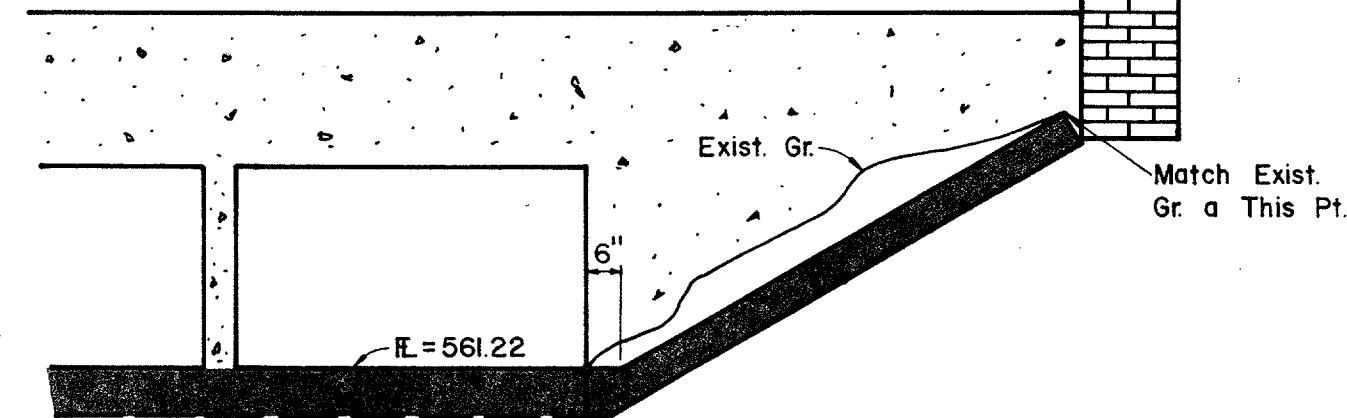
Scale: 1" = 10'

SECTION C-C

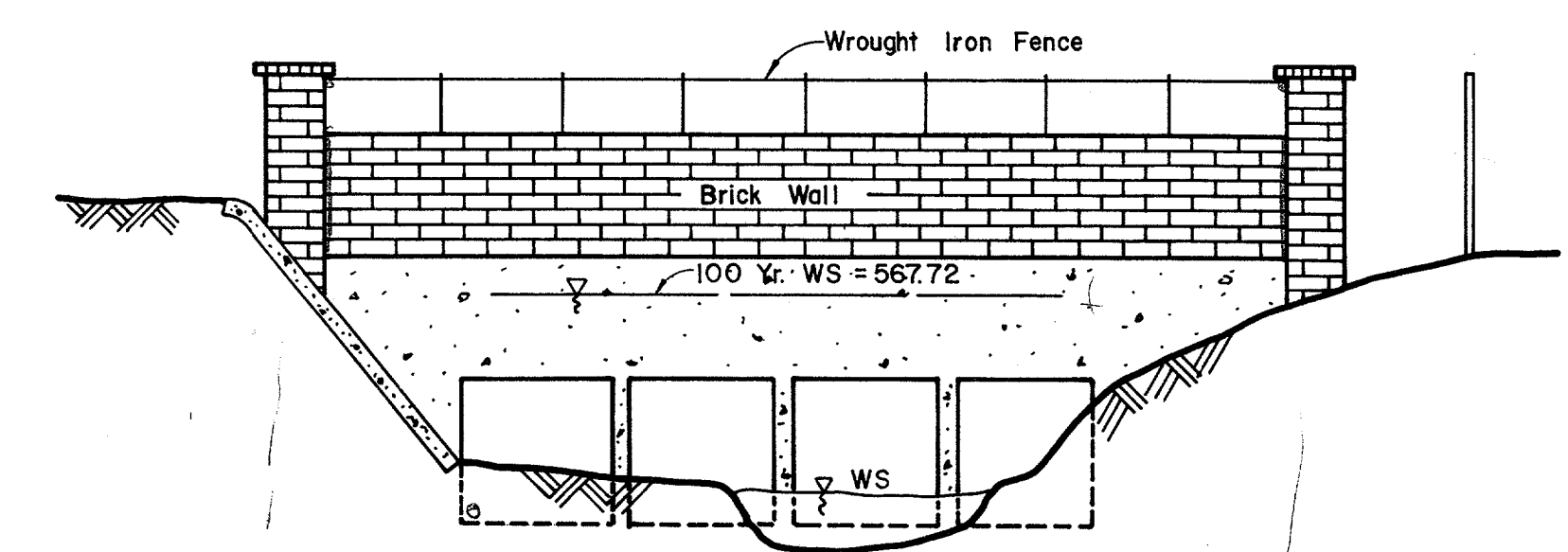
Match Grade Along Exist. Conc. Rip-Rap
 Exist. Creek Bottom
 Fill As Req'd. To
 Match Grades Indicated
 Begin Typical Channel
 Section 0.5 %



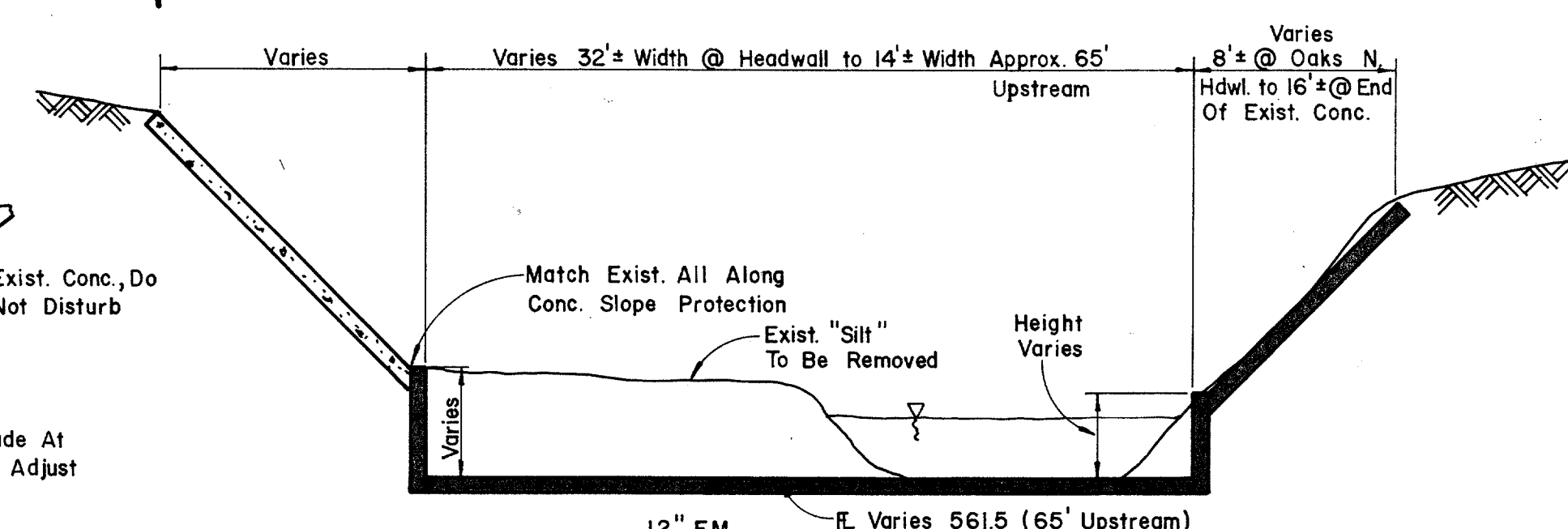
SECTION A-A
 Scale: 1" = 5'



DETAIL Z-Z
 No Scale



EXIST. ELEVATION @ OAKS NORTH DRIVE
 (Looking East) (For Ref. Only)
 No Scale



SECTION B-B
 No Scale

TYPICAL CHANNEL SECTION DETAIL
 Scale: 1/2" = 1'-0"

No.	Revision	By	Date
TOWN OF ADDISON DALLAS COUNTY, TEXAS CREEK SYSTEM IMPROVEMENTS TOWN HALL/OAKS NORTH DRIVE DITCH IMPROVEMENTS GINN, INC. Consulting Engineers Dallas, Texas			
Designed - AGF	Drawn - CL	Date - DEC. 1988	Job No. - 369
Approved - HWG	Checked - RCH	Scale - AS NOTED	Sheet 21 of 21

ADD ALTERNATE NO. I