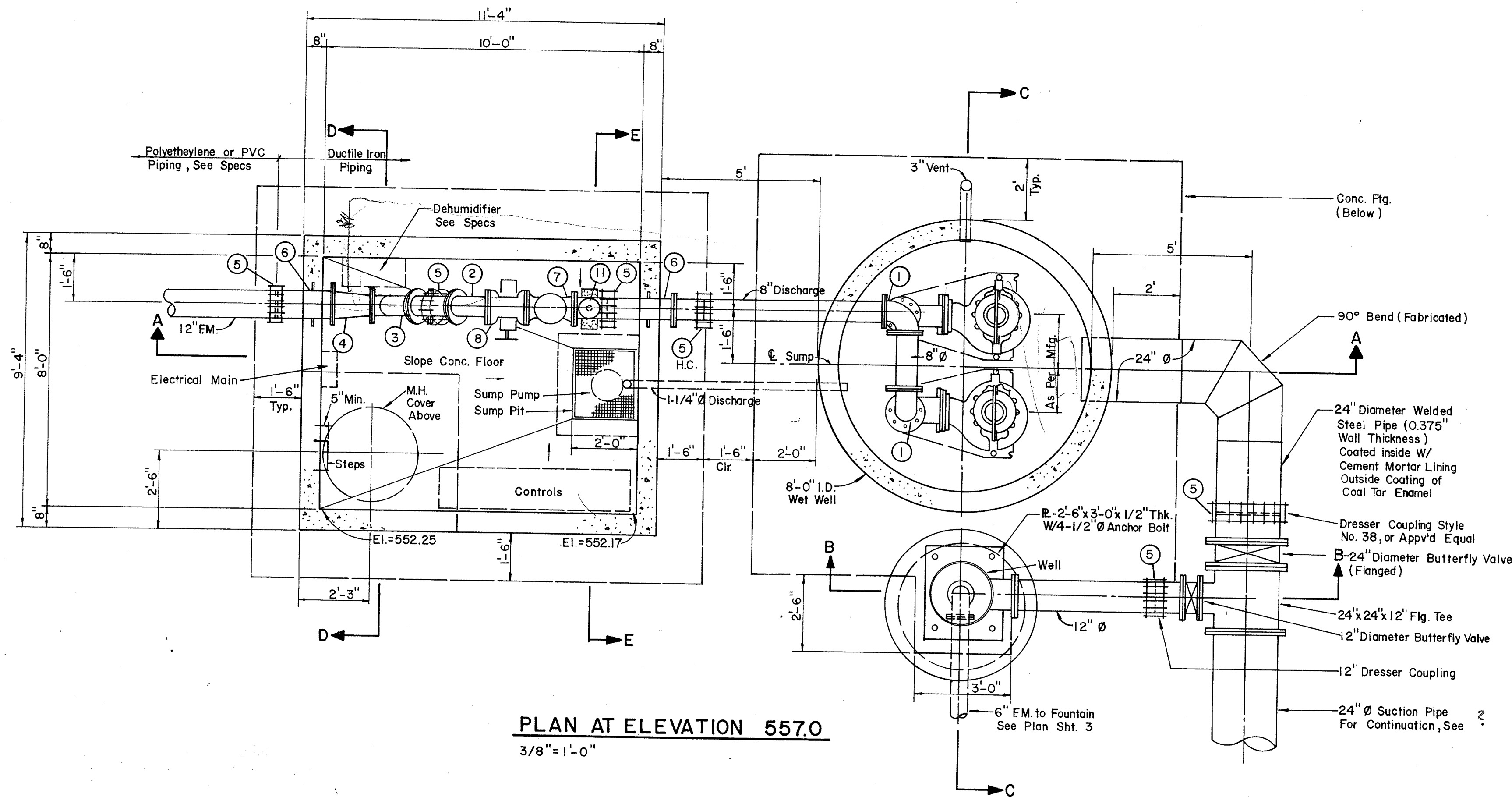


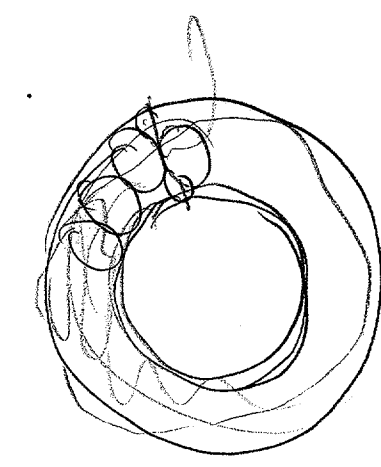
PIPE HANGER DETAIL
NO SCALE



PLAN AT ELEVATION 557.0
3/8" = 1'-0"

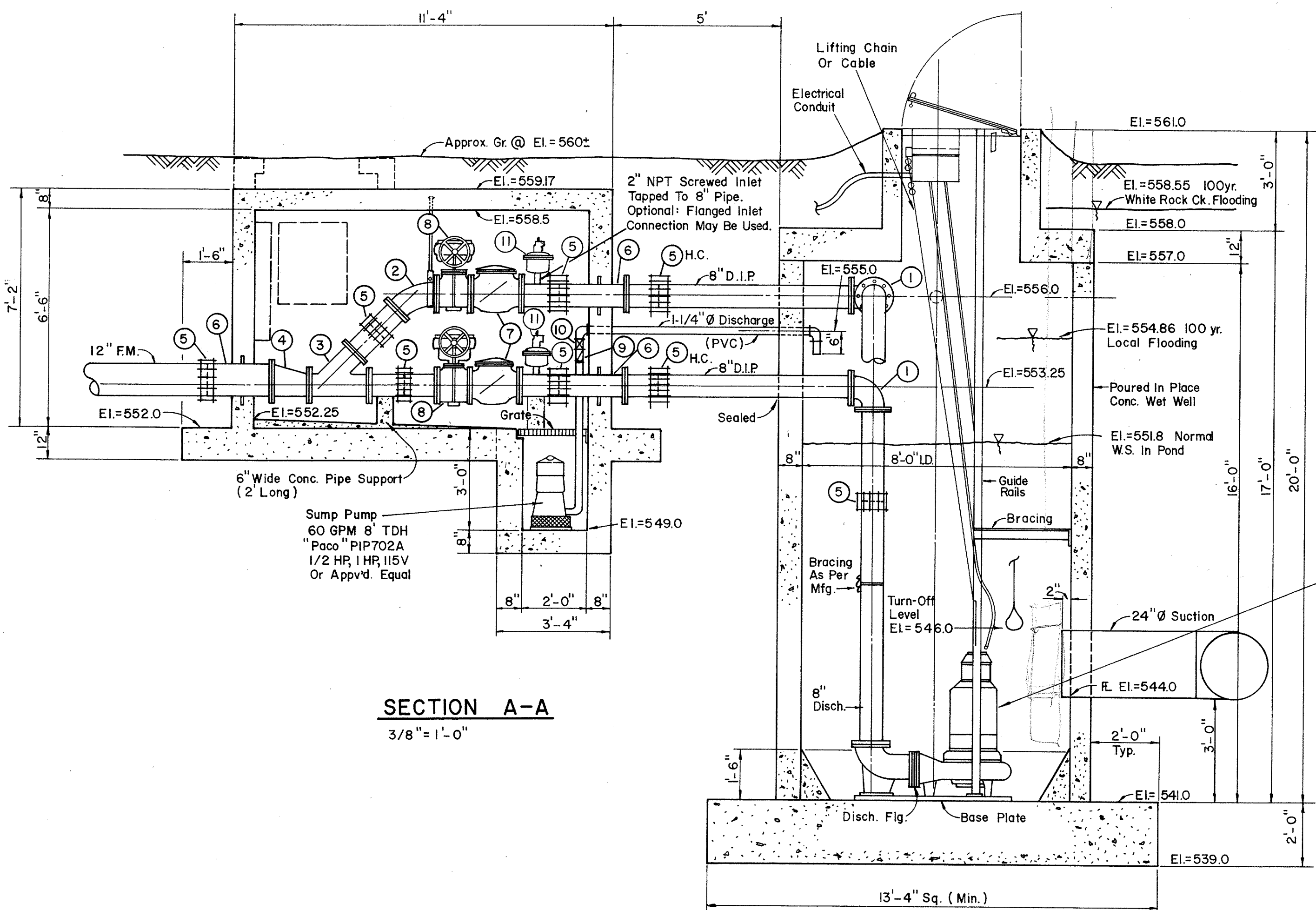
LEGEND

- 1 90° Bend (Flanged)
- 2 45° Bend (Flanged)
- 3 8" x 6" x 8" Lateral (Flanged)
- 4 12" x 8" Reducer (Flanged)
- 5 "Dresser" Type Coupling (Size Indicated)
- 6 Cast In Place Wall Pipe (Fig. & P.E.)
- 7 "Clow" F-1426, Or Approved Equal
- 8 Check Valve (See Specs)
- 9 Plug Valve (See Specs)
- 10 1-1/4" Check Valve
- 11 1-1/4" Gate Valve
- 12 Air Valve "Crispin" Model DL20, 2" Deep Well Air Valve as Manufactured by Multiplex Manufacturing Company, or Approved Equal.



Duplex Pumps "Hydromatic" Submersibles Model SBLX, 870 RPM, 2000 GPM @ 27' TDH (Each) 20 HP, 3PH, 230 V Or Approved Equal.

H.C. = Harness Coupling



SECTION A-A
3/8" = 1'-0"

No.	Revision	By	Date
TOWN OF ADDISON DALLAS COUNTY, TEXAS CREEK SYSTEM IMPROVEMENTS			
WINNWOOD PARK PUMP STATION PLAN AND SECTION			
GINN, INC. Consulting Engineers Dallas, Texas			
Designed - AGF	Drawn - CL	Date - DEC. 1988	Job No. - 369
Approved - HWG	Checked - RCH	Scale - 3/8" = 1'-0"	Sheet 6 Of 21