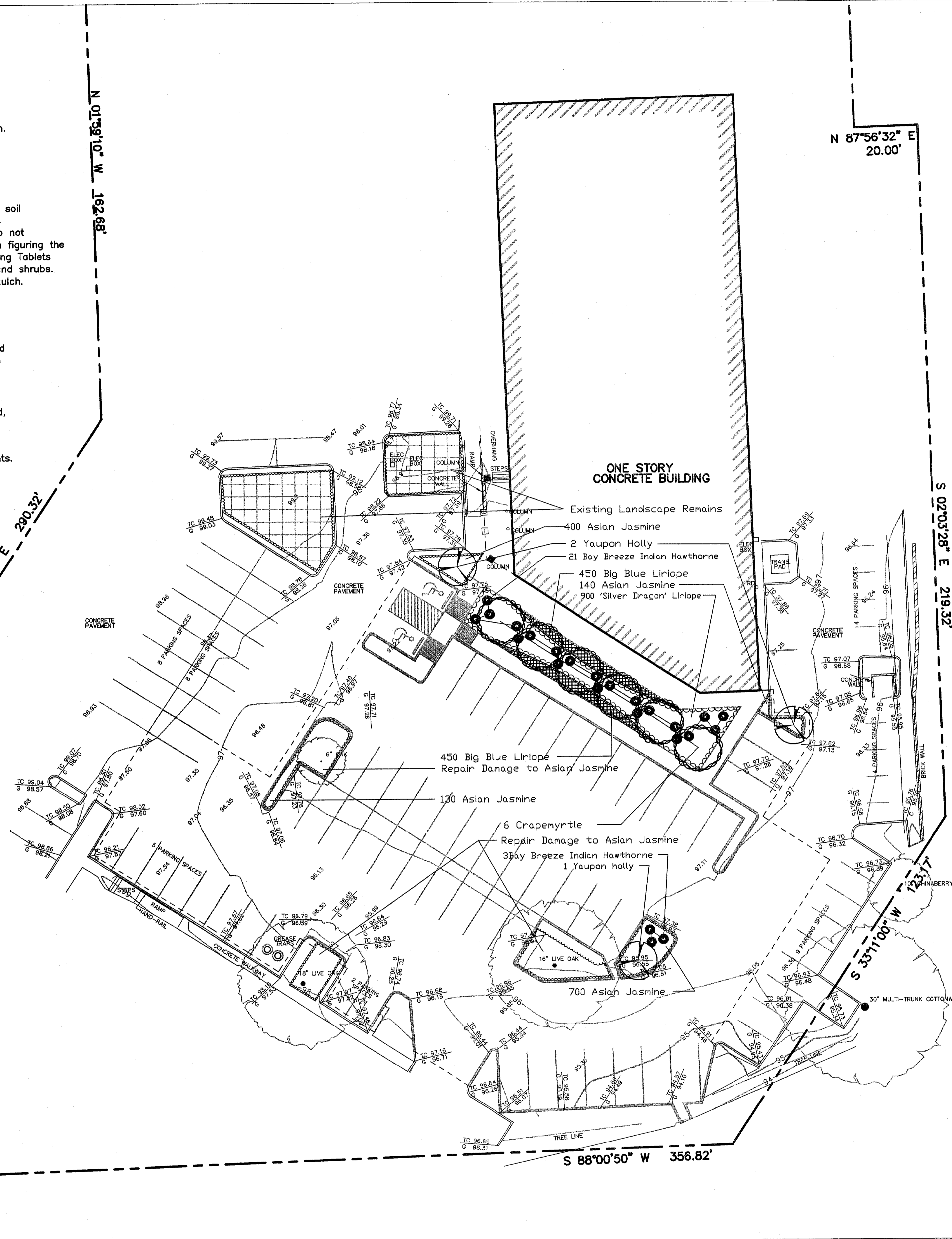


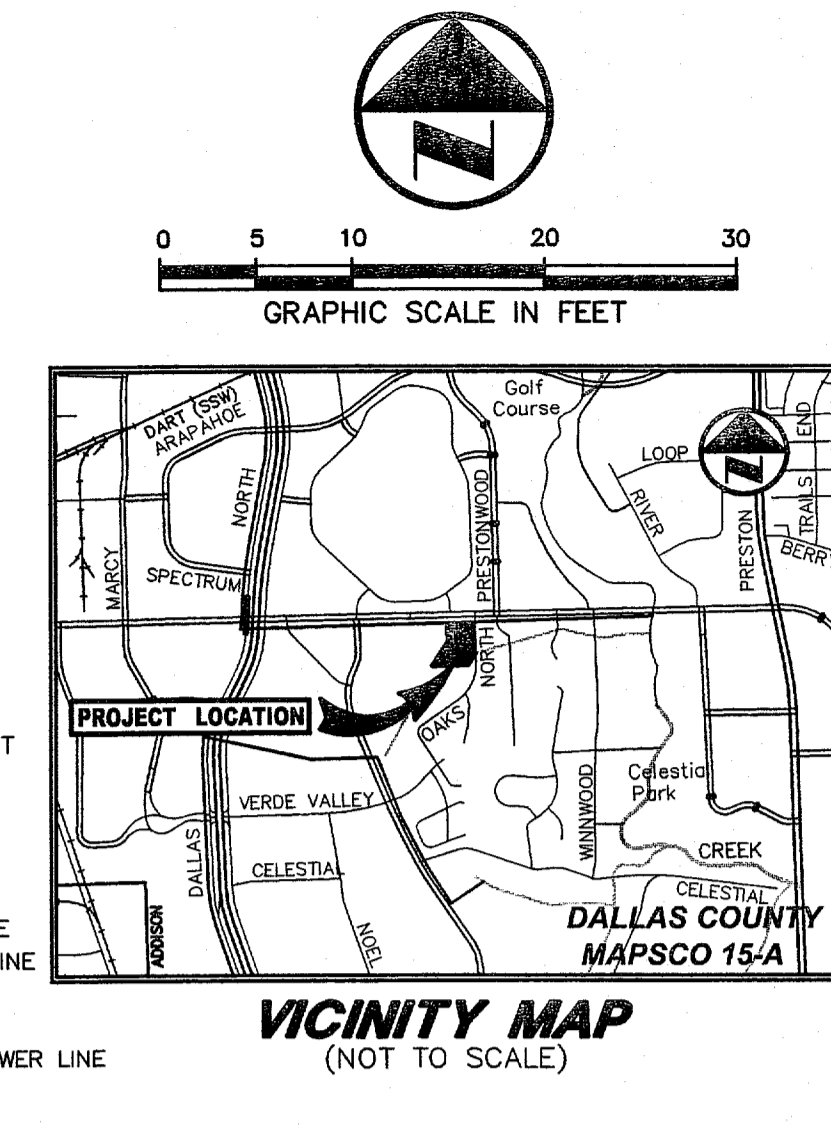
LANDSCAPE NOTES:

- * Quantities on the plant materials list are for the City's use only.
- * Landscape Contractors are responsible for their own quantity takeoffs.
- * All plant materials will be selected by the Owner and/or Landscape Arch.
- * All large and ornamental trees are to be container grown unless B&B is noted on the Plant Materials List.
- * **SOIL PREPARATION FOR PLANTING BEDS:**
Excavate as necessary to remove all weeds, grasses and lime stabilized soil and to provide for 6" of Vital Earth Resources Landscape Mix or equal. Till the excavated area 6" deep prior to adding the Landscape Mix. Do not till the landscape mix into the tilled subsoil. Allow for settlement when figuring the correct depth of Landscape Mix. Install plants and add Agriform Planting Tablets to all plants 1 Gal. container or larger including pocket planted trees and shrubs. Top dress all beds after planting with 2" of medium shred hardwood mulch.
- * Slope all beds up 10% from bed perimeter to center of bed. Be sure not to block the flow of drainage away from buildings or general drainage across the site.
- * All large and small trees are to be staked at planting time unless noted differently on the Plant Materials List. Use 3 iron 7/8" stakes, vinyl hose protectors and double wrapped single strand 12 gauge galvanized steel wire for each 8' "x" post. Drive each stake 2' into the ground and at least 12" outside the tree rootball planting pit.
- * Repair all areas disturbed on this or adjacent sites, unless solid sodded, by grading the site smooth, removing all debris and hydromulching with Common Bermuda or Annual Rye, depending on the season.
- * Refer to Civil Engineer's plans for grading, drainage and utility easements.

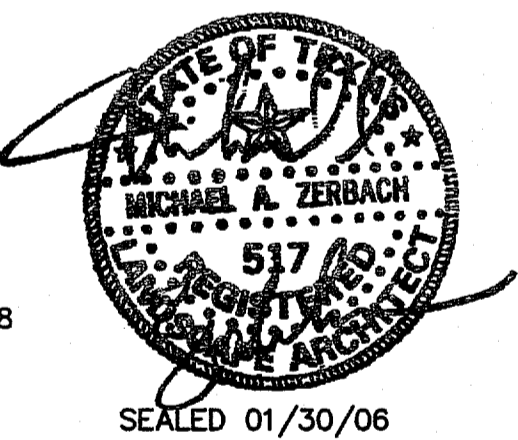


OAK NORTH DRIVE
(A VARIABLE WIDTH RIGHT-OF-WAY)

- LEGEND**
- B. BOLLARD
 - EM ELECTRIC METER
 - PP POWER POLE
 - LS LIGHT STANDARD
 - WM WATER METER
 - WV WATER VALVE
 - ICV IRRIGATION CONTROL VALVE
 - FH FIRE HYDRANT
 - CL CLEANOUT
 - MH MANHOLE
 - TSC TRAFFIC SIGNAL CONTROL
 - TSP TRAFFIC SIGNAL POLE
 - TEL TELEPHONE BOX
 - FL FLOOD LIGHT
 - FP FLAG POLE
 - SIG TRAFFIC SIGN
 - IRS 1/2-INCH IRON ROD W/PACHECO KOCH CAP SET
 - (C.M.) CONTROLLING MONUMENT
 - PROPERTY LINE
 - FENCE
 - OHL OVERHEAD UTILITY LINE
 - E UNDERGROUND ELECTRIC LINE
 - T UNDERGROUND TELEPHONE LINE
 - C UNDERGROUND CABLE LINE
 - 6"W UNDERGROUND WATER LINE
 - 6"SS UNDERGROUND SANITARY SEWER LINE
 - 8"C UNDERGROUND GAS LINE



MICHAEL ZERBACH & ASSOCIATES, INC.
LANDSCAPE ARCHITECTS
1131 COUGAR ROAD
LIPAN, TEXAS 76462
VOICE TELEPHONE NO. 817/599-8838
FAX TELEPHONE NO. 817/596-7400
E MAIL - zerwine@earthlink.net



PLANT MATERIALS LIST

Quantity	Scientific Name	Common Name	Planting Size
3	<i>Ilex vomitoria</i>	Yaupon holly	10' ht., 5' sprd., 3-5 trunks, 1" cal. ea., specimen, canopy begins at 5'
24	<i>Raphiolepis indica</i> 'Bay Breeze'	Bay Breeze Indian Hawthorne	5-Gal., 15' sprd.
6	<i>Lagerstroemia indica</i>	Crapeyrrtle, Tuscarora	10'-12' ht., 5' sprd., 3-5 trunks, 1" cal. ea., canopy begins at 6', matching specimens
900	<i>Liriope spicata</i> 'Silver Dragon'	Silver Dragon Liriope	4' pot, full pots., 12' o.c.
1,370	<i>Trachelospermum asiaticum</i>	Asian Jasmine	4' pots, 3 plants/pot, 8' runners, 3 breaks /runner, 6' o.c.
900	<i>Liriope muscari</i>	Big Blue Liriope	4' pot, full pots, 6' o.c.

02/13/2006 BID/PERMIT ISSUE

NO.	DATE	REVISION

Pacheco Koch Consulting Engineers
8350 N. CENTRAL EXPWY. SUITE 1000 DALLAS, TX. 75206 972.235.3031

LANDSCAPE PLAN
ADDISON TOWN HALL CENTER
TRACT 2
LAKE FOREST ADDITION
TOWN OF ADDISON, TEXAS

DESIGN	DRAWN	DATE	SCALE	NOTES	FILE	NO.
MAZ	MAZ	JAN 2006	1"=20'			LP 1.01

ADDISON TOWN HALL CENTER