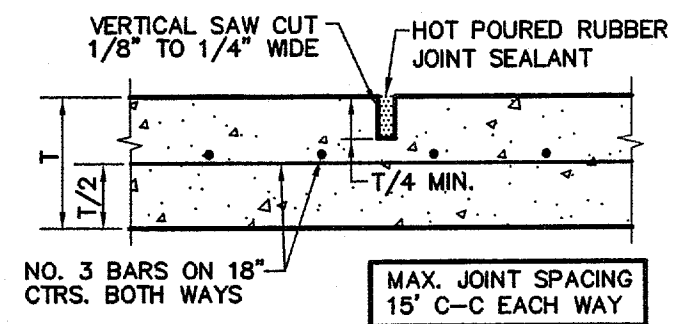
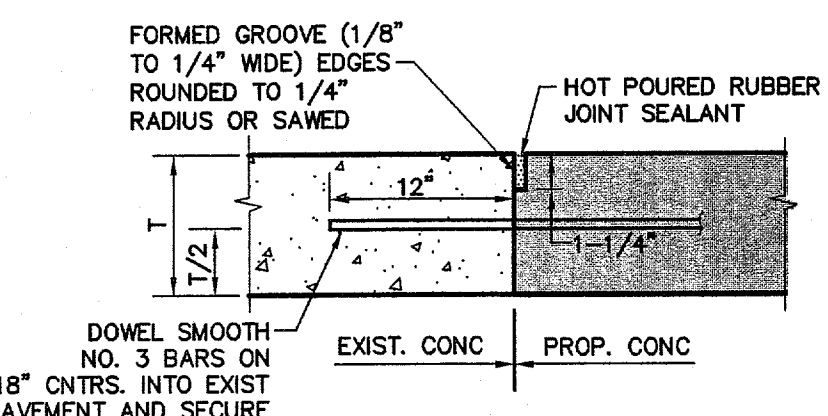


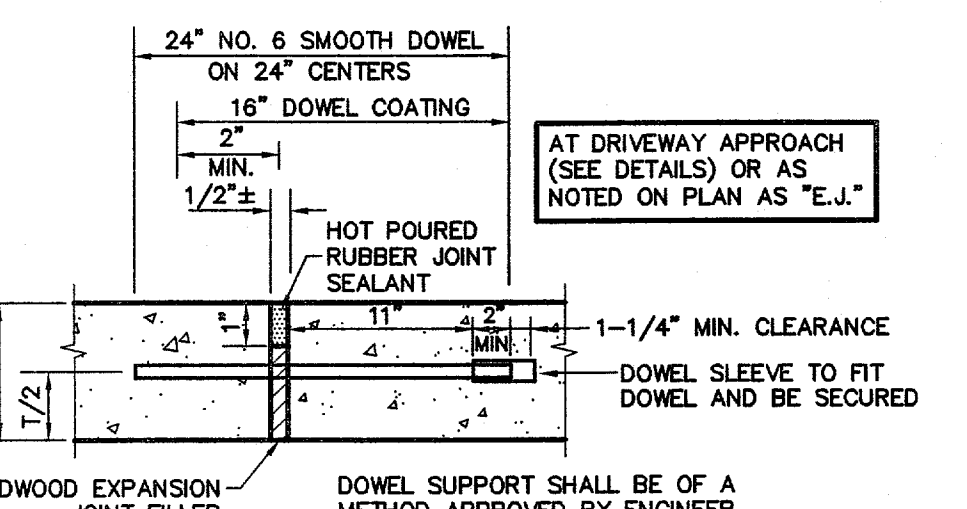
1 CONCRETE PAVEMENT SECTION
NOT TO SCALE



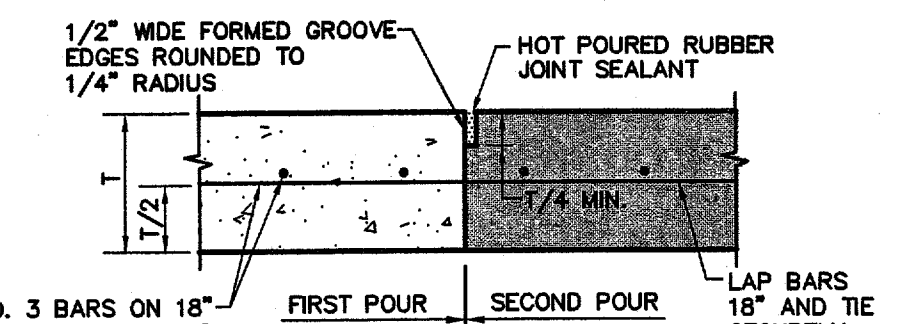
2 SAWED DUMMY JOINT
NOT TO SCALE



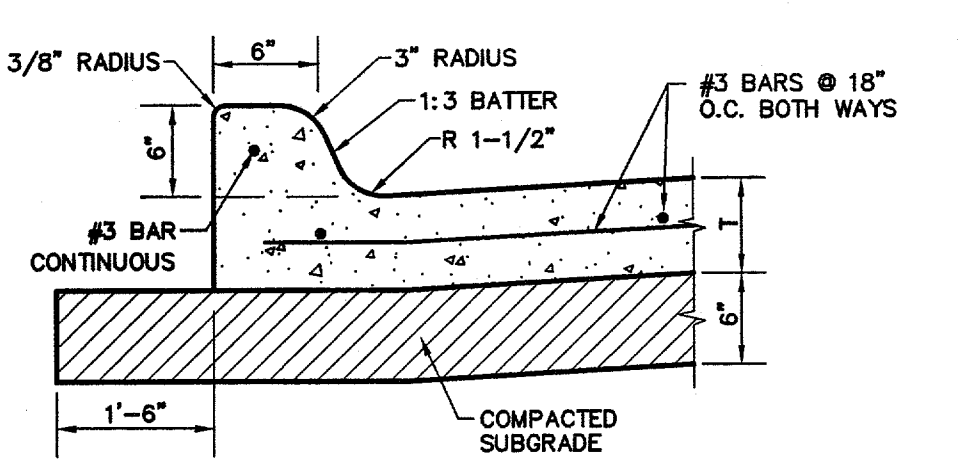
3 PAVEMENT CONNECTION
NOT TO SCALE



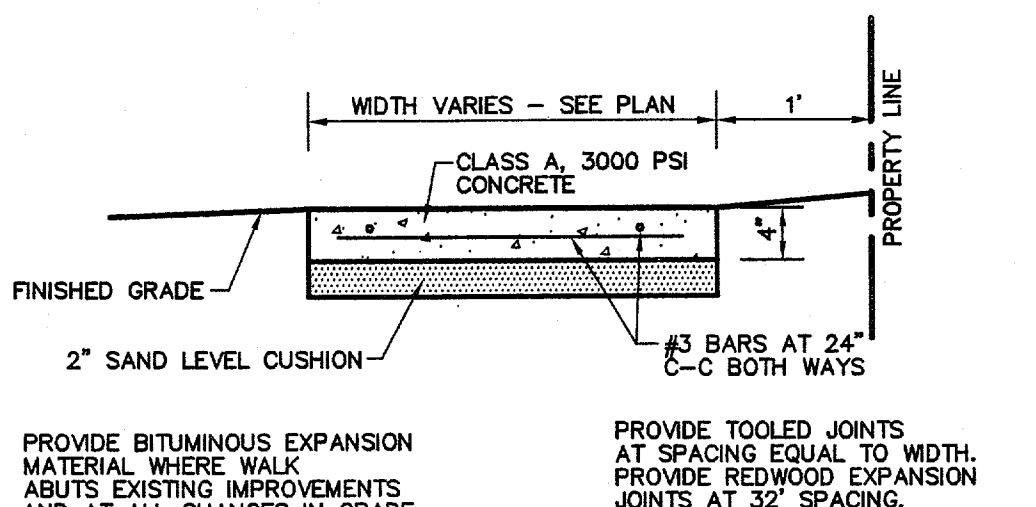
4 EXPANSION JOINT
NOT TO SCALE



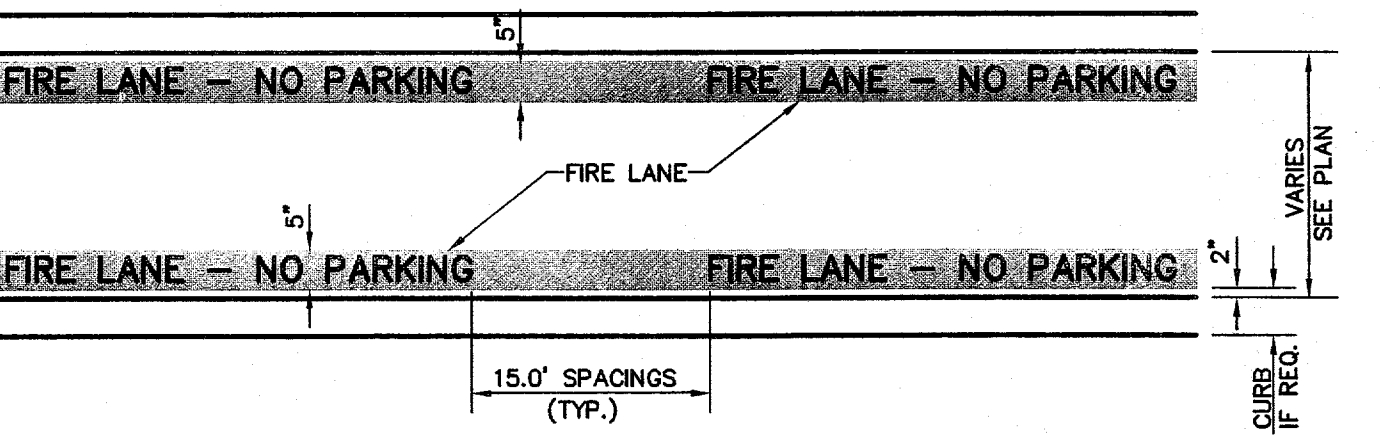
5 CONSTRUCTION JOINT
NOT TO SCALE



6 INTEGRAL CURB
NOT TO SCALE



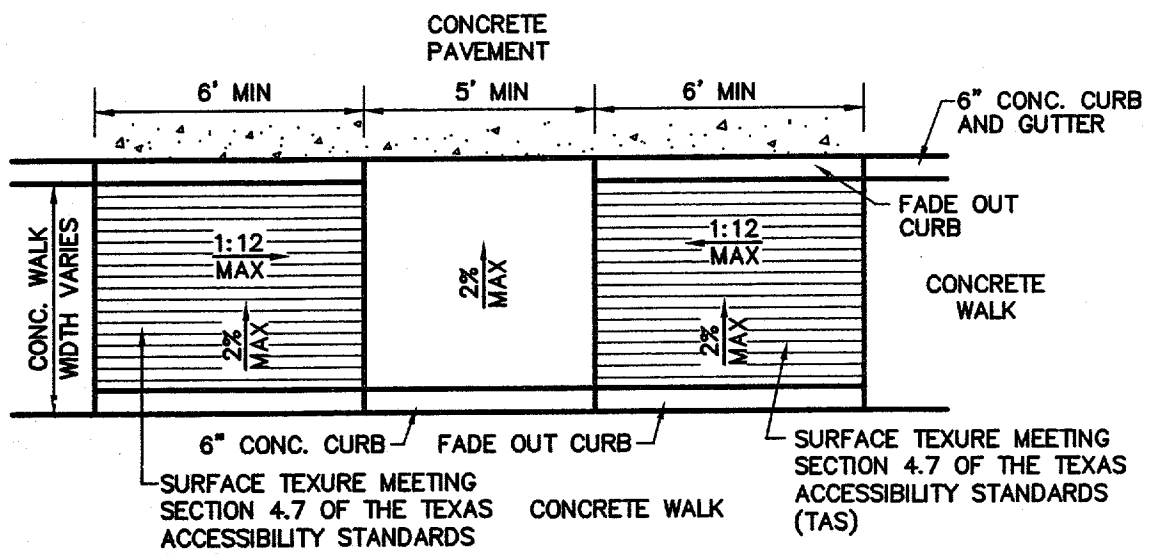
7 CONCRETE WALK
NOT TO SCALE



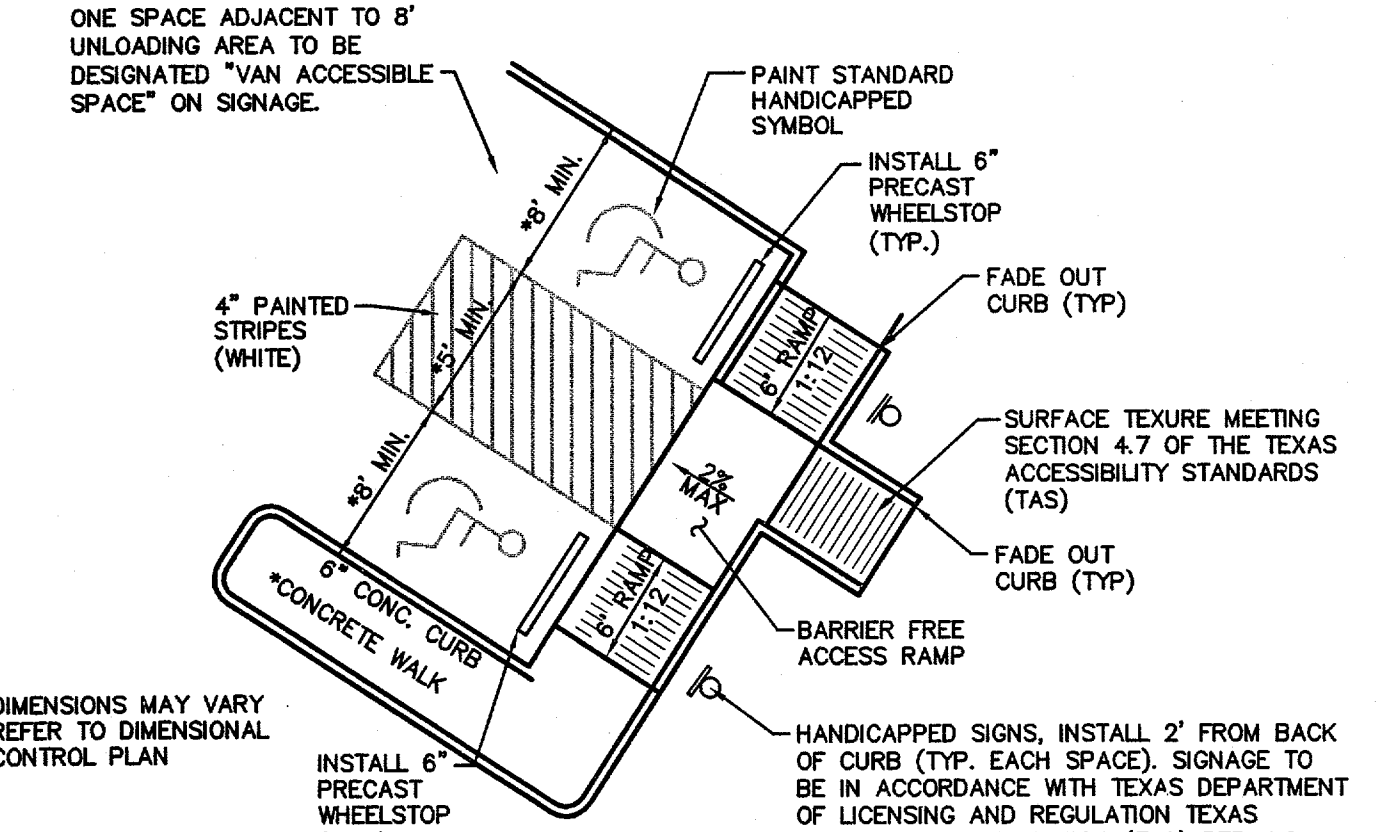
8 FIRE LANE STRIPING
NOT TO SCALE

GENERAL NOTE:
A. STRIPING TO BE DONE IN ACCORDANCE WITH CITY STANDARDS.

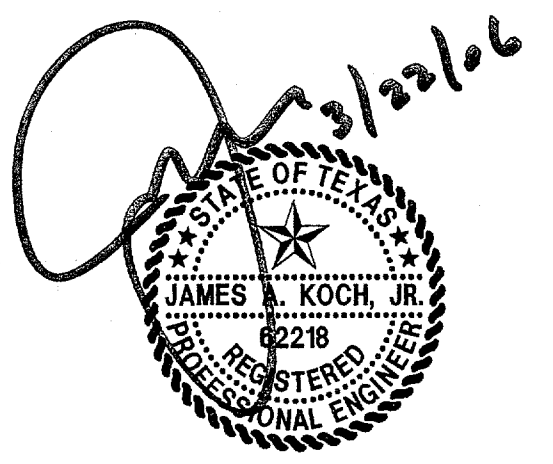
STRIPING DETAIL NOTE:
A. PAINT:
1. STRIPE SHALL BE FIVE (5) INCHES WIDE PAINTED WITH AN EXTERIOR ACRYLIC LATEX PAINT.
A. COLOR SHALL BE "TRAFFIC RED" GLIDDEN NO. 63251 OR EQUAL.
2. LETTERS SHALL BE FOUR (4) INCHES HIGH PAINTED WITH AN EXTERIOR ACRYLIC LATEX PAINT.
B. COLOR SHALL BE "TRAFFIC WHITE" GLIDDEN NO. 563245 OR EQUAL.
B. APPLICATION:
1. STRIPE MAY BE BRUSHED OR SPRAYED, ONE COAT TO FINISH.
2. LETTERS SHALL BE STENCIL FORMED, BRUSH APPLIED AND SPACED AS DETAILED ON THIS SHEET.



9 ACCESS RAMP
NOT TO SCALE



10 HANDICAP PARKING & ACCESS RAMP
NOT TO SCALE



THE SEAL APPEARING ON THIS DOCUMENT WAS AUTHORIZED BY JAMES A. KOCH, JR., P.E. 92218 ON 03/22/2006. ALTERATION OF A SEALED DOCUMENT WITHOUT PROPER NOTIFICATION TO THE RESPONSIBLE ENGINEER IS AN OFFENSE UNDER THE TEXAS ENGINEERING PRACTICE ACT.

NO.	DATE	REVISION				
Pacheco Koch Consulting Engineers 8350 N. CENTRAL EXP'WY. SUITE 1000 DALLAS, TX. 75206 972.236.3031						
PAVING DETAILS ADDISON TOWN HALL CENTER TRACT 2 LAKE FOREST ADDITION TOWN OF ADDISON, TEXAS						
DESIGN	DRAWN	DATE	SCALE	NOTES	FILE	NO.
KFW	KFW	JAN 2006	1"=20'			C5.2