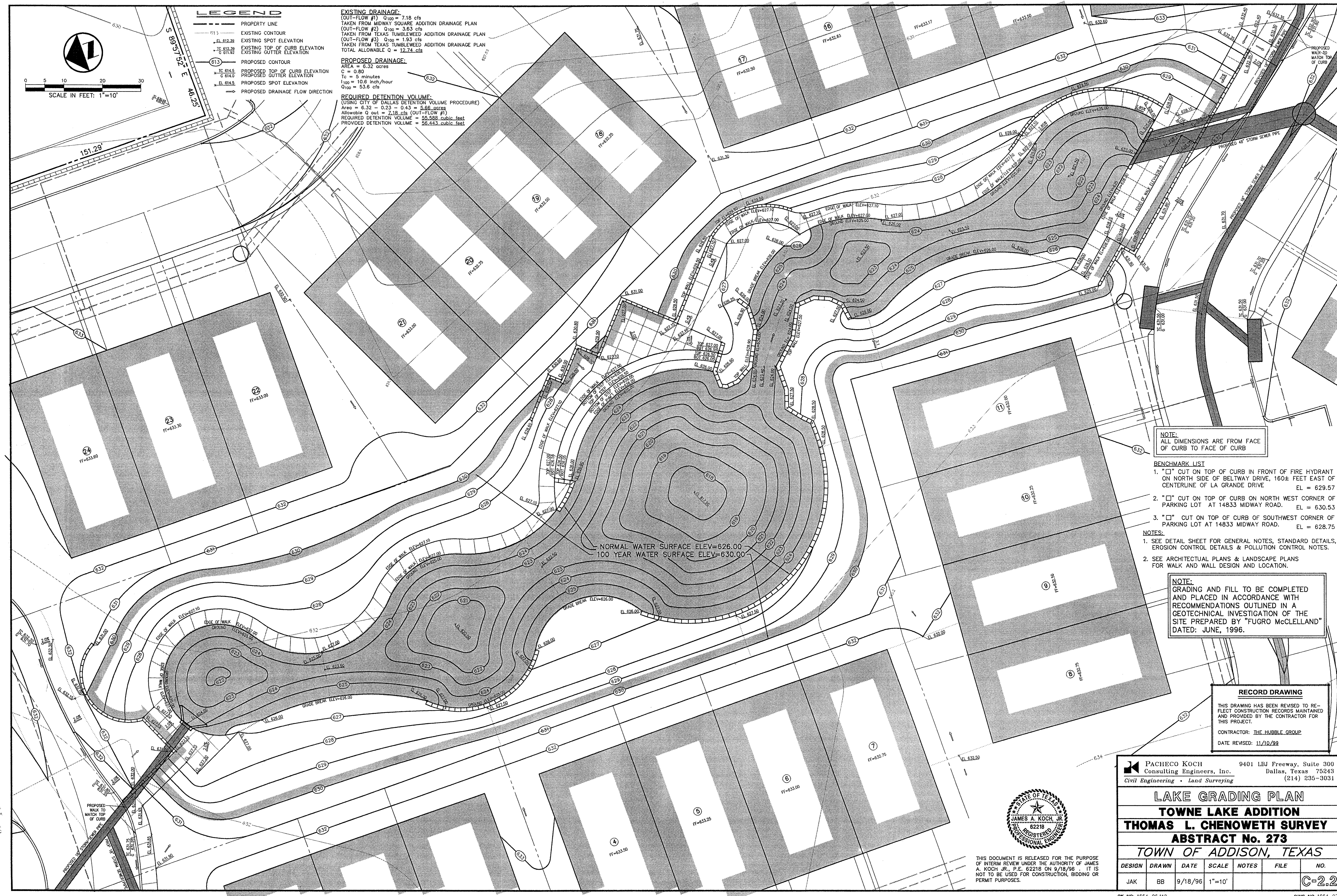


- LEGEND**
- PROPERTY LINE
  - - - - - EXISTING CONTOUR
  - EL 612.39 EXISTING SPOT ELEVATION
  - TC 612.39 EXISTING TOP OF CURB ELEVATION
  - C 611.92 EXISTING GUTTER ELEVATION
  - 613 PROPOSED CONTOUR
  - TC 614.5 PROPOSED TOP OF CURB ELEVATION
  - G 614.0 PROPOSED GUTTER ELEVATION
  - EL 614.5 PROPOSED SPOT ELEVATION
  - PROPOSED DRAINAGE FLOW DIRECTION

**EXISTING DRAINAGE:**  
 (OUT-FLOW #1)  $Q_{100} = 7.18$  cfs  
 TAKEN FROM MIDWAY SQUARE ADDITION DRAINAGE PLAN  
 (OUT-FLOW #2)  $Q_{100} = 3.63$  cfs  
 TAKEN FROM TEXAS TUMBLEWEED ADDITION DRAINAGE PLAN  
 (OUT-FLOW #3)  $Q_{100} = 1.93$  cfs  
 TAKEN FROM TEXAS TUMBLEWEED ADDITION DRAINAGE PLAN  
 TOTAL ALLOWABLE  $Q = 12.74$  cfs

**PROPOSED DRAINAGE:**  
 AREA = 6.32 acres  
 $C = 0.80$   
 $T_c = 5$  minutes  
 $I_{100} = 10.6$  inch/hour  
 $Q_{100} = 53.6$  cfs

**REQUIRED DETENTION VOLUME:**  
 (USING CITY OF DALLAS DETENTION VOLUME PROCEDURE)  
 AREA = 6.32 - 0.23 = 0.43 = 5.86 ACRES  
 Allowable  $Q_{out} = 7.18$  cfs (OUT-FLOW #1)  
 REQUIRED DETENTION VOLUME = 55,528 cubic feet  
 PROVIDED DETENTION VOLUME = 56,443 cubic feet



NOTE:  
 ALL DIMENSIONS ARE FROM FACE OF CURB TO FACE OF CURB

- BENCHMARK LIST**
1. "□" CUT ON TOP OF CURB IN FRONT OF FIRE HYDRANT ON NORTH SIDE OF BELTWAY DRIVE, 160± FEET EAST OF CENTERLINE OF LA GRANDE DRIVE EL = 629.57
  2. "□" CUT ON TOP OF CURB ON NORTH WEST CORNER OF PARKING LOT AT 14833 MIDWAY ROAD. EL = 630.53
  3. "□" CUT ON TOP OF CURB OF SOUTHWEST CORNER OF PARKING LOT AT 14833 MIDWAY ROAD. EL = 628.75

- NOTES:**
1. SEE DETAIL SHEET FOR GENERAL NOTES, STANDARD DETAILS, EROSION CONTROL DETAILS & POLLUTION CONTROL NOTES.
  2. SEE ARCHITECTURAL PLANS & LANDSCAPE PLANS FOR WALK AND WALL DESIGN AND LOCATION.

NOTE:  
 GRADING AND FILL TO BE COMPLETED AND PLACED IN ACCORDANCE WITH RECOMMENDATIONS OUTLINED IN A GEOTECHNICAL INVESTIGATION OF THE SITE PREPARED BY "FUGRO McCLELLAND" DATED: JUNE, 1996.

**RECORD DRAWING**

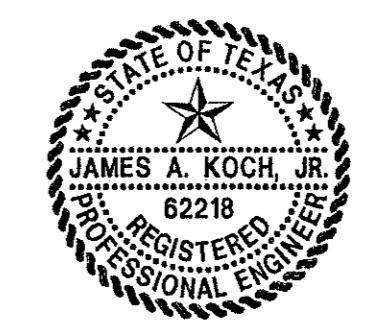
THIS DRAWING HAS BEEN REVISED TO REFLECT CONSTRUCTION RECORDS MAINTAINED AND PROVIDED BY THE CONTRACTOR FOR THIS PROJECT.

CONTRACTOR: THE HUBBLE GROUP  
 DATE REVISED: 11/10/99

PACHECO KOCH Consulting Engineers, Inc. 9401 LBJ Freeway, Suite 300 Dallas, Texas 75243  
 Civil Engineering • Land Surveying (214) 235-3031

**LAKE GRADING PLAN**  
**TOWNE LAKE ADDITION**  
**THOMAS L. CHENOWETH SURVEY**  
**ABSTRACT No. 273**  
**TOWN OF ADDISON, TEXAS**

DESIGN	DRAWN	DATE	SCALE	NOTES	FILE	NO.
JAK	BB	9/18/96	1"=10'			C=2.2



THIS DOCUMENT IS RELEASED FOR THE PURPOSE OF INTERIM REVIEW UNDER THE AUTHORITY OF JAMES A. KOCH JR., P.E. 62218 ON 9/18/96. IT IS NOT TO BE USED FOR CONSTRUCTION, BIDDING OR PERMIT PURPOSES.