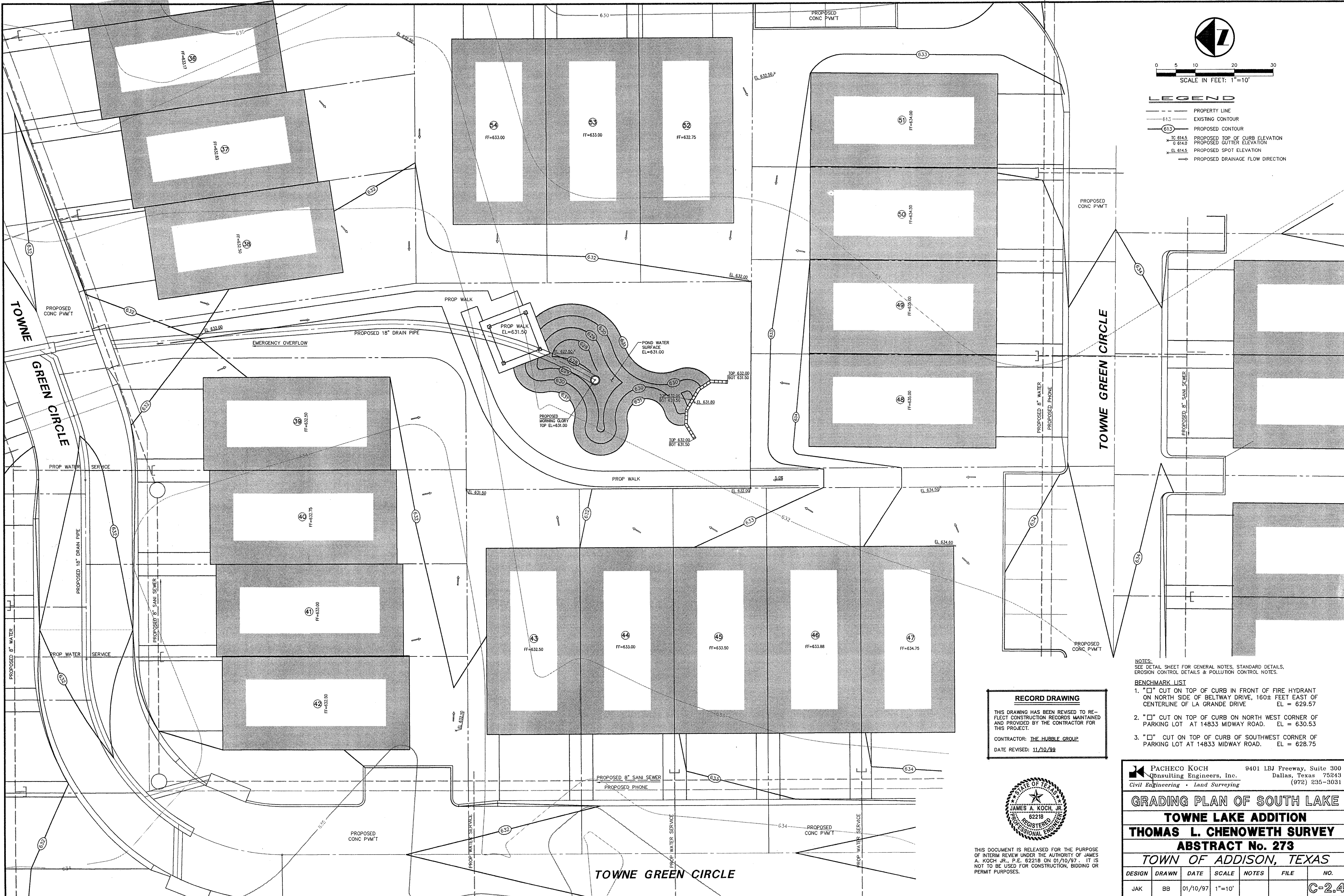




- LEGEND**
- PROPERTY LINE
 - - - EXISTING CONTOUR
 - PROPOSED CONTOUR
 - TO 614.5 PROPOSED TOP OF CURB ELEVATION
 - 614.0 PROPOSED GUTTER ELEVATION
 - EL 614.5 PROPOSED SPOT ELEVATION
 - PROPOSED DRAINAGE FLOW DIRECTION



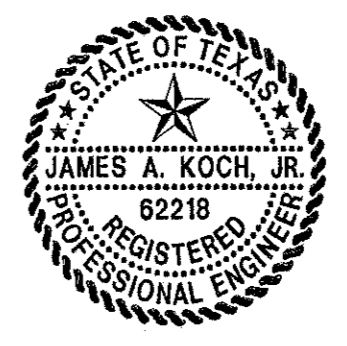
NOTES:
SEE DETAIL SHEET FOR GENERAL NOTES, STANDARD DETAILS, EROSION CONTROL DETAILS & POLLUTION CONTROL NOTES.

- BENCHMARK LIST**
1. "□" CUT ON TOP OF CURB IN FRONT OF FIRE HYDRANT ON NORTH SIDE OF BELTWAY DRIVE, 160± FEET EAST OF CENTERLINE OF LA GRANDE DRIVE EL = 629.57
 2. "□" CUT ON TOP OF CURB ON NORTH WEST CORNER OF PARKING LOT AT 14833 MIDWAY ROAD. EL = 630.53
 3. "□" CUT ON TOP OF CURB OF SOUTHWEST CORNER OF PARKING LOT AT 14833 MIDWAY ROAD. EL = 628.75

RECORD DRAWING

THIS DRAWING HAS BEEN REVISED TO REFLECT CONSTRUCTION RECORDS MAINTAINED AND PROVIDED BY THE CONTRACTOR FOR THIS PROJECT.

CONTRACTOR: THE HUBBLE GROUP
DATE REVISED: 11/10/99



THIS DOCUMENT IS RELEASED FOR THE PURPOSE OF INTERIM REVIEW UNDER THE AUTHORITY OF JAMES A. KOCH, JR., P.E. 62218 ON 01/10/97. IT IS NOT TO BE USED FOR CONSTRUCTION, BIDDING OR PERMIT PURPOSES.

PACHECO KOCH Consulting Engineers, Inc. 9401 LBJ Freeway, Suite 300 Dallas, Texas 75243 (972) 235-3031
Civil Engineering • Land Surveying

GRADING PLAN OF SOUTH LAKE
TOWNE LAKE ADDITION
THOMAS L. CHENOWETH SURVEY
ABSTRACT No. 273
TOWN OF ADDISON, TEXAS

DESIGN	DRAWN	DATE	SCALE	NOTES	FILE	NO.
JAK	BB	01/10/97	1"=10'			C-2.4