

LOT 1, BLK 1  
MIDWAY SQUARE ADDITION  
(VOL. 93252, PG. 3095)

A MOTEL ADDITION  
(VOL. 79219, PG. 181)

PART OF  
LOT 1, BLOCK 1  
TEXAS TUMBLEWEED ADDITION  
(VOL. 94117, PG. 6143)

STA 2+42.80 LINE "B"  
INSTALL:  
1- 4" DIA. MANHOLE  
PER CITY STDS

STA 0+00 LINE "A" & "B"  
INSTALL:  
STD 4" DIA. MANHOLE  
PER CITY STDS  
MATCH EXISTING E  
PLUG LINE TO WEST

STA 10+87.11 LINE "B"  
INSTALL:  
1- 4" DIA. MANHOLE  
PER CITY STDS

STA 9+36.28 LINE "B"  
INSTALL:  
1- 4" DIA. MANHOLE  
PER CITY STDS

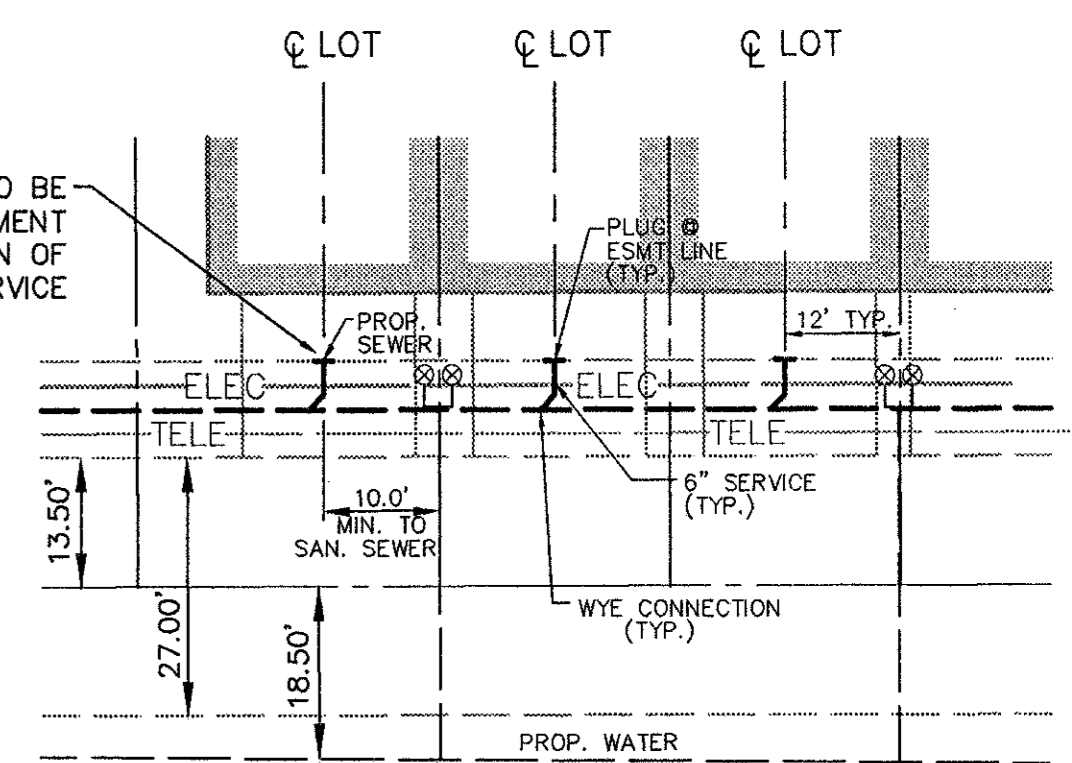
STA 4+32.16 LINE "B"  
INSTALL:  
1- 4" DIA. MANHOLE  
PER CITY STDS

STA 5+07.14 LINE "B"  
INSTALL:  
1- 4" DIA. MANHOLE  
PER CITY STDS

STA 7+33.53 LINE "B"  
INSTALL:  
1- 4" DIA. MANHOLE  
PER CITY STDS

**LEGEND**

- PH FIRE HYDRANT
- PP POWER POLE
- LS LIGHT STANDARD
- WM WATER METER
- WV WATER VALVE
- CL CLEANOUT
- MH MANHOLE
- GM GAS METER
- PROPERTY LINE
- - - - - INDICATES 6" CONCRETE CURB
- - - - - INDICATES 18" CONCRETE CURB



**TYPICAL SERVICE LATERAL DETAIL**

CLEAN-OUT TO BE  
INSTALL AT EASEMENT  
LINE UPON EXTENSION OF  
SANITARY SEWER SERVICE

- CAUTION!!!**  
GAS LINE IN AREA-CONTACT  
ONE STAR GAS 48 HOURS  
PRIOR TO CONSTRUCTION  
PHONE: 263-3444
- CONTACT:**  
MR ED KEAH, OPERATING SUPPORT SECTION  
DISTRIBUTION DEPARTMENT, 2 WORKING  
DAYS PRIOR TO EXCAVATING TLU ELECTRIC  
FACILITIES.  
PHONE: 698-7239 OR 698-7207
- CAUTION!!!**  
UNDERGROUND TELEPHONE  
IN AREA - CONTACT S.W.B.T.  
48 HOURS PRIOR TO CONSTRUCTION  
PHONE: 698-7239 (UNDERGROUND)  
PHONE: 698-7240 (OVER-HEAD)

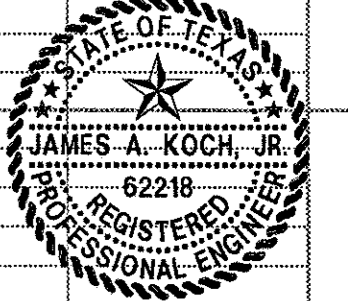
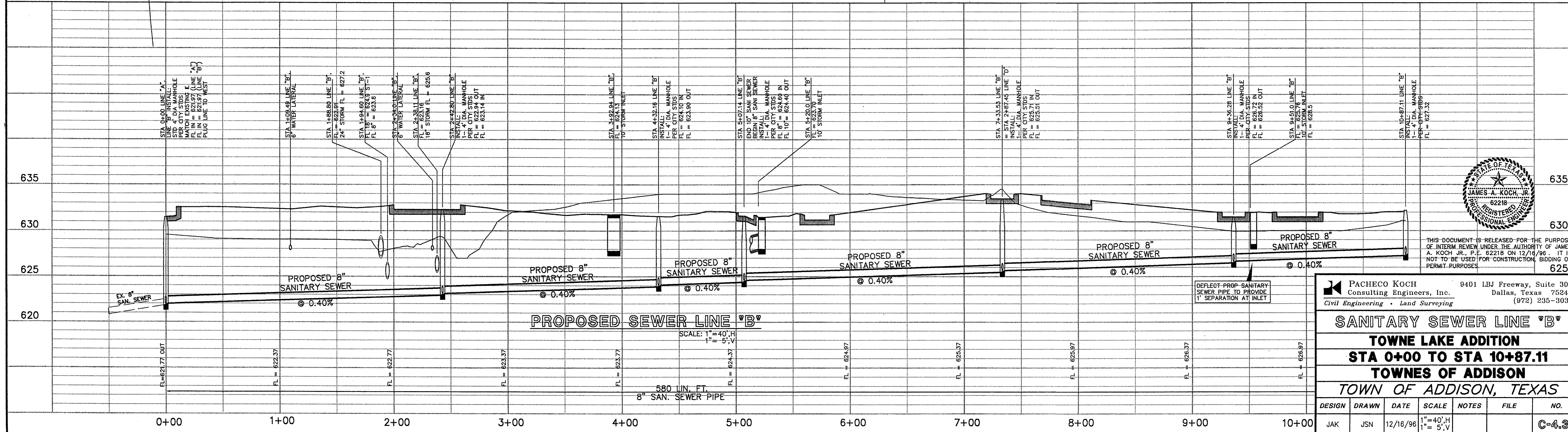
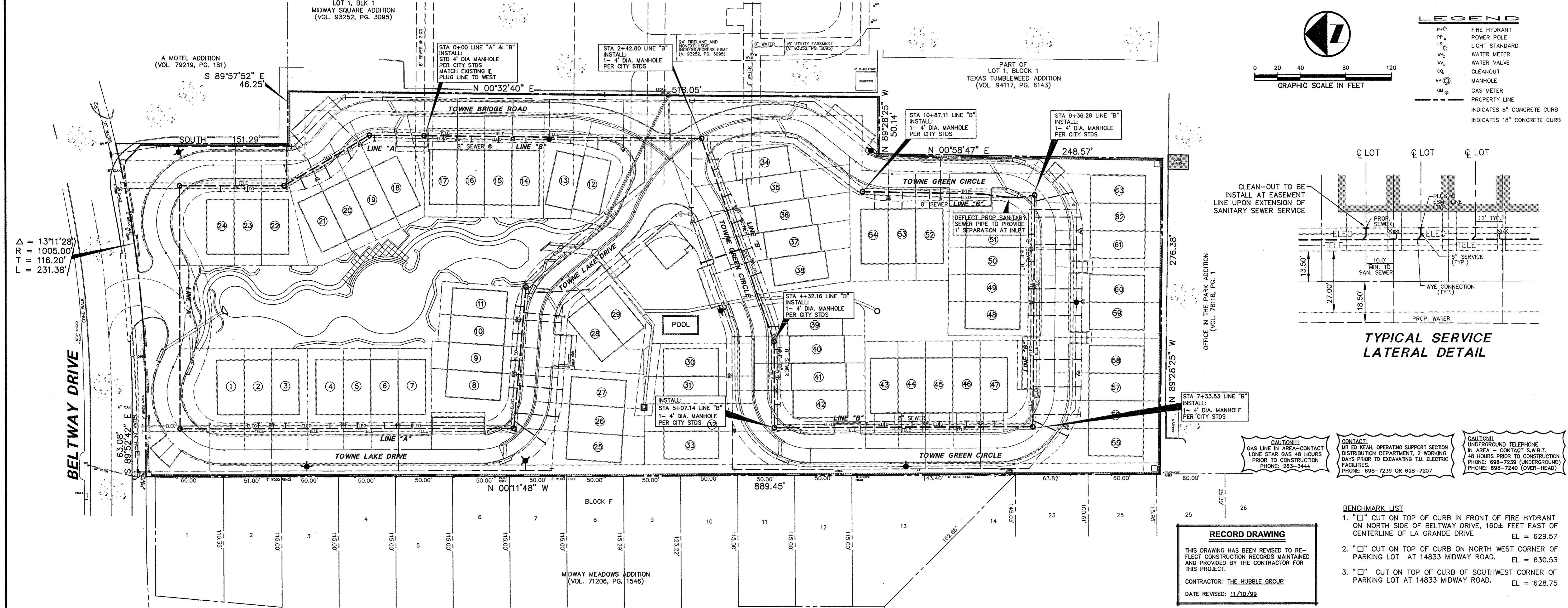
**BENCHMARK LIST**

1. "□" CUT ON TOP OF CURB IN FRONT OF FIRE HYDRANT  
ON NORTH SIDE OF BELTWAY DRIVE, 160± FEET EAST OF  
CENTERLINE OF LA GRANDE DRIVE EL = 629.57
2. "□" CUT ON TOP OF CURB ON NORTH WEST CORNER OF  
PARKING LOT AT 14833 MIDWAY ROAD. EL = 630.53
3. "□" CUT ON TOP OF CURB OF SOUTHWEST CORNER OF  
PARKING LOT AT 14833 MIDWAY ROAD. EL = 628.75

**RECORD DRAWING**

THIS DRAWING HAS BEEN REVISED TO RE-  
FLECT CONSTRUCTION RECORDS MAINTAINED  
AND PROVIDED BY THE CONTRACTOR FOR  
THIS PROJECT.  
CONTRACTOR: THE HUBBLE GROUP  
DATE REVISED: 11/10/99

Δ = 13°11'28"  
R = 1005.00'  
T = 116.20'  
L = 231.38'



THIS DOCUMENT IS RELEASED FOR THE PURPOSE  
OF INTERIM REVIEW UNDER THE AUTHORITY OF JAMES  
A. KOCH, JR., P.E. 62218 ON 12/16/96. IT IS  
NOT TO BE USED FOR CONSTRUCTION, BIDDING OR  
PERMIT PURPOSES.

**PACHECO KOCH** 9401 LBJ Freeway, Suite 300  
Consulting Engineers, Inc. Dallas, Texas 75243  
Civil Engineering • Land Surveying (972) 235-3031

**SANITARY SEWER LINE "B"**  
**TOWNE LAKE ADDITION**  
**STA 0+00 TO STA 10+87.11**  
**TOWNES OF ADDISON**  
**TOWN OF ADDISON, TEXAS**

DESIGN	DRAWN	DATE	SCALE	NOTES	FILE	NO.
JAK	JSN	12/16/96	1"=40', 1"=5',V			C-4.3