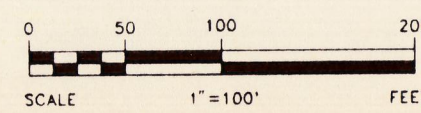
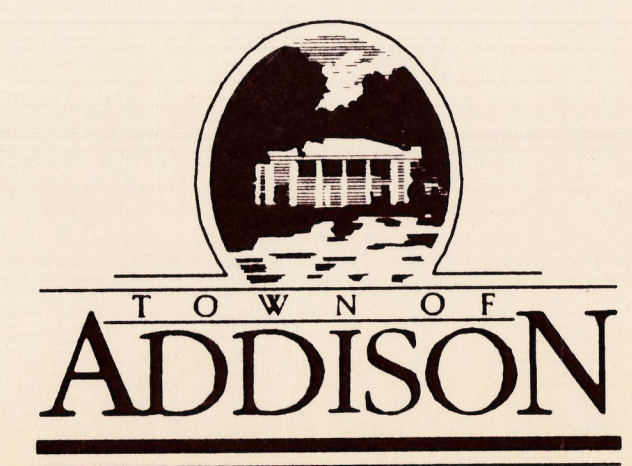


Prepared By:  
 Scott Consulting  
 Geobased Information Development, Design, & Support.

Copyright Scott Consulting 1995, all rights reserved.  
 6220 Bentwood Trail, Suite 1203  
 214.733.0015, Fax 214.733.1945  
 Dallas, Texas 75252



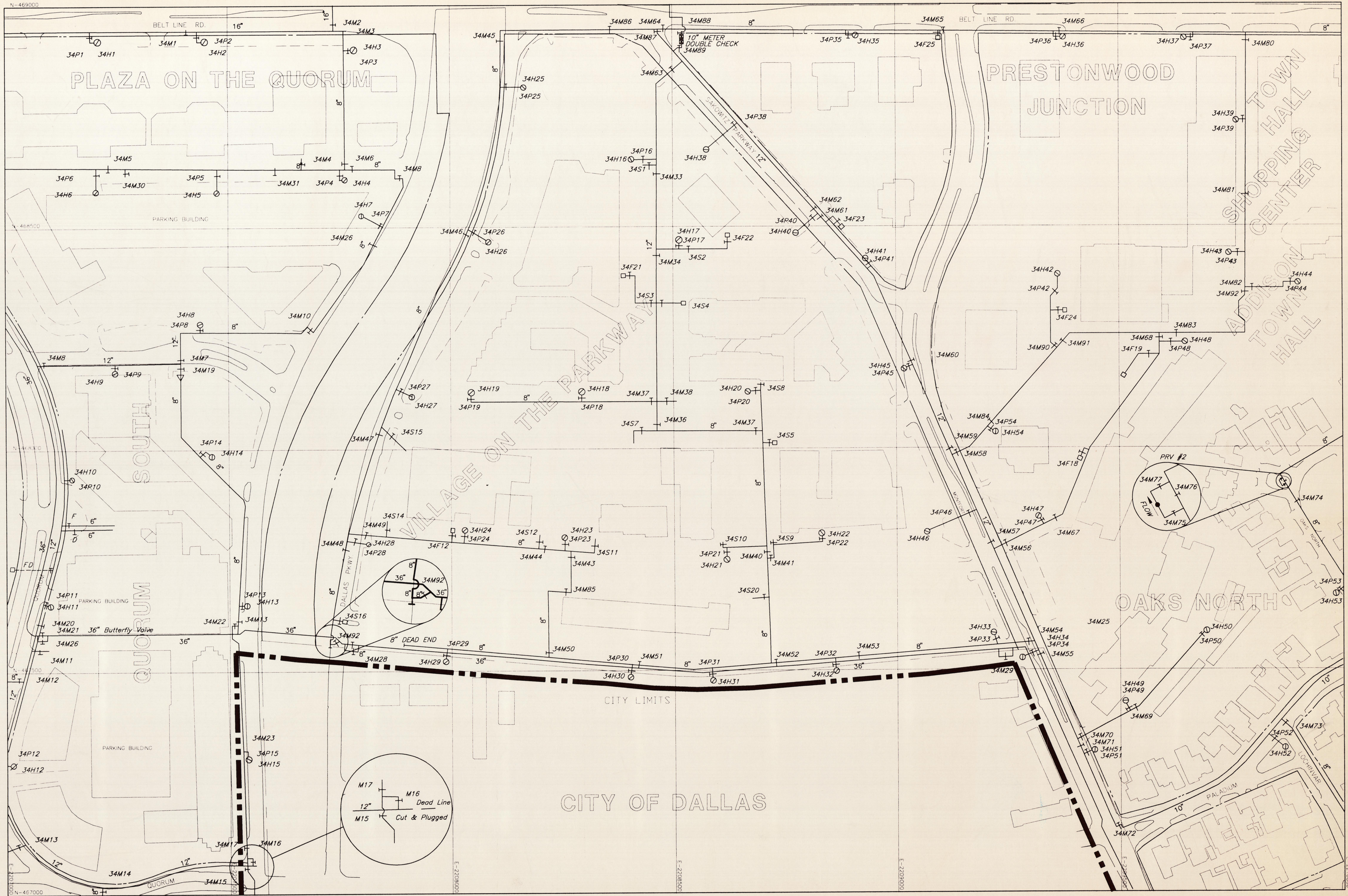
Compiled from aerial photographs taken February 25, 1986  
 Originals revised in August 1988.  
 Current conversion to CAD and revision date February 1995



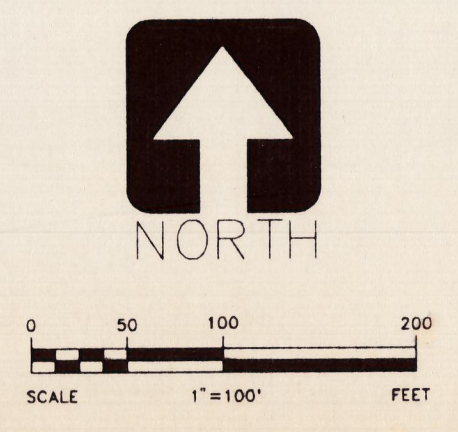
- 16" WATER LINE (SIZE INDICATED)
- 8" FIRE HYDRANT W/VALVE
- 6" FIRE HYDRANT W/O VALVE
- METER STATION
- VALVE
- REDUCER

2	7	17
3	8	18
4	9	19





Prepared By:  
 Scott Consulting  
 Geobased Information Development, Design, & Support.  
 Copyright Scott Consulting 1994, all rights reserved.  
 6220 Bentwood Trail, Suite 1203  
 214.733.0015, Fax 214.733.1945  
 Dallas, Texas 75252



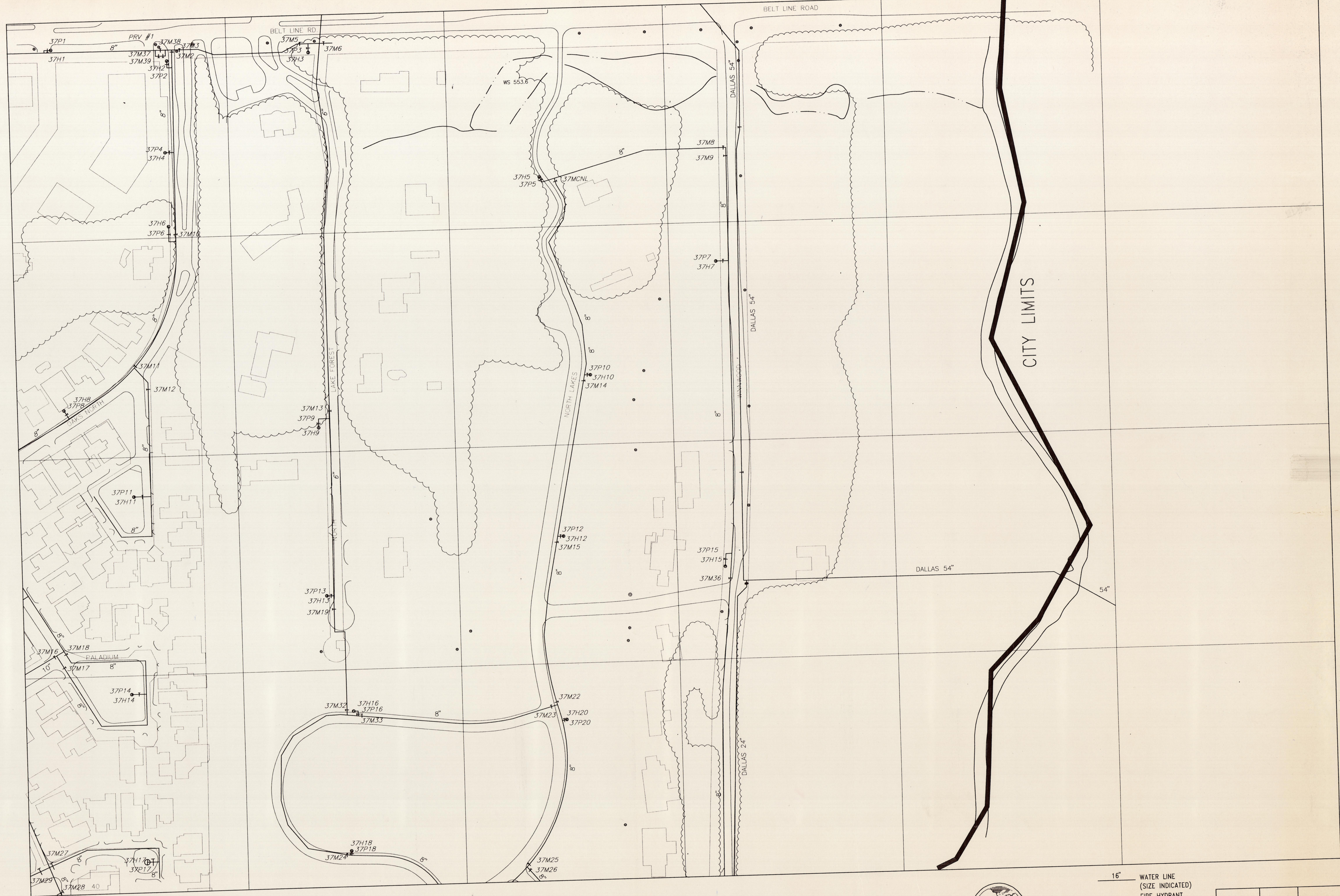
Compiled from aerial photographs taken February 25, 1986  
 Originals revised in August 1988.  
 Current conversion to CAD and revision date February 1995



- 16" WATER LINE (SIZE INDICATED)
- FIRE HYDRANT W/ VALVE
- FIRE HYDRANT W/O VALVE
- METER STATION
- VALVE
- ➔ REDUCER

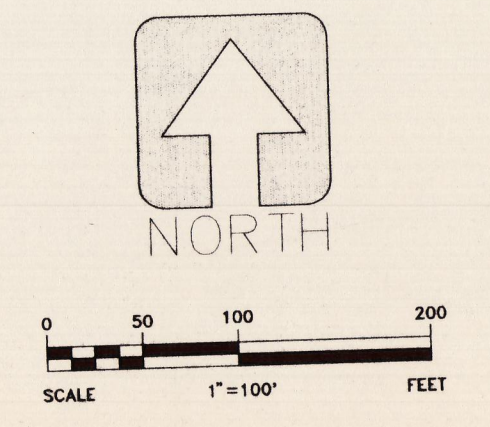
25	33	
26	34	37
27	35	38



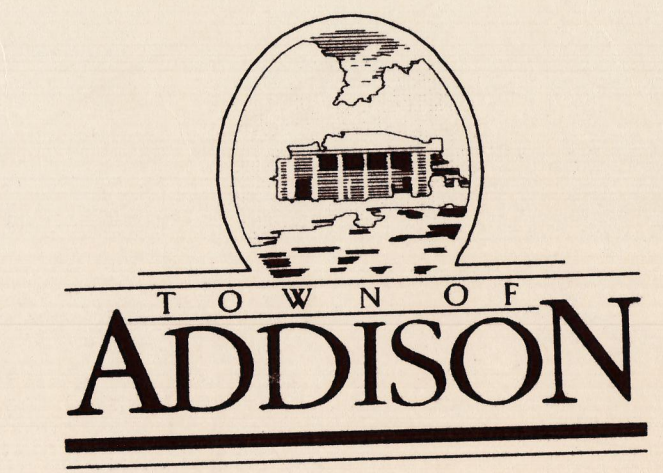


Prepared By:  
 Scott Consulting  
 Geobased Information Development, Design, & Support.

Copyright Scott Consulting 1995, all rights reserved.  
 6220 Bentwood Trail, Suite 1203  
 214.733.0015, Fax 214.733.1945  
 Dallas, Texas 75252



Compiled from aerial photographs taken February 25, 1986  
 Originals revised in August 1988.  
 Current conversion to CAD and revision date June 1995



- 16" WATER LINE (SIZE INDICATED)
- FIRE HYDRANT W/VALVE
- FIRE HYDRANT W/O VALVE
- METER STATION
- VALVE
- REDUCER

33		
34	37	
35	38	