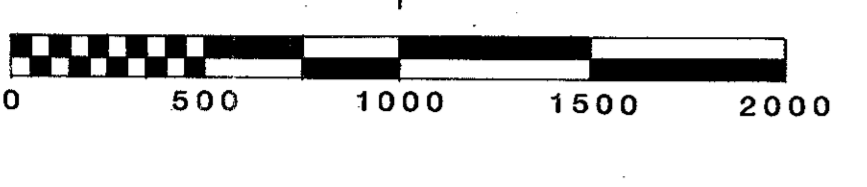
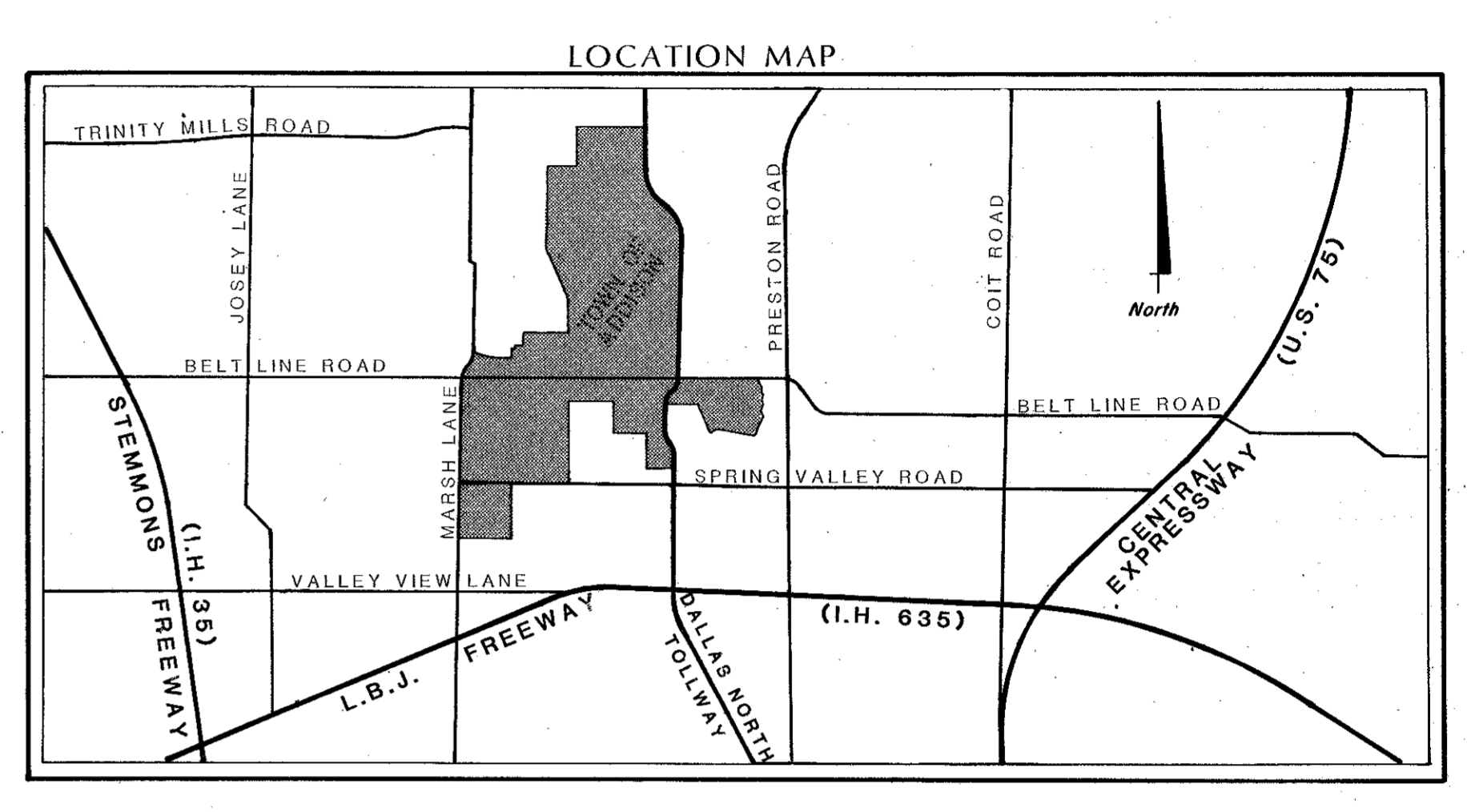
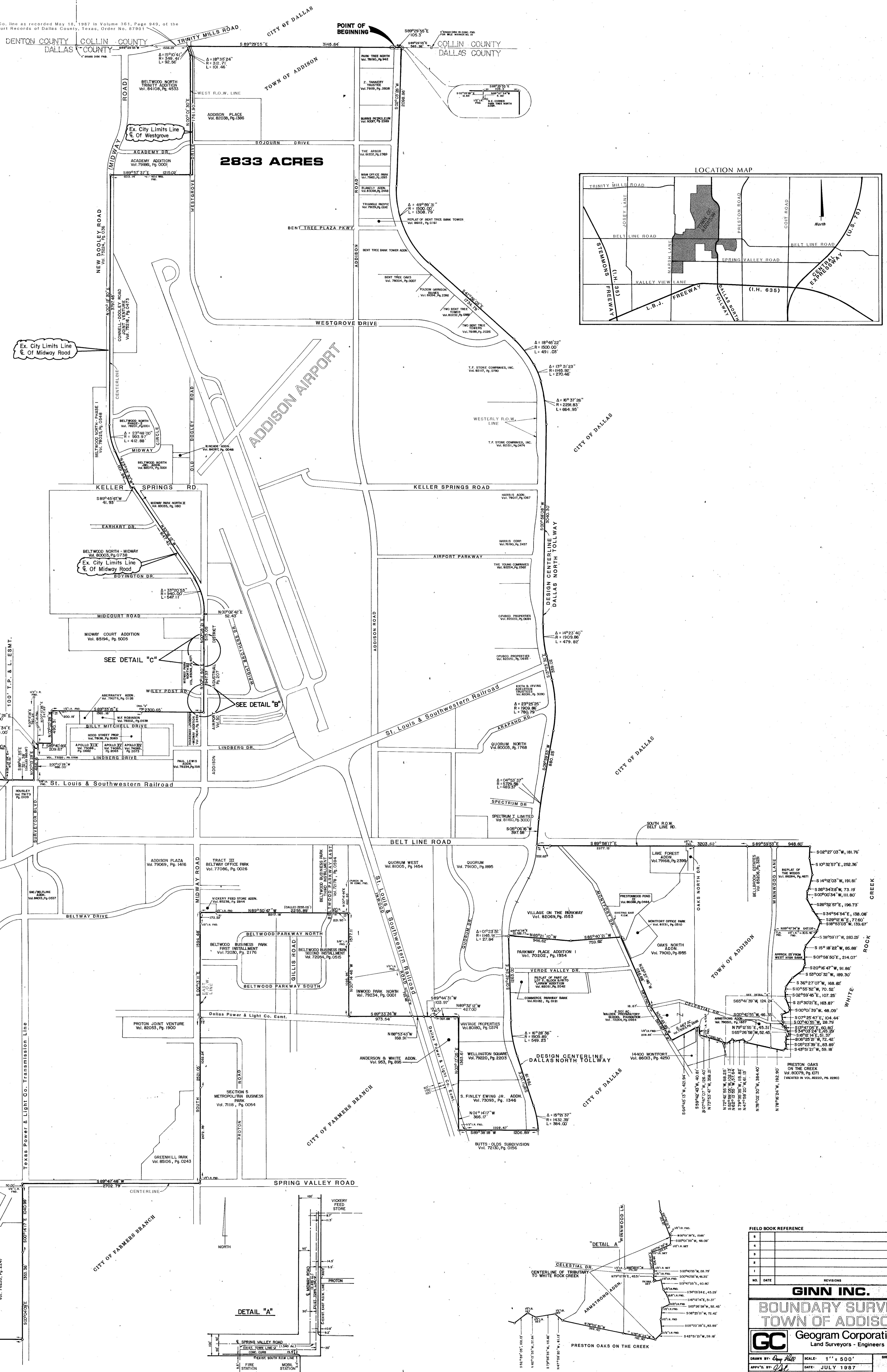


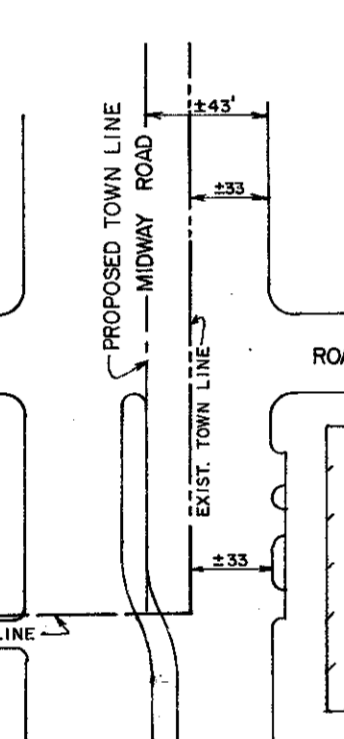
1-28-87
dun/robert/4/17/17/00000/11
B13-4



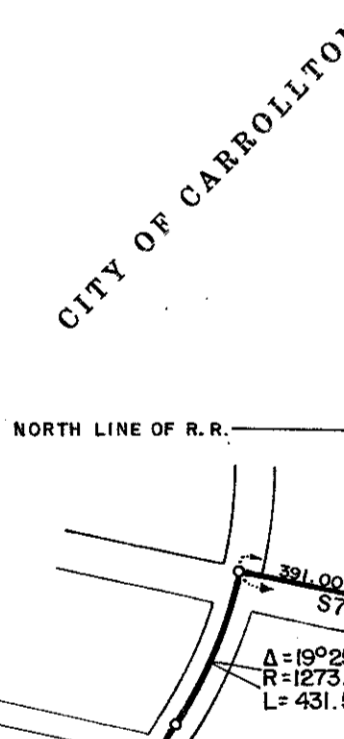
Dallas Co./Collin Co. line as recorded May 18, 1987 in Volume 363, Page 949, of the Commissioners Court Records of Dallas County, Texas, Order No. 87997



DETAIL "C"



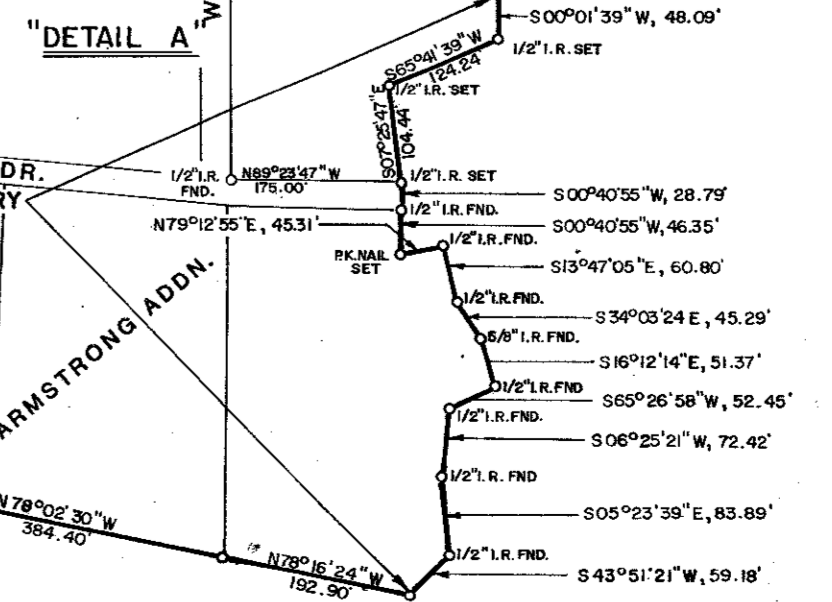
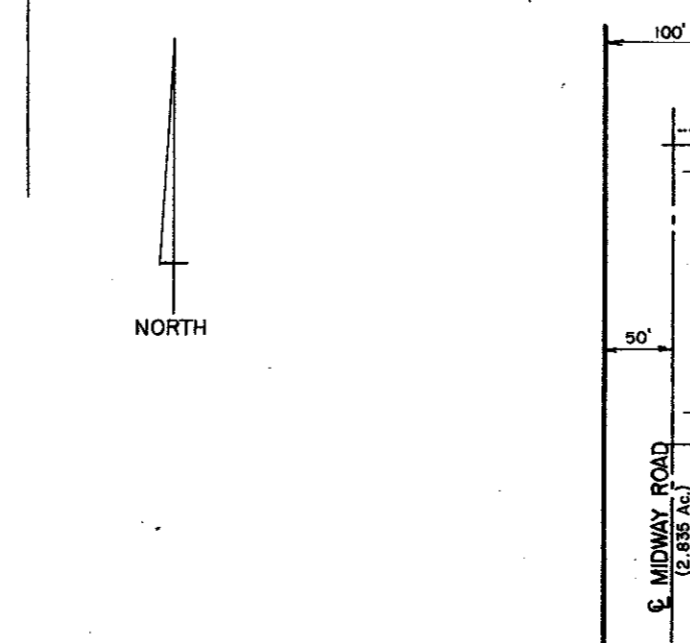
DETAIL "B"



SEE DETAIL "C"

SEE DETAIL "B"

DETAIL "A"



| FIELD BOOK REFERENCE | | |
|----------------------|------|-----------|
| No. | DATE | REVISIONS |
| | | |
| | | |
| | | |
| | | |
| | | |
| | | |

GINN INC.
BOUNDARY SURVEY
TOWN OF ADDISON

GC Geogram Corporation
Land Surveyors - Engineers

DRAWN BY: [Signature] SCALE: 1" = 500'
APP'D BY: [Signature] DATE: JULY 1987
JOB NO.: 3343-55-01-100