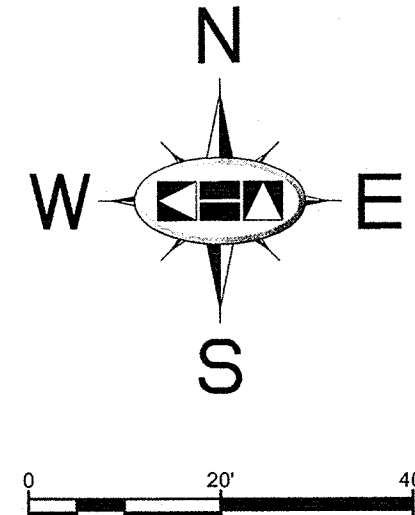
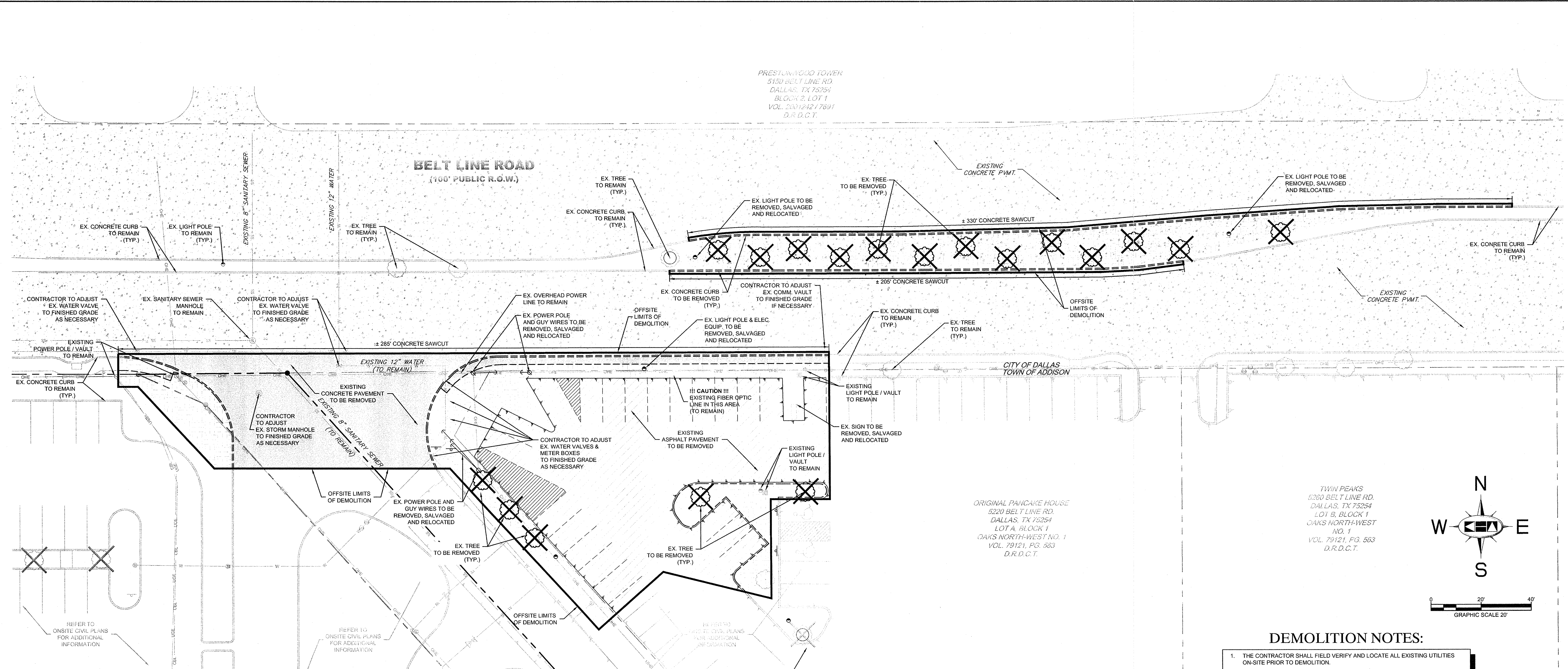


PLOTTED BY LUCIO RAMIRO 6/4/2013 3:47 PM
 LAST SAVED 6/20/2013 12:11 PM
 This document, together with the concepts and designs presented herein, is an instrument of service, is intended only for the specific purpose and client for which it was prepared. Reuse of and improper reliance on this document without written authorization and adoption by Kimley-Horn and Associates, Inc. shall be without liability to Kimley-Horn and Associates, Inc.



CITY OF DALLAS GENERAL CONSTRUCTION NOTES

- ALL MATERIALS AND WORKMANSHIP (WITHIN BELT LINE ROAD RIGHT-OF-WAY) SHALL CONFORM WITH THE STANDARD SPECIFICATIONS FOR PUBLIC WORKS CONSTRUCTION FOR NORTH CENTRAL TEXAS, LATEST EDITION, AND THE CITY OF DALLAS DEPARTMENT OF PUBLIC WORKS AND TRANSPORTATION ADDENDUM.
- DURING THE CONSTRUCTION OF THESE IMPROVEMENTS (WITHIN BELT LINE ROAD RIGHT-OF-WAY), ANY INTERPRETATION OF THE STANDARD SPECIFICATIONS FOR PUBLIC WORKS CONSTRUCTION FOR NORTH CENTRAL TEXAS, AND ANY MATTER WHICH REQUIRES THE APPROVAL OF THE OWNER, MUST BE APPROVED BY THE DIRECTOR OF PUBLIC WORKS AND TRANSPORTATION OR HIS DESIGNEE BEFORE ANY CONSTRUCTION INVOLVING THAT DECISION COMMENCES. ASSUMPTIONS ABOUT WHAT THESE DECISIONS MIGHT BE WHICH ARE MADE DURING THE BIDDING PHASE WILL HAVE NO BEARING ON THE DECISION.
- FOR ADJUSTMENTS OF DALLAS WATER UTILITIES APPURTENANCES OR TO VERIFY LOCATIONS OF EXISTING WATER AND WASTEWATER MAINS IN AREA, CALL (214) 670-1770 AT LEAST (3) THREE WORKING DAYS PRIOR TO CONSTRUCTION.
- STREETS, ALLEYS, SIDEWALKS, DRIVEWAYS AND STORM DRAINAGE FACILITIES WITHIN BELT LINE ROAD RIGHT-OF-WAY, SHALL BE CONSTRUCTED IN CONFORMANCE WITH THE CITY OF DALLAS STANDARD CONSTRUCTION DETAILS, FILE 251D-1, LATEST EDITION.
- ALL CONCRETE FOR PAVEMENT WITHIN BELT LINE ROAD RIGHT-OF-WAY SHALL BE 4,000 PSI FOR MACHINE FINISH AND 4,500 PSI IF IT IS NECESSARY FOR HAND FINISH.

NOTE

KIMLEY-HORN AND ASSOCIATES, INC. IS NOT RESPONSIBLE FOR THE MEANS AND METHODS EMPLOYED BY THE CONTRACTOR TO IMPLEMENT THIS DEMOLITION PLAN. THIS DEMOLITION PLAN SIMPLY INDICATES THE KNOWN OBJECTS ON THE SUBJECT TRACTS THAT ARE TO BE DEMOLISHED AND REMOVED FROM THE SITE. KIMLEY-HORN AND ASSOCIATES, INC. DOES NOT WARRANT OR REPRESENT THAT THE PLAN, WHICH WAS PREPARED BASED ON SURVEY AND UTILITY INFORMATION PROVIDED BY OTHERS, SHOWS ALL IMPROVEMENTS AND UTILITIES, AND THAT THE IMPROVEMENTS AND UTILITIES ARE SHOWN ACCURATELY. THE CONTRACTOR IS RESPONSIBLE FOR PERFORMING HIS OWN SITE RECONNAISSANCE TO SCOPE HIS WORK AND TO CONFIRM WITH THE OWNERS OF EXISTING IMPROVEMENTS AND UTILITIES THE ABILITY AND PROCESS FOR THE REMOVAL OF PROPOSED DEMOLITION. THE GOAL OF THE DEMOLITION IS TO LEAVE THE SITE IN A STATE SUITABLE FOR THE CONSTRUCTION OF THE PROPOSED IMPROVEMENTS, REMOVAL, RELOCATION, OR PRESERVATION OF EXISTING IMPROVEMENTS, UTILITIES, ETC. TO ACCOMPLISH THIS GOAL ARE THE RESPONSIBILITY OF THE CONTRACTOR.

CONTRACTOR SHALL COMPLY WITH ALL LOCAL, STATE, AND FEDERAL REGULATIONS REGARDING THE DEMOLITION OF OBJECTS ON THE SITE AND THE DISPOSAL OF THE DEMOLISHED MATERIALS OFF-SITE. IT IS THE CONTRACTOR'S SOLE RESPONSIBILITY TO REVIEW THE SITE, DETERMINE THE APPLICABLE REGULATIONS, RECEIVE THE REQUIRED PERMITS AND AUTHORIZATIONS, AND COMPLY.

BENCHMARKS

- BM 1 2" BRASS DISK STAMPED "TXDOT COA-5 GPS" 190± SOUTH FROM THE INTERSECTION OF EDWIN LEWIS DRIVE AND QUORUM DRIVE; 2± FROM WEST EDGE OF SIDEWALK, 50.5± FROM THE WEST SIDE OF MEDIAN IN QUORUM DRIVE & 78± FROM FIRE HYDRANT. ELEV=630.10
- BM 2 2" BRASS DISK STAMPED "TXDOT COA-10 GPS" AT THE NORTHWEST CORNER OF HAVENSHIRE PLACE AND BELLBROOK DRIVE; 21.80± FROM SANITARY SEWER MANHOLE, 11.10± FROM STREET SIGN & 2.45± TO PC IN SIDEWALK. ELEV=593.89
- BM 3 CITY OF DALLAS WATER DEPT. BENCHMARK ON CONCRETE BASE OF 8" BRICK WALL AT THE NORTHEAST CORNER OF CELESTIAL ROAD AND MONTFORT DRIVE. ELEV=626.81
- BM 4 STANDARD CITY OF DALLAS WATER DEPT. BENCHMARK ON CONCRETE CURB ON STORM SEWER INLET AT THE NORTHEAST CORNER OF HUGHES LANE AND PRESTON ROAD; 30± NORTH OF HUGHES LANE. ELEV=573.18
- BM 5 1" SET ON NORTHWEST CORNER OF CONCRETE PAD FOR SW6 TELEPHONE BOX; 15± EAST OF NORTHBOND DALLAS NORTH TOLLWAY ACCESS ROAD AND 1,450± SOUTH OF BELT LINE ROAD. ELEV=634.30
- BM 6 1" SET ON SOUTHEAST CORNER OF CURB INLET; 15± WEST OF MONTFORT DRIVE AND 750± SOUTH OF SAKOWITZ DRIVE. ELEV=603.67
- BM 7 1" SET ON SOUTHWEST CORNER OF CURB INLET ON SOUTH SIDE OF BELT LINE ROAD AND 200± EAST OF DALLAS NORTH TOLLWAY. ELEV=627.26
- BM 8 1" SET ON NORTHEAST CORNER OF "Y" INLET 20± SOUTH OF SAKOWITZ DRIVE AND 315± NORTHWEST OF MONTFORT DRIVE. ELEV=616.09
- BM 9 1" SET ON SOUTHEAST CORNER OF CURB INLET ON EAST SIDE OF DALLAS NORTH TOLLWAY ACCESS ROAD AND 300± SOUTH OF BELT LINE ROAD. ELEV=627.34

DEMOLITION NOTES:

- THE CONTRACTOR SHALL FIELD VERIFY AND LOCATE ALL EXISTING UTILITIES ON-SITE PRIOR TO DEMOLITION.
- IT WILL BE THE RESPONSIBILITY OF THE CONTRACTOR TO OBTAIN ANY PERMITS AND PAY ANY FEES REQUIRED FOR DEMOLITION AND HAUL-OFF FROM THE APPROPRIATE AUTHORITIES.
- THE CONTRACTOR SHALL PREPARE ALL DOCUMENTS AND ACQUIRE APPROPRIATE PERMITS AS REQUIRED PRIOR TO THE COMMENCEMENT OF DEMOLITION.
- THE DEMOLITION PLAN IS INTENDED TO DEPICT GENERAL DEMOLITION AND UTILITY WORK. IT IS NOT INTENDED TO IDENTIFY EACH ELEMENT OF DEMOLITION OR RELOCATION. THE CONTRACTOR SHALL COORDINATE WITH THE OWNER AND APPROPRIATE UTILITY COMPANY PRIOR TO WORK.
- CONTRACTOR TO COMPLETELY DEMOLISH AND DISPOSE OF OFF-SITE IN A LAWFUL MANNER EXISTING APPURTENANCES LOCATED ON AND AROUND THE PROPERTY INCLUDING BUT NOT LIMITED TO BOLLARDS, GAS METERS, AIR CONDITIONING UNITS, SIGNS, CURBS, SIDEWALKS, ELECTRIC METERS, FENCING, ETC.
- REMOVE AND DISPOSE OF ANY SIDEWALK, FENCES, STAIRS, WALLS, FOUNDATIONS, CONDUITS, LIGHT POLE BASES, DEBRIS AND RUBBISH REQUIRING REMOVAL FROM THE WORK AREA IN AN APPROVED LANDFILL.
- REMOVE AND/OR PLUG EXISTING UTILITIES SUCH AS SANITARY SEWER, WATER, GAS, ELECTRIC, AND TELEPHONE AS SHOWN OR AS NEEDED. THE CONTRACTOR IS RESPONSIBLE FOR CONTACTING EACH UTILITY COMPANY TO COORDINATE REMOVAL OF ALL UTILITIES AND FOR DETERMINING HORIZONTAL AND VERTICAL LOCATIONS OF UTILITIES PRIOR TO COMMENCING WORK.
- THE CONTRACTOR SHALL CUT AND PLUG OR ARRANGE FOR THE APPROPRIATE UTILITY COMPANY TO CUT AND PLUG ALL SERVICE PIPING AT THE STREET LINE OR MAIN, AS REQUIRED, OR AS OTHERWISE NOTED. ALL SERVICES MAY NOT BE SHOWN ON THIS PLAN. THE CONTRACTOR SHALL INVESTIGATE THE SITE PRIOR TO BIDDING TO DETERMINE THE EXTENT OF SERVICE PIPING TO BE REMOVED, CUT OR PLUGGED.
- THE CONTRACTOR SHALL ARRANGE FOR THE RESETTING OF CURB BOXES AND/OR VALVE BOXES WITH THE APPROPRIATE UTILITY COMPANY.
- INSTALL ALL EROSION AND SEDIMENT CONTROL DEVICES PRIOR TO BEGINNING DEMOLITION WORK.
- THE CONTRACTOR IS RESPONSIBLE FOR THE PROTECTION OF ALL UTILITIES TO REMAIN IN PLACE.
- THE CONTRACTOR SHALL TAKE ALL PRECAUTIONS TO AVOID UNNECESSARY DAMAGE TO EXISTING ROAD SURFACE.
- FINISH SURFACE TO BE REMOVED OR DEMOLISHED SHALL BE CUT ALONG LINES OF JOINTS WHICH WILL PERMIT A NEAT SURFACE WHEN RESTORED.
- ALL EXISTING ITEMS TO REMAIN WHICH ARE DAMAGED DURING CONSTRUCTION SHALL BE RESTORED TO ITS ORIGINAL CONDITION AT THE SOLE EXPENSE OF THE CONTRACTOR.
- DO NOT INTERRUPT EXISTING UTILITIES SERVICING FACILITIES OCCUPIED AND USED BY THE OWNER OR OTHERS DURING OCCUPIED HOURS EXCEPT WHEN SUCH INTERRUPTIONS HAVE BEEN AUTHORIZED IN WRITING BY THE OWNER AND THE LOCAL MUNICIPALITIES. INTERRUPTIONS SHALL ONLY OCCUR AFTER ACCEPTABLE TEMPORARY SERVICE HAS BEEN PROVIDED.
- SHOULD ANY UNCHARTED OR INCORRECTLY CHARTED EXISTING PIPING OR OTHER UTILITY BE UNCOVERED DURING EXCAVATION, CONTACT THE ENGINEER IMMEDIATELY FOR DIRECTIONS BEFORE PROCEEDING FURTHER WITH WORK IN THE AREA.

LEGEND

	PROPERTY LINE		EXISTING POWER POLE
	EXISTING OVERHEAD POWER LINE		EXISTING LIGHT POLE
	EXISTING CABLE LINE		EXISTING FIRE HYDRANT
	EXISTING UNDERGROUND ELECTRIC		EXISTING STORM MANHOLE
	EXISTING WATER LINE		EXISTING SANITARY SEWER MANHOLE
	EXISTING SANITARY SEWER LINE		EXISTING SIGN
	EXISTING FIBER OPTIC EQUIP. / LINE		EXISTING LANDSCAPE AREA TO BE REMOVED
	TREE PROTECTION		EXISTING CONCRETE PAVING TO BE REMOVED
	EXISTING TREE TO BE REMOVED		EXISTING ASPHALT PAVING TO BE REMOVED
	EXISTING TREE TO REMAIN		

STOP!
CALL BEFORE YOU DIG
DIG TESS
1-800-DIG-TESS
 (at least 72 hours prior to digging)

!!WARNING!!
 EXISTING UTILITIES IN THE AREA. CONTRACTOR SHALL FIELD VERIFY THE LOCATION OF ALL EXISTING UTILITIES WITH THE PROVIDER PRIOR TO START OF CONSTRUCTION AND SHALL IMMEDIATELY NOTIFY THE ENGINEER OF ANY CONFLICTS DISCOVERED. CONTRACTOR IS RESPONSIBLE FOR COORDINATING UTILITY RELOCATION WHERE NECESSARY AND PROTECTING EXISTING UTILITIES (SHOWN OR NOT SHOWN). IF ANY EXISTING UTILITIES ARE DAMAGED, THE CONTRACTOR SHALL REPLACE THEM AT THEIR OWN EXPENSE.

RECORD DRAWINGS
(October 2013)
 INFORMATION PROVIDED BY:
Bob Moore Construction

 Kimley-Horn and Associates, Inc. State of Texas Registration No. F-928 5750 GENESIS COURT, SUITE 200, FRISCO, TX 75034 PHONE: 972-335-3580 FAX: 972-335-3779 WWW.KIMLEY-HORN.COM	 BOB MOORE LICENSED PROFESSIONAL ENGINEER
CITY OF DALLAS 311T - 8155 BELT LINE ROAD IMPROVEMENTS VILLAGE ON THE PARKWAY ADDISON, TEXAS	DEMOLITION PLAN
KHA PROJECT: 063319038 DATE: 06/14/2013 SCALE: AS SHOWN DESIGNED BY: TBB DRAWN BY: AAE CHECKED BY: TBB	SHEET NUMBER C-03
	REVISIONS No. DATE BY