

CONSTRUCTION PLANS

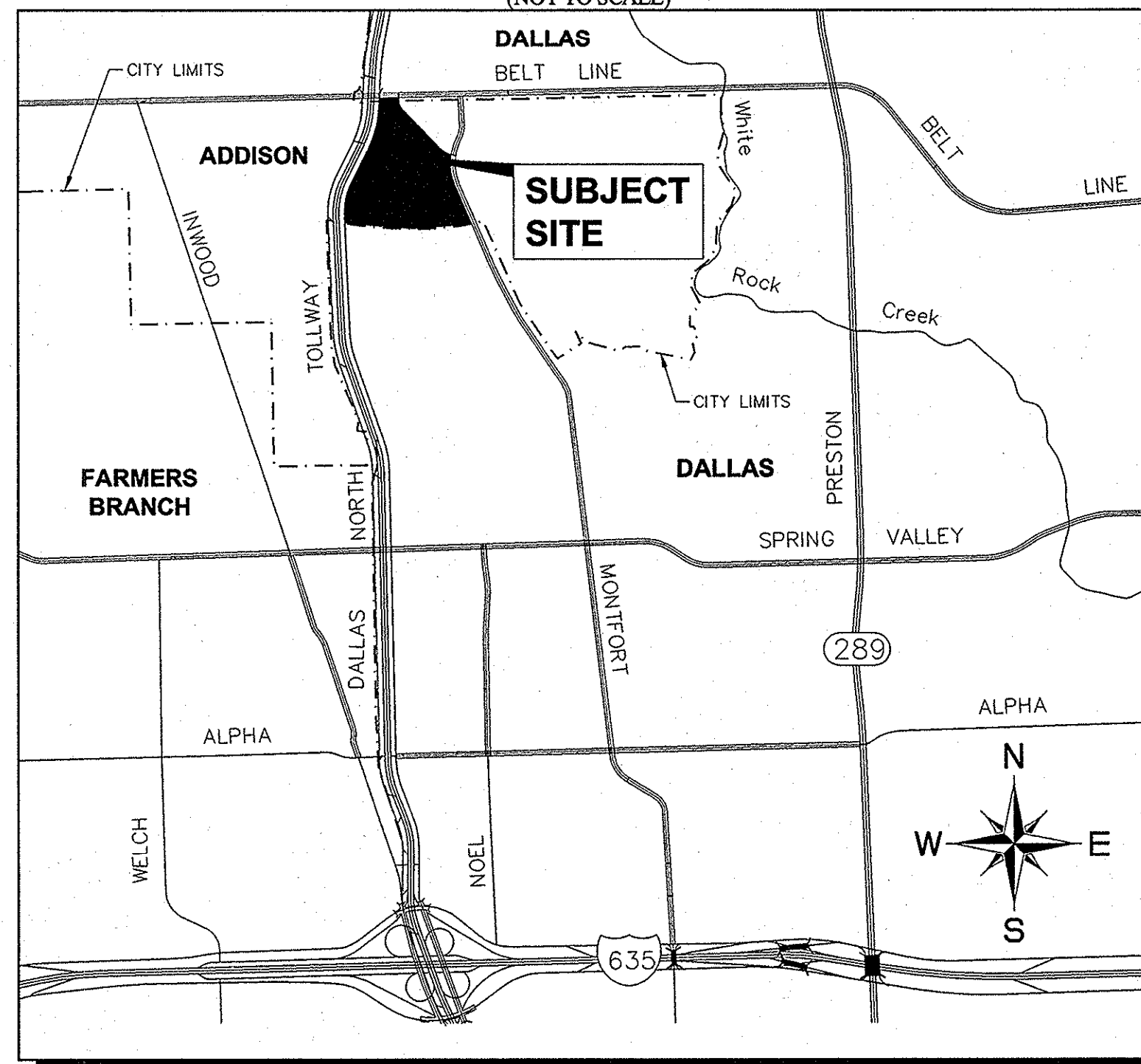
FOR

VILLAGE ON THE PARKWAY

TOWN OF ADDISON, DALLAS COUNTY, TEXAS

CONSTRUCTION PLANS VILLAGE ON THE PARKWAY
TOWN OF ADDISON PROJECT NUMBER: 2012-02

VICINITY MAP
(NOT TO SCALE)



INDEX OF SHEETS

SHEET #	SHEET TITLE	DATE	REVISION
C-01	COVER SHEET	11/19/2012	△△
1 of 2	AMENDED REPLAT	05/20/12	
2 of 2	AMENDED REPLAT	05/20/12	
C-02	GENERAL NOTES	9/27/12	
C-03	EROSION CONTROL PLAN	9/27/12	
C-04	EROSION CONTROL DETAILS	9/27/12	
C-05	DEMOLITION PLAN	9/27/12	
C-06	GRADING PLAN	10/05/2012	△
C-07	DETAILED GRADING PLAN	9/27/12	
C-08	PAVING & DIMENSION CONTROL PLAN	9/27/12	
C-09	EXISTING CONDITIONS DRAINAGE AREA MAP	9/27/12	
C-10	DRAINAGE AREA MAP	9/27/12	
C-11	STORM SEWER PLAN	11/19/12	△
C-12	STORM SEWER PROFILES	11/19/12	△
C-13	UTILITY PLAN	9/27/12	
C-14	SANITARY SEWER PROFILE	9/27/12	
C-15	DALLAS PARKWAY TRAFFIC CONTROL PLAN	9/27/12	
C-16	ON-SITE TRAFFIC CONTROL PLAN	9/27/12	
C-17	TOWN OF ADDISON STORM DRAINAGE DETAILS	08/20/10	
C-18	TOWN OF ADDISON PAVING DETAILS	08/20/10	
C-19	TOWN OF ADDISON WASTEWATER DETAILS	08/20/10	
C-20	TOWN OF ADDISON WATER DETAILS	08/20/10	
C-21	PHASING PLAN	9/27/12	
LL.00	EXISTING TREE PLAN	09/21/2012	
LL.01	LANDSCAPE PLAN	09/21/2012	
LL.02	HARDSCAPE PLAN	05/25/2012	
LL.03	LANDSCAPE SPECIFICATIONS	05/25/2012	
L2.01	IRRIGATION PLAN	09/21/2012	
L2.02	IRRIGATION SPECIFICATIONS	05/25/2012	

BENCHMARKS

BM 1	2" BRASS DISK STAMPED "TXDOT COA-5 GPS" 180" SOUTH FROM THE INTERSECTION OF EDWIN LEWIS DRIVE AND QUORUM DRIVE; 2" FROM WEST EDGE OF SIDEWALK, 50.5" FROM THE WEST SIDE OF MEDIAN IN QUORUM DRIVE & 78" FROM FIRE HYDRANT.
ELEV=630.10	
BM 2	2" BRASS DISK STAMPED "TXDOT COA-10 GPS" AT THE NORTHWEST CORNER OF HAVENSHIRE PLACE AND BELLBROOK DRIVE; 21.80" FROM SANITARY SEWER MANHOLE, 11.10" FROM STREET SIGN & 2.45" TO PC IN SIDEWALK.
ELEV=693.09	
BM 3	CITY OF DALLAS WATER DEPT. BENCHMARK: □ ON CONCRETE BASE OF 6" BRICK WALL AT THE NORTHEAST CORNER OF CELESTIAL ROAD AND MONTFORT DRIVE.
ELEV=626.81	
BM 4	STANDARD CITY OF DALLAS WATER DEPT. BENCHMARK ON CONCRETE CURB ON STORM SEWER INLET AT THE NORTHEAST CORNER OF HUGHES LANE AND PRESTON ROAD; 30" NORTH OF HUGHES LANE.
ELEV=573.16	
BM 5	SET ON NORTHWEST CORNER OF CONCRETE PAD FOR SWB TELEPHONE BOX, 15" EAST OF NORTHBOUND DALLAS NORTH TOLLWAY ACCESS ROAD AND 1,450" SOUTH OF BELT LINE ROAD.
ELEV=634.30	
BM 6	SET ON SOUTHEAST CORNER OF CURB INLET; 15" WEST OF MONTFORT DRIVE AND 750" SOUTH OF SAKOWITZ DRIVE.
ELEV=603.67	
BM 7	SET ON SOUTHWEST CORNER OF CURB INLET ON SOUTH SIDE OF BELT LINE ROAD AND 200" EAST OF DALLAS NORTH TOLLWAY.
ELEV=627.26	
BM 8	SET ON NORTHEAST CORNER OF "Y" INLET 20" SOUTH OF SAKOWITZ DRIVE AND 315" NORTHWEST OF MONTFORT DRIVE.
ELEV=616.09	
BM 9	SET ON SOUTHEAST CORNER OF CURB INLET ON EAST SIDE OF DALLAS NORTH TOLLWAY ACCESS ROAD AND 300" SOUTH OF BELT LINE ROAD.
ELEV=627.34	

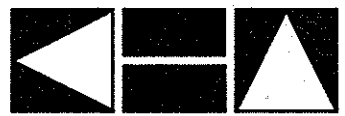
OWNER / DEVELOPER

VOP, LP
2000 MCKINNEY AVENUE
SUITE 1000
DALLAS, TX 75201
CONTACT: JARROD YATES

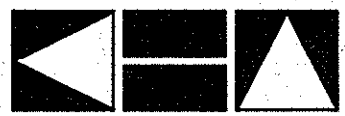
ARCHITECT

GOOD FULTON & FARRELL ARCHITECTS
2808 FAIRMOUNT STREET
SUITE 300
DALLAS, TX 75201
PH. (214) 303-1500
CONTACT: MATTHEW BALSAMAN

ENGINEER

 **Kimley-Horn and Associates, Inc.**
5750 GENESIS COURT
FRISCO, TEXAS 75034
PH. (972) 335-3580
CONTACT: TREY BRASWELL, P.E.
FIRM NO. F-928

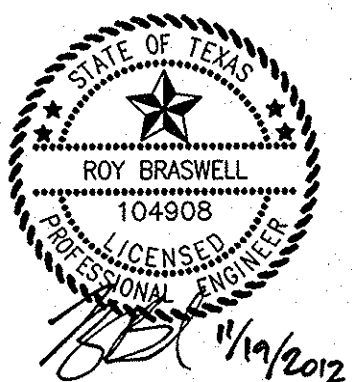
SURVEYOR

 **Kimley-Horn and Associates, Inc.**
12750 MERIT DRIVE
DALLAS, TEXAS 75251
SUITE 1000
PH. (972) 770-1300
CONTACT: DANA BROWN, R.P.L.S.
FIRM NO. F-928

TOWN OF ADDISON PROJECT #: 2012-02
SEPTEMBER 27, 2012

STOP!
CALL BEFORE YOU DIG
DIG TESS
1-800-DIG-TESS
(at least 72 hours prior to digging)

RECORD DRAWINGS
(October 2013)
Information Provided By:
BOB MOORE
CONSTRUCTION



PREPARED BY: BRASWELL, TREY 11/19/2012 10:07 AM
 PLOTTED BY: BRASWELL, TREY 11/19/2012 10:07 AM
 LAST SAVED: 10/20/12 9:48 AM
 This document, together with the concepts and designs presented herein, is an instrument of service, as an instrument of service, is intended only for the specific purpose and client for which it was prepared. Reuse of and improper reliance on this document without written authorization and adaptation by Kimley-Horn and Associates, Inc. shall be without liability to Kimley-Horn and Associates, Inc.