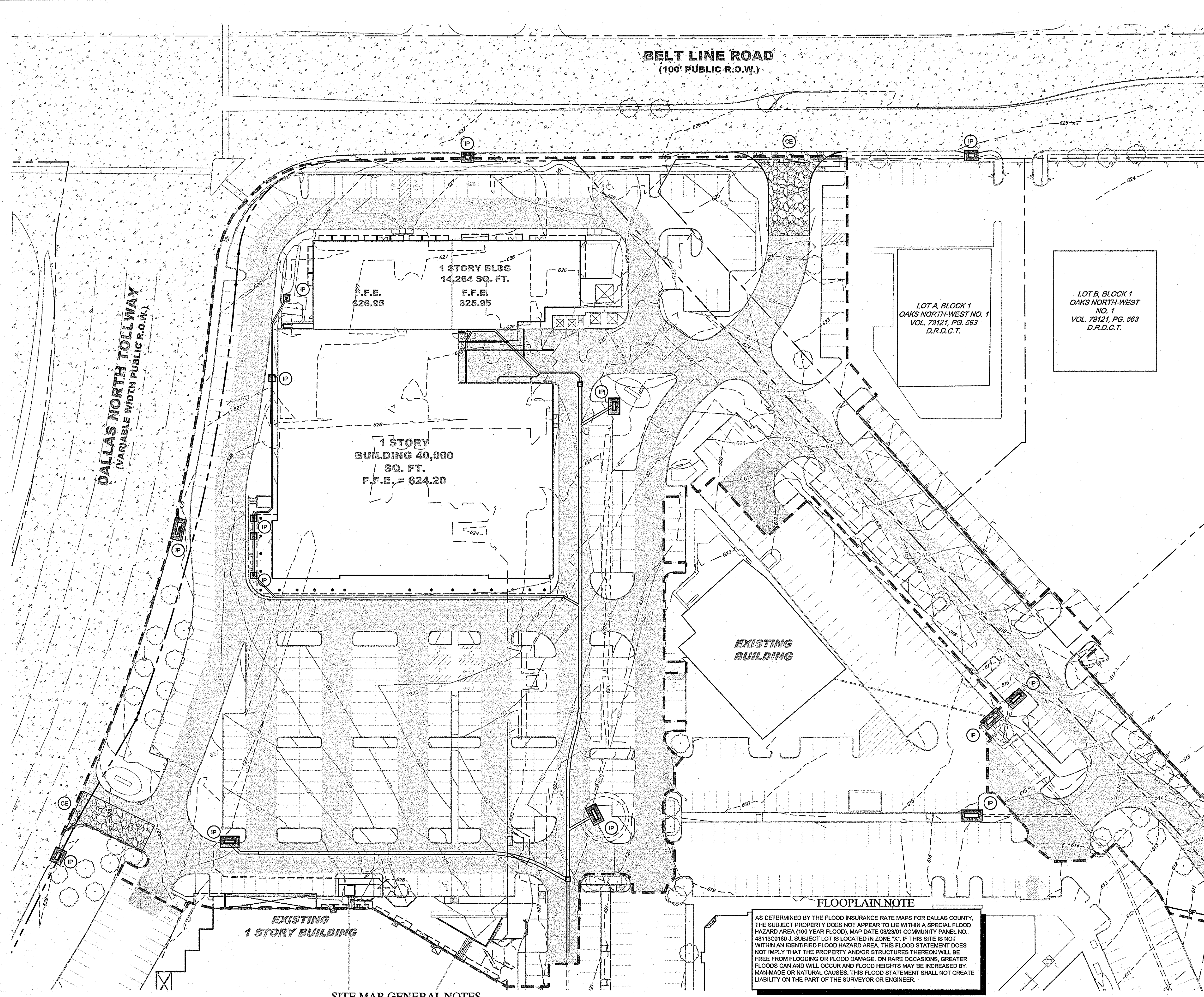
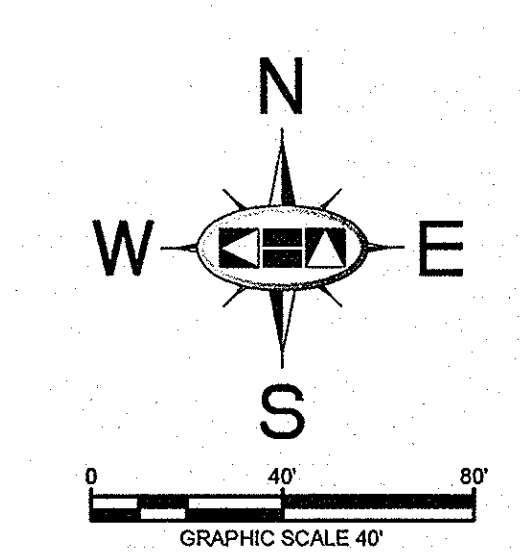


NOTED BY: MAURICIO MARRA, ARCHITECT/ENGINEER, KIMLEY-HORN AND ASSOCIATES, INC. DATE: 09/27/2012
 DRAWN BY: KIMLEY-HORN AND ASSOCIATES, INC. DATE: 09/27/2012
 CHECKED BY: KIMLEY-HORN AND ASSOCIATES, INC. DATE: 09/27/2012
 THIS DOCUMENT, TOGETHER WITH THE CONCEPTS AND DESIGNS PRESENTED HEREIN, IS AN INSTRUMENT OF SERVICE, IS INTENDED ONLY FOR THE SPECIFIC PURPOSE AND CLIENT FOR WHICH IT WAS PREPARED. REUSE OF AND IMPROPER RELIANCE ON THIS DOCUMENT WITHOUT WRITTEN AUTHORIZATION AND ADAPTATION BY KIMLEY-HORN AND ASSOCIATES, INC. SHALL BE WITHOUT LIABILITY TO KIMLEY-HORN AND ASSOCIATES, INC.



BENCHMARKS

BM 1 2" BRASS DISK STAMPED "TXDOT COA-5 GPS" 1972 SOUTH FROM THE INTERSECTION OF EDWIN LEWIS DRIVE AND QUORUM DRIVE; 2 1/2' FROM WEST EDGE OF SIDEWALK; 50.5' FROM THE WEST SIDE OF MEDIAN IN QUORUM DRIVE & 79.2' FROM FIRE HYDRANT.
 ELEV=630.10
 BM 2 2" BRASS DISK STAMPED "TXDOT COA-10 GPS" AT THE NORTHWEST CORNER OF HAVENSHIRE PLACE AND BELLBROOK DRIVE; 21.80' FROM SANITARY SEWER MANHOLE, 11.10' FROM STREET SIGN & 2.45' TO PC IN SIDEWALK.
 ELEV=593.89
 BM 3 CITY OF DALLAS WATER DEPT. BENCHMARK; ON CONCRETE BASE OF 6" BRICK WALL AT THE NORTHEAST CORNER OF CELESTIAL ROAD AND MONTFORT DRIVE.
 ELEV=626.61



NOTE

REFER TO SHEET C-04 FOR EROSION CONTROL DETAILS AND ADDITIONAL GENERAL EROSION CONTROL NOTES.

PRIOR TO CONSTRUCTION, CONTRACTOR TO NOTIFY ENGINEER IMMEDIATELY SHOULD THERE BE ANY DISCREPANCIES OR IF EXISTING FIELD CONDITIONS VARY FROM THOSE SHOWN ON THESE PLANS.

EROSION CONTROL SCHEDULE AND PHASING

THE PROJECT SHALL GENERALLY CONFORM TO THE FOLLOWING:

PHASE 1 - GRADING

- CONSTRUCT TEMPORARY CONSTRUCTION ENTRANCE AND SILT FENCE ACCORDING TO THE APPROXIMATE LOCATION AND SHOWN ON GRADING AND EROSION CONTROL PLAN NOTES AND DETAIL SHEET.
- BEGIN CLEARING AND GRADING OF SITE.
- SEED AND RE-VEGETATE SLOPES WHERE SHOWN.

PHASE 2 - UTILITIES

- KEEP ALL STORM WATER POLLUTION PREVENTION MEASURES IN PLACE.
- INSTALL STORM DRAINS AS SPECIFIED ON PLAN SHEETS.
- INSTALL INLET PROTECTION.

PHASE 3 - PAVING

- KEEP ALL STORM WATER POLLUTION PREVENTION MEASURES IN PLACE REMOVE AS NEEDED TO PAVE.
- STABILIZE SUBGRADE.
- PAVE PARKING LOT AND SIDEWALKS AS SPECIFIED ON PLAN SHEETS.
- REMOVE TEMPORARY CONSTRUCTION ENTRANCE.

PHASE 4 - LANDSCAPING AND SOIL STABILIZATION

- RE-VEGETATE LOT AND PARKWAYS.
- LANDSCAPE CONTRACTOR SHALL RE-VEGETATE ALL AREAS RESERVED FOR LANDSCAPE VEGETATIVE COVERS.
- REMOVE EROSION CONTROL DEVICES WHEN GROUND COVER ESTABLISHED.

RECORD DRAWINGS (October 2013)
 Information Provided By:
BOB MOORE CONSTRUCTION

SITE MAP-SITE SPECIFIC NOTES

- CONSTRUCTION ENTRANCE SHALL BE LOCATED SO AS TO PROVIDE THE LEAST AMOUNT OF DISTURBANCE TO THE FLOW OF TRAFFIC IN AND OUT OF THE SITE. ADDITIONALLY, THE CONSTRUCTION ENTRANCE SHALL BE LOCATED TO COINCIDE WITH THE PHASING OF THE PARKING LOT CONSTRUCTION.
- CONTRACTOR SHALL PROVIDE INLET PROTECTION FOR ANY AFFECTED INLETS DOWNSTREAM OF THE PROPOSED IMPROVEMENTS, IF NEEDED.
- THE NATURE OF THIS SITE'S CONSTRUCTION CONSISTS OF CLEARING & SITE PREPARATION, EARTHWORK, PAVING, AND LANDSCAPING.
- SEDIMENTATION BASIN: NEITHER A TEMPORARY NOR PERMANENT SEDIMENTATION BASIN HAS BEEN PROVIDED ON THIS SITE BECAUSE:
 1. SITE IS LESS THAN 10 ACRES IN AREA.
- POST CONSTRUCTION STORM WATER POLLUTION CONTROL MEASURES INCLUDE STABILIZATION BY PERMANENT PAVING AND LANDSCAPING.
- VELOCITY DISSIPATION DEVICES ARE NOT REQUIRED AT THIS SITE.
- DISTURBED PORTIONS OF SITE MUST BE STABILIZED. STABILIZATION PRACTICES MUST BE INITIATED WITHIN 14 DAYS IN PORTIONS OF THE SITE WHERE CONSTRUCTION HAS BEEN EITHER TEMPORARILY OR PERMANENTLY CEASED, UNLESS EXCEPTED WITHIN THE TPDES PERMIT. CONTRACTOR SHALL REMOVE TEMPORARY EROSION CONTROL DEVICES UPON COMPLETION OF STABILIZATION OR PERMANENT DRAINAGE FACILITIES.
- CONTRACTOR IS RESPONSIBLE FOR MODIFYING THE SWPPP/SITE MAP TO INCLUDE BMP'S FOR ANY OFF-SITE MATERIAL WASTE, BORROW OR EQUIPMENT STORAGE AREAS.

STOP! CALL BEFORE YOU DIG

1-800-DIG-TESS
 (at least 72 hours prior to digging)

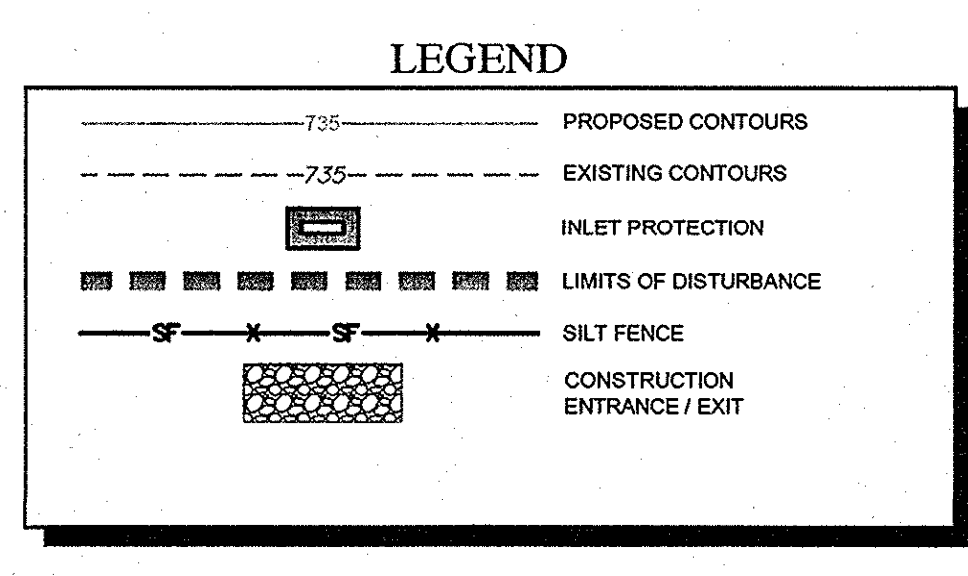
DISTURBED AREA

TOTAL AREA DISTURBED 7.4 AC.

!!WARNING!!

EXISTING UTILITIES IN THE AREA. CONTRACTOR SHALL FIELD VERIFY THE LOCATION OF ALL EXISTING UTILITIES WITH THE PROVIDER PRIOR TO START OF CONSTRUCTION AND SHALL IMMEDIATELY NOTIFY THE ENGINEER OF ANY CONFLICTS DISCOVERED. CONTRACTOR IS RESPONSIBLE FOR COORDINATING UTILITY RELOCATION WHERE NECESSARY AND PROTECTING EXISTING UTILITIES (SHOWN OR NOT SHOWN). IF ANY EXISTING UTILITIES ARE DAMAGED, THE CONTRACTOR SHALL REPLACE THEM AT THEIR OWN EXPENSE.

- ### SITE MAP-GENERAL NOTES
- CONTRACTOR IS SOLELY RESPONSIBLE FOR SELECTION, IMPLEMENTATION, MAINTENANCE, AND EFFECTIVENESS OF ALL SWPPP CONTROLS - CONTROLS SHOWN ON THIS SITE MAP ARE SUGGESTED CONTROLS ONLY.
 - CONTRACTOR SHALL RECORD INSTALLATION, MAINTENANCE OR MODIFICATION, AND REMOVAL DATES FOR EACH BMP EMPLOYED (WHETHER CALLED OUT ON ORIGINAL SWPPP OR NOT) DIRECTLY ON THE SITE MAP.
 - DRAINAGE PATTERNS ARE SHOWN ON THIS PLAN BY PROPOSED AND EXISTING CONTOURS, FLOW ARROWS, AND SLOPES.
 - TEMPORARY AND PERMANENT STABILIZATION PRACTICES AND BMP'S SHALL BE INSTALLED AT THE EARLIEST POSSIBLE TIME DURING THE CONSTRUCTION SEQUENCE. AS AN EXAMPLE, PERIMETER SILT FENCE SHALL BE INSTALLED BEFORE COMMENCEMENT OF ANY GRADING ACTIVITIES. OTHER BMP'S SHALL BE INSTALLED AS SOON AS PRACTICABLE AND SHALL BE MAINTAINED UNTIL FINAL SITE STABILIZATION IS ATTAINED. CONTRACTOR SHALL ALSO REFERENCE CIVIL PLANS SINCE PERMANENT STABILIZATION IS PROVIDED BY LANDSCAPING AND SITE PAVING.
 - BMP'S HAVE BEEN LOCATED AS INDICATED ON THIS PLAN IN ACCORDANCE WITH GENERALLY ACCEPTED ENGINEERING PRACTICES IN ORDER TO MINIMIZE SEDIMENT TRANSFER. FOR EXAMPLE: SILT FENCES LOCATED AT TOE OF SLOPE AND INLET PROTECTION FOR INLETS RECEIVING SEDIMENT FROM SITE RUN-OFF.
 - SANITARY SEWER EFFLUENT IS DISPOSED OF VIA AN ONSITE SEWER SYSTEM CONNECTED TO A MUNICIPAL SEWER SYSTEM.
 - CONTRACTOR SHALL KEEP SEDIMENTATION OFF OF EXISTING PAVEMENT.



EROSION CONTROL CONSTRUCTION PLAN

	INSTALLATION	MAINTENANCE	REMOVAL
CE	CONSTRUCTION ENTRANCE PRIOR TO STARTING CONSTRUCTION	INSPECTIONS SHALL BE MADE WEEKLY AND AFTER RAIN STORM EVENTS TO ENSURE THAT THE FACILITY IS FUNCTIONING PROPERLY. AGGREGATE PAD SHALL BE WASHED DOWN OR REPLACED WHEN SEDIMENT OR MUD HAS CLOGGED THE VOID SPACES BETWEEN THE STONES OR MUD IS BEING TRACKED ONTO THE PUBLIC ROADWAY. RUNOFF FROM WASHDOWN OPERATION SHALL BE FILTERED THROUGH ANOTHER BMP PRIOR TO DRAINING OFF-SITE.	IMMEDIATELY AFTER PAVEMENT PLACEMENT
SF	SILT FENCE PRIOR TO STARTING CONSTRUCTION	INSPECTIONS SHALL BE MADE WEEKLY AND AFTER RAIN STORM EVENTS. SEDIMENT SHALL BE REMOVED FROM BEHIND THE FENCE WHEN THE DEPTH OF SEDIMENT HAS BUILT UP TO ONE-THIRD THE HEIGHT OF THE FENCE ABOVE GRADE.	TO BE REMOVED AFTER PAVING IS COMPLETE AND GRASS COVER IS ESTABLISHED
IP	INLET PROTECTION UPON INLET COMPLETION	INSPECTIONS SHALL BE MADE WEEKLY AND AFTER RAIN STORM EVENTS. SEDIMENT SHALL BE REMOVED FROM BEHIND THE FILTER FABRIC WHEN THE DEPTH OF SEDIMENT HAS BUILT UP TO ONE-THIRD THE HEIGHT OF THE INLET ABOVE GRADE. INSPECT FOR A 2 INCH GAP BETWEEN TOP OF FABRIC AND TOP OF INLET OPENING. INSPECT FOR GAPS BETWEEN THE PAVEMENT AND FILTER FABRIC.	TO BE REMOVED AFTER SITE GRADING AROUND EXIST INLET AND FINAL ACCEPTANCE.

KIMLEY-HORN AND ASSOCIATES, INC.
 State of Texas Registration No. F-928

5750 GENESIS COURT, SUITE 200, FRISCO, TX 75034
 PHONE: 972-335-3580 FAX: 972-335-3779
 WWW.KIMLEY-HORN.COM

KHA PROJECT
 062319038

DATE
 9/27/2012

SCALE AS SHOWN

DESIGNED BY TBB

DRAWN BY AAE

CHECKED BY TBB

VILLAGE ON THE PARKWAY
 ADDISON, TEXAS

EROSION CONTROL PLAN

SHEET NUMBER
 C-03

REVISIONS
 No. DATE BY