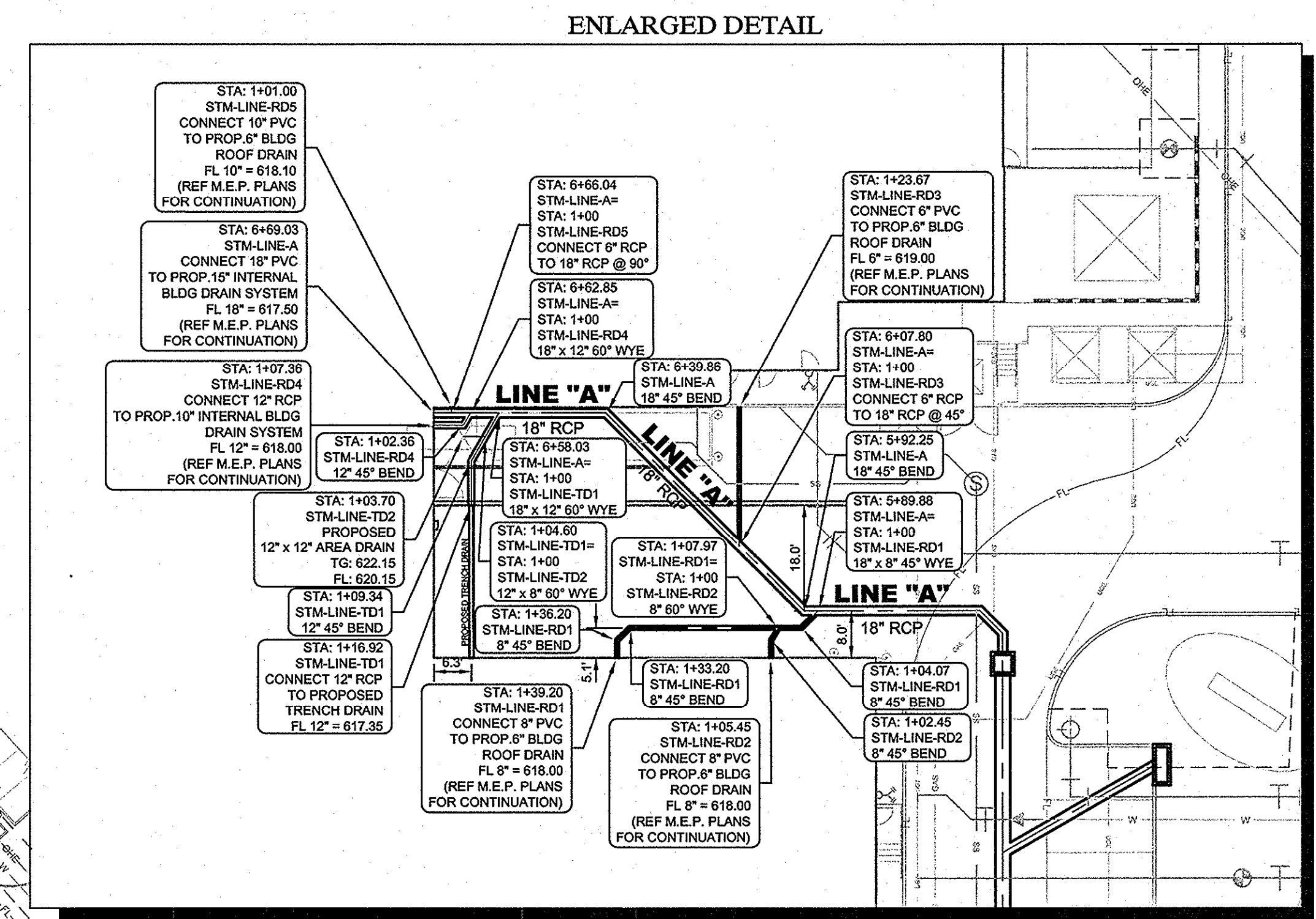
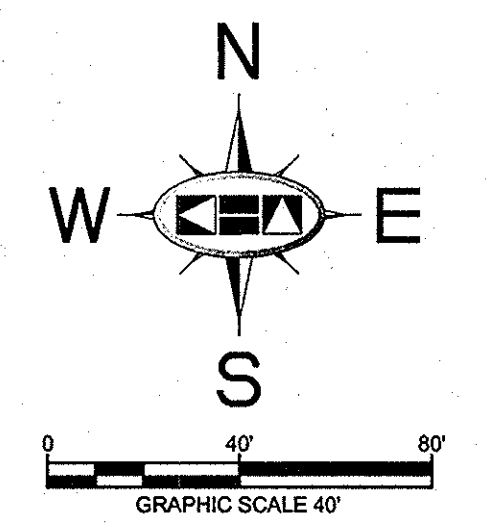
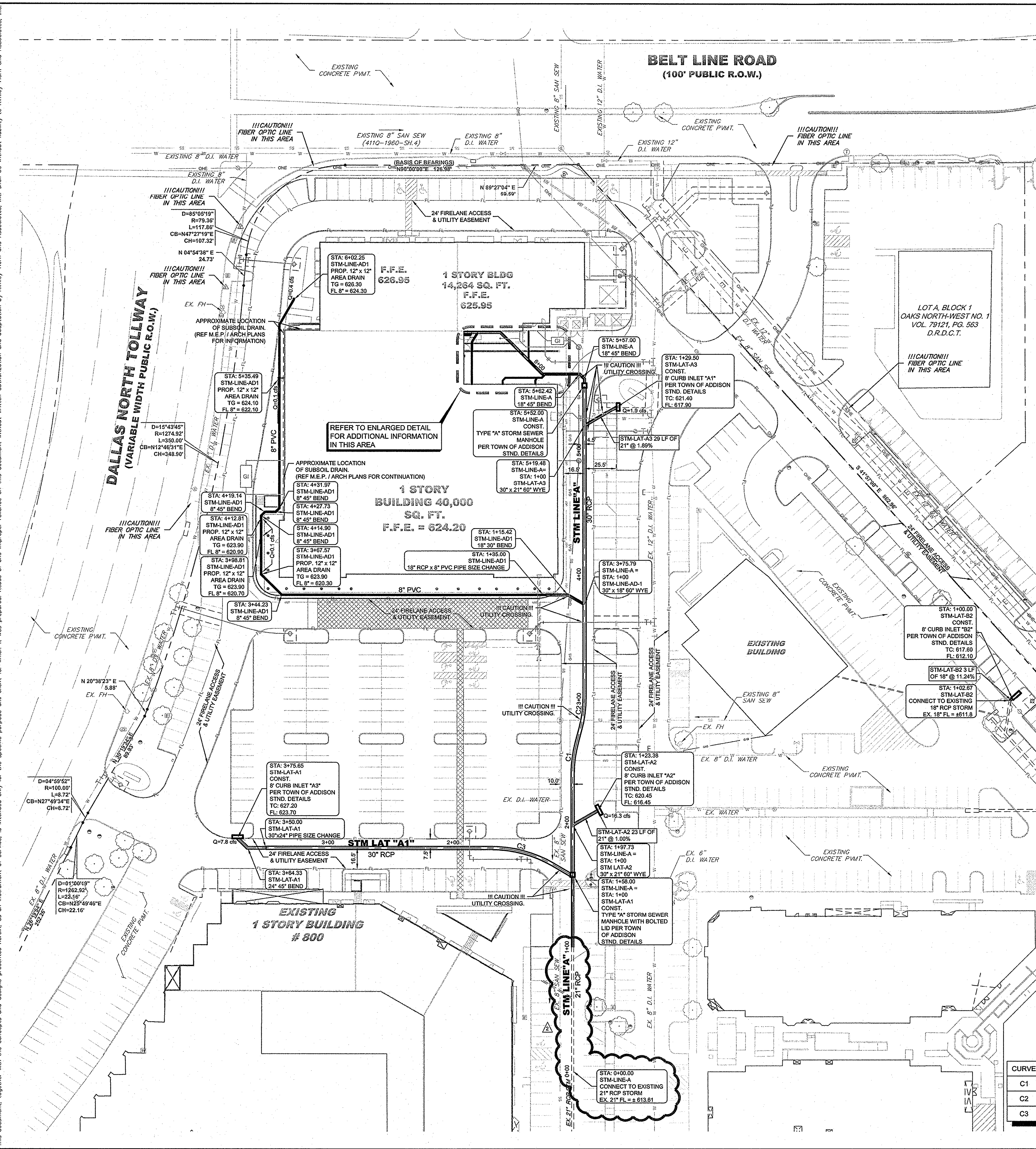


DRAWN BY: BOB MOORE, DATE: 9/27/2012, PROJECT: VILLAGE ON THE PARKWAY, SHEET: STORM SEWER PLAN, NO. 11/15/2012, TBB.



STOP!
CALL BEFORE YOU DIG
DIG TESS
1-800-DIG-TESS
 (at least 72 hours prior to digging)

!!WARNING!!
 EXISTING UTILITIES IN THE AREA. CONTRACTOR SHALL FIELD VERIFY THE LOCATION OF ALL EXISTING UTILITIES WITH THE PROVIDER PRIOR TO START OF CONSTRUCTION AND SHALL IMMEDIATELY NOTIFY THE ENGINEER OF ANY CONFLICTS DISCOVERED. CONTRACTOR IS RESPONSIBLE FOR COORDINATING UTILITY RELOCATION WHERE NECESSARY AND PROTECTING EXISTING UTILITIES (SHOWN OR NOT SHOWN). IF ANY EXISTING UTILITIES ARE DAMAGED, THE CONTRACTOR SHALL REPLACE THEM AT THEIR OWN EXPENSE.

RECORD DRAWINGS
(October 2013)
 Information Provided By:
BOB MOORE
CONSTRUCTION

NOTE
 PRIOR TO CONSTRUCTION, CONTRACTOR TO NOTIFY ENGINEER IMMEDIATELY SHOULD THERE BE ANY DISCREPANCIES OR IF EXISTING FIELD CONDITIONS VARY FROM THOSE SHOWN ON THESE PLANS.

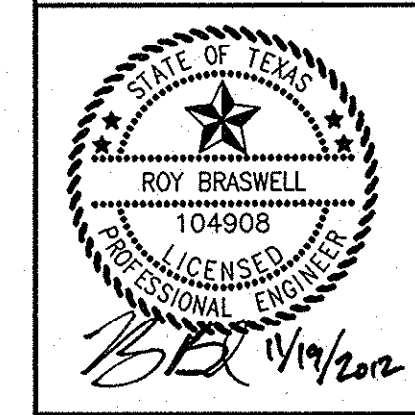
BENCHMARKS
 BM 1 2" BRASS DISK STAMPED "TXDOT COA-5 GPS" 192" SOUTH FROM THE INTERSECTION OF EDWIN LEWIS DRIVE AND QUORUM DRIVE; 2' FROM WEST EDGE OF SIDEWALK; 50.5" FROM THE WEST SIDE OF MEDIAN IN QUORUM DRIVE & 76" FROM FIRE HYDRANT.
 ELEV=630.10
 BM 2 2" BRASS DISK STAMPED "TXDOT COA-5 GPS" AT THE NORTHWEST CORNER OF HAVENSHIRE PLACE AND BELLBROOK DRIVE; 21.80' FROM SANITARY SEWER MANHOLE, 11.10' FROM STREET SIGN & 2.45' TO PC IN SIDEWALK.
 ELEV=693.89
 BM 3 CITY OF DALLAS WATER DEPT. BENCHMARK: "C" ON CONCRETE BASE OF 6" BRICK WALL AT THE NORTHEAST CORNER OF CELESTIAL ROAD AND MONTFORT DRIVE.
 ELEV=626.81

STORM SEWER CENTERLINE CURVE TABLE

CURVE	PC	PT	RADIUS	LENGTH	CHORD BEARING	CHORD	DELTA	TANGENT
C1	2+38.57	2+64.75	100.00'	26.18'	N7°30'00"E	26.11'	15°00'00"	13.17'
C2	2+75.13	3+01.31	100.00'	26.18'	N7°30'00"E	26.11'	15°00'00"	13.17'
C3	1+17.83	1+70.19	100.00'	52.36'	N75°00'00"W	51.76'	30°00'00"	26.79'

NO.	REVISIONS	DATE
1	UPDATED STORM CONNECTION	11/15/2012
2	TBB	

Kimley-Horn and Associates, Inc.
 State of Texas Registration No. F-928
 5750 GENESIS COURT, SUITE 200, FRISCO, TX 75034
 PHONE: 972-335-5580 FAX: 972-335-3779
 WWW.KIMLEY-HORN.COM



KHA PROJECT	06-3319038
DATE	9/27/2012
SCALE	AS SHOWN
DESIGNED BY	TBB
DRAWN BY	BOB MOORE
CHECKED BY	TBB

VILLAGE ON THE PARKWAY
STORM SEWER PLAN
 ADDISON, TEXAS

STORM SEWER PLAN
 SHEET NUMBER
C-11