

CONCRETE ROCK SALT FINISH NOTES

- Apply coarse grained rock salt as concrete reaches initial set. Application of rock salt to be done with hand held granular. Alternative methods must be approved by Architect / Owner prior to beginning of work.
- Cover concrete with one-mil, plastic sheeting and float and trowel surface to trap salt into concrete surface. Remove plastic sheeting immediately after floating and troweling.
- Saturate concrete surface with water and sweep to remove salt after final set.
- The architect reserves the right to reject any and all work executed by the Contractor which does not meet higher expectations and Manufacturers Specifications.
- The Contractor shall construct a sample panel 5'-0" by 5'-0" on site, at no expense to the Owner, for approval by the Architect / Owner prior to commencing work.

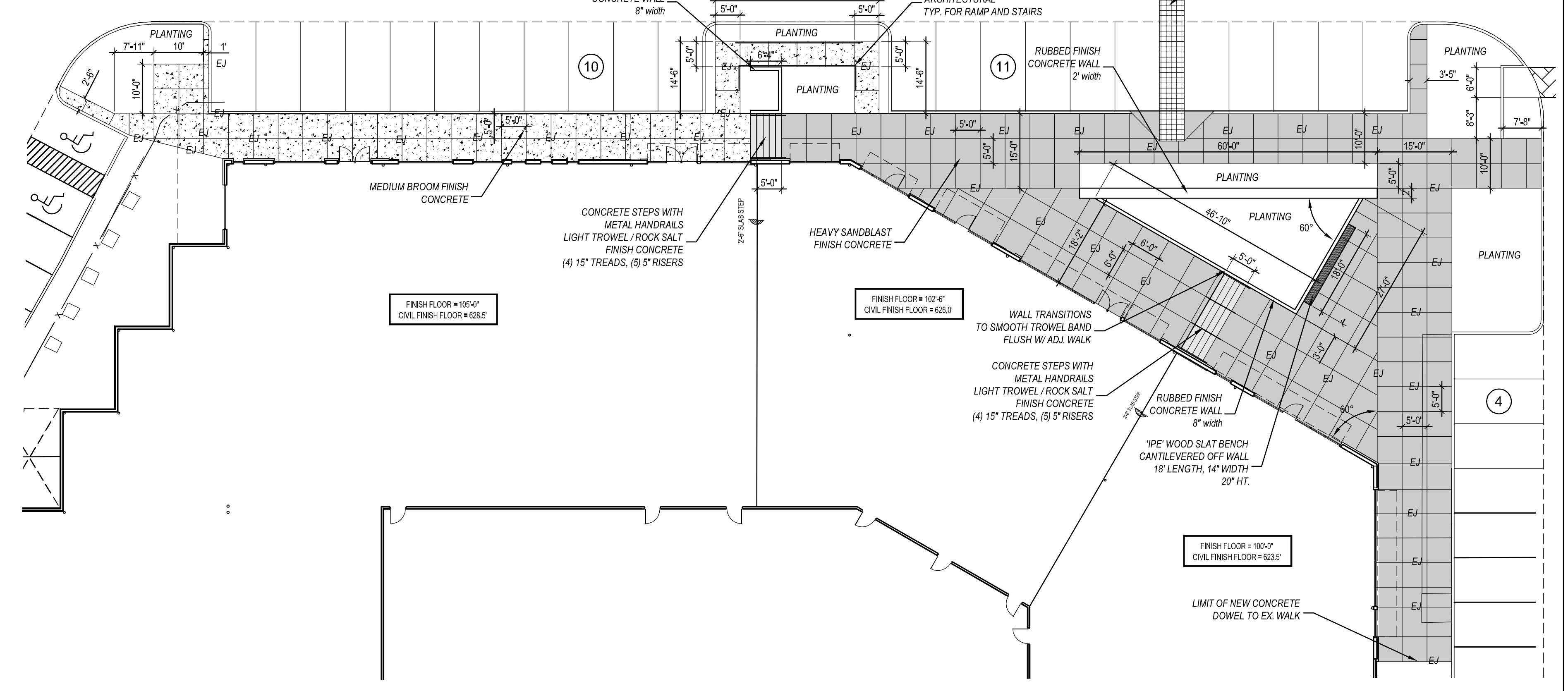
CONCRETE NOTES

- All concrete shall be in accordance with the A.C.I. standard Building Code Requirements for Reinforced Concrete (A.C.I. 318) latest revision.
- All reinforcing steel shall be new domestic deformed mild steel conforming to ASTM A615, Grade 60 (60,000 PSI yield point).
- Reinforcing bar supports and spacers shall be provided in accordance with the Manual of Standard Practice by the Concrete Reinforcing Steel Institute.
- Concrete shall have a minimum compressive strength at 28 days of 3000 PSI.
- Grade beam concrete protection of reinforcement shall be 2" minimum top and sides, 3" minimum bottom.
- Maximum nominal coarse aggregate sizes for concrete in the slabs-on-grade shall be 3/4".
- Concrete slumps shall be 4" maximum, 2" minimum.
- Mortar for walls shall be Type M ASTM C-270, consisting of: one (1) part hydrated Type S Lime, and not more than 3 3/4 parts well graded masonry sand with all proportions by volume.

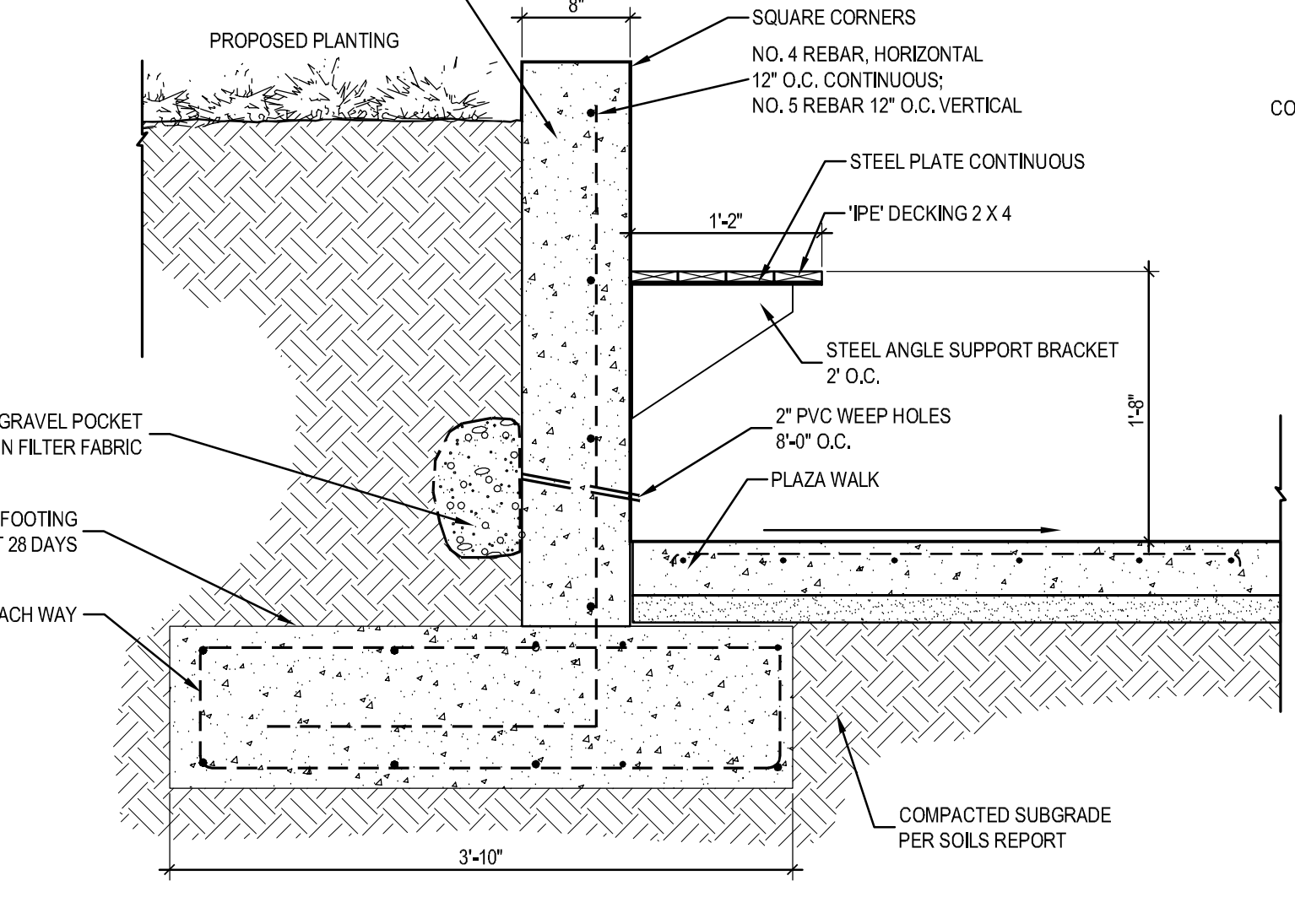
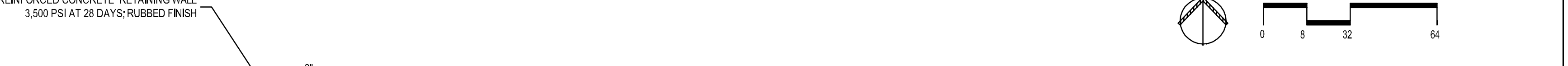
PLANTER NOTES

- Planters shall be: F&D TANK HEAD 48" DIA. STANDARD FLANGED & DISHED sandblasted and clear coat sealed.
- Contractor shall provide turn-key installation of all planters including, but not limited to, shipment, handling, placement, etc.
- Irrigation and drainage holes to be drilled on site by Contractor.
- Bottom of pots to include pea gravel, 2" depth. Filler fabric to separate pea gravel from planting mix.

01 HARDSCAPE PLAN WHOLE FOODS
SCALE: 1" = 16'-0"

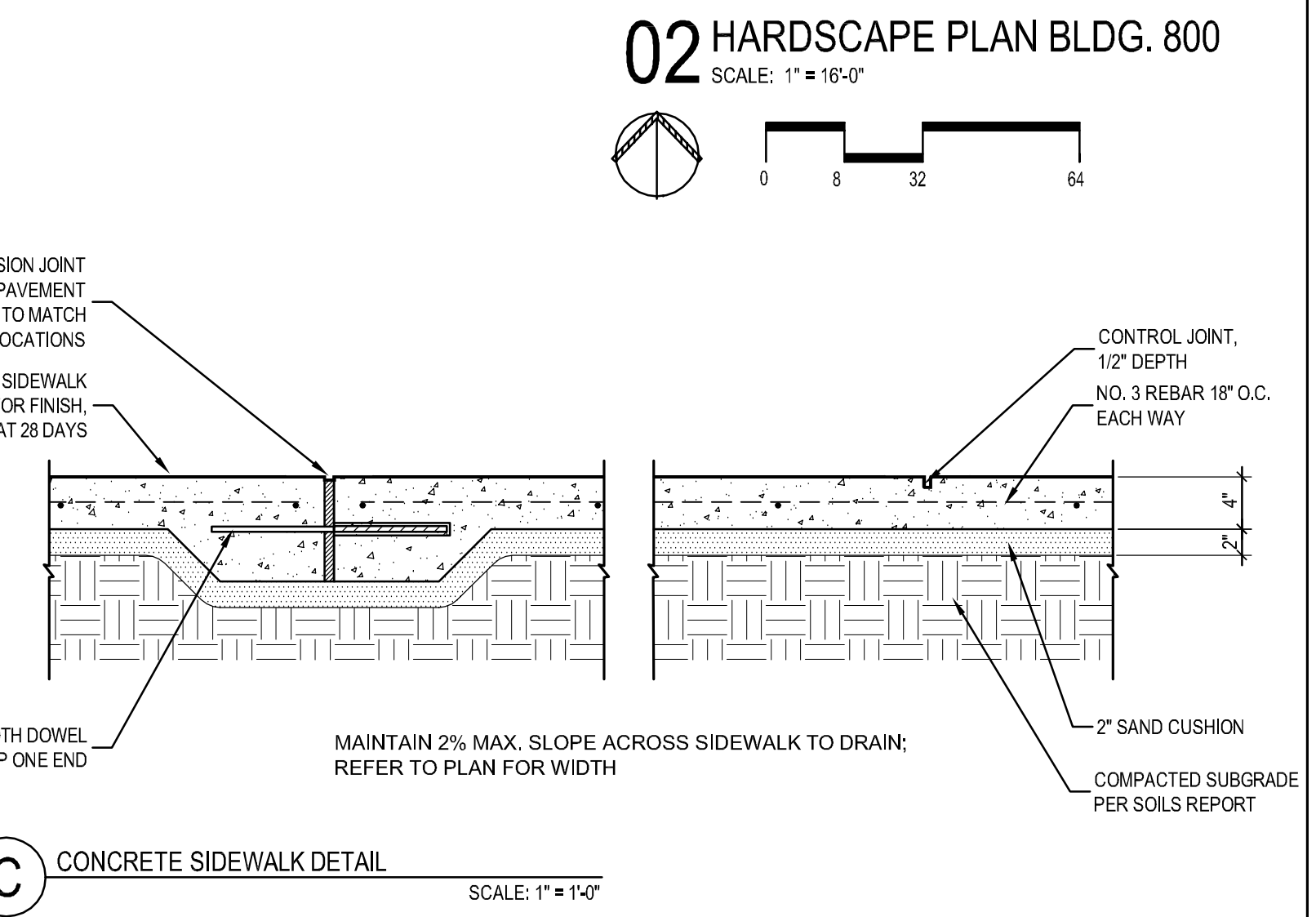
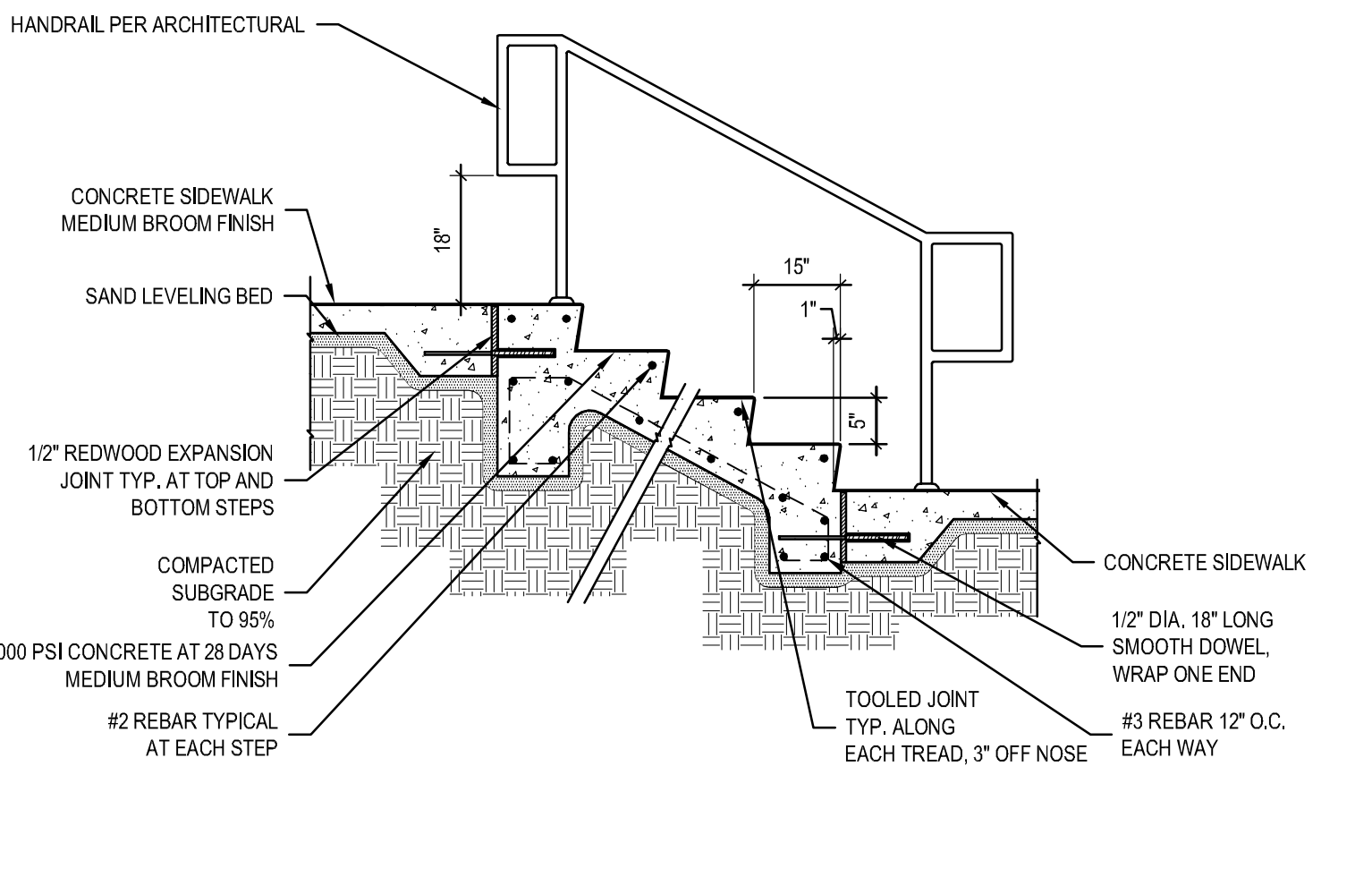


02 HARDSCAPE PLAN BLDG. 800
SCALE: 1" = 16'-0"

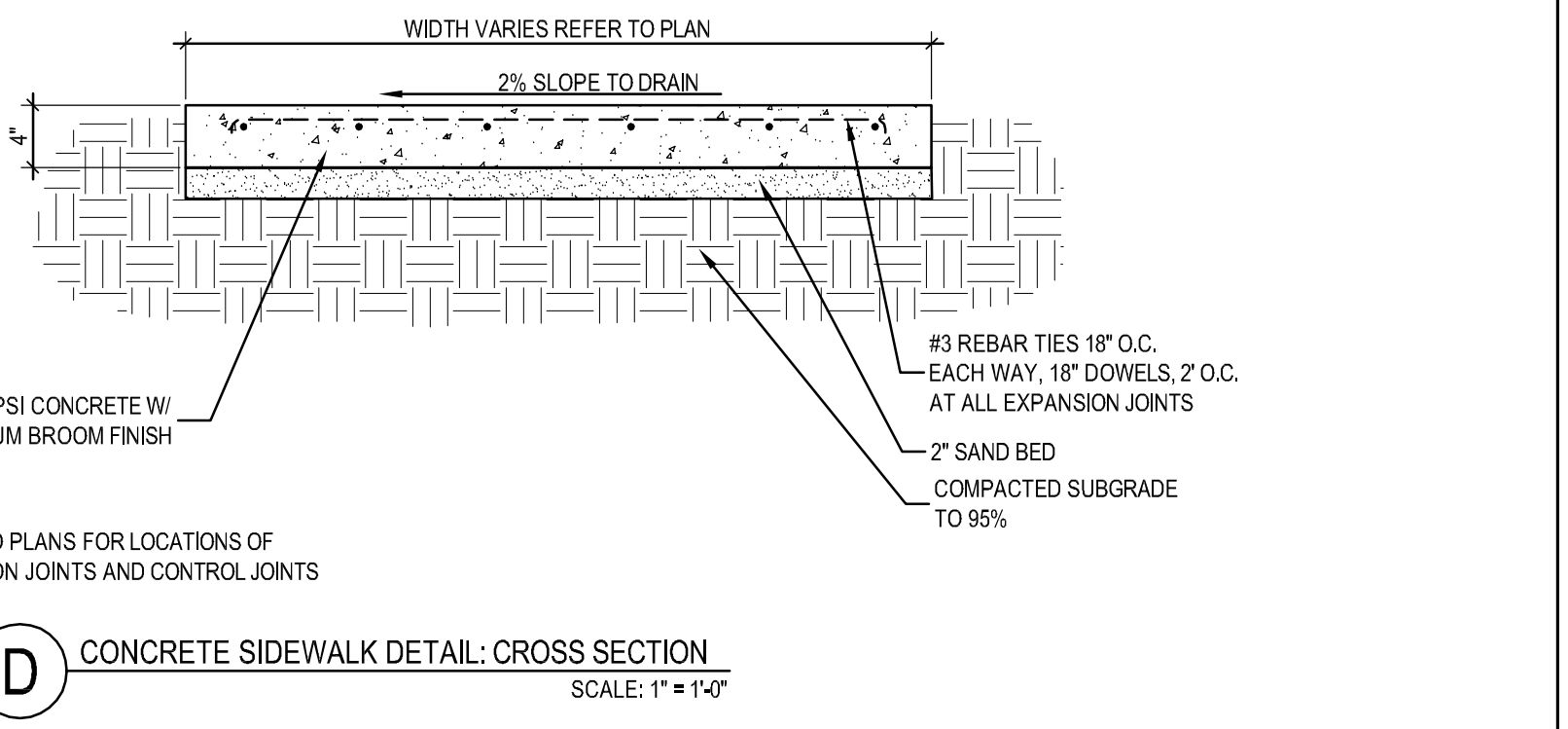


B CONCRETE WALL DETAIL
SCALE: 1" = 1'-0"

A TYPICAL CONCRETE STEP DETAIL
SCALE: 1/2" = 1'-0"

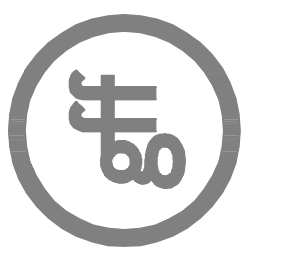


C CONCRETE SIDEWALK DETAIL
SCALE: 1" = 1'-0"



D CONCRETE SIDEWALK DETAIL: CROSS SECTION
SCALE: 1" = 1'-0"

**RECORD DRAWINGS
(October 2013)
Information Provided By:
BOB MOORE
CONSTRUCTION**



No.	Date	Item

REVISIONS	

HARDSCAPE PLAN

Project No.	11013.03
Date	05.25.12
Last Revision	