

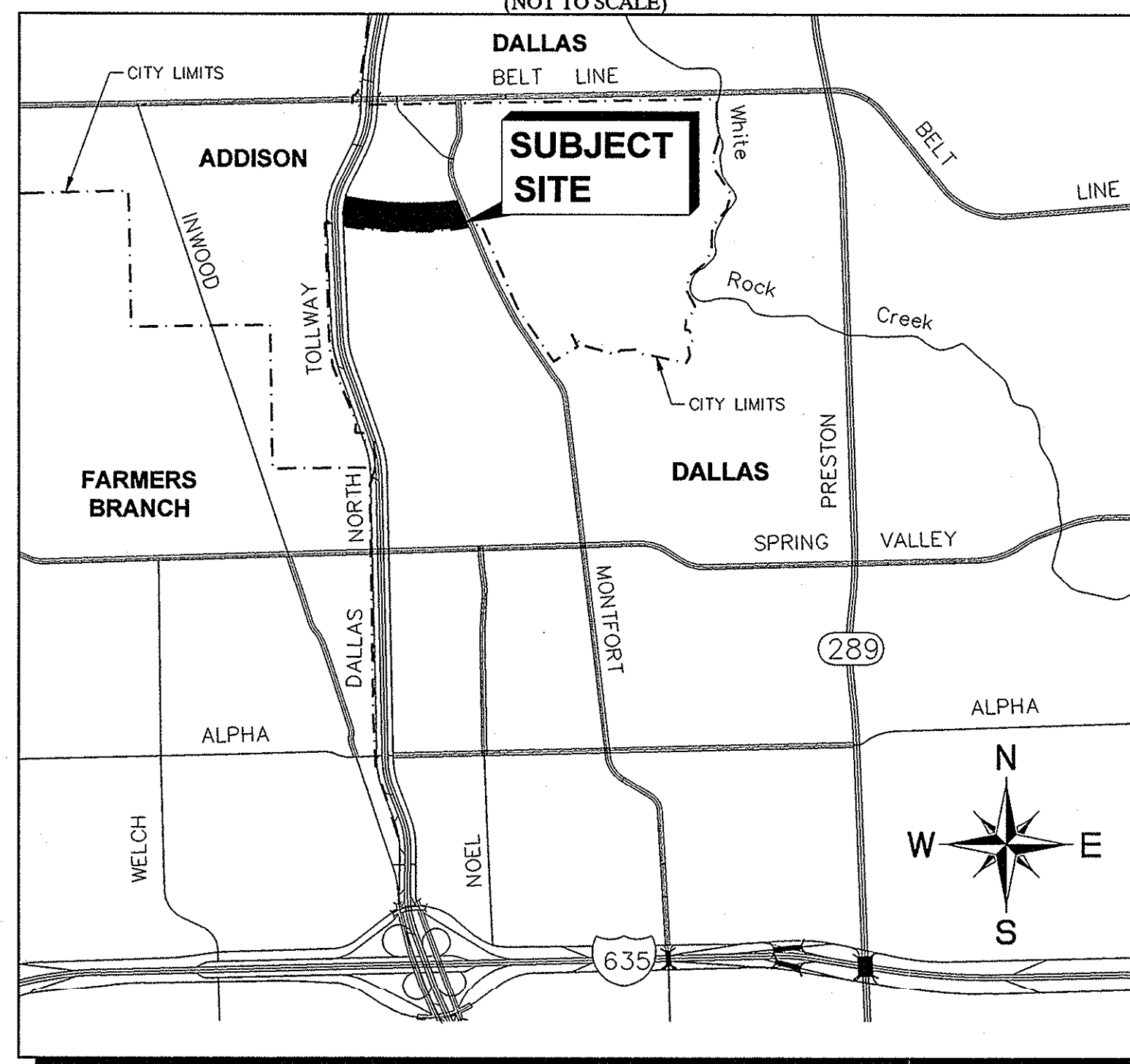
CONSTRUCTION PLANS FOR VILLAGE ON THE PARKWAY PHASE II TOWN OF ADDISON, DALLAS COUNTY, TEXAS

CONSTRUCTION PLANS VILLAGE ON THE PARKWAY PHASE II
TOWN OF ADDISON PROJECT NUMBER: 2013-01

INDEX OF SHEETS

SHEET #	SHEET TITLE	DATE
C-01	COVER SHEET	07/16/2013
1 of 2	AMENDED REPLAT	06/27/2013
2 of 2	AMENDED REPLAT	06/27/2013
C-02	GENERAL NOTES	07/16/2013
C-03	EROSION CONTROL PLAN	07/16/2013
C-04	EROSION CONTROL DETAILS	07/16/2013
C-05	DEMOLITION PLAN	07/16/2013
C-06	GRADING PLAN	07/16/2013
C-07	PAVING & DIMENSION CONTROL PLAN	07/16/2013
C-08	EXISTING CONDITIONS DRAINAGE AREA MAP	07/16/2013
C-09	DRAINAGE AREA MAP	07/16/2013
C-10	STORM SEWER PLAN	07/16/2013
C-11	STORM SEWER PROFILES	07/16/2013
C-12	STORM CALCULATIONS	07/16/2013
C-13	UTILITY PLAN & SANITARY SEWER PROFILE	07/16/2013
C-14	TRAFFIC CONTROL PLAN DALLAS PARKWAY	07/16/2013
C-15	TOWN OF ADDISON STORM DRAINAGE DETAILS	07/16/2013
C-16	TOWN OF ADDISON PAVING DETAILS	07/16/2013
C-17	TOWN OF ADDISON SANITARY SEWER DETAILS	07/16/2013
C-18	TOWN OF ADDISON WATER DETAILS	07/16/2013
L1.01	HARDSCAPE PLANS	5/30/2013
L2.01	LANDSCAPE PLANS	7/17/2013
L2.02	LANDSCAPE SPECS AND DETAILS	5/30/2013
L3.01	SOUTH ZONE LANDSCAPE PLAN	7/17/2013
L3.02	IRRIGATION SPECS AND DETAILS	5/30/2013

VICINITY MAP
(NOT TO SCALE)



BENCHMARKS

BM 1 2" BRASS DISK STAMPED "TXDOT COA-9 GPS" 190'± SOUTH FROM THE INTERSECTION OF EDWIN LEWIS DRIVE AND QUORUM DRIVE; 2'± FROM WEST EDGE OF SIDEWALK, 50.5'± FROM THE WEST SIDE OF MEDIAN IN QUORUM DRIVE & 79'± FROM FIRE HYDRANT.
ELEV=630.10

BM 2 2" BRASS DISK STAMPED "TXDOT COA-10 GPS" AT THE NORTHWEST CORNER OF HAVENSHIRE PLACE AND BELLBROOK DRIVE; 21.80'± FROM SANITARY SEWER MANHOLE, 11.10'± FROM STREET SIGN & 2.45'± TO PC IN SIDEWALK.
ELEV=593.89

BM 3 CITY OF DALLAS WATER DEPT. BENCHMARK: "C" ON CONCRETE BASE OF 6" BRICK WALL AT THE NORTHEAST CORNER OF CELESTIAL ROAD AND MONTFORT DRIVE.
ELEV=626.81

BM 4 STANDARD CITY OF DALLAS WATER DEPT. BENCHMARK ON CONCRETE CURB ON STORM SEWER INLET AT THE NORTHEAST CORNER OF HUGHES LANE AND PRESTON ROAD; 30'± NORTH OF HUGHES LANE.
ELEV=573.18

BM 5 "X" SET ON NORTHWEST CORNER OF CONCRETE PAD FOR SWB TELEPHONE BOX, 15'± EAST OF NORTHBOUND DALLAS NORTH TOLLWAY ACCESS ROAD AND 1,450'± SOUTH OF BELT LINE ROAD.
ELEV=635.30

BM 6 "X" SET ON SOUTHEAST CORNER OF CURB INLET; 15'± WEST OF MONTFORT DRIVE AND 750'± SOUTH OF SAKOWITZ DRIVE.
ELEV=603.67

BM 7 "X" SET ON SOUTHWEST CORNER OF CURB INLET ON SOUTH SIDE OF BELT LINE ROAD AND 200'± EAST OF DALLAS NORTH TOLLWAY.
ELEV=627.26

BM 8 "X" SET ON NORTHEAST CORNER OF "Y" INLET 20'± SOUTH OF SAKOWITZ DRIVE AND 315'± NORTHWEST OF MONTFORT DRIVE.
ELEV=616.09

BM 9 "X" SET ON SOUTHEAST CORNER OF CURB INLET ON EAST SIDE OF DALLAS NORTH TOLLWAY ACCESS ROAD AND 300'± SOUTH OF BELT LINE ROAD.
ELEV=627.34


OWNER / DEVELOPER

VOP, LP
2000 MCKINNEY AVENUE
SUITE 1000
DALLAS, TX 75201
CONTACT: JARROD YATES


ARCHITECT

GOOD FULTON & FARRELL ARCHITECTS
2808 FAIRMOUNT STREET
SUITE 300
DALLAS, TX 75201
PH. (214) 303-1500
CONTACT: MATTHEW BALSAMAN

ENGINEER

 **Kimley-Horn
and Associates, Inc.**
5750 GENESIS COURT
FRISCO, TEXAS 75034
PH. (972) 335-3580
CONTACT: TREY BRASWELL, P.E.
FIRM NO. F-928

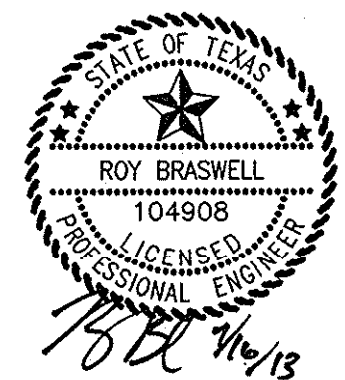
SURVEYOR

 **Kimley-Horn
and Associates, Inc.**
12750 MERIT DRIVE
DALLAS, TEXAS 75251
SUITE 1000
PH. (972) 770-1300
CONTACT: DANA BROWN, R.P.L.S.
FIRM NO. F-928

TOWN OF ADDISON PROJECT #: 2013-01
JULY 16, 2013

STOP!
CALL BEFORE YOU DIG
DIG TESS
1-800-DIG-TESS
(at least 72 hours prior to digging)

**RECORD DRAWINGS
(May 2014)**
Information Provided By:
**BOB MOORE
CONSTRUCTION**



PLOTTED BY: WHITE/SABARWATI THORNTON/10/10/13 AM
 DWG NAME: K:\PROJECTS\2013\2013-01\2013-01-01\2013-01-01-01\2013-01-01-01-01.dwg
 LAST SAVED: 7/16/2013 10:16 AM
 This document, together with the concepts and designs presented herein, is an instrument of service, as an instrument of service, is intended only for the specific purpose and client for which it was prepared. Reuse of and improper reliance on this document without written authorization and adaptation by Kimley-Horn and Associates, Inc. shall be without liability to Kimley-Horn and Associates, Inc.