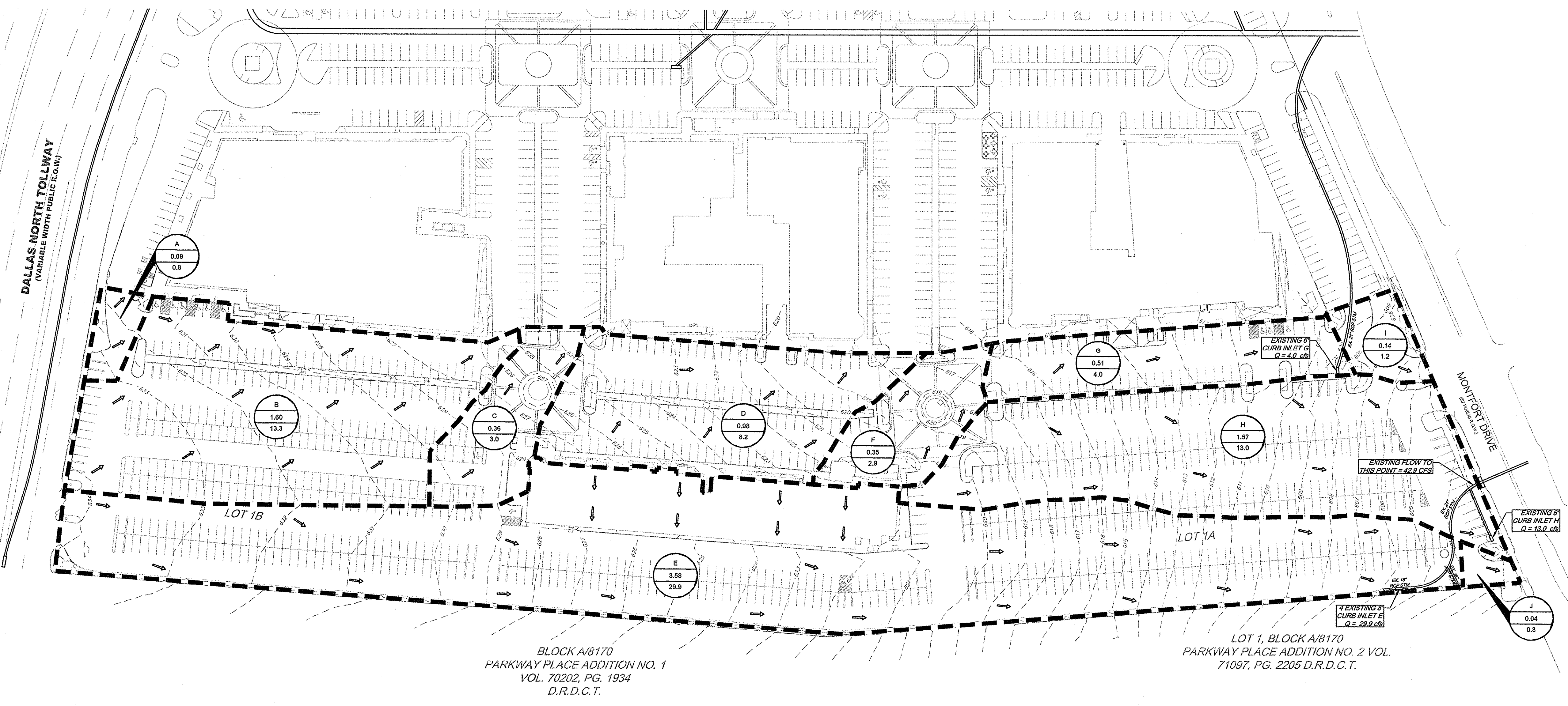
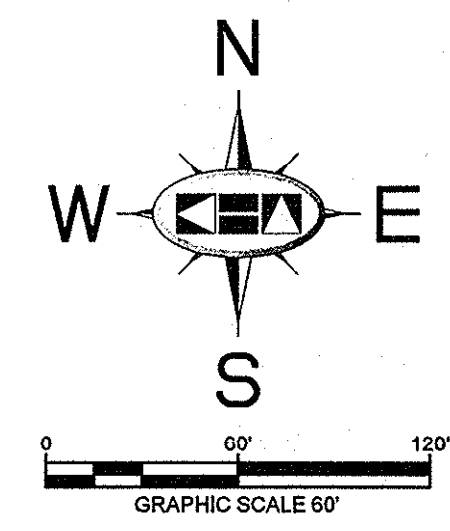


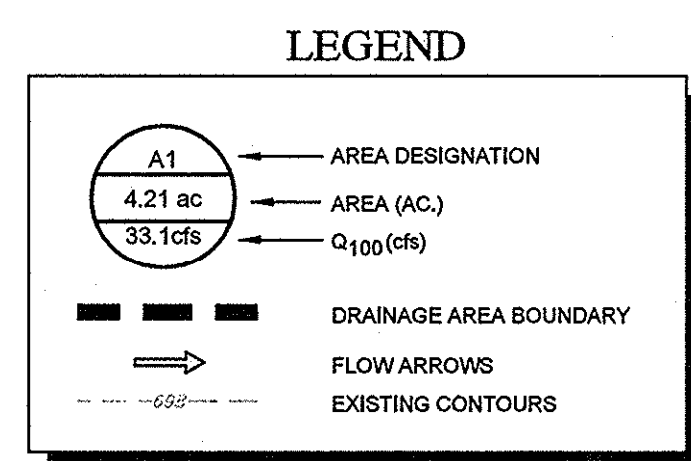
DESIGNED BY: KIMLEY-HORN AND ASSOCIATES, INC. DATE: 07/16/2013  
 DRAWN BY: TBB  
 CHECKED BY: TBB  
 PROJECT NO.: 063319038  
 SHEET NO.: 1 OF 1  
 THIS DOCUMENT, TOGETHER WITH THE CONCEPTS AND DESIGNS PRESENTED HEREIN, IS AN INSTRUMENT OF SERVICE, IN INTENDED ONLY FOR THE SPECIFIC PURPOSE AND CLIENT FOR WHICH IT WAS PREPARED. REUSE OF AND IMPROPER RELIANCE ON THIS DOCUMENT WITHOUT WRITTEN AUTHORIZATION AND ADOPTION BY KIMLEY-HORN AND ASSOCIATES, INC. SHALL BE WITHOUT LIABILITY TO KIMLEY-HORN AND ASSOCIATES, INC.



**EXISTING CONDITION  
DRAINAGE AREA CALCULATIONS**

DRAINAGE AREA NO.	RUNOFF COEFF. "C"	RAINFALL INTENSITY "I" (IN/HOUR)	TC (MIN.)	AREA (AC.)	Q <sub>100</sub> (CFS)	COLLECTION POINT
A	0.90	9.27	10	0.09	0.8	OFFSITE INLET
B	0.90	9.27	10	1.60	13.3	OFFSITE INLET
C	0.90	9.27	10	0.36	3.0	OFFSITE INLET
D	0.90	9.27	10	0.98	8.2	OFFSITE INLET
E	0.90	9.27	10	3.58	29.9	EXISTING CURB INLET E
F	0.90	9.27	10	0.35	2.9	OFFSITE INLET
G	0.85	9.27	10	0.51	4.0	EXISTING CURB INLET G
H	0.90	9.27	10	1.57	13.0	EXISTING CURB INLET H
I	0.90	9.27	10	0.14	1.2	MONTFORT DRIVE SYSTEM
J	0.90	9.27	10	0.04	0.3	MONTFORT DRIVE SYSTEM

- NOTES**
- DRAINAGE AREA "A" INFORMATION IS FROM AREA "VI" FROM THE VILLAGE ON THE PARKWAY, VILLAGE PARKWAY VENTURE BY ALBERT H. HALFF ASSOCIATES, INC. DATED MAY 1978.
  - DRAINAGE AREA "B" INFORMATION IS FROM AREA "VII" FROM THE VILLAGE ON THE PARKWAY, VILLAGE PARKWAY VENTURE BY ALBERT H. HALFF ASSOCIATES, INC. DATED MAY 1978.
  - DRAINAGE AREA "C" INFORMATION IS FROM AREA "V" FROM THE VILLAGE ON THE PARKWAY, VILLAGE PARKWAY VENTURE BY ALBERT H. HALFF ASSOCIATES, INC. DATED MAY 1978.
  - DRAINAGE AREA "D" INFORMATION IS FROM AREA "IX" FROM THE VILLAGE ON THE PARKWAY, VILLAGE PARKWAY VENTURE BY ALBERT H. HALFF ASSOCIATES, INC. DATED MAY 1978.
  - DRAINAGE AREA "E" INFORMATION IS FROM AREA "VIII" FROM THE VILLAGE ON THE PARKWAY, VILLAGE PARKWAY VENTURE BY ALBERT H. HALFF ASSOCIATES, INC. DATED FEBRUARY 1979.
  - DRAINAGE AREA "F" INFORMATION IS FROM AREA "XII" FROM THE VILLAGE ON THE PARKWAY, VILLAGE PARKWAY VENTURE BY ALBERT H. HALFF ASSOCIATES, INC. DATED FEBRUARY 1979.
  - DRAINAGE AREA "G" INFORMATION IS FROM AREA "XIV" FROM THE VILLAGE ON THE PARKWAY, VILLAGE PARKWAY VENTURE BY ALBERT H. HALFF ASSOCIATES, INC. DATED FEBRUARY 1979.
  - DRAINAGE AREA "H" INFORMATION IS FROM AREA "XVI" FROM THE VILLAGE ON THE PARKWAY, VILLAGE PARKWAY VENTURE BY ALBERT H. HALFF ASSOCIATES, INC. DATED FEBRUARY 1979.
  - DRAINAGE AREA "I" INFORMATION IS FROM AREA "XVIII" FROM THE VILLAGE ON THE PARKWAY, VILLAGE PARKWAY VENTURE BY ALBERT H. HALFF ASSOCIATES, INC. DATED FEBRUARY 1979.
  - DRAINAGE AREA "J" INFORMATION IS FROM AREA "XVII" FROM THE VILLAGE ON THE PARKWAY, VILLAGE PARKWAY VENTURE BY ALBERT H. HALFF ASSOCIATES, INC. DATED FEBRUARY 1979.



**FLOODPLAIN NOTE**

AS DETERMINED BY THE FLOOD INSURANCE RATE MAPS FOR DALLAS COUNTY, THE SUBJECT PROPERTY DOES NOT APPEAR TO LIE WITHIN A SPECIAL FLOOD HAZARD AREA (100 YEAR FLOOD), MAP DATE 09/23/01 COMMUNITY PANEL NO. 48113C0180 J. SUBJECT LOT IS LOCATED IN ZONE "X". IF THIS SITE IS NOT WITHIN AN IDENTIFIED FLOOD HAZARD AREA, THIS FLOOD STATEMENT DOES NOT IMPLY THAT THE PROPERTY AND/OR STRUCTURES THEREON WILL BE FREE FROM FLOODING OR FLOOD DAMAGE. ON RARE OCCASIONS, GREATER FLOODS CAN AND WILL OCCUR AND FLOOD HEIGHTS MAY BE INCREASED BY MAN-MADE OR NATURAL CAUSES. THIS FLOOD STATEMENT SHALL NOT CREATE LIABILITY ON THE PART OF THE SURVEYOR OR ENGINEER.

**RECORD DRAWINGS  
(May 2014)**  
Information Provided By:  
**BOB MOORE  
CONSTRUCTION**

**BENCHMARKS**

BM 5 (12) SET ON NORTHWEST CORNER OF CONCRETE PAD FOR 3WB TELEPHONE BOX, 15% EAST OF NORTHBOND DALLAS NORTH TOLLWAY ACCESS ROAD AND 1.45% SOUTH OF BELT LINE ROAD.  
ELEV=635.30

BM 6 (12) SET ON SOUTHEAST CORNER OF CURB INLET, 15% WEST OF MONTFORT DRIVE AND 75% SOUTH OF SAKOWITZ DRIVE.  
ELEV=603.67

BM 9 (12) SET ON SOUTHEAST CORNER OF CURB INLET ON EAST SIDE OF DALLAS NORTH TOLLWAY ACCESS ROAD AND 300% SOUTH OF BELT LINE ROAD.  
ELEV=627.34

**EXISTING  
CONDITIONS  
DRAINAGE AREA MAP**

**VILLAGE  
ON THE PARKWAY  
PHASE II  
ADDISON, TEXAS**

**Kimley-Horn  
and Associates, Inc.**  
State of Texas Registration No. F-928  
5750 GENESIS COURT, SUITE 200, FRISCO, TX 75034  
PHONE: 972-335-3580 FAX: 972-335-3779  
WWW.KIMLEY-HORN.COM

DATE: \_\_\_\_\_ BY: \_\_\_\_\_  
REVISIONS: \_\_\_\_\_

KHA PROJECT: 063319038  
DATE: 07/16/2013  
SCALE: AS SHOWN  
DESIGNED BY: TBB  
DRAWN BY: AAE  
CHECKED BY: TBB

SHEET NUMBER  
**C-08**