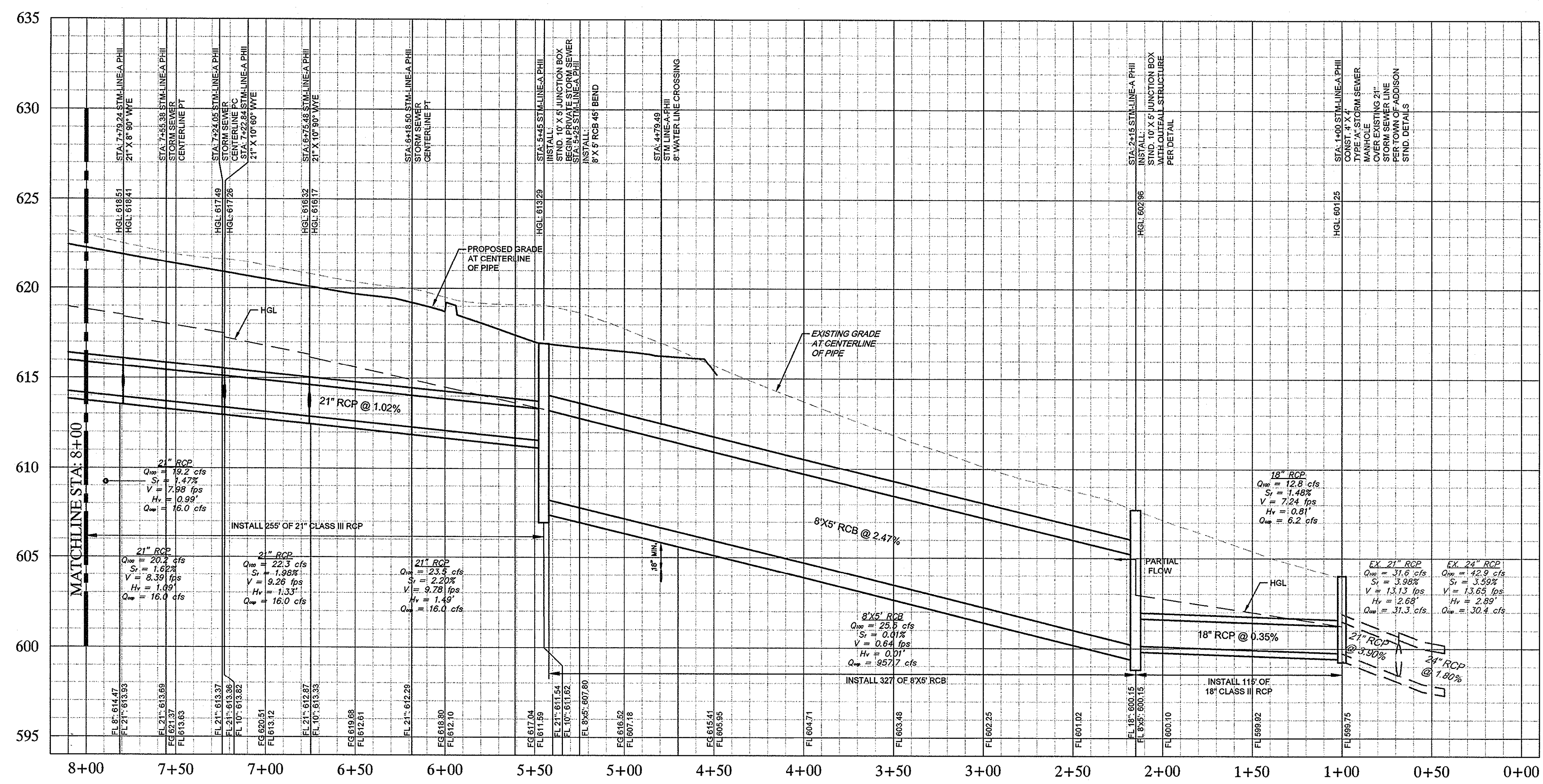
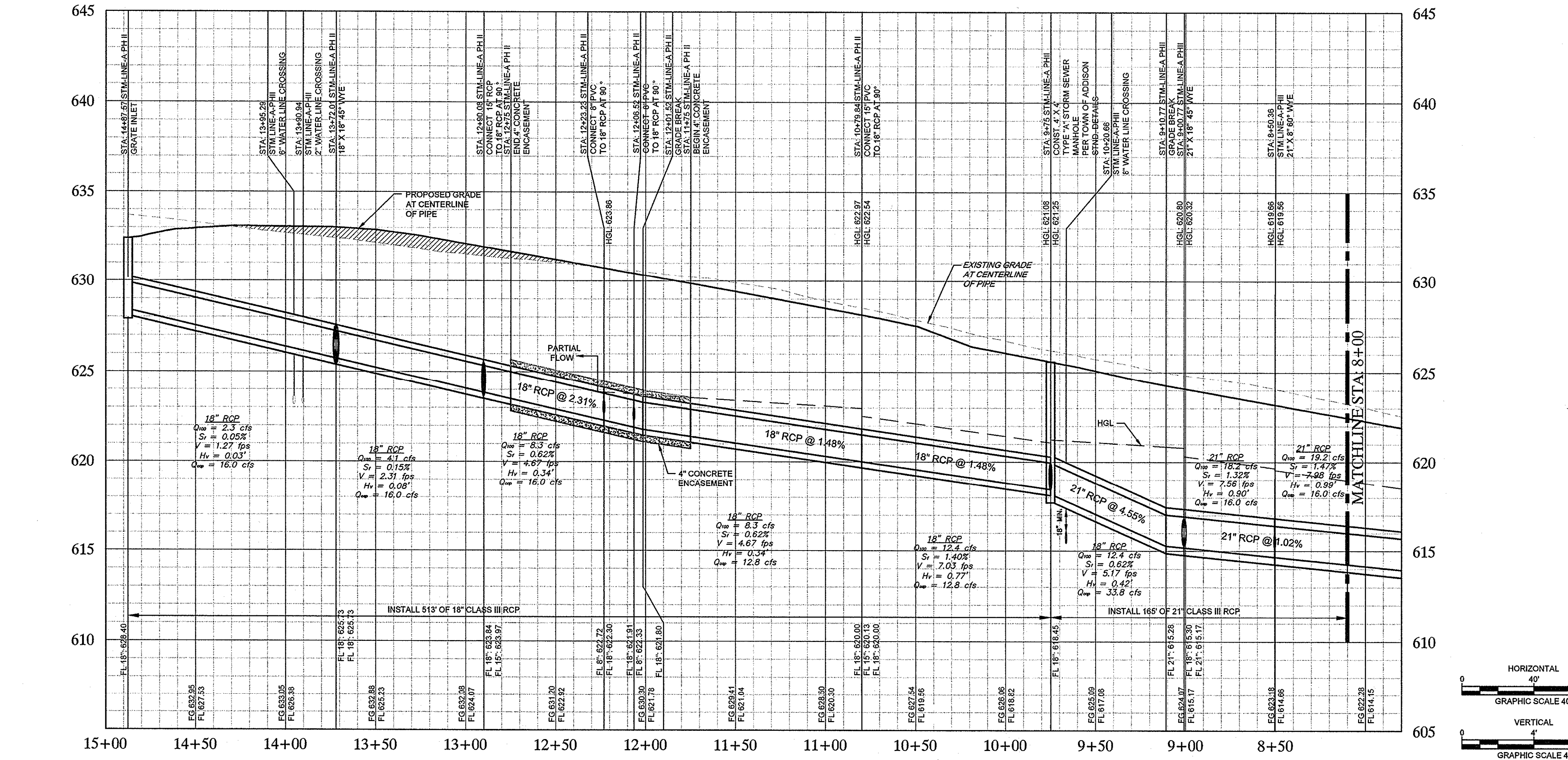


PROTOTTED BY WHITE SARAH RUTH THORNTON DSK/AM  
DWS/NAME KIRILL VILKIN/VILKIN/8583-VORONOV/PLANSET PHASE II-C-11-STORM SEWER PROFILES  
LAST SAVID 7/16/2013 11:41 AM

This document, together with the concepts and designs presented herein, is an instrument of service, and its preparation and use are intended only for the specific purpose and client for which it was prepared. Reuse of and improper reliance on this document without written authorization and adaptation by Kimley-Horn and Associates, Inc. shall be without liability to Kimley-Horn and Associates, Inc.



**STORM LINE "A" (STA: 1+00 - 8+00)**



**STORM LINE "A" (STA: 8+00 - END)**

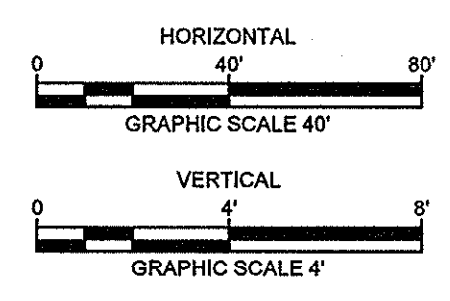
**RECORD DRAWINGS**  
**(May 2014)**  
Information Provided By:  
**BOB MOORE**  
**CONSTRUCTION**

**NOTE**  
PRIOR TO CONSTRUCTION, CONTRACTOR TO NOTIFY ENGINEER IMMEDIATELY SHOULD THERE BE ANY DISCREPANCIES OR IF EXISTING FIELD CONDITIONS VARY FROM THOSE SHOWN ON THESE PLANS.

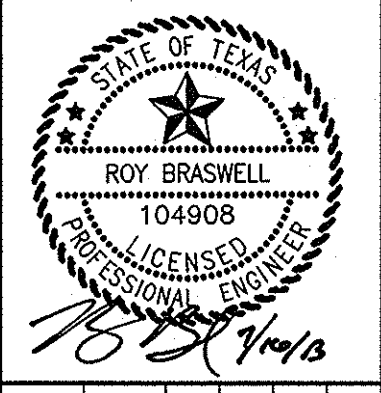
**!!WARNING!!**  
EXISTING UTILITIES IN THE AREA, CONTRACTOR SHALL FIELD VERIFY THE LOCATION OF ALL EXISTING UTILITIES WITH THE PROVIDER PRIOR TO START OF CONSTRUCTION AND SHALL IMMEDIATELY NOTIFY THE ENGINEER OF ANY CONFLICTS DISCOVERED. CONTRACTOR IS RESPONSIBLE FOR COORDINATING UTILITY RELOCATION WHERE NECESSARY AND PROTECTING EXISTING UTILITIES SHOWN OR NOT SHOWN). IF ANY EXISTING UTILITIES ARE DAMAGED, THE CONTRACTOR SHALL REPLACE THEM AT THEIR OWN EXPENSE.

**STOP!**  
**CALL BEFORE YOU DIG**  
**DIG TESS**  
**1-800-DIG-TESS**  
(at least 72 hours prior to digging)

**BENCHMARKS**  
BM 5 SET ON NORTHWEST CORNER OF CONCRETE PAD FOR SWB TELEPHONE BOX, 15% EAST OF NORTHBOUND DALLAS NORTH TOLLWAY ACCESS ROAD AND 1,469% SOUTH OF BELT LINE ROAD.  
ELEV=635.30  
BM 6 SET ON SOUTHEAST CORNER OF CURB INLET, 15% WEST OF MONTFORT DRIVE AND 759% SOUTH OF SAKOWITZ DRIVE.  
ELEV=603.67  
BM 9 SET ON SOUTHEAST CORNER OF CURB INLET ON EAST SIDE OF DALLAS NORTH TOLLWAY ACCESS ROAD AND 300% SOUTH OF BELT LINE ROAD.  
ELEV=627.34



**Kimley-Horn and Associates, Inc.**  
State of Texas Registration No. F-926  
5750 GENESIS COURT, SUITE 200, FRISCO, TX 75034  
PHONE: 972-335-3550 FAX: 972-335-3779  
WWW.KIMLEY-HORN.COM



KHA PROJECT 0633190.38  
DATE 07/16/2013  
SCALE AS SHOWN  
DESIGNED BY TBB  
DRAWN BY PAE  
CHECKED BY TBB

**VILLAGE ON THE PARKWAY PHASE II**  
ADDISON, TEXAS

**STORM SEWER PROFILES**

REVISIONS

No.	DATE	BY
1	11/15/2012	TBB