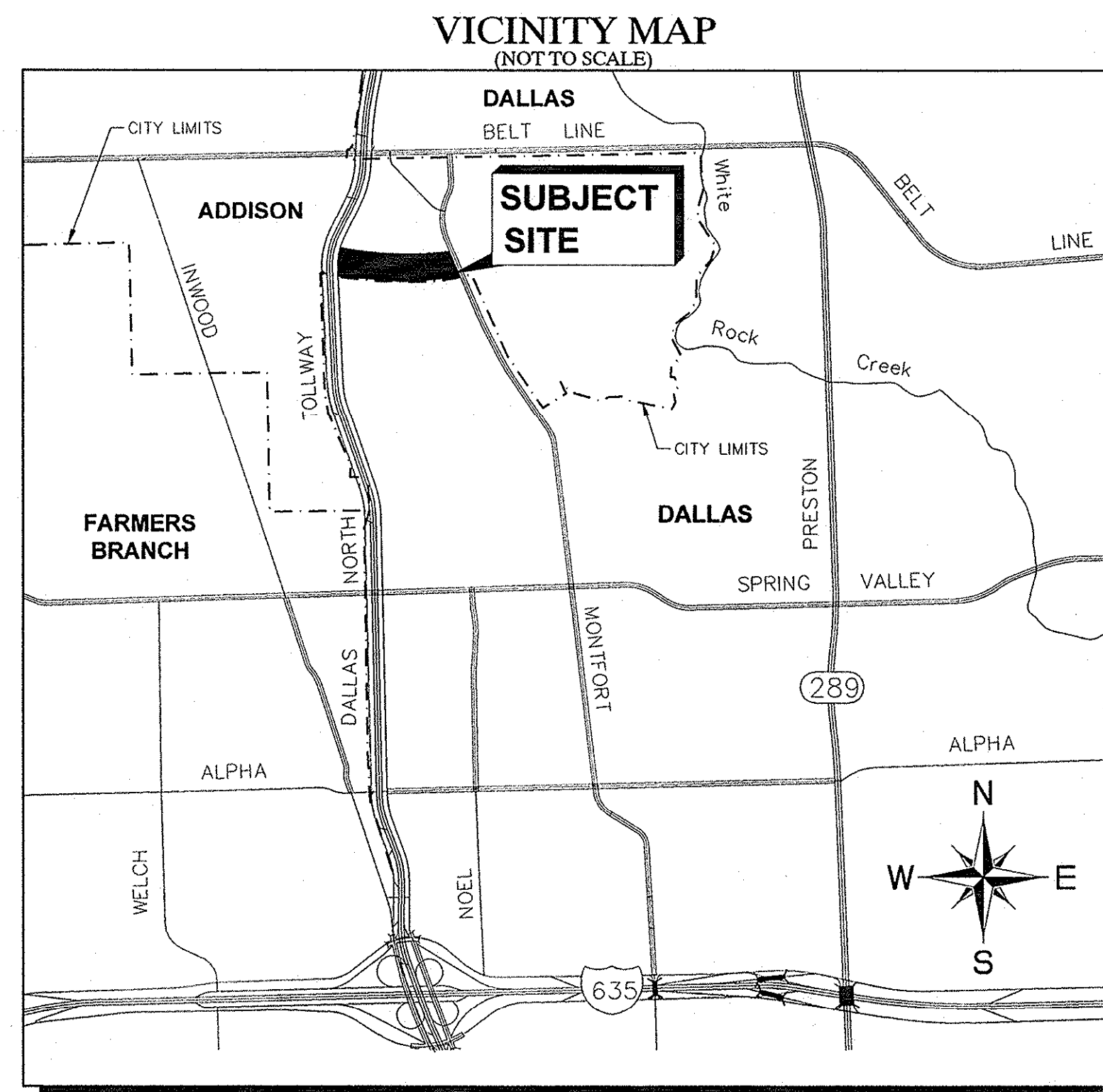


CONSTRUCTION PLANS FOR VILLAGE ON THE PARKWAY PHASE II TOWN OF ADDISON, DALLAS COUNTY, TEXAS

CONSTRUCTION PLANS VILLAGE ON THE PARKWAY PHASE II
TOWN OF ADDISON PROJECT NUMBER: 2013-01

INDEX OF SHEETS

SHEET #	SHEET TITLE	DATE
C-01	COVER SHEET	06/14/2013
1 of 2	AMENDED REPLAT	NOT INCLUDED
2 of 2	AMENDED REPLAT	NOT INCLUDED
C-02	GENERAL NOTES	06/14/2013
C-03	EROSION CONTROL PLAN	06/14/2013
C-04	EROSION CONTROL DETAILS	06/14/2013
C-05	DEMOLITION PLAN	06/14/2013
C-06	GRADING PLAN	06/14/2013
C-07	PAVING & DIMENSION CONTROL PLAN	06/14/2013
C-08	EXISTING CONDITIONS DRAINAGE AREA MAP	NOT INCLUDED
C-09	DRAINAGE AREA MAP	NOT INCLUDED
C-10	STORM SEWER PLAN	NOT INCLUDED
C-11	STORM SEWER PROFILES	NOT INCLUDED
C-12	STORM CALCULATIONS	NOT INCLUDED
C-13	UTILITY PLAN & SANITARY SEWER PROFILE	06/14/2013
C-14	TRAFFIC CONTROL PLAN DALLAS PARKWAY	06/14/2013
C-15	TOWN OF ADDISON STORM DRAINAGE DETAILS	NOT INCLUDED
C-16	TOWN OF ADDISON PAVING DETAILS	06/14/2013
C-17	TOWN OF ADDISON SANITARY SEWER DETAILS	06/14/2013
C-18	TOWN OF ADDISON WATER DETAILS	06/14/2013



BENCHMARKS

BM 1 2" BRASS DISK STAMPED "TXDOT COA-5 GPS" 190" SOUTH FROM THE INTERSECTION OF EDWIN LEWIS DRIVE AND QUORUM DRIVE; 2" FROM WEST EDGE OF SIDEWALK, 50.5" FROM THE WEST SIDE OF MEDIAN IN QUORUM DRIVE & 76" FROM FIRE HYDRANT.
ELEV=630.10

BM 2 2" BRASS DISK STAMPED "TXDOT COA-10 GPS" AT THE NORTHWEST CORNER OF HAVENSHIRE PLACE AND BELLBROOK DRIVE; 21.80" FROM SANITARY SEWER MANHOLE, 11.10" FROM STREET SIGN & 2.45" TO PC IN SIDEWALK.
ELEV=693.89

BM 3 CITY OF DALLAS WATER DEPT. BENCHMARK; □ ON CONCRETE BASE OF 6" BRICK WALL AT THE NORTHEAST CORNER OF CELESTIAL ROAD AND MONTFORT DRIVE.
ELEV=626.61

BM 4 STANDARD CITY OF DALLAS WATER DEPT. BENCHMARK ON CONCRETE CURB ON STORM SEWER INLET AT THE NORTHEAST CORNER OF HUGHES LANE AND PRESTON ROAD; 30" NORTH OF HUGHES LANE.
ELEV=573.18

BM 5 □ SET ON NORTHWEST CORNER OF CONCRETE PAD FOR SWB TELEPHONE BOX, 15" EAST OF NORTHBOUND DALLAS NORTH TOLLWAY ACCESS ROAD AND 1,450" SOUTH OF BELT LINE ROAD.
ELEV=635.30

BM 6 □ SET ON SOUTHEAST CORNER OF CURB INLET; 15" WEST OF MONTFORT DRIVE AND 750" SOUTH OF SAKOWITZ DRIVE.
ELEV=603.67

BM 7 □ SET ON SOUTHWEST CORNER OF CURB INLET ON SOUTH SIDE OF BELT LINE ROAD AND 200" EAST OF DALLAS NORTH TOLLWAY.
ELEV=627.26

BM 8 □ SET ON NORTHEAST CORNER OF "Y" INLET 20" SOUTH OF SAKOWITZ DRIVE AND 315" NORTHWEST OF MONTFORT DRIVE.
ELEV=616.09

BM 9 □ SET ON SOUTHEAST CORNER OF CURB INLET ON EAST SIDE OF DALLAS NORTH TOLLWAY ACCESS ROAD AND 300" SOUTH OF BELT LINE ROAD.
ELEV=627.34

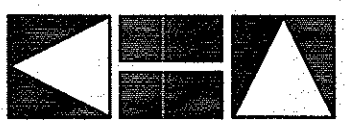
OWNER / DEVELOPER

VOP, LP
2000 MCKINNEY AVENUE
SUITE 1000
DALLAS, TX 75201
CONTACT: JARROD YATES

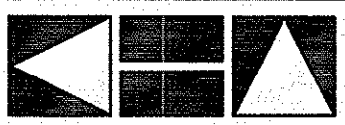
ARCHITECT

GOOD FULTON & FARRELL ARCHITECTS
2808 FAIRMOUNT STREET
SUITE 300
DALLAS, TX 75201
PH. (214) 303-1500
CONTACT: MATTHEW BALSAMAN

ENGINEER

 Kimley-Horn
and Associates, Inc.
5750 GENESIS COURT
FRISCO, TEXAS 75034
PH. (972) 335-3580
CONTACT: TREY BRASWELL, P.E.
FIRM NO. F-928

SURVEYOR

 Kimley-Horn
and Associates, Inc.
12750 MERIT DRIVE
DALLAS, TEXAS 75251
SUITE 1000
PH. (972) 770-1300
CONTACT: DANA BROWN, R.P.L.S.
FIRM NO. F-928

TOWN OF ADDISON PROJECT #: 2013-01
JUNE 14, 2013

STOP!
CALL BEFORE YOU DIG
DIG TESS
1-800-DIG-TESS
(at least 72 hours prior to digging)

RECORD DRAWINGS
(October 2013)
Information Provided By:
BOB MOORE
CONSTRUCTION

