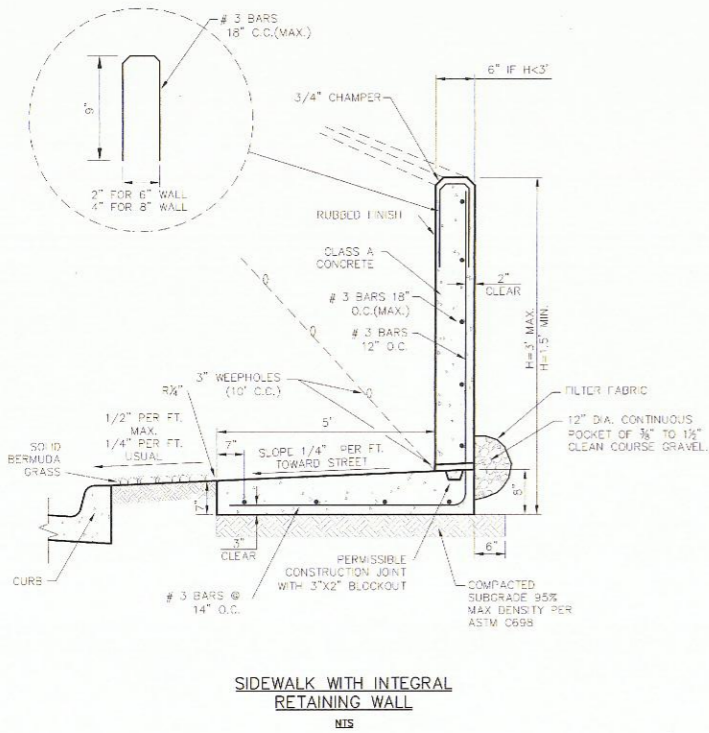


NOTE:  
PROVIDE VERTICAL EXPANSION IN WALL  
AT 25' MAX. SPACING.



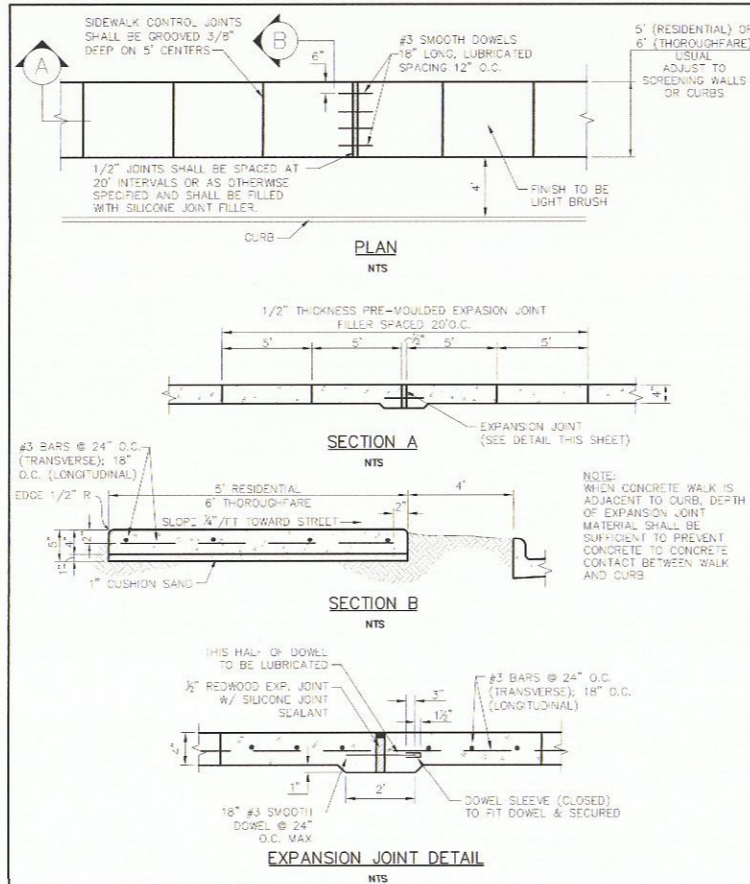
SIDEWALK WITH INTEGRAL  
RETAINING WALL  
NTS

Addison!  
PUBLIC WORKS DEPARTMENT

SIDEWALK WITH INTEGRAL  
RETAINING WALL

STANDARD CONSTRUCTION DETAILS  
PAVING

DATE: AUGUST 1, 2010 REV. DATE: SHEET: SD-P33



EXPANSION JOINT DETAIL  
NTS

Addison!  
PUBLIC WORKS DEPARTMENT

CONCRETE SIDEWALK

STANDARD CONSTRUCTION DETAILS  
PAVING

DATE: AUGUST 1, 2010 REV. DATE: SHEET: SD-P26

GENERAL NOTES FOR PEDESTRIAN FACILITIES

1. ALL SLOPES ARE MAXIMUM ALLOWABLE. THE LEAST POSSIBLE SLOPE THAT WILL STILL DRAIN PROPERLY SHOULD BE USED. ADJUST CURB RAMP LENGTH OR GRADE OF APPROACH SIDEWALKS AS DIRECTED.
2. LANDINGS SHALL BE 5'x5' MINIMUM WITH A MAXIMUM 2% SLOPE IN ANY DIRECTION.
3. MANEUVERING SPACE AT THE BOTTOM OF CURB RAMP SHALL BE A MINIMUM OF 4'x4' WHOLLY CONTAINED WITHIN THE CROSSWALK AND WHOLLY OUTSIDE THE PARALLEL VEHICULAR TRAVEL PATH.
4. MAXIMUM ALLOWABLE CROSS SLOPE ON SIDEWALK AND CURB RAMP SURFACES IS 2%.
5. CURB RAMP WITH RETURNED CURBS MAY BE USED ONLY WHERE PEDESTRIANS WOULD NOT NORMALLY WALK ACROSS THE RAMP. EITHER BECAUSE THE ADJACENT SURFACE IS PLANTING OR OTHER NON-WALKING SURFACE OR BECAUSE THE SIDE APPROACH IS SUBSTANTIALLY OBSTRUCTED. OTHERWISE, PROVIDE FLARED SIDES.
6. ADDITIONAL INFORMATION ON CURB RAMP LOCATION, DESIGN, LIGHT REFLECTIVE VALUE AND TEXTURE MAY BE FOUND IN THE CURRENT EDITION OF THE TEXAS ACCESSIBILITY STANDARDS (TAS) AND 16 TAC §68.102.
7. CURB RAMP SHALL BE ALIGNED WITH THEORETICAL CROSSWALKS, OR AS DIRECTED BY THE TOWN ENGINEER.
8. HANDRAILS ARE NOT REQUIRED ON CURB RAMP. PROVIDE CURB RAMP WHEREVER ON ACCESSIBLE ROUTE CROSSES (PENETRATES) A CURB.
9. FLARE SLOPE SHALL NOT EXCEED 10% MEASURED ALONG CURB LINE.
10. BARRIER FREE RAMPS SHALL BE CONSTRUCTED IN ACCORDANCE WITH THE CURRENT EDITION OF THE TEXAS ACCESSIBILITY STANDARDS (TAS).
11. ALL BARRIER FREE RAMPS MUST PASS AN INDEPENDENT INSPECTION. A LETTER OF COMPLIANCE ACCEPTANCE IS REQUIRED PRIOR TO FINAL ACCEPTANCE BY THE TOWN OF ADDISON.
12. STREETS ON STEEP GRADE WILL REQUIRE LONGER TRANSITION ON UPGRADE SIDE.
13. MAXIMUM SLOPE ON RAMP PORTION SHALL NOT EXCEED 1" PER FOOT AT ANY LOCATION. VERTICAL DISTANCE BETWEEN STREET AND RAMP SHALL NOT EXCEED 4".

GENERAL NOTES FOR DETECTABLE WARNINGS

1. CURB RAMPS MUST CONTAIN A DETECTABLE WARNING SURFACE THAT CONSIST OF RAISED TRUNCATED DOMES COMPLYING WITH SECTION 4.29 OF THE TEXAS ACCESSIBILITY STANDARDS (TAS). THE SURFACE MUST CONTRAST VISUALLY WITH THE ADJOINING SURFACES, INCLUDING SIDE FLARES. FURNISH DARK RED COLORED DETECTABLE WARNING SURFACE ADJACENT TO UNCOLORED CONCRETE AND CREAM COLORED DETECTABLE WARNING SURFACE ADJACENT TO DARK RED COLORED BRICK PAVERS.
2. DETECTABLE WARNING SURFACES MUST BE SLIP RESISTANT AND NOT ALLOW WATER TO ACCUMULATE.
3. ALIGN TRUNCATED DOMES IN THE DIRECTION OF PEDESTRIAN TRAVEL WHEN ENTERING THE STREET.
4. DETECTABLE WARNING SURFACES SHALL BE A MINIMUM OF 24" IN DEPTH IN THE DIRECTION OF PEDESTRIAN TRAVEL, AND EXTEND THE FULL WIDTH OF THE CURB RAMP OR LANDING WHERE THE PEDESTRIAN ACCESS ROUTE ENTERS THE STREET.
5. DETECTABLE WARNING SURFACES SHALL BE LOCATED SO THAT THE EDGE NEAREST THE CURB LINE IS A MINIMUM OF 6" AND A MAXIMUM OF 6" FROM THE EXTENSION OF THE FACE OF CURB AND SHALL BE AN INTEGRAL PART OF THE WALKING SURFACE. DETECTABLE WARNING SURFACES MAY BE CURVED ALONG THE CORNER RADIUS.

GENERAL NOTES FOR DETECTABLE WARNING PAVER UNITS

1. DETECTABLE WARNING PAVER UNITS SHALL MEET OR EXCEED ALL REQUIREMENTS OF ASTM C-936, C-33, AND BE LAID IN A TWO BY TWO UNIT BASKET WEAVE PATTERN OR AS DIRECTED.
2. LAY FULL-SIZE UNITS FIRST FOLLOWED BY CLOSURE UNITS CONSISTING OF AT LEAST 25 PERCENT OF A FULL UNIT. CUT DETECTABLE WARNING PAVER UNITS USING A POWER SAW.

Addison!  
PUBLIC WORKS DEPARTMENT

PEDESTRIAN FACILITIES  
GENERAL NOTES

STANDARD CONSTRUCTION DETAILS  
PAVING

DATE: AUGUST 1, 2010 REV. DATE: SHEET: SD-P37

2267 MORNING MESA  
HENDERSON, NV 89052  
702.551.2005  
info@valley-cdg.com  
TBPE Firm No. 14469



Matthew Loser



12/10/14

Revision Schedule

Rev	Date	Description
10	DEC 14	PLAN CHECK COMMENTS



PROJECT NAME:  
**LAZY DOG RESTAURANT & BAR**

PROJECT ADDRESS:  
VILLAGE ON THE PARKWAY  
5100 BELT LINE ROAD, SUITE 500  
ADDISON, TX 75254

BUILDING DEPT. 2nd SUBMITTAL / BID SET  
PROJECT #: C-LDR-004  
ISSUE DATE: 10-22-2014

SHEET TITLE:  
**GRADING  
DETAILS**

SHEET NUMBER:  
**C2.1**