

LOT CORNER COORDINATES

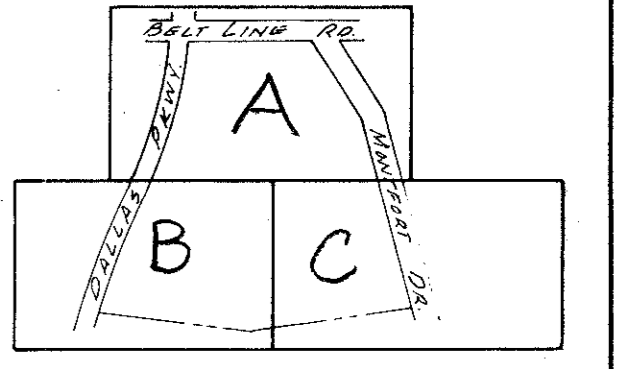
#	Y	X
49	1416.196	2697.396
50	1416.196	2399.684
52	1416.196	2272.684
56	1416.196	2008.133
59	1543.196	2399.684
60	1747.419	2399.684
61	1543.196	2583.245
62	1385.925	2724.604

Prestonwood Pond II
411Q 1960 Sh. 92, 93

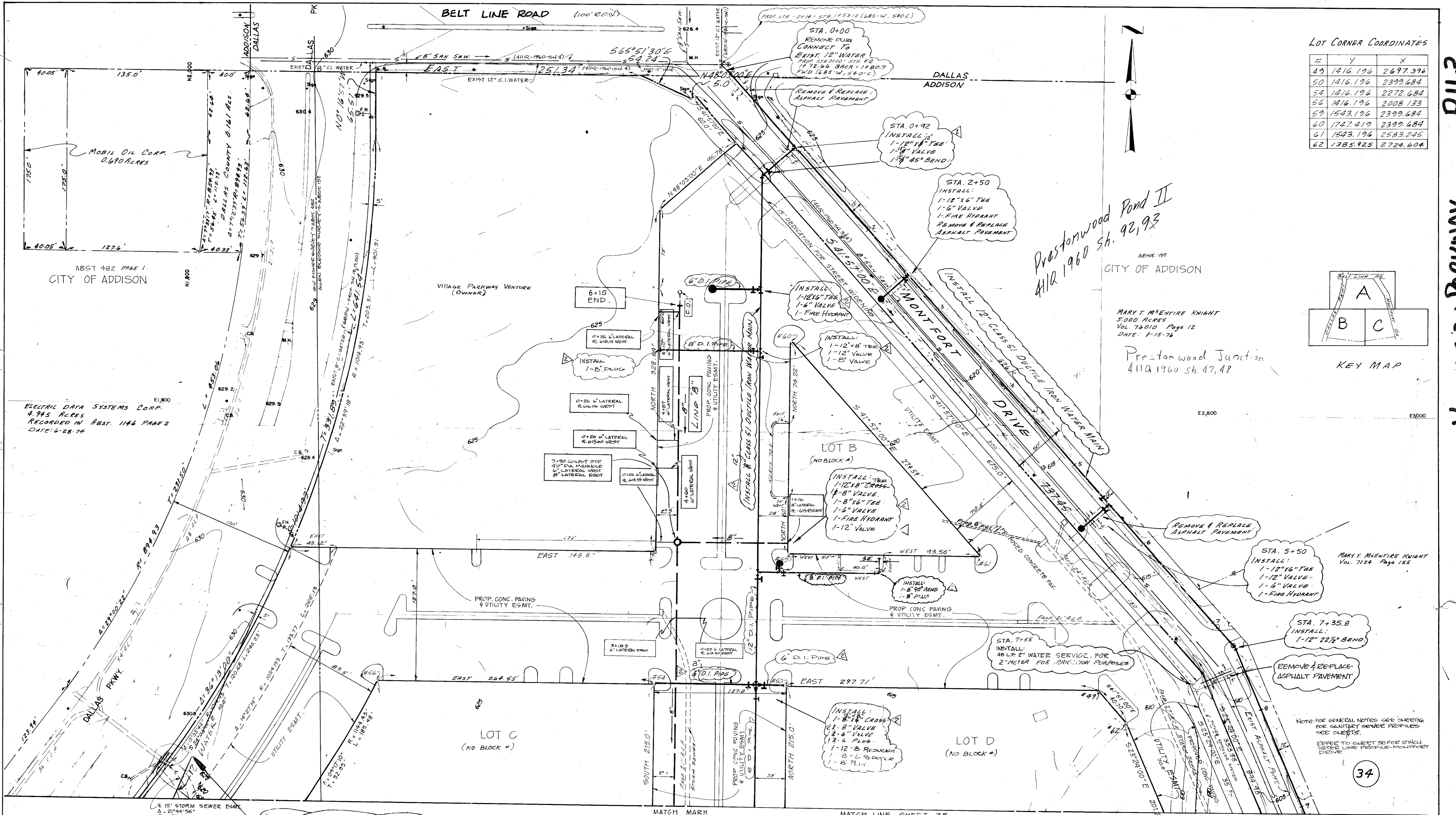
CITY OF ADDISON

MARY T. McENTIRE KNIGHT
5.000 ACRES
VOL. 74010 PAGE 12
DATE: 1-15-76

Prestonwood Junction
411A 1960 Sh. 47, 48



KEY MAP



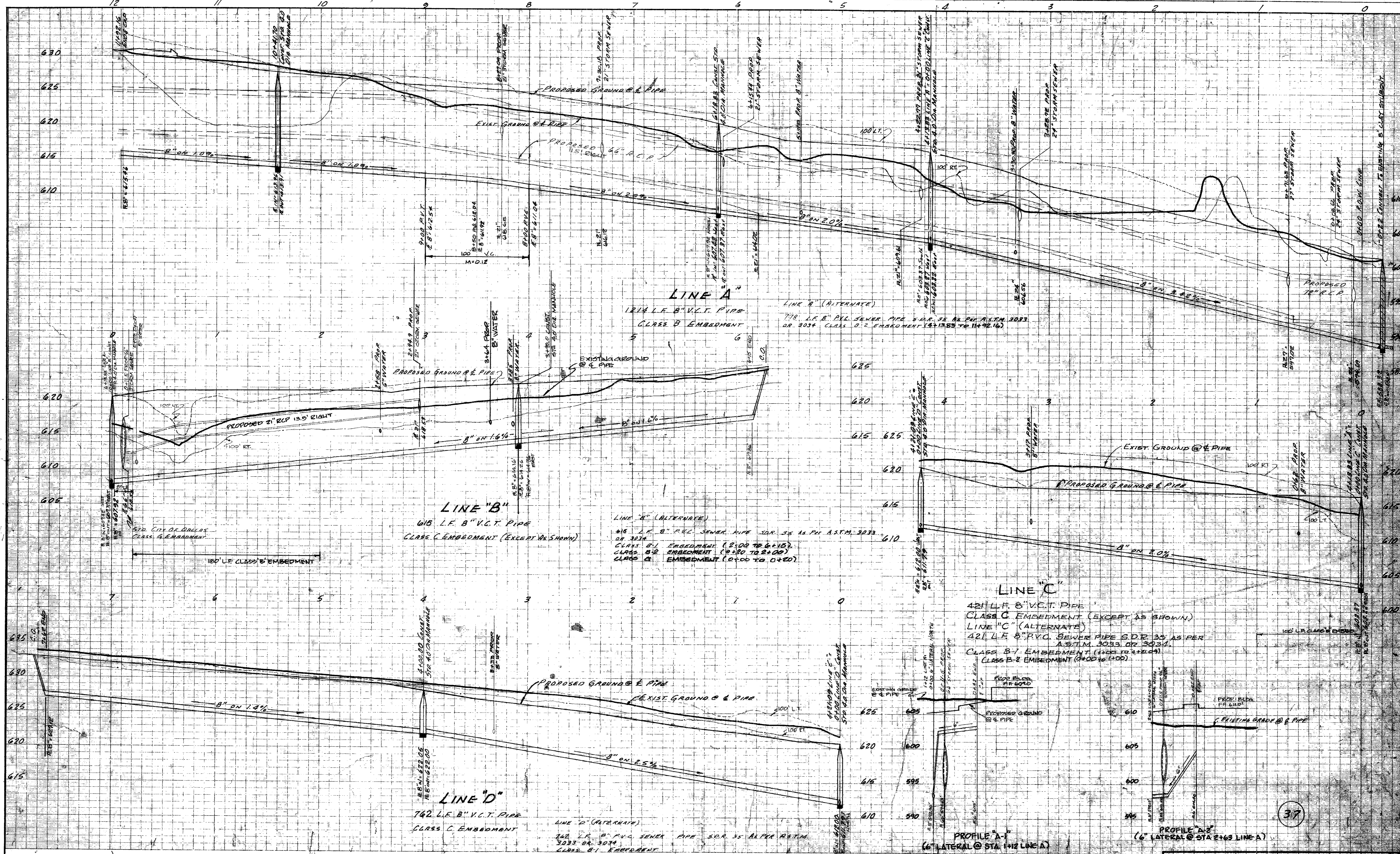
FOR WATER RELOCATION
SEE 411Q-1909A SH. 15

BENCHMARK: STANDARD WATER DEPT. BENCHMARK
CENTER INLET NORTHWEST CORNER
BELT LINE ROAD AND DALLAS PKWY.
ELEV. 636.08

LOCATION: VILLAGE ON THE PARKWAY (CHANGE ORDER NO. 2)
DESIGNED: A. H. HALFF, INC. ENGINEERS
DATE: 10-17-78
R.O.V. APPROVED: [Signature]
ENGINEER: [Signature] 1-19-79
CONTRACT NO. 78-261, 78-262 STIMMONS SEPT. 25, 1978

LOCATION: VILLAGE ON THE PARKWAY - PHASE I
DESIGNED: ALBERT H. HALFF ASSOCIATES, INC. ENGINEERS
DATE: 10-17-78
R.O.V. APPROVED: [Signature]
ENGINEER: [Signature] 10-17-78
CONTRACT NO. 78-261, 78-262 STIMMONS SEPT. 25, 1978

WATER & SANITARY SEWER PLANS						
VILLAGE ON THE PARKWAY						
VILLAGE PARKWAY VENTURE						
ALBERT H. HALFF ASSOCIATES, INC. ENGINEERS						
CITY OF ADDISON, TEXAS						
DESIGN	DRAWN	DATE	SCALE	NOTES	FILE	NO.
AMH	T.P.	MAY 1978	1"=40'	6143	411Q	1960

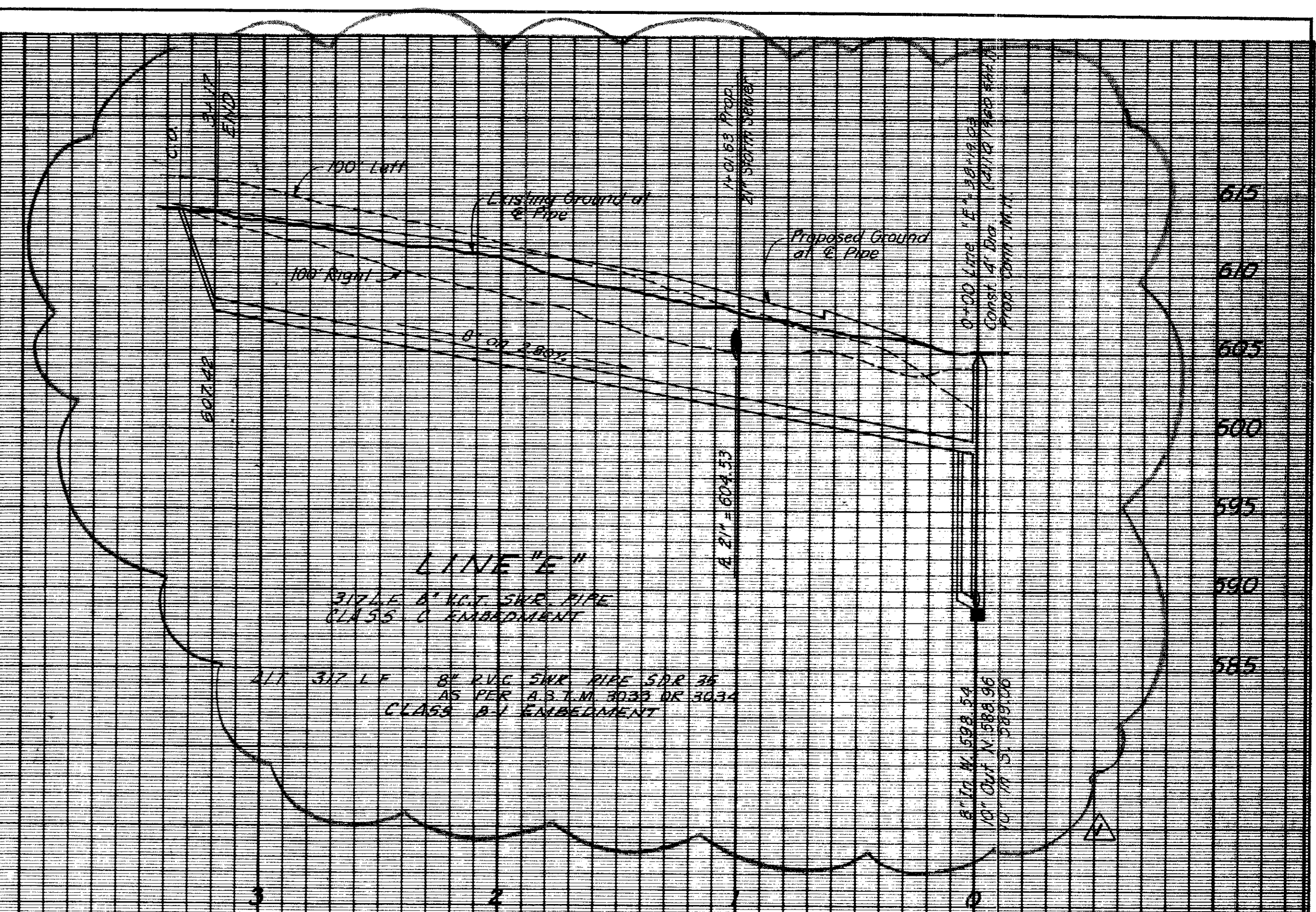


LOCATION: VILLAGE ON THE PARKWAY PHASE I
 DESIGNED BY: [Signature] DATE: July 21/78
 ALBERT H. HALPER ASSOCIATES INC. ENGINEERS
 E.O.W. APPROVED DATE: 10-17-78
 ENGINEER OF DESIGN: DALLAS WATER UTILITIES DEPT.
 CONTRACT NO. 78-2017-20-0028 - Skimston Sept 25, 1978

BENCHMARK: STANDARD WATER DEPT. BENCHMARK
 CENTER INLET NORTHWEST CORNER
 BELTLINE ROAD AND DALLAS PKWY.
 ELEV. 632.08

SANITARY SEWER PROFILE					
VILLAGE ON THE PARKWAY					
VILLAGE PARKWAY VENTURE					
ALBERT H. HALPER ASSOCIATES INC. ENGINEERS					
DALLAS FRANCHISE					
DESIGN	DRAWN	DATE	SCALE	NOTES	FILE
REC'D	T.P.	MAY 1978	1"=60'	6143	4710
					1980

37

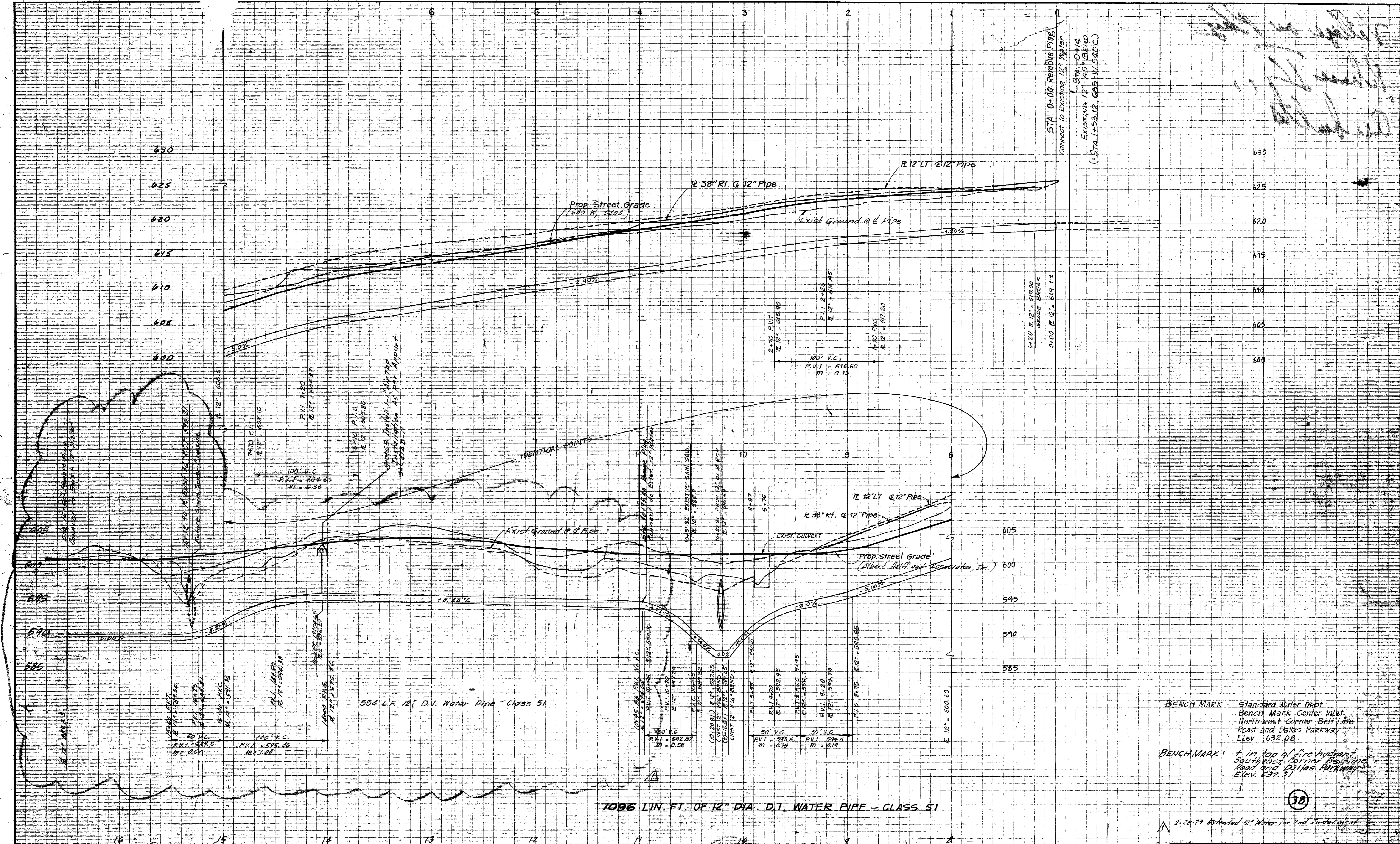


LOCATION: Village on the Parkway, SECOND INSTALLMENT
 DESIGNED: *Michael G. ...* DATE: 3-15-79
 ALBERT H. HALFF ASSOCIATES INC. - ENGINEERS
 R.O.W. APPROVED: *Michael G. ...* DATE: 4-25-79
 ENGINEER OF DESIGN - DALLAS WATER UTILITIES DEPT.
 CONTRACT No. 79-239P, 79-240P - STIMSON - DATE: April 19, 1979
 Δ Added line "E" for second installment 2-28-79

BENCHMARK: STANDARD WATER DEPT. BENCHMARK
 CENTER INLET NORTHWEST CORNER
 BELTLINE ROAD AND DALLAS PKWY.
 ELEV. 632.08
 BENCHMARK: + IN TOP OF FIRE HYDRANT
 SOUTHEAST CORNER BELTLINE
 RD. AND DALLAS PKWY.
 ELEV. 632.31

SANITARY SEWER PROFILE					
VILLAGE ON THE PARKWAY					
VILLAGE PARKWAY VENTURE					
ALBERT H. HALFF ASSOCIATES, INC. - ENGINEERS					
CITY OF ADDISON, TEXAS					
DESIGN	DRAWN	DATE	SCALE	NOTES	FILE NO.
A.H.H.		FEB. 79	H. 1" = 40' V. 1" = 8'	6143 Z	411 Q 1960

37A



Handwritten notes:
 1. 12" Class 51 D.I. Water Pipe - Class 51
 2. 20' 7" Extended 12" Water for 2nd Installation

BENCH MARK: Standard Water Dept.
 Bench Mark Center Inlet
 Northwest Corner Belt Line
 Road and Dallas Parkway
 Elev. 632.08

BENCH MARK: 4 in. top of fire hydrant
 Southeast Corner Bell Line
 Road and Dallas Parkway
 Elev. 632.31

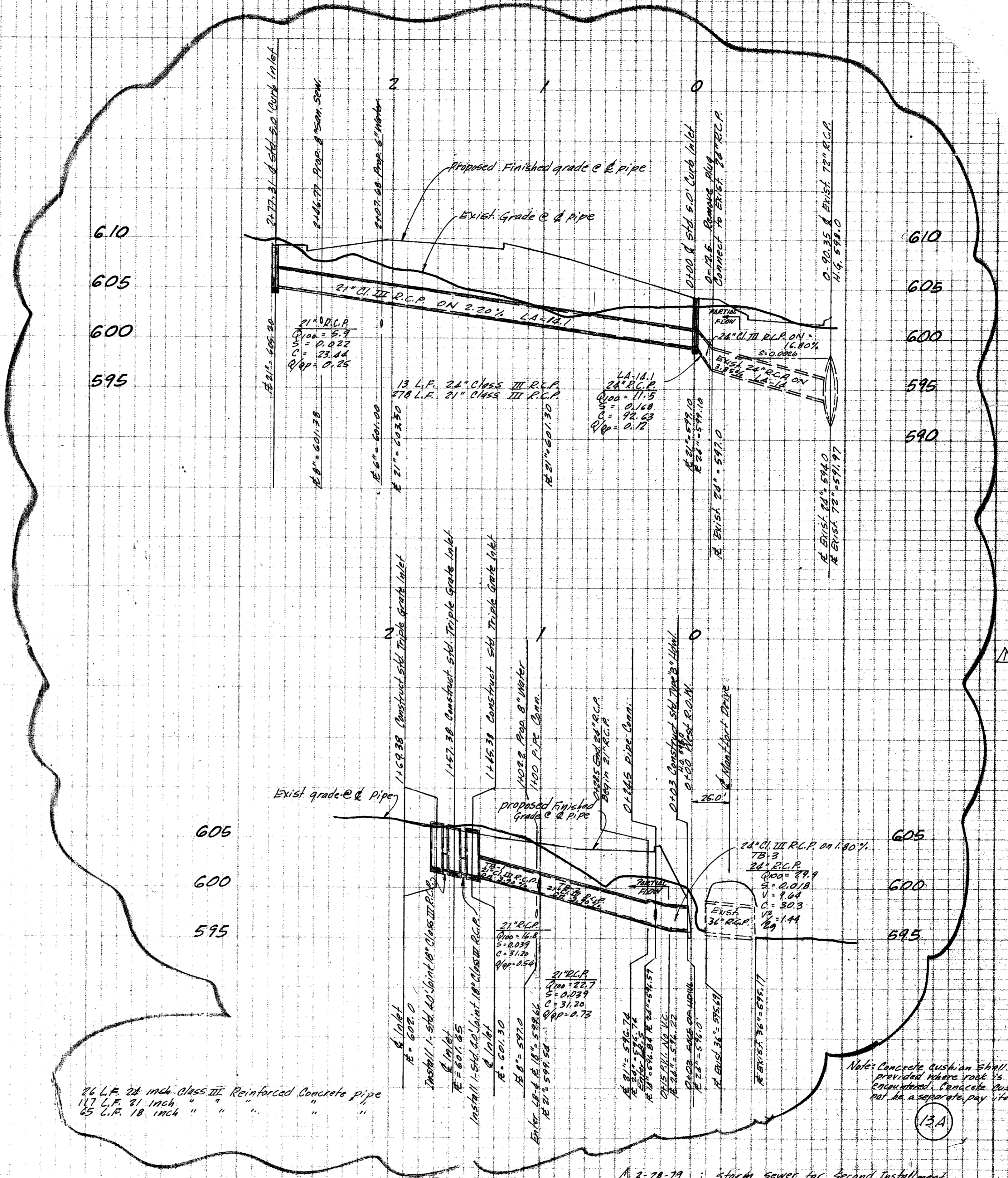
1096 LIN. FT. OF 12" DIA. D.I. WATER PIPE - CLASS 51

LOCATION: VILLAGE ON THE PARKWAY 2ND INST.
 DESIGNED: *Michael S. ...* DATE: 3-15-79
 ALBERT H. HALFF ASSOCIATES INC. ~ ENGINEERS
 R.O.W. APPROVED DATE:
Albert Halff 4-25-79
 ENGINEER OF DESIGN ~ DALLAS WATER UTILITIES DEPT.
 CONTRACT NO. 79-239 P, 79-240 P ~ Stinson April 19, 1979

LOCATION: VILLAGE ON THE PARKWAY PHASE I
 DESIGNED: *Albert Halff* DATE: July 21, 1978
 ALBERT H. HALFF ASSOCIATES INC. ~ ENGINEERS
 R.O.W. APPROVED DATE:
Albert Halff 10-17-78
 ENGINEER OF DESIGN ~ DALLAS WATER UTILITIES DEPT.
 CONTRACT NO. 78-261 P, 78-262 P ~ Stinson Sept. 25, 1978

12" CLASS 51 D.I. WATER MAIN						
MONTFORT DRIVE						
VILLAGE ON THE PARKWAY						
ALBERT H. HALFF AND ASSOCIATES - ENGINEERS						
CITY OF DALLAS, TEXAS						
DESIGN	DRAWN	DATE	SCALE	NOTES	FILE	NO.
AHH	T.N.	JUN. 78	H 1" = 40' V 1" = 6'	G143	411A	1960

38



26 L.F. 24 inch Class III Reinforced Concrete pipe
 117 L.F. 21 inch " " " "
 65 L.F. 18 inch " " " "

Note: Concrete cushion shall be provided where pipe is supported. Concrete cushion not to be a separate pay item.

13A

2-28-79 ; storm sewer for second installment

BENCHMARK: Standard Water Dept.
 Bench Mark Center Inlet
 North West Corner Bellline
 Rd. and Dallas Pkwy.
 ELEV. 532.08

STORM SEWER PROFILES
VILLAGE ON THE PARKWAY - 2ND INSTALL.
VILLAGE PARKWAY VENTURE
 ALBERT H. HALFF ASSOCIATES, INC. ENGR.
 CITY OF ADDISON, TEXAS

DESIGN	DRAWN	DATE	SCALE	NOTES	FILE	NO.
M.K.K.	C.M.S.	FEB 79	1" = 40'	61433		