

Change Order #13 6-7-79  
 Lengthened 2" Electrical Conduit sleeves  
 to extend 6' past N. R. Lot E.

Change Order #14 8-2-79  
 Added 1" Electrical Conduits  
 Change Order #15 10-9-79 Added  
 1" ELEC, 2" Tr. & 4" Tr. Lots H & J

Note: All Curbs Shall Be Standard  
 6 inch concrete integral curb  
 Unless otherwise noted.

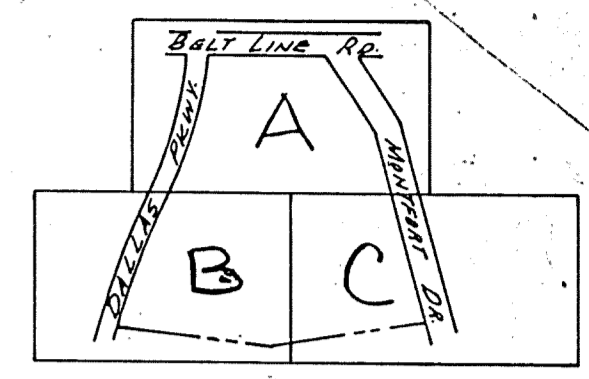
Standard Reinforced Concrete  
 Pavement w/ Integral Curb.  
 Refer to Sheet 14 for special  
 Paving Details.

2-28-79 Added Horizontal Layout  
 and paving plan for second installment

Change Order #5 2-16-79 SHOWS REVISED  
 ENTRANCE NORTH OF LOT E, ALSO SHOWS DE-  
 LATION OF AN ISLAND SOUTH OF LOT E.

CHANGE ORDER #6 3-12-79 SHOWS THE  
 ADDITION OF AN ISLAND ON THE SOUTH  
 SIDE OF LOT C

Note: Curve numbers refer to  
 CURVE DATA for curves on  
 this sheet only. Do not use  
 curve data shown in this  
 table for sheets 14 or 16.



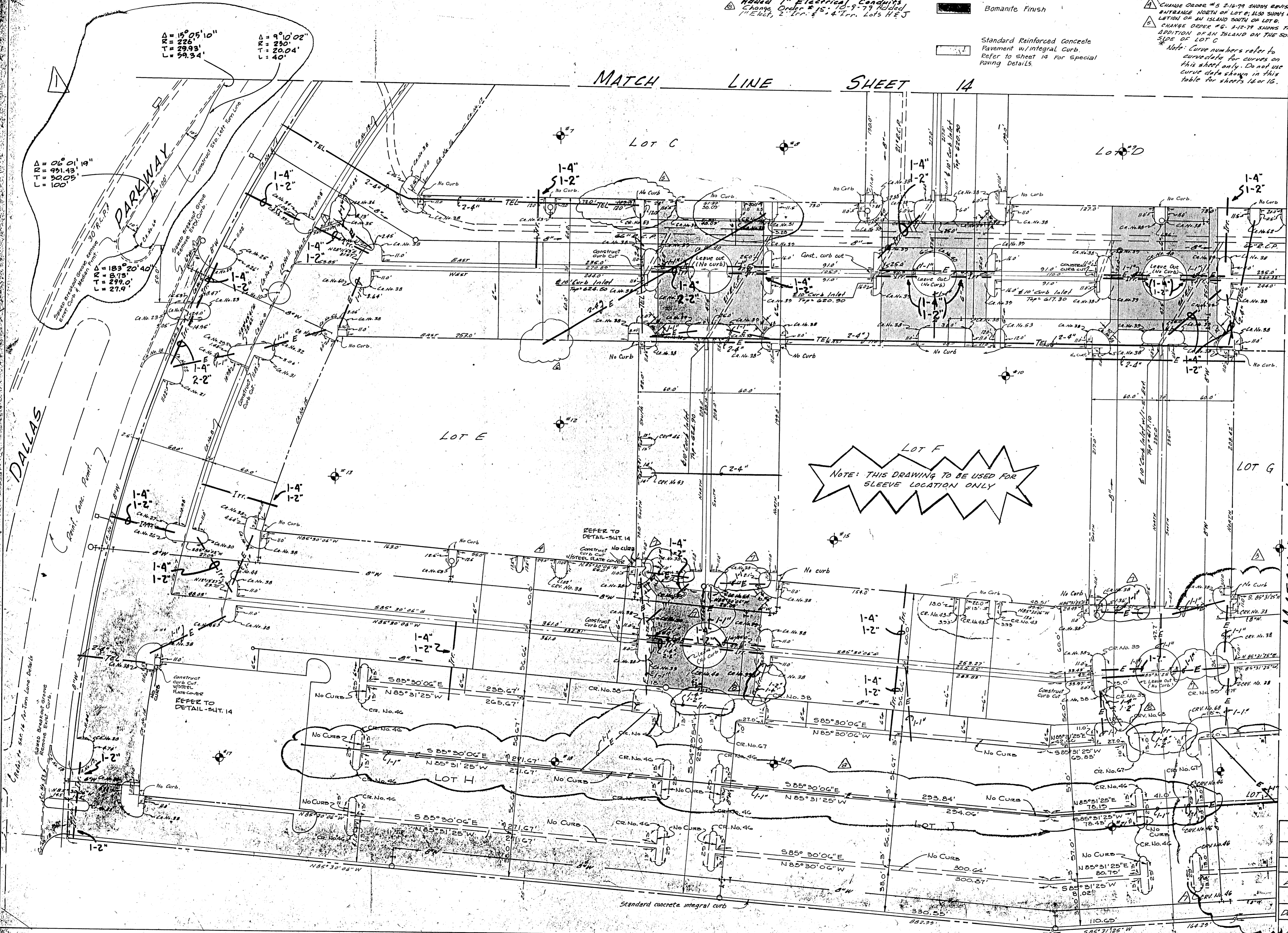
KEY MAP

MATCH LINE SHEET 14

CURVE DATA

CR. No.	Δ	R	T	L
1	02°46'19"	1256.93	30.39	20.77
2	17°21'22"	1256.93	191.85	380.75
3	01°32'05"	1256.93	16.83	33.66
4	00°44'28"	1256.93	8.17	16.34
5	01°36'51"	1256.93	17.71	35.41
6	10°35'23"	1256.93	116.49	233.31
7	03°18'41"	1190.93	24.03	48.04
8	09°01'32"	1190.93	94.00	187.60
9	01°56'47"	1190.93	24.23	48.46
10	02°54'20"	1190.93	9.50	19.00
11	00°56'30"	1190.93	9.70	19.47
12	01°34'38"	1190.93	16.37	32.74
13	07°19'11"	1190.93	76.18	152.35
14	04°47'58"	1194.43	50.05	100.04
15	08°44'37"	1127.43	86.19	172.05
16	02°54'20"	1127.43	28.62	57.11
17	09°02'01"	1144.43	94.41	188.44
18		20.2	MATCH EXISTING	
19	89°10'45"	18.0	17.74	28.02
20	89°33'01"	5.0	4.96	7.82
21	89°46'43"	5.0	4.98	7.84
22	89°10'45"	18.0	17.74	28.02
23	100°00'00"	7.0	7.0	11.0
24	63°52'28"	16.0	9.97	17.84
25	89°46'10"	5.0	4.98	7.83
26	99°47'06"	7.0	8.31	12.10
27	90°14'15"	5.0	5.02	7.80
28	90°14'15"	5.0	5.02	7.80
29	61°15'50"	7.0	4.15	7.49
30	169°39'37"	5.0	55.26	14.81
31	89°36'25"	5.0	4.97	7.82
32	109°28'34"	7.0	12.0	14.60
33	139°03'10"	10.0	26.78	24.22
34	90°14'16"	5.0	5.02	7.87
35	30°34'58"	7.0	2.52	4.84
36	89°46'23"	5.0	4.98	7.83
37	360°00'00"	9.5		59.62
38	90°00'00"	5.0	5.0	7.85
39	90°00'00"	7.0	7.0	11.00
40	360°00'00"	19.5		122.62
41	85°39'54"	16.0	14.83	23.02
42	91°14'06"	16.0	14.35	26.48
43	90°00'00"	3.0	3.0	4.71
44	82°14'37"	2.5	2.18	3.59
45	91°43'33"	6.5	7.34	11.09
46	180°00'00"	3.0		9.42
47	90°28'36"	16.0	17.30	26.38
48	90°00'00"	16.0	16.0	25.13
49	85°31'25"	2.0	1.85	2.99
50	90°28'36"	5.0	5.41	8.25
51	90°00'00"	4.5	4.5	7.07
52	85°31'25"	16.0	14.80	23.88
53	180°00'00"	4.0		12.67
54	90°28'36"	7.0	7.57	11.65
55	85°30'46"	7.0	4.47	12.45
56	64°54'16"	16.0	10.17	18.13
57	102°04'38"	16.0	19.45	28.30
58	180°00'00"	3.5		11.0
59	94°29'58"	16.0	17.31	26.39
60	180°11'03"	10.0	17.70	26.63
61	61°48'07"	10.0	5.99	10.79
62	180°00'00"	4.5		14.14
63	122°27'55"	16.0	29.14	34.20
64		8" E	MATCH EXISTING	
65	180°00'00"	2.5		7.85
66	85°30'06"	16.0	14.79	23.88

NOTE: THIS DRAWING TO BE USED FOR  
 SLEEVE LOCATION ONLY



MATCH LINE SHEET 16

7/26/78 Added TURN LANE CURVE DATA  
 NOTE: ALL DIMENSIONS ARE  
 TO BACK OF CURB

10/30/78 REVISED SERVICE DRIVE DIMENSIONS  
 SOUTH SIDE OF C&F  
 Bench Mark: Standard water dept. bench mark center  
 inlet northwest corner Bolt Line End  
 and Dallas Hwy.  
 ELEV.: 632.08

Indicates Soil Boring

IRRIGATION, TELEPHONE & ELECTRICAL CONDUIT  
 SLEEVE PLAN

VILLAGE ON THE PARKWAY  
 VILLAGE PARKWAY VENTURE  
 Albert H. Wolff Associates, Inc. - Engineers  
 CITY OF ADDISON, TEXAS

DESIGN	DRAWN	DATE	SCALE	NOTES	FILE	NO.
A.M.H.	A.M.H.	April 79	1"=40'	6163		