

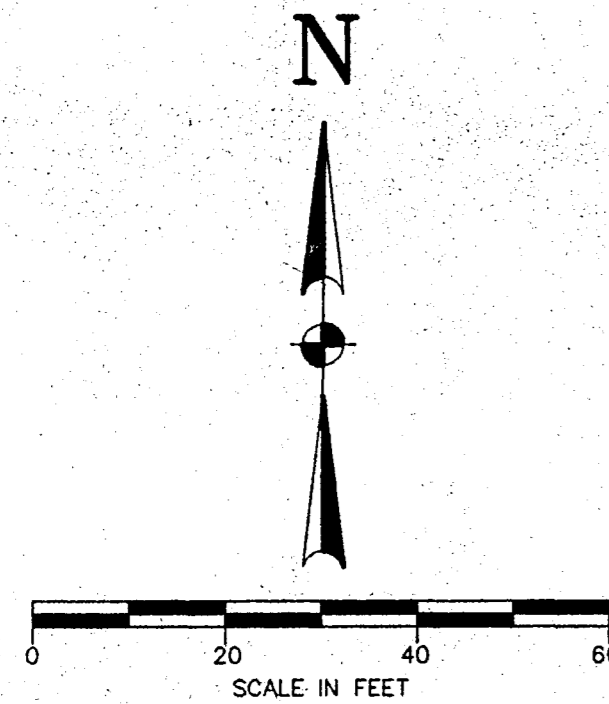
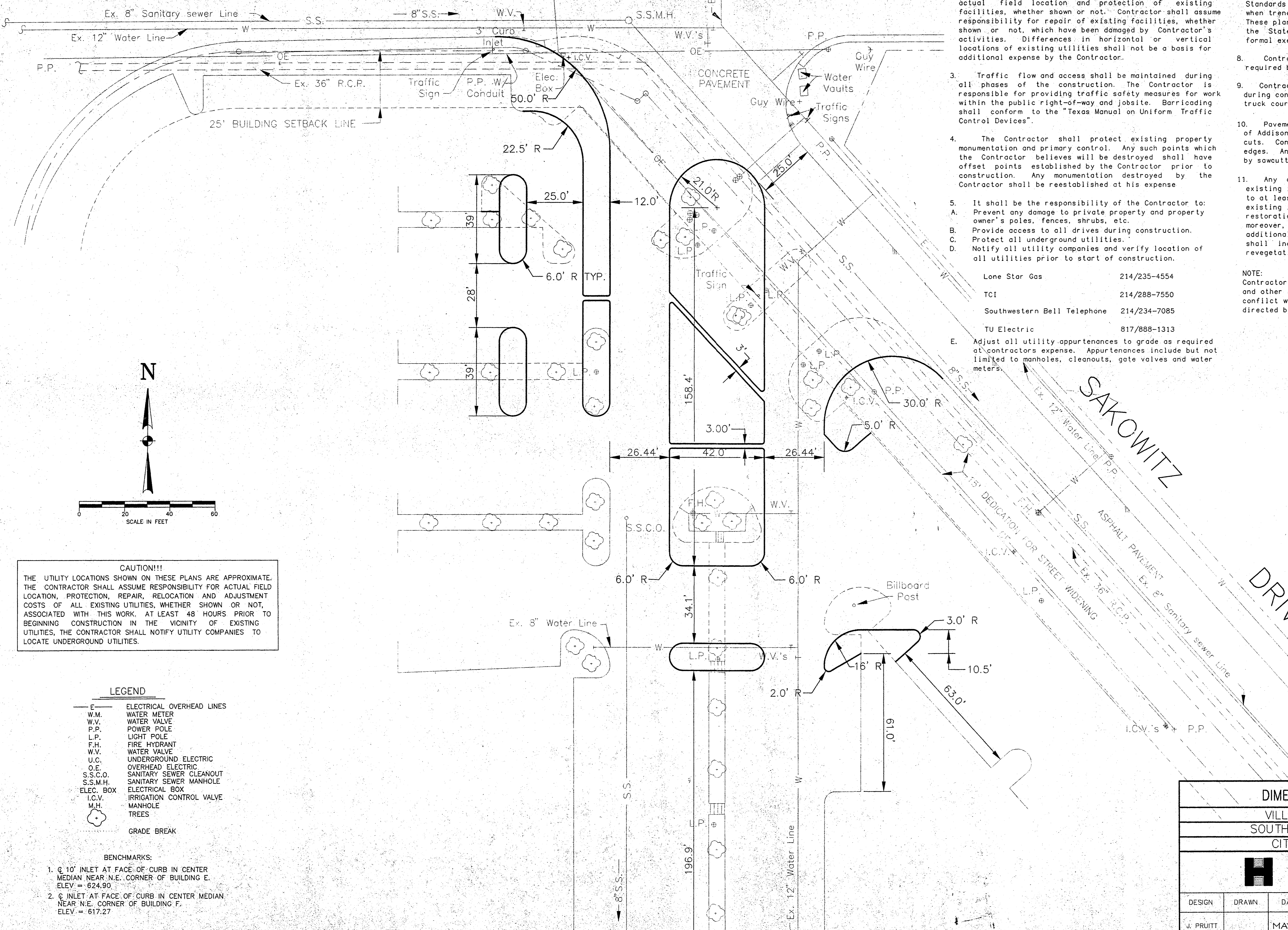
# BELT LINE ROAD

## GENERAL NOTES

- All site work shall be done in accordance with the Standard Specifications of the Town of Addison.
- Existing utilities shown are from available records. Locations shown are generally schematic in nature and may not accurately reflect the size and location of each particular utility. Some utility and irrigation lines may not be shown. Contractor shall assume responsibility for actual field location and protection of existing facilities, whether shown or not. Contractor shall assume responsibility for repair of existing facilities, whether shown or not, which have been damaged by Contractor's activities. Differences in horizontal or vertical locations of existing utilities shall not be a basis for additional expense by the Contractor.
- Traffic flow and access shall be maintained during all phases of the construction. The Contractor is responsible for providing traffic safety measures for work within the public right-of-way and jobsite. Barricading shall conform to the "Texas Manual on Uniform Traffic Control Devices".
- The Contractor shall protect existing property monumentation and primary control. Any such points which the Contractor believes will be destroyed shall have offset points established by the Contractor prior to construction. Any monumentation destroyed by the Contractor shall be reestablished at his expense.
  - A. Prevent any damage to private property and property owner's poles, fences, shrubs, etc.
  - B. Provide access to all drives during construction.
  - C. Protect all underground utilities.
  - D. Notify all utility companies and verify location of all utilities prior to start of construction.
  - E. Adjust all utility appurtenances to grade as required at contractor's expense. Appurtenances include but not limited to manholes, cleanouts, gate valves and water meters.
- The Contractor will abide by all applicable federal, state, and local laws governing excavation. Trench sideslopes shall meet Occupation Safety and Health Administration (OSHA) Standards that are in effect at the time of Bid Opening. Sheeting, shoring, and bracing will be required when sideslope standards are not met. The apparent low bidder will submit detailed plans and specifications for trench safety system that meet OSHA Standards that are in effect at the time of Bid Opening when trench excavation will be in excess of five (5) feet. These plans will be sealed by an Engineer registered by the State of Texas and submitted to the City prior to formal execution of the Contract.
- Contractor to lay out expansion and sawn joints as required by Owner.
- Contractor shall maintain drainage at all times during construction. Ponding of water in streets, drives, truck courts, trenches, etc. will not be allowed.
- Pavement removal and repair shall conform to the Town of Addison requirements. All sawcuts shall be full depth cuts. Contractor shall make efforts to protect concrete edges. Any large spalled or broken edges shall be removed by sawcutting pavement prior to replacement.
- Any damages that may occur to real property or existing improvements shall be restored by the Contractor to at least the same condition that the real property or existing improvements were in prior to the damages. This restoration shall be subject to the Owner's approval; moreover, this restoration shall not be a basis for additional compensation to the Contractor. Restoration shall include, but not be limited to, regrading, revegetation, replacing fences, replacing trees, etc.

NOTE:  
Contractor shall relocate all trees, lights and other above ground appurtenances which conflict with proposed improvements as directed by architect.

Lone Star Gas 214/235-4554  
TCI 214/288-7550  
Southwestern Bell Telephone 214/234-7085  
TU Electric 817/888-1313



**CAUTION!!!**  
THE UTILITY LOCATIONS SHOWN ON THESE PLANS ARE APPROXIMATE. THE CONTRACTOR SHALL ASSUME RESPONSIBILITY FOR ACTUAL FIELD LOCATION, PROTECTION, REPAIR, RELOCATION AND ADJUSTMENT COSTS OF ALL EXISTING UTILITIES, WHETHER SHOWN OR NOT, ASSOCIATED WITH THIS WORK. AT LEAST 48 HOURS PRIOR TO BEGINNING CONSTRUCTION IN THE VICINITY OF EXISTING UTILITIES, THE CONTRACTOR SHALL NOTIFY UTILITY COMPANIES TO LOCATE UNDERGROUND UTILITIES.

LEGEND	
—	ELECTRICAL OVERHEAD LINES
W.M.	WATER METER
W.V.	WATER VALVE
P.P.	POWER POLE
L.P.	LIGHT POLE
F.H.	FIRE HYDRANT
W.V.	WATER VALVE
U.C.	UNDERGROUND ELECTRIC
O.E.	OVERHEAD ELECTRIC
S.S.C.O.	SANITARY SEWER CLEANOUT
S.S.M.H.	SANITARY SEWER MANHOLE
ELEC. BOX	ELECTRICAL BOX
I.C.V.	IRRIGATION CONTROL VALVE
M.H.	MANHOLE
○	TREES
---	GRADE BREAK

### BENCHMARKS:

1. @ 10' INLET AT FACE OF CURB IN CENTER MEDIAN NEAR N.E. CORNER OF BUILDING E. ELEV. = 624.90
2. @ INLET AT FACE OF CURB IN CENTER MEDIAN NEAR N.E. CORNER OF BUILDING F. ELEV. = 617.27

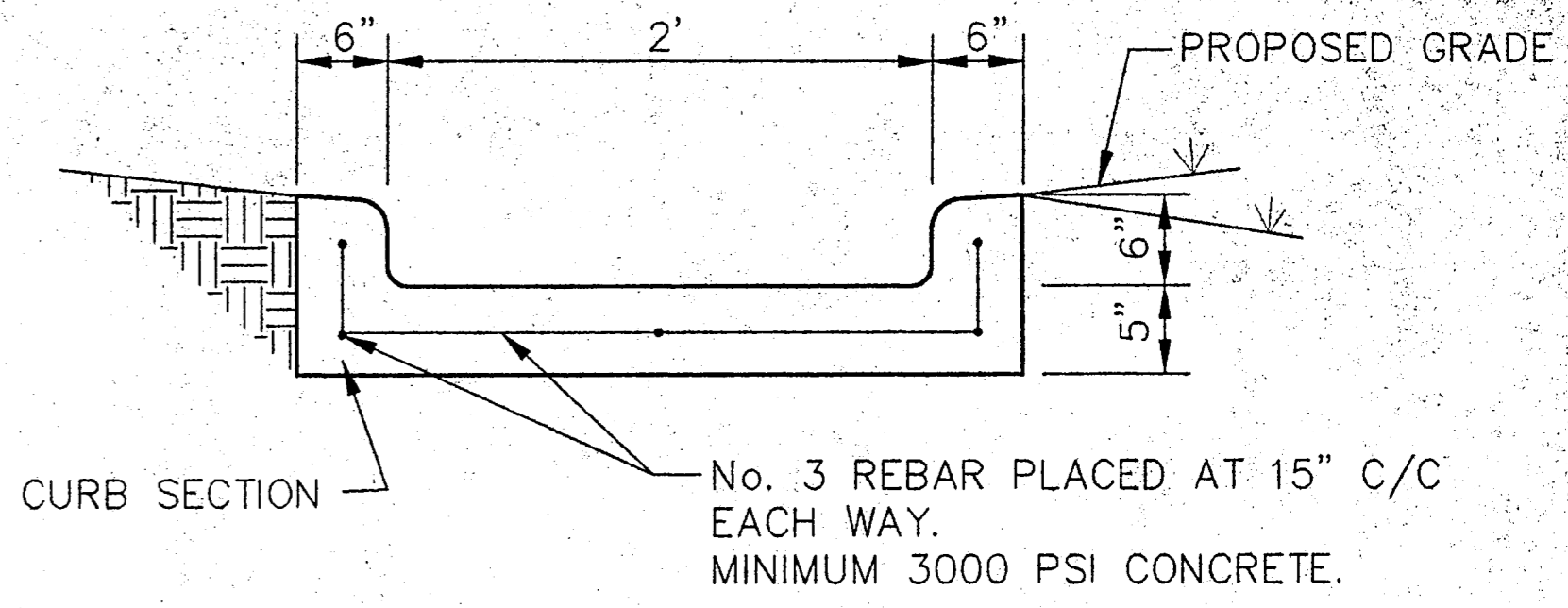
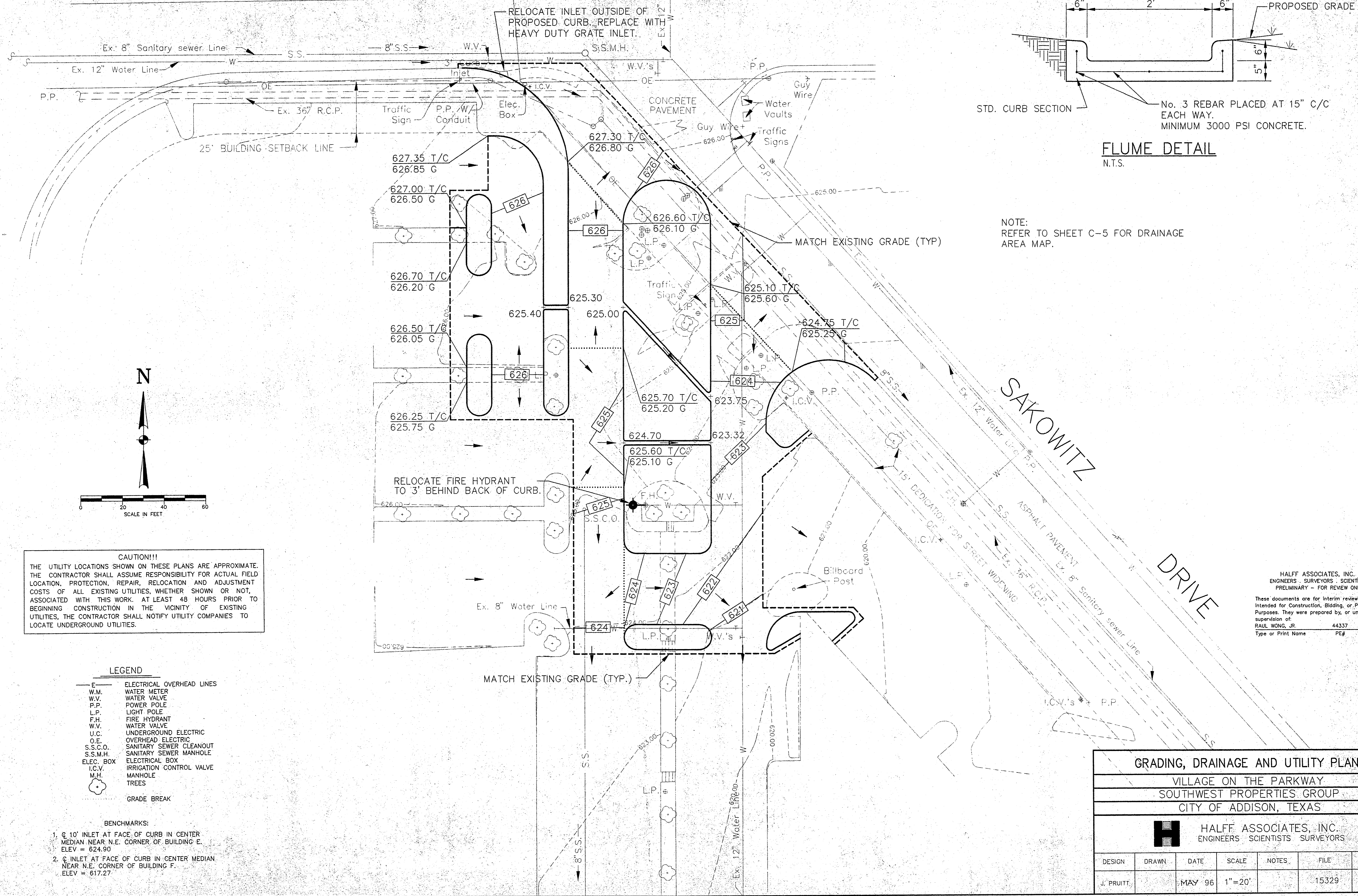
NOTE: ALL DIMENSIONS ARE TO BACK OF CURB UNLESS OTHERWISE NOTED.

HALFF ASSOCIATES, INC.  
ENGINEERS SURVEYORS SCIENTISTS  
PRELIMINARY - FOR REVIEW ONLY  
These documents are for interim review and not intended for Construction, Bidding, or Permit Purposes. They were prepared by, or under the supervision of:  
RAUL WONG, JR. 44337 05/24/96  
Type or Print Name PE# Date

DIMENSION CONTROL PLAN						
VILLAGE ON THE PARKWAY						
SOUTHWEST PROPERTIES GROUP						
CITY OF ADDISON, TEXAS						
HALFF ASSOCIATES, INC. ENGINEERS SCIENTISTS SURVEYORS						
DESIGN	DRAWN	DATE	SCALE	NOTES	FILE	NO.
J. PRUITT		MAY '96	1"=20'		15329	C-6

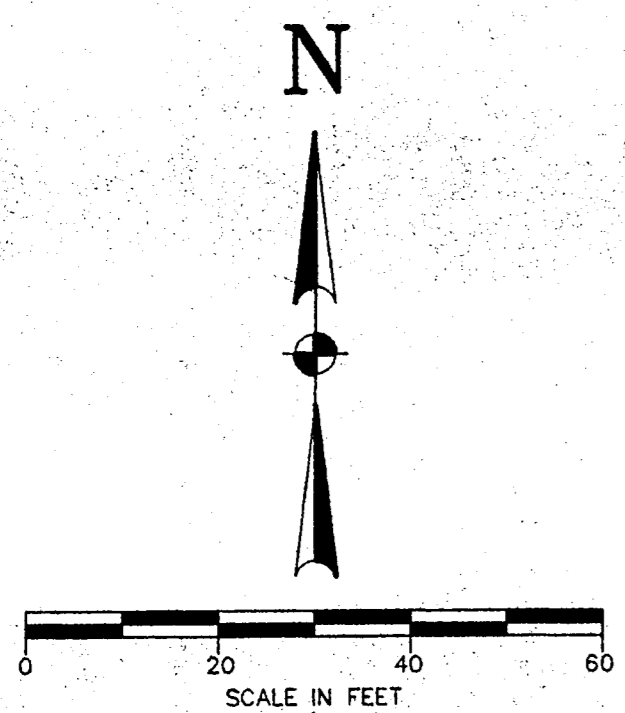


# BELT LINE ROAD



**FLUME DETAIL**  
N.T.S.

NOTE:  
REFER TO SHEET C-5 FOR DRAINAGE  
AREA MAP.



**CAUTION!!!**  
THE UTILITY LOCATIONS SHOWN ON THESE PLANS ARE APPROXIMATE. THE CONTRACTOR SHALL ASSUME RESPONSIBILITY FOR ACTUAL FIELD LOCATION, PROTECTION, REPAIR, RELOCATION AND ADJUSTMENT COSTS OF ALL EXISTING UTILITIES, WHETHER SHOWN OR NOT, ASSOCIATED WITH THIS WORK. AT LEAST 48 HOURS PRIOR TO BEGINNING CONSTRUCTION IN THE VICINITY OF EXISTING UTILITIES, THE CONTRACTOR SHALL NOTIFY UTILITY COMPANIES TO LOCATE UNDERGROUND UTILITIES.

- LEGEND**
- E — ELECTRICAL OVERHEAD LINES
  - W.M. — WATER METER
  - W.V. — WATER VALVE
  - P.P. — POWER POLE
  - L.P. — LIGHT POLE
  - F.H. — FIRE HYDRANT
  - W.V. — WATER VALVE
  - U.C. — UNDERGROUND ELECTRIC
  - O.E. — OVERHEAD ELECTRIC
  - S.S.C.O. — SANITARY SEWER CLEANOUT
  - S.S.M.H. — SANITARY SEWER MANHOLE
  - ELEC. BOX — ELECTRICAL BOX
  - I.C.V. — IRRIGATION CONTROL VALVE
  - M.H. — MANHOLE
  - ☉ — TREES
  - — GRADE BREAK

- BENCHMARKS:**
1. 10' INLET AT FACE OF CURB IN CENTER MEDIAN NEAR N.E. CORNER OF BUILDING E. ELEV = 624.90
  2. 10' INLET AT FACE OF CURB IN CENTER MEDIAN NEAR N.E. CORNER OF BUILDING F. ELEV = 617.27

HALFF ASSOCIATES, INC.  
ENGINEERS - SURVEYORS - SCIENTISTS  
PRELIMINARY - FOR REVIEW ONLY  
These documents are for interim review and not intended for construction, bidding, or permit purposes. They were prepared by, or under the supervision of:  
RAUL WONG, JR. 44337 05/24/96  
Type or Print Name PE# Date

<b>GRADING, DRAINAGE AND UTILITY PLAN</b>						
VILLAGE ON THE PARKWAY						
SOUTHWEST PROPERTIES GROUP						
CITY OF ADDISON, TEXAS						
		HALFF ASSOCIATES, INC. ENGINEERS - SCIENTISTS - SURVEYORS				
DESIGN	DRAWN	DATE	SCALE	NOTES	FILE	NO.
J. PRUITT		MAY '96	1"=20'		15329	C-7