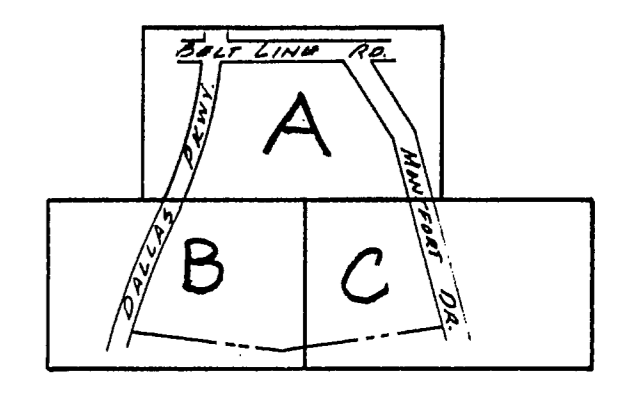


LOT CORNER COORDINATES

#	Y	X
49	1416.196	2697.396
50	1416.196	2399.684
54	1416.196	2272.684
56	1416.196	2008.133
59	1543.196	2399.684
60	1747.419	2399.684
61	1543.196	2583.245
62	1385.925	2722.604

Prestonwood Pond II
 AIR 1960 Sh. 92, 93
 CITY OF ADDISON



MARY T. MENTIRE KNIGHT
 5,000 ACRES
 VOL. 76010 PAGE 12
 DATE: 1-15-74

Prestonwood Junction
 411A 1960 Sh. 47, 48

MARY T. MENTIRE KNIGHT
 VOL. 7124 PAGE 155

Note: FOR GENERAL NOTES SEE SHEETS 6
 FOR SANITARY SEWER PROFILES
 SEE SHEET 7
 REFER TO SHEET 8 FOR EMBANKMENT
 AND FILLING MONITOR

34

FOR WATER RELOCATION
 SEE 411Q-1909 A SH. 15

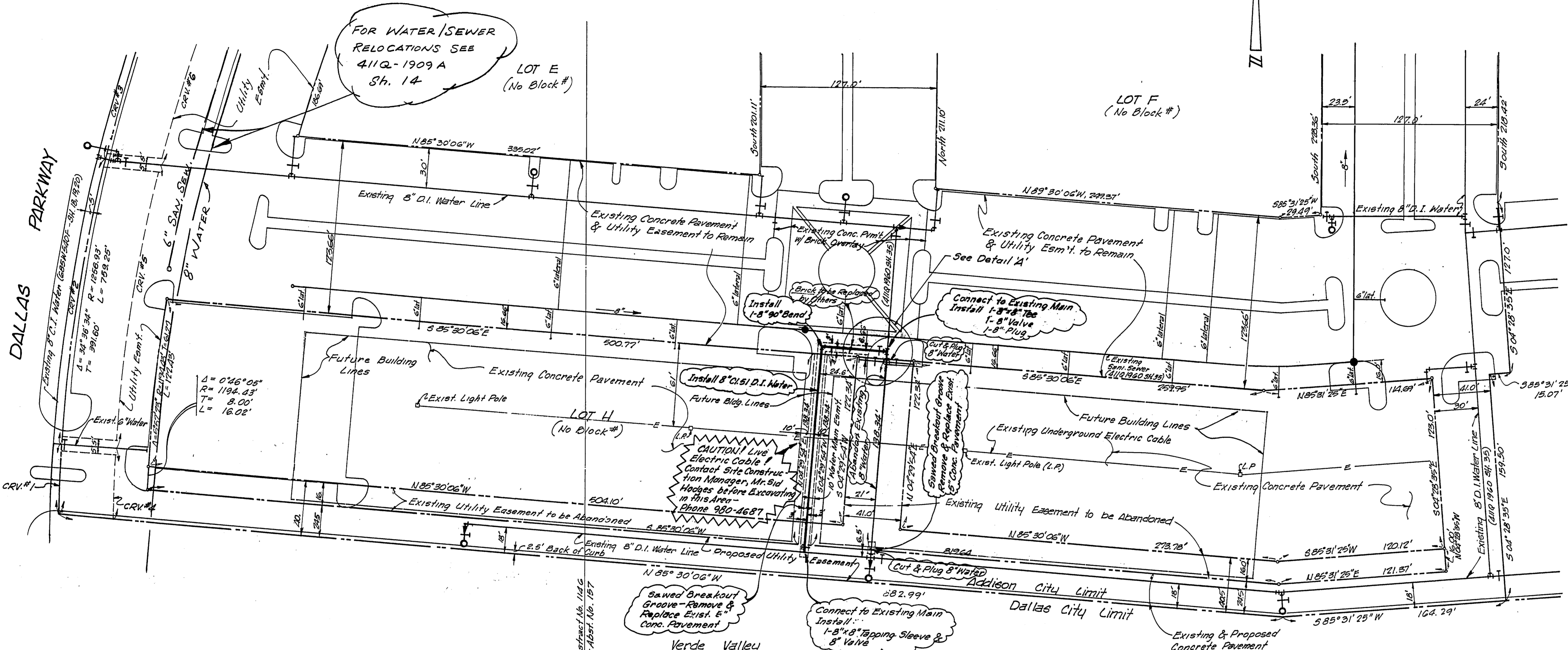
BENCHMARK: STANDARD WATER DEPT. BENCHMARK
 CENTER INLET NORTHWEST CORNER
 BELT LINE ROAD AND DALLAS PKWY.
 ELEV: 632.08

LOCATION: VILLAGE ON THE PARKWAY - PHASE I
 DESIGNED: ALBERT H. HALFF ASSOCIATES, INC. - ENGINEERS
 DATE: 11/19/79
 ENGINEER OF DESIGN: DALLAS WATER UTILITIES DEPT.
 CONTRACT NO. 78-2619, 78-2622 STIMMONS & SEPT. 25, 1978

LOCATION: VILLAGE ON THE PARKWAY - PHASE I
 DESIGNED: ALBERT H. HALFF ASSOCIATES, INC. - ENGINEERS
 DATE: 12-19-78
 ENGINEER OF DESIGN: DALLAS WATER UTILITIES DEPT.
 CONTRACT NO. 78-2619, 78-2622 STIMMONS & SEPT. 25, 1978

WATER & SANITARY SEWER PLANS						
VILLAGE ON THE PARKWAY						
VILLAGE PARKWAY VENTURE						
ALBERT H. HALFF ASSOCIATES, INC. - ENGINEERS						
CITY OF ADDISON, TEXAS						
DESIGN	DRAWN	DATE	SCALE	NOTES	FILE	NO.
AHH	T.P.	MAY 1978	1"=40'	6143	411Q	1960

REVISIONS:
 1. 1/31/79 CHANGED 8" WATER MAIN TO 12" MAIN BETWEEN LOT B & C, CHANGED FIRE HYDRANT AND SERVICE LINE LOCATIONS.
 2. CHANGED 8" WATER SERVICE FOR LOT B TO 6" (MOVED 8" WATER SERVICE FOR LOT B TO 6" EAST)



Second Installment
 Village On The Parkway
 Vol. 79057, Pg. 1765
 Abstract No. 157

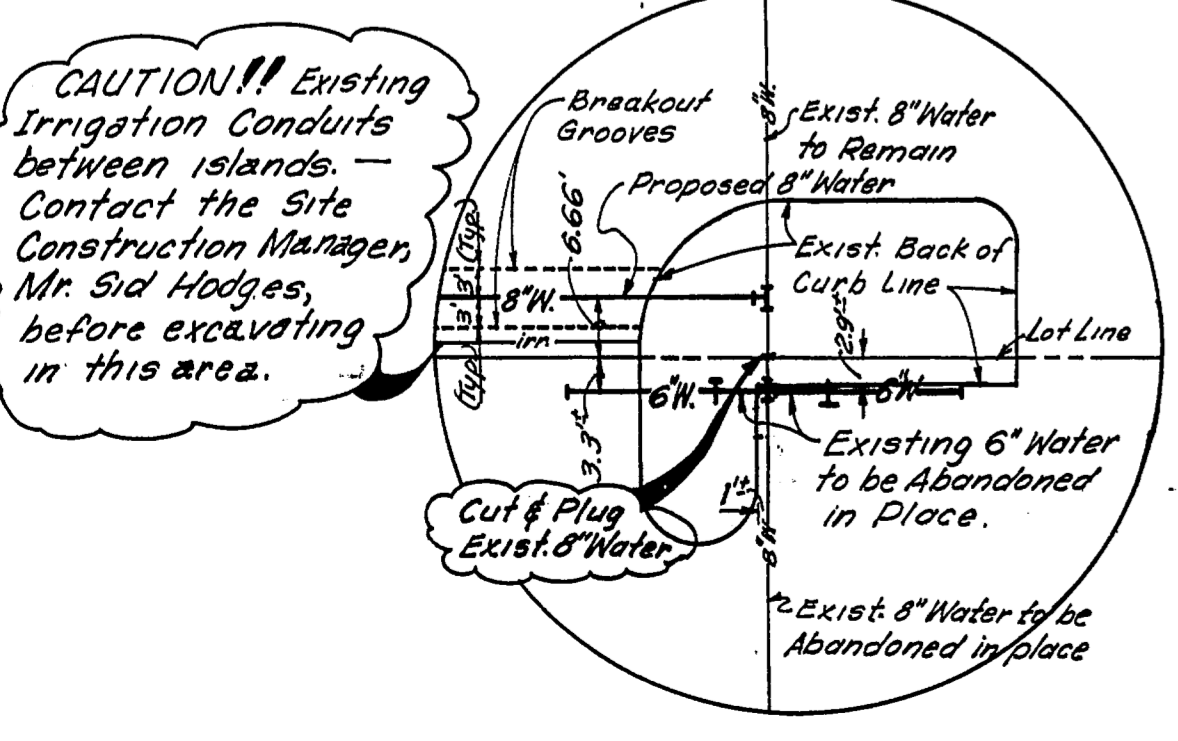
CRV.#	Δ	R	T	L
1	2°16'51"	1256.93'	25.02'	50.04'
2	9°26'42"	1256.93'	103.84'	207.20'
3	11°30'26"	1256.93'	126.05'	252.02'
4	2°21'21"	1216.93'	25.02'	50.04'
5	9°45'28"	1216.93'	103.83'	207.25'
6	11°22'26"	1216.93'	121.19'	241.58'

J. Pancoast Survey, Abstract No. 1146
 Allen Gleason Survey, Abstr. No. 157

Verde Valley
 Parkway Place Addition No. 1
 Vol. 70702 Pg. 1934
 BLOCK A/8170

- General Notes:**
- All water mains shall be ductile iron class 51 water pipe with polyethylene wrap on Pipe, Fittings, and Fire Hydrant Bases.
 - Alternate - All 6" and 8" water mains shall be PVC class 200 water pipe except in Fill Areas and Major and Secondary Thoroughfares as follows:
 For PVC Service Taps 1" and larger, Tapping Saddle shall be used.
 - All water mains shall have a minimum cover below finished grades as follows: 6" & 8" - 48"; 12" - 60"; or as required to clear other utilities.

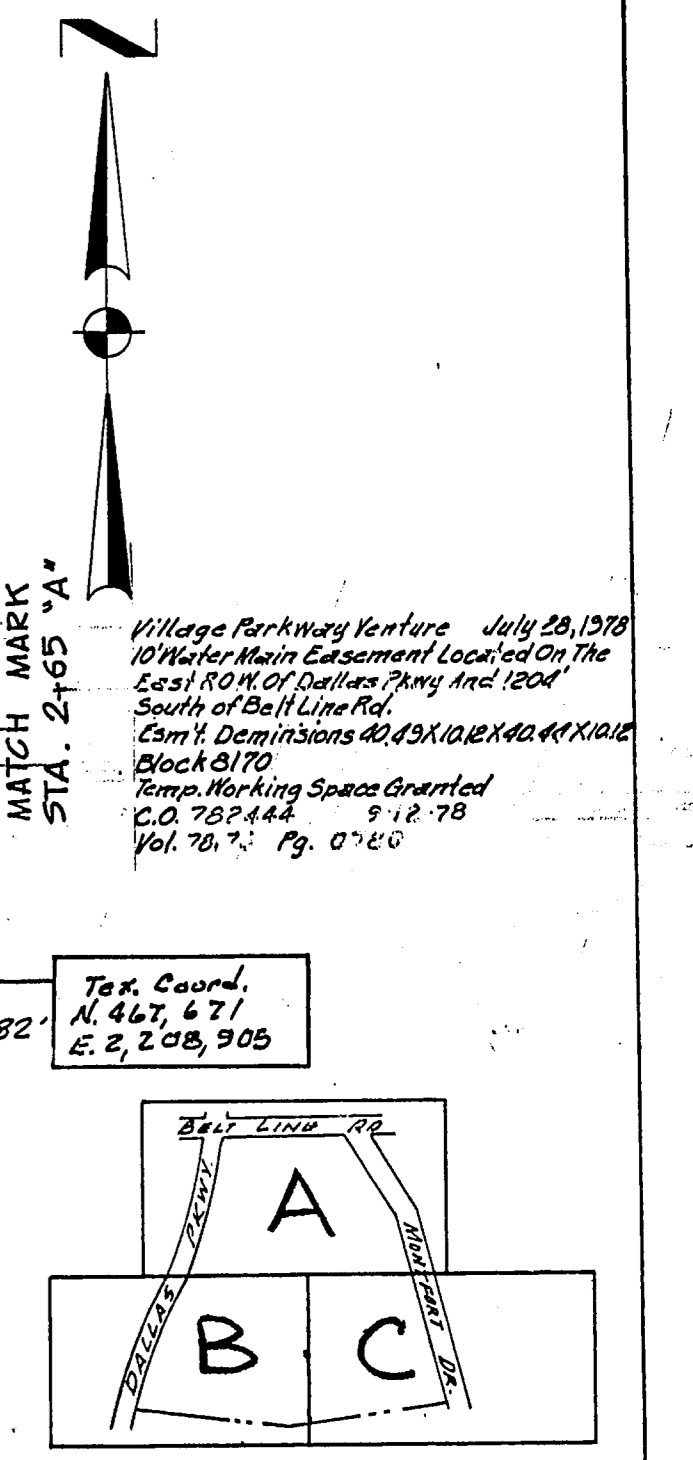
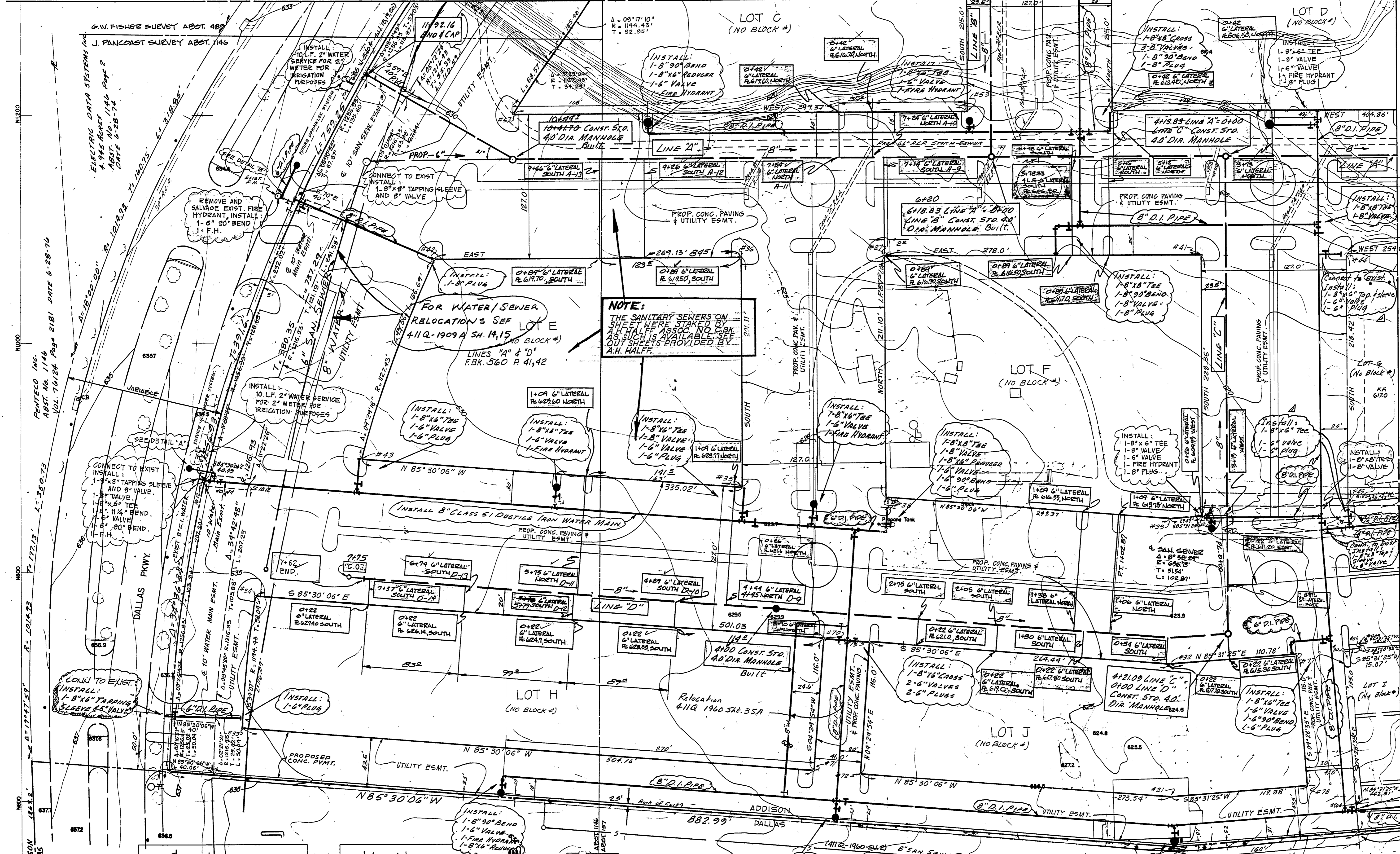
- BENCH MARKS**
- Standard Water Dept. Bench Mark Center Inlet - Northwest Corner Bellline Road and Dallas Parkway. Elev.: 632.08
 - "4" in Top of Fire Hydrant Southeast Corner Bellline Rd. and Dallas Pkwy. Elev.: 632.31



Detail A
 Scale: 1" = 20'

LOCATION: VILLAGE ON THE PARKWAY - PHASE I
 DESIGNED *Michael K. Gooding* DATE *March 08, 1981*
 ALBERT H. HALFF & ASSOCIATES, INC. ENGINEERS
 R.O.W. APPROVED: *Albert Halff* DATE: *6-1-81*
Cal West
 ENGINEER OF DESIGN - DALLAS WATER UTILITIES DEPT.
 CONTRACT No. 81-245-P-541mson Cont. Co. ~ May 23, 1981

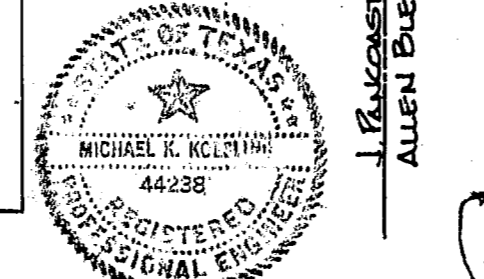
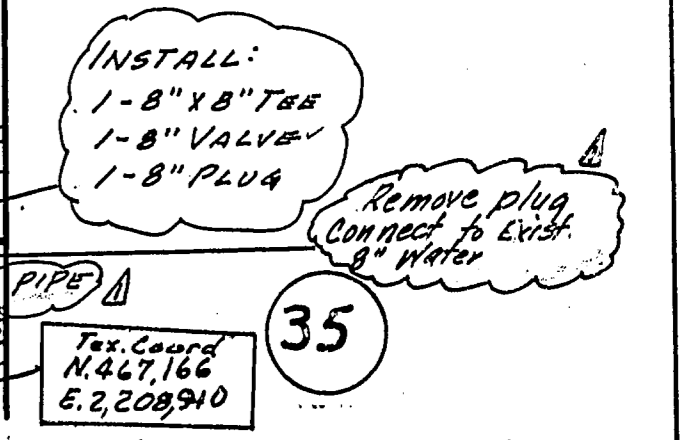
WATER PLAN					
VILLAGE ON THE PARKWAY					
VILLAGE PARKWAY VENTURE					
CITY OF ADDISON, TEXAS					
DALLAS WATER UTILITIES, DEPT.					
DESIGN	DRAWN	DATE	SCALE	NOTES	FILE NO.
R.K.	J.L.	MAR 81	1"=40'	6898	411Q 1960



KEY MAP

LOT CORNER COORDINATES

#	Y	X
31	599.786	2448.241
32	716.143	2448.263
33	663.998	1632.055
34	779.394	1644.281
35	873.083	2072.684
36	1074.196	2072.684
37	1074.196	2199.684
38	863.092	2199.684
39	843.534	2448.286
40	845.835	2477.684
41	1074.196	2477.684
42	1074.196	1803.553
43	899.359	1738.676
44	1074.196	2604.684
45	858.777	2604.684
51	1201.196	2399.684
53	1201.196	2272.684
57	1201.196	1873.314
70	740.044	2143.765
71	624.466	2134.667
72	621.240	2175.541
73	736.883	2184.639
77	724.789	2558.702
78	609.182	2567.755
80	727.989	2579.577
81	729.165	2614.596
804	593.600	2610.113
805	733.150	2614.285



VERDE VALLEY PARKWAY PLACE ADDITION NO. 1 VOL. 70202 PG. 1084 BLOCK A/B/C/D
 BENCHMARK: STANDARD WATER DEPT. BENCHMARK CENTER INLET NW CORNER 8" D.I. LINE TO AND DALLAS SANITARY SEWER DEPT. 652.08
 LOCATION: VILLAGE ON THE PARKWAY SECOND INSTALLMENT
 DESIGNED BY: ALBERT H. HALFF ASSOCIATES, INC. DATE: 12-15-78
 CHECKED BY: ALBERT H. HALFF DATE: 12-15-78
 R.A.W. APPROVED: DATE: 4-25-79
 ENGINEER'S DESIGN FOR WATER UTILITIES DEPT.
 CONTRACT NO. 70-2011, 70-2022 ~ Slinson, Sept 25, 1978

LOCATION: VILLAGE ON THE PARKWAY, PHASE I
 DESIGNED BY: ALBERT H. HALFF ASSOCIATES, INC. ENGINEERS
 P.O. BOX 44288 DALLAS, TEXAS 75248
 ENGINEER OF DESIGN - DALLAS WATER UTILITIES DEPT.
 CONTRACT NO. 70-2011, 70-2022 ~ Slinson, Sept 25, 1978

WATER & SANITARY SEWER PLANS

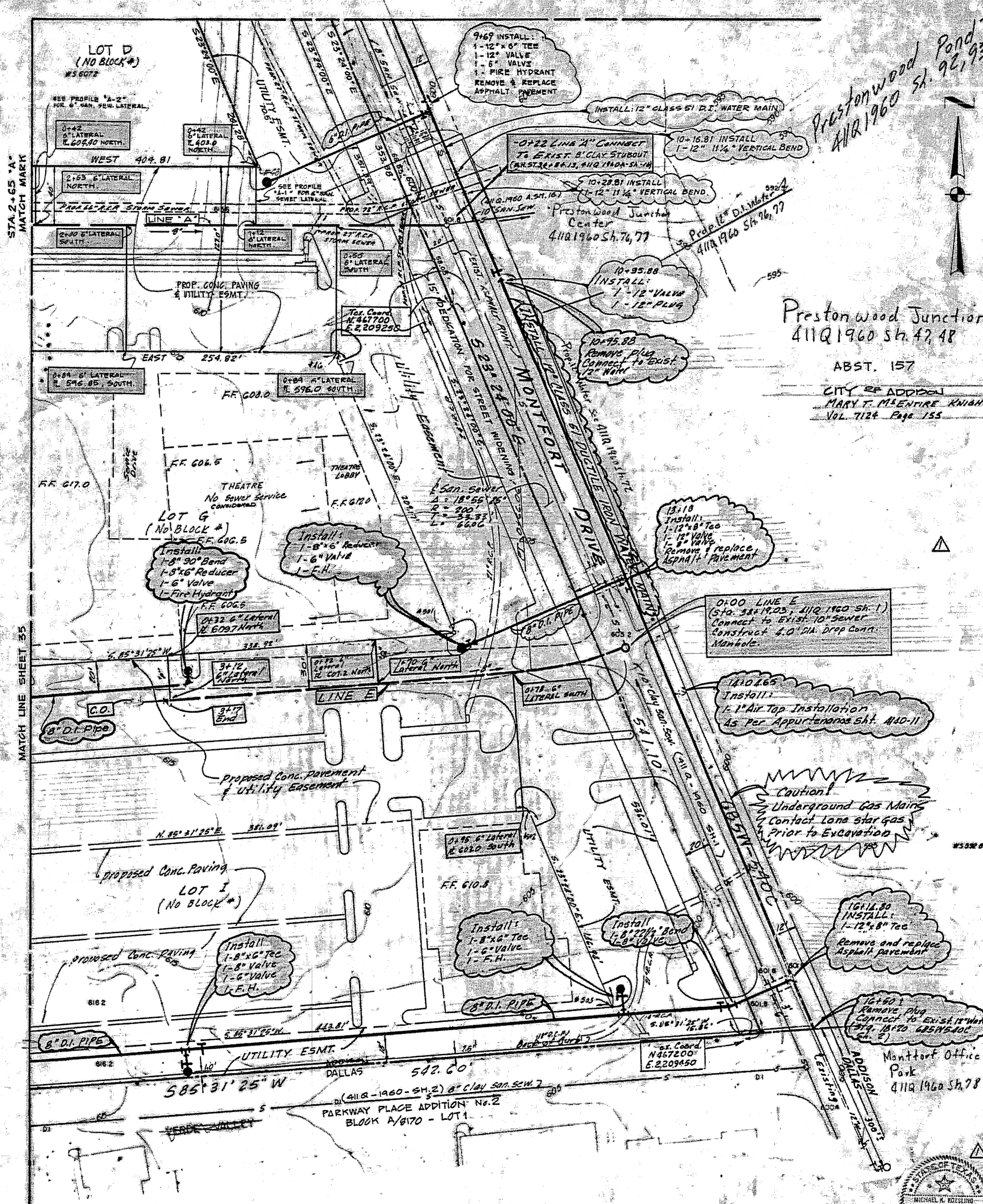
VILLAGE ON THE PARKWAY
VILLAGE PARKWAY VENTURE

ALBERT H. HALFF ASSOCIATES, INC. - ENGINEERS
CITY OF DALLAS, TEXAS

DESIGN	DRAWN	DATE	SCALE	NOTES	FILE	NO.
ALH: 10/20/78	T.P.	MAY 1978	1"=40'	6143	411Q	1960

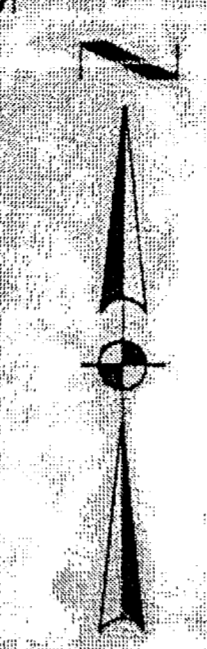
ELECTRIC DATA SYSTEMS INC. 4.945 ACRES ABST. NO. 1146 PAGE 2 DATE 6-28-76
 PANTICO INC. ABST. NO. 1146 VOL. 76124 PAGE 2181 DATE 6-28-76
 G.W. FISHER SURVEY ABST. 488
 J. PANCAST SURVEY ABST. 1146
 DALLAS PARKWAY
 ADDISON DALLAS

Village Parkway Venture July 28, 1978
 12" Water Main Extension Located on the East 101.01' Dallas Hwy and 1200' South of Bell Line Rd.
 City of Dallas, Texas
 City of Dallas, Texas
 Temp. Working Space Granted
 C.O. 782444 9/18/78
 Vol. 76, 77, 79, 80-82



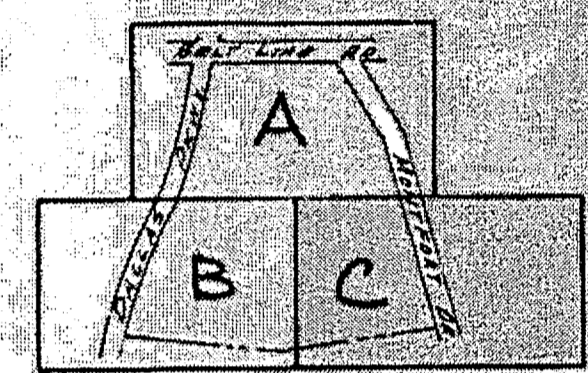
Prestonwood Junction
411Q 1960 Sh. 47, 48

ABST. 157
CITY OF ADDISON
MARY T. MCENTIRE KNIGHT
VOL. 7124 Page 155



WATER & SANITARY SEWER GENERAL NOTES

- ALL 12" AND SMALLER WATER LINES TO BE CLASS 51 D.I.
- ALL WATER LINES TO HAVE MINIMUM COVER AS FOLLOWS:
a. 3' OR LESS 4' BELOW APPROVED STREET GRADES OR AS REQUIRED TO CLEAR OTHER UTILITIES.
b. 12" 5' BELOW APPROVED STREET GRADES OR AS REQUIRED TO CLEAR OTHER UTILITIES.
- SANITARY SEWER LATERALS SHALL BE SIZED AND LOCATED AS SHOWN.
- DUE TO SOIL RESISTIVITY READINGS OF LESS THAN 2000 OHMS PER C.C., ALL D.I. PIPE SHALL HAVE 8 MIL POLYETHYLENE WRAP.
- WATER AND SANITARY SEWER ESMTS. SHALL INCLUDE ADDITIONAL AREA OF WORKING SPACE FOR CONSTRUCTION AND MAINTENANCE OF THE SYSTEM. ADDITIONAL ESMT. AREA ALSO CONVEYED FOR INSTALLATION AND MAINTENANCE OF MANHOLES, CLEANOUTS, FIRE HYDRANTS, SERVICES, LATERALS, METERS AND OTHER APPURTENANCES NECESSARY FOR PROPER OPERATION OF THE SYSTEM.
- EXTEND WATER SERVICES AND SANITARY SEWER LATERALS 2' BEYOND PROPOSED CURB.
- ALL WATER SERVICES TO BE SIZED AND LOCATED AS SHOWN.
- THE CONTRACTOR SHALL PROTECT ALL PUBLIC UTILITIES IN THE CONSTRUCTION OF THIS PROJECT. ALL MANHOLES, CLEANOUTS, VALVE BOXES, FIRE HYDRANTS, ETC., MUST BE ADJUSTED TO PROPER LINE AND GRADE BY THE DEVELOPER AND OR THE CONSTRUCTOR PRIOR TO AND AFTER PLACING OF PERMANENT PAVING. UTILITIES MUST BE MAINTAINED TO PROPER LINE AND GRADE DURING THE CONSTRUCTION OF THE PAVING FOR THE DEVELOPMENT.
- ALL FIRE HYDRANTS SHALL BE MUELLER CENTURY AS REQUIRED BY THE CITY OF ADDISON.
- ALL WATER SERVICES TO EXISTING MAINS SHALL BE INSTALLED BY CONTRACTOR.
- SANITARY SEWER LATERALS "B" & "D" SHALL BE 6"
- WATER SERVICES "A" SHALL BE 6"



KEY MAP

LOT CORNER COORDINATES

#	Y	X
48	1201.196	2804.543
46	1076.196	2857.801
501	886.230	2962.970
502	762.893	2994.212
503	628.089	3052.569

BENCH MARK:
STANDARD WATER DEPT. BENCH MARK CENTER INLET - NORTHWEST CORNER BELTLINE ROAD AND DALLAS PKWY. ELEV: 632.08

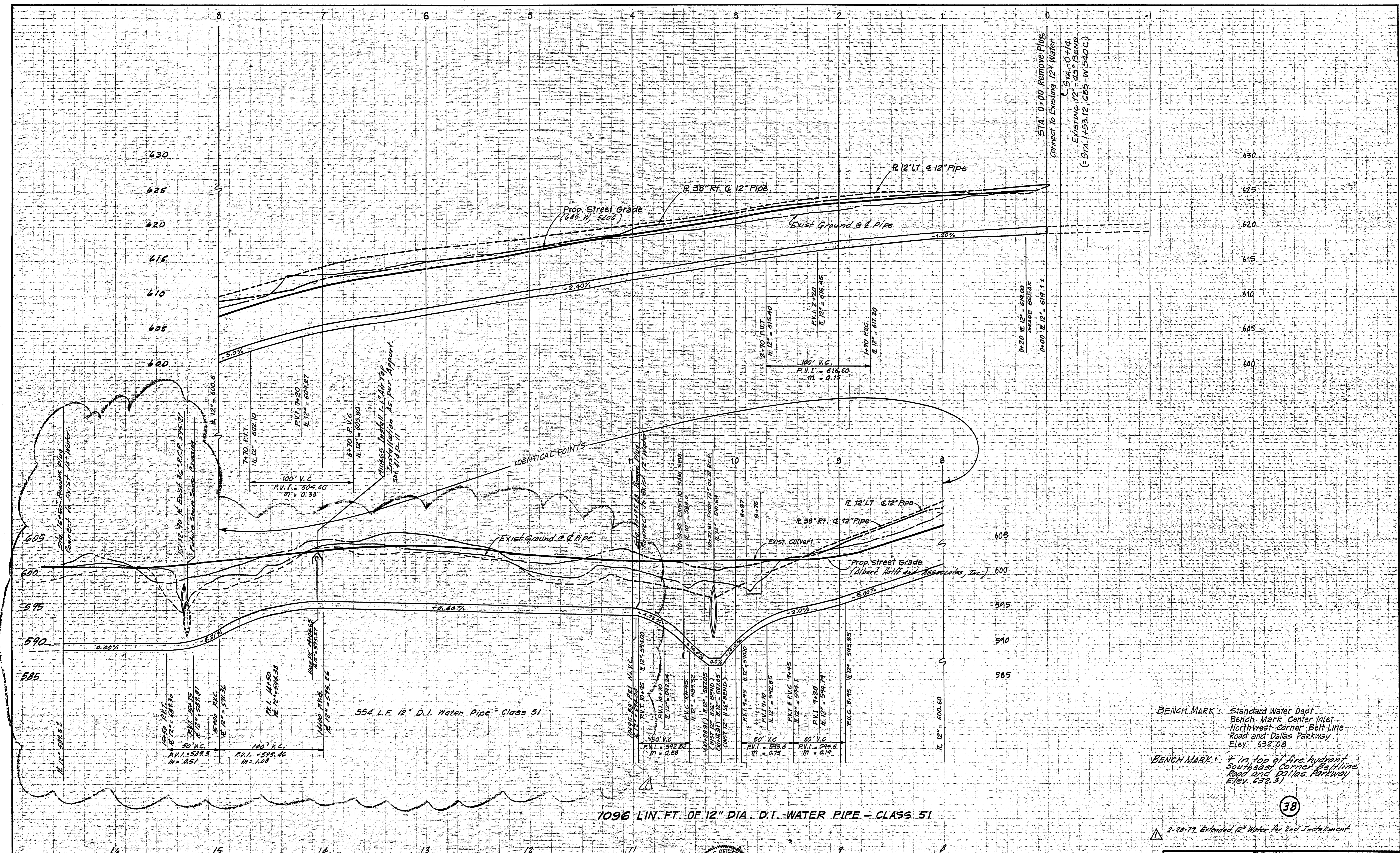
BENCH MARK:
FIN TOP OF FIRE HYDRANT SOUTHEAST CORNER BELTLINE RD. AND DALLAS PKWY. ELEV. 632.31

LOCATION: VILLAGE ON THE PARKWAY - PHASE I
DESIGNED: *[Signature]* DATE: 2/21/78
ALBERT H. HALFF ASSOCIATES, INC., ENGINEERS
R.O.W. APPROVED: *[Signature]* DATE: 10-17-78
ENGINEER OF DESIGN - DALLAS WATER UTILITIES DEPT.
CONTRACT NO. 78-2017, 78-2622P - Stinson Sept. 25, 1978



Row Approved Subject to letter of 4-12-79
LOCATION: VILLAGE ON THE PARKWAY - 2nd Instal.
DESIGNED: *[Signature]* DATE: 3-15-79
ALBERT H. HALFF ASSOCIATES, INC., ENGINEERS
R.O.W. APPROVED: *[Signature]* DATE: 4-25-79
ENGINEER OF DESIGN - DALLAS WATER UTILITIES DEPT.
CONTRACT NO. 79-2992P-240P - Stinson April 19, 1979

WATER & SANITARY SEWER PLANS						
VILLAGE ON THE PARKWAY						
VILLAGE PARKWAY VENTURE						
ALBERT H. HALFF ASSOCIATES, INC., ENGINEERS						
CITY OF ADDISON, TEXAS						
DESIGN	DRAWN	DATE	SCALE	NOTES	FILE	NO.
AH.H. & ASSOC.	T.P.	MAY 1978	1" = 40'	6143	411Q	1960



BENCH MARK: Standard Water Dept.
Bench Mark Center Inlet
Northwest Corner Belt Line
Road and Dallas Parkway
Elev. 632.08

BENCH MARK: 7 in. top of fire hydrant
Southeast Corner Beltline
Road and Dallas Parkway
Elev. 632.31

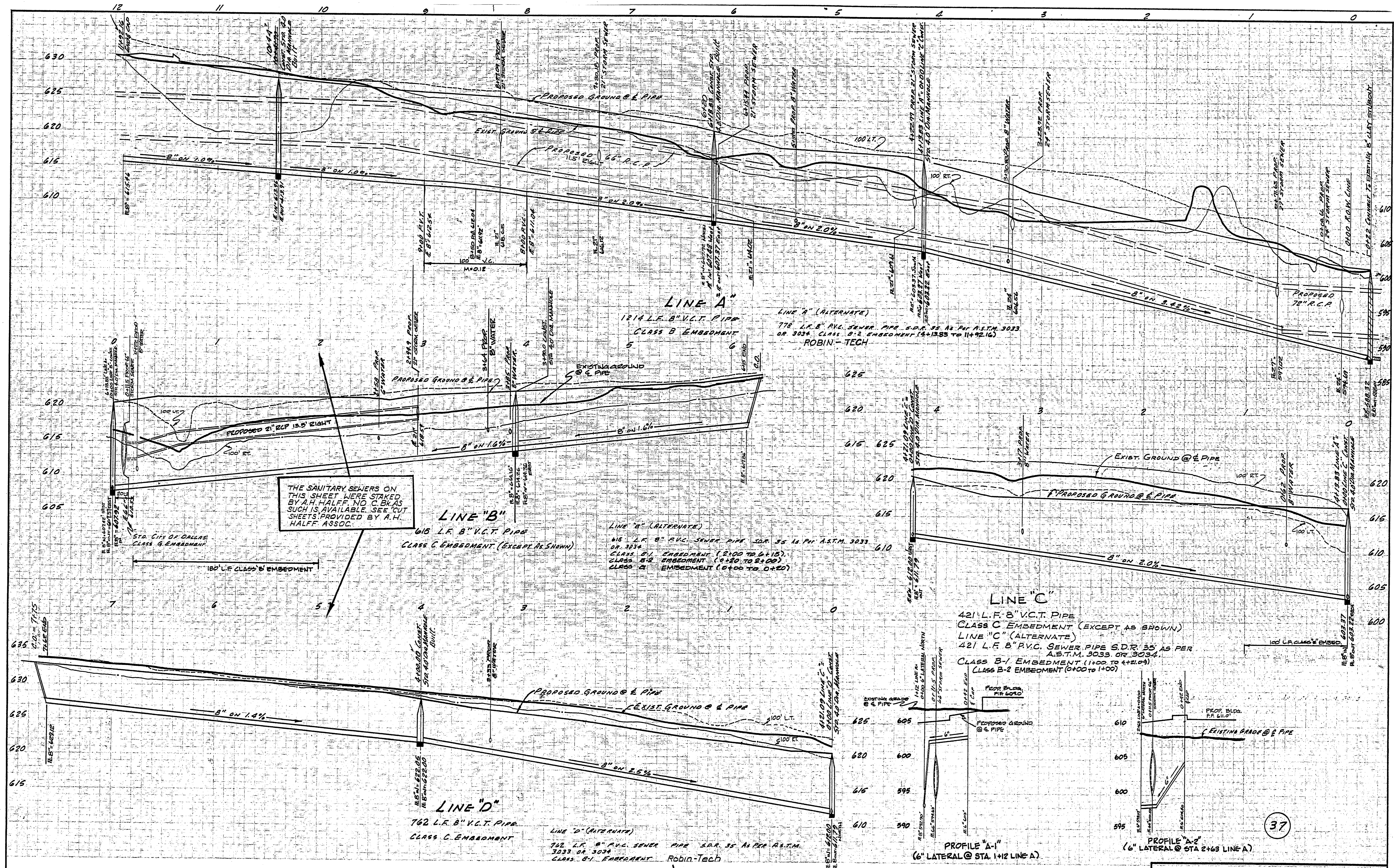
38

2.28.78 Extended 12" Water for 2nd Installation

LOCATION: VILLAGE ON THE PARKWAY 2ND INST.
DESIGNED: *Michael S. Keating* DATE: 3-15-78
ALBERT H. HALFF ASSOCIATES INC. ENGINEERS
R.O.W. APPROVED DATE:
Cal Westlund 4-25-79
ENGINEER OF DESIGN ~ DALLAS WATER UTILITIES DEPT.
CONTRACT NO. 79-239 P, 79-240 P ~ Stinson April 19, 1979

LOCATION: VILLAGE ON THE PARKWAY PHASE I
DESIGNED: *Albert H. Halff* DATE: July 21, 1978
ALBERT H. HALFF ASSOCIATES INC. ENGINEERS
R.O.W. APPROVED DATE:
Cal Westlund 10-17-78
ENGINEER OF DESIGN ~ DALLAS WATER UTILITIES DEPT.
CONTRACT NO. 78-261P, 78-262P ~ Stinson Sept. 23, 1978

PROFILE						
12" CLASS 51 D.I. WATER MAIN						
MONTFORT DRIVE						
VILLAGE ON THE PARKWAY						
ALBERT H. HALFF AND ASSOCIATES - ENGINEERS						
CITY OF ADDISON, TEXAS DALLAS FRANCHISE						
DESIGN	DRAWN	DATE	SCALE	NOTES	FILE	NO.
A.H.H. Assoc. Inc.	T.N.	JUN. 78	H 1" = 40' V 1" = 6'	C143	411 Q	1960



LOCATION: VILLAGE ON THE PARKWAY PHASE I
 DESIGNED BY: [Signature] DATE: May 21/78
 ALBERT H. HALFF ASSOCIATES, INC. - ENGINEERS
 P.O.U. APPROVED: [Signature] DATE: 10-17-78
 ENGINEER OR DESIGNER: DALLAS WATER UTILITIES DEPT.
 CONTRACT NO. 78-2017, 78-2022 - Shimsco Sept. 25, 1978

BENCHMARK: STANDARD WATER DEPT. BENCHMARK
 CENTER INLET NORTHWEST CORNER
 BELTLINE ROAD AND DALLAS PKWY.
 ELEV. 632.08

SANITARY SEWER PROFILE						
VILLAGE ON THE PARKWAY						
VILLAGE PARKWAY VENTURE						
ALBERT H. HALFF ASSOCIATES, INC. - ENGINEERS						
CITY OF ADDISON, TEXAS DALLAS FRANCHISE						
DESIGN	DRAWN	DATE	SCALE	NOTES	FILE	NO.
ALL RECD	T.P.	MAY 1978	1"=60' 1"=40'	6143	#110	1960