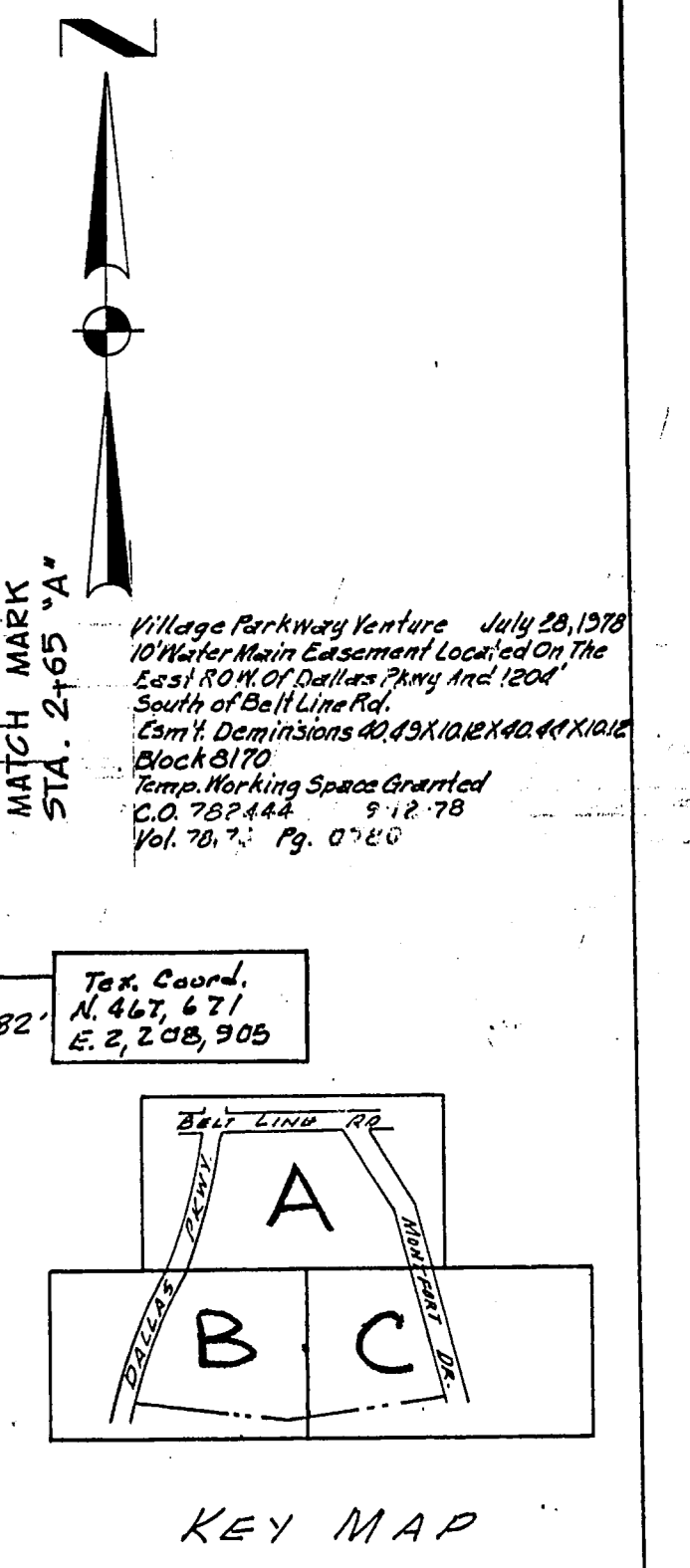


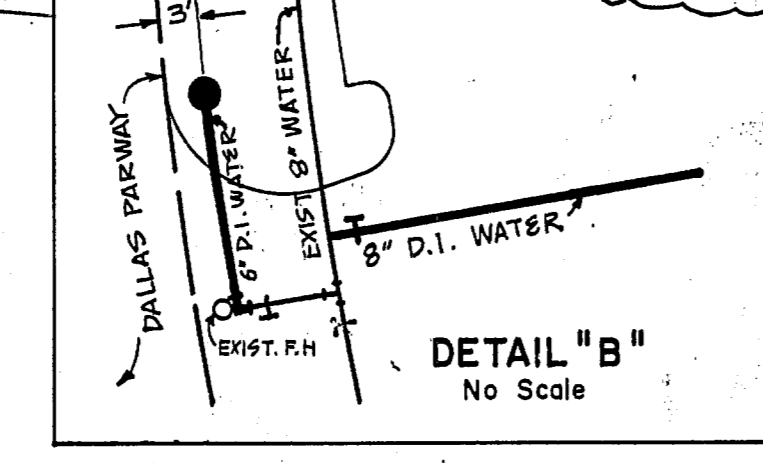
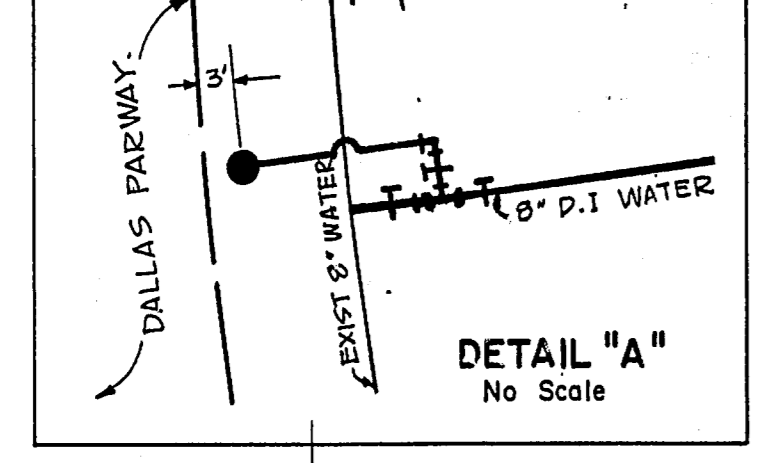
NOTE:
THE SANITARY SEWERS ON SHEET 35 ARE TAKEN TO BE AS SUCH IS AVAILABLE. SEE OUT SHEETS PROVIDED BY A.H. HALFF.

FOR WATER/SEWER RELOCATION'S SEE LOT E 411Q-1909A SH. 14,15 (NO BLOCK #) LINES "A" & "D" F.B.K. 560 R. 41,42



LOT CORNER COORDINATES

#	Y	X
31	599.786	2448.241
32	716.143	2448.263
33	663.998	1632.055
34	779.394	1644.281
35	873.083	2072.684
36	1074.196	2072.684
37	1074.196	2199.684
38	863.092	2199.684
39	843.534	2448.286
40	845.835	2477.684
41	1074.196	2477.684
42	1074.196	1803.553
43	899.359	1738.676
44	1074.196	2604.684
45	858.777	2604.684
51	1201.196	2399.684
53	1201.196	2272.684
57	1201.196	1873.314
70	740.044	2143.765
71	624.466	2134.667
72	621.240	2175.541
73	736.883	2184.639
77	724.789	2558.702
78	609.182	2567.755
80	727.989	2579.577
81	729.165	2614.596
804	593.600	2610.113
805	733.150	2614.285



VERDE VALLEY PARKWAY PLACE ADDITION NO. 1 VOL. 70202 PG. 1084 BLOCK A/B/C/D
BENCHMARK: STANDARD WATER DEPT. BENCHMARK CENTER INLET NW CORNER 845' LINE RD AND DALLAS HWY. ELEV. 628.08
LOCATION: VILLAGE ON THE PARKWAY SECOND INSTALLMENT
DESIGNED BY ALBERT H. HALFF ASSOCIATES, INC. DATE 12-15-78
DRAWN BY T.P. DATE 1-25-79
ENGINEER'S DESIGN, DALLAS WATER UTILITIES DEPT.
Contract No. 79-239 P479-240P - Stinson Land Co. - April, 1979

LOCATION: VILLAGE ON THE PARKWAY, PHASE I
DESIGNED BY ALBERT H. HALFF ASSOCIATES, INC. ENGINEERS
P.O. BOX 2002, DALLAS, TEXAS 75210
ENGINEER OF DESIGN - DALLAS WATER UTILITIES DEPT.
CONTRACT NO. 79-261P, 79-262P - Stinson, Sept 23, 1978

WATER & SANITARY SEWER PLANS

VILLAGE ON THE PARKWAY
VILLAGE PARKWAY VENTURE

ALBERT H. HALFF ASSOCIATES, INC. - ENGINEERS
CITY OF DALLAS, TEXAS

DESIGN	DRAWN	DATE	SCALE	NOTES	FILE	NO.
ALH: 10/20/78	T.P.	MAY 1978	1"=40'	6143	411Q	1960