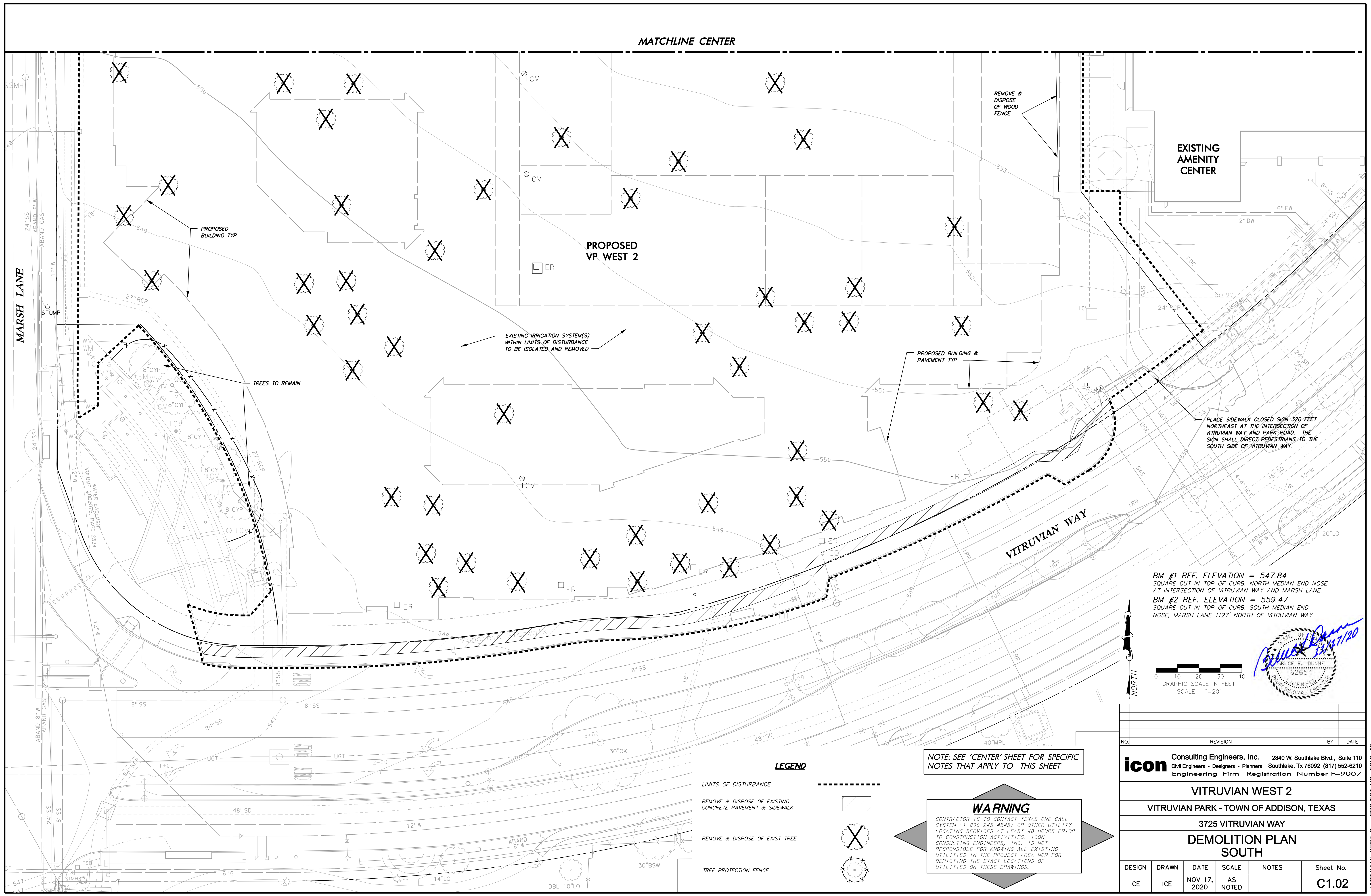


MATCHLINE CENTER



EXISTING AMENITY CENTER

PROPOSED VP WEST 2

PROPOSED BUILDING TYP

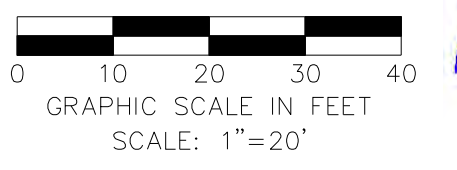
PROPOSED BUILDING & PAVEMENT TYP

EXISTING IRRIGATION SYSTEM(S) WITHIN LIMITS OF DISTURBANCE TO BE ISOLATED AND REMOVED

TREES TO REMAIN

PLACE SIDEWALK CLOSED SIGN 320 FEET NORTHEAST AT THE INTERSECTION OF VITRUVIAN WAY AND PARK ROAD. THE SIGN SHALL DIRECT PEDESTRIANS TO THE SOUTH SIDE OF VITRUVIAN WAY.

BM #1 REF. ELEVATION = 547.84  
 SQUARE CUT IN TOP OF CURB, NORTH MEDIAN END NOSE,  
 AT INTERSECTION OF VITRUVIAN WAY AND MARSH LANE.  
 BM #2 REF. ELEVATION = 559.47  
 SQUARE CUT IN TOP OF CURB, SOUTH MEDIAN END  
 NOSE, MARSH LANE 1127' NORTH OF VITRUVIAN WAY.



**LEGEND**

- LIMITS OF DISTURBANCE
- REMOVE & DISPOSE OF EXISTING CONCRETE PAVEMENT & SIDEWALK
- REMOVE & DISPOSE OF EXIST TREE
- TREE PROTECTION FENCE

NOTE: SEE 'CENTER' SHEET FOR SPECIFIC NOTES THAT APPLY TO THIS SHEET

**WARNING**

CONTRACTOR IS TO CONTACT TEXAS ONE-CALL SYSTEM (1-800-245-4545) OR OTHER UTILITY LOCATING SERVICES AT LEAST 48 HOURS PRIOR TO CONSTRUCTION ACTIVITIES. ICON CONSULTING ENGINEERS, INC. IS NOT RESPONSIBLE FOR KNOWING ALL EXISTING UTILITIES IN THE PROJECT AREA NOR FOR DEPICTING THE EXACT LOCATIONS OF UTILITIES ON THESE DRAWINGS.

NO.	REVISION	BY	DATE

**icon Consulting Engineers, Inc.** 2840 W. Southlake Blvd., Suite 110  
 Civil Engineers - Designers - Planners Southlake, TX 76092 (817) 552-6210  
 Engineering Firm Registration Number F-9007

**VITRUVIAN WEST 2**  
**VITRUVIAN PARK - TOWN OF ADDISON, TEXAS**  
**3725 VITRUVIAN WAY**  
**DEMOLITION PLAN**  
**SOUTH**

DESIGN	DRAWN	DATE	SCALE	NOTES	Sheet No.
ICE	ICE	NOV 17, 2020	AS NOTED		<b>C1.02</b>

VITRUVIAN WEST 2 - PROJECT NO. 5019-18