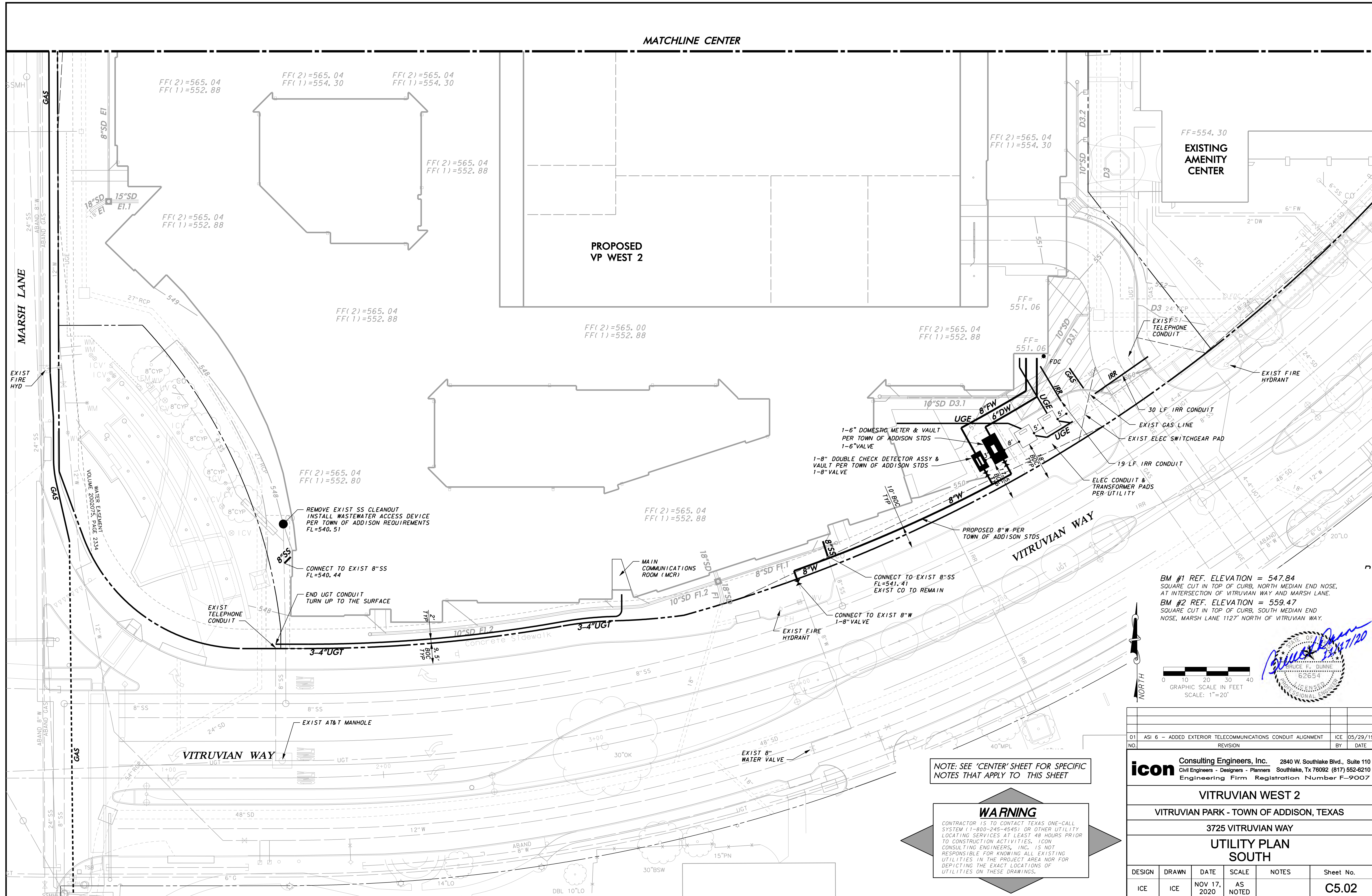
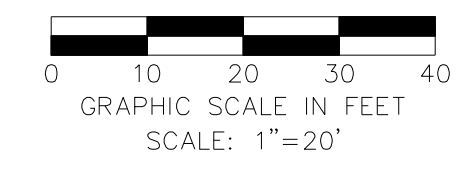


MATCHLINE CENTER



BM #1 REF. ELEVATION = 547.84
 SQUARE CUT IN TOP OF CURB, NORTH MEDIAN END NOSE,
 AT INTERSECTION OF VITRUVIAN WAY AND MARSH LANE.
 BM #2 REF. ELEVATION = 559.47
 SQUARE CUT IN TOP OF CURB, SOUTH MEDIAN END
 NOSE, MARSH LANE 1127' NORTH OF VITRUVIAN WAY.



NOTE: SEE 'CENTER' SHEET FOR SPECIFIC NOTES THAT APPLY TO THIS SHEET

WARNING
 CONTRACTOR IS TO CONTACT TEXAS ONE-CALL SYSTEM (1-800-245-4545) OR OTHER UTILITY LOCATING SERVICES AT LEAST 48 HOURS PRIOR TO CONSTRUCTION ACTIVITIES. ICON CONSULTING ENGINEERS, INC. IS NOT RESPONSIBLE FOR KNOWING ALL EXISTING UTILITIES IN THE PROJECT AREA NOR FOR DEPICTING THE EXACT LOCATIONS OF UTILITIES ON THESE DRAWINGS.

01	ASH 6 - ADDED EXTERIOR TELECOMMUNICATIONS CONDUIT ALIGNMENT	ICE	05/29/19
NO.	REVISION	BY	DATE

icon Consulting Engineers, Inc. 2840 W. Southlake Blvd., Suite 110
 Civil Engineers - Designers - Planners Southlake, TX 76092 (817) 552-6210
 Engineering Firm Registration Number F-9007

VITRUVIAN WEST 2
 VITRUVIAN PARK - TOWN OF ADDISON, TEXAS
 3725 VITRUVIAN WAY
 UTILITY PLAN
 SOUTH

DESIGN	DRAWN	DATE	SCALE	NOTES	Sheet No.
ICE	ICE	NOV 17, 2020	AS NOTED		C5.02

VITRUVIAN WEST 2 - PROJECT NO. 5019-18