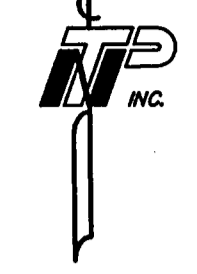


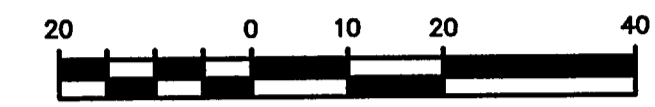
MATCHLINE STA 8+00

LISTING OF PROPOSED SERVICES/METERS AND VALVES

STATION	LINE DESIGNATION	NORTHING	EASTING	MATERIALS
0+06.24	WL 'B'	4930.40	5041.84	12"x8" REDUCER & 8" GATE VALVE
1+06.13	WL 'B'	4994.37	4962.28	8" GATE VALVE
1+14.56	WL 'B'	4994.42	4953.85	8" GATE VALVE
2+16.32	WL 'B'	4995.00	4892.10	8" GATE VALVE
2+51.83	WL 'B'	4976.16	4824.35	8" GATE VALVE
2+62.04	WL 'B'	4976.22	4814.13	2" TAPPING SADDLE & 28 LF 2" TYPE 'K' COPPER SERVICE
4+61.13	WL 'B'	4977.47	4555.05	8" GATE VALVE
4+89.56	WL 'B'	4977.52	4586.62	8" GATE VALVE
6+01.47	WL 'B'	5059.06	4555.91	8" GATE VALVE
6+35.53	WL 'B'	5085.63	4537.86	8" GATE VALVE
7+46.14	WL 'B'	5196.24	4537.63	2" TAPPING SADDLE & 28 LF 2" TYPE 'K' COPPER SERVICE
7+51.43	WL 'B'	5201.53	4537.62	2" TAPPING SADDLE & 28 LF 2" TYPE 'K' COPPER SERVICE



GRAPHIC SCALE

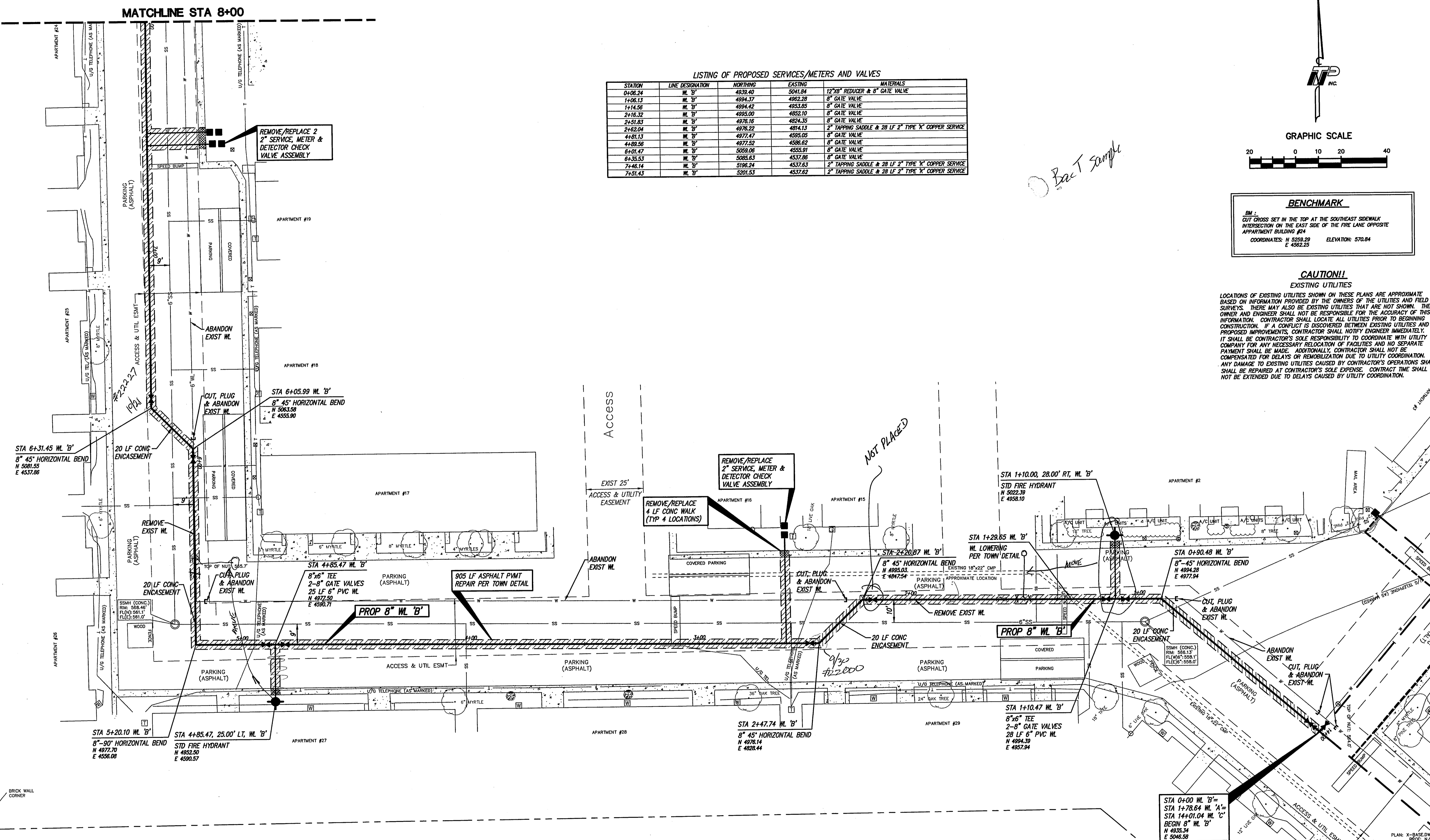


BENCHMARK

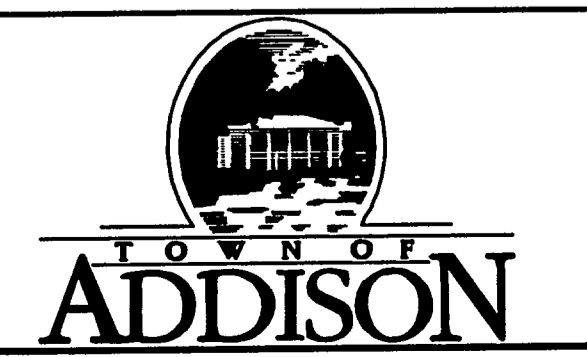
BM :
CUT CROSS SET IN THE TOP AT THE SOUTHEAST SIDEWALK
INTERSECTION ON THE EAST SIDE OF THE FIRE LANE OPPOSITE
APARTMENT BUILDING #24
COORDINATES: N 5258.29 E 4958.25 ELEVATION: 570.84

CAUTION!

EXISTING UTILITIES
LOCATIONS OF EXISTING UTILITIES SHOWN ON THESE PLANS ARE APPROXIMATE
BASED ON INFORMATION PROVIDED BY THE OWNERS OF THE UTILITIES AND FIELD
SURVEYS. THERE MAY ALSO BE EXISTING UTILITIES THAT ARE NOT SHOWN. THE
OWNER AND ENGINEER SHALL NOT BE RESPONSIBLE FOR THE ACCURACY OF THIS
INFORMATION. CONTRACTOR SHALL LOCATE ALL UTILITIES PRIOR TO BEGINNING
CONSTRUCTION. IF A CONFLICT IS DISCOVERED BETWEEN EXISTING UTILITIES AND
PROPOSED IMPROVEMENTS, CONTRACTOR SHALL NOTIFY ENGINEER IMMEDIATELY.
IT SHALL BE CONTRACTOR'S SOLE RESPONSIBILITY TO COORDINATE WITH UTILITY
COMPANY FOR ANY NECESSARY RELOCATION OF FACILITIES AND NO SEPARATE
PAYMENT SHALL BE MADE. ADDITIONALLY, CONTRACTOR SHALL NOT BE
COMPENSATED FOR DELAYS OR REMOBILIZATION DUE TO UTILITY COORDINATION.
ANY DAMAGE TO EXISTING UTILITIES CAUSED BY CONTRACTOR'S OPERATIONS SHALL
SHALL BE REPAIRED AT CONTRACTOR'S SOLE EXPENSE. CONTRACT TIME SHALL
NOT BE EXTENDED DUE TO DELAYS CAUSED BY UTILITY COORDINATION.



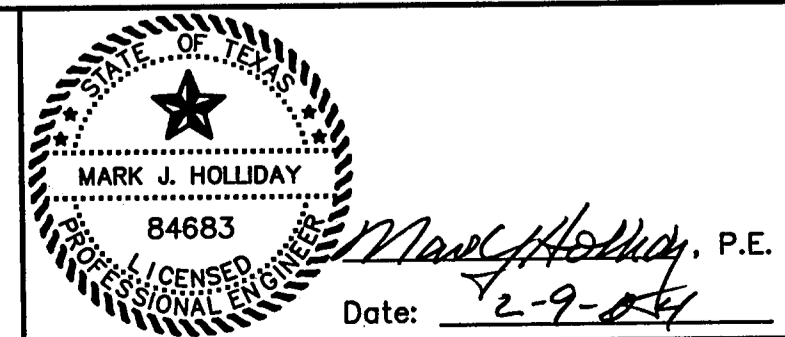
NO.	REVISION	BY	DATE



SCALE
HORIZ
1" = 20'
VERT
N/A
DATE
FEB 2004



TEAGUE NALL AND PERKINS
ENGINEERS • SURVEYORS • CONSULTANTS
1100 Macon Street Fort Worth, Texas 76102 (817) 336-5773
235 W. Hickory Street #100 Denton, Texas 76201 (940) 383-4177
12160 N. Abrams Road #508 Dallas, Texas 75243 (214) 461-9867



TOWN OF ADDISON, TEXAS
TALISKER APARTMENTS
WATER LINE IMPROVEMENTS
WATER LINE 'B' STA 0+00 TO 8+00
TNP PROJECT
ADD03169
SHEET
6
OF
11