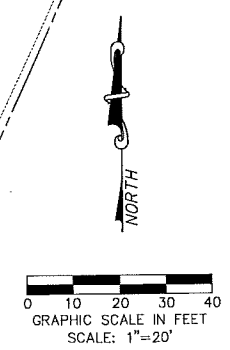


RECEIVED  
 FEB 17 2014  
 By \_\_\_\_\_

**PRELIMINARY DESIGN 2**  
**BROOKHAVEN TRAIL CULVERT**  
**AT VITRUVIAN PARK**

2/17/14

**icon Consulting Engineers, Inc.**  
 Civil Engineers - Designers - Planners  
 Bicentennial Financial Center  
 250 W. Southlake Blvd., Suite 117  
 Southlake, Tx 76092  
 Phone: (817) 552-6210  
 Fax: (817) 778-4845



15' DRAINAGE & UTILITY EASEMENT VOLUME 74044, PAGE 0801  
 70' FLOODWAY EASEMENT VOLUME 74044, PAGE 0801

20' T.P. & L EASEMENT VOLUME 71041, PAGE 692

20' T.P. & L EASEMENT VOLUME 71041, PAGE 692

GRADE TO DRAIN

STA 98+11.37 BT. 13.04' LT  
 CONST CONC HDWL CH-PW-S  
 FOR 2-24" RCP 30° SKEW

35 LF 2-24" RCP @ 1.00%

VIS 100  
 TP=549.80  
 FL=546.30

PT STA. 98+77.22  
 RIM 549.12  
 FL 543.92

RIM 549.76  
 FL IN 543.46  
 FL OUT 531.08

553.46  
 553.30  
 553.36

553.87  
 552.91

553.23  
 552.91

549.83  
 549.86

549.83  
 549.86

549.83  
 549.86

549.83  
 549.86

549.83  
 549.86

549.83  
 549.86

549.83  
 549.86

549.83  
 549.86

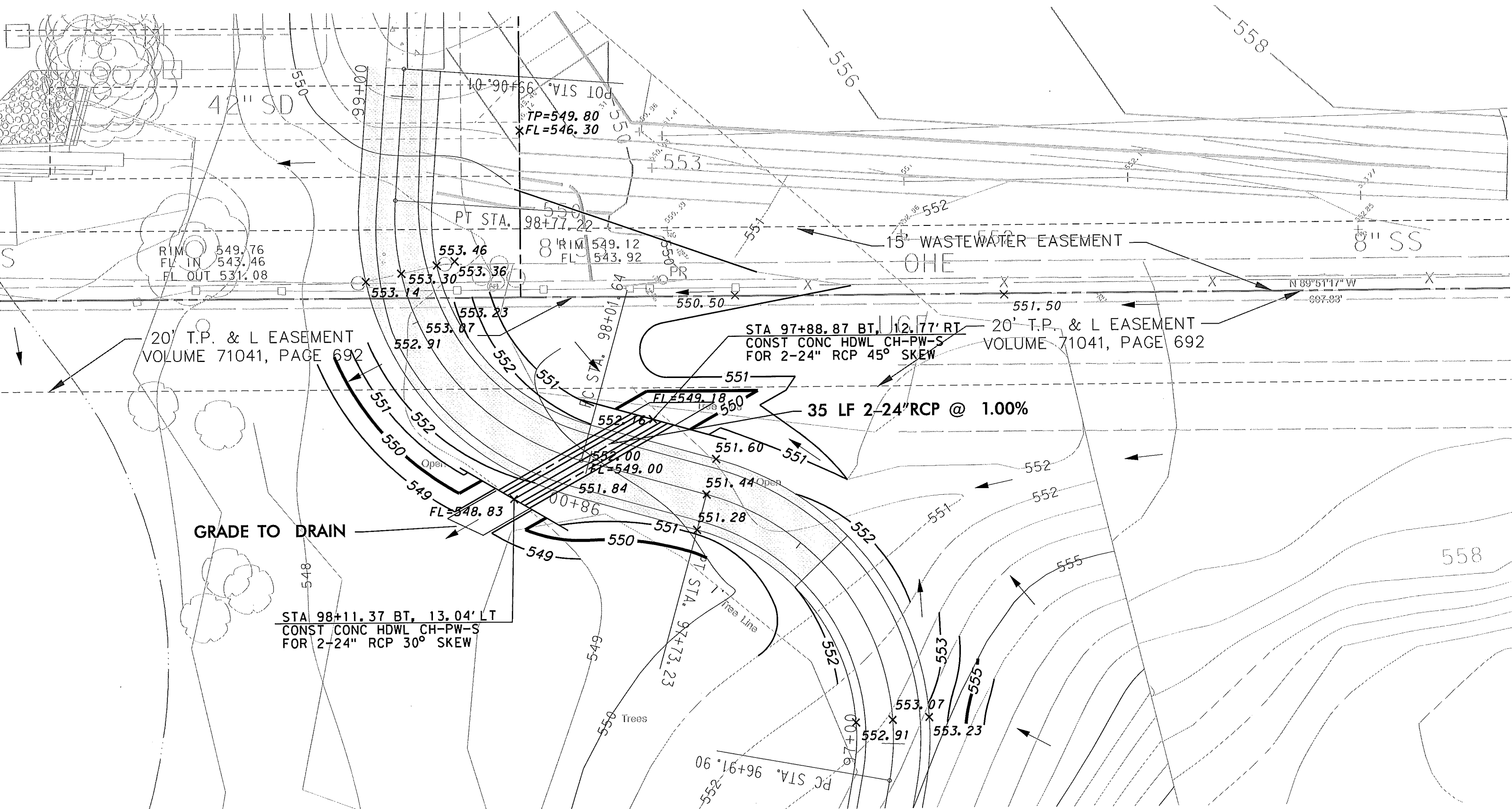
549.83  
 549.86

549.83  
 549.86

549.83  
 549.86

549.83  
 549.86

549.83  
 549.86



42" SD

10°90'66" VIS 10d  
TP=549.80  
\*FL=546.30

RIM 549.76  
FL IN 543.46  
FL OUT 531.08

RIM 549.12  
FL 543.92

15" WASTEWATER EASEMENT

8" SS

20' T.P. & L EASEMENT  
VOLUME 71041, PAGE 692

STA 97+88.87 BT, 12.77' RT  
CONST CONC HDWL CH-PW-S  
FOR 2-24" RCP 45° SKEW

20' T.P. & L EASEMENT  
VOLUME 71041, PAGE 692

35 LF 2-24" RCP @ 1.00%

GRADE TO DRAIN

STA 98+11.37 BT, 13.04' LT  
CONST CONC HDWL CH-PW-S  
FOR 2-24" RCP 30° SKEW

PT STA. 97+73.23

PC STA. 96+91.90

558