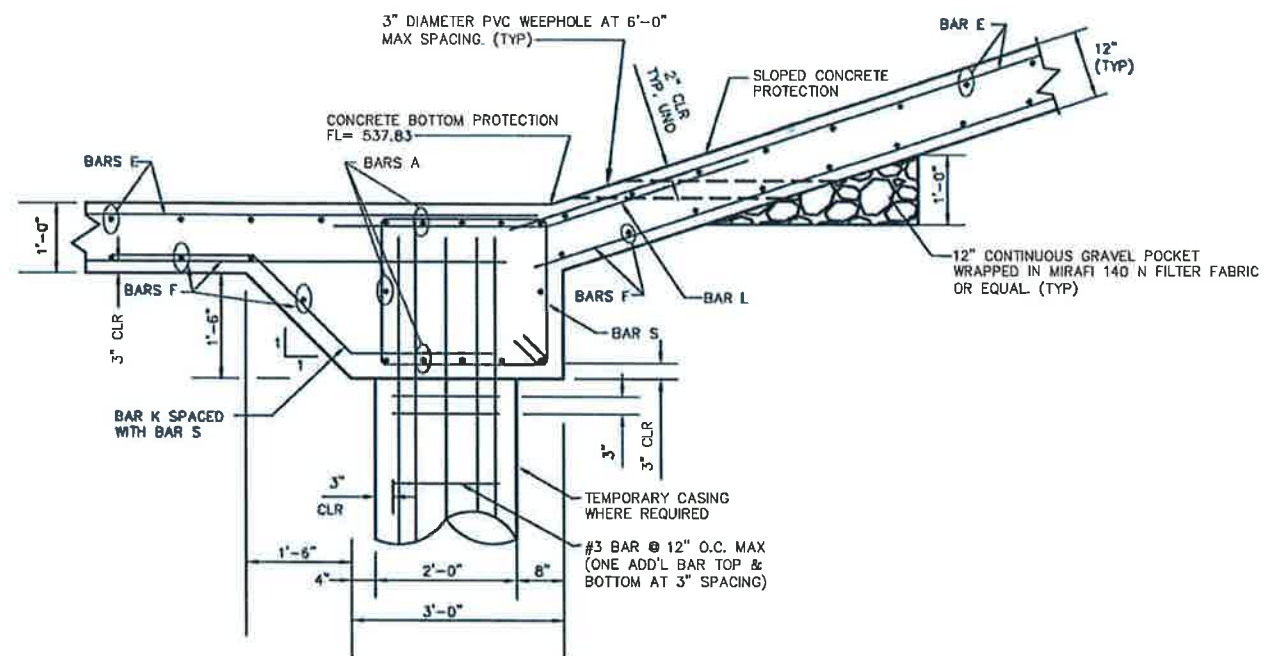
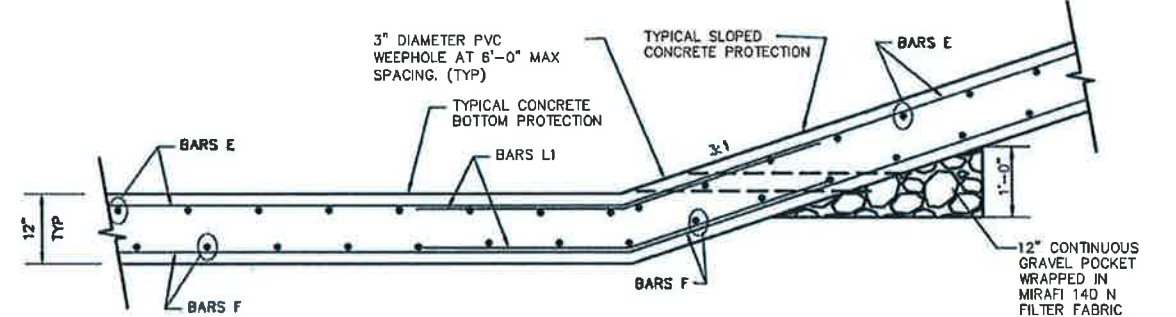


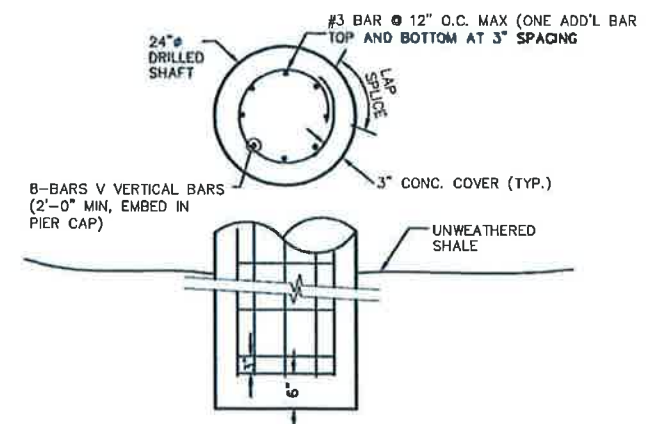
DROP STRUCTURE ELEVATION
SCALE: 1/4" = 1'-0"



DROP STRUCTURE SECTION A-A
SCALE: 3/8" = 1'-0"



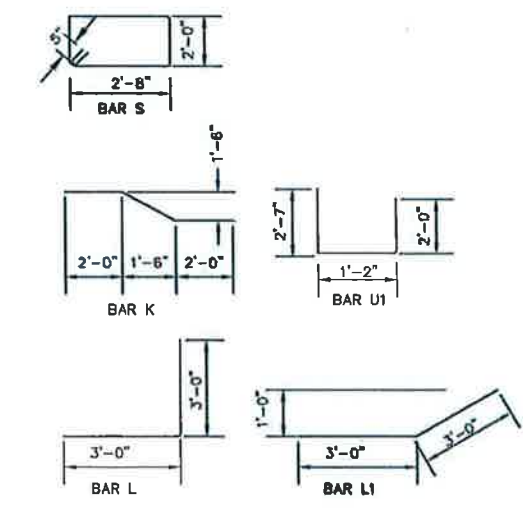
TYPICAL CONCRETE PROTECTION DETAIL
SCALE: 3/8" = 1'-0"



PIER DETAIL
SCALE: 3/8" = 1'-0"

REINFORCING SCHEDULE

BAR	SIZE	SPACING
A	#6	-
B	#4	12" O.C. MAX
E	#8	12" O.C. MAX
F	#6	12" O.C. MAX
K	#6	12" O.C. MAX
L	#6	12" O.C. MAX
L1	#6	12" O.C. MAX
S	#4	SEE ELEVATION
T	#4	12" O.C. MAX
U1	#6	12" O.C. MAX
V	#6	-



NOTES:

1. ALL CONCRETE SHALL BE CLASS C WITH A MINIMUM COMPRESSION STRENGTH OF $f_c = 3600$ PSI AT 28 DAYS.
2. ALL REINFORCING SHALL BE GRADE 60.
3. BARS CAN BE CUT AS NEEDED TO REMAIN A MINIMUM CONCRETE CLEAR COVER OF 3" FOR CONCRETE CAST AGAINST EARTH AND 2" CLEAR COVER OTHERWISE.
4. VERTICAL BARS V IN DRILLED SHAFTS SHALL HAVE A MINIMUM SPLICE LENGTH OF 4'-6" AND A MINIMUM EMBEDMENT OF 2'-0" INTO PIER CAP.
5. DRILLED SHAFTS SHALL PENETRATE INTO UNWEATHERED SHALE A MINIMUM OF 14'-0".
6. CONTRACTOR SHALL USE CASING AS NECESSARY.



revisions	date

NDM
NATHAN D. MAIER
CONSULTING ENGINEERS, INC.
FIRM REGISTRATION NO.: F-356
Two Park Lane Place / 8060 Park Lane / Suite 600
Dallas, Texas 75231 / (214) 739-4741

SLOPE PROTECTION/DROP STRUCTURE AT BELLA LANE VEHICULAR BRIDGE AND STABILIZATION AT THE DOWNSTREAM WEIR
VITRUVIAN PARK
TOWN OF ADDISON, TEXAS

BELLA LANE DROP STRUCTURE STRUCTURAL DETAILS					sheet no. 12 15
design	drawn	scale	date	file name	job number
ADS	NDM	AS NOTED	1-27-12	DETAILS	11-07-037