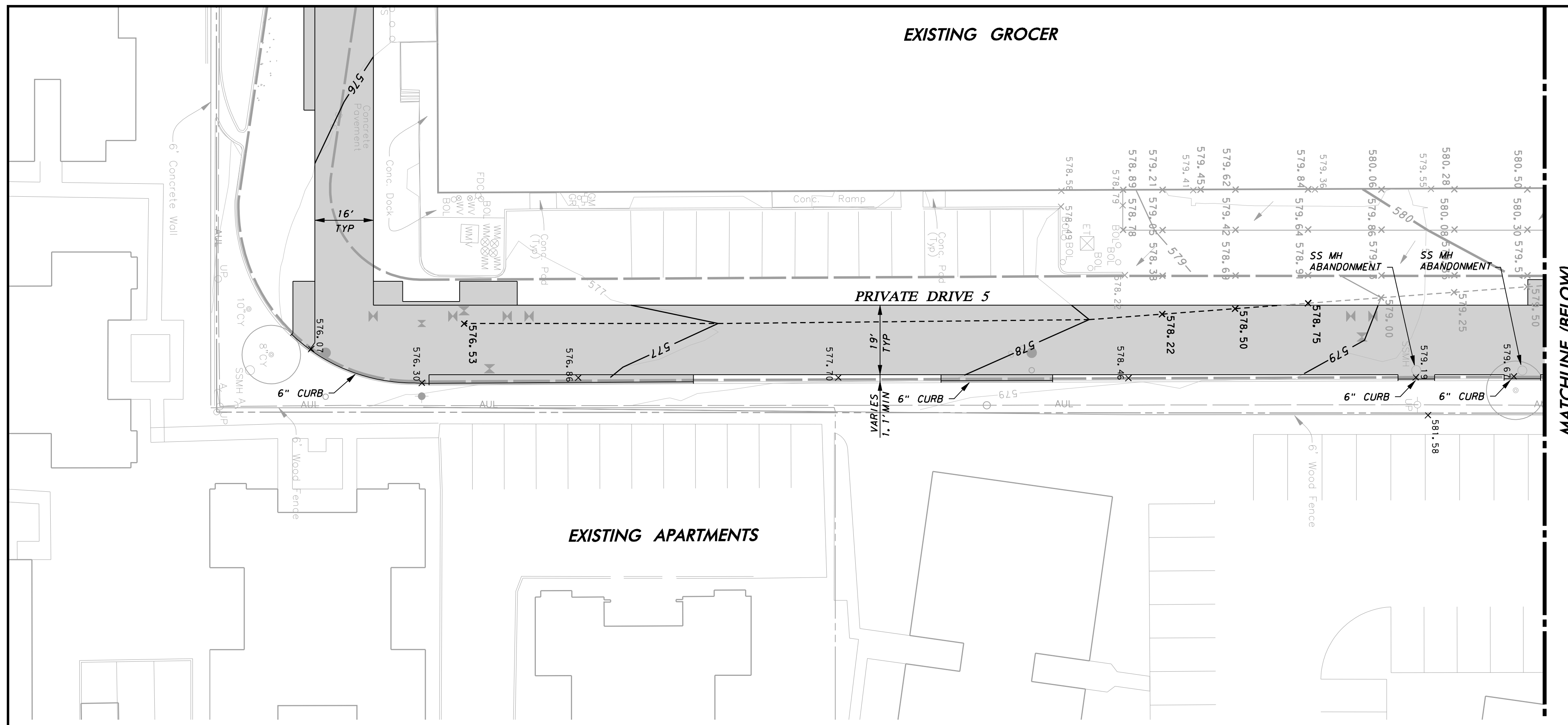


EXISTING GROCE



MATCHLINE (BELOW)

**LEGEND**

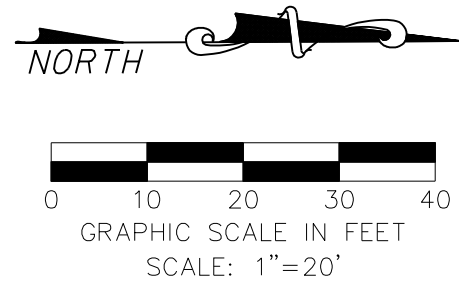
- STREET PAVEMENT:**  
10" 4200 PSI CONCRETE PVMT. W/ #4 BARS @ 24" O.C.E.W. ON 6" COMPACTED SUBGRADE TO 95% AT OR ABOVE OPTIMUM MOISTURE CONTENT. (ASTM D 698)
- HEAVY DUTY PAVEMENT:**  
8" 4200 PSI CONCRETE PVMT. W/ #4 BARS @ 18" O.C.E.W. ON 6" COMPACTED SUBGRADE TO 95% AT OR ABOVE OPTIMUM MOISTURE CONTENT. (ASTM D 698)
- STREETSCAPE PAVEMENT:**  
5" REINFORCED CONCRETE (3000 PSI AT 28 DAYS) W/ #3 BARS @ 18" O.C.E.W. ON 6" COMPACTED SUBGRADE TO 95% AT OR ABOVE OPTIMUM MOISTURE CONTENT. (ASTM D 698) REFERENCE PAVING DETAILS FOR LAYOUT & DIMENSION CONTROL AND FOR CONCRETE PAVER LAYOUTS AND PATTERNS
- SIDEWALK & FLATWORK:**  
4" REINFORCED CONCRETE SIDEWALK FLATWORK (3000 PSI AT 28 DAYS) W/ #3 BARS @ 18" O.C.E.W. ON 6" COMPACTED SUBGRADE TO 95% AT OR ABOVE OPTIMUM MOISTURE CONTENT. (ASTM D 698)

**WARNING**

CONTRACTOR IS TO CONTACT TEXAS ONE-CALL SYSTEM (1-800-245-4545) OR OTHER UTILITY LOCATING SERVICES AT LEAST 48 HOURS PRIOR TO CONSTRUCTION ACTIVITIES. ICON CONSULTING ENGINEERS, INC. IS NOT RESPONSIBLE FOR KNOWING ALL EXISTING UTILITIES IN THE PROJECT AREA NOR FOR DEPICTING THE EXACT LOCATIONS OF UTILITIES ON THESE DRAWINGS.

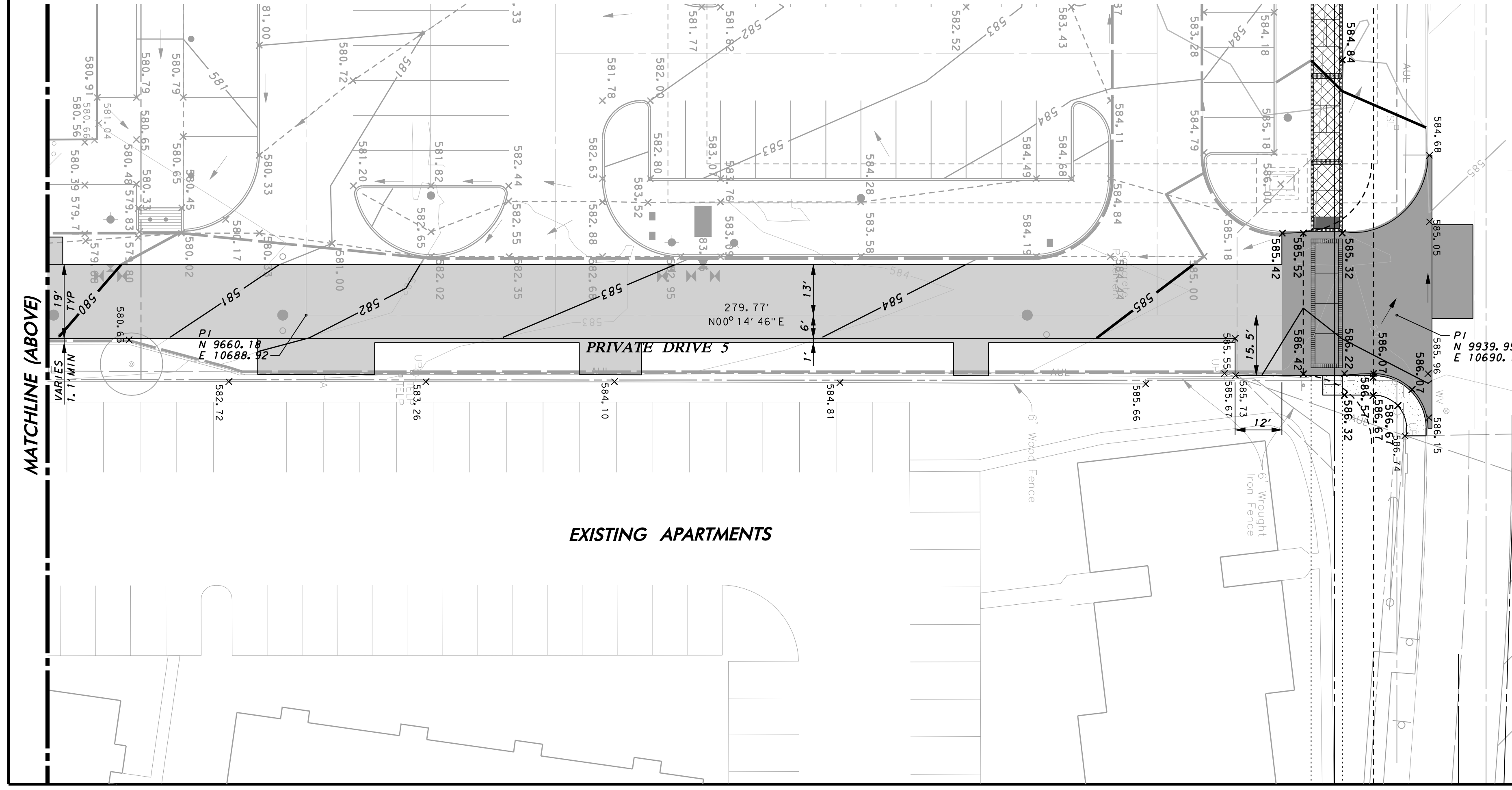
BM #1 REF. ELEVATION = 573.00  
TOWN OF ADDISON MONUMENT NO. 1 BEING A DISK SET IN CONCRETE ON THE NORTH SIDE OF SPRING VALLEY ROAD, APPROX. 147 FEET EAST OF THE CENTERLINE OF MARSH LANE.

BM #2 REF. ELEVATION = 559.47  
SQUARE CUT IN TOP OF CURB, SOUTH MEDIAN END NOSE, MARSH LANE 1127' NORTH OF VITRUVIAN WAY.



SEE SPRING VALLEY PLAN SHEET FOR PAVING IN THIS AREA

SPRING VALLEY ROAD



MATCHLINE (ABOVE)

EXISTING APARTMENTS

NO.	REVISION	BY	DATE

**icon** Consulting Engineers, Inc. 2840 W. Southlake Blvd., Suite 110  
Civil Engineers - Designers - Planners Southlake, Tx 76092 (817) 552-6210  
Engineering Firm Registration Number F-9007

**WATER, SS & PAVING IMPROVEMENTS**  
VITRUVIAN PARK PUBLIC INFRASTRUCTURE BLOCK 500 A  
TOWN OF ADDISON, TEXAS

**PAVING PLAN**  
**SHOPPING CENTER - EAST**

DESIGN	DRAWN	DATE	SCALE	NOTES	Sheet No.
ICE	ICE	JAN 22, 2020	AS NOTED		27

VITRUVIAN PARK BLOCK 500 A PUBLIC INFRASTRUCTURE - PROJECT NO. 5029-05