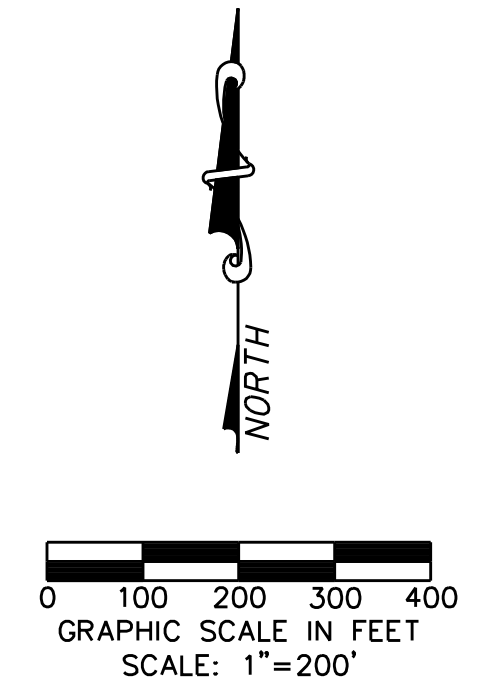


SANITARY SEWER DRAINAGE AREA CALCULATIONS							
Drainage Area	Area (Acres)	Residential Units	Design Flow (Gal/Day)	Infiltration (Gal/Day)	Total Q (Gal/Day)	Acum Q (MGD)	Notes
A-10	1.40	84	37,800	910	38,710	0.0387	Future SS Line 'B-3'
A-11	1.70	102	45,900	1,105	47,005	0.0857	Future SS Line 'B-3'
A-12	0.80	48	21,600	520	22,120	0.1078	Future SS Line 'B-3'
A-18	1.50	90	40,500	975	41,475	0.1493	Future SS Line 'B-3'
A-19	1.50	90	40,500	975	41,475	0.1068	Future SS Line 'B-3'
A-20	1.10	66	29,700	715	30,415	0.0304	SS Line 'B'
A-21	0.90	54	24,300	585	24,885	0.0553	SS Line 'B'
A-22	0.40	24	10,800	260	11,060	0.0664	SS Line 'B'
A-23	0.50	30	13,500	325	13,825	0.0802	SS Line 'B'
OS	2.60	156	70,200	1,690	71,890	0.1521	SS Line 'B'
A-24	1.10	66	29,700	715	30,415	0.1825	SS Line 'B'
A-25	1.20	72	32,400	780	33,180	0.2157	SS Line 'B'
A-26	0.50	30	13,500	325	13,825	0.2295	SS Line 'B'
A-27	0.50	30	13,500	325	13,825	0.2433	SS Line 'B'
A-28	0.20	12	5,400	130	5,530	0.2489	SS Line 'B'
C-1	0.80	48	21,600	520	22,120	0.0221	Future SS Line 'B-2'
C-2	0.50	30	13,500	325	13,825	0.0359	Future SS Line 'B-2'
C-3	0.50	30	13,500	325	13,825	0.0498	Future SS Line 'B-2'
C-4	0.40	24	10,800	260	11,060	0.0608	Future SS Line 'B-2'
C-5	0.20	12	5,400	130	5,530	0.0664	Future SS Line 'B-2'
C-6	0.50	30	13,500	325	13,825	0.0802	Future SS Line 'B-2'
C-7	0.50	30	13,500	325	13,825	0.0940	Future SS Line 'B-2'
C-8	1.10	66	29,700	715	30,415	0.1244	Future SS Line 'B-2'
C-9	1.00	60	27,000	650	27,650	0.1521	Future SS Line 'B-2'
C-10	0.60	36	16,200	390	16,590	0.1687	Future SS Line 'B-2'
A-29	0.30	18	8,100	195	8,295	0.6166	SS Line 'B'
A-30	0.80	48	21,600	520	22,120	0.6387	SS Line 'B'
A-31	1.20	72	32,400	780	33,180	0.6719	SS Line 'B'
A-32	1.30	78	35,100	845	35,945	0.7078	SS Line 'B'
A-33	1.40	84	37,800	910	38,710	0.0387	SS Line 'B-1'
A-34	0.50	30	13,500	325	13,825	0.0525	SS Line 'B-1'
A-35	0.60	36	16,200	390	16,590	0.0691	SS Line 'B-1'
A-36	1.10	66	29,700	715	30,415	0.0995	SS Line 'B-1'
C-15	2.10	126	56,700	1,365	58,065	0.8654	SS Line 'B'
B-25	0.50	30	13,500	325	13,825	0.8793	SS Line 'B'
B-26	0.50	30	13,500	325	13,825	0.8931	SS Line 'B'
B-27	0.50	30	13,500	325	13,825	0.9069	SS Line 'B'
C-18	1.20	72	32,400	780	33,180	0.9401	SS Line 'B'
C-20	2.30	138	62,100	1,495	63,595	1.0037	SS Line 'B'
C-32	1.40	84	37,800	910	38,710	1.0424	SS Line 'B'
Total	37.70	2262	1,017,900	24,505	1,042,405	1.0424	To Existing 10" SS Line



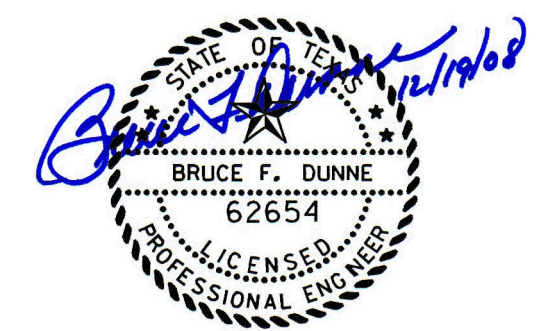
SANITARY SEWER DRAINAGE AREA

**WARNING**

CONTRACTOR IS TO CONTACT TEXAS ONE-CALL SYSTEM (1-800-245-4545) OR OTHER UTILITY LOCATING SERVICES AT LEAST 48 HOURS PRIOR TO CONSTRUCTION ACTIVITIES. ICON CONSULTING ENGINEERS, INC. IS NOT RESPONSIBLE FOR KNOWING ALL EXISTING UTILITIES IN THE PROJECT AREA NOR FOR DEPICTING THE EXACT LOCATIONS OF UTILITIES ON THESE DRAWINGS.

BM #1 REF. ELEVATION = 559.47  
SQUARE CUT IN TOP OF CURB, SOUTH MEDIAN END NOSE, MARSH LANE 1127' NORTH OF BROOKHAVEN CLUB DRIVE.

BM #2 REF. ELEVATION = 547.84  
SQUARE CUT IN TOP OF CURB, NORTH MEDIAN END NOSE, AT INTERSECTION OF BROOKHAVEN CLUB DRIVE AND MARSH LANE.



NO.	REVISION	BY	DATE

**Addison!** TOWN OF ADDISON  
DALLAS COUNTY, TEXAS

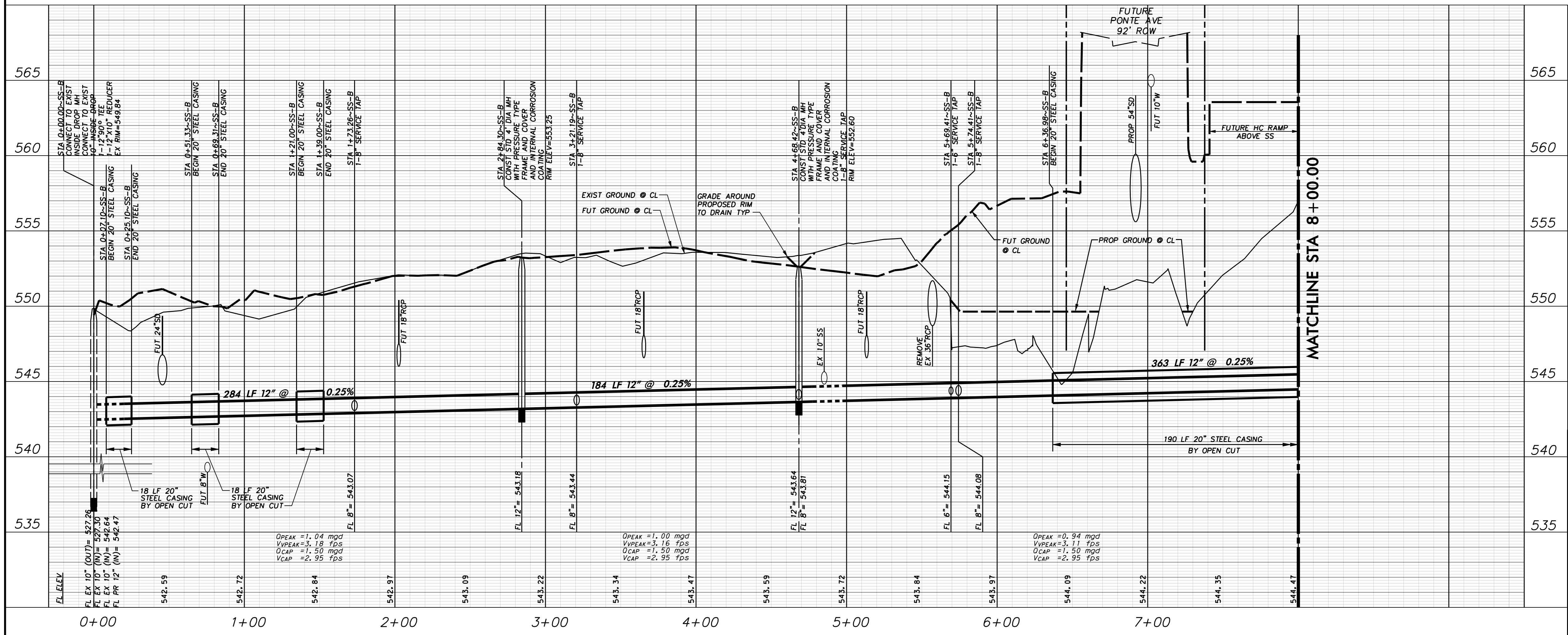
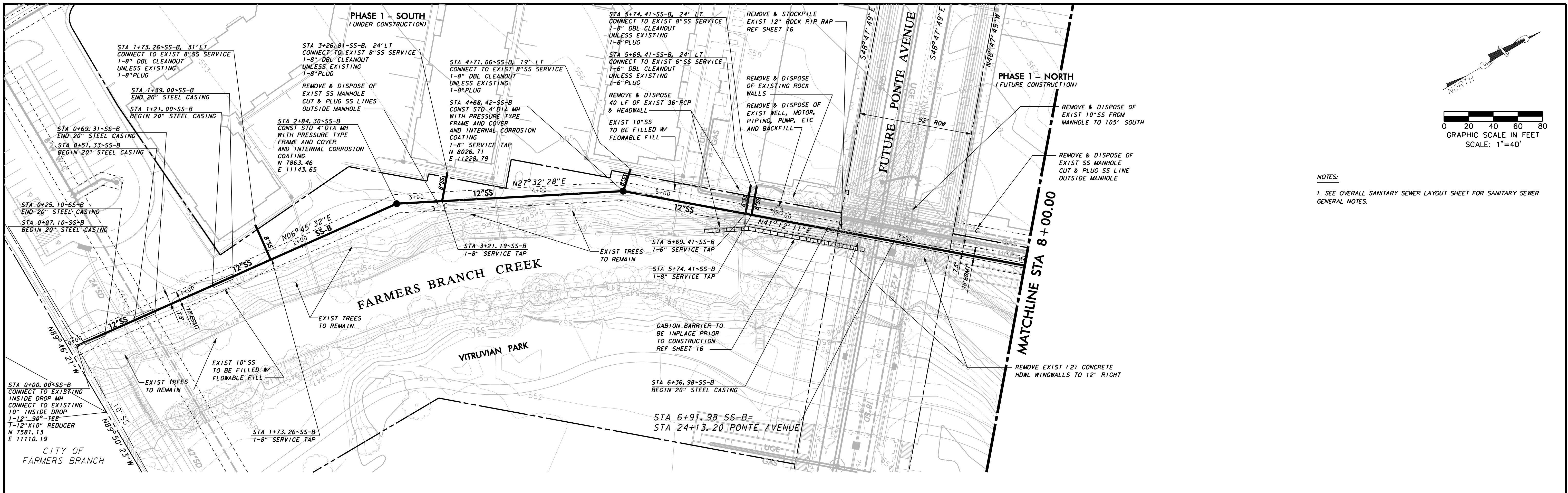
WATER, SANITARY SEWER & STORM DRAIN  
BROOKHAVEN CLUB DR, PONTE AVE & VITRUVIAN PARK

**SANITARY SEWER DRAINAGE AREA MAP**

**icon** Consulting Engineers, Inc. 250 W. Southlake Blvd., Suite 117  
Civil Engineers - Designers - Planners Southlake, Tx 76092 (817) 552-6210

PROJECT	DESIGN	DRAWN	DATE	FILE	SHEET
5029-01	JAM	SAM	OCT 14, 2008	PW #2008-009	11

WATER, SANITARY SEWER, & STORM DRAIN IMPROVEMENTS - BROOKHAVEN CLUB DRIVE, PONTE AVENUE & VITRUVIAN PARK



**WARNING**

CONTRACTOR IS TO CONTACT TEXAS ONE-CALL SYSTEM (1-800-245-4545) OR OTHER UTILITY LOCATING SERVICES AT LEAST 48 HOURS PRIOR TO CONSTRUCTION ACTIVITIES. ICON CONSULTING ENGINEERS, INC. IS NOT RESPONSIBLE FOR KNOWING ALL EXISTING UTILITIES IN THE PROJECT AREA NOR FOR DEPICTING THE EXACT LOCATIONS OF UTILITIES ON THESE DRAWINGS.

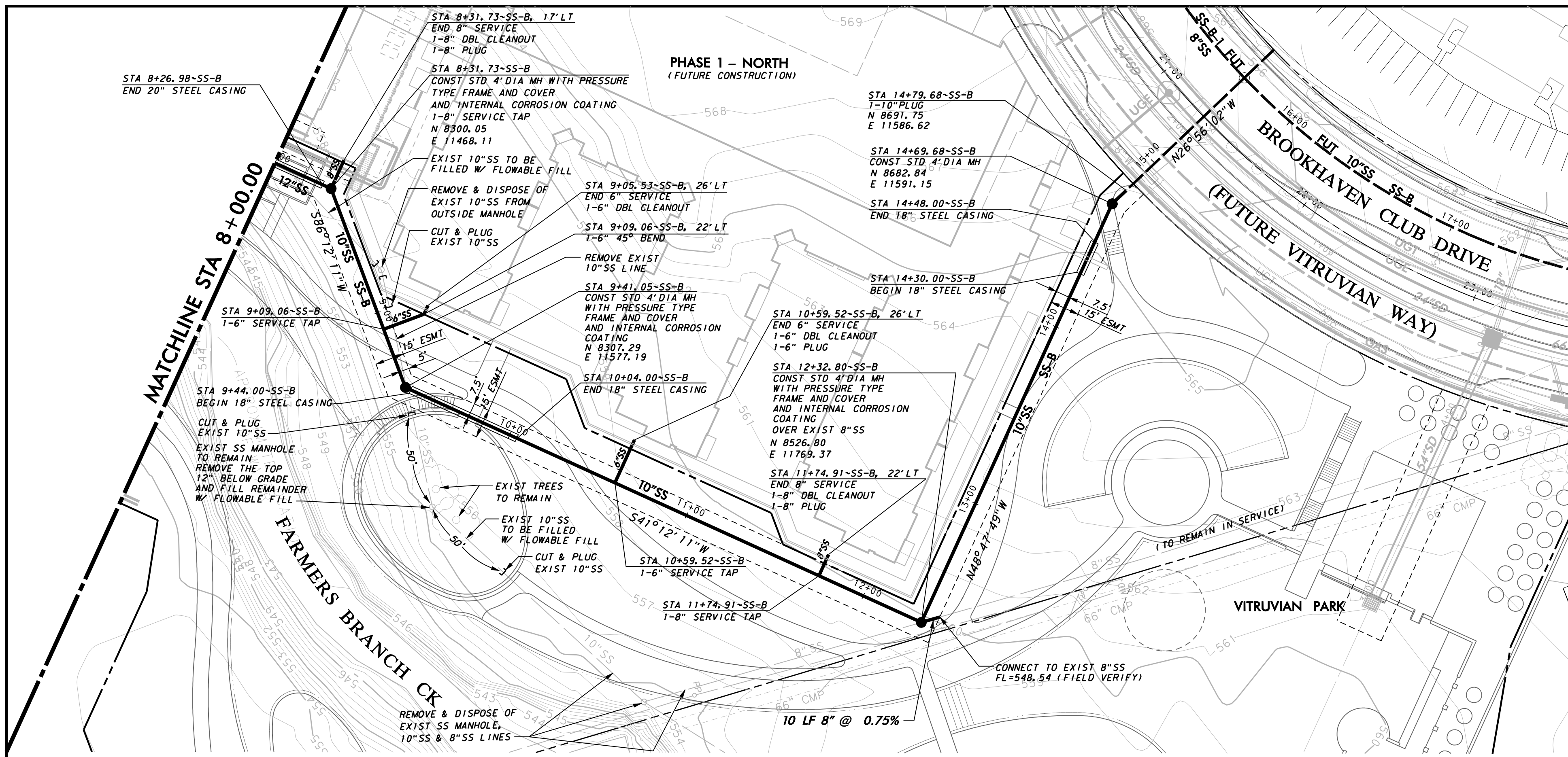
BM #1 REF. ELEVATION = 559.47  
SQUARE CUT IN TOP OF CURB, SOUTH MEDIAN END NOSE, MARSH LANE 1127' NORTH OF BROOKHAVEN CLUB DRIVE.

BM #2 REF. ELEVATION = 547.84  
SQUARE CUT IN TOP OF CURB, NORTH MEDIAN END NOSE, AT INTERSECTION OF BROOKHAVEN CLUB DRIVE AND MARSH LANE.

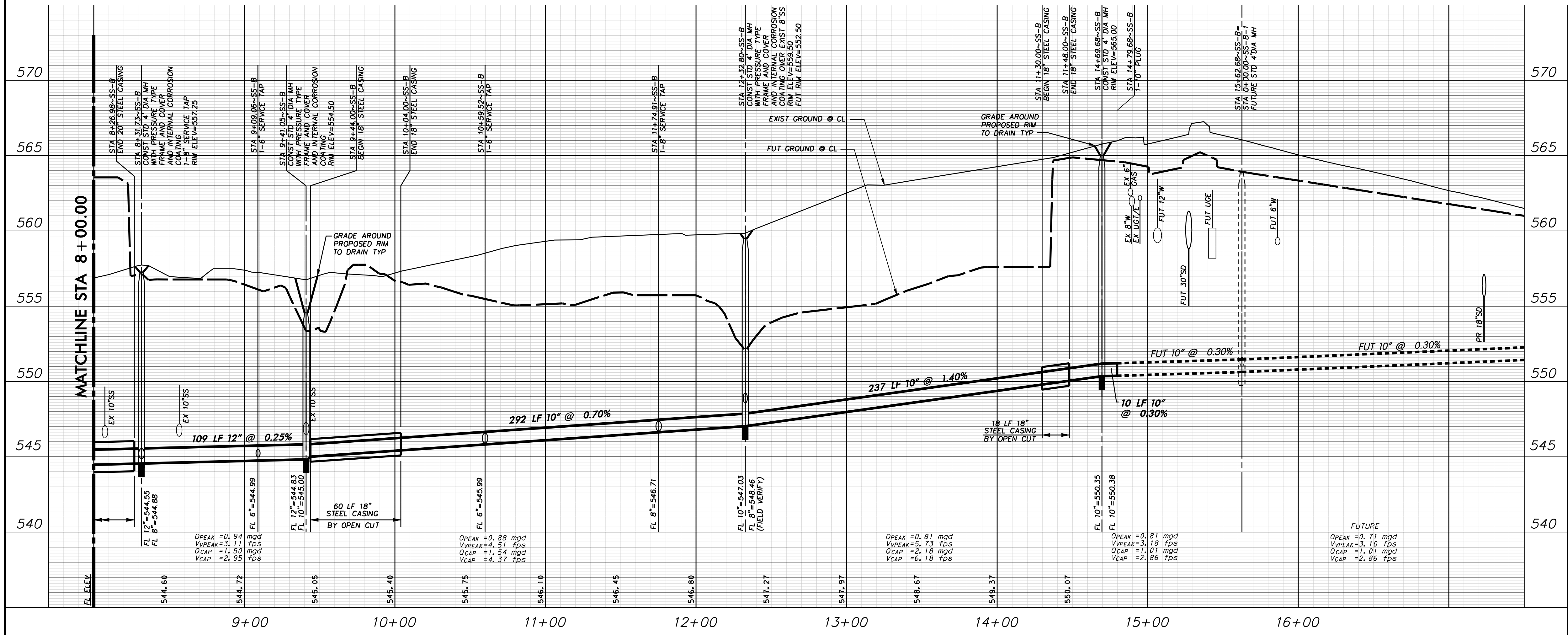
PROFILE SCALE:  
0 20 40 60 80  
SCALE: 1" = 40' HORIZ  
0 2 4 6 8  
SCALE: 1" = 4' VERT

1		ADDED STEEL CASING	11/12/08
NO.	REVISION	BY	DATE
<b>TOWN OF ADDISON</b> DALLAS COUNTY, TEXAS			
<b>WATER, SANITARY SEWER &amp; STORM DRAIN</b> BROOKHAVEN CLUB DR, PONTE AVE & VITRUVIAN PARK			
<b>SANITARY SEWER PLAN &amp; PROFILE~SS-B</b> STA. 0+00.00 TO STA. 8+00.00			
<b>icon</b> Consulting Engineers, Inc. Civil Engineers - Designers - Planners		250 W. Southlake Blvd., Suite 117 Southlake, Tx 76092 (817) 552-6210	
PROJECT	DESIGN	DRAWN	DATE
5029-01	JAM	SAM	OCT 14, 2008
FILE	DATE	FILE	SHEET
PW #2008-009			12

WATER, SANITARY SEWER, & STORM DRAIN IMPROVEMENTS - BROOKHAVEN CLUB DRIVE, PONTE AVENUE & VITRUVIAN PARK



NOTES:  
 1. SEE OVERALL SANITARY SEWER LAYOUT SHEET FOR SANITARY SEWER GENERAL NOTES.



**WARNING**  
 CONTRACTOR IS TO CONTACT TEXAS ONE-CALL SYSTEM (1-800-245-4545) OR OTHER UTILITY LOCATING SERVICES AT LEAST 48 HOURS PRIOR TO CONSTRUCTION ACTIVITIES. ICON CONSULTING ENGINEERS, INC. IS NOT RESPONSIBLE FOR KNOWING ALL EXISTING UTILITIES IN THE PROJECT AREA NOR FOR DEPICTING THE EXACT LOCATIONS OF UTILITIES ON THESE DRAWINGS.

BM #1 REF. ELEVATION = 559.47  
 SQUARE CUT IN TOP OF CURB, SOUTH MEDIAN END NOSE, MARSH LANE  
 1127' NORTH OF BROOKHAVEN CLUB DRIVE.

BM #2 REF. ELEVATION = 547.84  
 SQUARE CUT IN TOP OF CURB, NORTH MEDIAN END NOSE, AT INTERSECTION OF  
 BROOKHAVEN CLUB DRIVE AND MARSH LANE.

PROFILE SCALE:  
 0 20 40 60 80  
 SCALE: 1"=40' HORIZ  
 0 2 4 6 8  
 SCALE: 1"=4' VERT

NO.	REVISION	BY	DATE

**Addison!** TOWN OF ADDISON  
 DALLAS COUNTY, TEXAS

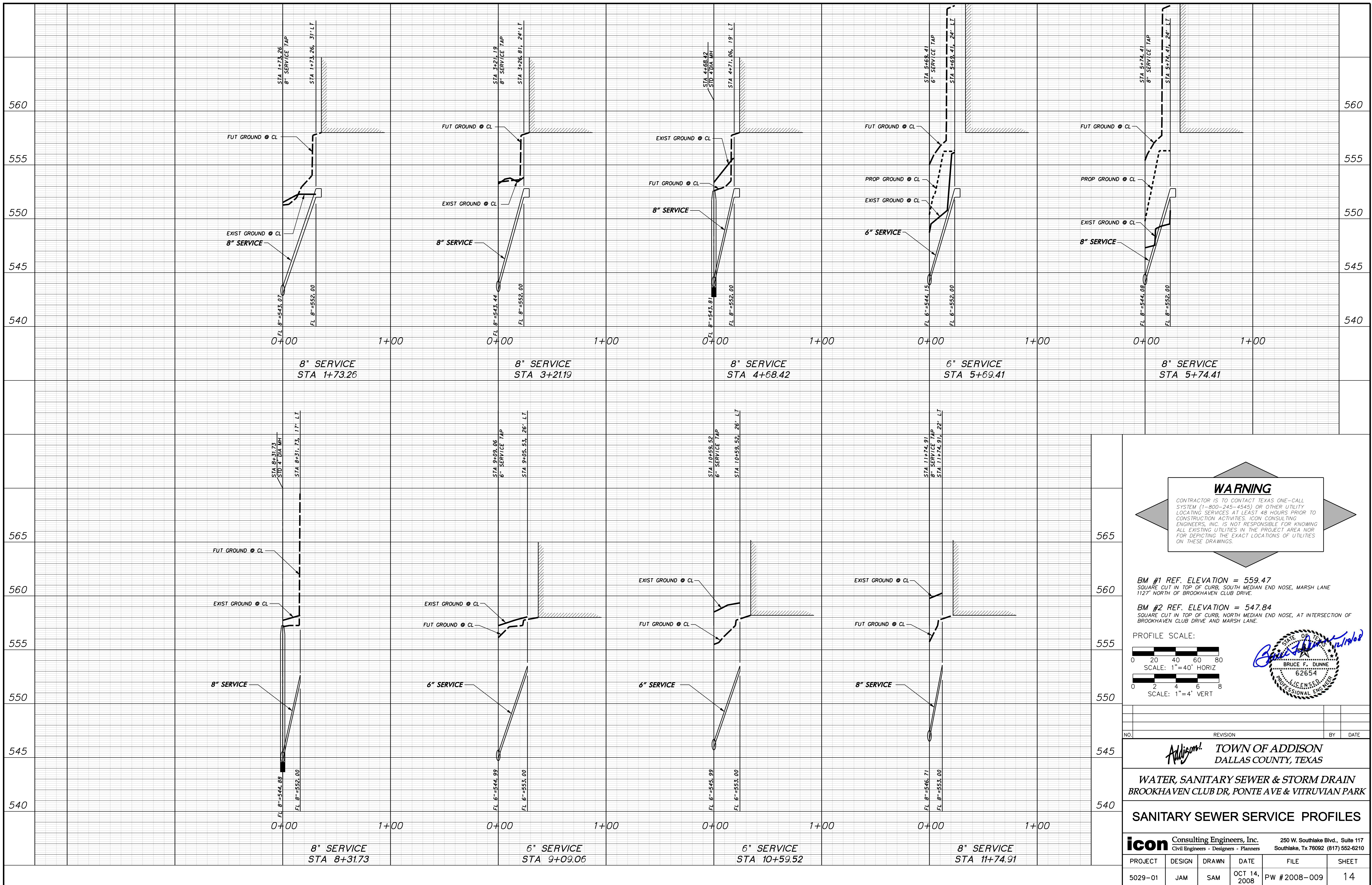
WATER, SANITARY SEWER & STORM DRAIN  
 BROOKHAVEN CLUB DR, PONTE AVE & VITRUVIAN PARK

**SANITARY SEWER PLAN & PROFILE~SS-B**  
 STA. 8+00.00 TO STA. 14+61.32

**icon** Consulting Engineers, Inc. 250 W. Southlake Blvd., Suite 117  
 Civil Engineers - Designers - Planners Southlake, TX 76092 (817) 552-6210

PROJECT	DESIGN	DRAWN	DATE	FILE	SHEET
5029-01	JAM	SAM	OCT 14, 2008	PW #2008-009	13

WATER, SANITARY SEWER, & STORM DRAIN IMPROVEMENTS - BROOKHAVEN CLUB DRIVE, PONTE AVENUE & VITRUVIAN PARK

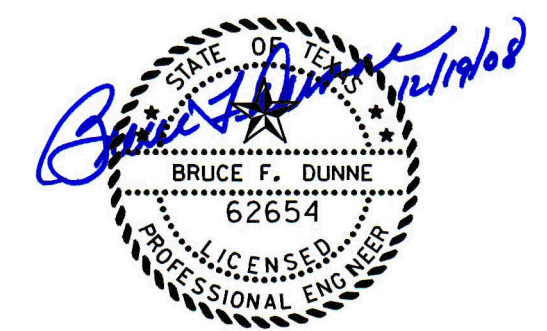
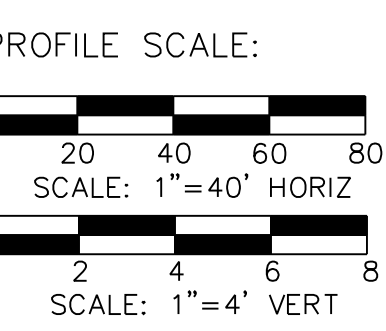


**WARNING**

CONTRACTOR IS TO CONTACT TEXAS ONE-CALL SYSTEM (1-800-245-4545) OR OTHER UTILITY LOCATING SERVICES AT LEAST 48 HOURS PRIOR TO CONSTRUCTION ACTIVITIES. ICON CONSULTING ENGINEERS, INC. IS NOT RESPONSIBLE FOR KNOWING ALL EXISTING UTILITIES IN THE PROJECT AREA NOR FOR DEPICTING THE EXACT LOCATIONS OF UTILITIES ON THESE DRAWINGS.

BM #1 REF. ELEVATION = 559.47  
 SQUARE CUT IN TOP OF CURB, SOUTH MEDIAN END NOSE, MARSH LANE  
 1127' NORTH OF BROOKHAVEN CLUB DRIVE.

BM #2 REF. ELEVATION = 547.84  
 SQUARE CUT IN TOP OF CURB, NORTH MEDIAN END NOSE, AT INTERSECTION OF  
 BROOKHAVEN CLUB DRIVE AND MARSH LANE.



**TOWN OF ADDISON**  
 DALLAS COUNTY, TEXAS

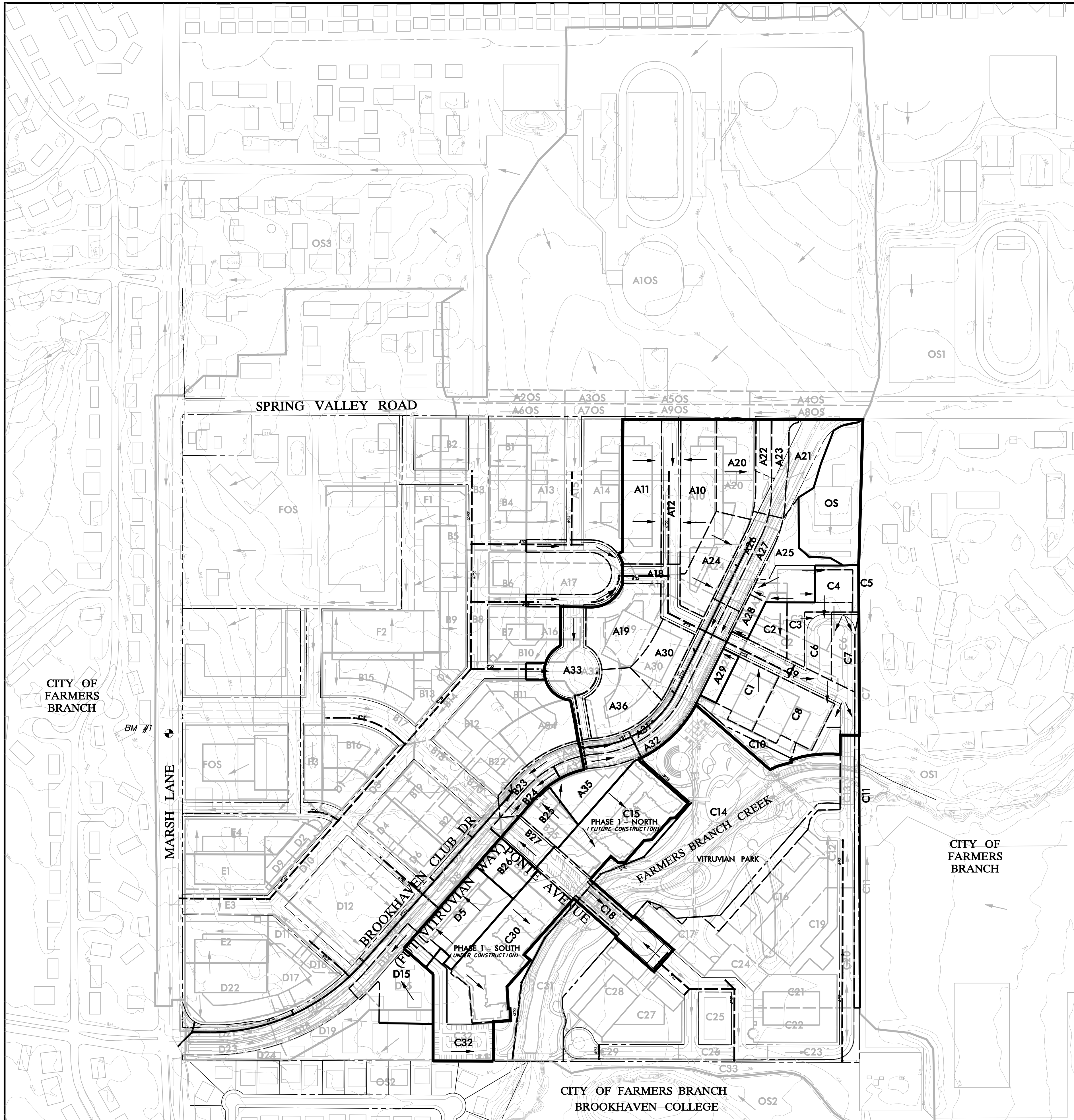
**WATER, SANITARY SEWER & STORM DRAIN**  
 BROOKHAVEN CLUB DR, PONTE AVE & VITRUVIAN PARK

**SANITARY SEWER SERVICE PROFILES**

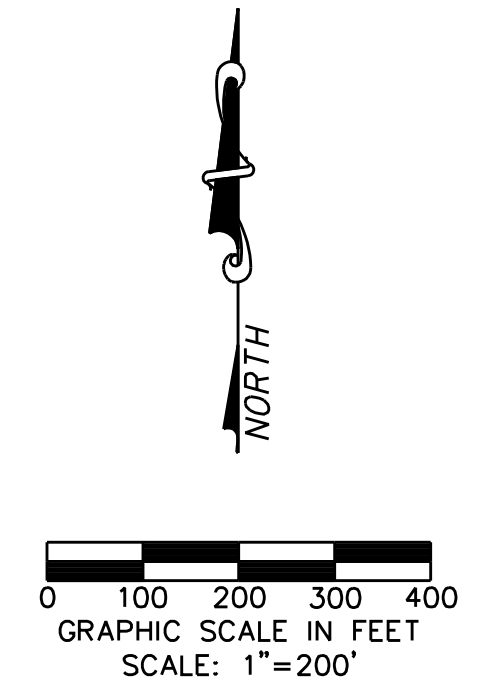
**icon** Consulting Engineers, Inc. 250 W. Southlake Blvd., Suite 117  
 Civil Engineers - Designers - Planners Southlake, Tx 76092 (817) 552-6210

PROJECT	DESIGN	DRAWN	DATE	FILE	SHEET
5029-01	JAM	SAM	OCT 14, 2008	PW #2008-009	14

WATER, SANITARY SEWER, & STORM DRAIN IMPROVEMENTS - BROOKHAVEN CLUB DRIVE, PONTE AVENUE & VITRUVIAN PARK



SANITARY SEWER DRAINAGE AREA CALCULATIONS							
Drainage Area	Area (Acres)	Residential Units	Design Flow (Gal/Day)	Infiltration (Gal/Day)	Total Q (Gal/Day)	Acum Q (MGD)	Notes
A-10	1.40	84	37,800	910	38,710	0.0387	Future SS Line 'B-3'
A-11	1.70	102	45,900	1,105	47,005	0.0857	Future SS Line 'B-3'
A-12	0.80	48	21,600	520	22,120	0.1078	Future SS Line 'B-3'
A-18	1.50	90	40,500	975	41,475	0.1493	Future SS Line 'B-3'
A-19	1.50	90	40,500	975	41,475	0.1068	Future SS Line 'B-3'
A-20	1.10	66	29,700	715	30,415	0.0304	SS Line 'B'
A-21	0.90	54	24,300	585	24,885	0.0553	SS Line 'B'
A-22	0.40	24	10,800	260	11,060	0.0664	SS Line 'B'
A-23	0.50	30	13,500	325	13,825	0.0802	SS Line 'B'
OS	2.60	156	70,200	1,690	71,890	0.1521	SS Line 'B'
A-24	1.10	66	29,700	715	30,415	0.1825	SS Line 'B'
A-25	1.20	72	32,400	780	33,180	0.2157	SS Line 'B'
A-26	0.50	30	13,500	325	13,825	0.2295	SS Line 'B'
A-27	0.50	30	13,500	325	13,825	0.2433	SS Line 'B'
A-28	0.20	12	5,400	130	5,530	0.2489	SS Line 'B'
C-1	0.80	48	21,600	520	22,120	0.0221	Future SS Line 'B-2'
C-2	0.50	30	13,500	325	13,825	0.0359	Future SS Line 'B-2'
C-3	0.50	30	13,500	325	13,825	0.0498	Future SS Line 'B-2'
C-4	0.40	24	10,800	260	11,060	0.0608	Future SS Line 'B-2'
C-5	0.20	12	5,400	130	5,530	0.0664	Future SS Line 'B-2'
C-6	0.50	30	13,500	325	13,825	0.0802	Future SS Line 'B-2'
C-7	0.50	30	13,500	325	13,825	0.0940	Future SS Line 'B-2'
C-8	1.10	66	29,700	715	30,415	0.1244	Future SS Line 'B-2'
C-9	1.00	60	27,000	650	27,650	0.1521	Future SS Line 'B-2'
C-10	0.60	36	16,200	390	16,590	0.1687	Future SS Line 'B-2'
A-29	0.30	18	8,100	195	8,295	0.6166	SS Line 'B'
A-30	0.80	48	21,600	520	22,120	0.6387	SS Line 'B'
A-31	1.20	72	32,400	780	33,180	0.6719	SS Line 'B'
A-32	1.30	78	35,100	845	35,945	0.7078	SS Line 'B'
A-33	1.40	84	37,800	910	38,710	0.0387	SS Line 'B-1'
A-34	0.50	30	13,500	325	13,825	0.0525	SS Line 'B-1'
A-35	0.60	36	16,200	390	16,590	0.0691	SS Line 'B-1'
A-36	1.10	66	29,700	715	30,415	0.0995	SS Line 'B-1'
C-15	2.10	126	56,700	1,365	58,065	0.8654	SS Line 'B'
B-25	0.50	30	13,500	325	13,825	0.8793	SS Line 'B'
B-26	0.50	30	13,500	325	13,825	0.8931	SS Line 'B'
B-27	0.50	30	13,500	325	13,825	0.9069	SS Line 'B'
C-18	1.20	72	32,400	780	33,180	0.9401	SS Line 'B'
C-30	2.30	138	62,100	1,495	63,595	1.0037	SS Line 'B'
C-32	1.40	84	37,800	910	38,710	1.0424	SS Line 'B'
Total	37.70	2262	1,017,900	24,505	1,042,405	1.0424	To Existing 10" SS Line



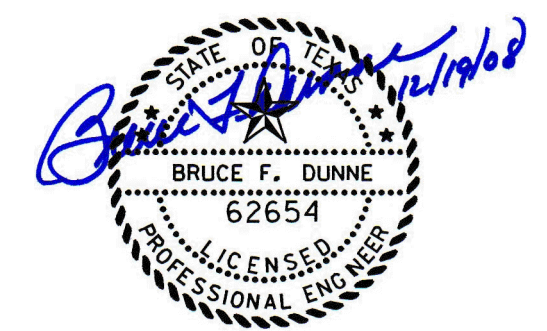
SANITARY SEWER DRAINAGE AREA

**WARNING**

CONTRACTOR IS TO CONTACT TEXAS ONE-CALL SYSTEM (1-800-245-4545) OR OTHER UTILITY LOCATING SERVICES AT LEAST 48 HOURS PRIOR TO CONSTRUCTION ACTIVITIES. ICON CONSULTING ENGINEERS, INC. IS NOT RESPONSIBLE FOR KNOWING ALL EXISTING UTILITIES IN THE PROJECT AREA NOR FOR DEPICTING THE EXACT LOCATIONS OF UTILITIES ON THESE DRAWINGS.

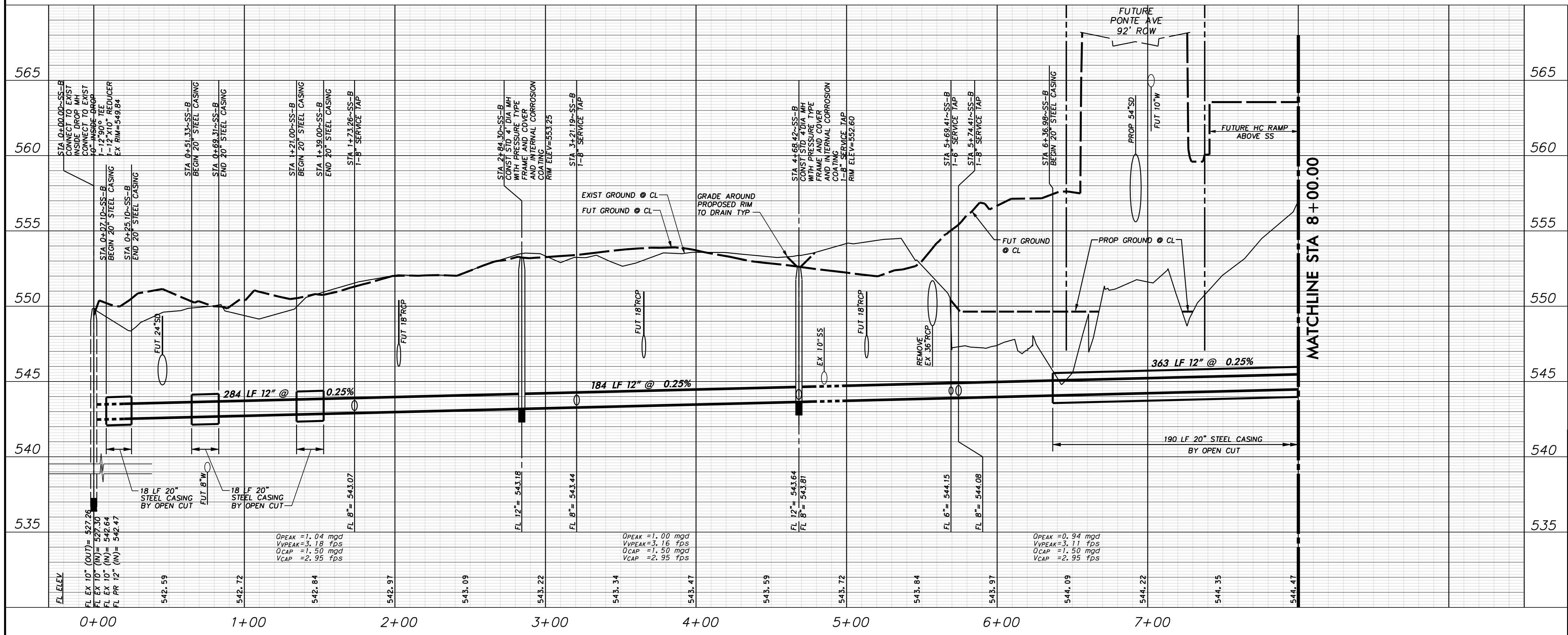
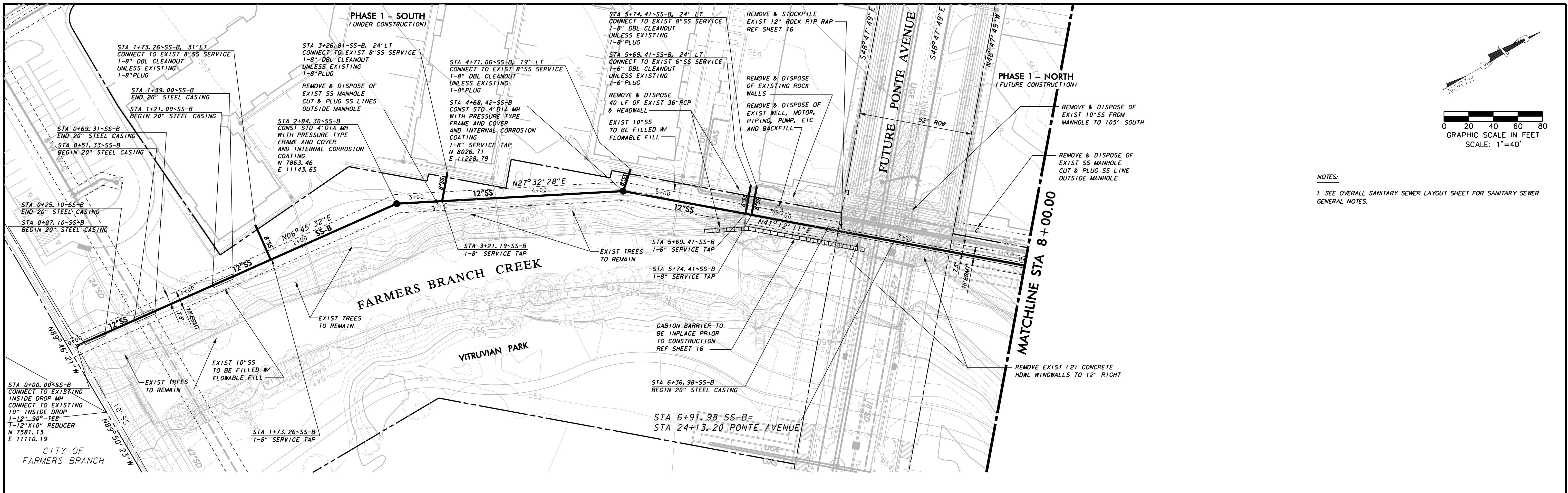
BM #1 REF. ELEVATION = 559.47  
 SQUARE CUT IN TOP OF CURB, SOUTH MEDIAN END NOSE, MARSH LANE  
 1127' NORTH OF BROOKHAVEN CLUB DRIVE.

BM #2 REF. ELEVATION = 547.84  
 SQUARE CUT IN TOP OF CURB, NORTH MEDIAN END NOSE, AT INTERSECTION OF  
 BROOKHAVEN CLUB DRIVE AND MARSH LANE.



NO.	REVISION	BY	DATE
<b>TOWN OF ADDISON</b> DALLAS COUNTY, TEXAS			
<b>WATER, SANITARY SEWER &amp; STORM DRAIN</b> <b>BROOKHAVEN CLUB DR, PONTA AVE &amp; VITRUVIAN PARK</b>			
<b>SANITARY SEWER DRAINAGE AREA MAP</b>			
<b>icon</b> Consulting Engineers, Inc. Civil Engineers - Designers - Planners		250 W. Southlake Blvd., Suite 117 Southlake, Tx 76092 (817) 552-6210	
PROJECT	DESIGN	DRAWN	DATE
5029-01	JAM	SAM	OCT 14, 2008
FILE	SHEET		
PW #2008-009	11		

WATER, SANITARY SEWER, & STORM DRAIN IMPROVEMENTS - BROOKHAVEN CLUB DRIVE, PONTA AVENUE & VITRUVIAN PARK



**WARNING**

CONTRACTOR IS TO CONTACT TEXAS ONE-CALL SYSTEM (1-800-245-4545) OR OTHER UTILITY LOCATING SERVICES AT LEAST 48 HOURS PRIOR TO CONSTRUCTION ACTIVITIES. ICON CONSULTING ENGINEERS, INC. IS NOT RESPONSIBLE FOR KNOWING ALL EXISTING UTILITIES IN THE PROJECT AREA NOR FOR DEPICTING THE EXACT LOCATIONS OF UTILITIES ON THESE DRAWINGS.

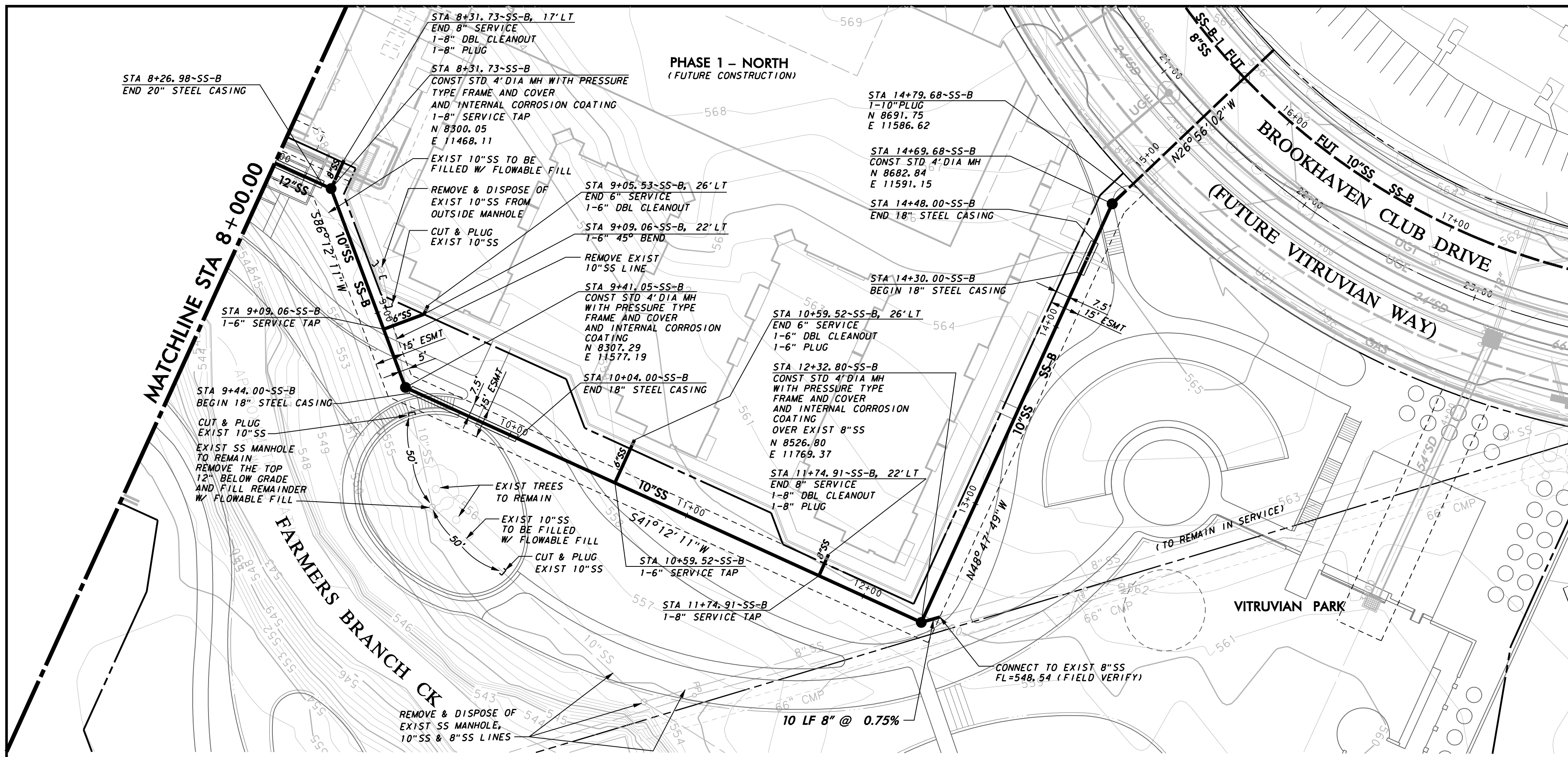
BM #1 REF. ELEVATION = 559.47  
SQUARE CUT IN TOP OF CURB, SOUTH MEDIAN END NOSE, MARSH LANE 1127' NORTH OF BROOKHAVEN CLUB DRIVE.

BM #2 REF. ELEVATION = 547.84  
SQUARE CUT IN TOP OF CURB, NORTH MEDIAN END NOSE, AT INTERSECTION OF BROOKHAVEN CLUB DRIVE AND MARSH LANE.

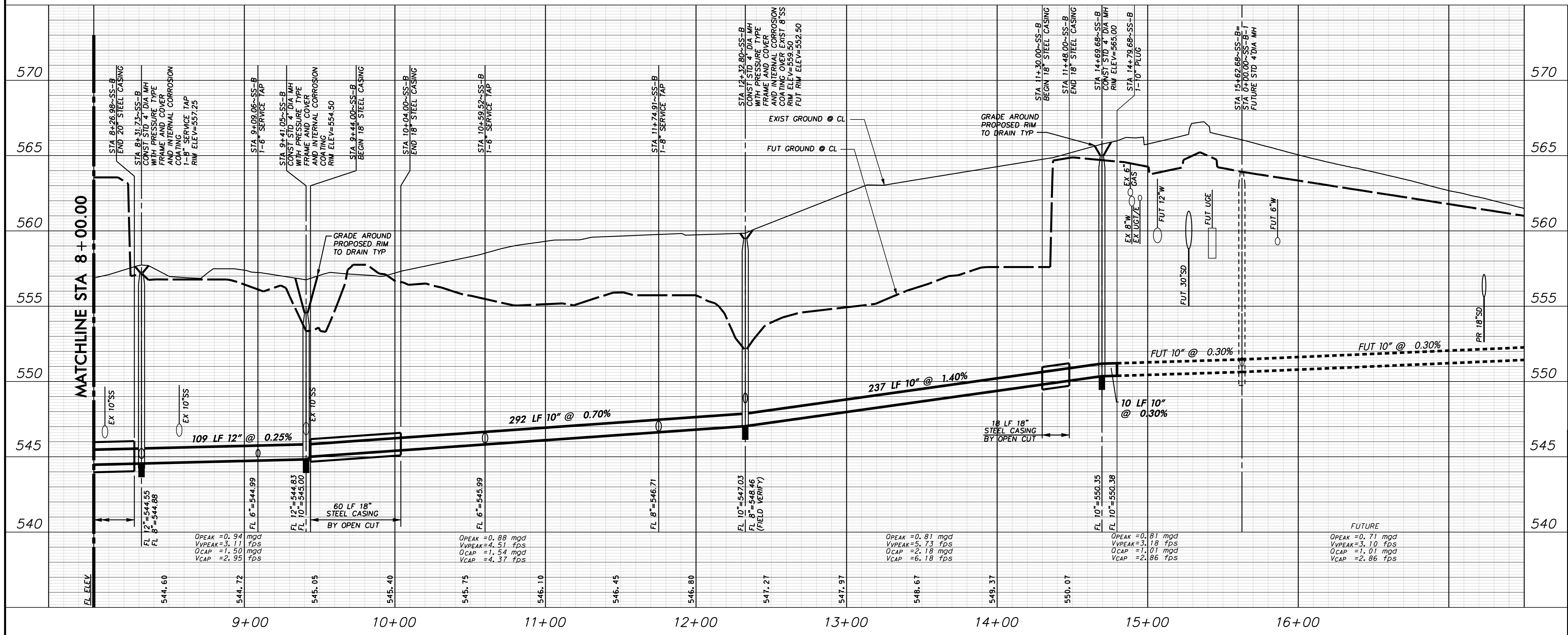
PROFILE SCALE:  
0 20 40 60 80  
SCALE: 1" = 40' HORIZ  
0 2 4 6 8  
SCALE: 1" = 4' VERT

1		ADDED STEEL CASING	11/12/08
NO.	REVISION	BY	DATE
<b>TOWN OF ADDISON</b> DALLAS COUNTY, TEXAS			
<b>WATER, SANITARY SEWER &amp; STORM DRAIN</b> BROOKHAVEN CLUB DR, PONTE AVE & VITRUVIAN PARK			
<b>SANITARY SEWER PLAN &amp; PROFILE~SS-B</b> STA. 0+00.00 TO STA. 8+00.00			
<b>icon</b> Consulting Engineers, Inc. Civil Engineers - Designers - Planners		250 W. Southlake Blvd., Suite 117 Southlake, Tx 76092 (817) 552-6210	
PROJECT	DESIGN	DRAWN	DATE
5029-01	JAM	SAM	OCT 14, 2008
FILE	DATE	FILE	SHEET
PW #2008-009			12

WATER, SANITARY SEWER, & STORM DRAIN IMPROVEMENTS - BROOKHAVEN CLUB DRIVE, PONTE AVENUE & VITRUVIAN PARK



NOTES:  
 1. SEE OVERALL SANITARY SEWER LAYOUT SHEET FOR SANITARY SEWER GENERAL NOTES.



**WARNING**  
 CONTRACTOR IS TO CONTACT TEXAS ONE-CALL SYSTEM (1-800-245-4545) OR OTHER UTILITY LOCATING SERVICES AT LEAST 48 HOURS PRIOR TO CONSTRUCTION ACTIVITIES. ICON CONSULTING ENGINEERS, INC. IS NOT RESPONSIBLE FOR KNOWING ALL EXISTING UTILITIES IN THE PROJECT AREA NOR FOR DEPICTING THE EXACT LOCATIONS OF UTILITIES ON THESE DRAWINGS.

BM #1 REF. ELEVATION = 559.47  
 SQUARE CUT IN TOP OF CURB, SOUTH MEDIAN END NOSE, MARSH LANE  
 1127' NORTH OF BROOKHAVEN CLUB DRIVE.

BM #2 REF. ELEVATION = 547.84  
 SQUARE CUT IN TOP OF CURB, NORTH MEDIAN END NOSE, AT INTERSECTION OF BROOKHAVEN CLUB DRIVE AND MARSH LANE.

PROFILE SCALE:  
 0 20 40 60 80  
 SCALE: 1"=40' HORIZ  
 0 2 4 6 8  
 SCALE: 1"=4' VERT

NO.	REVISION	BY	DATE

**Addison!** TOWN OF ADDISON  
 DALLAS COUNTY, TEXAS

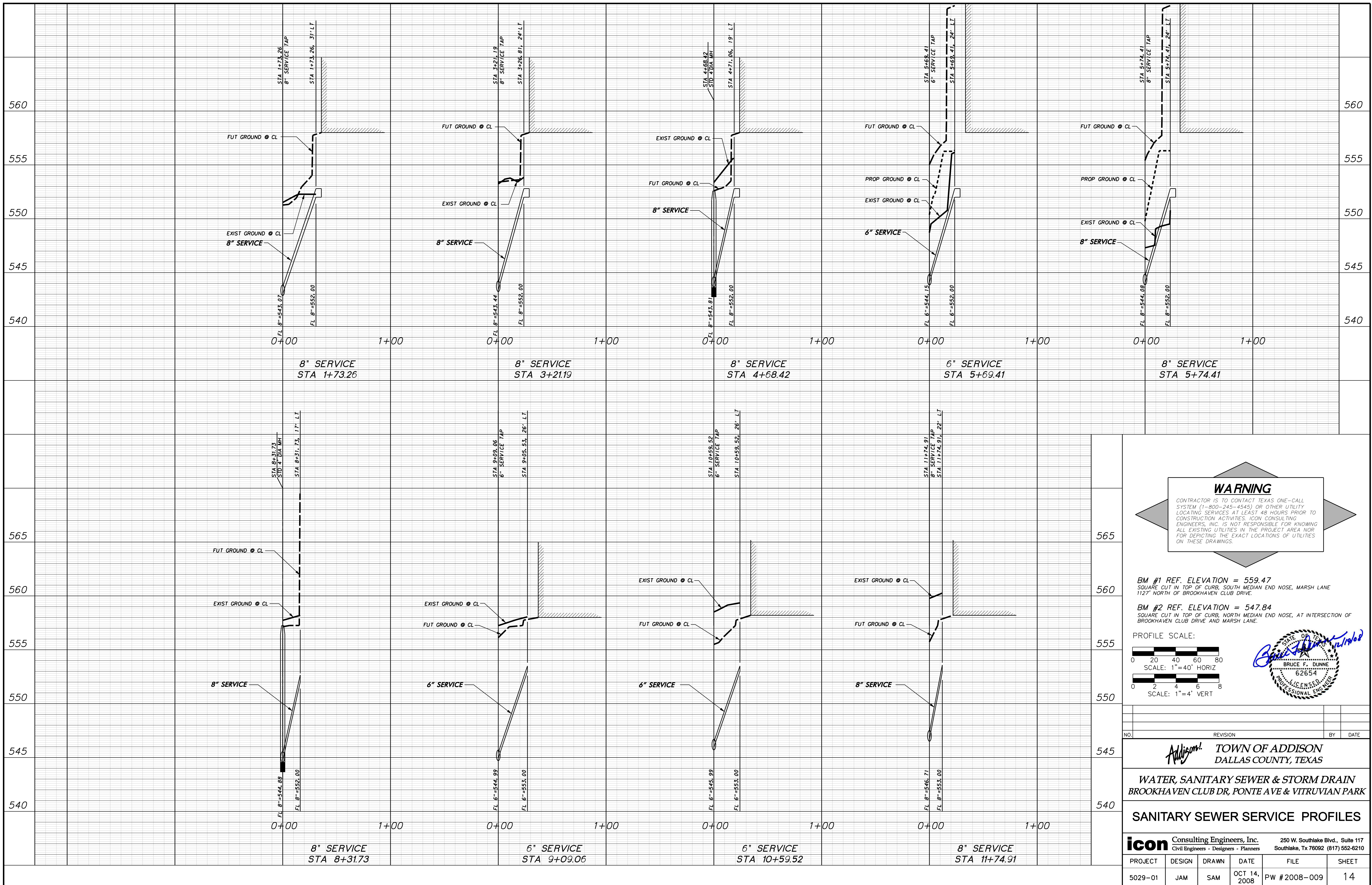
WATER, SANITARY SEWER & STORM DRAIN  
 BROOKHAVEN CLUB DR, PONTE AVE & VITRUVIAN PARK

SANITARY SEWER PLAN & PROFILE~SS-B  
 STA. 8+00.00 TO STA. 14+61.32

**icon** Consulting Engineers, Inc.  
 Civil Engineers - Designers - Planners  
 250 W. Southlake Blvd., Suite 117  
 Southlake, TX 76092 (817) 552-6210

PROJECT	DESIGN	DRAWN	DATE	FILE	SHEET
5029-01	JAM	SAM	OCT 14, 2008	PW #2008-009	13

WATER, SANITARY SEWER, & STORM DRAIN IMPROVEMENTS - BROOKHAVEN CLUB DRIVE, PONTE AVENUE & VITRUVIAN PARK

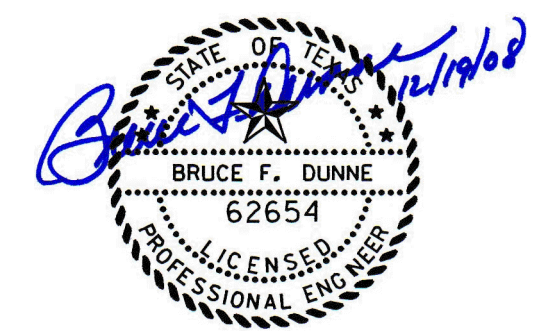
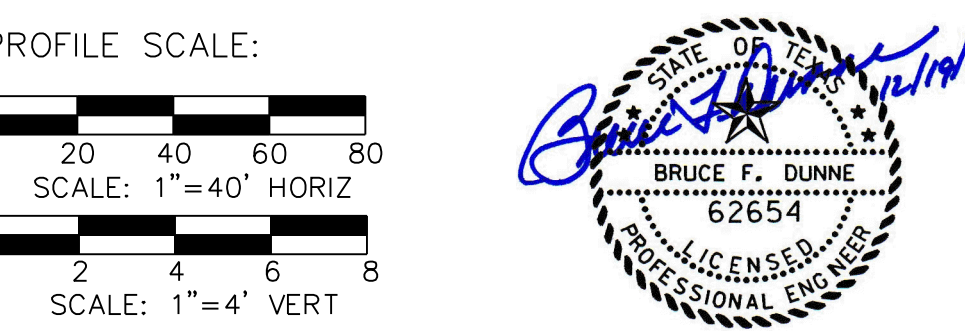


**WARNING**

CONTRACTOR IS TO CONTACT TEXAS ONE-CALL SYSTEM (1-800-245-4545) OR OTHER UTILITY LOCATING SERVICES AT LEAST 48 HOURS PRIOR TO CONSTRUCTION ACTIVITIES. ICON CONSULTING ENGINEERS, INC. IS NOT RESPONSIBLE FOR KNOWING ALL EXISTING UTILITIES IN THE PROJECT AREA NOR FOR DEPICTING THE EXACT LOCATIONS OF UTILITIES ON THESE DRAWINGS.

BM #1 REF. ELEVATION = 559.47  
 SQUARE CUT IN TOP OF CURB, SOUTH MEDIAN END NOSE, MARSH LANE  
 1127' NORTH OF BROOKHAVEN CLUB DRIVE.

BM #2 REF. ELEVATION = 547.84  
 SQUARE CUT IN TOP OF CURB, NORTH MEDIAN END NOSE, AT INTERSECTION OF  
 BROOKHAVEN CLUB DRIVE AND MARSH LANE.



**ADDISON!** TOWN OF ADDISON  
 DALLAS COUNTY, TEXAS

WATER, SANITARY SEWER & STORM DRAIN  
 BROOKHAVEN CLUB DR, PONTE AVE & VITRUVIAN PARK

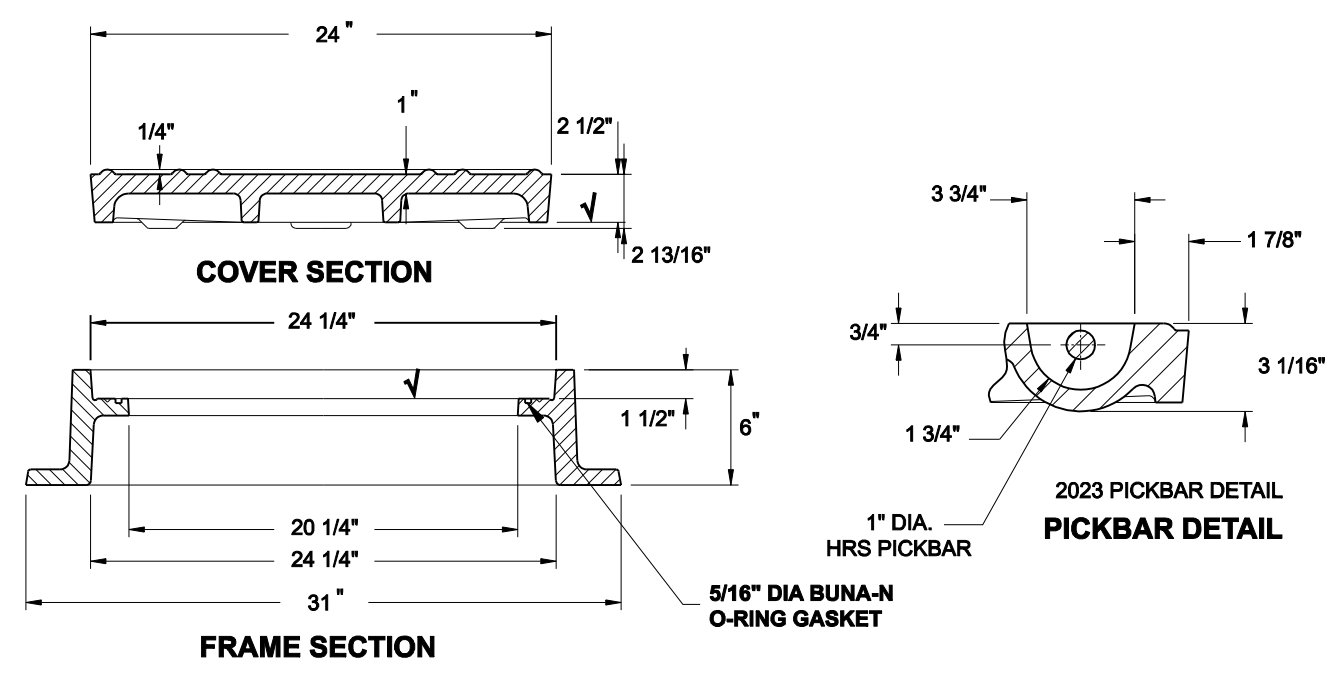
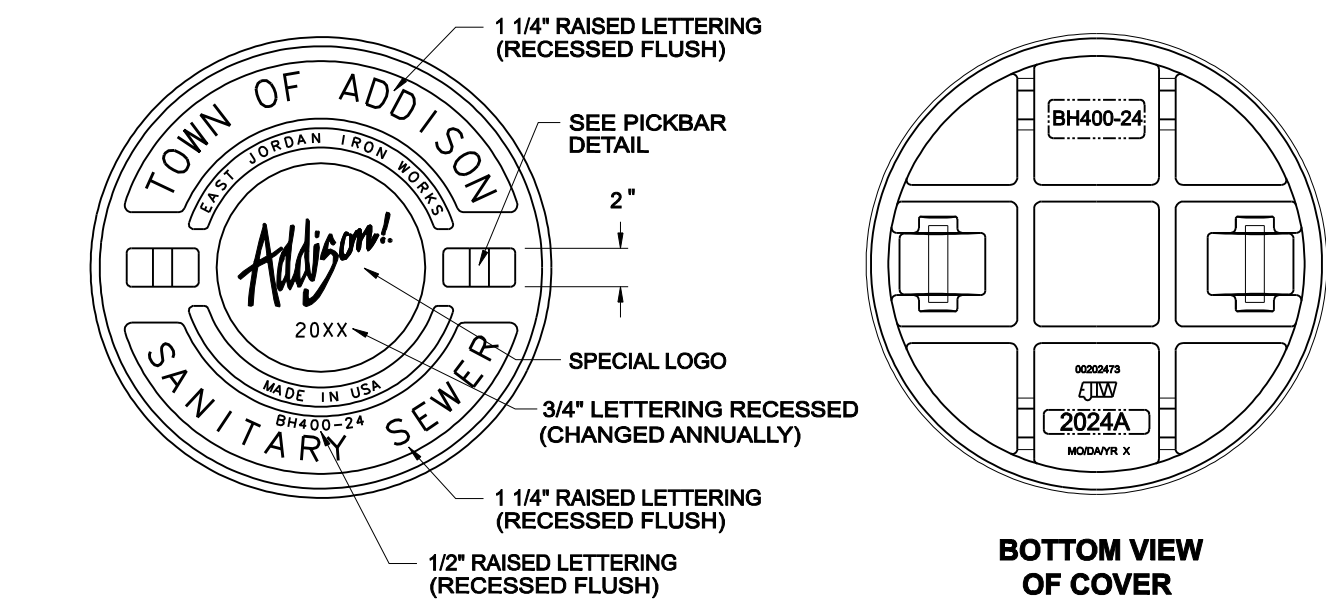
**SANITARY SEWER SERVICE PROFILES**

**icon** Consulting Engineers, Inc. 250 W. Southlake Blvd., Suite 117  
 Civil Engineers - Designers - Planners Southlake, Tx 76092 (817) 552-6210

PROJECT	DESIGN	DRAWN	DATE	FILE	SHEET
5029-01	JAM	SAM	OCT 14, 2008	PW #2008-009	14

WATER, SANITARY SEWER, & STORM DRAIN IMPROVEMENTS - BROOKHAVEN CLUB DRIVE, PONTE AVENUE & VITRUVIAN PARK

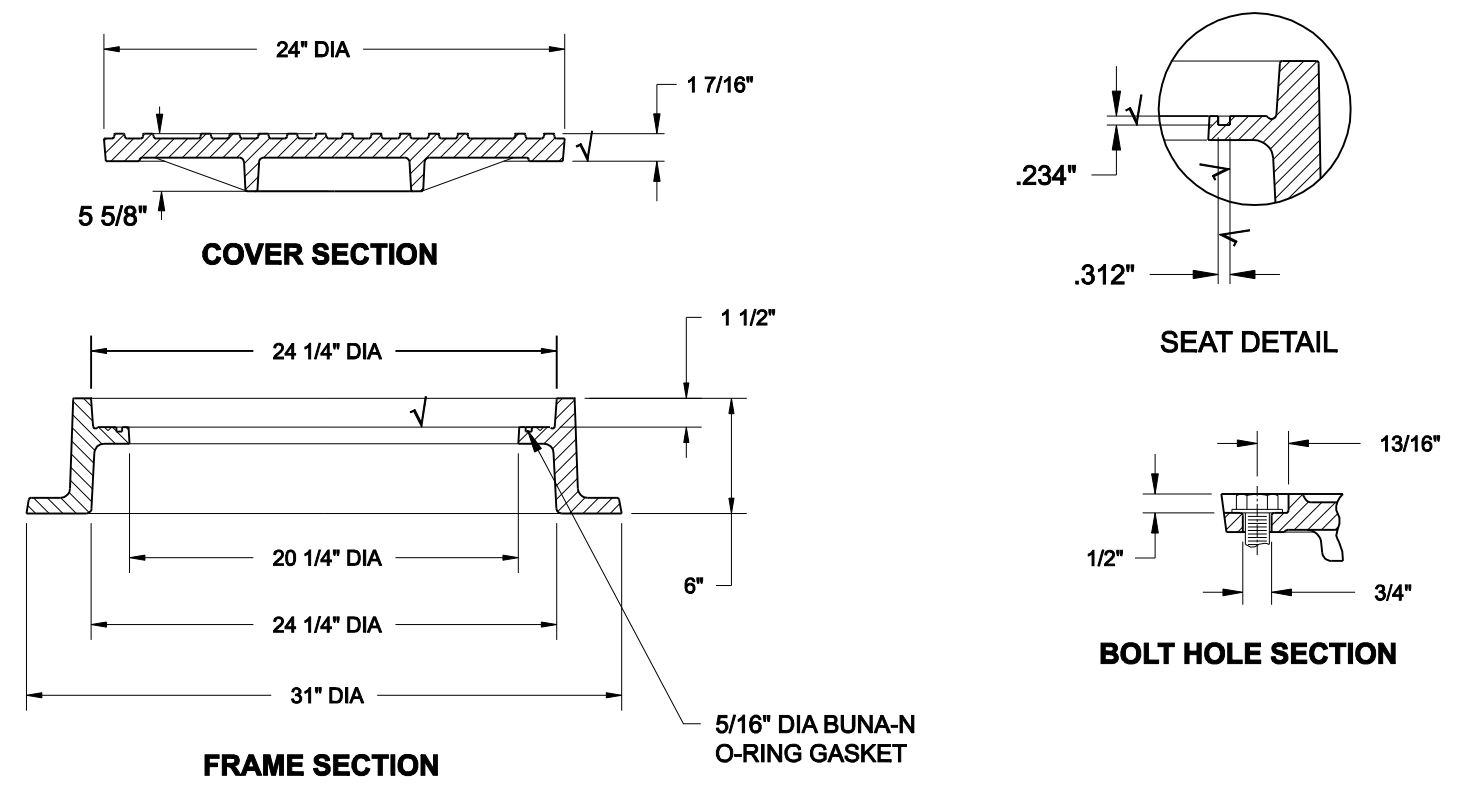
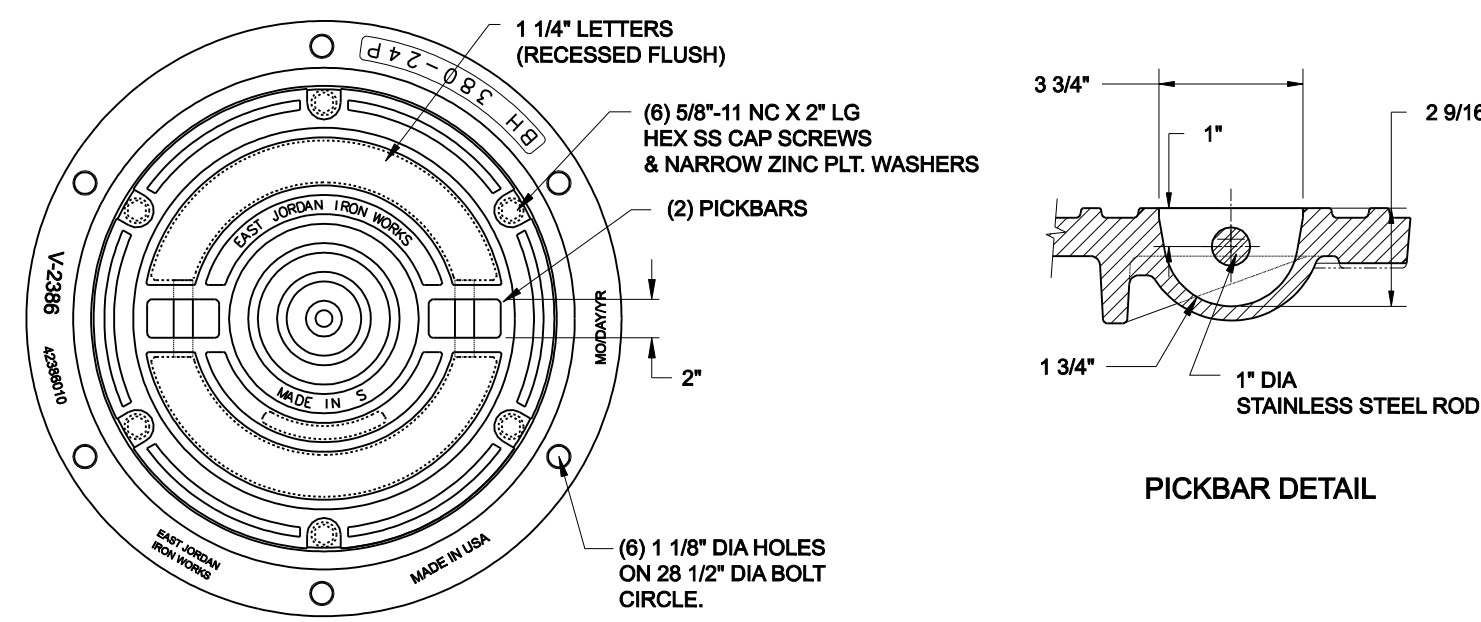




LOAD RATING	COATING	ESTIMATED WEIGHT	MATERIAL SPECIFICATION
HEAVY DUTY	DIPPED	COVER: 190 LBS 86 kg	COVER - GRAY IRON ASTM A48 CL35B

√ DESIGNATES MACHINE SURFACE

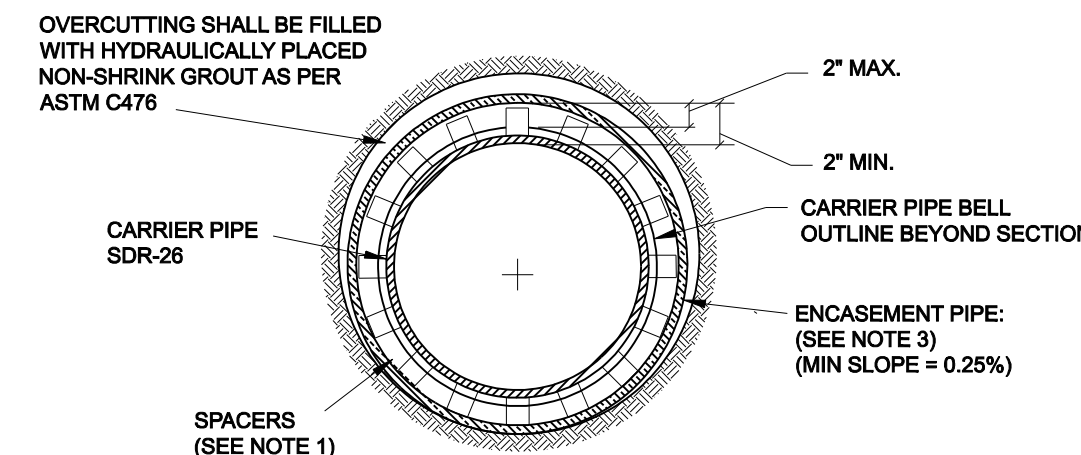
**CAST IRON FRAME AND COVER**



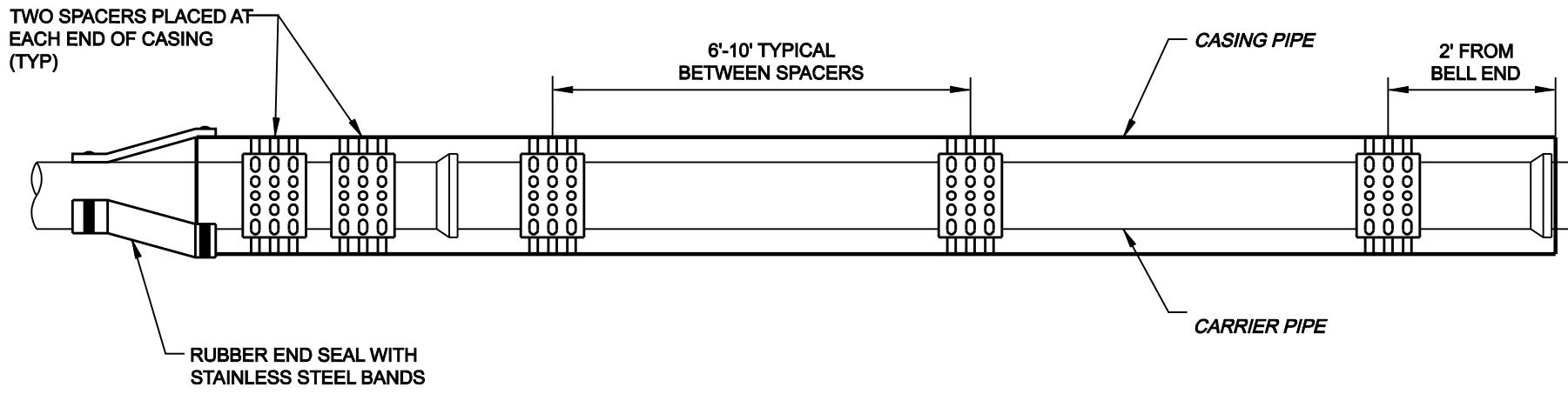
LOAD RATING	COATING	ESTIMATED WEIGHT	MATERIAL SPECIFICATION
HEAVY DUTY	UNDIPPED	COVER: 160 LBS 73kg FRAME: 210 LBS 95kg ASSY : 370 LBS 168kg	COVER - GRAY IRON ASTM A48 CL35B FRAME - GRAY IRON ASTM A48 CL35B

√ DESIGNATES MACHINE SURFACE

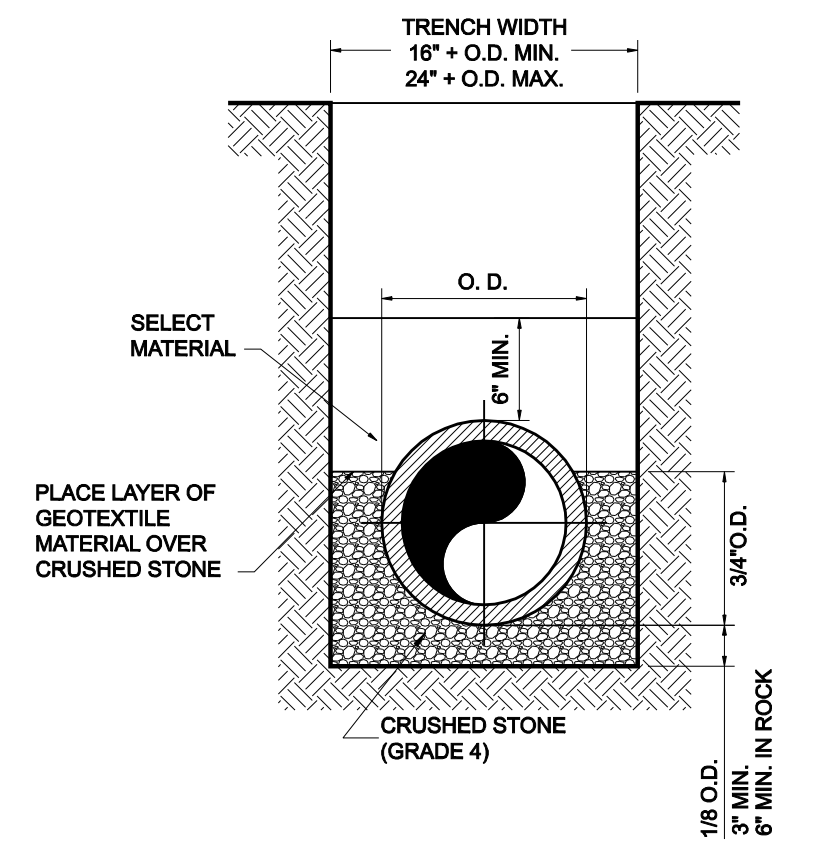
**PRESSURE TYPE FRAME AND COVER**



- NOTES:
- (1) HIGH DENSITY POLYETHYLENE SPACERS, RACI OR EQUAL, SHALL BE USED. WHERE NO CASING PIPE IS REQUIRED OVERCUTTING AROUND UTILITY SHALL BE FILLED WITH HYDRAULICALLY PLACED NON-SHRINK GROUT AS PER ASTM C476.
  - (2) END GROUTING FOR ALL ENCASEMENTS SHALL BE AS PER ASTM STANDARD C476 (1:7 GROUT WITH 5% TO 40% AIR ENTRAINMENT). GROUT SHALL BE PLACED BY HYDRAULIC PUMP FROM THE LOWER END OF THE ENCASEMENT PIPE, THEREBY INSURING COMPLETE FILLING OF ENCASEMENT PIPE.
  - (3) ENCASEMENT PIPE SHALL BE EITHER DUCTILE IRON PIPE OR HIGH DENSITY STEEL PIPE. ALL JOINTS TO BE WELDED 100%.

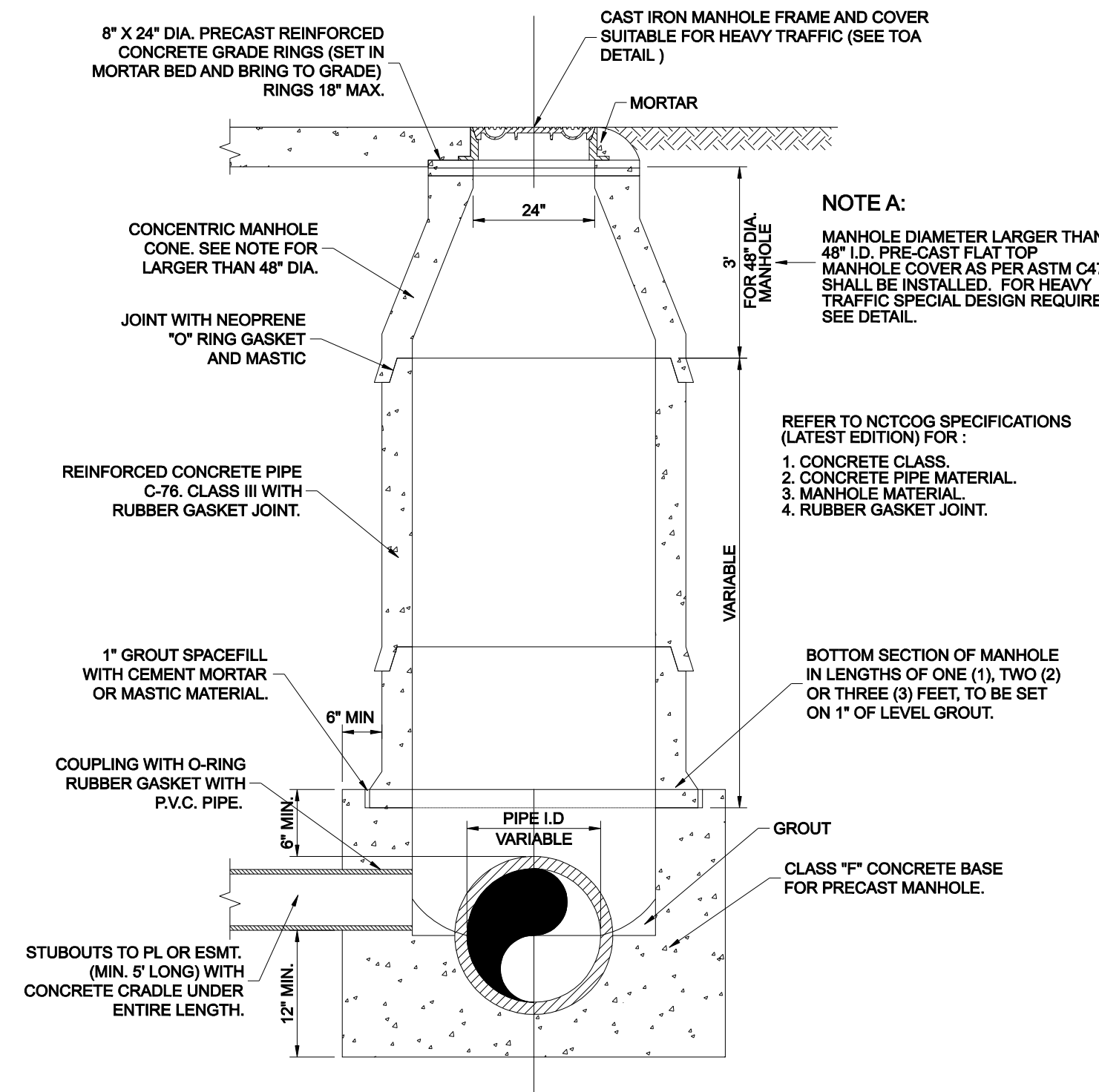


**SANITARY SEWER MAIN ENCASEMENT**



**CLASS "B+" EMBEDMENT**

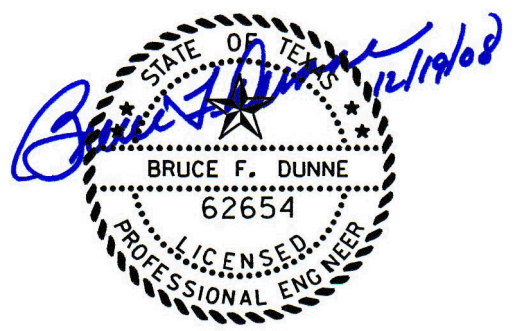
TYPICAL BACKFILL WATER MAIN  
P.V.C. WATER PIPE



- NOTE A:
- MANHOLE DIAMETER LARGER THAN 48\"/>
- REFER TO NCTCOG SPECIFICATIONS (LATEST EDITION) FOR:
1. CONCRETE CLASS.
  2. CONCRETE PIPE MATERIAL.
  3. MANHOLE MATERIAL.
  4. RUBBER GASKET JOINT.

NOTE:  
IF FALSE MANHOLE BOTTOMS  
ARE REQUIRED, THEY SHALL  
BE CONSTRUCTED, INSTALLED  
AND REMOVED.

ALL MANHOLES SHALL PASS VACUUM TEST AS PER NCTCOG SPECIFICATIONS



NO.	REVISION	BY	DATE

**Addison!** TOWN OF ADDISON  
DALLAS COUNTY, TEXAS

WATER, SANITARY SEWER & STORM DRAIN  
BROOKHAVEN CLUB DR, PONTE AVE & VITRUVIAN PARK

**SANITARY SEWER DETAILS**

**icon** Consulting Engineers, Inc. 250 W. Southlake Blvd., Suite 117  
Civil Engineers - Designers - Planners Southlake, Tx 76092 (817) 552-6210

PROJECT	DESIGN	DRAWN	DATE	FILE	SHEET
5029-01	JAM	SAM	OCT 14, 2008	PW #2008-009	15

WATER, SANITARY SEWER, & STORM DRAIN IMPROVEMENTS - BROOKHAVEN CLUB DRIVE, PONTE AVENUE & VITRUVIAN PARK