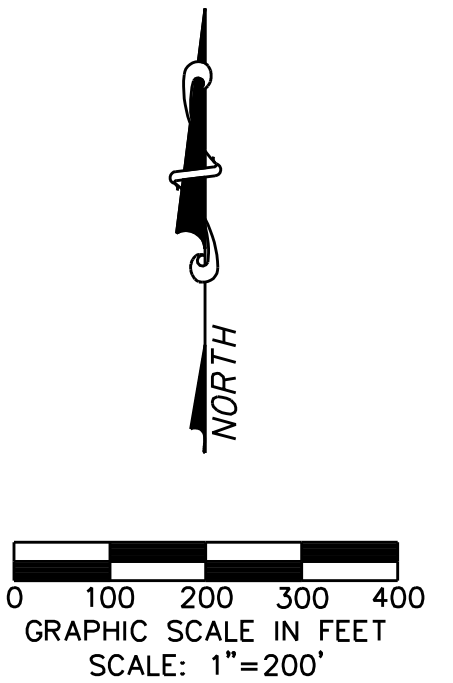


SANITARY SEWER DRAINAGE AREA CALCULATIONS

Drainage Area	Area (Acres)	Residential Units	Design Flow (Gal/Day)	Infiltration (Gal/Day)	Total Q (Gal/Day)	Acum Q (MGD)	Notes
A-10	1.40	84	37,800	910	38,710	0.0387	Future SS Line 'B-3'
A-11	1.70	102	45,900	1,105	47,005	0.0857	Future SS Line 'B-3'
A-12	0.80	48	21,600	520	22,120	0.1078	Future SS Line 'B-3'
A-18	1.50	90	40,500	975	41,475	0.1493	Future SS Line 'B-3'
A-19	1.50	90	40,500	975	41,475	0.1068	Future SS Line 'B-3'
A-20	1.10	66	29,700	715	30,415	0.0304	SS Line 'B'
A-21	0.90	54	24,300	585	24,885	0.0553	SS Line 'B'
A-22	0.40	24	10,800	260	11,060	0.0664	SS Line 'B'
A-23	0.50	30	13,500	325	13,825	0.0802	SS Line 'B'
OS	2.60	156	70,200	1,690	71,890	0.1521	SS Line 'B'
A-24	1.10	66	29,700	715	30,415	0.1825	SS Line 'B'
A-25	1.20	72	32,400	780	33,180	0.2157	SS Line 'B'
A-26	0.50	30	13,500	325	13,825	0.2295	SS Line 'B'
A-27	0.50	30	13,500	325	13,825	0.2433	SS Line 'B'
A-28	0.20	12	5,400	130	5,530	0.2489	SS Line 'B'
C-1	0.80	48	21,600	520	22,120	0.0221	Future SS Line 'B-2'
C-2	0.50	30	13,500	325	13,825	0.0359	Future SS Line 'B-2'
C-3	0.50	30	13,500	325	13,825	0.0498	Future SS Line 'B-2'
C-4	0.40	24	10,800	260	11,060	0.0608	Future SS Line 'B-2'
C-5	0.20	12	5,400	130	5,530	0.0664	Future SS Line 'B-2'
C-6	0.50	30	13,500	325	13,825	0.0802	Future SS Line 'B-2'
C-7	0.50	30	13,500	325	13,825	0.0940	Future SS Line 'B-2'
C-8	1.10	66	29,700	715	30,415	0.1244	Future SS Line 'B-2'
C-9	1.00	60	27,000	650	27,650	0.1521	Future SS Line 'B-2'
C-10	0.60	36	16,200	390	16,590	0.1687	Future SS Line 'B-2'
A-29	0.30	18	8,100	195	8,295	0.6166	SS Line 'B'
A-30	0.80	48	21,600	520	22,120	0.6387	SS Line 'B'
A-31	1.20	72	32,400	780	33,180	0.6719	SS Line 'B'
A-32	1.30	78	35,100	845	35,945	0.7078	SS Line 'B'
A-33	1.40	84	37,800	910	38,710	0.0387	SS Line 'B-1'
A-34	0.50	30	13,500	325	13,825	0.0525	SS Line 'B-1'
A-35	0.60	36	16,200	390	16,590	0.0691	SS Line 'B-1'
A-36	1.10	66	29,700	715	30,415	0.0995	SS Line 'B-1'
C-15	2.10	126	56,700	1,365	58,065	0.8654	SS Line 'B'
B-25	0.50	30	13,500	325	13,825	0.8793	SS Line 'B'
B-26	0.50	30	13,500	325	13,825	0.8931	SS Line 'B'
B-27	0.50	30	13,500	325	13,825	0.9069	SS Line 'B'
C-18	1.20	72	32,400	780	33,180	0.9401	SS Line 'B'
C-30	2.30	138	62,100	1,495	63,595	1.0037	SS Line 'B'
C-32	1.40	84	37,800	910	38,710	1.0424	SS Line 'B'
Total	37.70	2262	1,017,900	24,505	1,042,405	1.0424	To Existing 10" SS Line



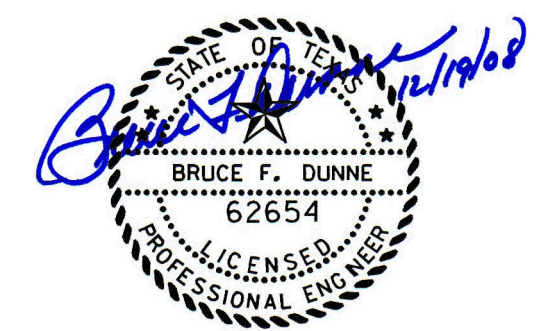
SANITARY SEWER DRAINAGE AREA

WARNING

CONTRACTOR IS TO CONTACT TEXAS ONE-CALL SYSTEM (1-800-245-4545) OR OTHER UTILITY LOCATING SERVICES AT LEAST 48 HOURS PRIOR TO CONSTRUCTION ACTIVITIES. ICON CONSULTING ENGINEERS, INC. IS NOT RESPONSIBLE FOR KNOWING ALL EXISTING UTILITIES IN THE PROJECT AREA NOR FOR DEPICTING THE EXACT LOCATIONS OF UTILITIES ON THESE DRAWINGS.

BM #1 REF. ELEVATION = 559.47
 SQUARE CUT IN TOP OF CURB, SOUTH MEDIAN END NOSE, MARSH LANE
 1127' NORTH OF BROOKHAVEN CLUB DRIVE.

BM #2 REF. ELEVATION = 547.84
 SQUARE CUT IN TOP OF CURB, NORTH MEDIAN END NOSE, AT INTERSECTION OF
 BROOKHAVEN CLUB DRIVE AND MARSH LANE.



NO.	REVISION	BY	DATE

Addison! TOWN OF ADDISON
 DALLAS COUNTY, TEXAS

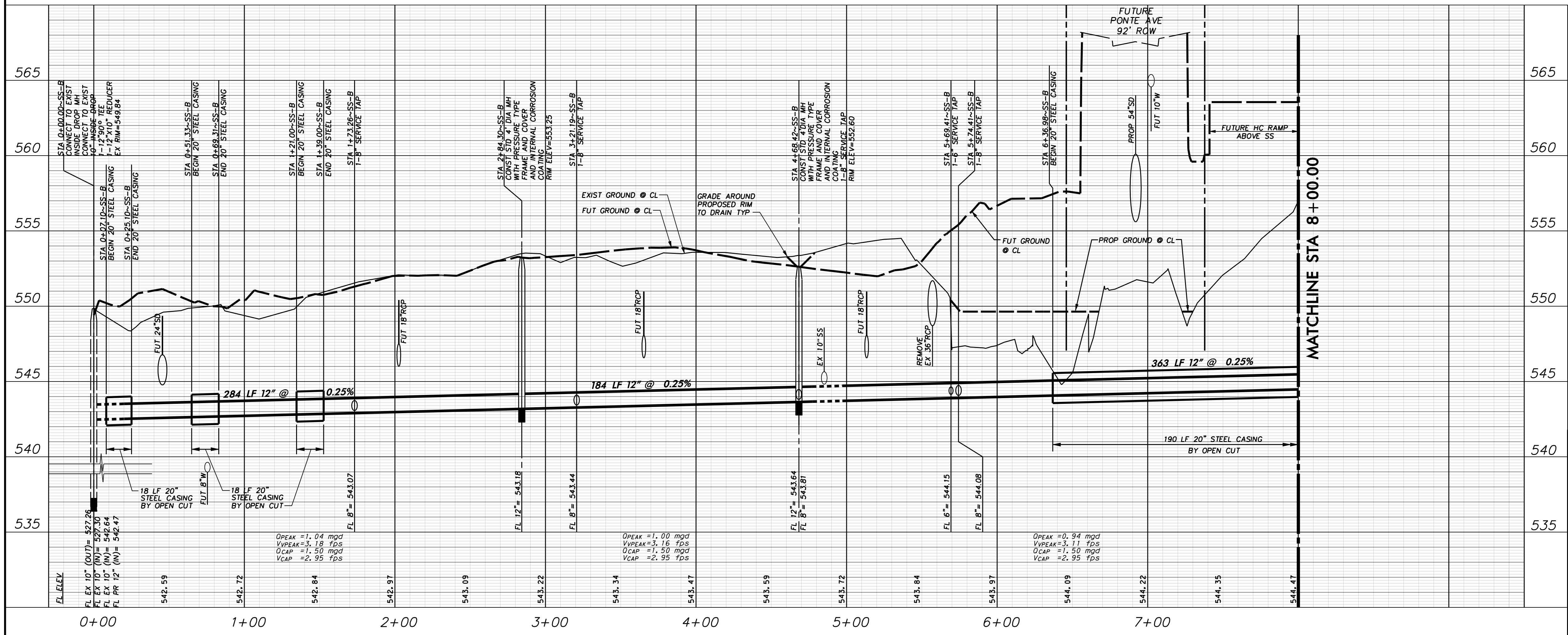
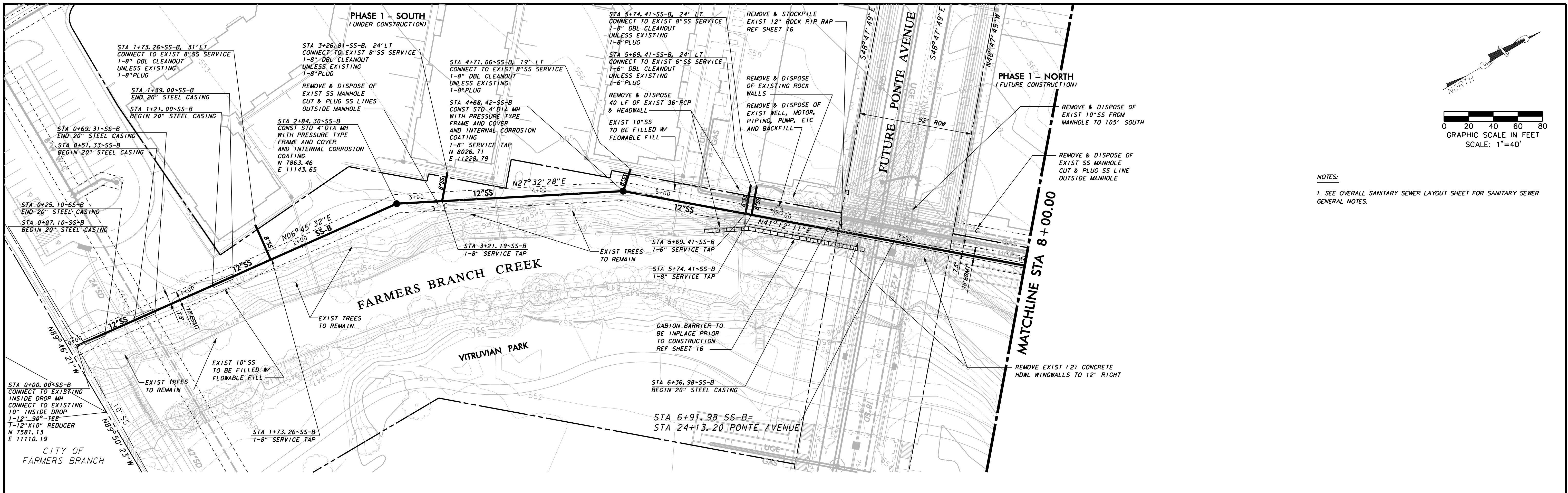
WATER, SANITARY SEWER & STORM DRAIN
 BROOKHAVEN CLUB DR, PONTE AVE & VITRUVIAN PARK

SANITARY SEWER DRAINAGE AREA MAP

icon Consulting Engineers, Inc. 250 W. Southlake Blvd., Suite 117
 Civil Engineers - Designers - Planners Southlake, Tx 76092 (817) 552-6210

PROJECT	DESIGN	DRAWN	DATE	FILE	SHEET
5029-01	JAM	SAM	OCT 14, 2008	PW #2008-009	11

WATER, SANITARY SEWER, & STORM DRAIN IMPROVEMENTS - BROOKHAVEN CLUB DRIVE, PONTE AVENUE & VITRUVIAN PARK



WARNING

CONTRACTOR IS TO CONTACT TEXAS ONE-CALL SYSTEM (1-800-245-4545) OR OTHER UTILITY LOCATING SERVICES AT LEAST 48 HOURS PRIOR TO CONSTRUCTION ACTIVITIES. ICON CONSULTING ENGINEERS, INC. IS NOT RESPONSIBLE FOR KNOWING ALL EXISTING UTILITIES IN THE PROJECT AREA NOR FOR DEPICTING THE EXACT LOCATIONS OF UTILITIES ON THESE DRAWINGS.

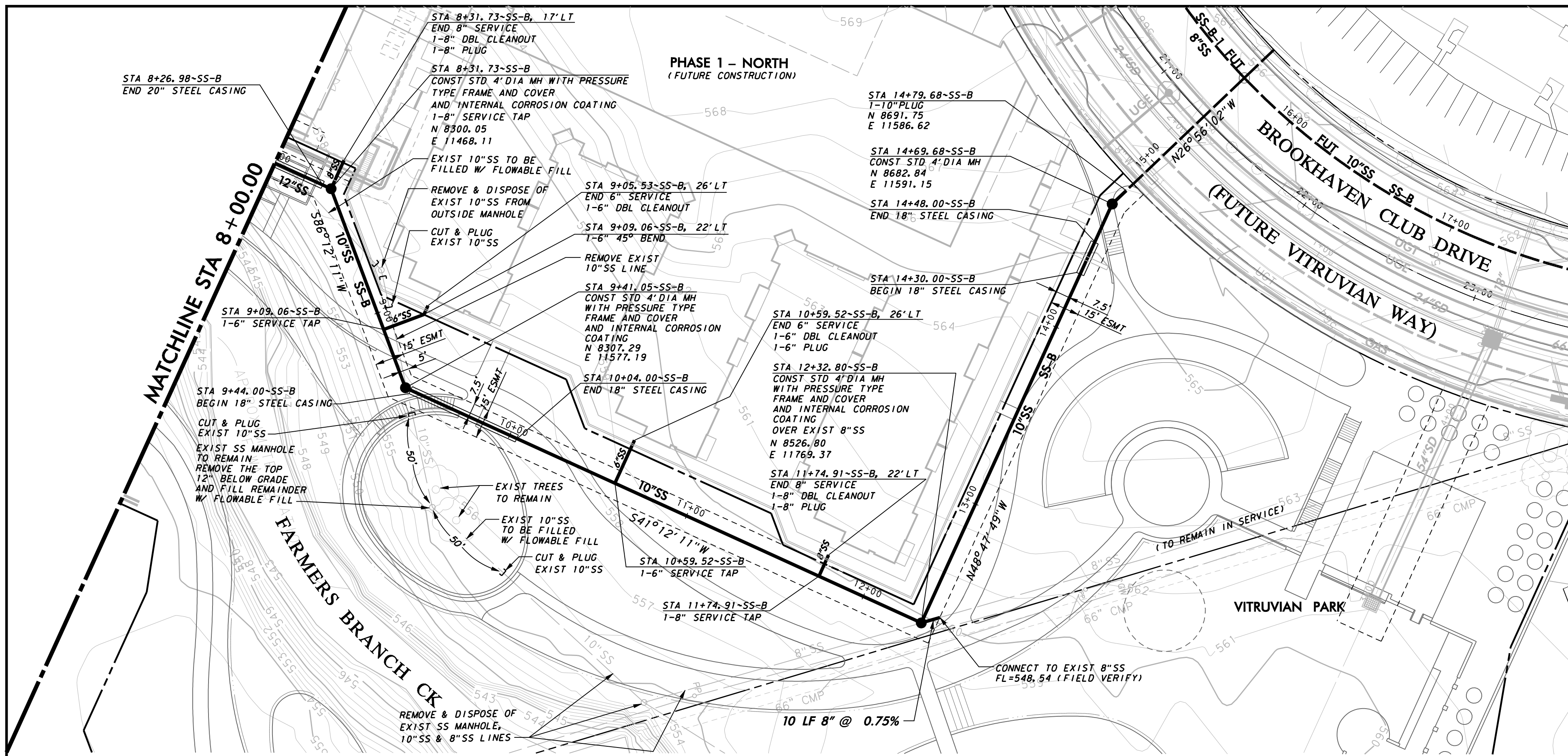
BM #1 REF. ELEVATION = 559.47
SQUARE CUT IN TOP OF CURB, SOUTH MEDIAN END NOSE, MARSH LANE 1127' NORTH OF BROOKHAVEN CLUB DRIVE.

BM #2 REF. ELEVATION = 547.84
SQUARE CUT IN TOP OF CURB, NORTH MEDIAN END NOSE, AT INTERSECTION OF BROOKHAVEN CLUB DRIVE AND MARSH LANE.

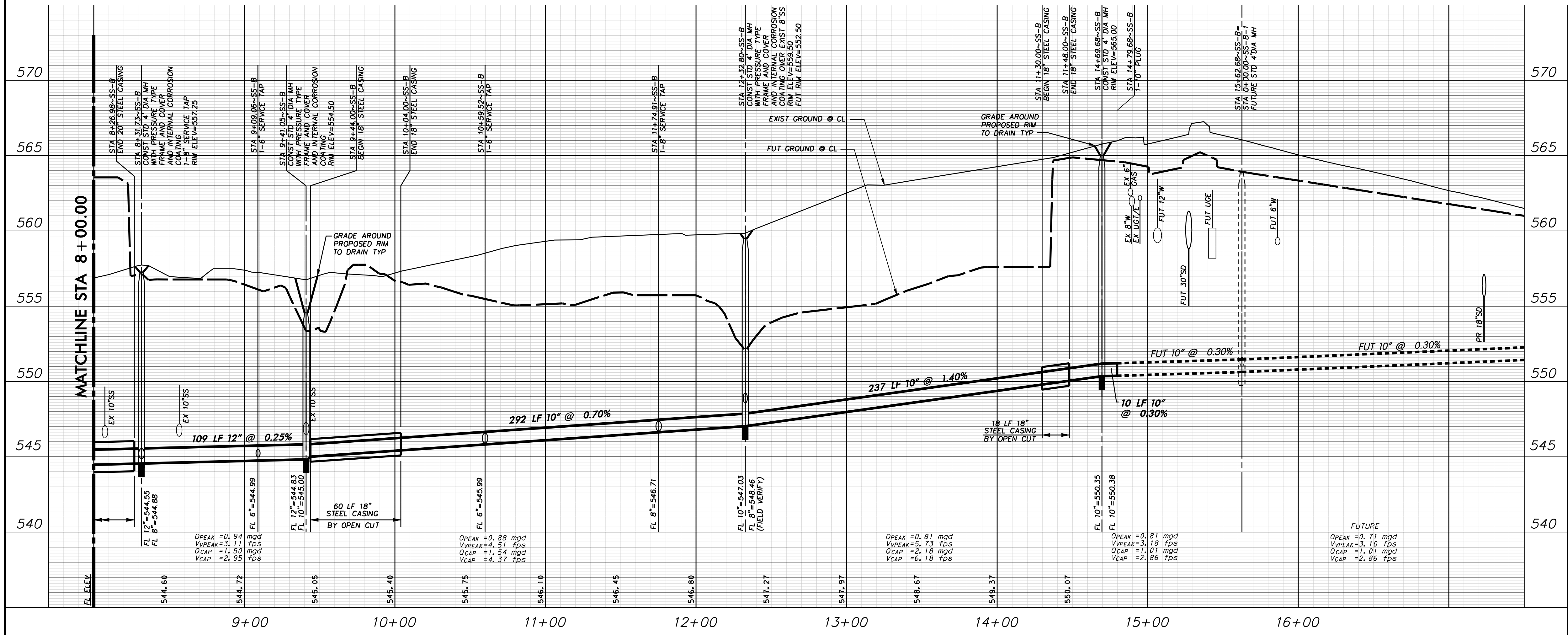
PROFILE SCALE:
0 20 40 60 80
SCALE: 1" = 40' HORIZ
0 2 4 6 8
SCALE: 1" = 4' VERT

1		ADDED STEEL CASING	11/12/08
NO.	REVISION	BY	DATE
TOWN OF ADDISON DALLAS COUNTY, TEXAS			
WATER, SANITARY SEWER & STORM DRAIN BROOKHAVEN CLUB DR, PONTE AVE & VITRUVIAN PARK			
SANITARY SEWER PLAN & PROFILE~SS-B STA. 0+00.00 TO STA. 8+00.00			
icon Consulting Engineers, Inc. Civil Engineers - Designers - Planners		250 W. Southlake Blvd., Suite 117 Southlake, Tx 76092 (817) 552-6210	
PROJECT	DESIGN	DRAWN	DATE
5029-01	JAM	SAM	OCT 14, 2008
FILE	DATE	FILE	SHEET
PW #2008-009			12

WATER, SANITARY SEWER, & STORM DRAIN IMPROVEMENTS - BROOKHAVEN CLUB DRIVE, PONTE AVENUE & VITRUVIAN PARK



NOTES:
 1. SEE OVERALL SANITARY SEWER LAYOUT SHEET FOR SANITARY SEWER GENERAL NOTES.

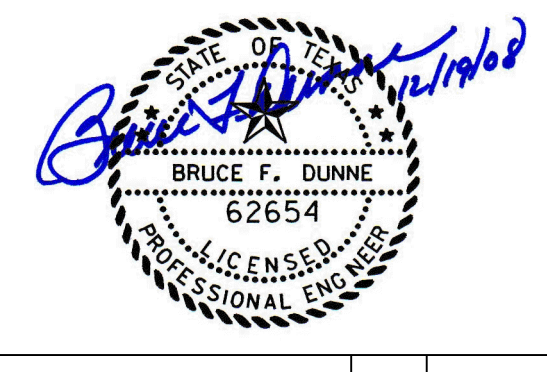


WARNING
 CONTRACTOR IS TO CONTACT TEXAS ONE-CALL SYSTEM (1-800-245-4545) OR OTHER UTILITY LOCATING SERVICES AT LEAST 48 HOURS PRIOR TO CONSTRUCTION ACTIVITIES. ICON CONSULTING ENGINEERS, INC. IS NOT RESPONSIBLE FOR KNOWING ALL EXISTING UTILITIES IN THE PROJECT AREA NOR FOR DEPICTING THE EXACT LOCATIONS OF UTILITIES ON THESE DRAWINGS.

BM #1 REF. ELEVATION = 559.47
 SQUARE CUT IN TOP OF CURB, SOUTH MEDIAN END NOSE, MARSH LANE
 1127' NORTH OF BROOKHAVEN CLUB DRIVE.

BM #2 REF. ELEVATION = 547.84
 SQUARE CUT IN TOP OF CURB, NORTH MEDIAN END NOSE, AT INTERSECTION OF BROOKHAVEN CLUB DRIVE AND MARSH LANE.

PROFILE SCALE:
 0 20 40 60 80
 SCALE: 1"=40' HORIZ
 0 2 4 6 8
 SCALE: 1"=4' VERT



NO.	REVISION	BY	DATE

Addison! TOWN OF ADDISON
 DALLAS COUNTY, TEXAS

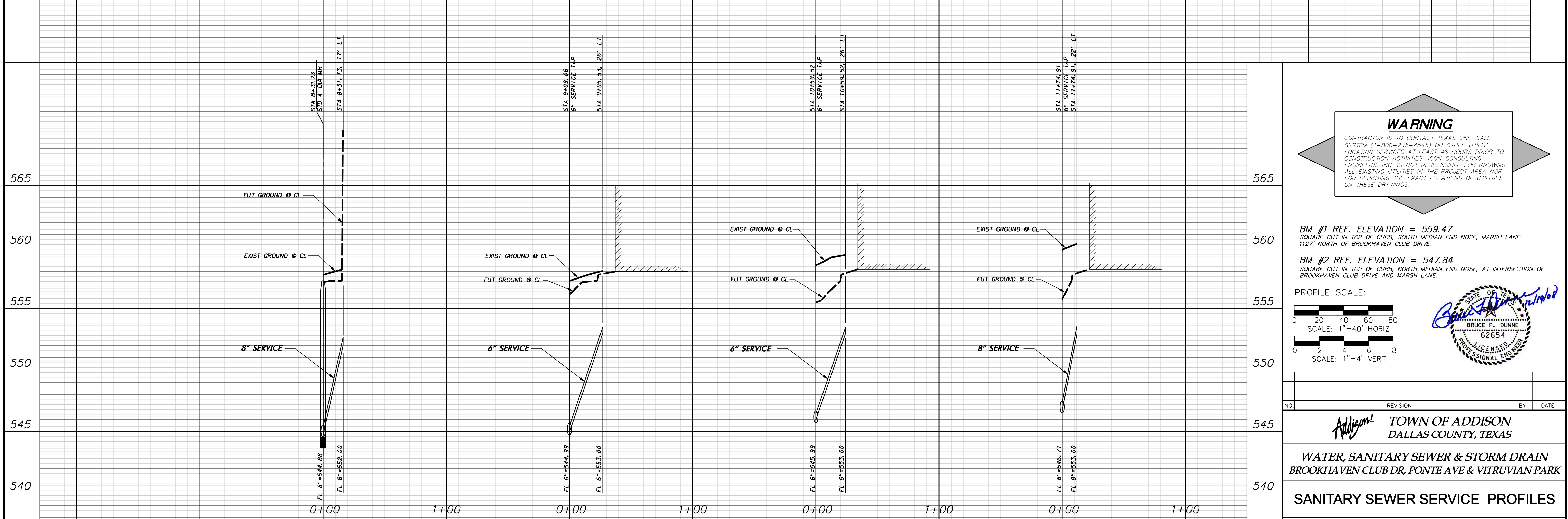
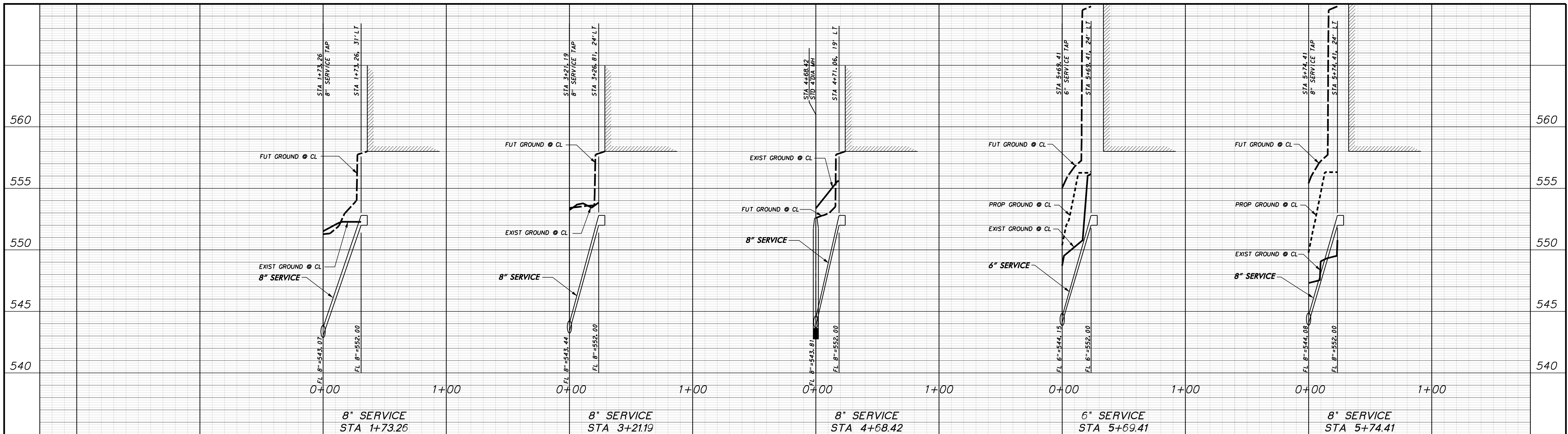
WATER, SANITARY SEWER & STORM DRAIN
 BROOKHAVEN CLUB DR, PONTE AVE & VITRUVIAN PARK

SANITARY SEWER PLAN & PROFILE~SS-B
 STA. 8+00.00 TO STA. 14+61.32

icon Consulting Engineers, Inc. 250 W. Southlake Blvd., Suite 117
 Civil Engineers - Designers - Planners Southlake, Tx 76092 (817) 552-6210

PROJECT	DESIGN	DRAWN	DATE	FILE	SHEET
5029-01	JAM	SAM	OCT 14, 2008	PW #2008-009	13

WATER, SANITARY SEWER, & STORM DRAIN IMPROVEMENTS - BROOKHAVEN CLUB DRIVE, PONTE AVENUE & VITRUVIAN PARK



WARNING

CONTRACTOR IS TO CONTACT TEXAS ONE-CALL SYSTEM (1-800-245-4545) OR OTHER UTILITY LOCATING SERVICES AT LEAST 48 HOURS PRIOR TO CONSTRUCTION ACTIVITIES. ICON CONSULTING ENGINEERS, INC. IS NOT RESPONSIBLE FOR KNOWING ALL EXISTING UTILITIES IN THE PROJECT AREA NOR FOR DEPICTING THE EXACT LOCATIONS OF UTILITIES ON THESE DRAWINGS.

BM #1 REF. ELEVATION = 559.47
 SQUARE CUT IN TOP OF CURB, SOUTH MEDIAN END NOSE, MARSH LANE
 1127' NORTH OF BROOKHAVEN CLUB DRIVE.

BM #2 REF. ELEVATION = 547.84
 SQUARE CUT IN TOP OF CURB, NORTH MEDIAN END NOSE, AT INTERSECTION OF
 BROOKHAVEN CLUB DRIVE AND MARSH LANE.

PROFILE SCALE:
 0 20 40 60 80
 SCALE: 1"=40' HORIZ
 0 2 4 6 8
 SCALE: 1"=4' VERT

NO.	REVISION	BY	DATE

Addison! TOWN OF ADDISON
 DALLAS COUNTY, TEXAS

WATER, SANITARY SEWER & STORM DRAIN
 BROOKHAVEN CLUB DR, PONTE AVE & VITRUVIAN PARK

SANITARY SEWER SERVICE PROFILES

icon Consulting Engineers, Inc.		250 W. Southlake Blvd., Suite 117	
Civil Engineers - Designers - Planners		Southlake, Tx 76092 (817) 552-6210	
PROJECT	DESIGN	DRAWN	DATE
5029-01	JAM	SAM	OCT 14, 2008
FILE	SHEET		
PW #2008-009	14		

WATER, SANITARY SEWER, & STORM DRAIN IMPROVEMENTS - BROOKHAVEN CLUB DRIVE, PONTE AVENUE & VITRUVIAN PARK