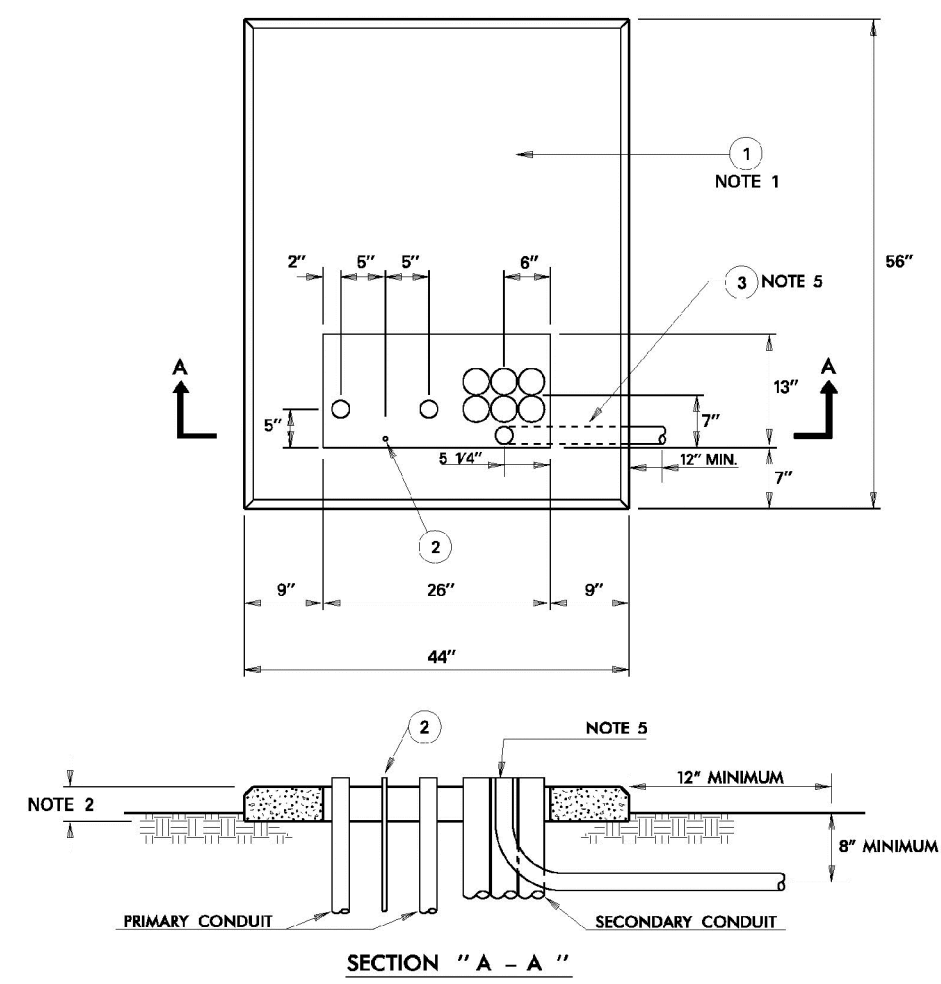


205 - 150 TRANSFORMER PAD - PRECAST SINGLE PHASE DEADFRONT (TYPE I)/LIVEFRONT **205 - 150**

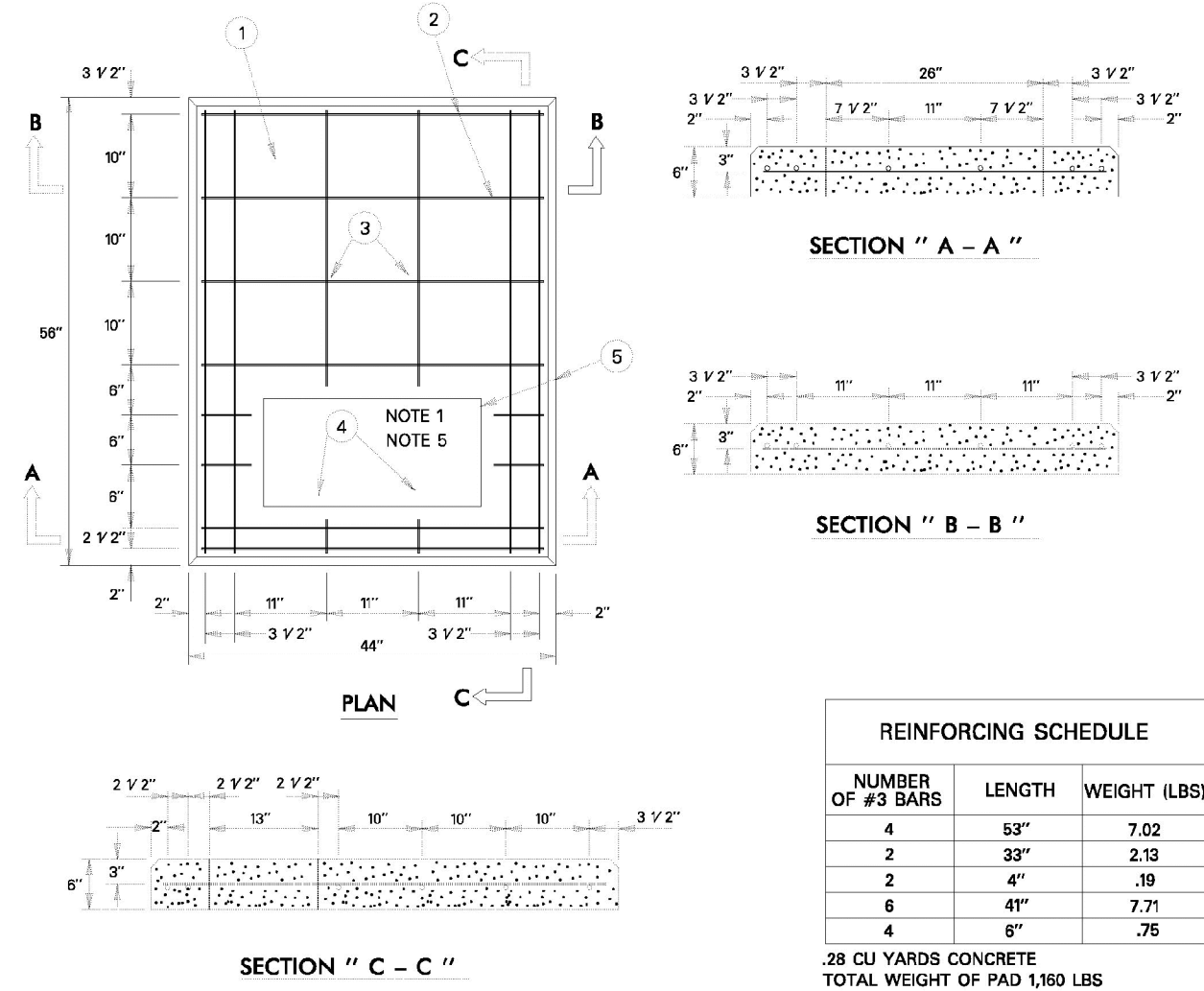


- NOTES:**
- A PRECAST CONCRETE PAD SHALL BE USED UNLESS LIFTING EQUIPMENT IS UNAVAILABLE OR CANNOT ACCESS THE SITE. USE POLYMER PADS ONLY WHEN SETTING PAD BY HAND.
 - THIS DIMENSION IS 6 INCHES FOR PRECAST CONCRETE PAD AND 4 INCHES FOR POLYMER CONCRETE PADS.
 - REFERENCE STANDARD 202-350 FOR FOREIGN UTILITY COMPANY EQUIPMENT GROUND.
 - PIERS SHALL BE INSTALLED UNDER PAD WHEN DIRT HAS BEEN DISTURBED UNDER THE LOAD BEARING AREA OF THE PAD. REFERENCE STANDARD 205-185 FOR PIER INSTALLATION.
 - THE 3" FLEX CONDUIT (TSN 308205) SHALL HAVE A MINIMUM OF 8" OF COVER AS IT EXITS ON THE RIGHT HAND SIDE OF THE TRANSFORMER PAD.

ITEM	QTY	DESCRIPTION	TSN/REF	CU	MU
1	1	PAD, TRANSFORMER, PRECAST CONCRETE, 44 x 56 IN.	304037		PPRCTI
1	1	PAD, TRANSFORMER, POLYMER CONCRETE, 44 x 56 IN.	319332		PPROCTI
2	1	ROD, GROUND 5/8" x 8' CU CLAD	204-100		
3	3	CONDUIT, HDPE, 1.5X, 3"	306209		

APPROVED BY TXU Electric Delivery

205 - 160 TRANSFORMER PAD POURED IN PLACE FOR SINGLE PHASE TRANSFORMERS **205 - 160**

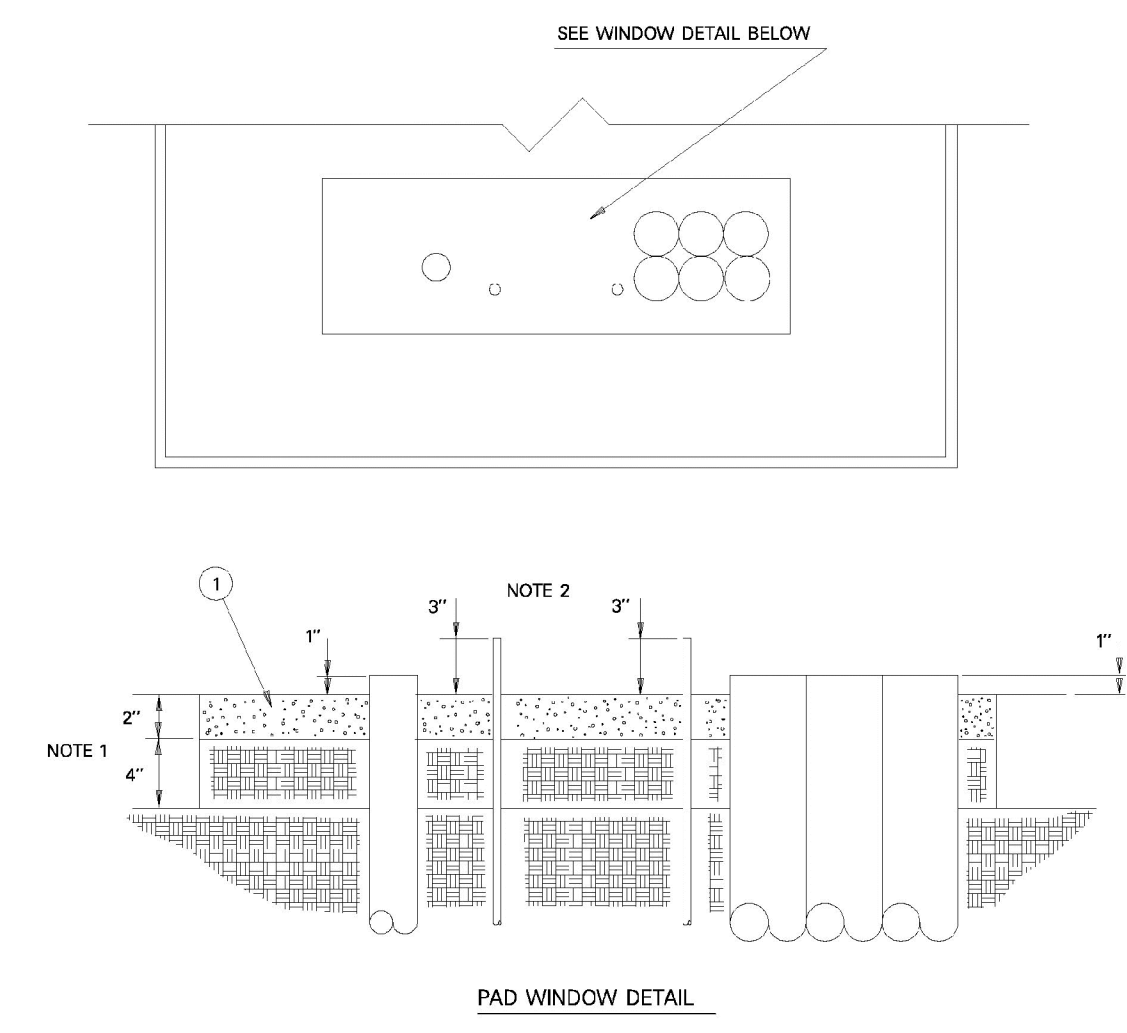


- NOTES:**
- SEE STANDARD 205-150 OR 205-155 FOR LOCATIONS OF CONDUITS AND GROUND ROD.
 - PIERS SHALL BE INSTALLED UNDER PAD WHEN DIRT HAS BEEN DISTURBED UNDER THE LOAD BEARING AREA OF THE PAD. REFERENCE STANDARD 205-185 FOR PIER INSTALLATION.
 - ALL STEEL TO BE A MINIMUM OF 1/2" FROM SURFACE OF CONCRETE.
 - ALL CHAMFERS TO BE 1/2" x 45 DEGREES. ROUNDING OF EDGES WITH ROUNDING TROWEL IS ACCEPTABLE IN LIEU OF CHAMFERING.
 - REFERENCE STANDARD 202-350 FOR FOREIGN UTILITY COMPANY EQUIPMENT GROUND.
 - SEE ALSO STANDARD 205-305 FOR GENERAL NOTES.

ITEM	QTY	DESCRIPTION	TSN/REF	CU	MU
1	0.28CY	CONCRETE			
2	47 FT	ROD, REINFORCING 3/8 IN.	303750		
3	AS REQD	WIRE, #16 STEEL, TIE SOLID BARE BLACK	31738		PCIPX
4	1	ROD, GROUND 5/8" x 8' CU	204-100, 150		
5	AS REQD	LUMBER			

APPROVED BY TU ELECTRIC

205 - 180 GROUTING DETAIL FOR TRANSFORMER PAD WINDOWS **205 - 180**

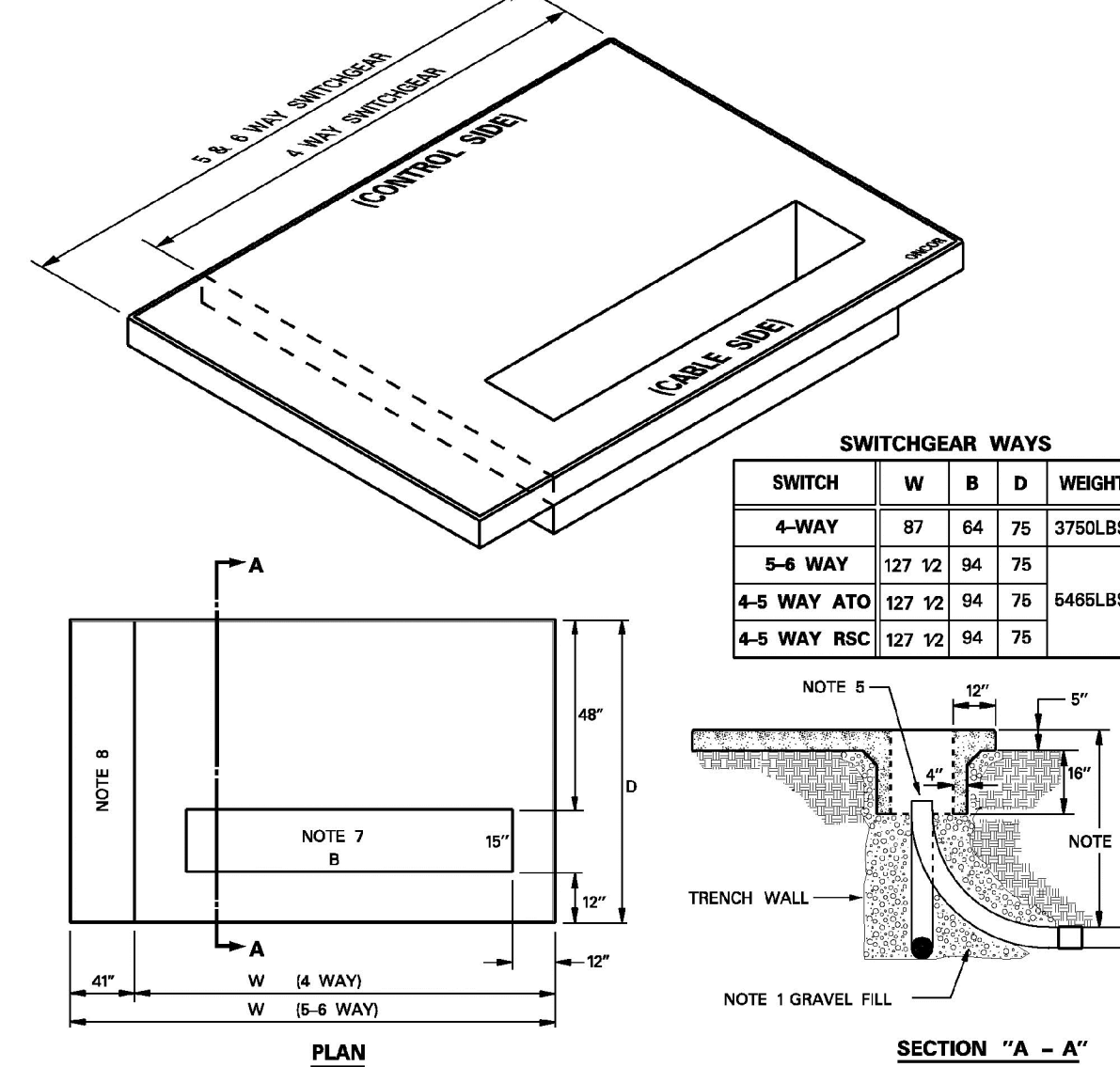


- NOTES:**
- FILL IN PAD WINDOW WITH 4 INCHES OF EARTH BACKFILL AND 2" OF GROUT.
 - GROUND RODS SHALL EXTEND A MAXIMUM OF 3 INCHES ABOVE GROUTING TO ASSURE ADEQUATE DRIVEN DEPTH AND ALLOW FOR ADEQUATE CONNECTING SPACE.

ITEM	QTY	DESCRIPTION	TSN	AUN	MACRO AUN
1	AS REQD	GROUT			

APPROVED BY TU ELECTRIC

205 - 345 PRECAST DEEP WELL PAD FOR 25KV DEAD FRONT SWITCHGEAR **205 - 345**

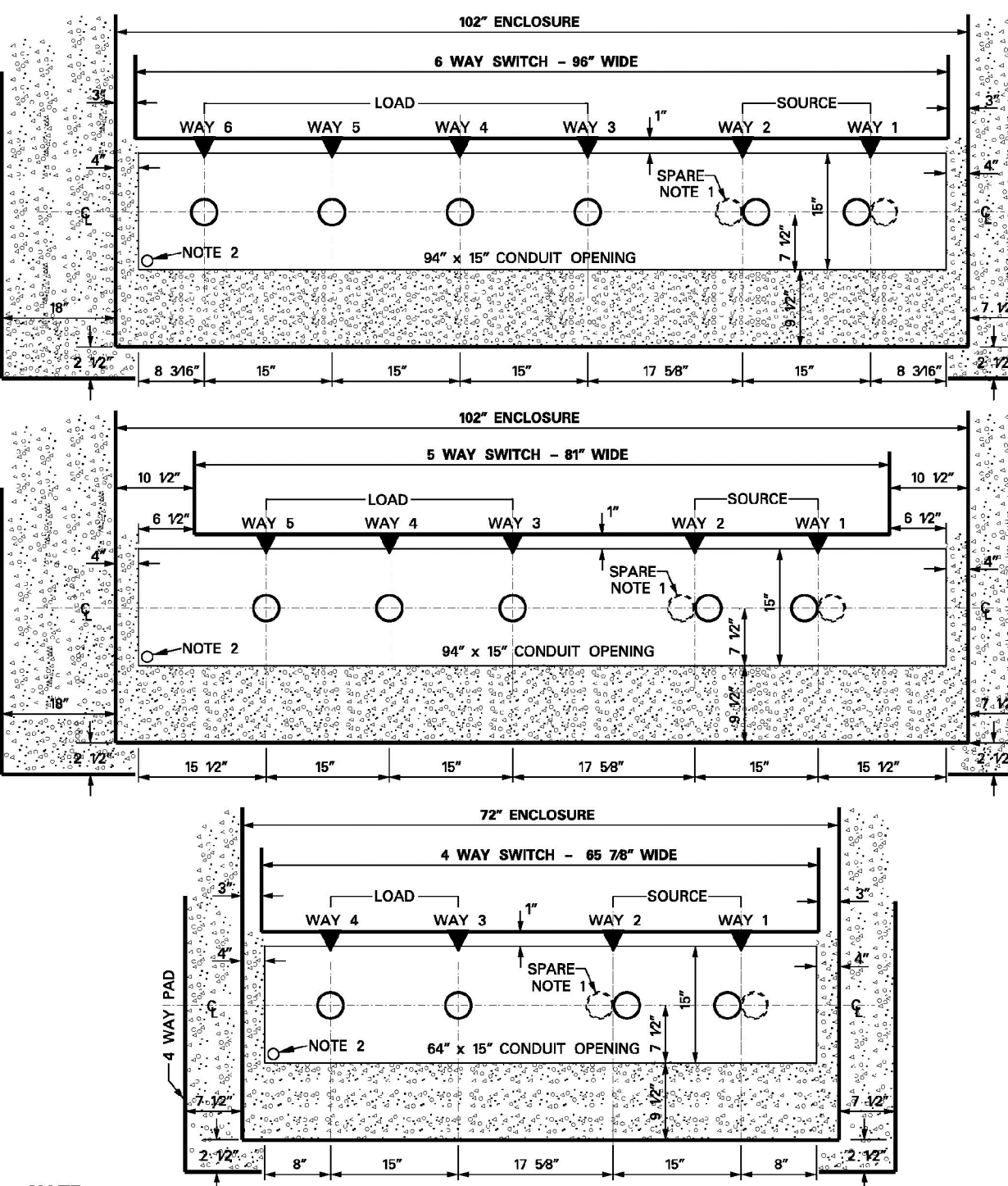


- NOTES:**
- FOR STABILIZATION AND DRAINAGE INSTALL SMALL TO MEDIUM GRAVEL UNDER PAD DEEP WELL.
 - FOR CLEARANCES ON ALL SIDES OF THE SWITCHGEAR SEE REFERENCE DRAWING 202-100.
 - FOR PIER INSTALLATION SEE DRAWING #205-301.
 - LEFT PAD WITH PROVIDED LIFTING POINTS ONLY. SEE LIFTING RINGS INSIDE WALL OF DEEP WELL.
 - CONDUIT NOT TO EXTEND MORE THAN 3" ABOVE BOTTOM OF DEEP WELL.
 - MINIMUM TRENCH DEPTH AT PAD TO TOP OF CONDUIT FOR THE FOLLOWING CONDUITS:
6" CONDUIT - 61"
4" CONDUIT - 47"
2" CONDUIT - 40"
 - REFER TO STANDARD DWG #205-346 FOR CONDUIT LOCATIONS.
 - ADDITIONAL AREA FOR CONTROL CABINET WHEN MOUNTING ATO (AUTO-TRANSFER) OR (RSQ) REMOTE SUPERVISORY CONTROLLED SWITCHGEAR.

ITEM	QTY	DESCRIPTION	TSN/REF	CU	MU
1	1	PAD, PRECAST, 20" DEEP WELL, 4-WAY DEAD FRONT SWITCHGEAR	458291		PPDW25DF
2	1	PAD, PRECAST, 20" DEEP WELL, 5-WAY DEAD FRONT SWITCHGEAR	460221		PPDW25DF6

APPROVED BY ONCOR

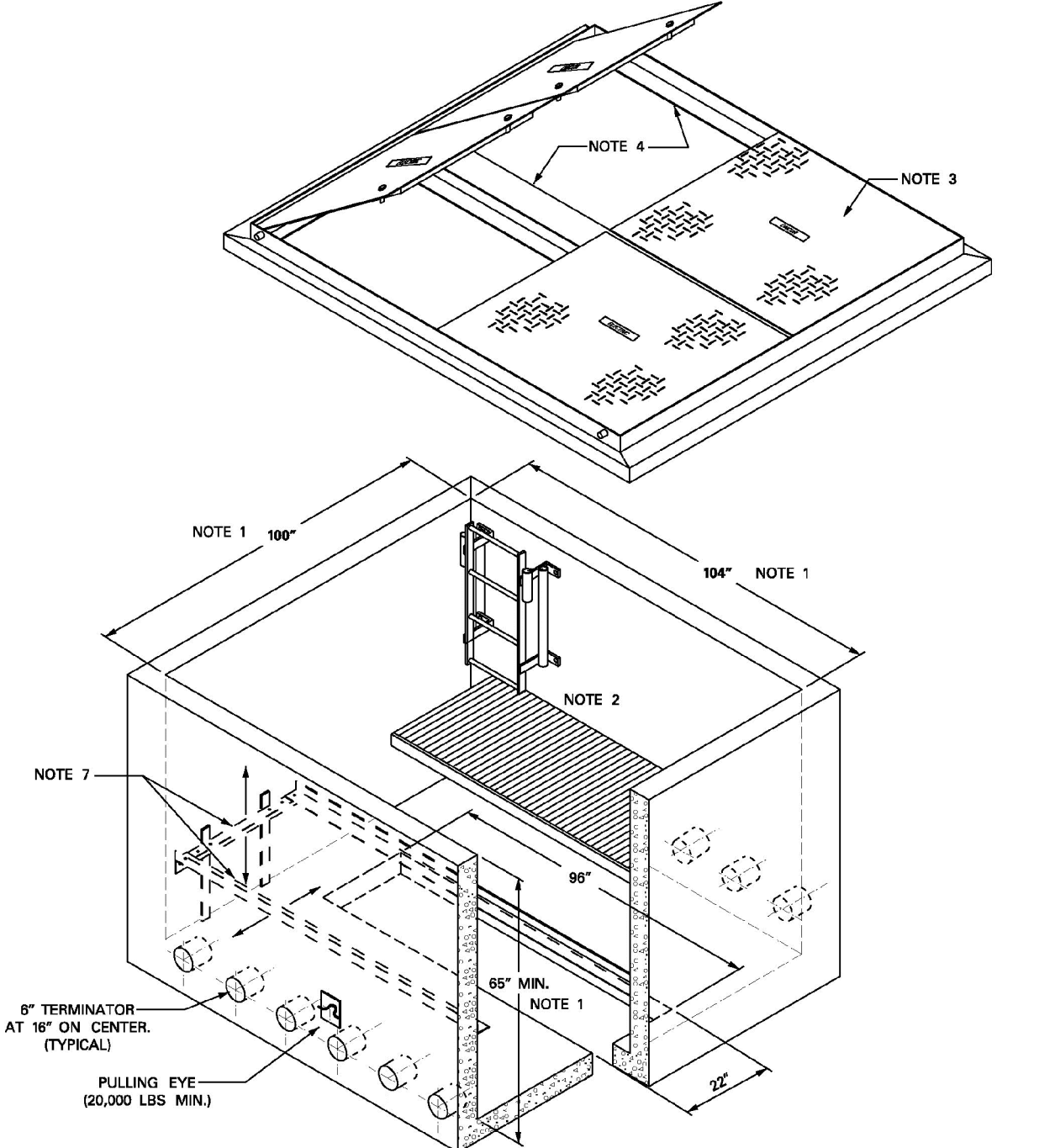
205 - 346 CONDUIT LOCATIONS DEAD FRONT PAD MOUNT 25KV VISTA SWITCHGEAR **205 - 346**



- NOTE:**
- CONDUIT SHALL BE CENTERED ON CENTER BUSHING OF EACH SWITCHED WAY. IF SPARE CONDUIT IS REQUIRED, BOTH SHALL BE CENTERED AS SHOWN ON CENTER BUSHING OF SWITCHED WAY.
 - FOR PADS PLUMBED INTO DUCT BANKS, INSTALL 3" COMMUNICATION CONDUIT FROM MANHOLE TO FRONT LEFT CORNER OF THE CONDUIT OPENING OF PAD.

APPROVED BY ONCOR

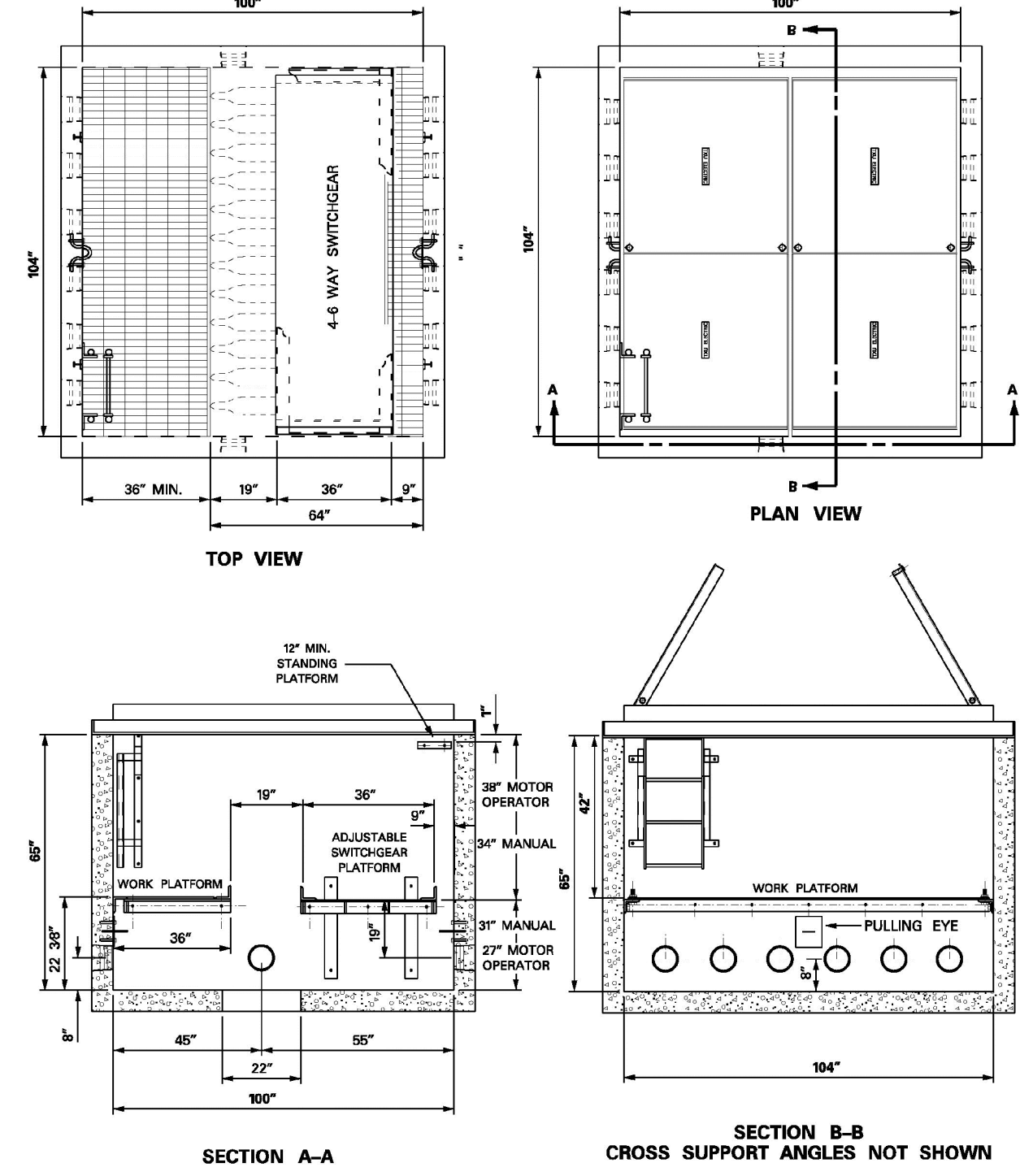
205 - 348 PRECAST VAULT FOR SUBSURFACE DEAD FRONT SWITCHGEAR **205 - 348**



- NOTE:**
- ALL DIMENSIONS SHOWN ARE MINIMUM INSIDE MEASUREMENTS. CONTACT DISTRIBUTION STANDARDS FOR ACTUAL MFG DIMENSIONS.
 - LADDER PLATFORMS, SUPPORT ANGLES AND COVER ARE PRE-INSTALLED.
 - NON-METALLIC TORSION ASSISTED COVERS.
 - REMOVABLE COVER AND SUPPORT BEAM.
 - VERTICAL LOADS TO COVER SHALL NOT EXCEED 16,000 LBS LIVE WHEEL WEIGHT.
 - VAULTS SHALL NOT BE INSTALLED IN LOCATIONS DESIGNATED ACCESSIBLE BY VEHICULAR TRAFFIC.
 - FOURWAY ADJUSTABLE SWITCHGEAR PLATFORM.
 - SEE ONCOR DISTRIBUTION SPECIFICATION #311-220 FOR ADDITIONAL INFORMATION.

APPROVED BY ONCOR

205 - 349 PRECAST VAULT FOR SUBSURFACE DEAD FRONT SWITCHGEAR **205 - 349**



ITEM	QTY	DESCRIPTION	TSN/REF	CU	MU
1	1	VAULT, PRE-CAST, SUBSURFACE, 6 WAY DF SWITCHGEAR	45111		VAULTSWGR
2	1	DRIVEN GROUND (2) DF SWITCHGEAR			GDFS
3					MVSWGR

APPROVED BY ONCOR

NO.	REVISION	BY	DATE

TOWN OF ADDISON
DALLAS COUNTY, TEXAS
PAVING, DRAINAGE & UTILITY IMPROVEMENTS
VITRUVIAN WAY & PONTE AVENUE

DUCT BANK ELECTRIC DETAILS

PROJECT	DESIGN	DRAWN	DATE	FILE	SHEET
5029-01	ICE	ICE	MAY 7 2009	PW# 2009-01	85

icon Consulting Engineers, Inc. 250 W. Southlake Blvd., Suite 117
Civil Engineers - Designers - Planners Southlake, Tx 76092 (817) 552-6210

PAVING, DRAINAGE, & UTILITY IMPROVEMENTS - VITRUVIAN WAY & PONTE AVENUE