



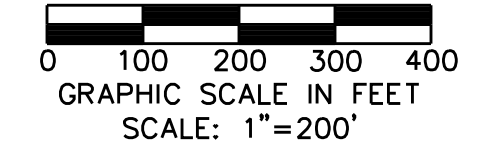
LINE A - SANITARY SEWER DRAINAGE AREA CALCULATIONS

Drainage Area	Area (Acres)	Residential Units	Design Flow (Gal/Day)	Infiltration (Gal/Day)	Total Q (Gal/Day)	Acum Q (MGD)	Notes
B-12	1.00	60	27,000	650	27,650	0.0277	to 8" SS Line "A"
B-22	0.60	36	16,200	390	16,590	0.0442	to 8" SS Line "A"
B-18	0.40	24	10,800	260	11,060	0.0111	to 8" SS Line "A"
B-20	0.50	30	13,500	325	13,825	0.0891	to 8" SS Line "A"
B-19	0.60	36	16,200	390	16,590	0.0166	to 8" SS Line "A"
B-21	0.60	36	16,200	390	16,590	0.1023	to 8" SS Line "A"
D-3	1.10	66	29,700	715	30,415	0.0304	to 8" SS Line "A"
D-7	1.10	66	29,700	715	30,415	0.1631	to 8" SS Line "A"
D-11	1.80	96	43,200	1,040	44,240	0.2074	to 8" SS Line "A"
D-9	0.30	18	8,100	195	8,295	0.0083	to 8" SS Line "A"
D-10	0.20	12	5,400	130	5,530	0.2212	to 8" SS Line "A"
D-18	0.80	48	21,600	520	22,120	0.2433	to 8" SS Line "A"
E-2	1.20	72	32,400	780	33,180	0.0332	to 8" SS Line "A"
D-19	1.40	84	37,800	910	38,710	0.3152	to 8" SS Line "A"
Total	11.40	684	307,800	7,410	315,210	0.3152	to Existing 10" SS Line

LINE B - SANITARY SEWER DRAINAGE AREA CALCULATIONS

Drainage Area	Area (Acres)	Residential Units	Design Flow (Gal/Day)	Infiltration (Gal/Day)	Total Q (Gal/Day)	Acum Q (MGD)	Notes
A-19	1.50	90	40,500	975	41,475	0.0415	to Future 8" SS Line "B"
A-20	0.50	30	13,500	325	13,825	0.0553	to Future 8" SS Line "B"
A-21	1.60	96	43,200	1,040	44,240	0.0995	to Future 8" SS Line "B"
A-22	0.40	24	10,800	260	11,060	0.1106	to Future 8" SS Line "B"
A-23	0.40	24	10,800	260	11,060	0.1217	to Future 8" SS Line "B"
A-24	0.80	48	21,600	520	22,120	0.1438	to Future 8" SS Line "B"
A-25	0.70	42	18,900	455	19,355	0.1531	to Future 8" SS Line "B"
A-26	0.50	30	13,500	325	13,825	0.1770	to Future 8" SS Line "B"
A-27	0.60	36	16,200	390	16,590	0.1936	to Future 8" SS Line "B"
A-10	2.00	120	54,000	1,300	55,300	0.0553	to Future 8" SS Line "B-3"
A-13	0.60	36	16,200	390	16,590	0.0719	to Future 8" SS Line "B-3"
A-17	1.00	60	27,000	650	27,650	0.0995	to Future 8" SS Line "B-3"
A-18	0.70	42	18,900	455	19,355	0.1189	to Future 8" SS Line "B-3"
A-28	0.90	54	24,300	585	24,885	0.0249	to Future 8" SS Line "B-2"
A-29	0.40	24	10,800	260	11,060	0.0359	to Future 8" SS Line "B-2"
C-1	0.40	24	10,800	260	11,060	0.0470	to Future 8" SS Line "B-2"
C-2	0.10	6	2,700	65	2,765	0.0498	to Future 8" SS Line "B-2"
C-3	0.60	36	16,200	390	16,590	0.0664	to Future 8" SS Line "B-2"
C-4	0.30	18	8,100	195	8,295	0.0747	to Future 8" SS Line "B-2"
C-5	0.30	18	8,100	195	8,295	0.0830	to Future 8" SS Line "B-2"
C-6	0.30	18	8,100	195	8,295	0.0912	to Future 8" SS Line "B-2"
C-7	0.80	48	21,600	520	22,120	0.1134	to Future 8" SS Line "B-2"
C-8	1.00	60	27,000	650	27,650	0.1410	to Future 8" SS Line "B-2"
C-9	1.00	60	27,000	650	27,650	0.1687	to Future 8" SS Line "B-2"
C-10	0.80	48	21,600	520	22,120	0.1908	to Future 8" SS Line "B-2"
A-32	1.10	66	29,700	715	30,415	0.5336	to 8" SS Line "B"
A-33	1.00	60	27,000	650	27,650	0.5613	to 8" SS Line "B"
A-30	1.80	108	48,600	1,170	49,770	0.0498	to 8" SS Line "B"
A-31	0.80	48	21,600	520	22,120	0.0719	to 8" SS Line "B"
A-38	1.10	66	29,700	715	30,415	0.6636	to 8" SS Line "B"
B-11	1.00	60	27,000	650	27,650	0.0277	to 8" SS Line "B"
A-34	1.20	72	32,400	780	33,180	0.0608	to 8" SS Line "B"
A-35	0.40	24	10,800	260	11,060	0.0719	to 8" SS Line "B"
A-36	0.40	24	10,800	260	11,060	0.0830	to 8" SS Line "B"
A-37	0.70	42	18,900	455	19,355	0.1023	to 8" SS Line "B"
C-15	2.20	132	59,400	1,430	60,830	0.8267	to 12" SS Line "B"
B-25	0.60	36	16,200	390	16,590	0.9433	to 12" SS Line "B"
B-26	0.60	36	16,200	390	16,590	0.8599	to 12" SS Line "B"
B-27	0.50	30	13,500	325	13,825	0.8737	to 12" SS Line "B"
C-18	1.20	72	32,400	780	33,180	0.9069	to 12" SS Line "B"
C-30	2.60	156	70,200	1,690	71,890	0.9788	to 12" SS Line "B"
C-32	1.40	84	37,800	910	38,710	1.0175	to 12" SS Line "B"
Total	36.80	2208	993,600	23,920	1,017,520	1.0175	to Existing 10" SS Line

 LINE A - SANITARY SEWER DRAINAGE AREA
 LINE B - SANITARY SEWER DRAINAGE AREA




WARNING

CONTRACTOR IS TO CONTACT TEXAS ONE-CALL SYSTEM (1-800-245-4545) OR OTHER UTILITY LOCATING SERVICES AT LEAST 48 HOURS PRIOR TO CONSTRUCTION ACTIVITIES. ICON CONSULTING ENGINEERS, INC. IS NOT RESPONSIBLE FOR KNOWING ALL EXISTING UTILITIES IN THE PROJECT AREA NOR FOR DEPICTING THE EXACT LOCATIONS OF UTILITIES ON THESE DRAWINGS.

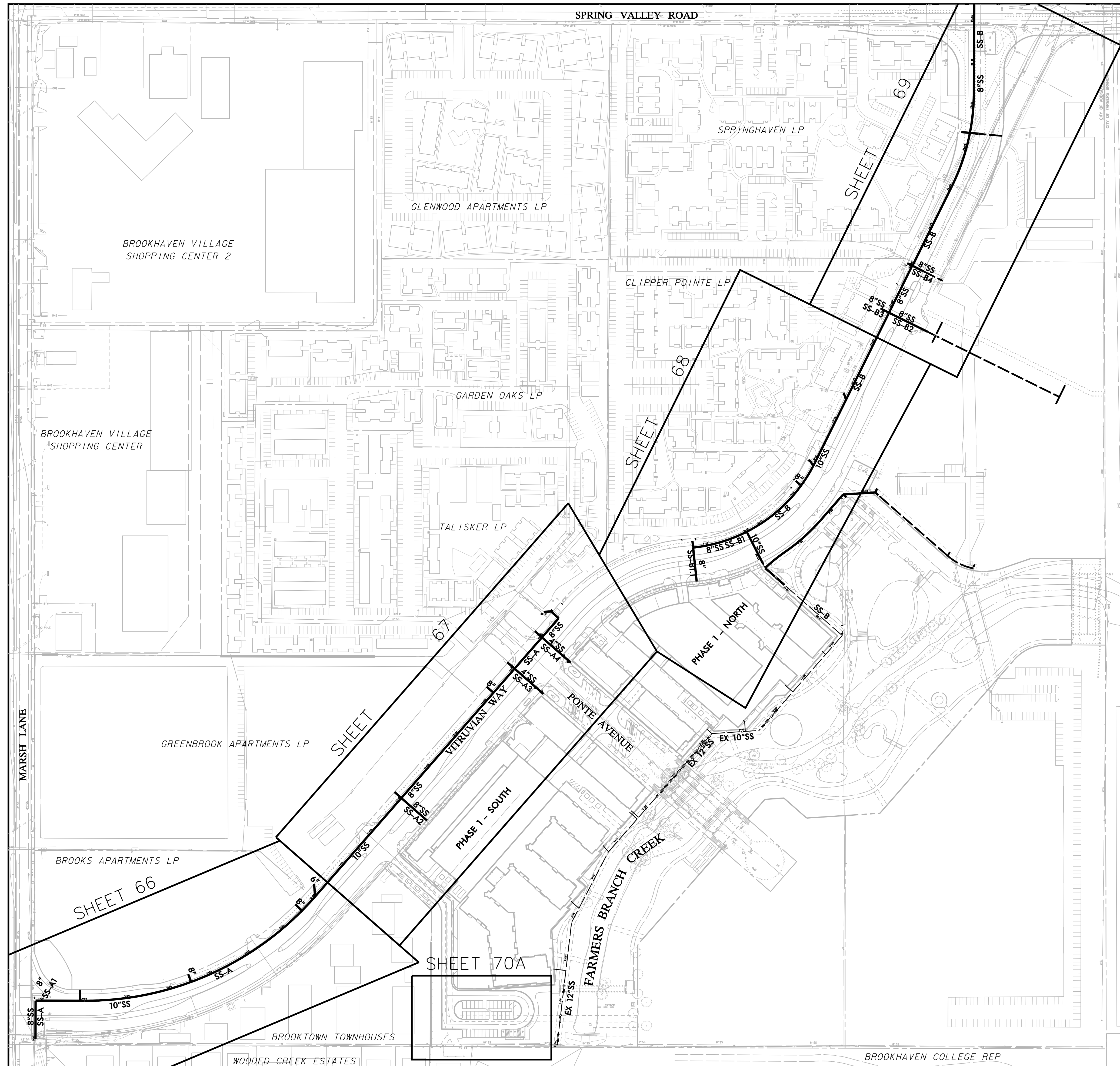
BM #1 REF. ELEVATION = 559.47
 SQUARE CUT IN TOP OF CURB, SOUTH MEDIAN END NOSE, MARSH LANE 1127' NORTH OF VITRUVIAN WAY.
 BM #2 REF. ELEVATION = 547.84
 SQUARE CUT IN TOP OF CURB, NORTH MEDIAN END NOSE, AT INTERSECTION OF VITRUVIAN WAY AND MARSH LANE.



NO.	REVISION	BY	DATE

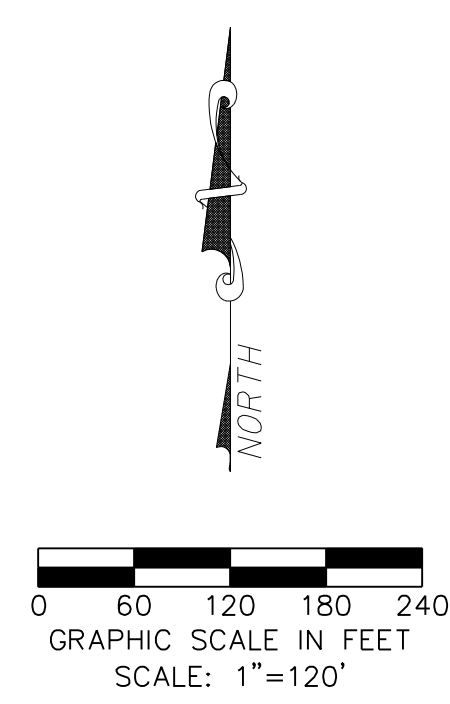
 **TOWN OF ADDISON**
 DALLAS COUNTY, TEXAS
PAVING, DRAINAGE & UTILITY IMPROVEMENTS
 VITRUVIAN WAY & PONTE AVENUE
SANITARY SEWER DRAINAGE AREA MAP
icon Consulting Engineers, Inc.
 Civil Engineers - Designers - Planners
 250 W. Southlake Blvd., Suite 117
 Southlake, Tx 76092 (817) 552-6210
 PROJECT: 5029-01 DESIGN: ICE DRAWN: ICE DATE: MAY 7 2009 FILE: PW# 2009-01 SHEET: 64

PAVING, DRAINAGE, & UTILITY IMPROVEMENTS - VITRUVIAN WAY & PONTE AVENUE



GENERAL WATER & SEWER NOTES:

- REFER TO SHEET 4 "GENERAL CONSTRUCTION NOTES, LEGEND AND ABBREVIATIONS" FOR THE GENERAL CONSTRUCTION NOTES FOR THIS PROJECT.
- ALL WORK SHALL BE PERFORMED IN ACCORDANCE WITH STANDARD SPECIFICATIONS FOR WATER AND SANITARY SEWER CONSTRUCTION AS PUBLISHED BY NORTH CENTRAL TEXAS COUNCIL OF GOVERNMENTS, AND ANY AND ALL AMENDMENTS BY THE TOWN OF ADDISON, AS WELL AS STANDARD CONSTRUCTION DETAILS OF THE TOWN OF ADDISON.
- PRIOR TO COMMENCING CONSTRUCTION, THE TOWN OF ADDISON, THE CONSULTING ENGINEERS, THE SUCCESSFUL CONTRACTOR, UTILITY COMPANIES, AND ANY OTHER AFFECTED PARTIES, SHALL CONVENE FOR A PRE-CONSTRUCTION CONFERENCE AT LEAST 48 HOURS PRIOR TO THE BEGINNING OF CONSTRUCTION.
- THE CONTRACTOR SHALL OBTAIN A RIGHT-OF-WAY PERMIT FROM THE TOWN OF ADDISON PRIOR TO WORKING WITH THE PUBLIC RIGHT-OF-WAY.
- IT IS THE CONTRACTOR'S RESPONSIBILITY TO CONTACT ANY PUBLIC UTILITY COMPANIES FOR LOCATION OF EXISTING FACILITIES IN OR NEAR THE WORK AREAS. THESE INCLUDE, BUT ARE NOT LIMITED TO THE FOLLOWING:
 TOWN OF ADDISON (WATER, SEWER, SIGNALS) ATMOS ENERGY (GAS)
 ONCOR ELECTRIC DELIVERY VERIZON (MC)
 AT&T (SOUTHWESTERN BELL) TIME-WARNER CABLE
- THE CONTRACTOR SHALL PROVIDE SUBMITTALS TO THE ENGINEER (SIX SETS EACH), FOR APPROVAL OF ALL MATERIALS TO BE ADDED TO THE PUBLIC INFRASTRUCTURE, PRIOR TO INCORPORATING MATERIALS INTO THE JOB.
- THE CONTRACTOR SHALL PROVIDE AND SUBMIT TO THE TOWN OF ADDISON (SIX SETS EACH), AN APPROVED TRENCH SAFETY PLAN, SEALED BY A PROFESSIONAL ENGINEER REGISTERED IN THE STATE OF TEXAS, FOR THE INSTALLATION OF UTILITIES GREATER THAN FIVE (5) FEET IN DEPTH.
- THE CONTRACTOR SHALL PROVIDE A MAINTENANCE BOND FOR PUBLIC INFRASTRUCTURE WORK IN THE FOLLOWING AMOUNTS:
 • 100% FOR VALUATIONS LESS THAN OR EQUAL TO \$5,000.
 • \$5,000 FOR VALUATION GREATER THAN \$5,000 AND LESS THAN \$50,000.
 • 10% FOR VALUATIONS GREATER THAN \$50,000.
 BONDS SHALL BE FOR A PERIOD OF TWO YEARS BEGINNING WITH THE DATE OF FINAL ACCEPTANCE BY THE TOWN.
- THE CONTRACTOR SHALL FULLY COMPLY WITH AND SUPPLEMENT AS NECESSARY THE CONDITIONS OF THE STORM WATER POLLUTION PREVENTION PLAN WHILE CONDUCTING HIS ACTIVITIES ON THIS PROJECT.
- THE TOWN OF ADDISON PUBLIC WORKS DEPARTMENT WILL APPROVE AND/OR DETERMINE THE TRAFFIC CONTROL PLAN AND WORKING HOURS. CONTACT THE ASSISTANT CITY ENGINEER OR THE PUBLIC WORKS INSPECTOR AT (972) 450-2871.
- IT SHALL BE THE RESPONSIBILITY OF THE CONTRACTOR TO IMPLEMENT, AND SUPPLEMENT AS NECESSARY, THE TRAFFIC CONTROL MEASURES ON THIS PROJECT INCLUDING PROVIDING ADEQUATE FLAGMEN, SIGNAGE, STRIPING AND WARNING DEVICES, ETC., DURING CONSTRUCTION IN ACCORDANCE WITH THE TEXAS MANUAL OF UNIFORM CONTROL DEVICES. THE CONTRACTOR SHALL MAINTAIN AT LEAST ONE LANE.
- TEMPORARY OR PERMANENT BARRICADES SHALL REMAIN AT ALL POINTS OF INGRESS OR EGRESS TO PREVENT PUBLIC USE UNTIL THE WORK RECEIVES FINAL ACCEPTANCE.
- THE CONTRACTOR SHALL COVER ALL OPEN EXCAVATIONS WITH ANCHORED STEEL PLATING, DURING NON-WORKING HOURS, ALONG EXISTING ROADWAYS AND TRAFFIC AREAS.
- THE CONTRACTOR SHALL BE RESPONSIBLE FOR MAINTAINING ADEQUATE DRAINAGE AT ALL TIMES DURING CONSTRUCTION INCLUDING PROVIDING ALL TEMPORARY STRUCTURES OR IMPROVEMENTS AS NECESSARY FOR THE SAFETY OF THE PUBLIC.
- THE TOWN OF ADDISON WILL PROVIDE A GEOTECHNICAL LABORATORY TO PERFORM APPROPRIATE TESTING DURING CONSTRUCTION ACTIVITIES. ANY TEST THAT FAILS TO MEET CITY REQUIREMENTS SHALL BE RETESTED AT THE CONTRACTOR'S EXPENSE.
- ROUGH GRADING SHALL BE COMPLETED PRIOR TO CONSTRUCTION OF WATER AND SANITARY SEWER FACILITIES.
- THE CONTRACTOR SHALL MAKE NECESSARY PROVISIONS FOR THE SUPPORT AND PROTECTION OF ALL UTILITY POLES, FENCES, TREES, SHRUBS, GAS MAINS, TELEPHONE CABLES, ELECTRIC CABLES, DRAINAGE PIPES, UTILITY SERVICES, AND ALL OTHER UTILITIES AND STRUCTURES BOTH ABOVE AND BELOW THE GROUND, THE COST OF WHICH SHALL BE INCLUDED IN THE CONTRACT AMOUNT.
- THE CONTRACTOR SHALL COORDINATE INSTALLATION OF UTILITIES IN SUCH A MANNER AS TO AVOID CONFLICTS AND TO ASSURE PROPER DEPTHS ARE ACHIEVED. IN THE EVENT OF A CONFLICT BETWEEN WATER LINES AND STORM DRAIN OR SANITARY SEWER PIPING, THE CONTRACTOR SHALL ADJUST THE WATER LINE DOWNWARDS IN SUCH A MANNER SO THAT THE PIPE MANUFACTURER'S RECOMMENDATIONS ON THE PIPE DEFLECTION AND JOINT STRESS ARE NOT EXCEEDED.
- THE CONTRACTOR SHALL VERIFY THE SIZE, TYPE, ELEVATION, CONFIGURATION, AND ANGLE OF EXISTING WATER, SANITARY SEWER AND UTILITY LINES PRIOR TO CONSTRUCTION OF THEIR MATERIALS. THE CONTRACTOR SHALL ASSUME RESPONSIBILITY FOR REPAIRS TO EXISTING FACILITIES DAMAGED BY HIS ACTIVITIES.
- ALL WATER MAIN MATERIALS AND CONSTRUCTION SHALL BE IN ACCORDANCE WITH THE TOWN OF ADDISON'S WATER SYSTEM REQUIREMENTS.
- ALL WATER MAINS TWELVE-INCH (12") DIAMETER AND SMALLER SHALL BE ANSII/AWWA C-900-98 MOLECULARLY ORIENTED PVC PRESSURE PIPE WITH CAST IRON O.D. OR WHEN PIPE PENETRATES WATER VAULT WALLS IT SHALL BE DUCTILE IRON. PIPE JOINTS SHALL BE RUBBER RING AND INTEGRAL THICKENED BELL ASSEMBLED WITH A FACTORY SUPPLIED LUBRICANT. WATER MAINS SHALL HAVE A MINIMUM CLASS RATING OF 150-PSI FOR DOMESTIC USE AND A MINIMUM CLASS RATING OF 200-PSI FOR FIRE LINE APPLICATIONS. JOINT MATERIAL FOR PVC SHALL CONFORM TO ASTM F471.
- EMBEDMENT FOR WATER AND SEWER MAINS SHALL COMPLY WITH NCTCOG CLASS "B" EMBEDMENT OF CRUSHED STONE TO THE SPRING LINE OF THE PIPE, WITH SAND (12" MIN) OVER THE PIPE. A LAYER OF GEO-TEXTILE FABRIC SHALL BE PLACED ON TOP OF THE STONE PRIOR TO THE PLACEMENT OF THE SAND.
- THE MINIMUM COVER TO THE TOP OF THE PIPE MUST VARY WITH THE VALVE STEM. IN GENERAL, THE MINIMUM COVER BELOW THE TOP OF CURB AT STREET TO TOP OF THE PIPE SHOULD BE AS FOLLOWS:
 A. LINES LARGER THAN SIXTEEN-INCH (16") SHALL HAVE A MINIMUM OF SIX FEET (6') OF COVER WHICH IS SUFFICIENT TO ALLOW WATER AND SEWER AND OTHER UTILITIES TO GO OVER THE LARGE MAIN.
 B. SIXTEEN-INCH (16") MAINS SHALL HAVE A MINIMUM COVER OF FIVE FEET (5').
 C. TWELVE-INCH (12") AND SMALLER MAINS SHALL HAVE A MINIMUM COVER OF FOUR FEET (4').
- THE CONTRACTOR SHALL SUPPLY AND INSTALL ANY ADDITIONAL BENDS WITH THRUST BLOCKING AND OTHER APPURTENANCES REQUIRED TO ASSURE PROPER INSTALLATION OF WATER MAINS AND LATERALS. THE CONTRACTOR MAY PULL PIPE AS NEEDED AT THE BENDS WHERE THE DEFLECTION ANGLE OF THE PIPE DOES NOT MATCH THE ANGLE OF THE BEND PROVIDED THE PIPE DEFLECTION IS WITHIN TOLERABLE MANUFACTURERS LIMITS. THE COST FOR ADDITIONAL BENDS AND BLOCKING SHALL BE INCLUDED IN THE CONTRACT AMOUNT.
- ALL VALVES, DUCTILE IRON AND CAST IRON PIPE, FITTINGS AND SPECIALS SHALL BE POLYETHYLENE WRAPPED.
- HORIZONTAL BLOCKING FOR WATER LINES HAS BEEN OMITTED FOR CLARITY; HOWEVER, BLOCKING SHALL BE CONSTRUCTED IN ACCORDANCE WITH THE GOVERNING AUTHORITIES STANDARD DETAILS.
- ALL FITTINGS SHALL BE DUCTILE IRON, FULL BODIED, MECHANICAL JOINT TYPE WITH RESTRAINING GLANDS, AND HAVE A MINIMUM RATED WORKING PRESSURE OF 250 PSI. FITTINGS SHALL BE WRAPPED WITH 8-MIL POLY PRIOR TO BACKFILL.
- ALL VALVES AND FITTINGS SHALL HAVE CONCRETE THRUST BLOCKS INSTALLED. THRUST BLOCKING SHALL BE MINIMUM 3000 PSI CONCRETE AND BE ABLE TO WITHSTAND A MINIMUM 200 PSI TEST PRESSURE.
- THRUST BLOCKING SHALL BE CONSTRUCTED IN ACCORDANCE WITH THE GOVERNING AUTHORITIES STANDARD DETAILS. DO NOT COVER BELLS OR FLANGES WITH CONCRETE. THE CONTRACTOR SHALL REMOVE EXISTING THRUST BLOCKING OR RESTRAINTS WHERE NECESSARY TO ALLOW THE WORK TO PROCEED, AND SHALL REPLACE THE THRUST BLOCKS WHERE REQUIRED. THE COST TO REMOVE, REPLACE OR PROVIDE THRUST BLOCKING SHALL BE INCLUDED IN THE CONTRACT AMOUNT.
- TRACER WIRE SHALL BE PLACED ON PIPE PRIOR TO EMBEDMENT. WIRE SHALL BE #12 PLASTIC COATED COPPER WIRE, TIED TO ALL VALVES AND FIRE HYDRANTS, AND EXTENDING TO SIX (6) INCHES ABOVE FINISHED GRADE ALONG THE OUTSIDE OF ALL VALVE STACKS AND HYDRANTS.
- FINISH BACKFILL SHALL BE NATIVE SOIL FREE OF ALL ROCKS AND CLODS GREATER THAN THREE INCHES IN DIAMETER, COMPACT TO 95% STANDARD PROCTOR OR DENSITY, IN SIX (6) INCH MAXIMUM LOOSE LIFTS, WITH ZERO TO PLUS THREE, OPTIMUM MOISTURE.
- NO PERSON SHALL OPEN, TURN OFF, INTERFERE WITH, ATTACH ANY HOSE TO, OR TAP ANY WATER MAIN BELONGING TO THE TOWN OF ADDISON UNLESS DULY AUTHORIZED TO DO SO BY THE TOWN OF ADDISON PUBLIC WORKS DEPARTMENT (972-450-2871).
- THE CONTRACTOR WILL REMOVE EXISTING WATER METERS NOT USED FOR PROPOSED DEVELOPMENT. REMOVE METERS AND METER LIDS IN A WAY AS TO NOT DAMAGE THE METER OR LID AND DELIVER SALVAGED METERS TO THE TOWN OF ADDISON. CONTRACTOR SHALL KILL EXISTING DEADHEAD SERVICE FOR REMOVED METERS AT THE MAIN LINE.
- THE CONTRACTOR SHALL COMPLETELY REMOVE AND DISPOSE OF EXISTING 8" WATER MAIN AFTER FINAL COMPLETION AND ACCEPTANCE OF NEW 12" WATER MAIN.
- THE CONTRACTOR SHALL REPLACE EXISTING SERVICE LINES DESIGNATED TO REMAIN, FROM EXISTING METERS TO NEW WATER MAIN WITH NEW COPPER (TYPE K ONLY) LINES. NEW SIZES TO BE THE SAME AS EXISTING, WITH A MINIMUM OF 3/4" DIAMETER.
- ALL WASTEWATER MAIN PIPING SHALL MEET THE EXTRA STRENGTH REQUIREMENTS OF ASTM SPECIFICATION D3034 (SDR-35). PIPE SHALL HAVE THE BELL AND SPIGOT TYPE JOINTS, CONSISTING OF INTEGRAL WALL SECTION WITH FACTORY INSTALLED COMPRESSION RUBBER RING GASKET, SECURELY LOCKED IN BELL GROOVE TO PROVIDE POSITIVE SEAL UNDER ALL INSTALLATION CONDITIONS. PIPE SHALL BE LAID WITH THE BELL END ON THE UPSTREAM SIDE.
- ALL SEWER MANHOLES WITH PRESSURE TYPE FRAME AND COVERS SHALL HAVE THE INTERIOR SURFACE COATED WITH AN EPOXY COATING (RAVEN 405 OR APPROVED EQUAL), MINIMUM 40 MILS THICKNESS, INSTALLED PER MANUFACTURER'S SPECIFICATIONS.
- ALL EXISTING AND PROPOSED IMPROVEMENTS (VALVES, MANHOLES, FIRE HYDRANTS, WATER METERS, ETC.) SHALL BE ADJUSTED TO FINAL FINISHED GRADE BY THE CONTRACTOR.
- THE CONTRACTOR SHALL STAMP A 2-INCH "W" AND A 2-INCH "S" IN THE CURB AT THE LOCATION OF THE WATER AND SEWER SERVICE LINES RESPECTIVELY. A 2-INCH "C" SHALL MARK CONDUITS CROSSING PAVEMENT, AND A 2-INCH "V" SHALL MARK WATER VALVES WITH THE "POINT" OF THE "V" TOWARD THE VALVE.
- WATERLINES SHALL BE TESTED BOTH BACTERIOLOGICALLY AND HYDROSTATICALLY. WATER MAINS SHALL BE HYDROSTATICALLY TESTED AT 150 PSI FOR FOUR (4) HOURS. FIRE LINES SHALL BE HYDROSTATICALLY TESTED AT 200 PSI FOR (2) HOURS. ALL BLEEDER LINES SHALL BE REMOVED UPON COMPLETION OF TESTING BY REMOVING THE CORPORATION STOP AND INSTALLING A BRASS PLUG. HEAVILY CHLORINATED WATER (8.8 MG/L OR GREATER FREE CHLORINE) RESULTING FROM WATER LINE STERILIZATION SHALL BE DIRECTED TO THE SANITARY SEWER AFTER THE MANDATORY CHLORINE RETENTION TIME (USUALLY 24 HOURS UNLESS OTHERWISE NOTED).
- ALL WASTEWATER MAINS SHALL BE CAMERA INSPECTED BY THE CONTRACTOR AFTER THE INSTALLATION OF ALL UTILITIES AND PRIOR TO FINAL ACCEPTANCE OF NEW WASTEWATER FACILITIES.
- THE CONTRACTOR SHALL PROVIDE VERIFICATION OF COMPLETION AND COMPLIANCE OF ALL REQUIRED TESTS (PRESSURE, BACTERIOLOGICAL, BACKFLOW, VACUUM, MANDEREL, VHS VIDEO OF SANITARY SEWER, ETC.) TO THE TOWN OF ADDISON.
- THE CONTRACTOR SHALL CALL (972) 450-2847 TO REQUEST A FINAL WALK-THROUGH INSPECTION OF THE PUBLIC INFRASTRUCTURE WORK.
- ANY ADJACENT PROPERTIES AFFECTED BY THE CONSTRUCTION SHALL BE RESTORED TO PRE-CONSTRUCTION CONDITIONS, OR BETTER.
- BLUE REFLECTORIZED BUTTONS ARE TO BE INSTALLED IN THE CENTER OF THE DRIVE LANE NEAREST THE OUTSIDE CURB OPPOSITE ALL FIRE HYDRANTS.



NO.	REVISION	BY	DATE

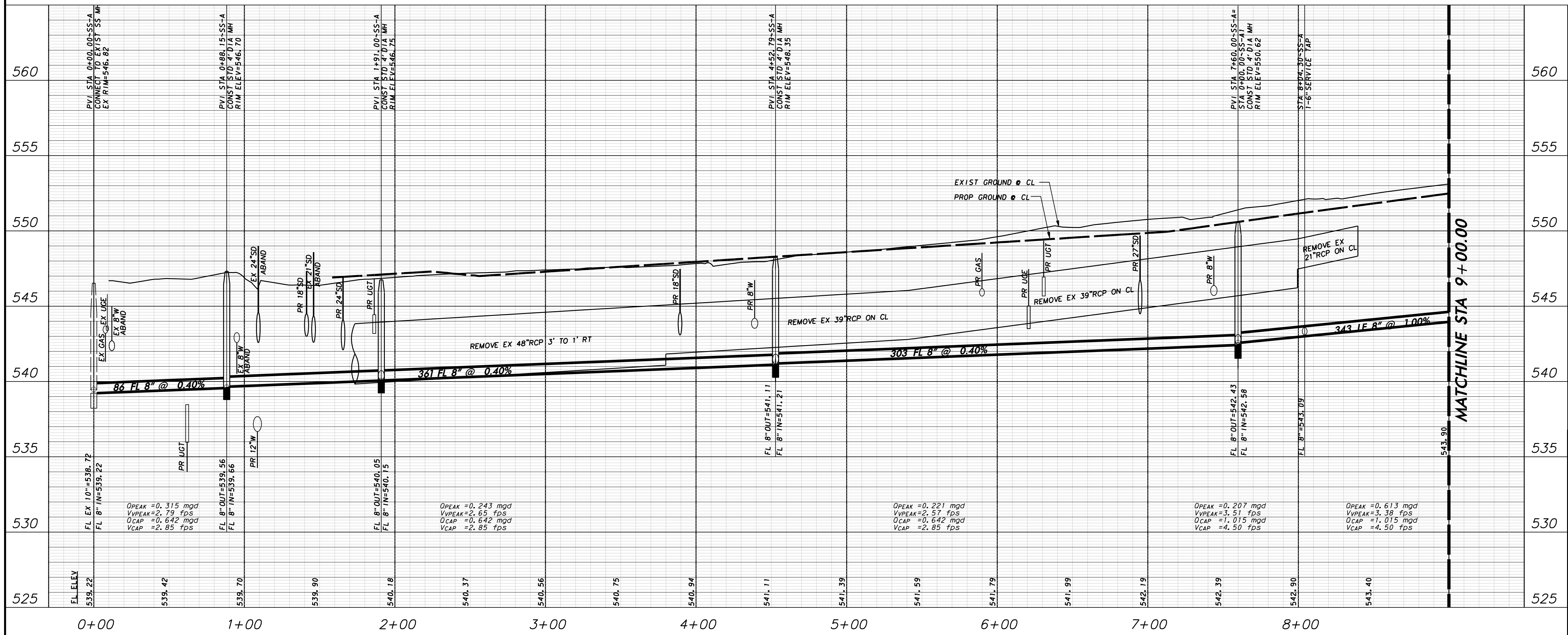
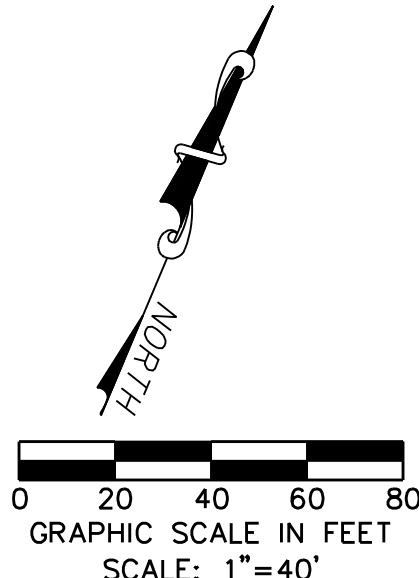
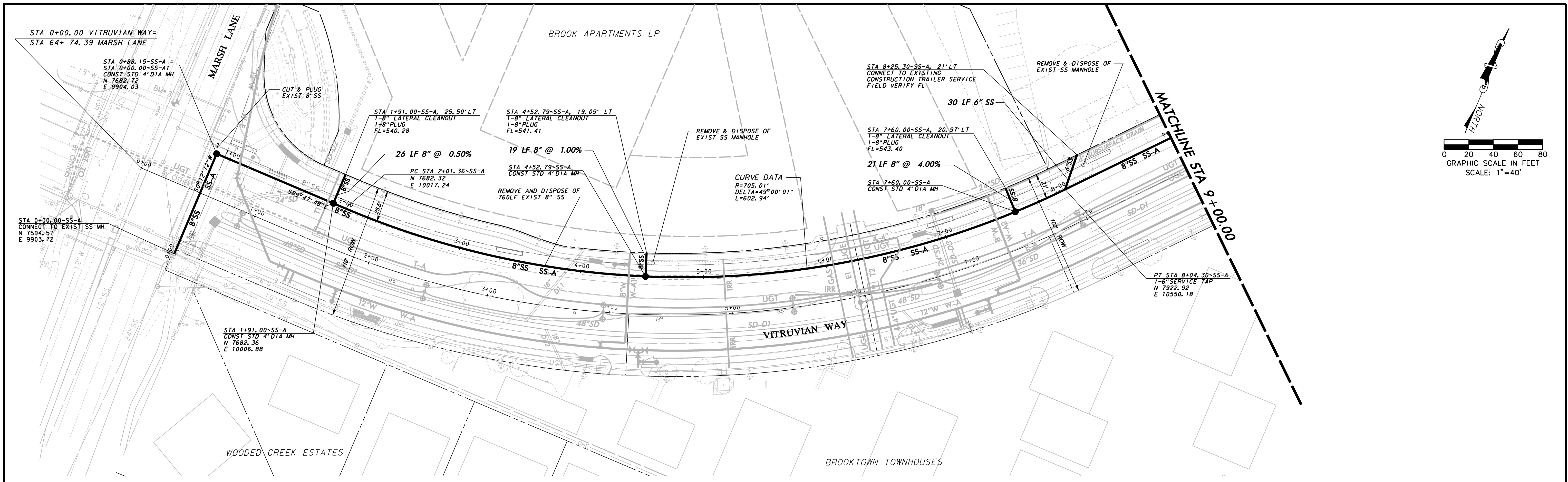
Addison! TOWN OF ADDISON
DALLAS COUNTY, TEXAS

PAVING, DRAINAGE & UTILITY IMPROVEMENTS
VITRUVIAN WAY & PONTE AVENUE

OVERALL SANITARY SEWER LAYOUT & NOTES

icon Consulting Engineers, Inc. Civil Engineers - Designers - Planners	250 W. Southlake Blvd., Suite 117 Southlake, Tx 76092 (817) 552-6210				
PROJECT: 5029-01	DESIGN: ICE	DRAWN: ICE	DATE: MAY 7 2009	FILE: PW# 2009-01	SHEET: 65

PAVING, DRAINAGE, & UTILITY IMPROVEMENTS - VITRUVIAN WAY & PONTE AVENUE

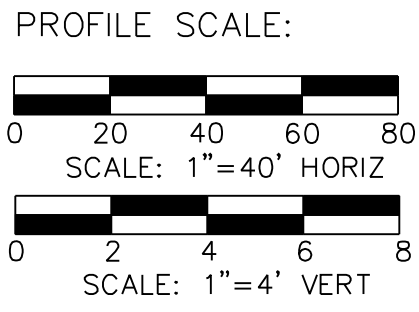


WARNING

CONTRACTOR IS TO CONTACT TEXAS ONE-CALL SYSTEM (1-800-245-4545) OR OTHER UTILITY LOCATING SERVICES AT LEAST 48 HOURS PRIOR TO CONSTRUCTION ACTIVITIES. ICON CONSULTING ENGINEERS, INC. IS NOT RESPONSIBLE FOR KNOWING ALL EXISTING UTILITIES IN THE PROJECT AREA NOR FOR DEPICTING THE EXACT LOCATIONS OF UTILITIES ON THESE DRAWINGS.

BM #1 REF. ELEVATION = 559.47
 SQUARE CUT IN TOP OF CURB, SOUTH MEDIAN END NOSE, MARSH LANE
 1127' NORTH OF VITRUVIAN WAY.

BM #2 REF. ELEVATION = 547.84
 SQUARE CUT IN TOP OF CURB, NORTH MEDIAN END NOSE, AT INTERSECTION
 OF VITRUVIAN WAY AND MARSH LANE.



NO.	REVISION	BY	DATE

Addison! TOWN OF ADDISON
 DALLAS COUNTY, TEXAS

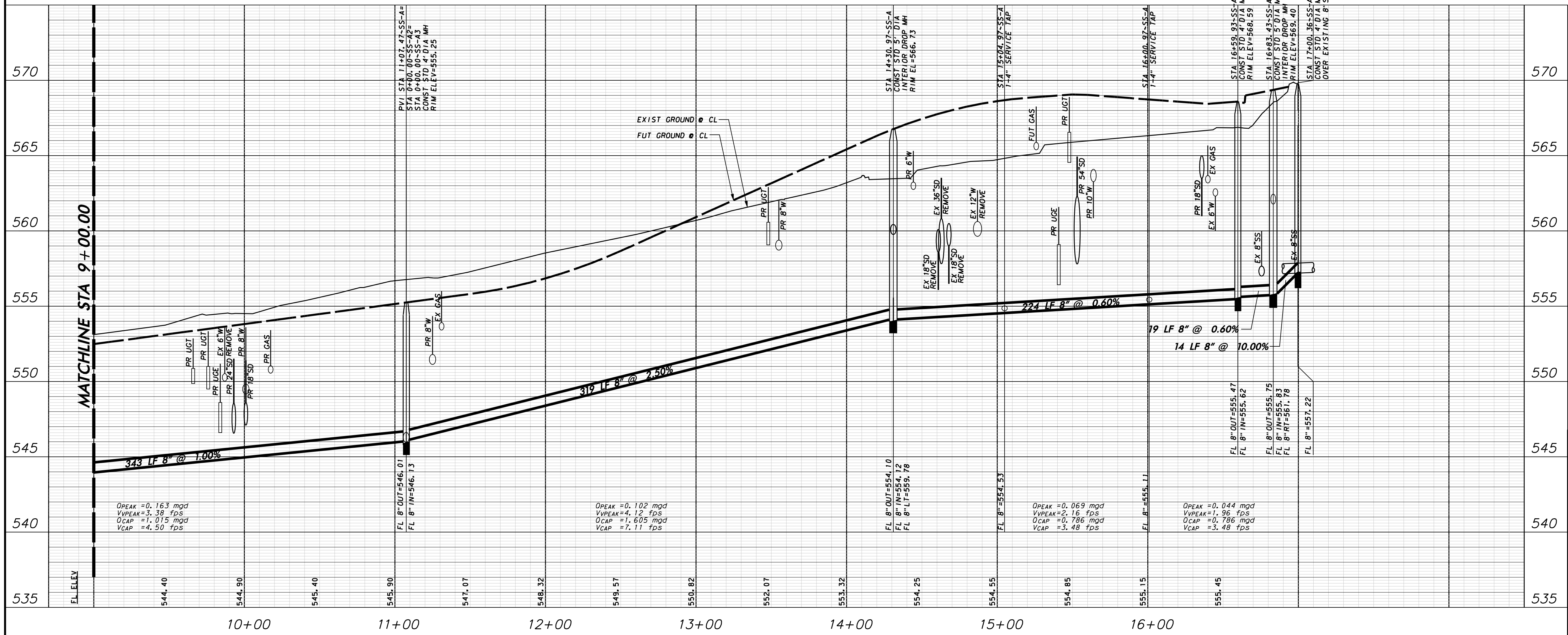
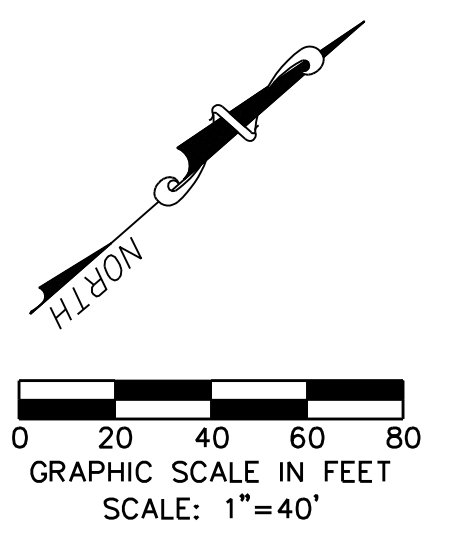
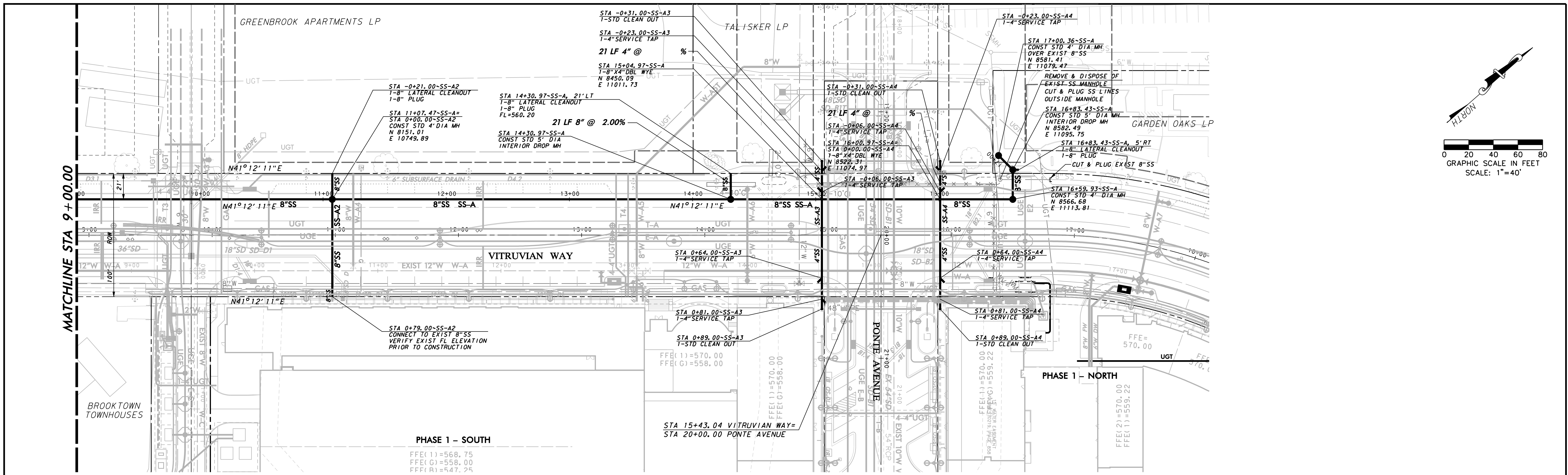
PAVING, DRAINAGE & UTILITY IMPROVEMENTS
 VITRUVIAN WAY & PONTE AVENUE

SANITARY SEWER PLAN & PROFILE-VW
 LINE A-STA. 0+00.00 TO 9+00.00

icon Consulting Engineers, Inc. 250 W. Southlake Blvd., Suite 117
 Civil Engineers - Designers - Planners Southlake, Tx 76092 (817) 552-6210

PROJECT	DESIGN	DRAWN	DATE	FILE	SHEET
5029-01	ICE	ICE	MAY 7 2009	PW# 2009-01	66

PAVING, DRAINAGE, & UTILITY IMPROVEMENTS - VITRUVIAN WAY & PONTE AVENUE

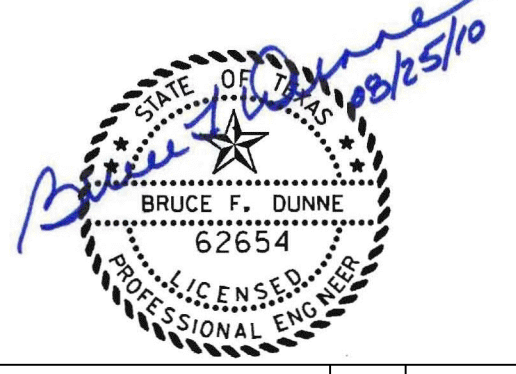
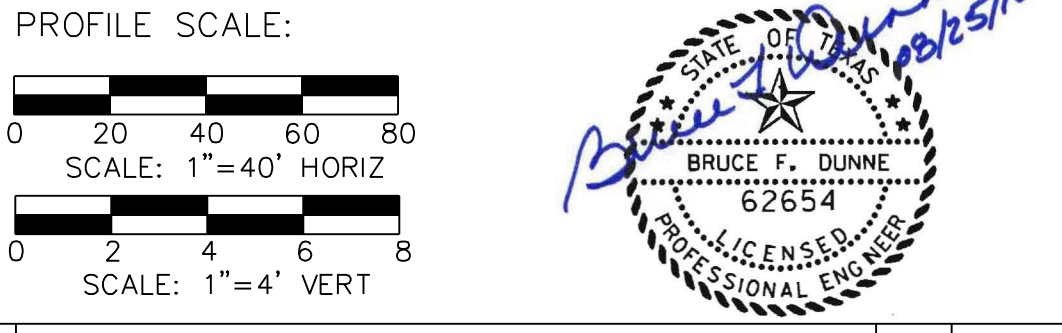


WARNING

CONTRACTOR IS TO CONTACT TEXAS ONE-CALL SYSTEM (1-800-245-4545) OR OTHER UTILITY LOCATING SERVICES AT LEAST 48 HOURS PRIOR TO CONSTRUCTION ACTIVITIES. ICON CONSULTING ENGINEERS, INC. IS NOT RESPONSIBLE FOR KNOWING ALL EXISTING UTILITIES IN THE PROJECT AREA NOR FOR DEPICTING THE EXACT LOCATIONS OF UTILITIES ON THESE DRAWINGS.

BM #1 REF. ELEVATION = 559.47
 SQUARE CUT IN TOP OF CURB, SOUTH MEDIAN END NOSE, MARSH LANE 1127' NORTH OF VITRUVIAN WAY.

BM #2 REF. ELEVATION = 547.84
 SQUARE CUT IN TOP OF CURB, NORTH MEDIAN END NOSE, AT INTERSECTION OF VITRUVIAN WAY AND MARSH LANE.



NO.	REVISION	BY	DATE

Addison! TOWN OF ADDISON
 DALLAS COUNTY, TEXAS

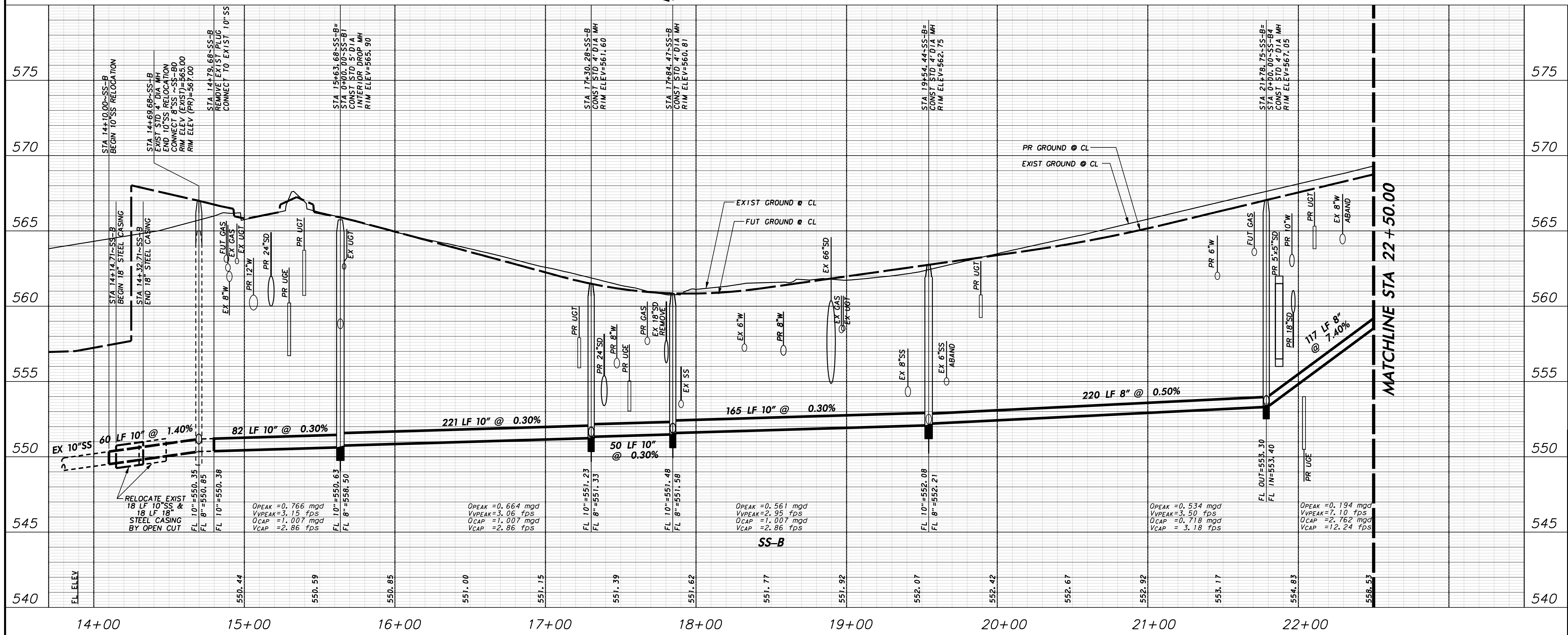
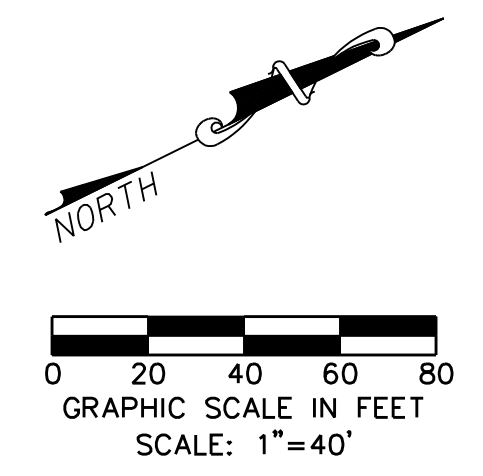
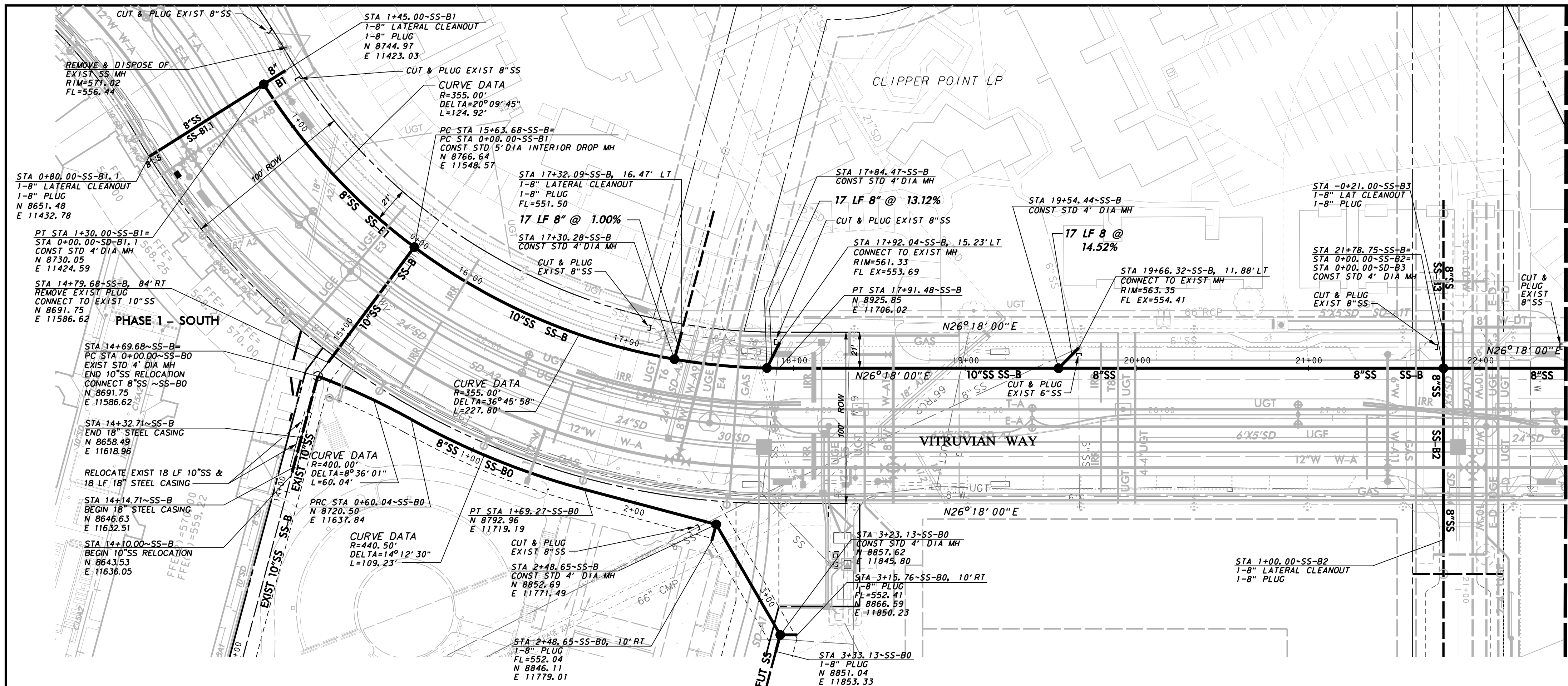
PAVING, DRAINAGE & UTILITY IMPROVEMENTS
 VITRUVIAN WAY & PONTE AVENUE

SANITARY SEWER PLAN & PROFILE-VW
 LINE A-STA. 9+00.00 TO 16+29.46

icon Consulting Engineers, Inc. 250 W. Southlake Blvd., Suite 117
 Civil Engineers - Designers - Planners Southlake, TX 76092 (817) 552-6210

PROJECT	DESIGN	DRAWN	DATE	FILE	SHEET
5029-01	ICE	ICE	MAY 7 2009	PW# 2009-01	67

PAVING, DRAINAGE, & UTILITY IMPROVEMENTS - VITRUVIAN WAY & PONTE AVENUE



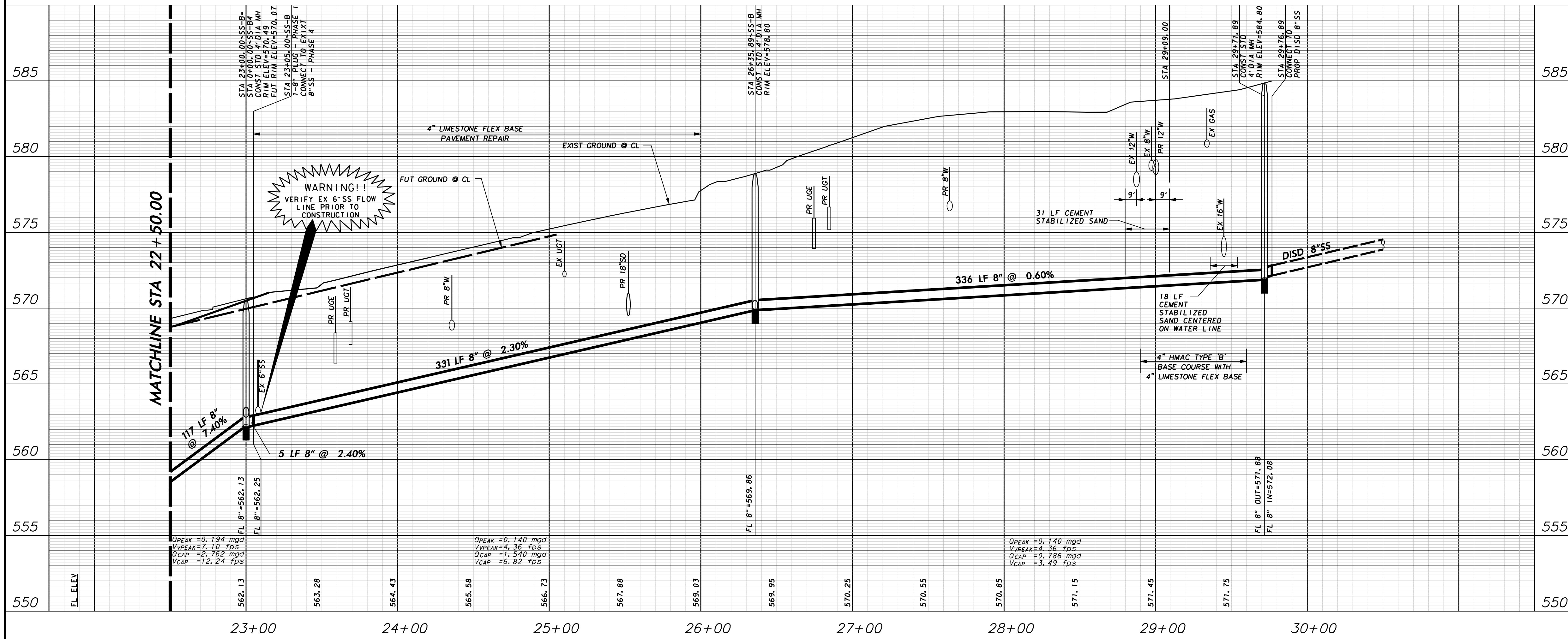
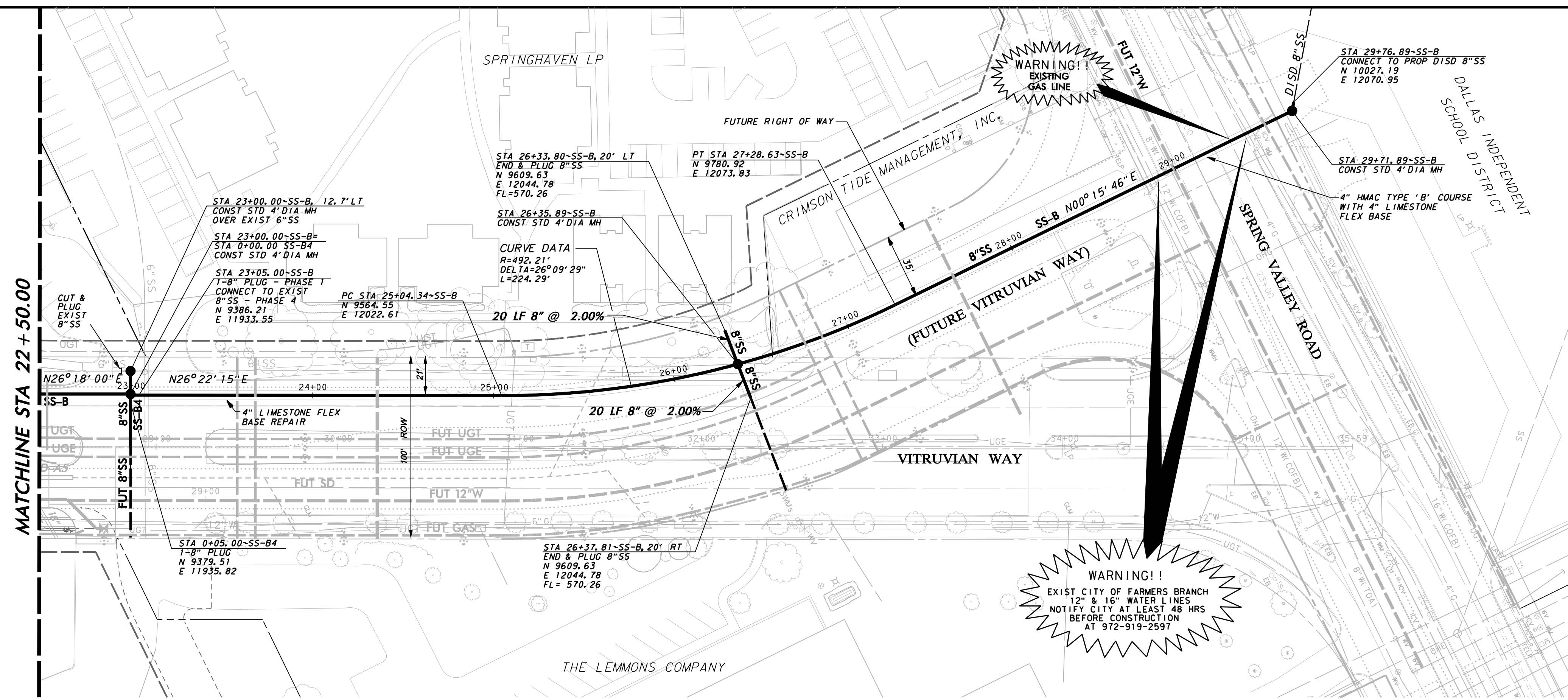
WARNING
 CONTRACTOR IS TO CONTACT TEXAS ONE-CALL SYSTEM (1-800-245-4545) OR OTHER UTILITY LOCATING SERVICES AT LEAST 48 HOURS PRIOR TO CONSTRUCTION ACTIVITIES. ICON CONSULTING ENGINEERS, INC. IS NOT RESPONSIBLE FOR KNOWING ALL EXISTING UTILITIES IN THE PROJECT AREA NOR FOR DEPICTING THE EXACT LOCATIONS OF UTILITIES ON THESE DRAWINGS.

BM #1 REF. ELEVATION = 559.47
 SQUARE CUT IN TOP OF CURB, SOUTH MEDIAN END NOSE, MARSH LANE 1127' NORTH OF VITRUVIAN WAY.
 BM #2 REF. ELEVATION = 547.84
 SQUARE CUT IN TOP OF CURB, NORTH MEDIAN END NOSE, AT INTERSECTION OF VITRUVIAN WAY AND MARSH LANE.



NO.		REVISION		BY		DATE	
<p>Addison! TOWN OF ADDISON DALLAS COUNTY, TEXAS</p> <p>PAVING, DRAINAGE & UTILITY IMPROVEMENTS VITRUVIAN WAY & PONTE AVENUE</p> <p>SANITARY SEWER PLAN & PROFILE-VW LINE B-STA. 14+79.68 TO 22+50.00</p> <p>icon Consulting Engineers, Inc. 250 W. Southlake Blvd., Suite 117 Civil Engineers - Designers - Planners Southlake, Tx 76092 (817) 552-6210</p>							
PROJECT	DESIGN	DRAWN	DATE	FILE	SHEET		
5029-01	ICE	ICE	MAY 7 2009	PW# 2009-01	68		

PAVING, DRAINAGE, & UTILITY IMPROVEMENTS - VITRUVIAN WAY & PONTE AVENUE



WARNING
 CONTRACTOR IS TO CONTACT TEXAS ONE-CALL SYSTEM (1-800-245-4545) OR OTHER UTILITY LOCATING SERVICES AT LEAST 48 HOURS PRIOR TO CONSTRUCTION ACTIVITIES. ICON CONSULTING ENGINEERS, INC. IS NOT RESPONSIBLE FOR KNOWING ALL EXISTING UTILITIES IN THE PROJECT AREA NOR FOR DEPICTING THE EXACT LOCATIONS OF UTILITIES ON THESE DRAWINGS.

BM #1 REF. ELEVATION = 559.47
 SQUARE CUT IN TOP OF CURB, SOUTH MEDIAN END NOSE, MARSH LANE 1127' NORTH OF VITRUVIAN WAY.
 BM #2 REF. ELEVATION = 547.84
 SQUARE CUT IN TOP OF CURB, NORTH MEDIAN END NOSE, AT INTERSECTION OF VITRUVIAN WAY AND MARSH LANE.

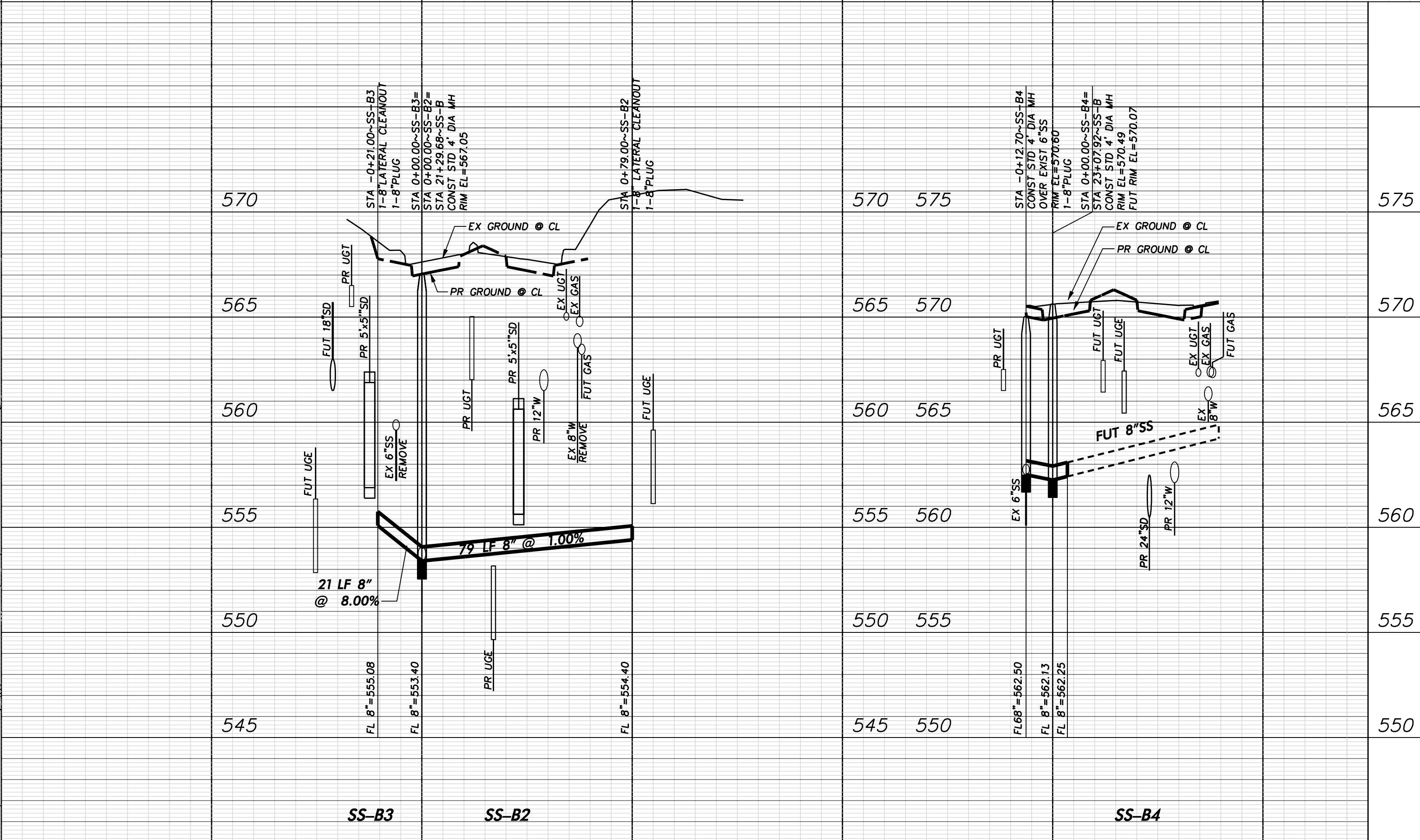
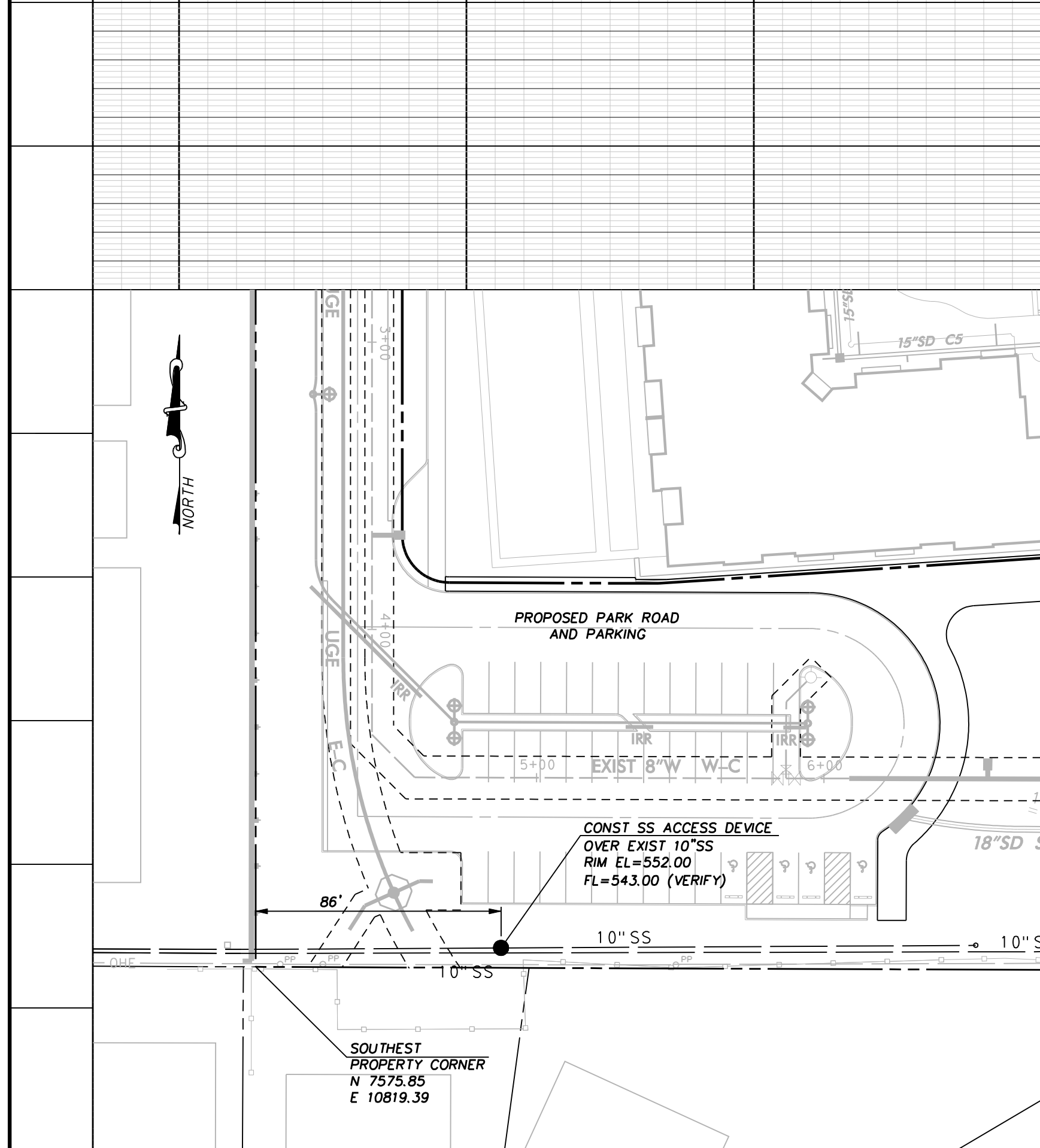
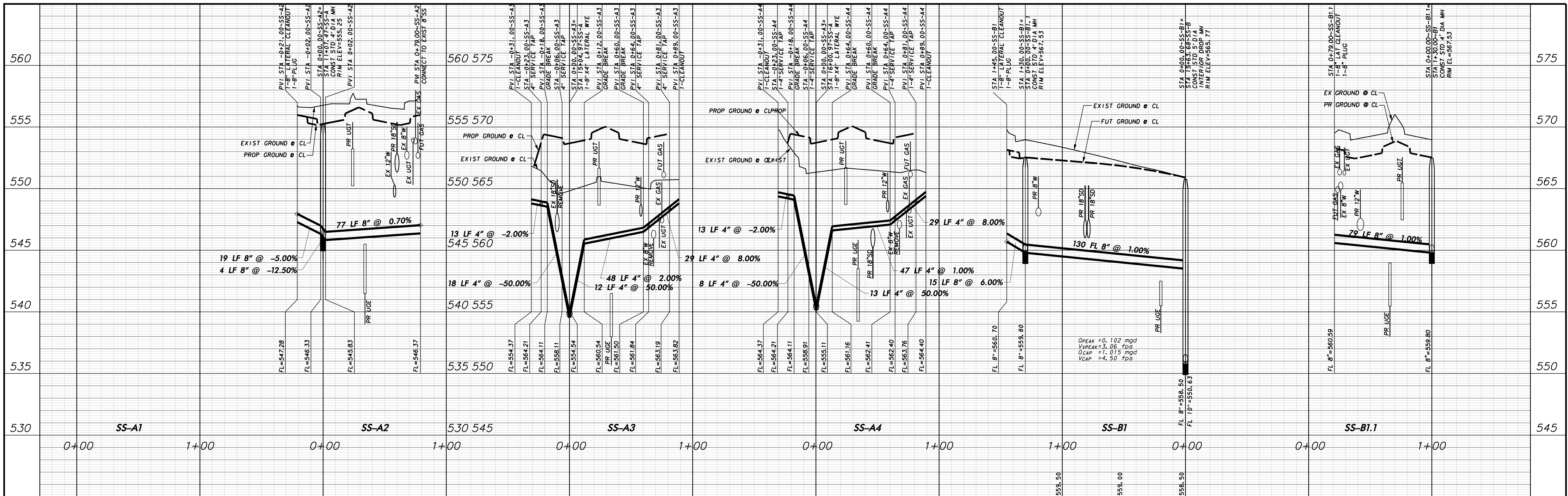
PROFILE SCALE:
 0 20 40 60 80
 SCALE: 1"=40' HORIZ
 0 2 4 6 8
 SCALE: 1"=4' VERT



Addison! TOWN OF ADDISON
 DALLAS COUNTY, TEXAS
 PAVING, DRAINAGE & UTILITY IMPROVEMENTS
 VITRUVIAN WAY & PONTE AVENUE

SANITARY SEWER PLAN & PROFILE-VW
 LINE B-STA. 22+50.00 TO 29+76.89

icon Consulting Engineers, Inc.		250 W. Southlake Blvd., Suite 117 Southlake, TX 76092 (817) 552-6210	
PROJECT	DESIGN	DRAWN	DATE
5029-01	ICE	ICE	MAY 7 2009
FILE	SHEET		
PW# 2009-01	69		



WARNING

CONTRACTOR IS TO CONTACT TEXAS ONE-CALL SYSTEM (1-800-245-4545) OR OTHER UTILITY LOCATING SERVICES AT LEAST 48 HOURS PRIOR TO CONSTRUCTION ACTIVITIES. ICON CONSULTING ENGINEERS, INC. IS NOT RESPONSIBLE FOR KNOWING ALL EXISTING UTILITIES IN THE PROJECT AREA NOR FOR DEPICTING THE EXACT LOCATIONS OF UTILITIES ON THESE DRAWINGS.

BM #1 REF. ELEVATION = 559.47
SQUARE CUT IN TOP OF CURB, SOUTH MEDIAN END NOSE, MARSH LANE 1127' NORTH OF VITRUVIAN WAY.

BM #2 REF. ELEVATION = 547.84
SQUARE CUT IN TOP OF CURB, NORTH MEDIAN END NOSE, AT INTERSECTION OF VITRUVIAN WAY AND MARSH LANE.

PROFILE SCALE:

 SCALE: 1" = 40' HORIZ

 SCALE: 1" = 4' VERT

ADDISON
TOWN OF ADDISON
DALLAS COUNTY, TEXAS

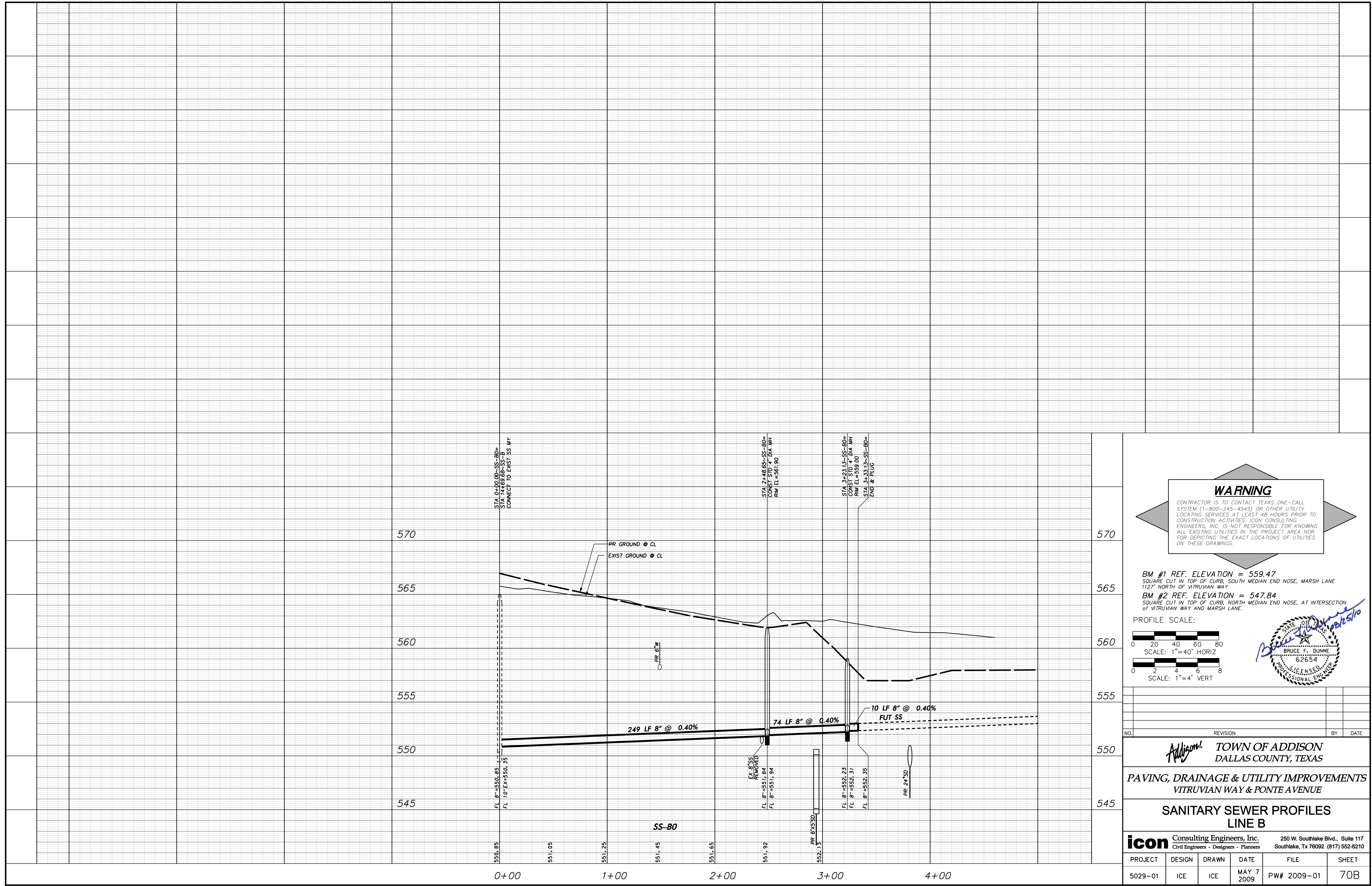
PAVING, DRAINAGE & UTILITY IMPROVEMENTS
VITRUVIAN WAY & PONTE AVENUE

SANITARY SEWER PROFILES
LINES A & B

icon Consulting Engineers, Inc. 250 W. Southlake Blvd., Suite 117
Civil Engineers - Designers - Planners Southlake, Tx 76092 (817) 552-6210

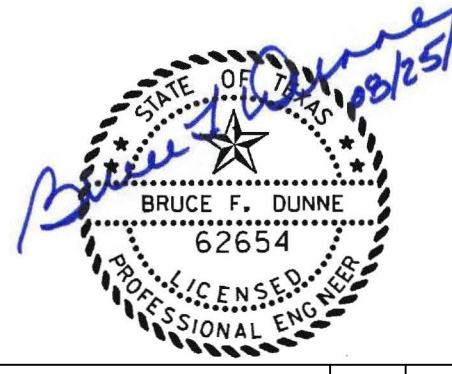
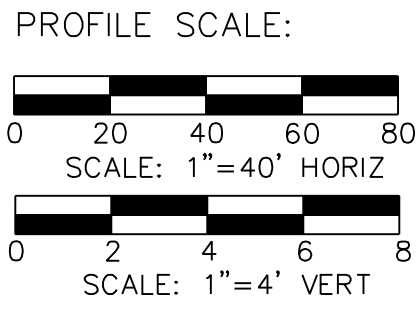
PROJECT	DESIGN	DRAWN	DATE	FILE	SHEET
5029-01	ICE	ICE	MAY 7 2009	PW# 2009-01	70A

PAVING, DRAINAGE, & UTILITY IMPROVEMENTS - VITRUVIAN WAY & PONTE AVENUE



WARNING
 CONTRACTOR IS TO CONTACT TEXAS ONE-CALL SYSTEM (1-800-245-4545) OR OTHER UTILITY LOCATING SERVICES AT LEAST 48 HOURS PRIOR TO CONSTRUCTION ACTIVITIES. ICON CONSULTING ENGINEERS, INC. IS NOT RESPONSIBLE FOR KNOWING ALL EXISTING UTILITIES IN THE PROJECT AREA NOR FOR DEPICTING THE EXACT LOCATIONS OF UTILITIES ON THESE DRAWINGS.

BM #1 REF. ELEVATION = 559.47
 SQUARE CUT IN TOP OF CURB, SOUTH MEDIAN END NOSE, MARSH LANE 1127' NORTH OF VITRUVIAN WAY.
BM #2 REF. ELEVATION = 547.84
 SQUARE CUT IN TOP OF CURB, NORTH MEDIAN END NOSE, AT INTERSECTION OF VITRUVIAN WAY AND MARSH LANE.



NO.	REVISION	BY	DATE

Addison! TOWN OF ADDISON
 DALLAS COUNTY, TEXAS

PAVING, DRAINAGE & UTILITY IMPROVEMENTS
 VITRUVIAN WAY & PONTE AVENUE

**SANITARY SEWER PROFILES
 LINE B**

icon Consulting Engineers, Inc. 250 W. Southlake Blvd., Suite 117
 Civil Engineers - Designers - Planners Southlake, Tx 76092 (817) 552-6210

PROJECT	DESIGN	DRAWN	DATE	FILE	SHEET
5029-01	ICE	ICE	MAY 7 2009	PW# 2009-01	70B

PAVING, DRAINAGE, & UTILITY IMPROVEMENTS - VITRUVIAN WAY & PONTE AVENUE