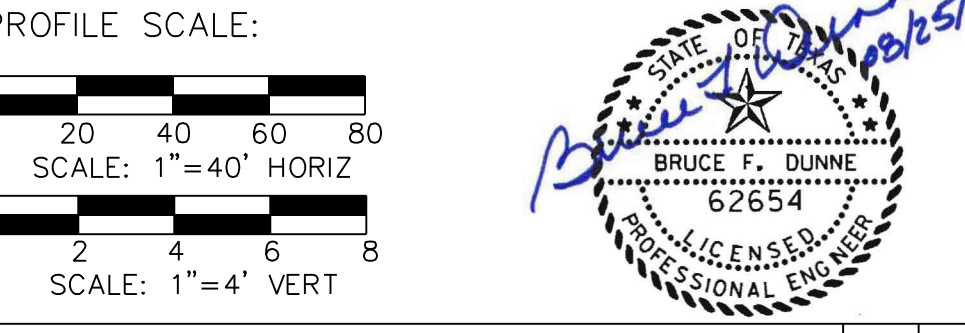


BM #1 REF. ELEVATION = 559.47
 SQUARE CUT IN TOP OF CURB, SOUTH MEDIAN END NOSE, MARSH LANE 1127' NORTH OF VITRUVIAN WAY.
 BM #2 REF. ELEVATION = 547.84
 SQUARE CUT IN TOP OF CURB, NORTH MEDIAN END NOSE, AT INTERSECTION OF VITRUVIAN WAY AND MARSH LANE.



Addison! TOWN OF ADDISON
 DALLAS COUNTY, TEXAS

PAVING, DRAINAGE & UTILITY IMPROVEMENTS
 VITRUVIAN WAY & PONTE AVENUE

SANITARY SEWER PLAN & PROFILE-VW
 LINE B-STA. 14+79.68 TO 22+50.00

icon Consulting Engineers, Inc.
 Civil Engineers - Designers - Planners
 250 W. Southlake Blvd., Suite 117
 Southlake, TX 76092 (817) 552-6210

PROJECT	DESIGN	DRAWN	DATE	FILE	SHEET
5029-01	ICE	ICE	MAY 7 2009	PW# 2009-01	68

PAVING, DRAINAGE, & UTILITY IMPROVEMENTS - VITRUVIAN WAY & PONTE AVENUE