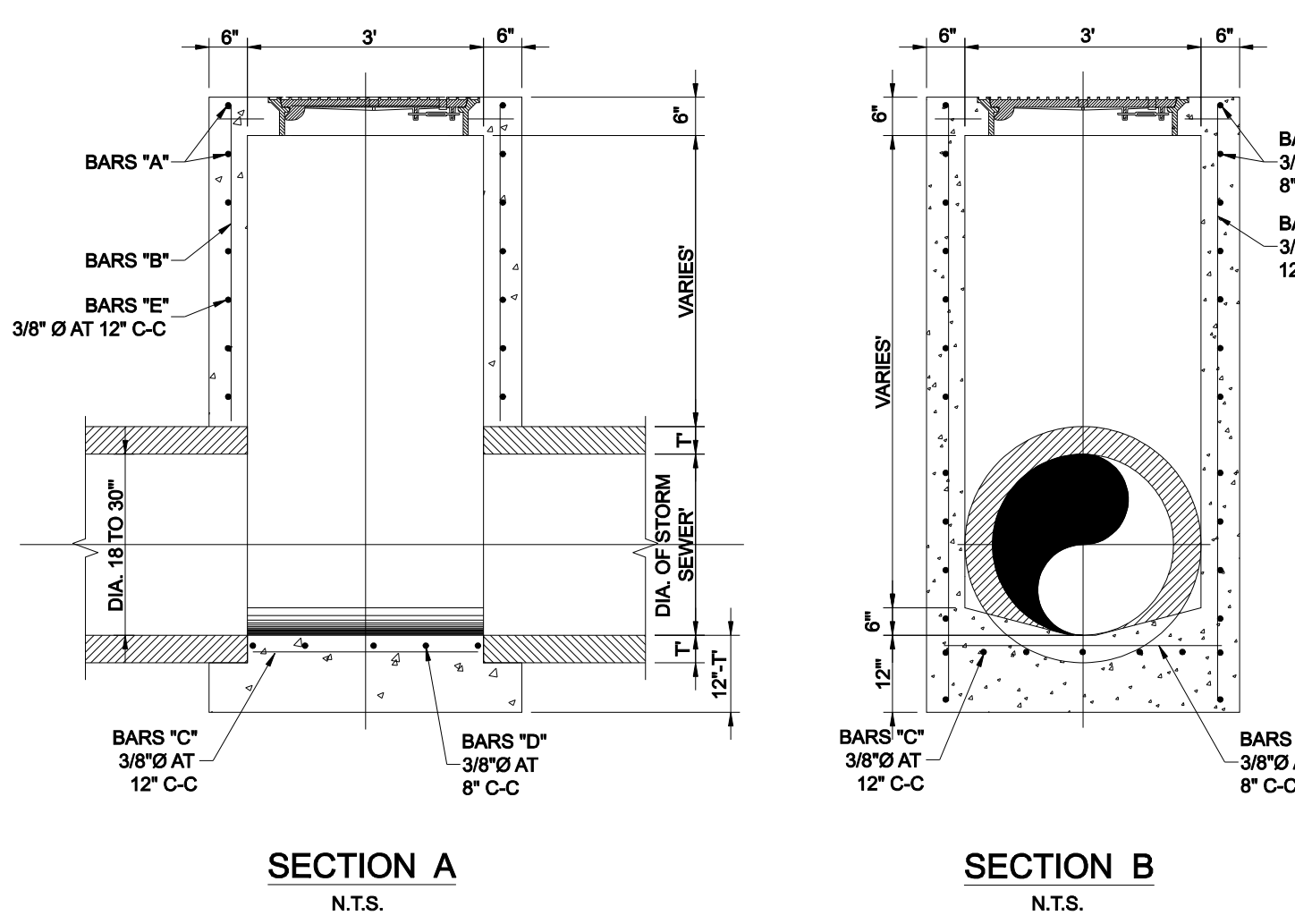
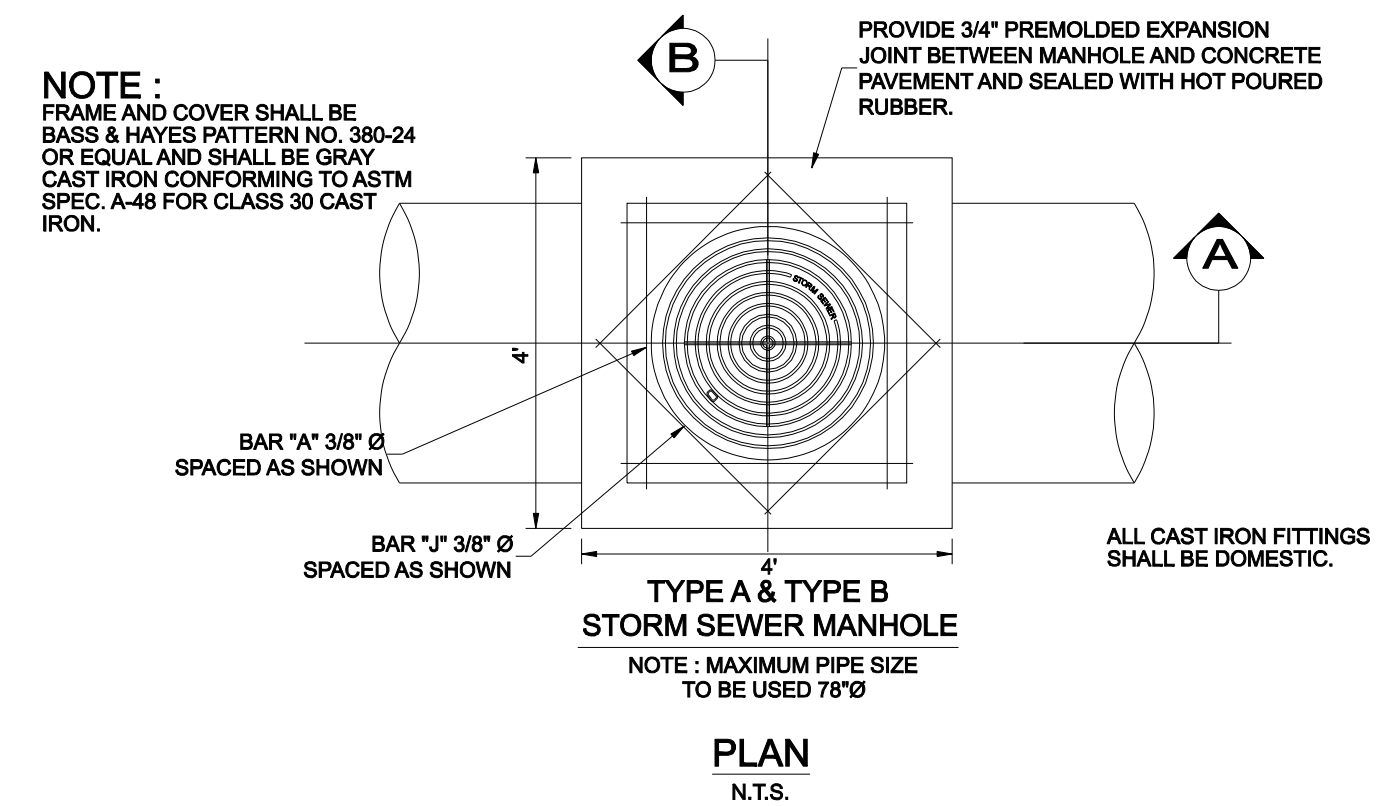


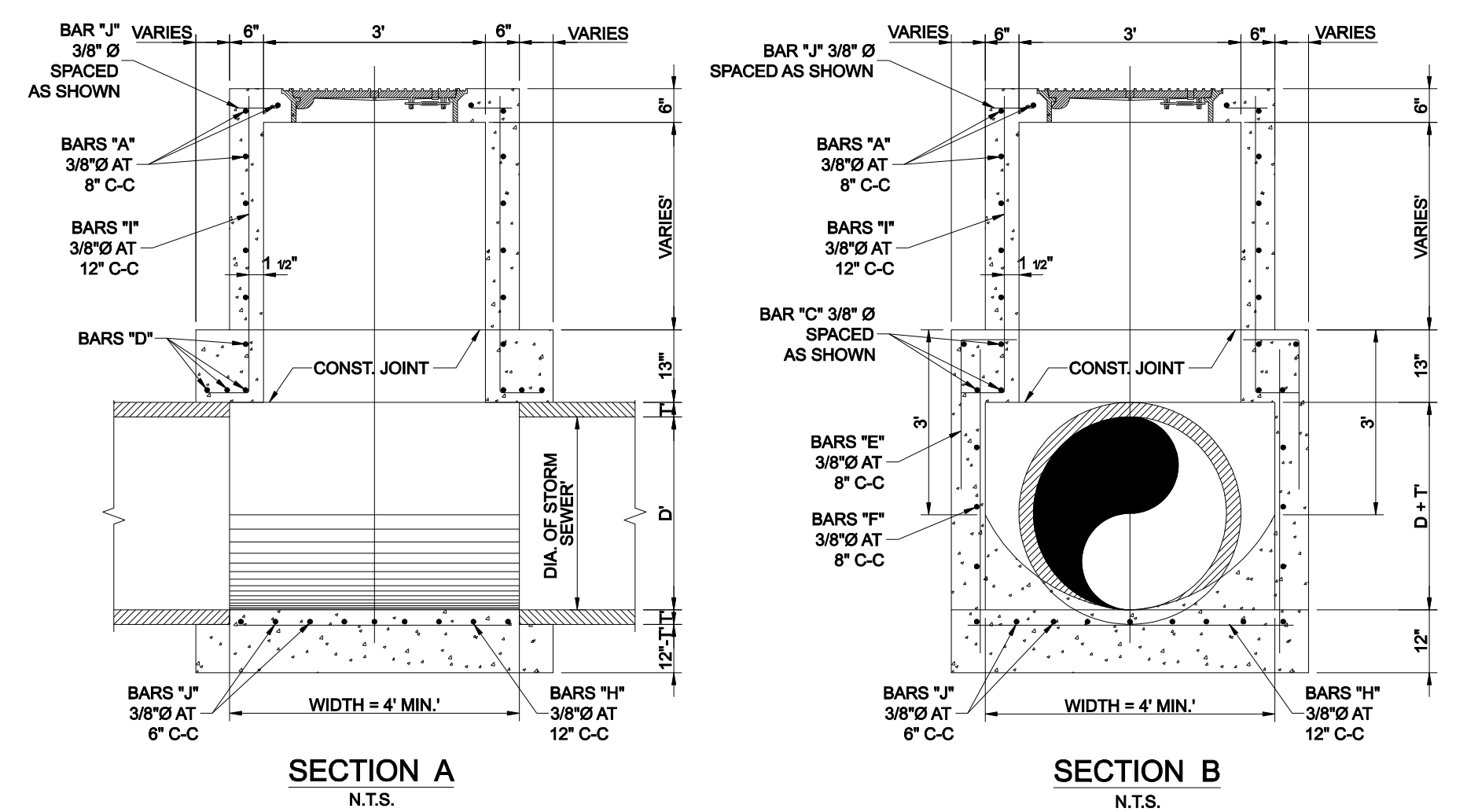
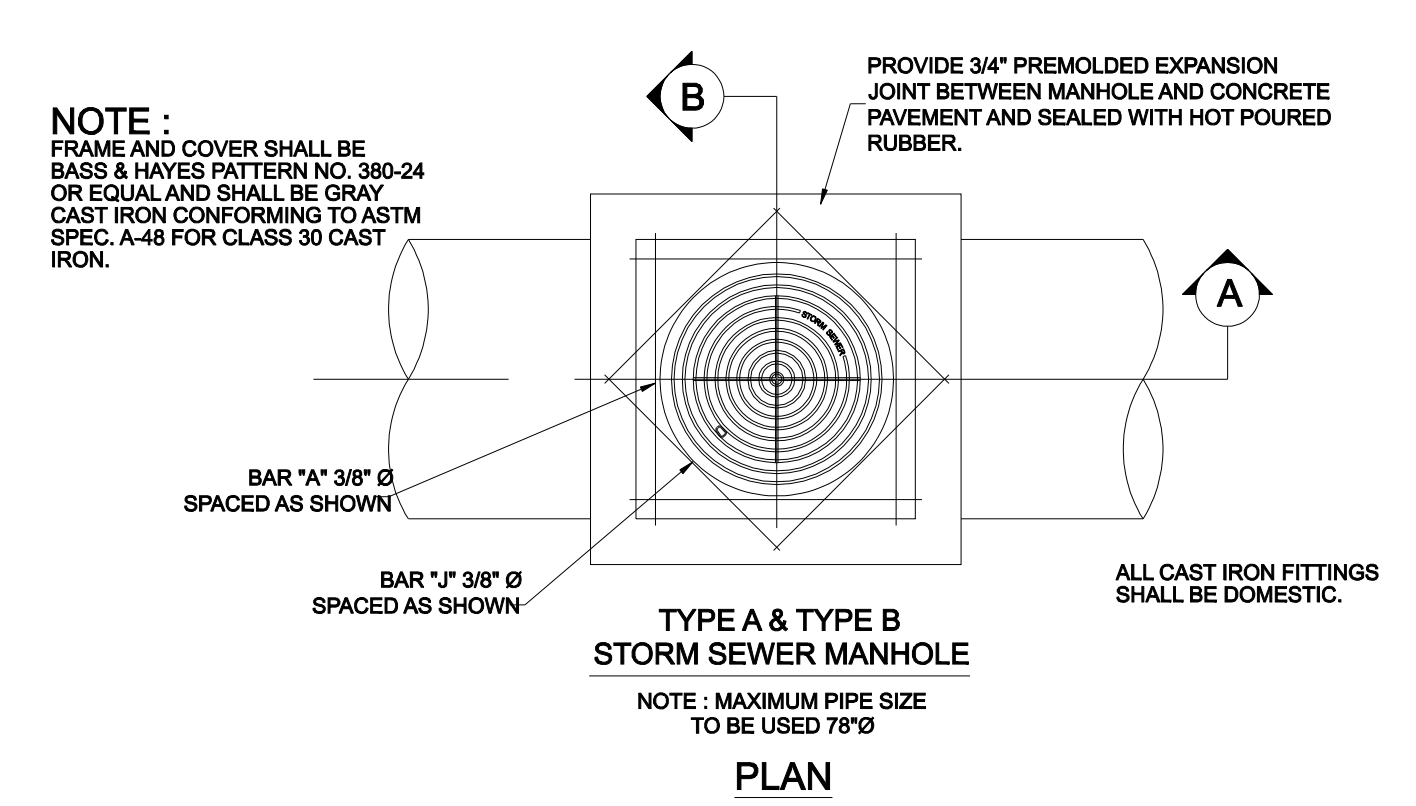
LOAD RATING HEAVY DUTY	COATING DIPPED	ESTIMATED WEIGHT COVER: 193 LBS FRAME: 151 LBS	MATERIAL SPECIFICATION COVER - GRAY IRON ASTM A48 CL35B FRAME - GRAY IRON ASTM A48 CL35B
---------------------------	-------------------	--	--

DESIGNATES MACHINE SURFACE

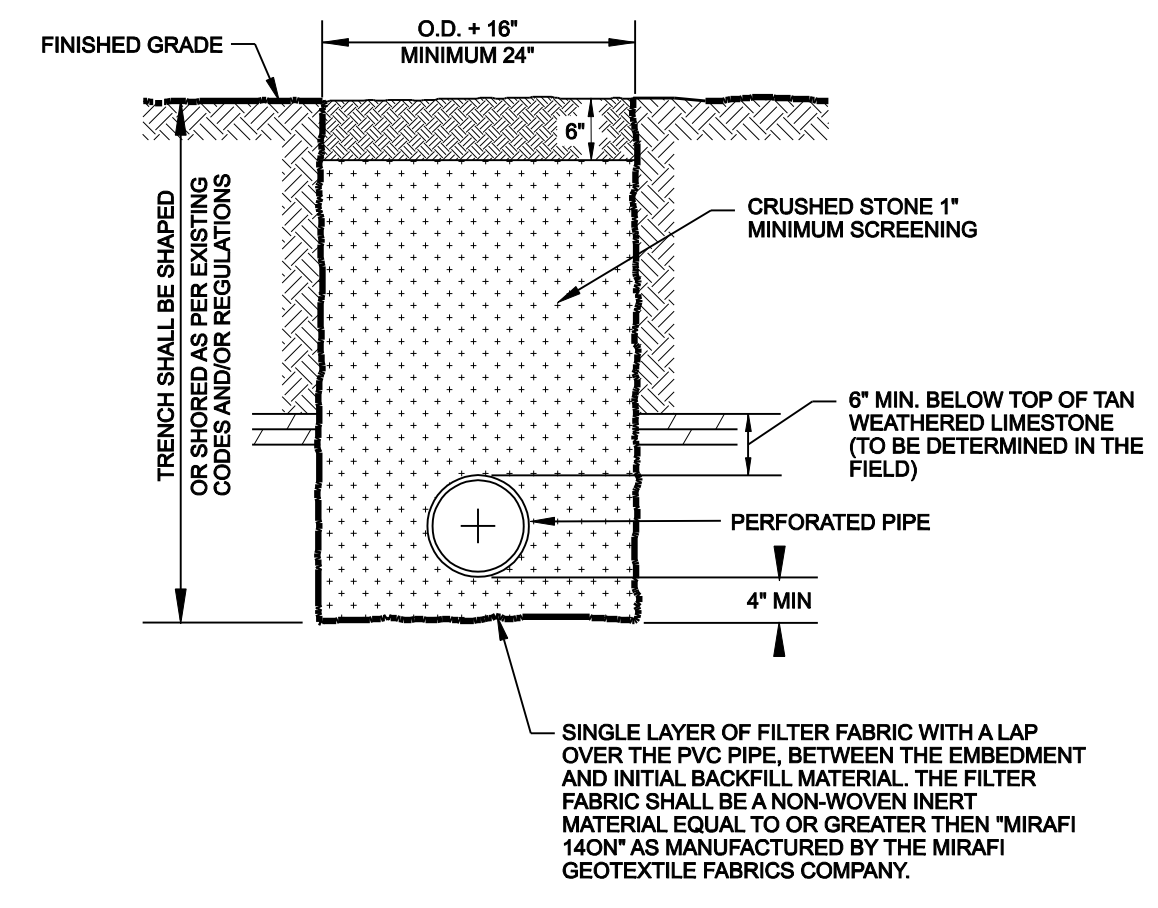
CAST IRON FRAME AND COVER



TYPE 'A' STORM DRAIN MANHOLE

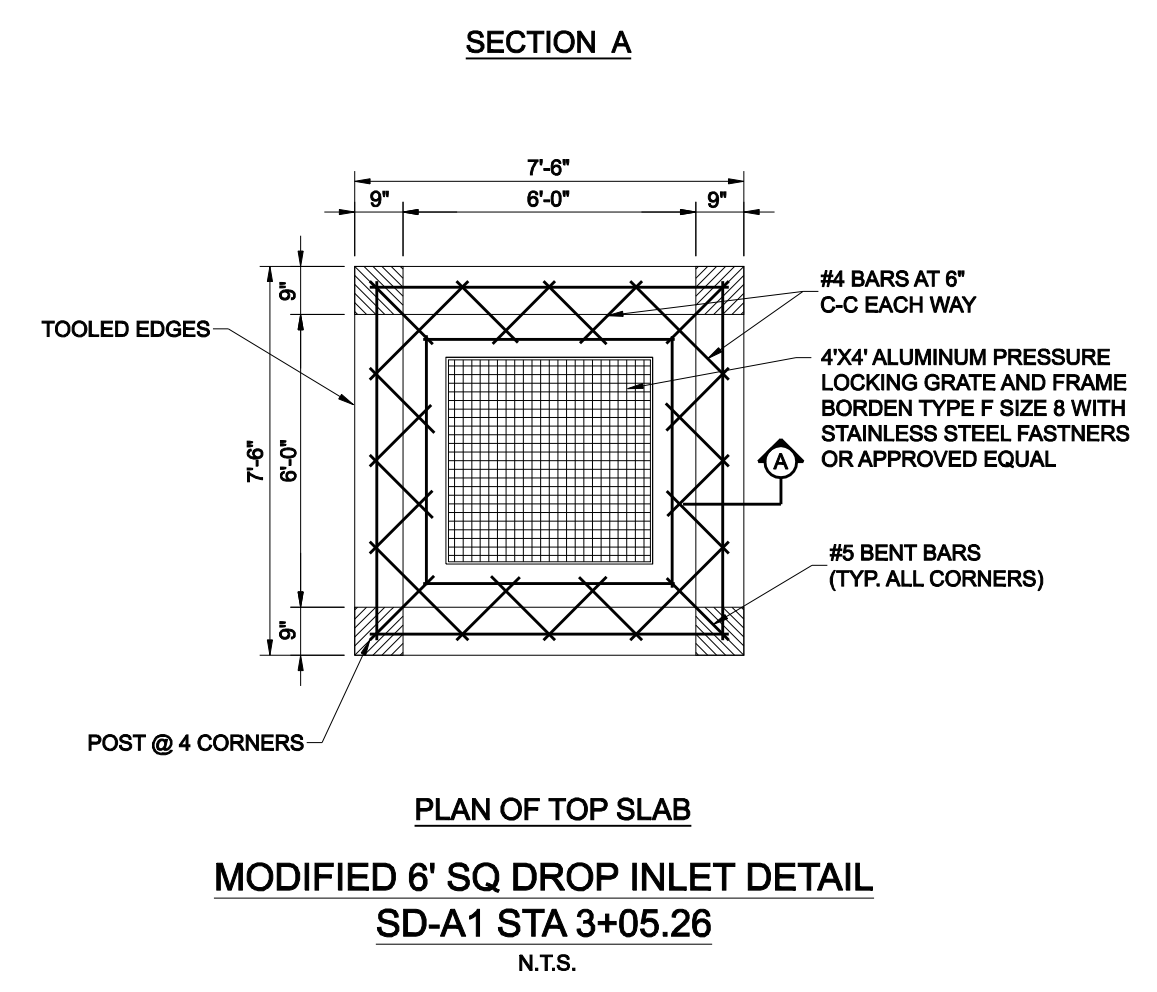
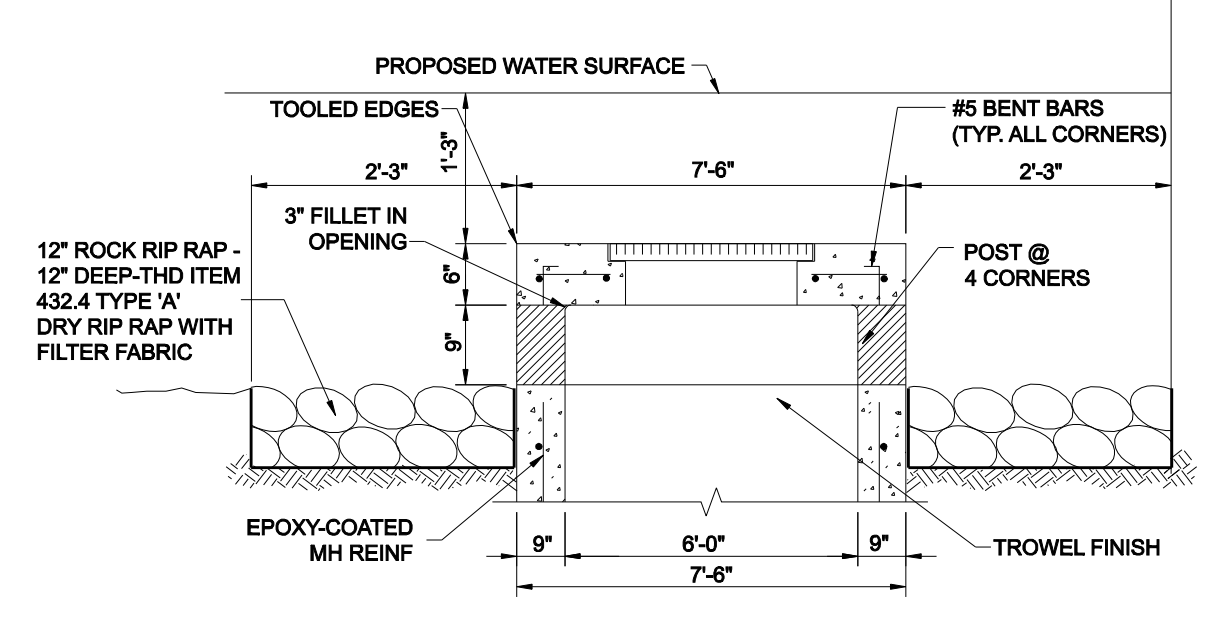


TYPE 'B' STORM DRAIN MANHOLE

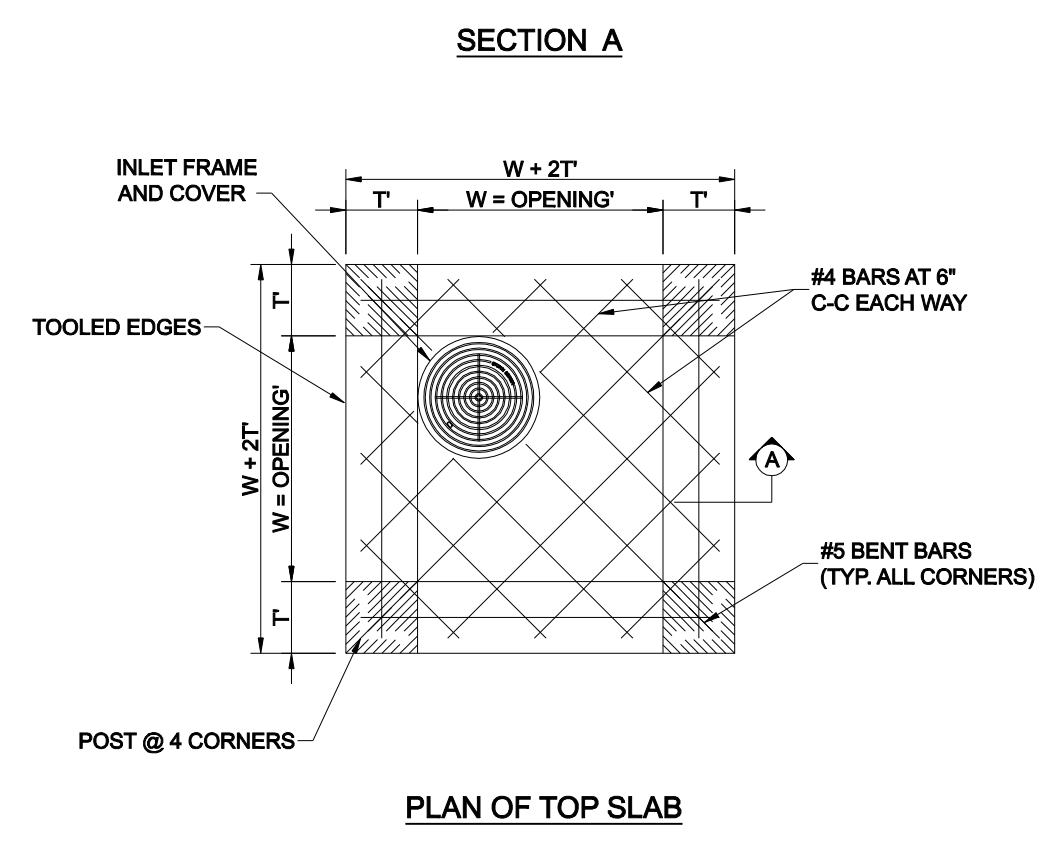
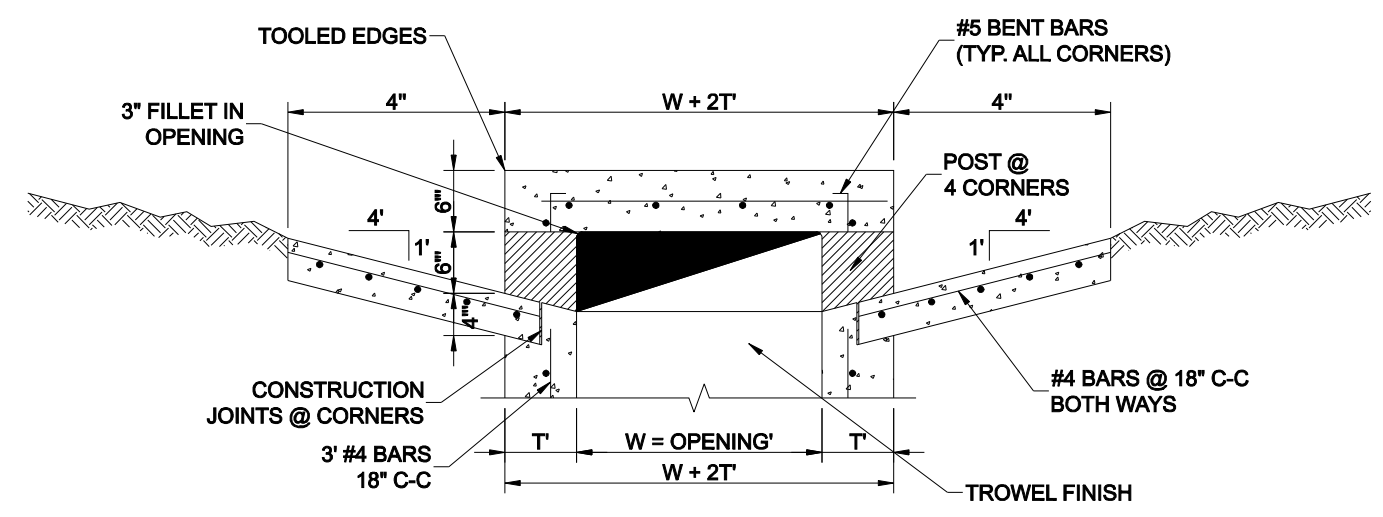


- GENERAL NOTES:**
1. THE SUBSURFACE DRAINAGE SYSTEM SHALL BE CONSTRUCTED WITH A MINIMUM SIZE OF SIX (6) INCH DIAMETER TYPE PS-48 PVC PIPE OR APPROVED EQUAL. THE PIPE SHALL MEET ALL CURRENT ASTM F768 REQUIREMENTS, AND SHALL HAVE GASKET TYPE JOINTS. THE PERFORATED AND CONDUCTING PIPES SHALL BE WHITE IN COLOR.
 2. THE FINAL BACKFILL SHALL CONSIST OF AND BE PLACED IN ACCORDANCE WITH THE N.C.T.C.O.G. SPECIFICATIONS ITEM 6.2.9.
 3. CLEANOUTS SHALL BE INSTALLED EVERY 200' AND AT THE END OF EACH PIPING SYSTEM.

SUBSURFACE DRAIN DETAIL



MODIFIED 6' SQ DROP INLET DETAIL

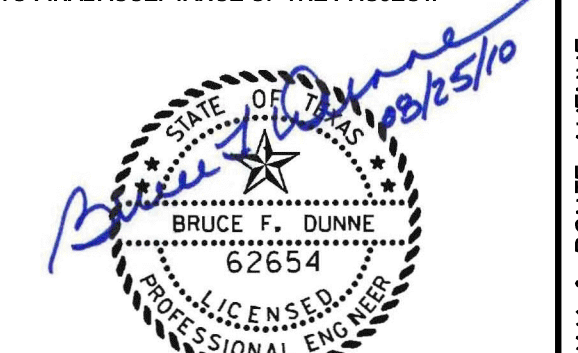


INLET SIZE	T	W
2' SQUARE	7"	2'-0"
4' SQUARE	7"	4'-0"
5' SQUARE	8"	5'-0"
6' SQUARE	9"	6'-0"

DROP INLET DETAIL

GENERAL NOTES

1. ALL CONCRETE DRAINAGE STRUCTURES SHALL HAVE A MINIMUM COMPRESSED STRENGTH OF 3000 P.S.I.
2. ALL CRUSHED STONE SHALL BE 3/4", PASSING #4 SIEVE.
3. ALL FIELD JOINTS WILL BE APPROVED BY THE CITY ENGINEER IF NECESSARY. FIELD JOINTS SHALL BE WIRED ON THE INSIDE AND OUTSIDE TO PROVIDE FOR SMOOTH FLOW OF WATER.
4. RAMNECK COMPOUND OR APPROVED EQUAL SHALL BE USED FOR JOINT SEALS.
5. ALL STORM SEWER PIPE SHALL BE CAMERA INSPECTED AFTER THE INSTALLATION OF ALL PAVING, UTILITIES, AND PRIOR TO FINAL ACCEPTANCE OF THE PROJECT.



NO.	REVISION	BY	DATE

Addison! TOWN OF ADDISON
DALLAS COUNTY, TEXAS
PAVING, DRAINAGE & UTILITY IMPROVEMENTS
VITRUVIAN WAY & PONTE AVENUE

STORM DRAIN DETAILS

icon Consulting Engineers, Inc.		250 W. Southlake Blvd., Suite 117			
Civil Engineers - Designers - Planners		Southlake, Tx 76092 (817) 552-6210			
PROJECT	DESIGN	DRAWN	DATE	FILE	SHEET
5029-01	ICE	ICE	MAY 7 2009	PW# 2009-01	43