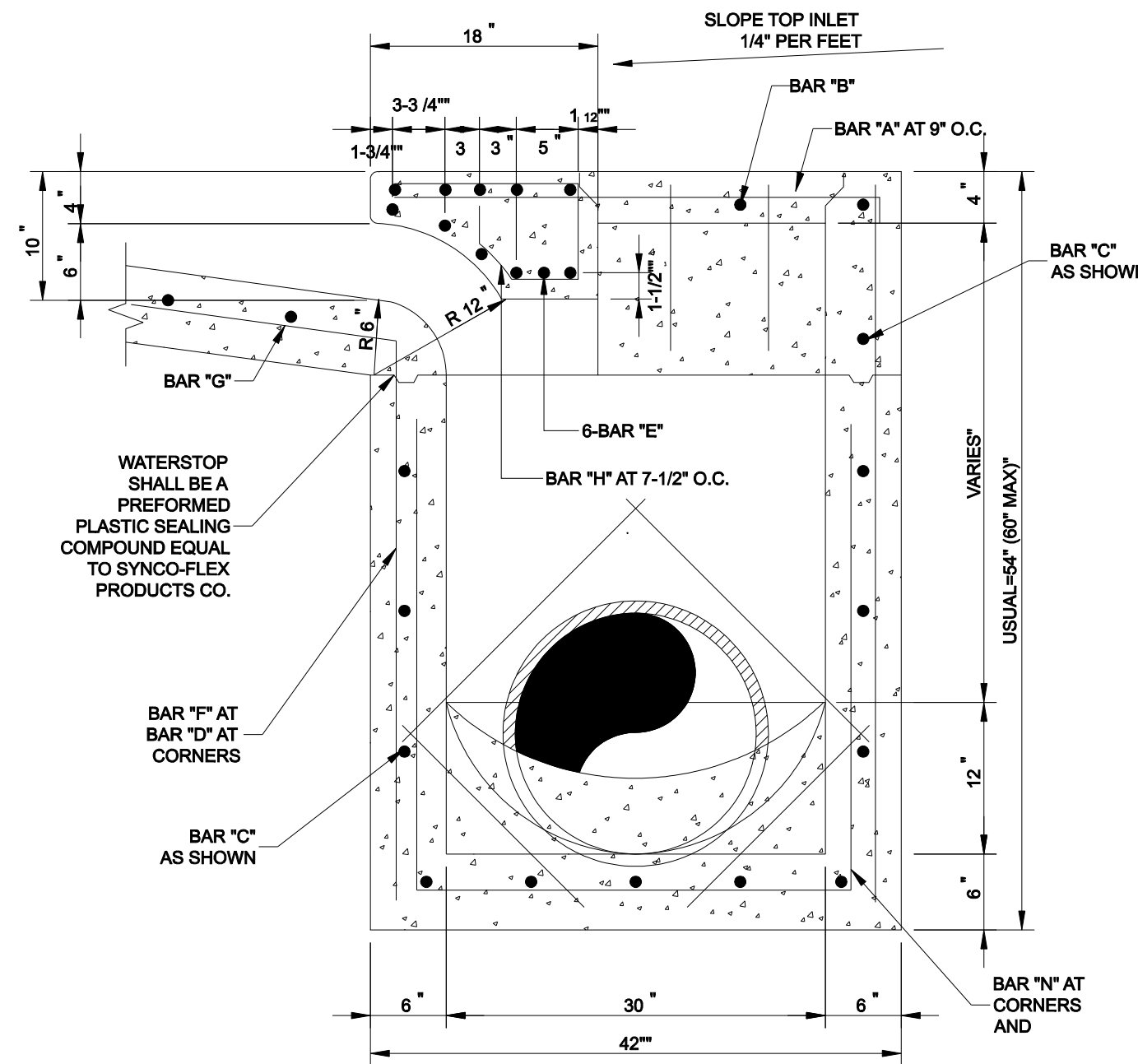
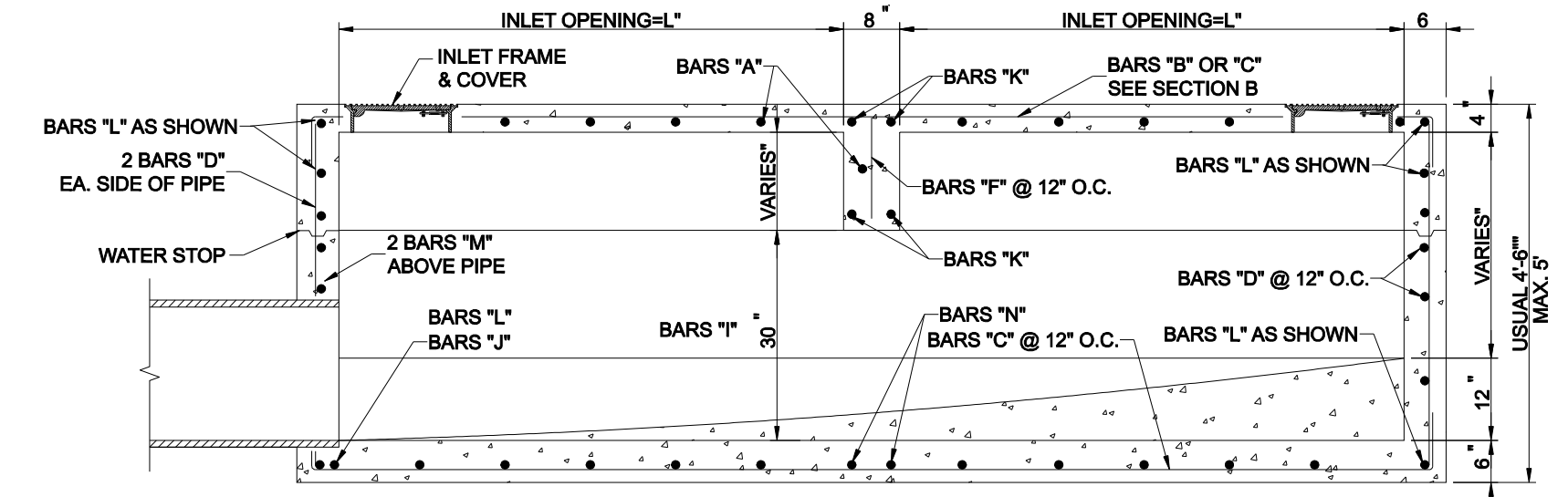
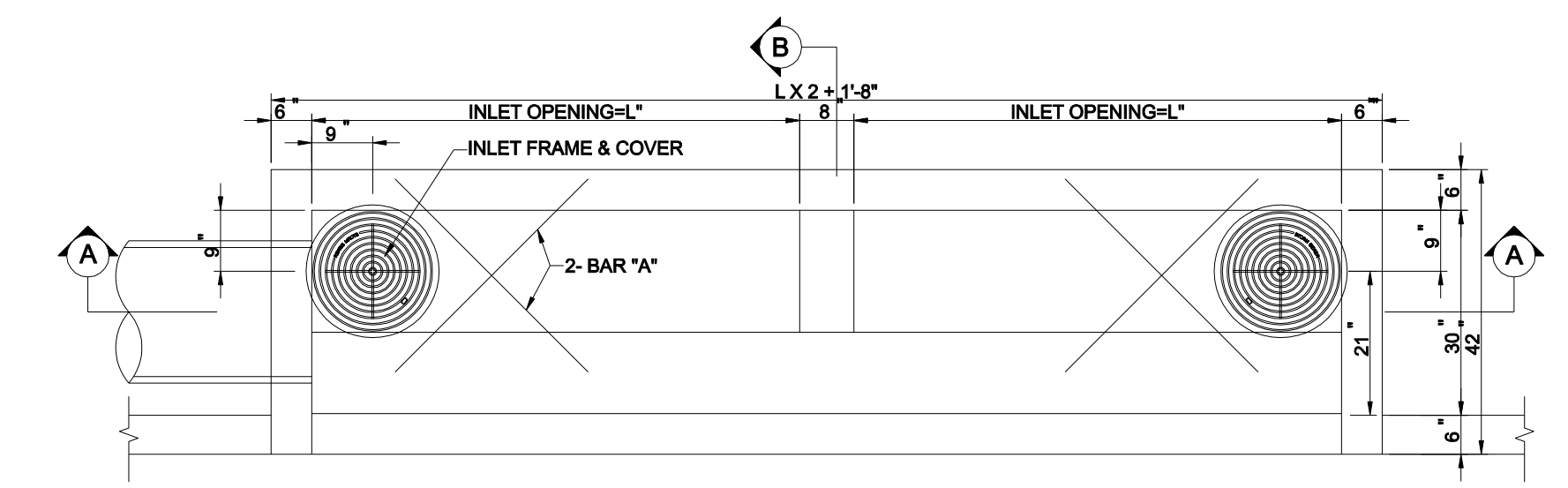


NOTE: REINFORCEMENT SHOWN IS ADDITIONAL FOR SPECIAL CONDITION. FOR REMAINDER OF REINFORCEMENT SEE SECTIONS.

STANDARD RECESSED CURB INLET
12, 14, 16 & 20 FOOT
N.T.S.



STANDARD CURB INLET
12, 14, 16 & 20 FOOT
N.T.S.

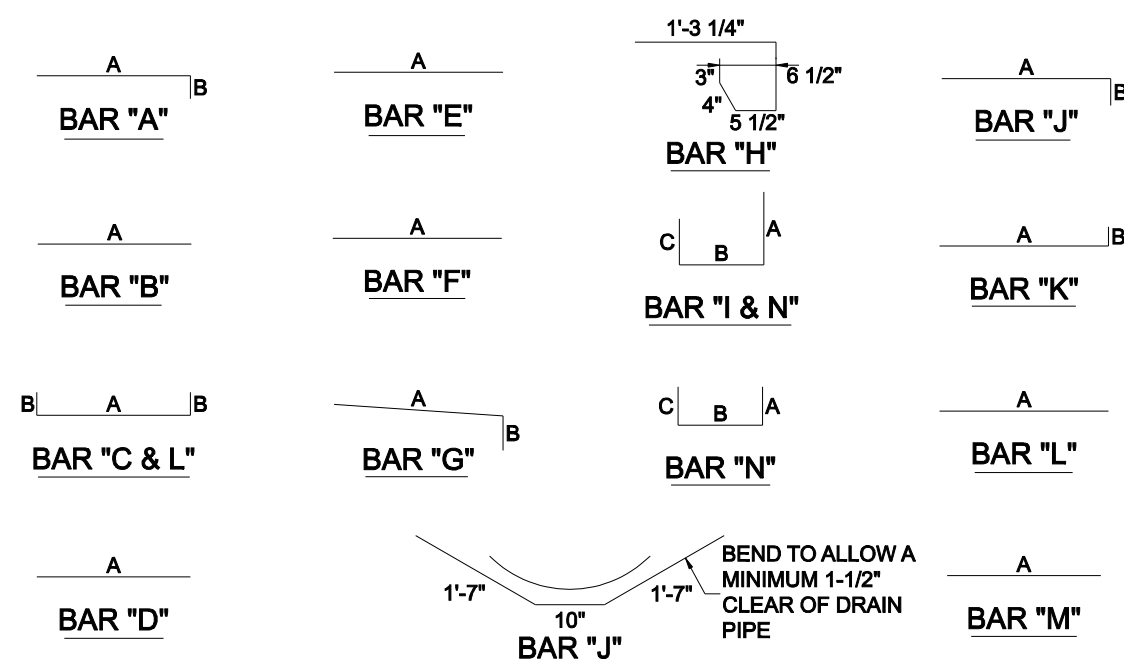


NOTE: REINFORCEMENT SHOWN IS ADDITIONAL FOR SPECIAL CONDITION. FOR REMAINDER OF REINFORCEMENT SEE SECTIONS.

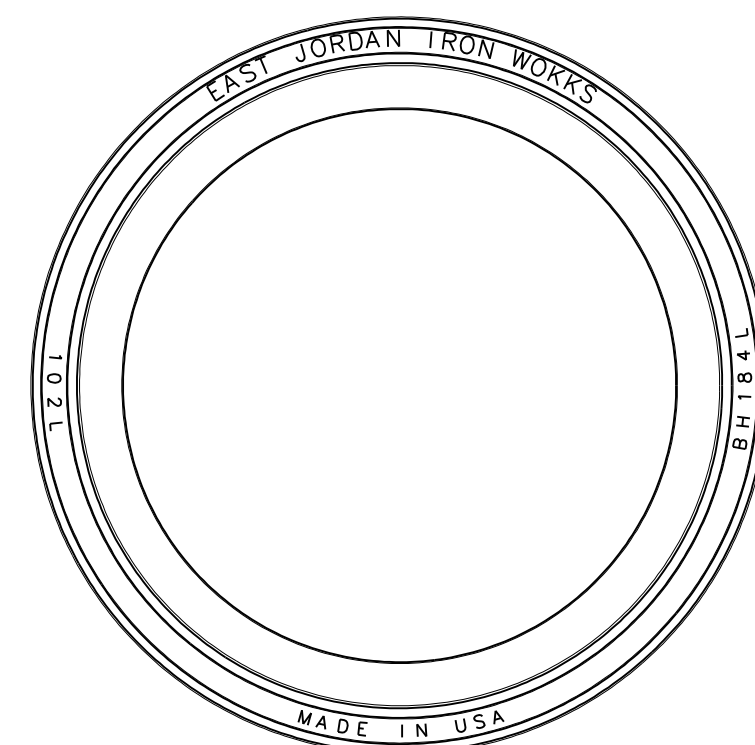
STANDARD CURB INLET
12, 14, 16 & 20 FOOT
N.T.S.

REINFORCING STEEL SCHEDULE													
DIMENSIONS ARE FOR MAXIMUM SIZE INLETS													
INLET LENGTH	BAR TYPE	BAR (1/8")	NO. REQD.	BAR DIMENSIONS			INLET LENGTH	BAR TYPE	BAR (1/8")	NO. REQD.	BAR DIMENSIONS		
				A	B	C					A	B	C
6'	A	3	15	3'-2"	0'-6"	-	6'	A	3	19	3'-2"	0'-6"	-
	B	3	2	11'-6"	-	-		B	3	2	15'-6"	-	-
	C	4	16	13'-4"	0'-6"	-		C	4	16	17'-4"	0'-6"	-
	D	4	9	4'-8"	-	-		D	4	9	4'-8"	-	-
	E	5	6	13'-4"	-	-		E	5	6	17'-4"	-	-
	F	4	5	1'-2"	-	-		F	4	5	1'-2"	-	-
	G	3	12	2'-0"	1'-3"	-		G	3	12	2'-0"	1'-3"	-
	H	3	26	-	-	-		H	3	26	-	-	-
	I	4	12	4'-8"	3'-2"	3'-2"		I	4	16	4'-8"	3'-2"	3'-2"
	J	5	1	-	-	-		J	5	1	-	-	-
	K	5	6	3'-2"	0'-6"	-		K	5	6	3'-2"	0'-6"	-
7'	L	4	11	3'-2"	0'-6"	-	L	4	11	3'-2"	0'-6"	-	
	M	4	2	3'-0"	-	-	M	4	2	3'-0"	-	-	
	N	4	2	4'-8"	3'-2"	4'-8"	N	4	2	4'-8"	3'-2"	4'-8"	
	A	3	17	3'-2"	0'-6"	-	A	3	23	3'-2"	0'-6"	-	
	B	3	2	13'-6"	-	-	B	3	2	19'-6"	-	-	
	C	4	16	15'-4"	0'-6"	-	C	4	16	21'-4"	0'-6"	-	
	D	4	9	4'-8"	-	-	D	4	9	4'-8"	-	-	
	E	5	6	15'-4"	-	-	E	5	6	21'-4"	-	-	
	F	4	5	1'-2"	-	-	F	4	5	1'-2"	-	-	
	G	3	15	2'-0"	1'-3"	-	G	3	15	2'-0"	1'-3"	-	
	H	3	32	-	-	-	H	3	32	-	-	-	
10'	I	4	14	4'-8"	3'-2"	3'-2"	I	4	20	4'-8"	3'-2"	3'-2"	
	J	5	1	-	-	-	J	5	1	-	-	-	
	K	5	6	3'-2"	0'-6"	-	K	5	6	3'-2"	0'-6"	-	
	L	4	11	3'-2"	0'-6"	-	L	4	11	3'-2"	0'-6"	-	
	M	4	2	3'-0"	-	-	M	4	2	3'-0"	-	-	
	N	4	2	4'-8"	3'-2"	4'-8"	N	4	2	4'-8"	3'-2"	4'-8"	

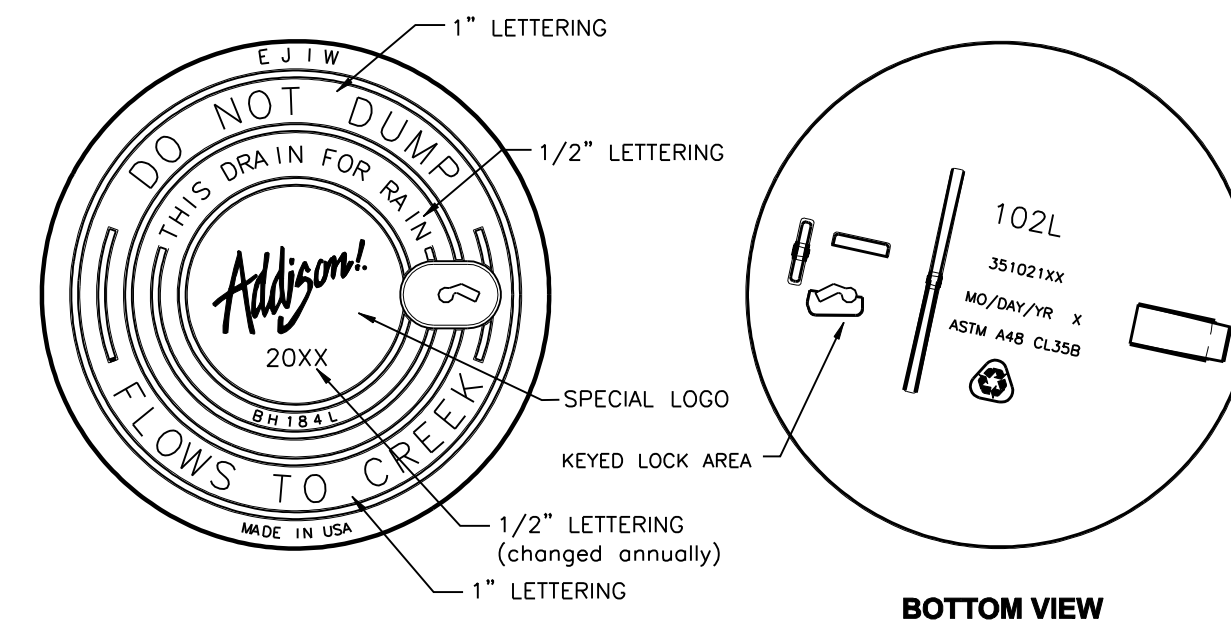
**SEE DIAGRAM FOR DIMENSION FIELD CUT AS REQUIRED TO ACCOMMODATE DRAIN PIPE



BAR DIAGRAMS



RING SECTION



COVER SECTION

LOAD RATING LIGHT DUTY INLET COVER NON-TRAFFIC INLET RING	COATING DIPPED	ESTIMATED WEIGHT COVER: 60 LBS FRAME: 151 LBS	MATERIAL SPECIFICATION COVER - GRAY IRON ASTM A48 CL35B FRAME - GRAY IRON ASTM A48 CL35B
---	-------------------	---	--

DESIGNATES MACHINE SURFACE

INLET FRAME AND COVER

GENERAL NOTES

- ALL CONCRETE DRAINAGE STRUCTURES SHALL HAVE A MINIMUM COMPRESSED STRENGTH OF 3800 P.S.I.
- ALL CRUSHED STONE SHALL BE 3/4", PASSING #4 SIEVE.
- ALL FIELD JOINTS WILL BE APPROVED BY THE CITY ENGINEER IF NECESSARY. FIELD JOINTS SHALL BE WIPED ON THE INSIDE AND OUTSIDE TO PROVIDE FOR SMOOTH FLOW OF WATER.
- RAMNECK COMPOUND OR APPROVED EQUAL SHALL BE USED FOR JOINT SEALS.
- ALL STORM SEWER PIPE SHALL BE CAMERA INSPECTED AFTER THE INSTALLATION OF ALL PAVING, UTILITIES, AND PRIOR TO FINAL ACCEPTANCE OF THE PROJECT.



NO.	REVISION	BY	DATE

Addison! TOWN OF ADDISON
DALLAS COUNTY, TEXAS
PAVING, DRAINAGE & UTILITY IMPROVEMENTS
VITRUVIAN WAY & PONTE AVENUE

STORM DRAIN DETAILS

icon Consulting Engineers, Inc.		250 W. Southlake Blvd., Suite 117 Southlake, Tx 76092 (817) 552-6210	
PROJECT	DESIGN	DRAWN	DATE
5029-01	ICE	ICE	MAY 7 2009
FILE	SHEET		
PW# 2009-01	45		

PAVING, DRAINAGE, & UTILITY IMPROVEMENTS - VITRUVIAN WAY & PONTE AVENUE