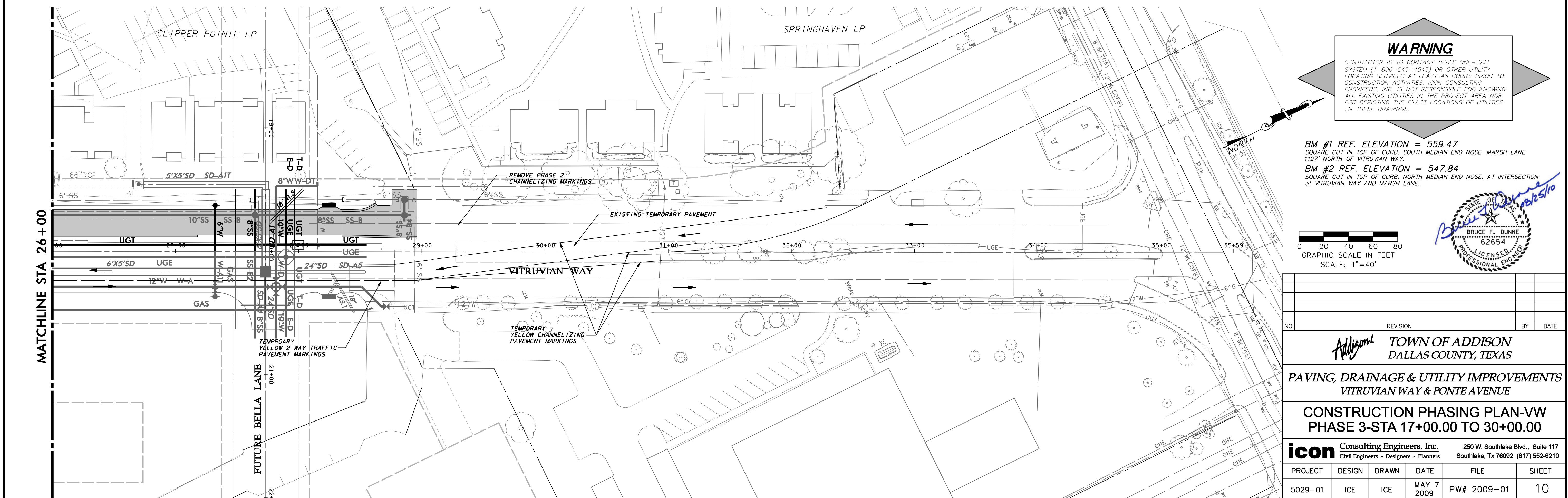


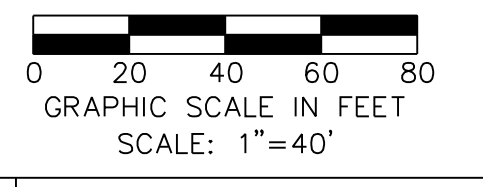
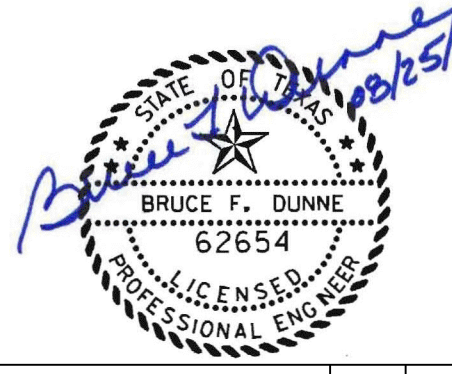
PROPOSED PERMANENT PAVEMENT  
THIS PHASE

PHASE 1 - NORTH



**WARNING**  
CONTRACTOR IS TO CONTACT TEXAS ONE-CALL SYSTEM (1-800-245-4545) OR OTHER UTILITY LOCATING SERVICES AT LEAST 48 HOURS PRIOR TO CONSTRUCTION ACTIVITIES. ICON CONSULTING ENGINEERS, INC. IS NOT RESPONSIBLE FOR KNOWING ALL EXISTING UTILITIES IN THE PROJECT AREA NOR FOR DEPICTING THE EXACT LOCATIONS OF UTILITIES ON THESE DRAWINGS.

BM #1 REF. ELEVATION = 559.47  
SQUARE CUT IN TOP OF CURB, SOUTH MEDIAN END NOSE, MARSH LANE  
1127' NORTH OF VITRUVIAN WAY.  
BM #2 REF. ELEVATION = 547.84  
SQUARE CUT IN TOP OF CURB, NORTH MEDIAN END NOSE, AT INTERSECTION  
OF VITRUVIAN WAY AND MARSH LANE.



NO.	REVISION	BY	DATE

**Addison!** TOWN OF ADDISON  
DALLAS COUNTY, TEXAS

PAVING, DRAINAGE & UTILITY IMPROVEMENTS  
VITRUVIAN WAY & PONTE AVENUE

CONSTRUCTION PHASING PLAN-VW  
PHASE 3-STA 17+00.00 TO 30+00.00

**icon** Consulting Engineers, Inc. 250 W. Southlake Blvd., Suite 117  
Civil Engineers - Designers - Planners Southlake, Tx 76092 (817) 552-6210

PROJECT	DESIGN	DRAWN	DATE	FILE	SHEET
5029-01	ICE	ICE	MAY 7 2009	PW# 2009-01	10

PAVING, DRAINAGE, & UTILITY IMPROVEMENTS - VITRUVIAN WAY & PONTE AVENUE