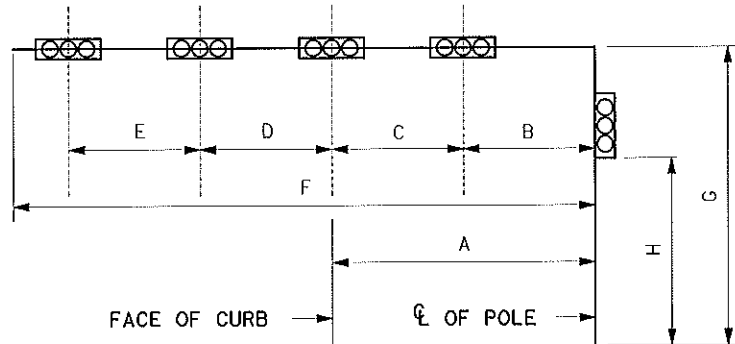


SIGNAL HEAD AND POLE PLACEMENT (FEET)										
POLE NUMBER	A	B	C	D	E	F	G	H	NO. OF HEADS	LUM-A
P-1	10	20.5	11	12.5	---	44	20	---	3	---
P-2	7.5	20	12	---	---	32	20	14	3	---
P-3	12.5	22	11	11	---	44	20	---	3	---
P-4	13	12	12	12	---	36	20	---	3	---



ELECTRICAL SERVICE DATA												
ELECTRIC SERVICE	SHEET NO.	ELECTRICAL SERVICE DESCRIPTION (SEE ED(4)&(5)-03)	SERVICE CONDUIT SIZE (RMC)	SERVICE CONDUCTORS NO./SIZE	SAFETY SWITCH AMPS	MAIN CIRCUIT BREAKER POLE/AMP	TWO-POLE CONTACTOR AMPS	PANELBD. / LOADCENTER AMP RATING	CIRCUIT NO.	BRANCH CIRCUIT BREAKER POLE/AMPS	BRANCH CIRCUIT AMPS	KVA LOAD
SIGNAL		ELECTRICAL SERVICE SHOWN ON STREET LIGHTING & CONDUIT PLAN										

POLE NUMBER	DRILL SHAFTS		WIRE INSIDE POLE (FEET)				
	TYPE 30-A	TYPE 36-A	5 CNDR CABLE (#14 AWG) (SIGNAL)	7 CNDR CABLE (#14 AWG) (SIGNAL)	VIVDS CABLE	OPTICOM CABLE	5 CNDR CABLE (#14 AWG) (ILSN)
P-1	---	13	112	64	60	46	25
P-2	11	---	74	52	52	43	25
P-3	---	13	115	64	61	49	25
P-4	---	13	96	56	56	47	25
TOTALS	11	39	397	236	229	185	100

GROUND BOX SUMMARY	
TYPE	EACH
C W/APRON	5

VIVDS DETECTOR CAMERA			
VIVDS CAMERA	STATUS	LOCATION	DETECTION ZONE
V1	I	P-1 MAST ARM	Ø1 & Ø6 PRESENCE
V2	I	P-2 MAST ARM	Ø3 & Ø8 PRESENCE
V3	I	P-3 MAST ARM	Ø2 & Ø5 PRESENCE
V4	I	P-4 MAST ARM	Ø4 & Ø7 PRESENCE

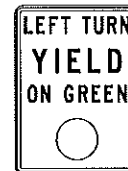
I = INSTALL NEW CAMERA

SIGN SUMMARY									
ID	TYPE	LEGEND	EXIST	REM	REL	REP	INST	HARDWARE & SUPPORT	LOCATION
(A)	R10-12	LEFT TURN YIELD ON GREEN (BALL)					1	1	P-1 ARM
(B)	R3-4	NO U-TURN					1	1	P-1 ARM
(C)	ST. NAME	PONTE AVE					1	1	P-1 ARM
(D)	R10-12	LEFT TURN YIELD ON GREEN (BALL)					1	1	P-2 ARM
(E)	ST NAME	VITRUVIAN WAY					1	1	P-2 ARM
(F)	R10-12	LEFT TURN YIELD ON GREEN (BALL)					1	1	P-3 ARM
(G)	R3-4	NO U-TURN					1	1	P-3 ARM
(H)	ST NAME	PONTE AVE					1	1	P-3 ARM
(I)	R10-12	LEFT TURN YIELD ON GREEN (BALL)					1	1	P-4 ARM
(J)	ST NAME	VITRUVIAN WAY					1	1	P-4 ARM

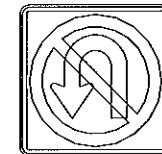
EXIST = EXISTING ; REM = REMOVE ; REL = RELOCATE ; REP = REPLACE ; INST = INSTALL
 ALL NEW SIGNS MOUNTED ON SIGNAL POLES AND MAST ARMS SHALL BE CONSIDERED SUBSIDIARY TO TXDOT ITEM 680 "INSTALLATION OF HIGHWAY TRAFFIC SIGNALS."

ALL MAST ARM MOUNTED SIGNS SHALL HAVE HIGH INTENSITY PRISMATIC (HIP) SHEETING.

ALL STREET NAME SIGNS SHALL BE ILLUMINATED STREET NAME SIGNS MEETING TOWN OF ADDISON REQUIREMENTS. CONTRACTOR SHALL OBTAIN BLOCK NUMBERS FROM THE TOWN OF ADDISON AND RECEIVE APPROVAL OF THE DESIGN OF THE SIGNS PRIOR TO FABRICATION.

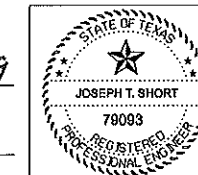


TMUTCD SIGN R10-12
24" X 30"



TMUTCD SIGN R3-4
24" X 24"

JOSEPH T. SHORT, P.E.
LEE ENGINEERING, L.L.C., REGISTRATION NO. F-450



NO.	REVISION	BY	DATE

TOWN OF ADDISON
 DALLAS COUNTY, TEXAS
 PAVING, DRAINAGE & UTILITY IMPROVEMENTS
 VITRUVIAN WAY AND PONTE AVENUE
SIGNAL DESIGN TABLES
 VITRUVIAN WAY AT PONTE AVENUE

PROJECT	DESIGN	DRAWN	DATE	FILE	SHEET
5029-01	C/P	C/P	APR 28, 2009	PW# 2009-01	TS6

PAVING, DRAINAGE, & UTILITY IMPROVEMENTS - VITRUVIAN WAY & PONTE AVENUE