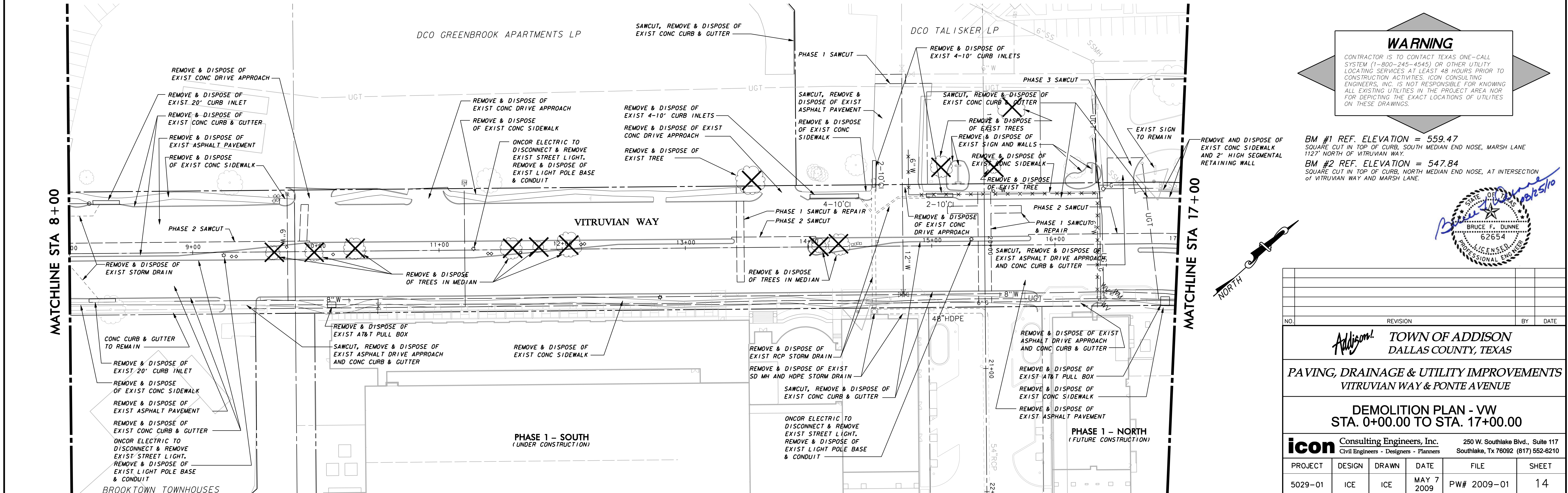


- DEMOLITION NOTES:**
- GENERAL CONSTRUCTION NOTES: REFER TO SHEET C4 "GENERAL CONSTRUCTION NOTES, LEGEND AND ABBREVIATIONS" FOR THE GENERAL CONSTRUCTION NOTES FOR THE PROJECT.
 - INGRESS AND EGRESS: THE CONTRACTOR SHALL MAINTAIN INGRESS AND EGRESS TO THE SITE AND ADJACENT PROPERTIES AT ALL TIMES AND CONDUCT HIS OPERATIONS WITH MINIMUM INTERFERENCE TO PUBLIC OR PRIVATE ACCESSES.
 - PROTECTION OF EXISTING FACILITIES: CONTRACTOR SHALL PROVIDE, ERECT, AND MAINTAIN TEMPORARY BARRIERS, FENCING, BRACING AND SHORING, AND SECURITY DEVICES TO PROTECT EXISTING STRUCTURES, UTILITIES, APPURTENANCES, TREES AND LANDSCAPING, AND TO PREVENT MOVEMENT OR SETTLEMENT OF EXISTING STRUCTURES WHICH ARE NOT TO BE DEMOLISHED AND/OR REMOVED.
 - STORAGE OF MATERIALS FOR RE-USE: CONTRACTOR SHALL REMOVE AND STORE ON SITE (WHERE DESIGNATED BY THE DEVELOPER), ALL MATERIALS (SUCH AS ASPHALT AND CONCRETE PAVEMENT & SUITABLE EARTHEN MATERIAL) TO BE SALVAGED OR RE-INSTALLED LATER IN CONSTRUCTION.
 - FRANCHISE UTILITY COORDINATION: THE CONTRACTOR SHALL NOTIFY AND COORDINATE WITH ALL FRANCHISE UTILITY COMPANIES FOR THE REMOVAL AND/OR RELOCATION OF THE RESPECTIVE UTILITY LINES AND APPURTENANCES USED BY EACH UTILITY. ALL WORK ASSOCIATED WITH FRANCHISE UTILITY REMOVAL RELOCATION AND/OR MODIFICATIONS ARE TO BE PERFORMED ONLY BY THAT UTILITY PROVIDER UNLESS SPECIFICALLY NOTED OTHERWISE.
 - TREE REMOVAL: THE TREES DESIGNATED TO BE REMOVED HAVE A LARGE "X" THROUGH THE TREE SYMBOL. STOCKPILING OF TREES AFTER CUTTING/REMOVAL IS NOT ALLOWED. CONTRACTOR SHALL DISPOSE OF TREE CARCASSES IMMEDIATELY AFTER THEY ARE TAKEN DOWN.
 - SAWCUTTING OF EXISTING PAVEMENT: SAWCUTTING, WHERE INDICATED ON THE DRAWINGS FOR REMOVAL OF EXISTING PAVEMENT, SHALL BE A FULL DEPTH CUT THAT IS NEAT AND TRUE IN ALIGNMENT.
 - BACKFILLING: THE CONTRACTOR SHALL BACKFILL ALL EXCAVATED AREAS CAUSED AS A RESULT OF DEMOLITION, AND PROVIDE POSITIVE DRAINAGE TO PREVENT PONDING OF WATER.
 - REMOVAL OF MATERIALS FROM SITE: ALL MATERIALS TO BE REMOVED FROM THE SITE INCLUDING BUT NOT LIMITED TO UNSUITABLE EARTHEN MATERIAL; UTILITY PIPING; FENCING; ROCK; TRASH, REFUSE AND OTHER DEBRIS SHALL BECOME THE PROPERTY OF THE CONTRACTOR AND SHALL BE LEGALLY DISPOSED OF OUTSIDE THE LIMITS OF THE PROJECT AT THE CONTRACTOR'S EXPENSE. THE CONTRACTOR SHALL WITH ALL APPLICABLE LAWS GOVERNING SPILLAGE OF DEBRIS WHILE TRANSPORTING TO A DISPOSAL SITE.
 - REPLACEMENT OF DAMAGED FACILITIES: ALL STRUCTURES, UTILITIES, PAVEMENT, SIDEWALKS, WALLS, FENCES, ETC. NOT DESIGNATED TO BE REMOVED BUT THAT ARE DAMAGED DURING CONSTRUCTION ACTIVITIES SHALL BE REPLACED TO A CONDITION AS GOOD AS OR BETTER THAN THE CONDITIONS PRIOR TO STARTING THE WORK, SOLELY AT THE EXPENSE OF THE CONTRACTOR.
 - ACCESS TO PROPERTIES: STREET AND SIDEWALK ACCESS TO ABUTTING PROPERTIES DURING THE CONSTRUCTION OF THIS PROJECT MUST BE MAINTAINED FOR EMERGING OF LOCAL TRAFFIC.



WARNING
 CONTRACTOR IS TO CONTACT TEXAS ONE-CALL SYSTEM (1-800-245-4545) OR OTHER UTILITY LOCATING SERVICES AT LEAST 48 HOURS PRIOR TO CONSTRUCTION ACTIVITIES. ICON CONSULTING ENGINEERS, INC. IS NOT RESPONSIBLE FOR KNOWING ALL EXISTING UTILITIES IN THE PROJECT AREA NOR FOR DEPICTING THE EXACT LOCATIONS OF UTILITIES ON THESE DRAWINGS.

BM #1 REF. ELEVATION = 559.47
 SQUARE CUT IN TOP OF CURB, SOUTH MEDIAN END NOSE, MARSH LANE 1127' NORTH OF VITRUVIAN WAY.
 BM #2 REF. ELEVATION = 547.84
 SQUARE CUT IN TOP OF CURB, NORTH MEDIAN END NOSE, AT INTERSECTION OF VITRUVIAN WAY AND MARSH LANE.



NO.	REVISION	BY	DATE

Addison! TOWN OF ADDISON
 DALLAS COUNTY, TEXAS

PAVING, DRAINAGE & UTILITY IMPROVEMENTS
 VITRUVIAN WAY & PONTE AVENUE

DEMOLITION PLAN - VW
 STA. 0+00.00 TO STA. 17+00.00

icon Consulting Engineers, Inc. 250 W. Southlake Blvd., Suite 117
 Civil Engineers - Designers - Planners Southlake, Tx 76092 (817) 552-6210

PROJECT	DESIGN	DRAWN	DATE	FILE	SHEET
5029-01	ICE	ICE	MAY 7 2009	PW# 2009-01	14