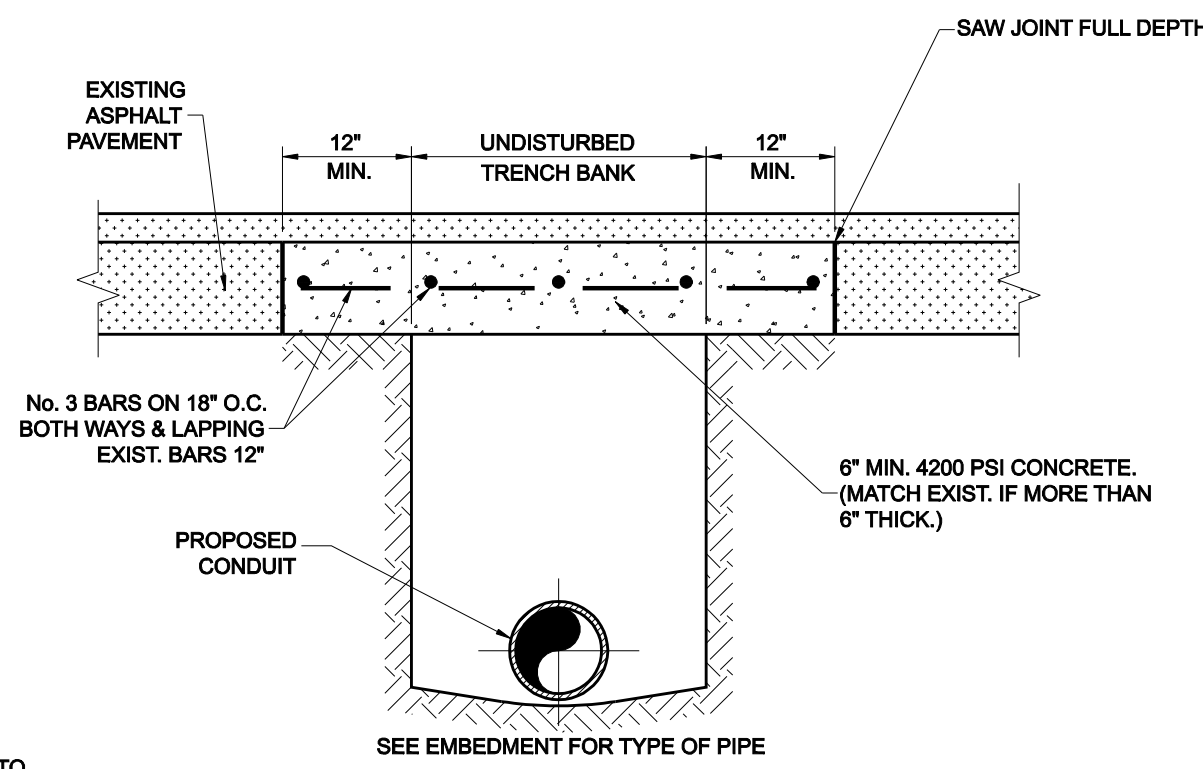
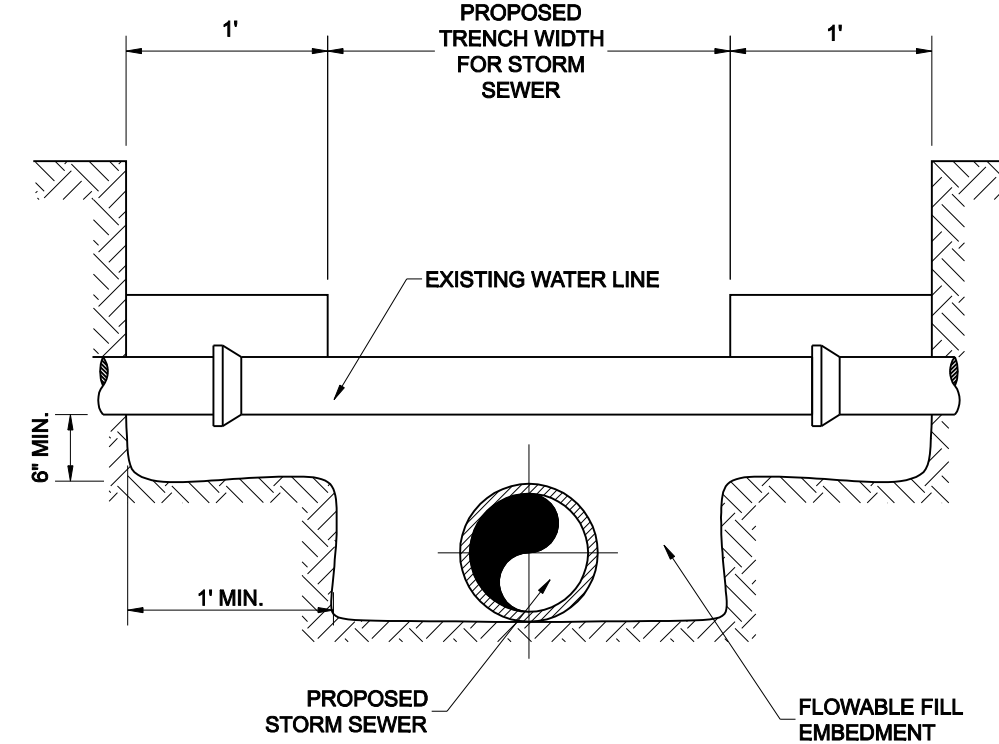


CONCRETE STREET OR DRIVEWAY REPAIR
N.T.S.

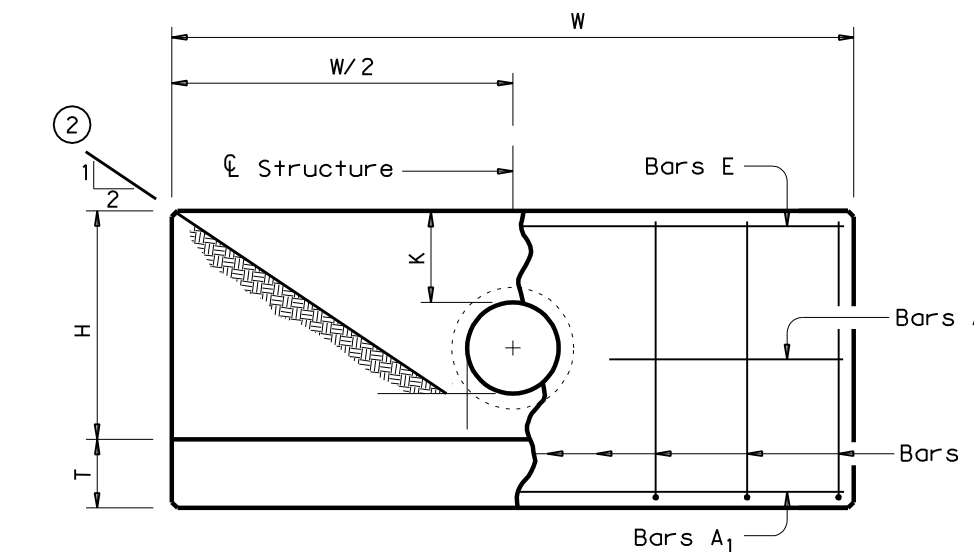


ASPHALT STREET OR DRIVEWAY REPAIR
N.T.S.

NOTE:
ALL JOINTS WILL BE PARALLEL OR PERPENDICULAR TO DIRECTION OF TRAVEL



DETAIL OF UTILITY SUPPORT

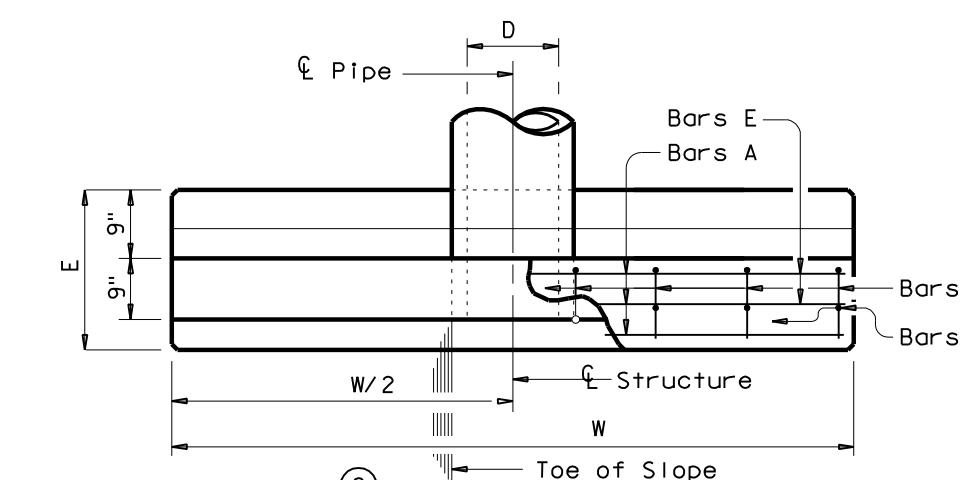


ELEVATION

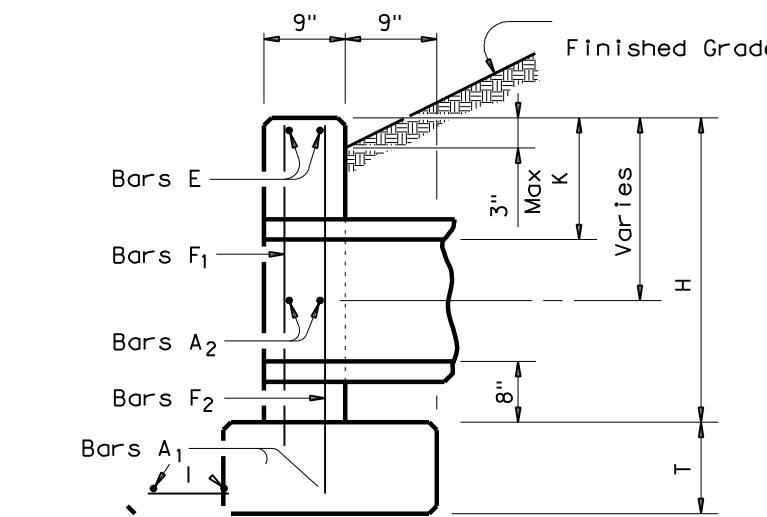
TABLE OF CONSTANT DIMENSIONS					
DIA. OF PIPE, D	W	K	H	T	E
12"	9'-0"	1'-0"	2'-8"	9"	1'-9"
15"	10'-3"	1'-0"	2'-11"	9"	1'-9"
18"	11'-6"	1'-0"	3'-2"	9"	1'-9"
21"	12'-9"	1'-0"	3'-5"	9"	2'-0"
24"	14'-0"	1'-0"	3'-8"	9"	2'-0"
30"	16'-6"	1'-0"	4'-2"	9"	2'-3"
36"	19'-0"	1'-0"	4'-8"	1'-0"	2'-6"
42"	21'-6"	1'-0"	5'-2"	1'-0"	2'-9"

TABLE OF REINFORCING STEEL			
Bar	Size	Spa	No.
A1	# 5	~	2
A2	# 5	1'-6"	~
E	# 5	~	2
F	# 5	1'-0"	~

Quantities shown are for one structure end. (One headwall)



PLAN OF NON-SKEWED PIPE



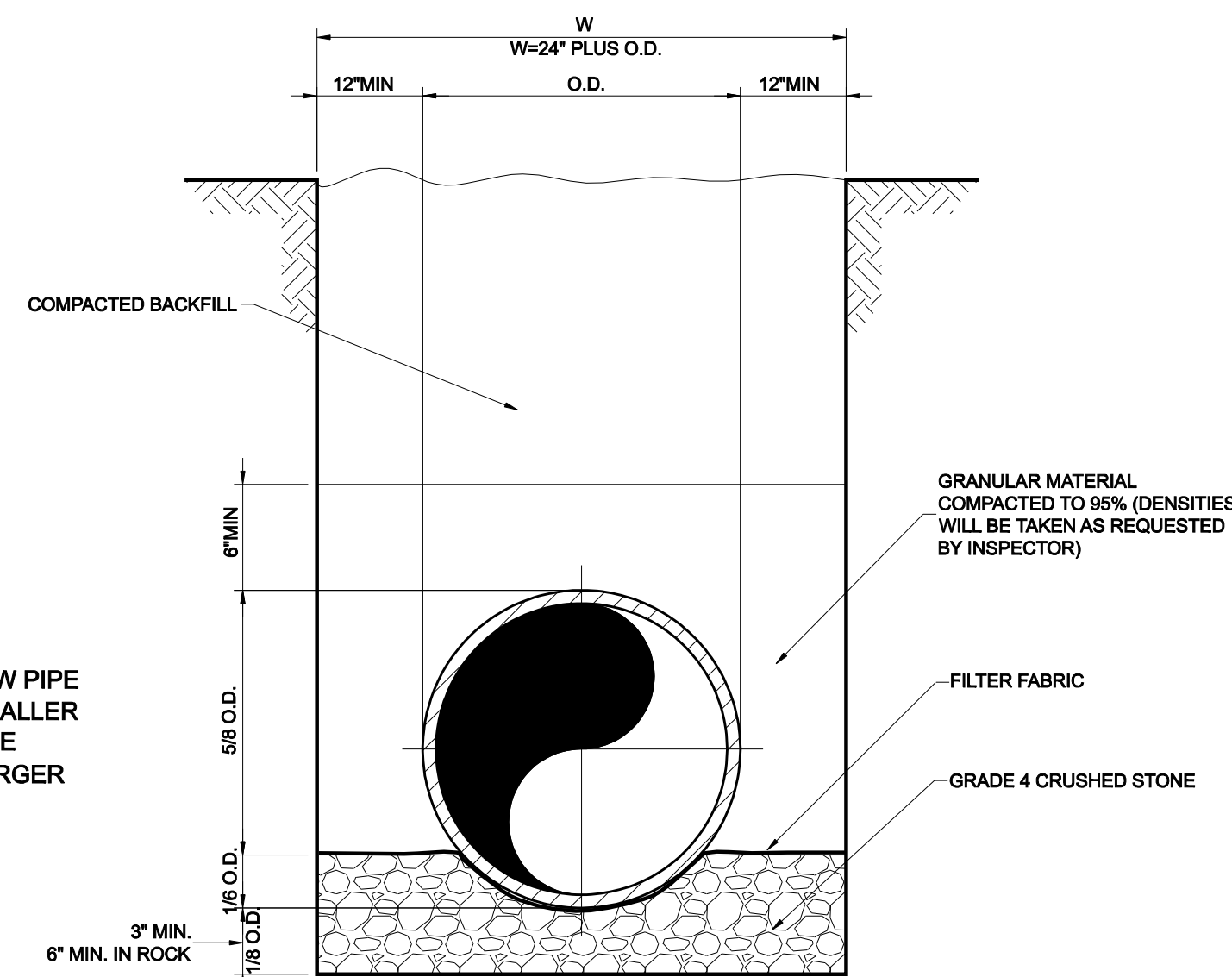
SECTION

GENERAL NOTES:
Designed according to current AASHTO Standard and Interim Specifications.
Reinforcing steel shall be placed with the center of the outside layer of bars 2" from the surface of the concrete.
All concrete shall be Class "C" and shall have a minimum compressive strength of 3600 psi.
No bridge rails of any type may be mounted directly to these culvert headwalls.

CONCRETE HEADWALL WITH PARALLEL WINGS FOR NON-SKEWED PIPE CULVERT
NOT TO SCALE

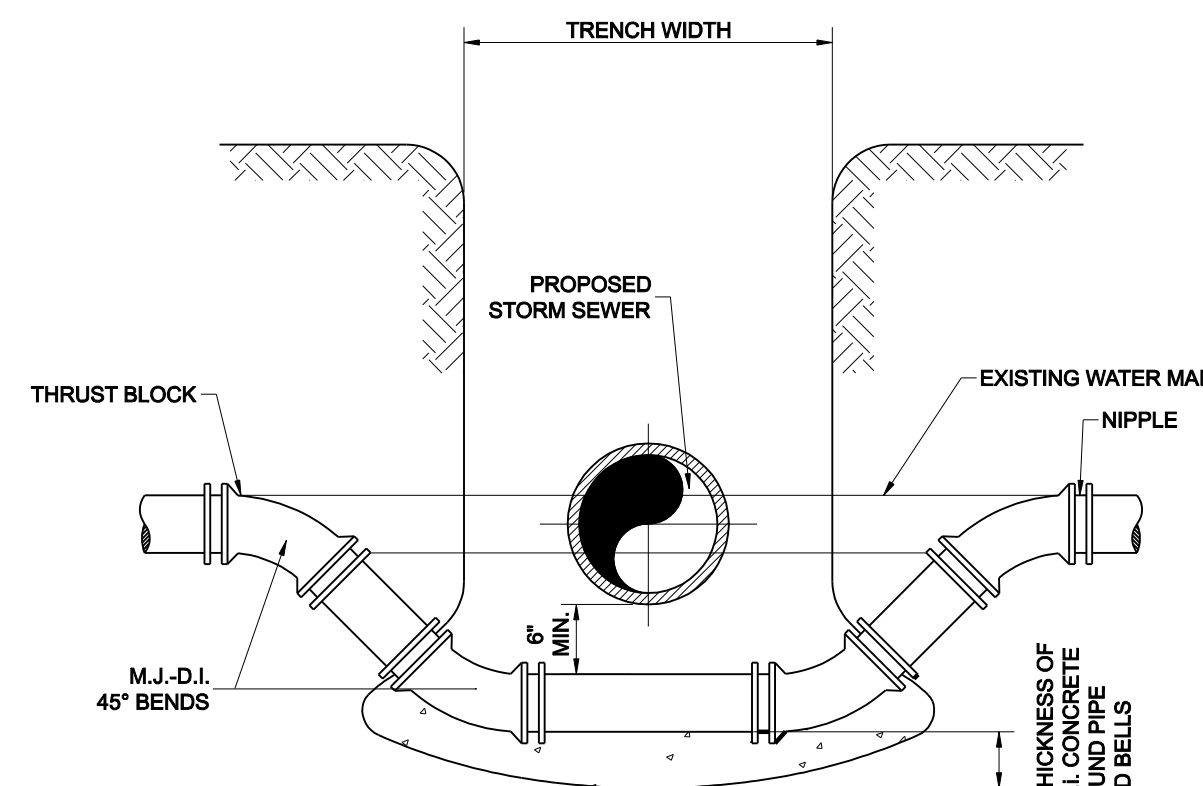
GENERAL NOTES

- ALL CONCRETE DRAINAGE STRUCTURES SHALL HAVE A MINIMUM COMPRESSED STRENGTH OF 3600 P.S.I.
- ALL CRUSHED STONE SHALL BE 3/4", PASSING #4 SIEVE.
- ALL FIELD JOINTS WILL BE APPROVED BY THE CITY ENGINEER IF NECESSARY. FIELD JOINTS SHALL BE WIPED ON THE INSIDE AND OUTSIDE TO PROVIDE FOR SMOOTH FLOW OF WATER.
- RAMNECK COMPOUND OR APPROVED EQUAL SHALL BE USED FOR JOINT SEALS.
- ALL STORM SEWER PIPE SHALL BE CAMERA INSPECTED AFTER THE INSTALLATION OF ALL PAVING, UTILITIES, AND PRIOR TO FINAL ACCEPTANCE OF THE PROJECT.

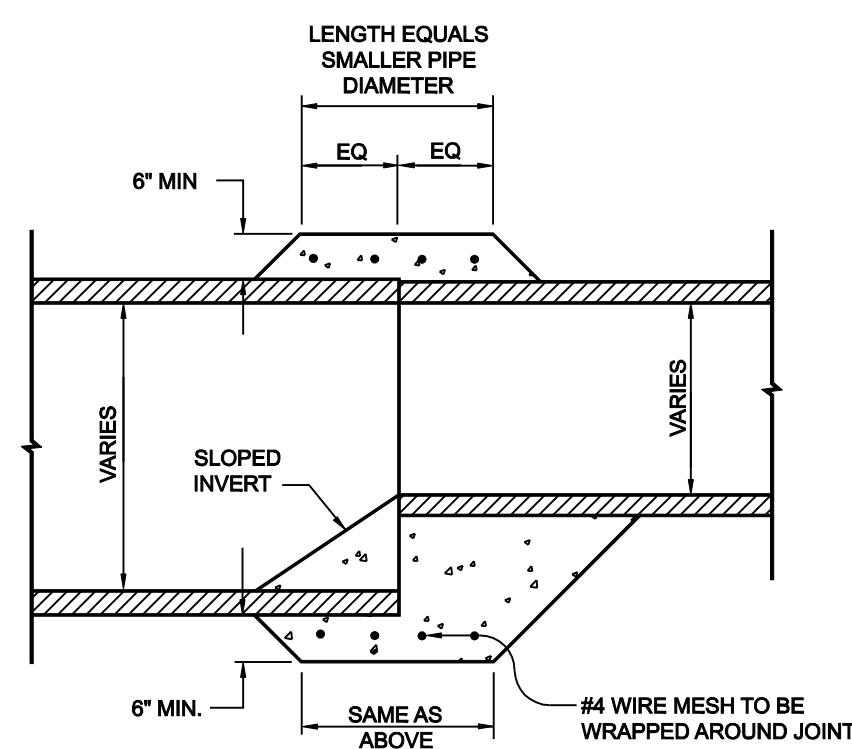


RCP STORM SEWER PIPE BEDDING

NOTE:
DEPTH OF TRENCH BELOW PIPE
3" MIN. FOR 27" PIPE & SMALLER
4" MIN. FOR 30" TO 60" PIPE
6" MIN. FOR 66" PIPE & LARGER

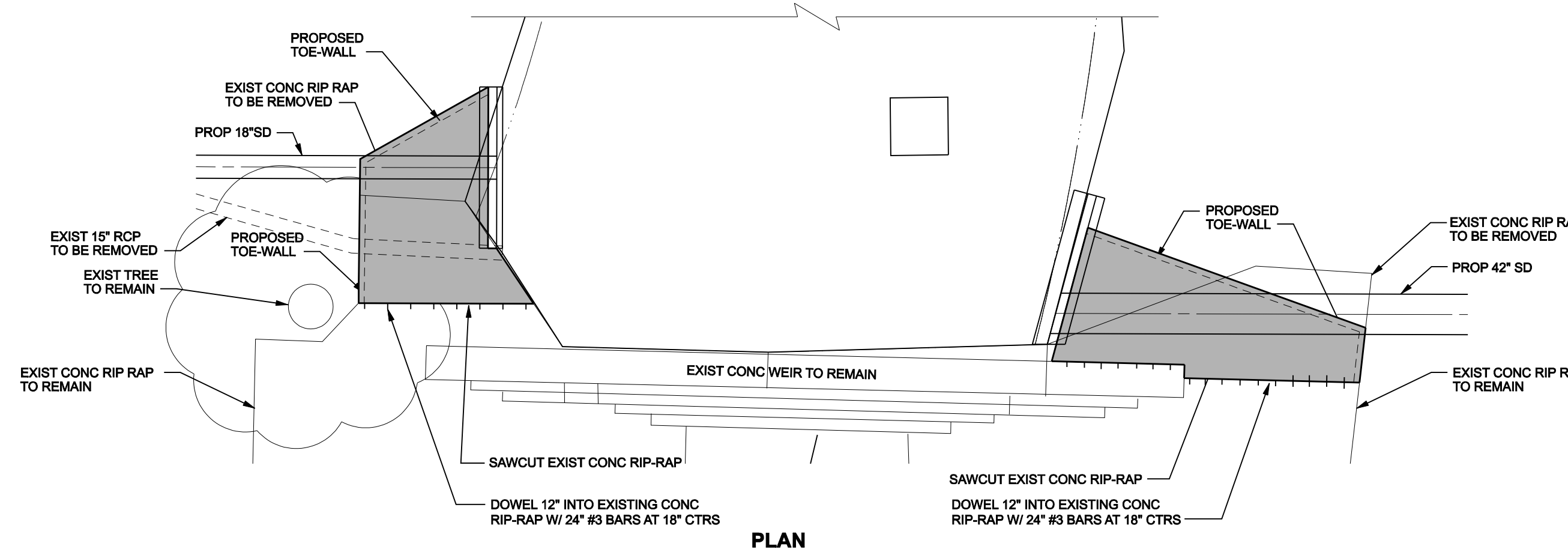


DETAIL FOR WATER MAIN LOWERING

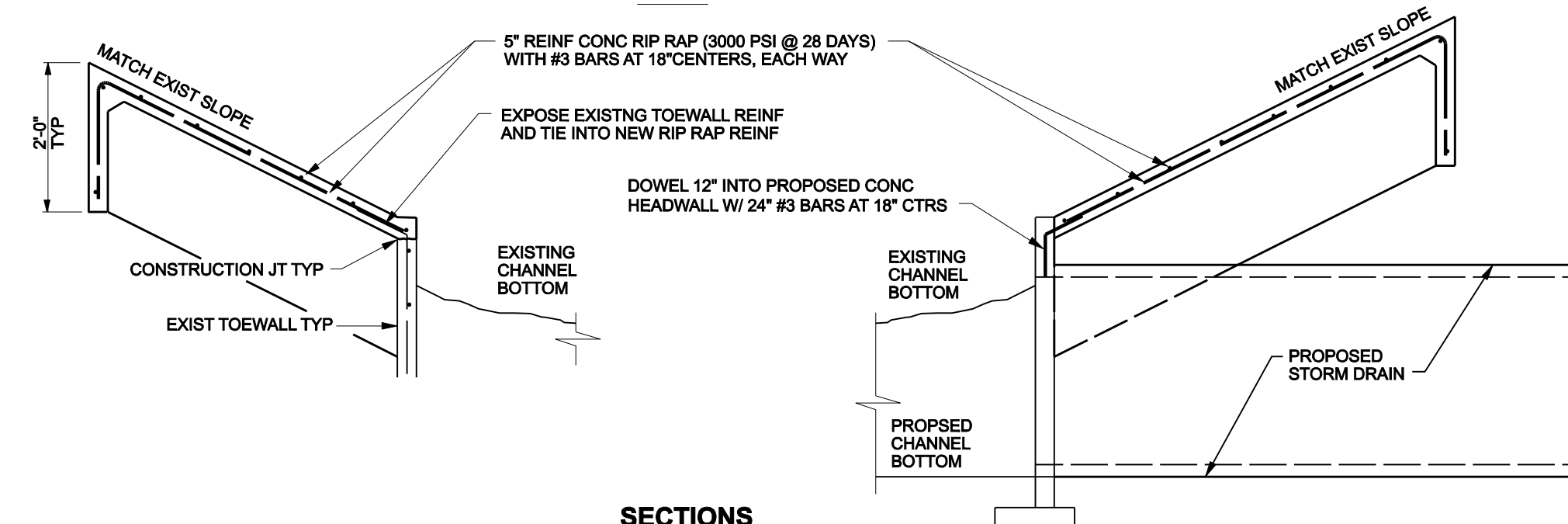


PIPE COLLAR DETAIL

- NOTES
- THIS PROCEDURE/DETAIL WILL ONLY BE USED WHEN 1 PREFAB REDUCTION IS NOT POSSIBLE.
 - CONCRETE FOR COLLAR WILL NOT BE PAID FOR DIRECTLY, BUT WILL BE CONSIDERED SUBSIDIARY TO THE VARIOUS OTHER BIDS.
 - CONCRETE SHALL BE 5 SACK 3000 PSI.



PLAN



SECTIONS

CONCRETE RIP RAP - SD C-2 & C-3
NOT TO SCALE

NO.	REVISION	BY	DATE

Addison! TOWN OF ADDISON
DALLAS COUNTY, TEXAS
PAVING, DRAINAGE & UTILITY IMPROVEMENTS
VITRUVIAN WAY & PONTE AVENUE

STORM DRAIN DETAILS

icon Consulting Engineers, Inc.		250 W. Southlake Blvd., Suite 117			
Civil Engineers - Designers - Planners		Southlake, Tx 76092 (817) 552-6210			
PROJECT	DESIGN	DRAWN	DATE	FILE	SHEET
5029-01	ICE	ICE	MAY 7 2009	PW# 2009-01	42

PAVING, DRAINAGE, & UTILITY IMPROVEMENTS - VITRUVIAN WAY & PONTE AVENUE