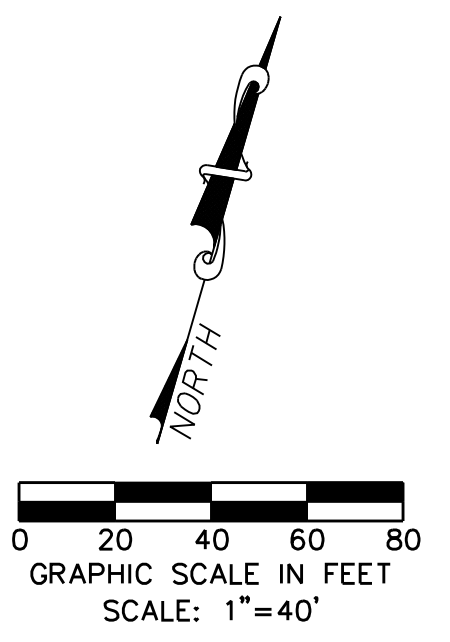
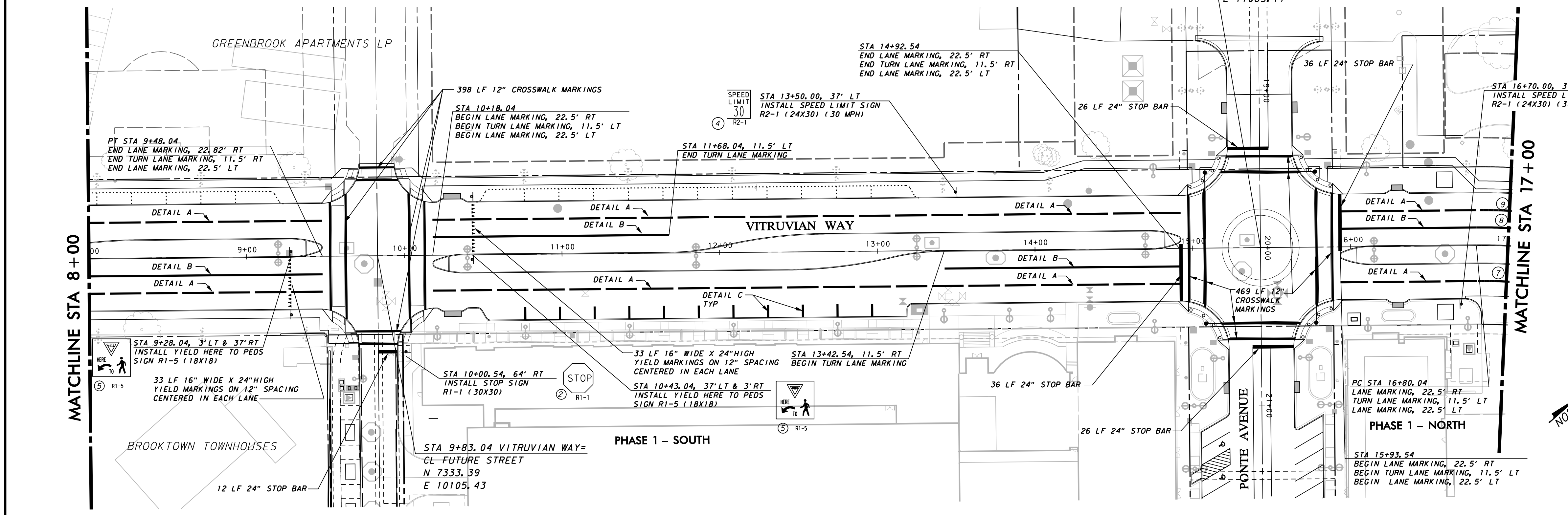


**PAVEMENT MARKING & SIGNAGE NOTES:**

- SIGN LOCATIONS SHOWN ON PLANS ARE DIAGRAMMATIC. SIGNS WILL BE PLACED IN CONFORMANCE WITH THE MANUAL ON UNIFORM TRAFFIC CONTROL DEVICES, LATEST EDITION.
- REFLECTIVE SHEETING WILL BE DESIGNATED AS:  
TYPE A=ENGINEER GRADE  
TYPE B=SUPER ENGINEER GRADE  
TYPE C=HIGH INTENSITY PRISMATIC
- NO BREAKAWAY SUPPORT IS TO BE PROVIDED.
- DO NOT REMOVE EXISTING PAVEMENT MARKINGS OR SIGNAGE PRIOR TO NEW ROADWAY OPENING TO TRAFFIC.
- ALL PAVEMENT MARKINGS TO BE ALKYD THERMOPLASTIC WITH 0.090 INCHES THICKNESS.



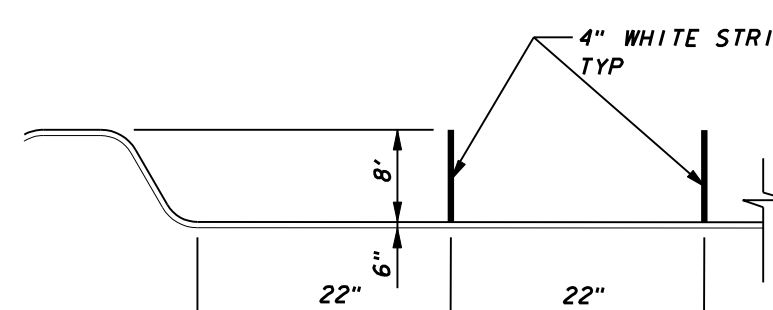
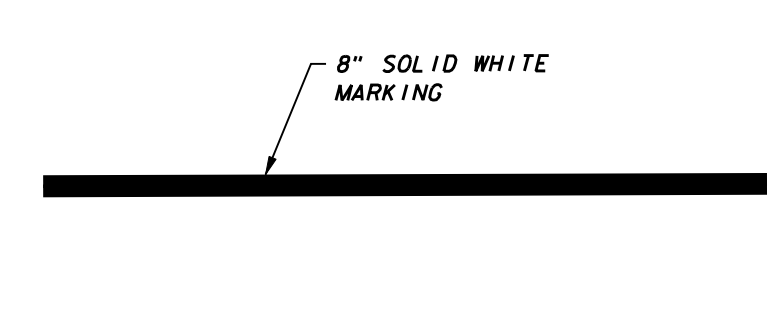
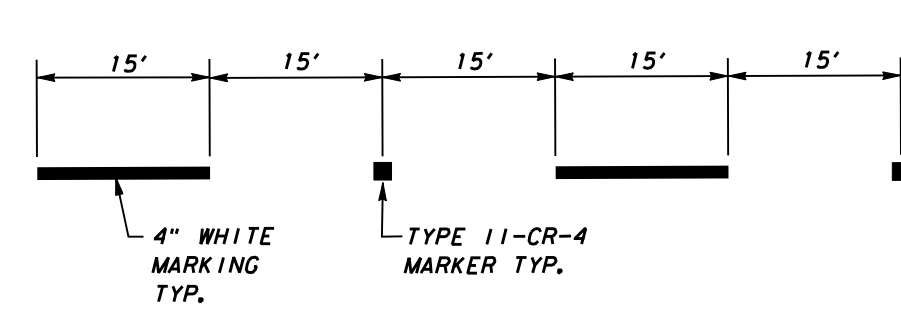
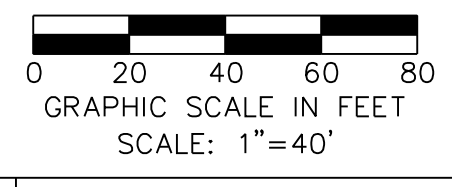
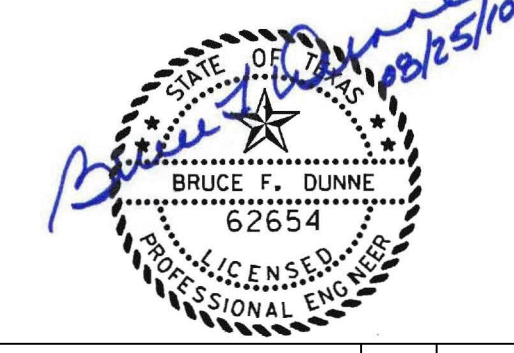
| SUMMARY OF SMALL SIGNS (WITHOUT REMOVABLE COPY) |           |                   |                          |                     |                |                 |               |          |
|---|-----------|-------------------|--------------------------|---------------------|----------------|-----------------|---------------|----------|
| SIGN NO.  | SIGN TYPE | SIGN TEXT         | SIGN DIMENSIONS (INCHES) | REFLECTIVE SHEETING | PLYWOOD TYPE A | ALUMINUM TYPE A | TYPE OF MOUNT | QUANTITY |
| 1   | R1-2      | YIELD             | 30X30X30                 | C                   |                | X               | A             | 1        |
| 2   | R1-1      | STOP              | 30X30                    | C                   |                | X               | A             | 1        |
| 3   | RG-1R     | ONE WAY RIGHT     | 36X12                    | C                   |                | X               | A             | 1        |
| 4   | R2-1      | SPEED LIMIT       | 24X30                    | C                   |                | X               | A             | 3        |
| 5   | R1-5      | YIELD HERE TO PDS | 18X18                    | C                   |                | X               | A             | 4        |



| CURVE DATA |         |             |          |
|------------|---------|-------------|----------|
| NO.        | RADIUS  | DELTA       | LENGTH   |
| 1          | 681.33' | 10° 23' 29" | 123.57'  |
| 2          | 733.51' | 12° 00' 37" | 153.76'  |
| 3          | 722.51' | 12° 00' 37" | 67.08'   |
| 4          | 711.51' | 44° 02' 54" | 68.10'   |
| 5          | 700.51' | 10° 01' 16" | 122.52'  |
| 6          | 780.12' | 33° 48' 46" | 298.55 4 |
| 7          | 361.51' | 44° 34' 23" | 281.23'  |
| 8          | 395.51' | 5° 51' 35"  | 40.45'   |
| 9          | 406.51' | 44° 34' 23" | 316.24'  |

**WARNING**  
CONTRACTOR IS TO CONTACT TEXAS ONE-CALL SYSTEM (1-800-245-4545) OR OTHER UTILITY LOCATING SERVICES AT LEAST 48 HOURS PRIOR TO CONSTRUCTION ACTIVITIES. ICON CONSULTING ENGINEERS, INC. IS NOT RESPONSIBLE FOR KNOWING ALL EXISTING UTILITIES IN THE PROJECT AREA NOR FOR DEPICTING THE EXACT LOCATIONS OF UTILITIES ON THESE DRAWINGS.

BM #1 REF. ELEVATION = 559.47  
SQUARE CUT IN TOP OF CURB, SOUTH MEDIAN END NOSE, MARSH LANE 1127' NORTH OF VITRUVIAN WAY.  
BM #2 REF. ELEVATION = 547.84  
SQUARE CUT IN TOP OF CURB, NORTH MEDIAN END NOSE, AT INTERSECTION OF VITRUVIAN WAY AND MARSH LANE.



| NO. | REVISION | BY | DATE |
|-----|----------|----|------|
|     |          |    |      |

**Addison** TOWN OF ADDISON  
DALLAS COUNTY, TEXAS

PAVING, DRAINAGE & UTILITY IMPROVEMENTS  
VITRUVIAN WAY & PONTE AVENUE

PAVEMENT MARKING AND SIGNAGE-VW  
STA 0+00.00 TO STA 17+00.00

|  |   |            |                  |                   |           |
|--|---|------------|------------------|-------------------|-----------|
| <b>icon</b> Consulting Engineers, Inc.<br>Civil Engineers - Designers - Planners | 250 W. Southlake Blvd., Suite 117<br>Southlake, Tx 76092 (817) 552-6210 |            |                  |                   |           |
| PROJECT: 5029-01   | DESIGN: ICE   | DRAWN: ICE | DATE: MAY 7 2009 | FILE: PW# 2009-01 | SHEET: 46 |