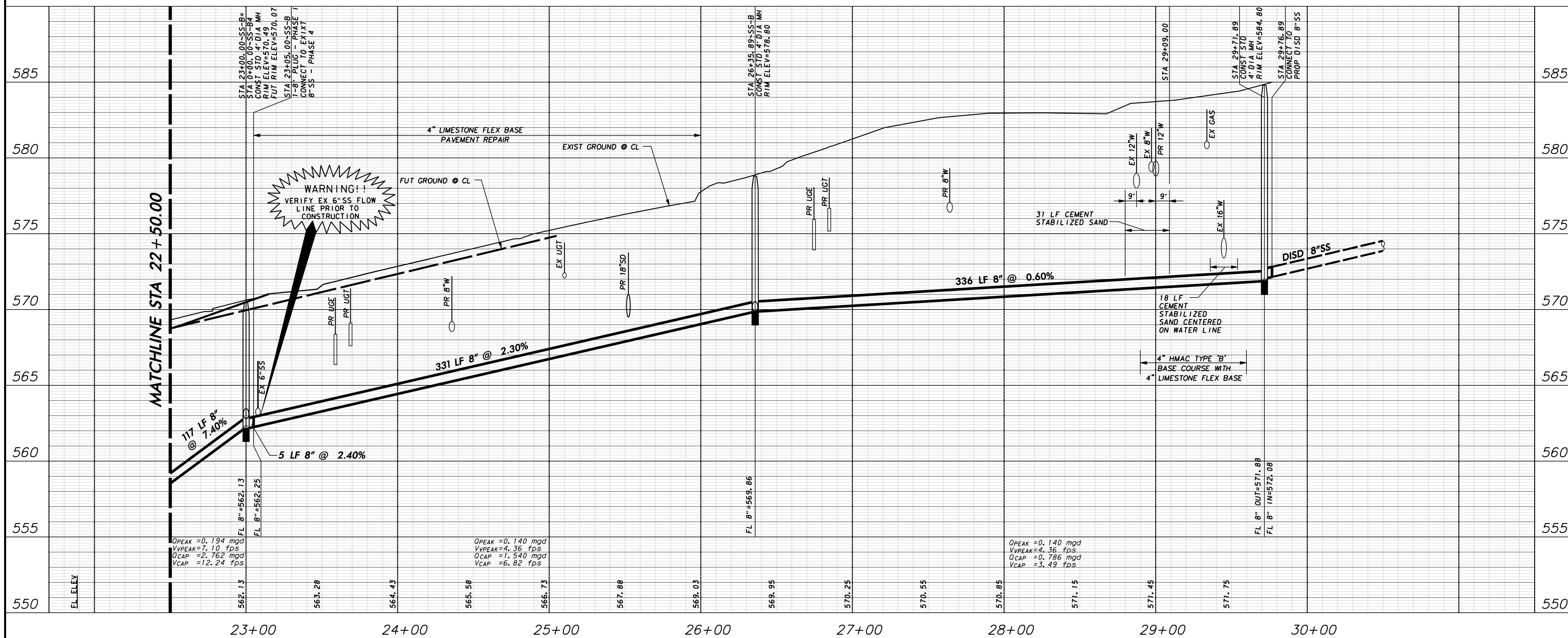
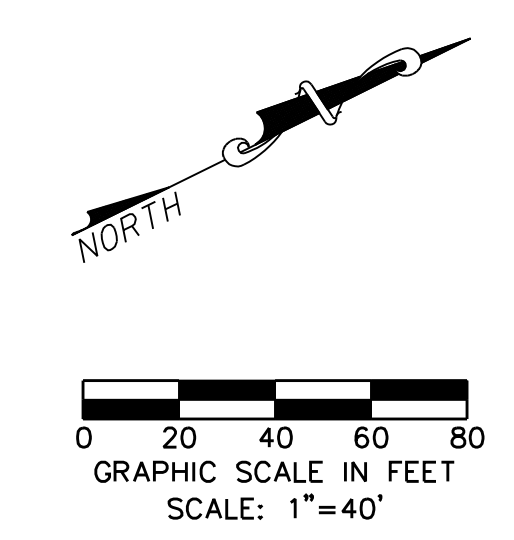
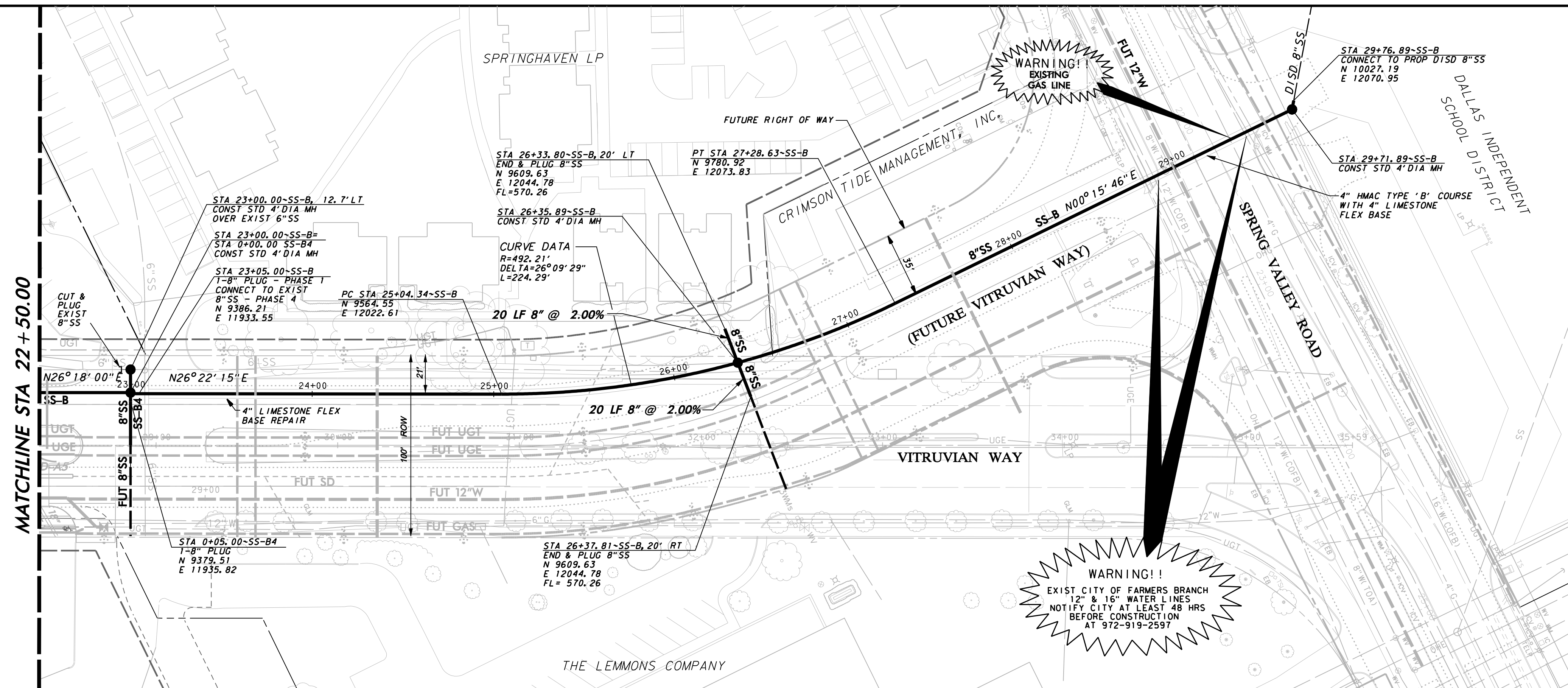


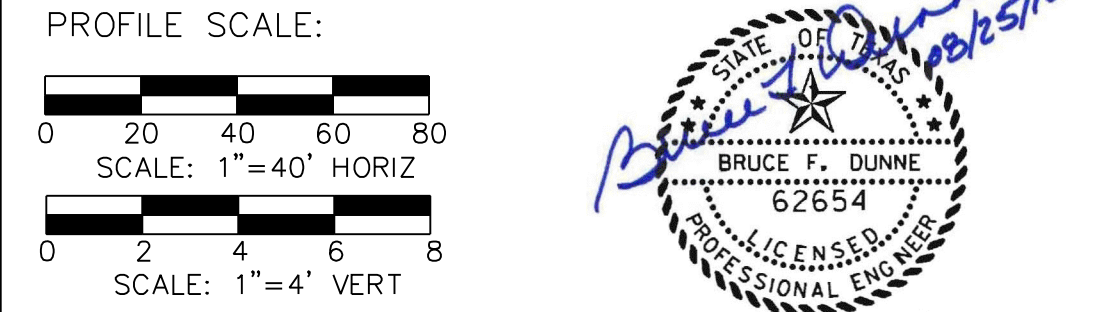
MATCHLINE STA 22 + 50.00

MATCHLINE STA 22 + 50.00



**WARNING**  
 CONTRACTOR IS TO CONTACT TEXAS ONE-CALL SYSTEM (1-800-245-4545) OR OTHER UTILITY LOCATING SERVICES AT LEAST 48 HOURS PRIOR TO CONSTRUCTION ACTIVITIES. ICON CONSULTING ENGINEERS, INC. IS NOT RESPONSIBLE FOR KNOWING ALL EXISTING UTILITIES IN THE PROJECT AREA NOR FOR DEPICTING THE EXACT LOCATIONS OF UTILITIES ON THESE DRAWINGS.

BM #1 REF. ELEVATION = 559.47  
 SQUARE CUT IN TOP OF CURB, SOUTH MEDIAN END NOSE, MARSH LANE 1127' NORTH OF VITRUVIAN WAY.  
 BM #2 REF. ELEVATION = 547.84  
 SQUARE CUT IN TOP OF CURB, NORTH MEDIAN END NOSE, AT INTERSECTION OF VITRUVIAN WAY AND MARSH LANE.



BRUCE F. DUNNE  
 LICENSED PROFESSIONAL ENGINEER  
 STATE OF TEXAS  
 62654

NO.	REVISION	BY	DATE

**Addison!** TOWN OF ADDISON  
 DALLAS COUNTY, TEXAS  
 PAVING, DRAINAGE & UTILITY IMPROVEMENTS  
 VITRUVIAN WAY & PONTE AVENUE

SANITARY SEWER PLAN & PROFILE-VW  
 LINE B-STA. 22+50.00 TO 29+76.89

<b>icon</b> Consulting Engineers, Inc. Civil Engineers - Designers - Planners	250 W. Southlake Blvd., Suite 117 Southlake, TX 76092 (817) 552-6210				
PROJECT: 5029-01	DESIGN: ICE	DRAWN: ICE	DATE: MAY 7 2009	FILE: PW# 2009-01	SHEET: 69

PAVING, DRAINAGE, & UTILITY IMPROVEMENTS - VITRUVIAN WAY & PONTE AVENUE