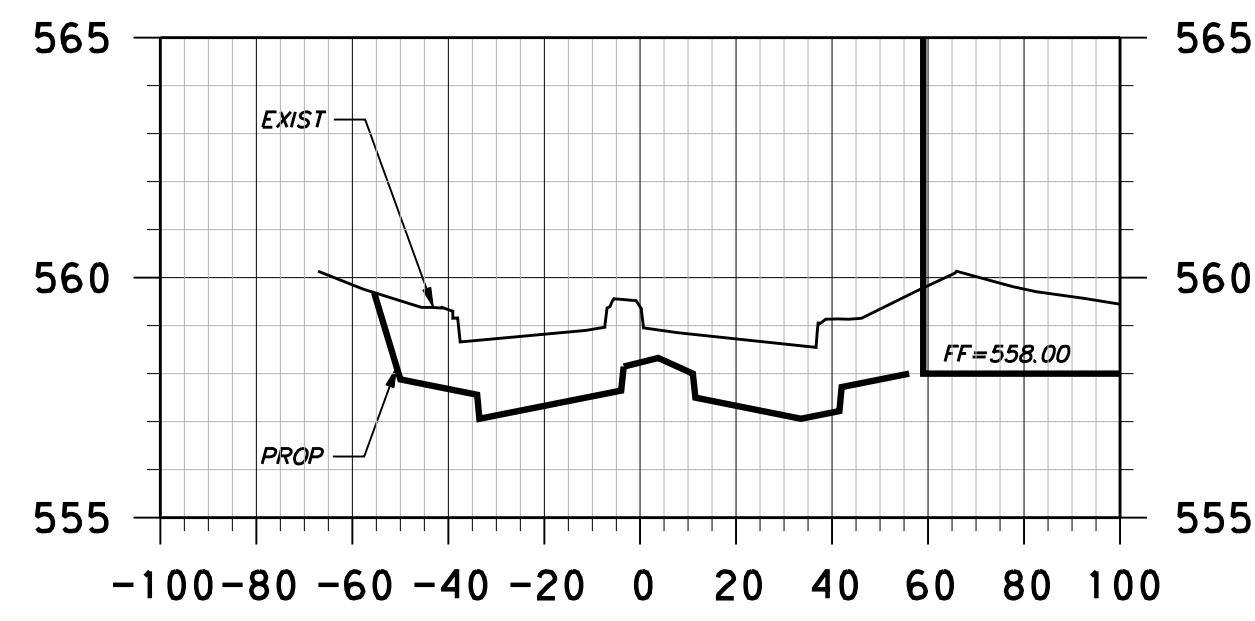
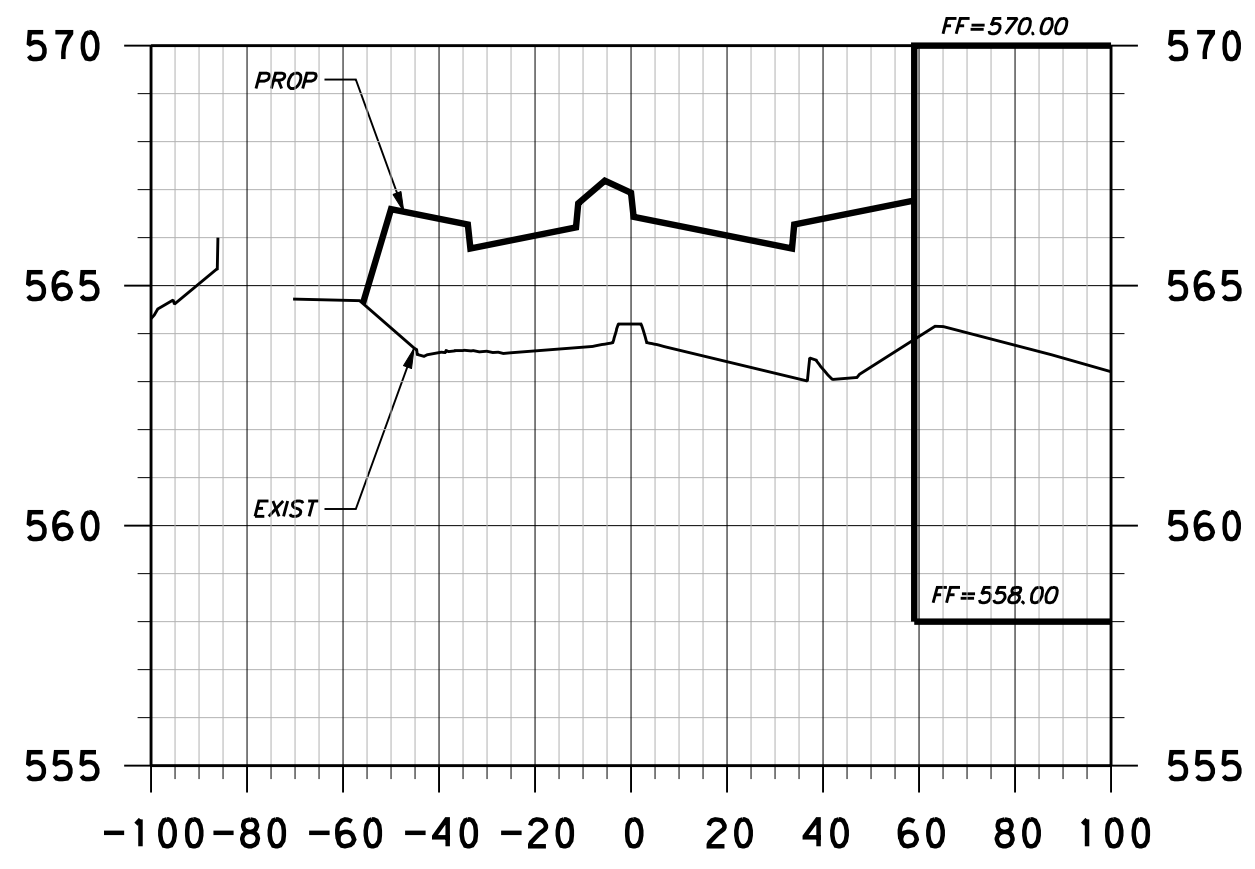


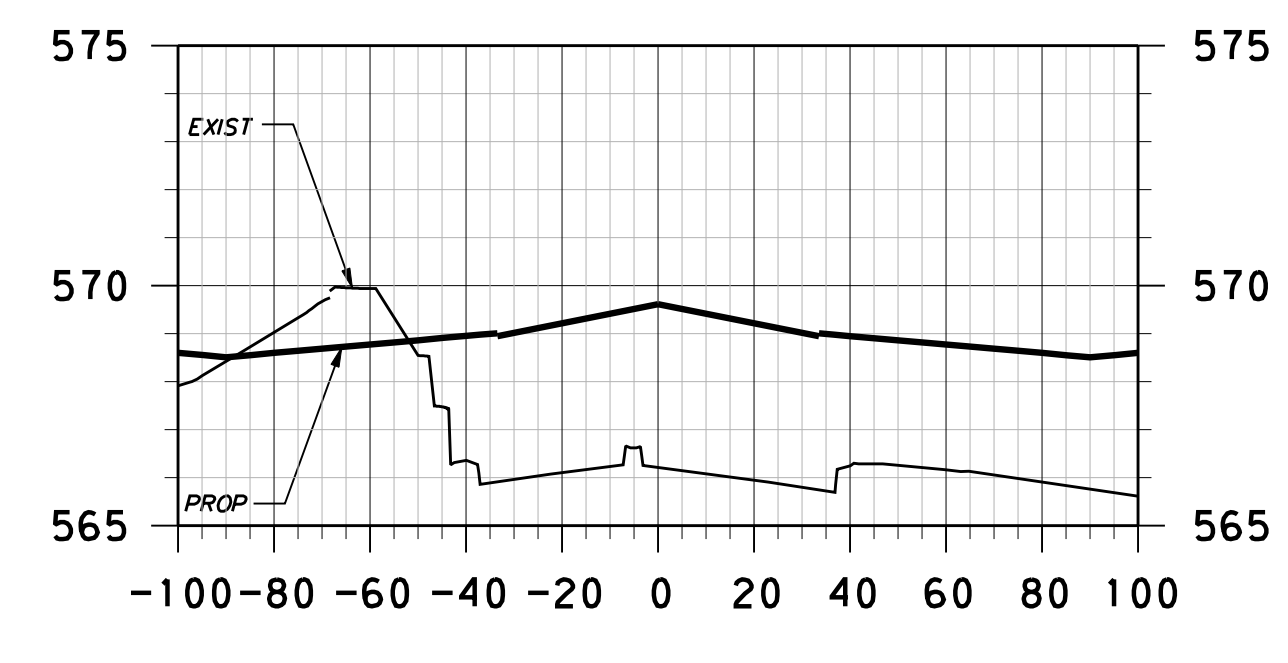
10+00.00



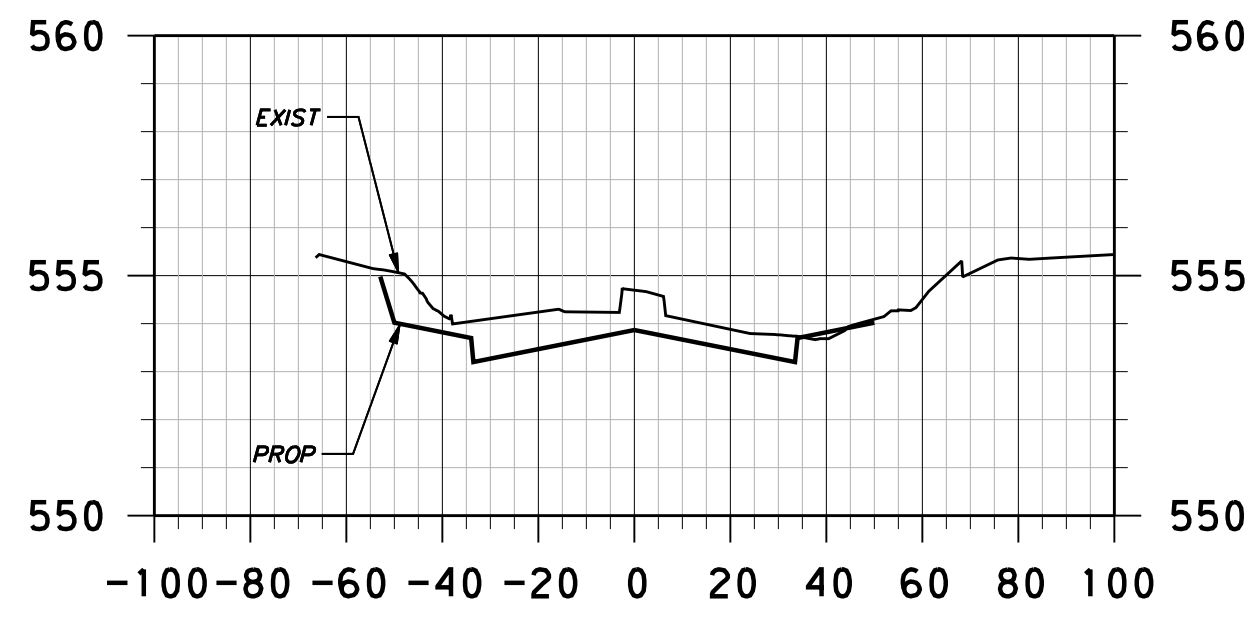
12+00.00



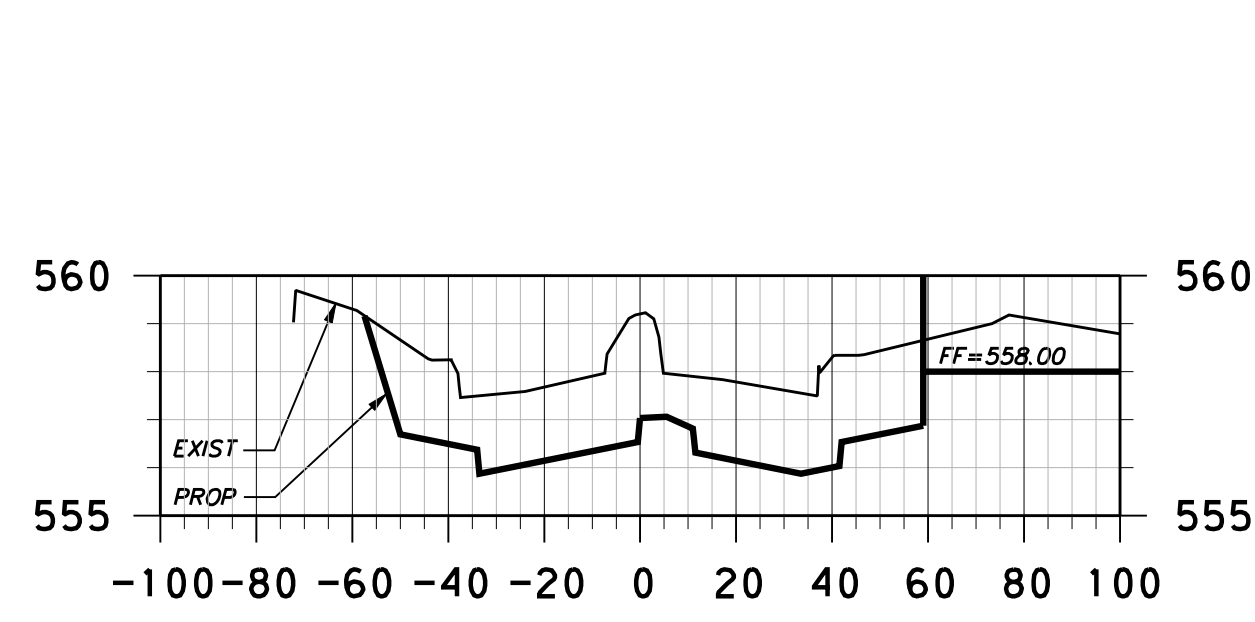
14+00.00



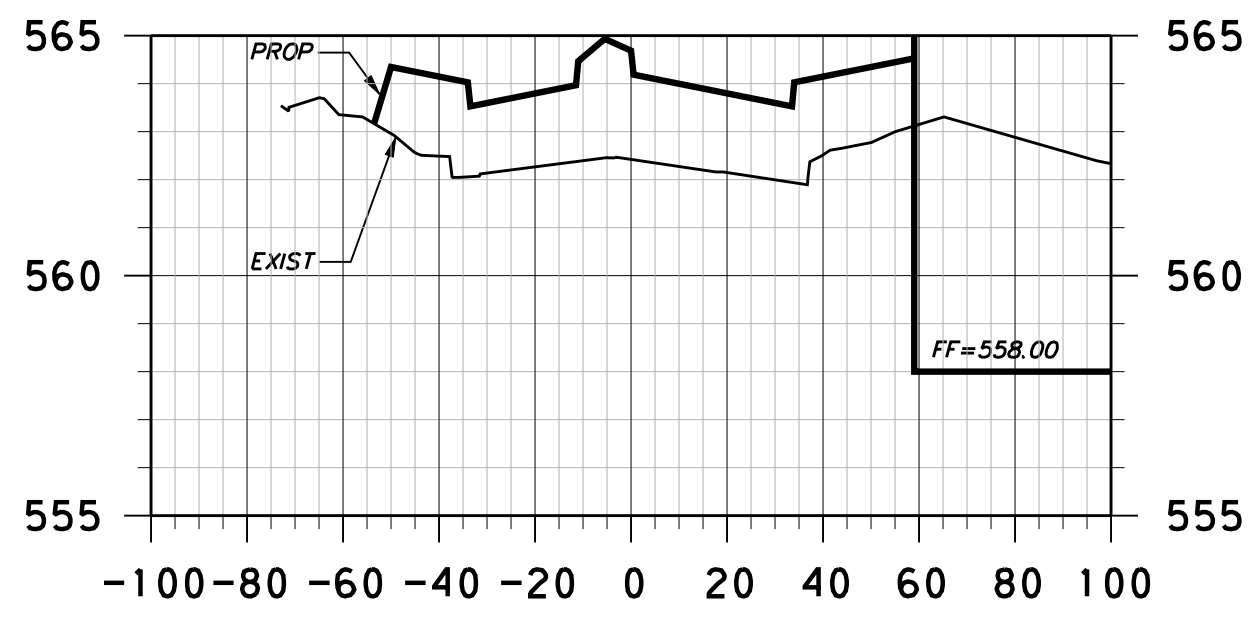
15+50.00



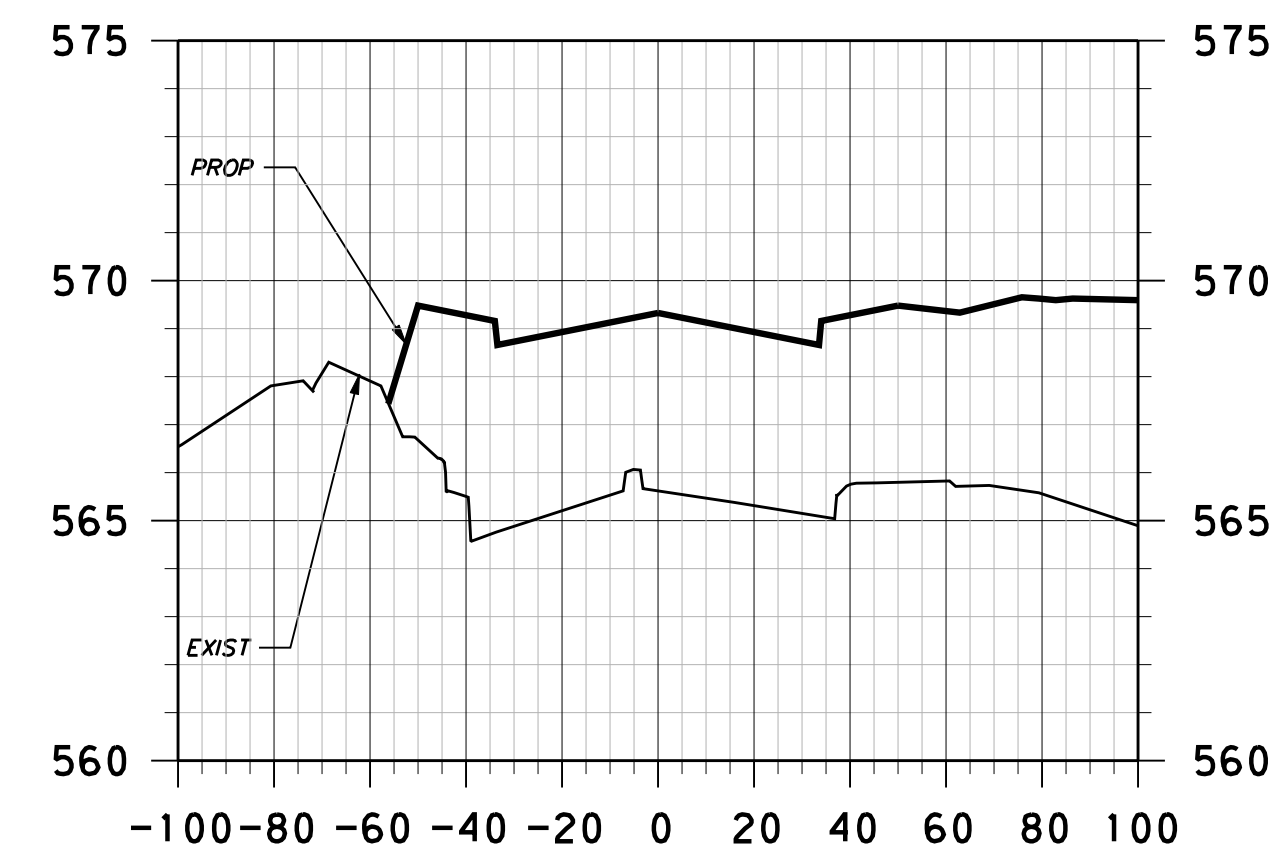
9+50.00



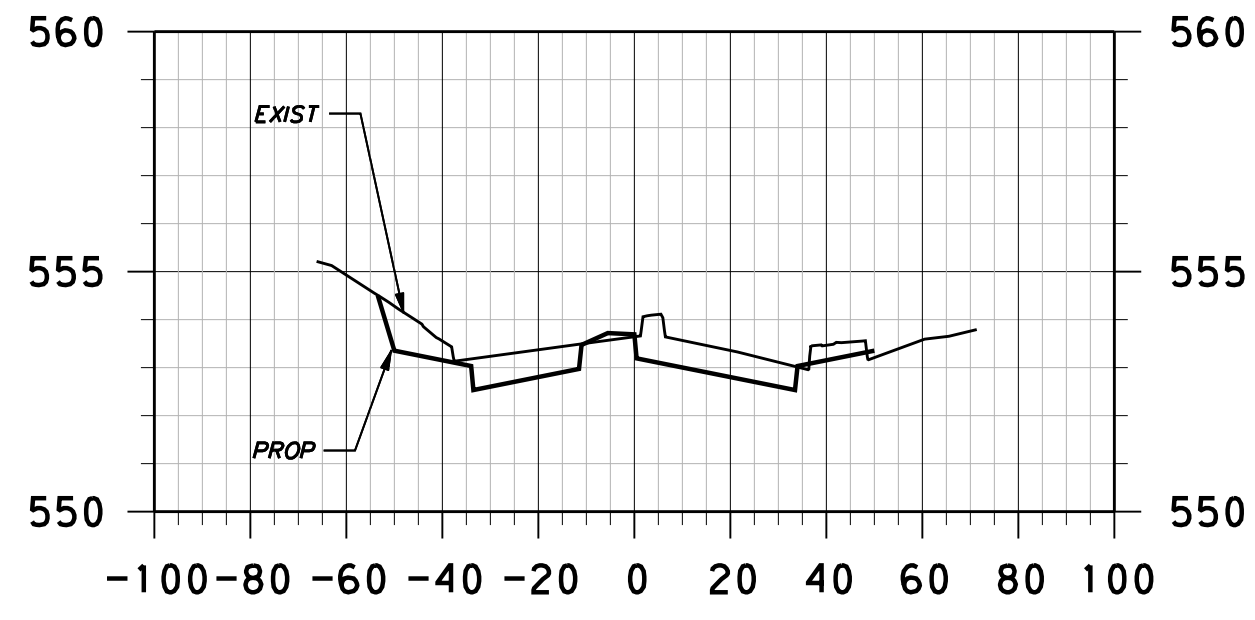
11+50.00



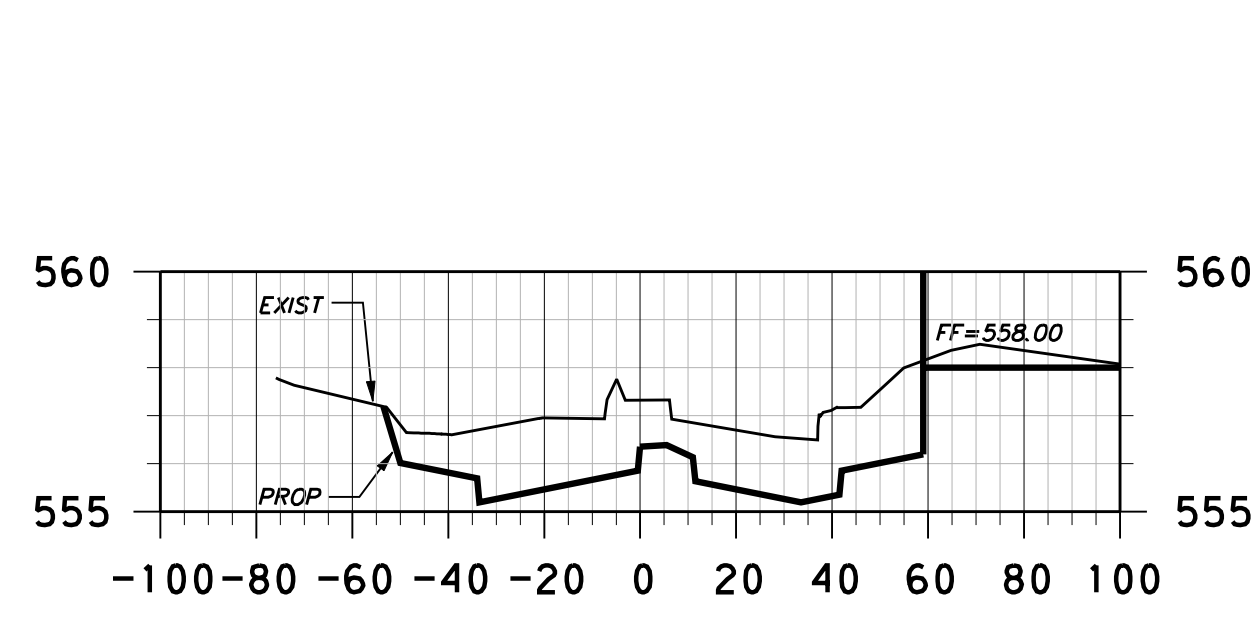
13+50.00



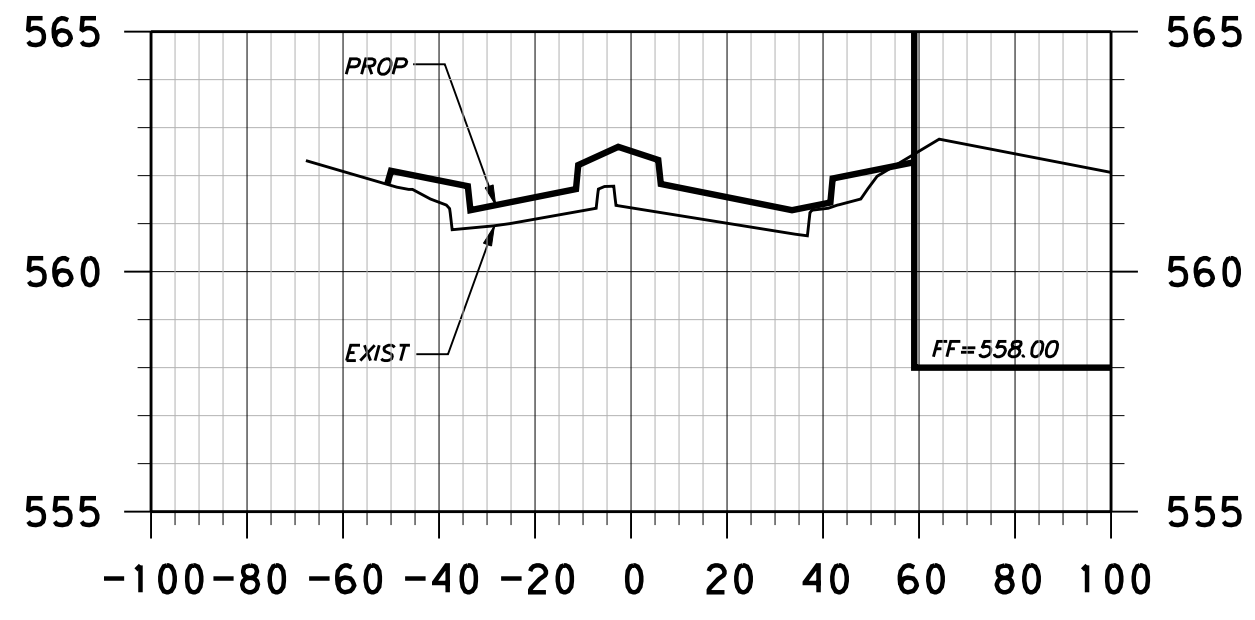
15+00.00



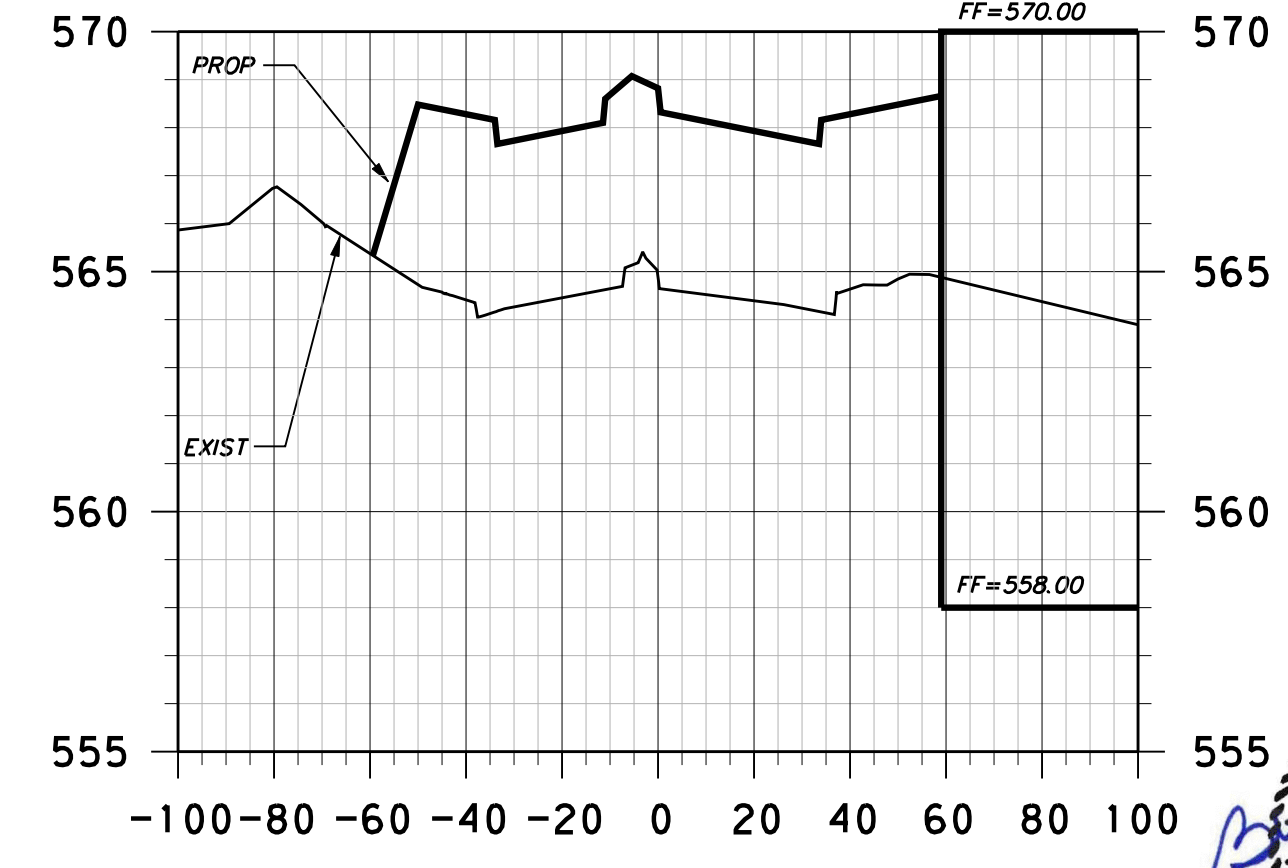
9+00.00



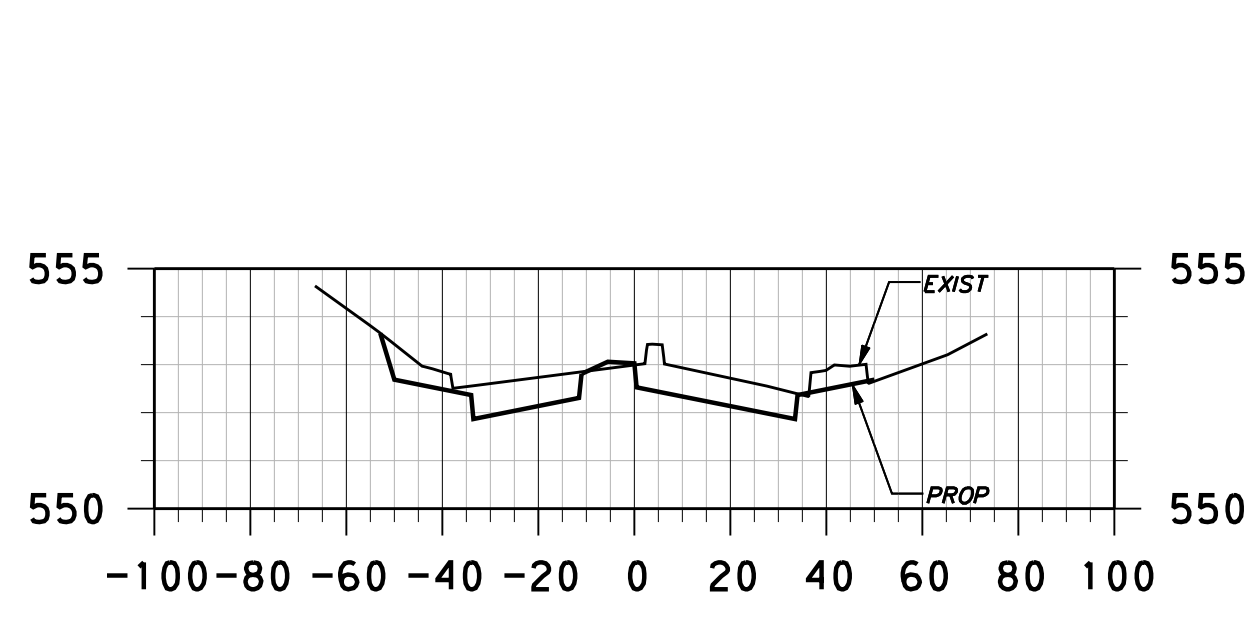
11+00.00



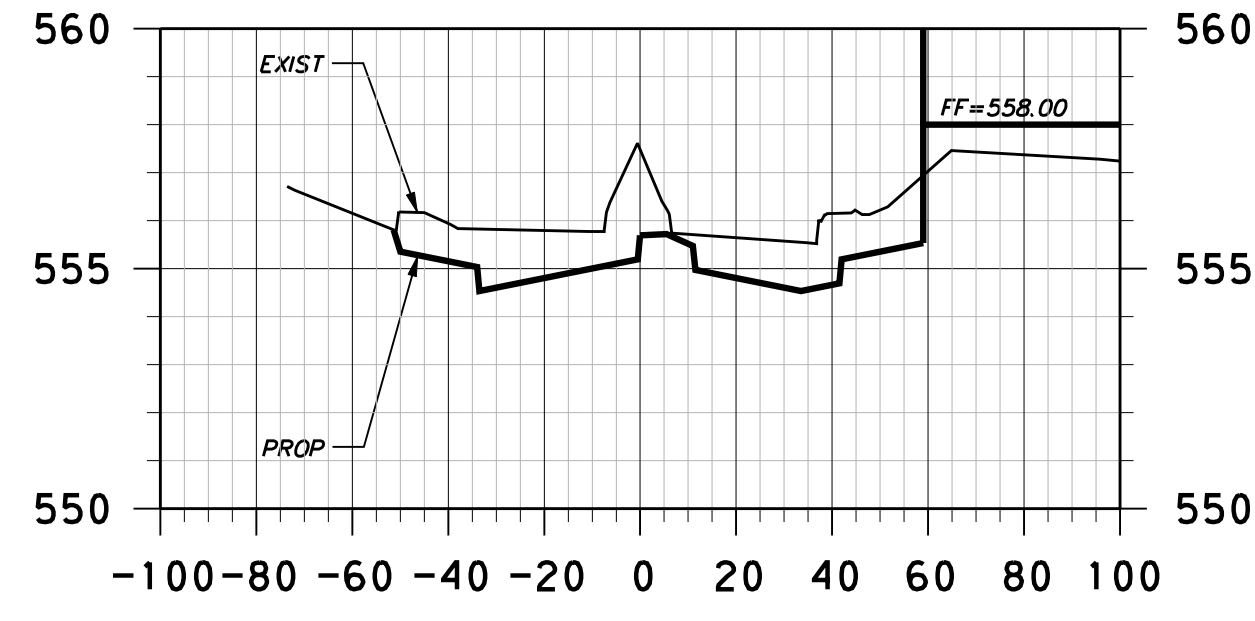
13+00.00



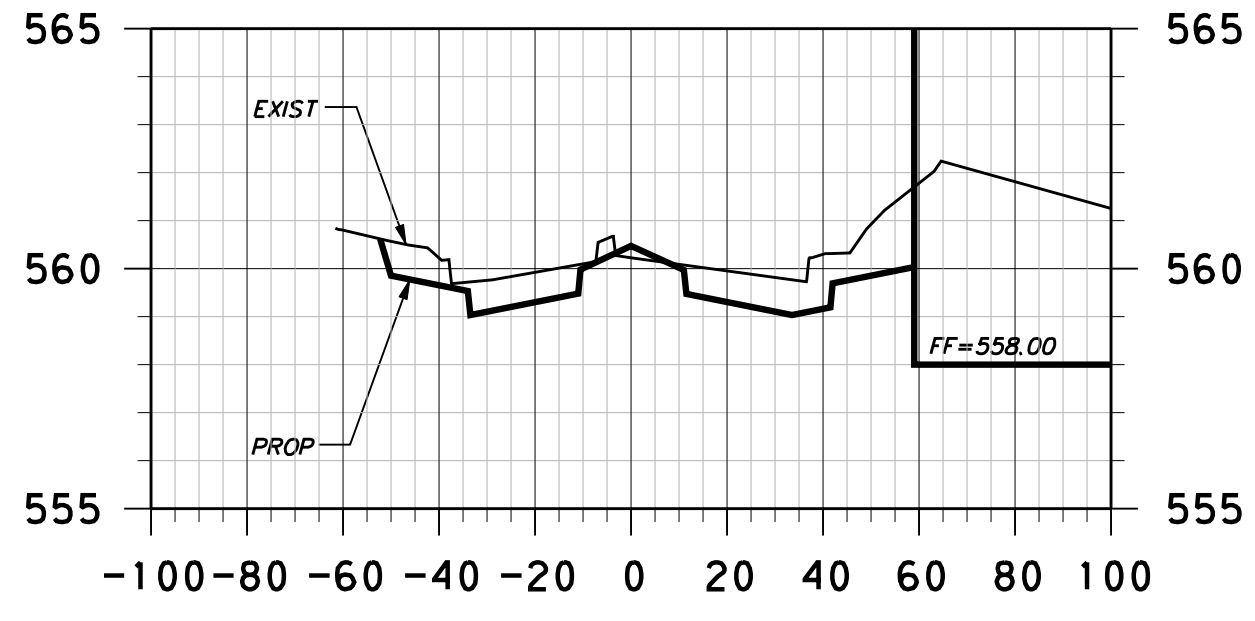
14+50.00



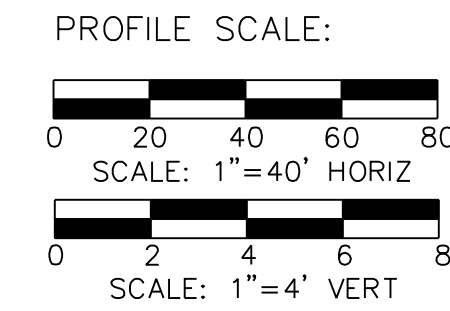
8+50.00



10+50.00



12+50.00



NO.	REVISION	BY	DATE

Addison! TOWN OF ADDISON
DALLAS COUNTY, TEXAS

PAVING, DRAINAGE & UTILITY IMPROVEMENTS
VITRUVIAN WAY & PONTE AVENUE

CROSS-SECTIONS-VW
STA 8+50.00 TO STA 15+50.00

icon Consulting Engineers, Inc. 250 W. Southlake Blvd., Suite 117
Civil Engineers - Designers - Planners Southlake, Tx 76092 (817) 552-6210

PROJECT	DESIGN	DRAWN	DATE	FILE	SHEET
5029-01	ICE	ICE	MAY 7 2009	PW# 2009-01	92

PAVING, DRAINAGE, & UTILITY IMPROVEMENTS - VITRUVIAN WAY & PONTE AVENUE