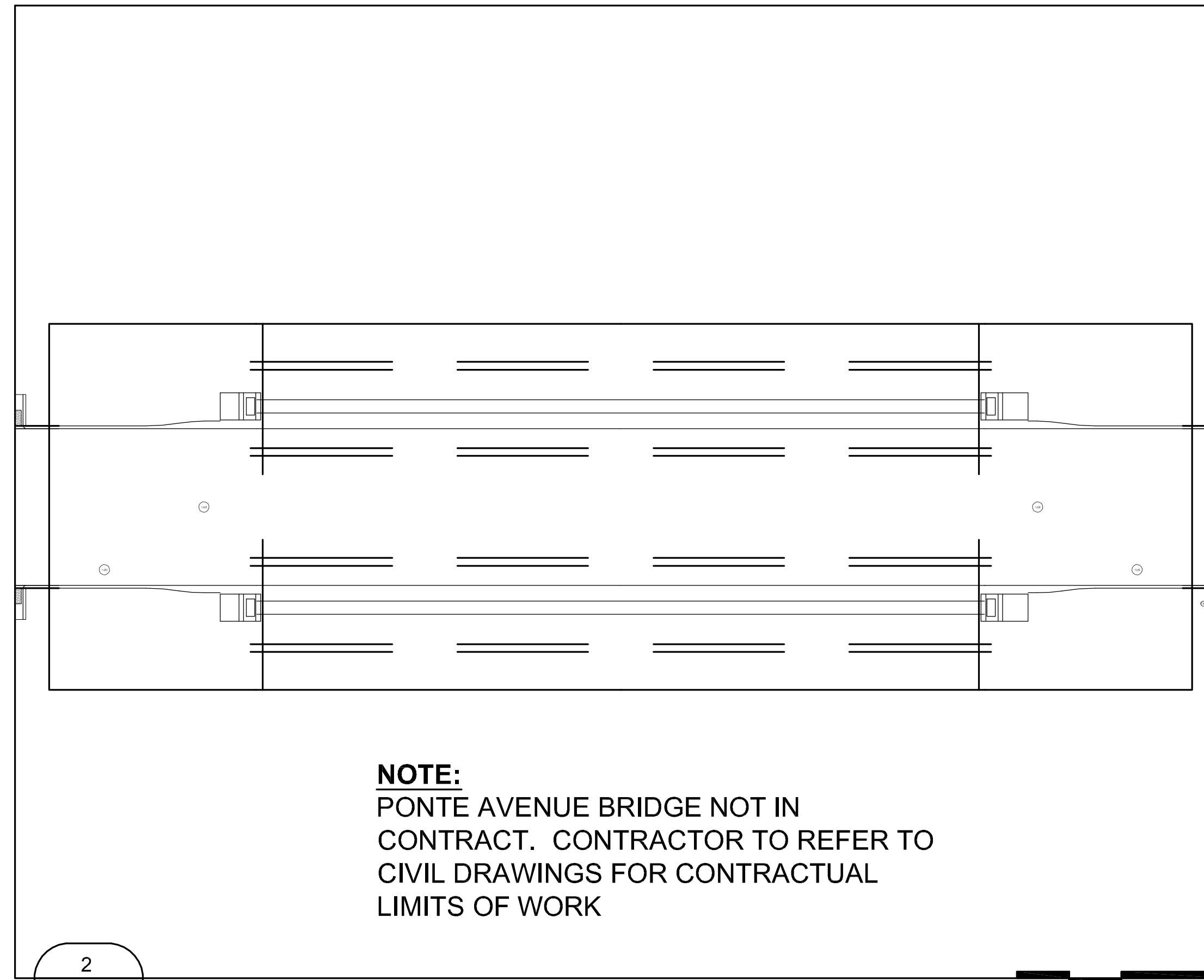
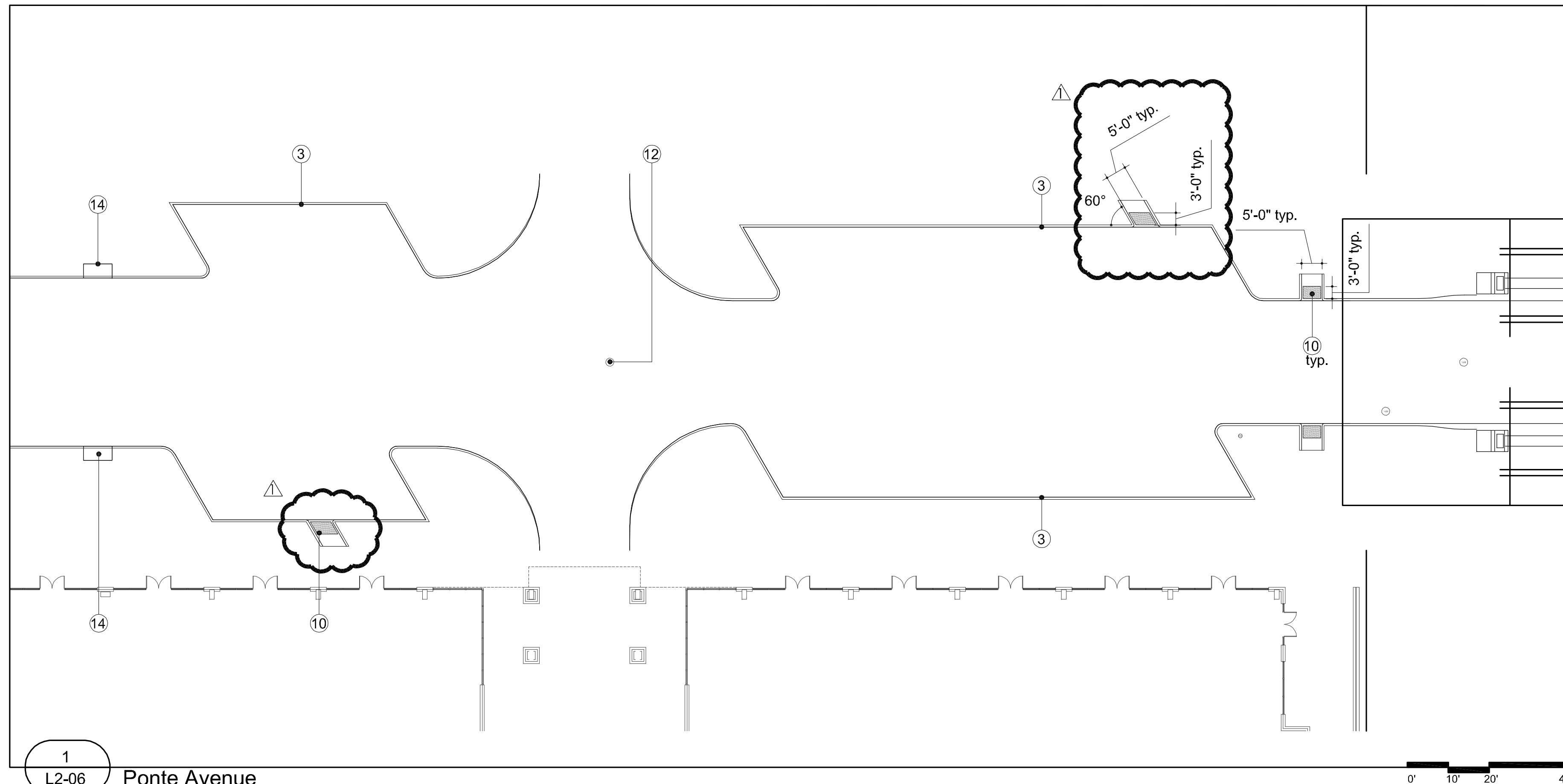


3
L2-06 Ponte Avenue
Cul de Sac



2
L2-06 Ponte Avenue Bridge

NOTE:
PONTE AVENUE BRIDGE NOT IN
CONTRACT. CONTRACTOR TO REFER TO
CIVIL DRAWINGS FOR CONTRACTUAL
LIMITS OF WORK



1
L2-06 Ponte Avenue

- MATERIALS LEGEND**
- ① PIP concrete paving
ref. Civil, Structural
 - ② PIP concrete band
ref. Plan for width
 - ③ 6" concrete curb
ref. Civil
 - ④ Stop bar
ref. Civil
 - ⑤ Pavestone City Stone I
2 3/8" thickness Travertine Blend color
on 4" concrete base ref. Civil
 - ⑥ Not Used
 - ⑦ Pavestone City Stone I
3 1/8" thickness Travertine Blend color
on 4" concrete base ref. Civil
 - ⑧ Pavestone City Stone I
3 1/8" thickness Bellows Brown color
on 4" concrete base ref. Civil
 - ⑨ Not used
 - ⑩ Pavestone ADA Concrete Paver
running bond pattern Bellows Brown color
on 4" concrete base ref. Civil
 - ⑪ Traffic signal
ref. Traffic Engineer
 - ⑫ Manhole cover
ref. Civil
 - ⑬ Not Used
 - ⑭ Storm drain inlet
ref. Civil
 - ⑮ 18" concrete gutter
ref. Civil



ISSUED FOR CONSTRUCTION
KEVIN SLOAN STUDIO
Landscape Architect KEVIN W. SLOAN
Lic. No. 2296 Date 8/17/09

NO.	REVISION	BY	DATE
1	ASI 1		08/17/09

Addison! TOWN OF ADDISON
DALLAS COUNTY, TEXAS
PAVING, DRAINAGE & UTILITY IMPROVEMENTS
VITRUVIAN WAY AND PONTE AVENUE

Ponte Avenue - Enlargements

KEVIN SLOAN STUDIO 4145 Travis, Suite 105
Dallas, Texas 75204 (214) 379-1061

PROJECT	DESIGN	DRAWN	DATE	FILE	SHEET
5029-01	KWS		AUG 2009	PW # 2009-01	L2-06

PAVING, DRAINAGE, & UTILITY IMPROVEMENTS - VITRUVIAN WAY & PONTE AVENUE