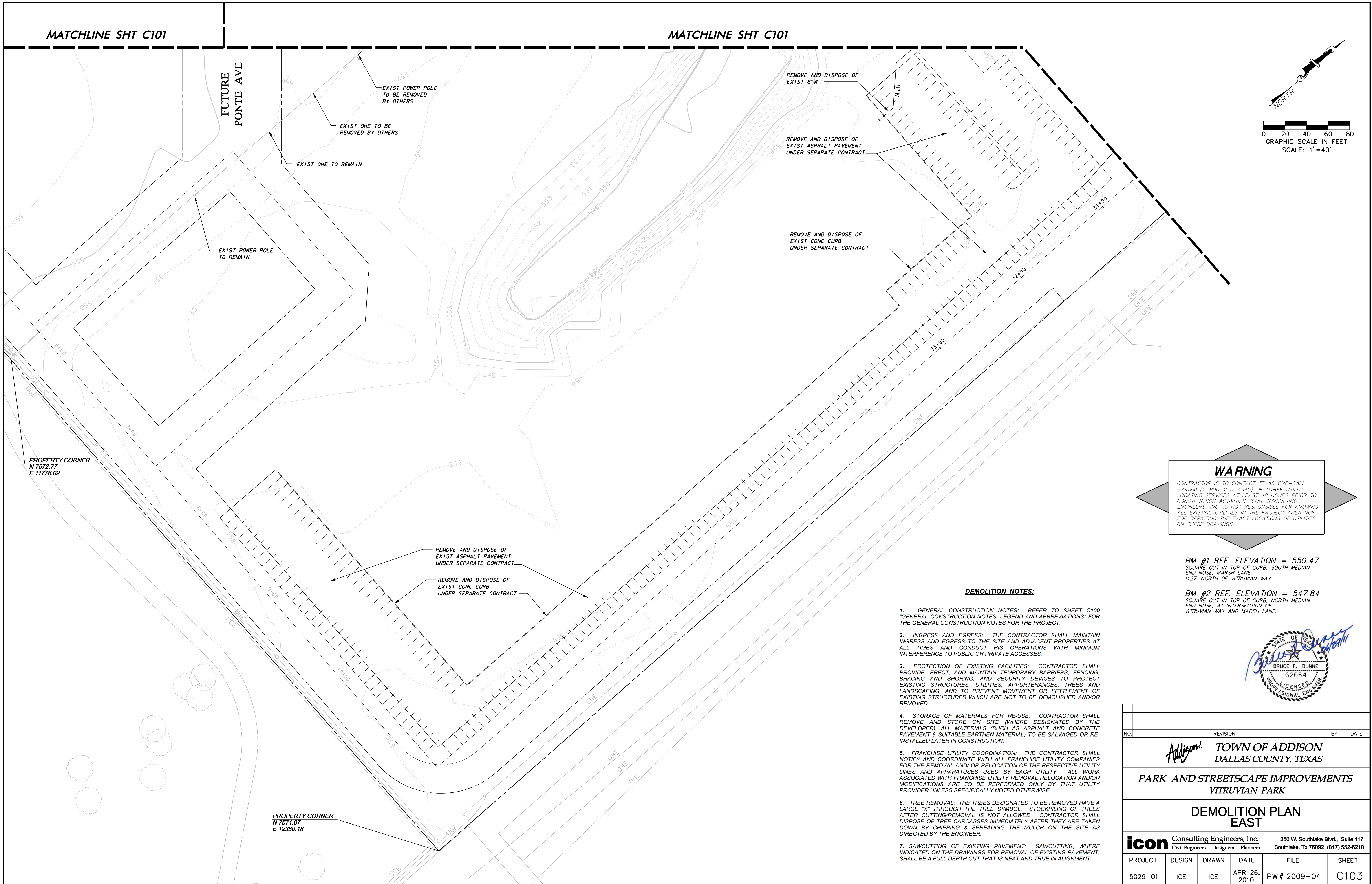
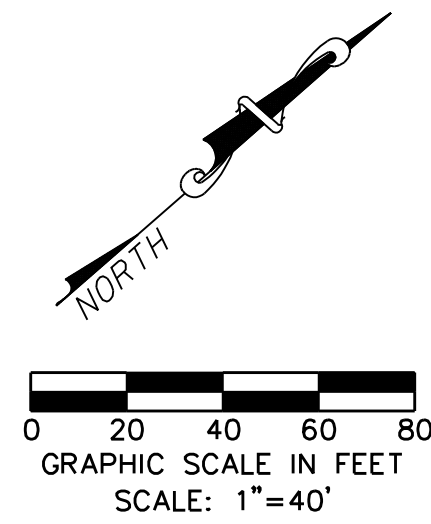


MATCHLINE SHT C101

MATCHLINE SHT C101



WARNING

CONTRACTOR IS TO CONTACT TEXAS ONE-CALL SYSTEM (1-800-245-4545) OR OTHER UTILITY LOCATING SERVICES AT LEAST 48 HOURS PRIOR TO CONSTRUCTION ACTIVITIES. ICON CONSULTING ENGINEERS, INC. IS NOT RESPONSIBLE FOR KNOWING ALL EXISTING UTILITIES IN THE PROJECT AREA NOR FOR DEPICTING THE EXACT LOCATIONS OF UTILITIES ON THESE DRAWINGS.


BM #1 REF. ELEVATION = 559.47
SQUARE CUT IN TOP OF CURB, SOUTH MEDIAN
END NOSE, MARSH LANE
1127' NORTH OF VITRUVIAN WAY.

BM #2 REF. ELEVATION = 547.84
SQUARE CUT IN TOP OF CURB, NORTH MEDIAN
END NOSE, AT INTERSECTION OF
VITRUVIAN WAY AND MARSH LANE.

DEMOLITION NOTES:

1. GENERAL CONSTRUCTION NOTES: REFER TO SHEET C100 "GENERAL CONSTRUCTION NOTES, LEGEND AND ABBREVIATIONS" FOR THE GENERAL CONSTRUCTION NOTES FOR THE PROJECT.
2. INGRESS AND EGRESS: THE CONTRACTOR SHALL MAINTAIN INGRESS AND EGRESS TO THE SITE AND ADJACENT PROPERTIES AT ALL TIMES AND CONDUCT HIS OPERATIONS WITH MINIMUM INTERFERENCE TO PUBLIC OR PRIVATE ACCESSSES.
3. PROTECTION OF EXISTING FACILITIES: CONTRACTOR SHALL PROVIDE, ERECT, AND MAINTAIN TEMPORARY BARRIERS, FENCING, BRACING AND SHORING, AND SECURITY DEVICES TO PROTECT EXISTING STRUCTURES, UTILITIES, APPURTENANCES, TREES AND LANDSCAPING, AND TO PREVENT MOVEMENT OR SETTLEMENT OF EXISTING STRUCTURES WHICH ARE NOT TO BE DEMOLISHED AND/OR REMOVED.
4. STORAGE OF MATERIALS FOR RE-USE: CONTRACTOR SHALL REMOVE AND STORE ON SITE (WHERE DESIGNATED BY THE DEVELOPER), ALL MATERIALS (SUCH AS ASPHALT AND CONCRETE PAVEMENT & SUITABLE EARTHEN MATERIAL) TO BE SALVAGED OR RE-INSTALLED LATER IN CONSTRUCTION.
5. FRANCHISE UTILITY COORDINATION: THE CONTRACTOR SHALL NOTIFY AND COORDINATE WITH ALL FRANCHISE UTILITY COMPANIES FOR THE REMOVAL AND/OR RELOCATION OF THE RESPECTIVE UTILITY LINES AND APPARATUSES USED BY EACH UTILITY. ALL WORK ASSOCIATED WITH FRANCHISE UTILITY REMOVAL RELOCATION AND/OR MODIFICATIONS ARE TO BE PERFORMED ONLY BY THAT UTILITY PROVIDER UNLESS SPECIFICALLY NOTED OTHERWISE.
6. TREE REMOVAL: THE TREES DESIGNATED TO BE REMOVED HAVE A LARGE "X" THROUGH THE TREE SYMBOL. STOCKPILING OF TREES AFTER CUTTING/REMOVAL IS NOT ALLOWED. CONTRACTOR SHALL DISPOSE OF TREE CARCASSES IMMEDIATELY AFTER THEY ARE TAKEN DOWN BY CHIPPING & SPREADING THE MULCH ON THE SITE AS DIRECTED BY THE ENGINEER.
7. SAWCUTTING OF EXISTING PAVEMENT: SAWCUTTING, WHERE INDICATED ON THE DRAWINGS FOR REMOVAL OF EXISTING PAVEMENT, SHALL BE A FULL DEPTH CUT THAT IS NEAT AND TRUE IN ALIGNMENT.



NO.	REVISION	BY	DATE
 TOWN OF ADDISON DALLAS COUNTY, TEXAS			
PARK AND STREETSCAPE IMPROVEMENTS VITRUVIAN PARK			
DEMOLITION PLAN EAST			
icon Consulting Engineers, Inc. Civil Engineers - Designers - Planners		250 W. Southlake Blvd., Suite 117 Southlake, Tx 76092 (817) 552-6210	
PROJECT	DESIGN	DRAWN	DATE
5029-01	ICE	ICE	APR 26, 2010
			FILE
			PW# 2009-04
			SHEET
			C103

PARK AND STREETSCAPE IMPROVEMENTS - VITRUVIAN PARK