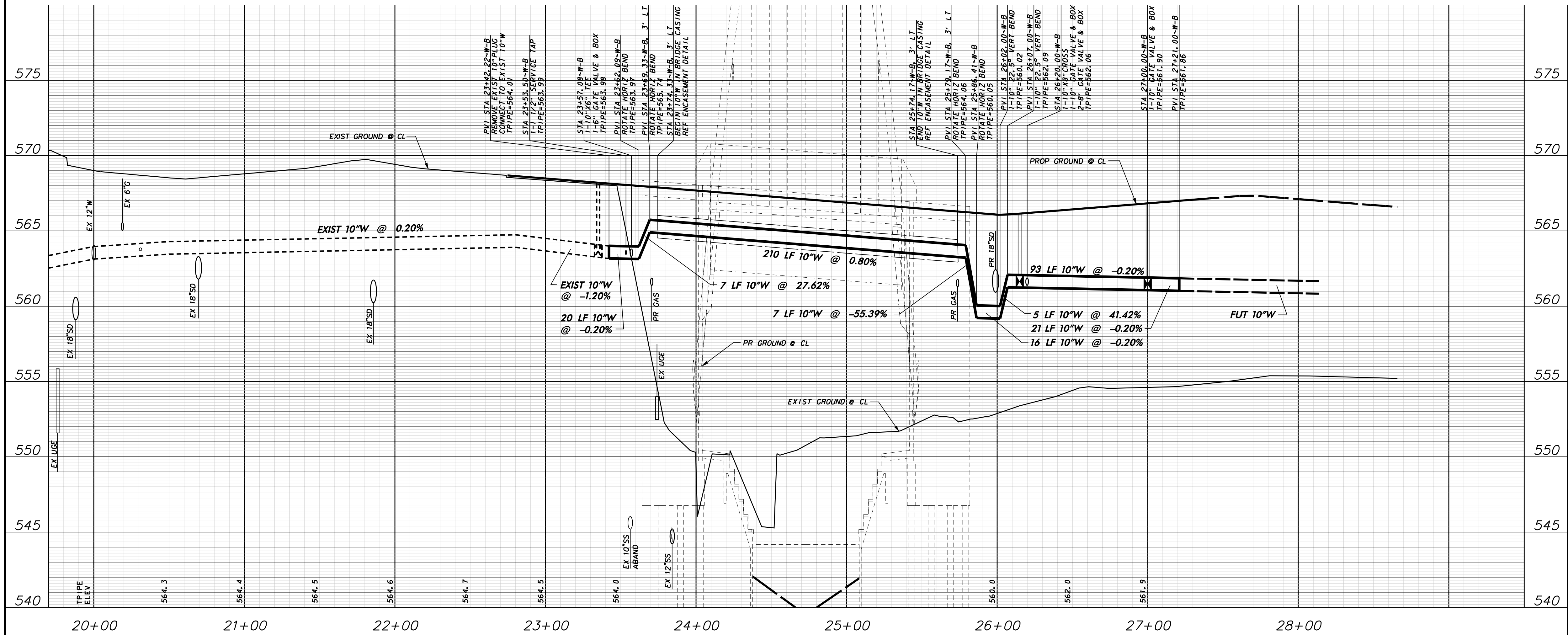


BM #1 REF. ELEVATION = 559.47
SQUARE CUT IN TOP OF CURB, SOUTH MEDIAN
END NOSE, MARSH LANE
1127' NORTH OF VITRUVIAN WAY.

BM #2 REF. ELEVATION = 547.84
SQUARE CUT IN TOP OF CURB, NORTH MEDIAN
END NOSE, AT INTERSECTION OF
VITRUVIAN WAY AND MARSH LANE.



WARNING

CONTRACTOR IS TO CONTACT TEXAS ONE-CALL SYSTEM (1-800-245-4545) OR OTHER UTILITY LOCATING SERVICES AT LEAST 48 HOURS PRIOR TO CONSTRUCTION ACTIVITIES. ICON CONSULTING ENGINEERS, INC. IS NOT RESPONSIBLE FOR KNOWING ALL EXISTING UTILITIES IN THE PROJECT AREA NOR FOR DEPICTING THE EXACT LOCATIONS OF UTILITIES ON THESE DRAWINGS.

BRUCE F. DUNNE
62654
LICENSED PROFESSIONAL ENGINEER

NO.	REVISION	BY	DATE

ADDISON TOWN OF ADDISON DALLAS COUNTY, TEXAS

PARK AND STREETSCAPE IMPROVEMENTS VITRUVIAN PARK

WATER LINE PLAN & PROFILE-PA LINE B-STA. 23+42.22 TO 27+21.00

icon Consulting Engineers, Inc. 250 W. Southlake Blvd., Suite 117 Southlake, Tx 76092 (817) 552-6210

PROJECT	DESIGN	DRAWN	DATE	FILE	SHEET
5029-01	ICE	ICE	APR 26, 2010	PW# 2009-04	C407

PARK AND STREETSCAPE IMPROVEMENTS - VITRUVIAN PARK