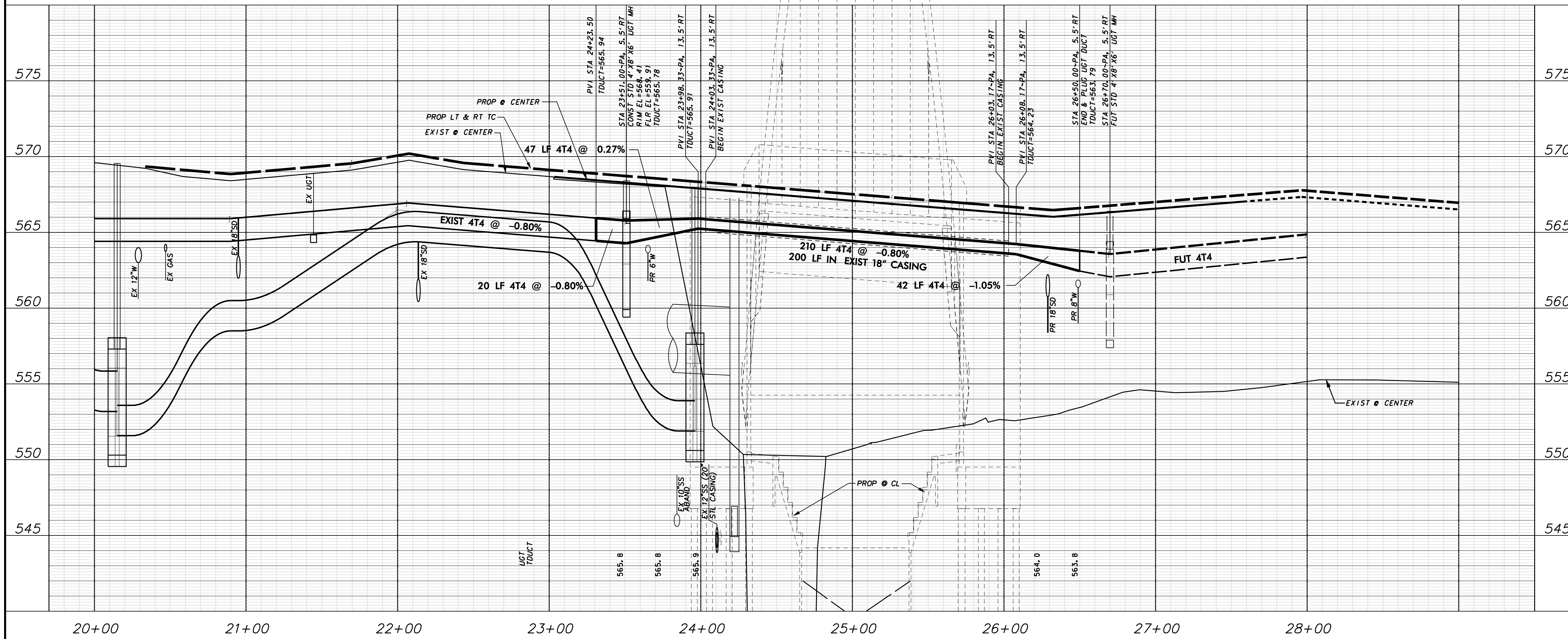


TELEPHONE DUCT NOTES

1. ALL WORK SHALL BE PERFORMED IN ACCORDANCE WITH THE STANDARD SPECIFICATIONS FOR MANHOLE AND DUCT STRUCTURE FACILITIES AS ESTABLISHED BY AT&T, LATEST EDITION, AND ANY AND ALL APPLICABLE SPECIFICATIONS AND REQUIREMENTS BY THE TOWN OF ADDISON.
2. THE CONTRACTOR MUST BE AN AT&T APPROVED CONTRACTOR OR BECOME AN AT&T APPROVED CONTRACTOR PRIOR TO CONSTRUCTION.
3. AT&T SHALL SUPPLY ALL UGT MANHOLES, MANHOLE NECKS, FRAME AND COVERS, MANHOLE RACKING AND 4" DUCT FOR THIS PROJECT. MATERIALS WILL BE DELIVERED TO A DESIGNATED ON-SITE STORAGE AREA FOR INSTALLATION BY THE CONTRACTOR.
4. THE CONTRACTOR SHALL SUPPLY ALL OTHER MATERIALS FOR THIS PROJECT NOT LISTED ABOVE INCLUDING BUT NOT LIMITED TO STEEL CASING, TIE-WRAPS, CONDUIT SPACERS, PVC ADHESIVE, CONCRETE, SELECT BACKFILL, PULL ROPES, ETC., PER AT&T SPECIFICATIONS UNLESS OTHERWISE SPECIFIED, IN WRITING.
5. THE CONTRACTOR SHALL INSTALL THE AT&T FURNISHED MANHOLE RACKING IN EACH MANHOLE.
6. THE AT&T INSPECTOR IS TO INSPECT ALL MANHOLE INSTALLATIONS PRIOR TO THE PLACING OF BACKFILL AND ALL CONDUIT INSTALLATIONS PRIOR TO THE PLACEMENT OF CONCRETE.
7. THE CONTRACTOR SHALL PROVIDE VERIFICATION OF COMPLETION AND COMPLIANCE OF ANY AND ALL REQUIRED TESTS TO THE SATISFACTION OF AT&T.
8. THE CONTRACTOR SHALL CONTACT AT&T TO REQUEST A FINAL WALK-THROUGH INSPECTION OF THE TELEPHONE DUCT BANK INFRASTRUCTURE WORK.
9. AT&T INSPECTOR SHALL BE NOTIFIED A MINIMUM OF 2 HOURS PRIOR TO THE DELIVERY OF CONCRETE AND SHALL BE PRESENT DURING PLACEMENT.

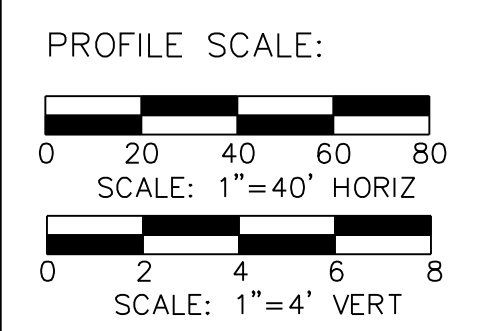


WARNING

CONTRACTOR IS TO CONTACT TEXAS ONE-CALL SYSTEM (1-800-245-4545) OR OTHER UTILITY LOCATING SERVICES AT LEAST 48 HOURS PRIOR TO CONSTRUCTION ACTIVITIES. ICON CONSULTING ENGINEERS, INC. IS NOT RESPONSIBLE FOR KNOWING ALL EXISTING UTILITIES IN THE PROJECT AREA NOR FOR DEPICING THE EXACT LOCATIONS OF UTILITIES ON THESE DRAWINGS.

BM #1 REF. ELEVATION = 559.47
 SQUARE CUT IN TOP OF CURB, SOUTH MEDIAN
 END NOSE, MARSH LANE
 1127' NORTH OF VITRUVIAN WAY.

BM #2 REF. ELEVATION = 547.84
 SQUARE CUT IN TOP OF CURB, NORTH MEDIAN
 END NOSE, AT INTERSECTION OF
 VITRUVIAN WAY AND MARSH LANE.



NO.	REVISION	BY	DATE

Addison! TOWN OF ADDISON
DALLAS COUNTY, TEXAS

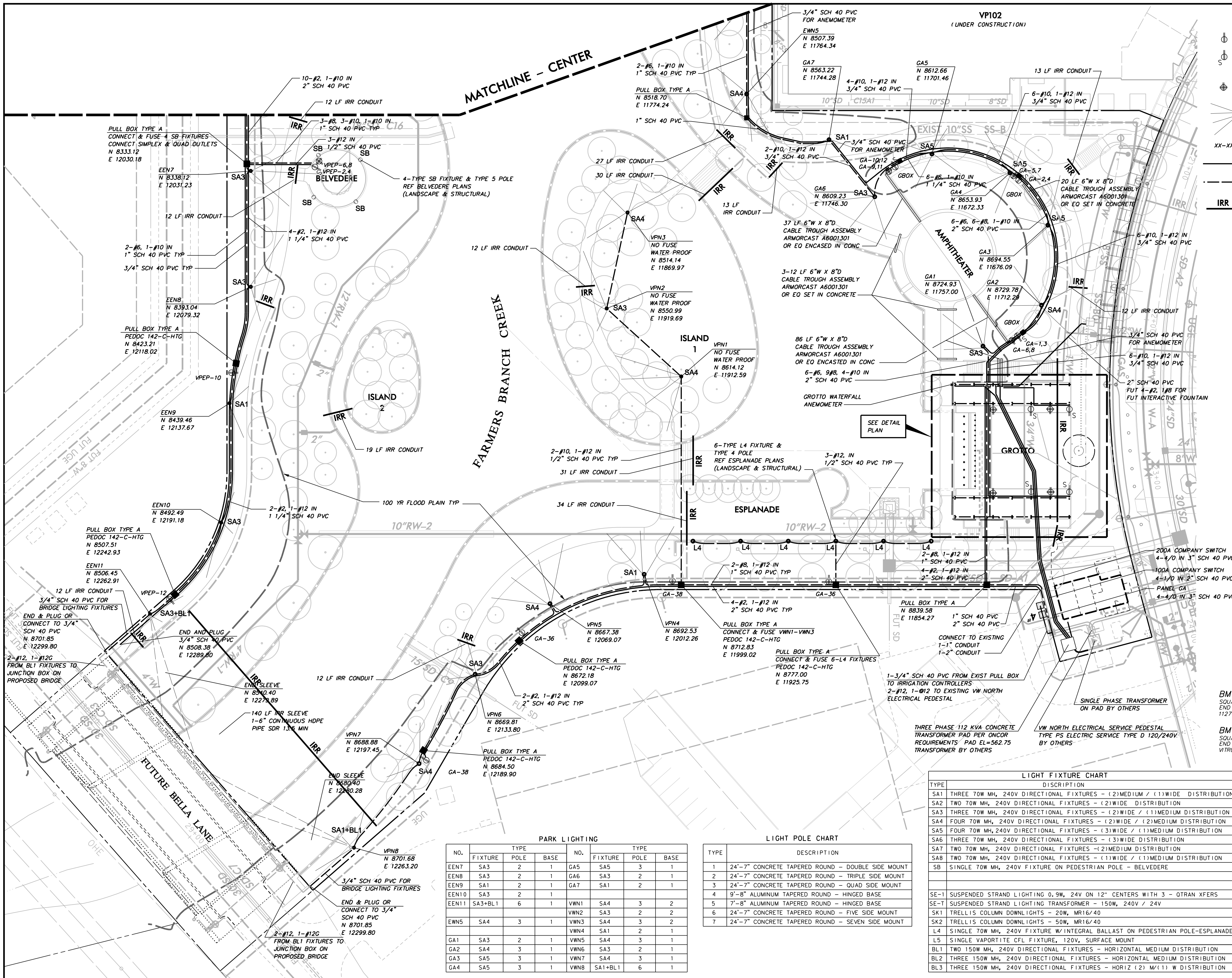
**PARK AND STREETSCAPE IMPROVEMENTS
VITRUVIAN PARK**

**DUCT BANK PLAN & PROFILE - PA
LINE B-STA. 23+31.00 TO 27+50.00**

icon Consulting Engineers, Inc. 250 W. Southlake Blvd., Suite 117
Civil Engineers - Designers - Planners Southlake, Tx 76092 (817) 552-6210

PROJECT	DESIGN	DRAWN	DATE	FILE	SHEET
5029-01	ICE	ICE	APR 26, 2010	PW# 2009-04	C410

PARK AND STREETSCAPE IMPROVEMENTS - VITRUVIAN PARK



LEGEND

- DULPEY 20A GFCI RECEPTACLE HUBBELL OFRS3625GW OR EO
- SIMPLEX 30A 120/240V 4 WIRE L14-30 LOCKING RECEPTACLE HUBBELL OR EO WITH WHILE-IN-USE WATERPROOF COVER
- QUAD (2) CIRCUIT 20A GFCI RECEPTACLE (2) HUBBELL OFRS3625GW OR EO WITH WHILE-IN-USE WATERPROOF COVER
- LIGHT POLE BASE AND FIXTURE TYPE
- PANEL DESIGNATION & CIRCUIT NUMBER
- POWER CONDUIT
- LIGHTING CONDUIT
- IRRIGATION SLEEVE - 1-6" & 1-2" SCH 40 PVC UNLESS OTHERWISE NOTED

LIGHTING, ELECTRICAL & CONDUIT NOTES

- REFER TO SHEET C100 "GENERAL CONSTRUCTION NOTES, LEGEND AND ABBREVIATIONS" FOR THE GENERAL CONSTRUCTION NOTES FOR THE PROJECT.
- REFER TO SHEET C804 FOR GENERAL ELECTRICAL NOTES FOR THE PROJECT.
- REFER TO SHEET C807 - ED(1)-03 FOR ELECTRIC DETAILS - CONDUIT, RIGID METAL CONDUIT ELBOWS ARE NOT REQUIRED.
- REFER TO SHEET C808 - ED(2)-03 FOR ELECTRIC DETAILS - CONDUCTORS.
- REFER TO SHEET C809 - ED(3)-03 FOR ELECTRIC DETAILS - GROUND BOXES. RIGID METAL CONDUIT ELBOWS ARE NOT REQUIRED. CONCRETE APPROX IS NOT REQUIRED.
- REFER TO SHEET C810 - ED(8)-03 FOR ELECTRIC DETAILS - ELECTRICAL SERVICE SUPPORT PEDESTAL SERVICE TYPE PS - PEDESTAL SERVICE SHALL BE ALUMINUM, COLOR GRAY. RIGID METAL ELBOWS ARE NOT REQUIRED.
- WATER, SANITARY SEWER, AND STORM DRAIN LINES ARE SHOWN FOR REFERENCE ONLY. CONTRACTOR SHALL LOCATE ALL UTILITY LINES IN THE AREA PRIOR TO DIGGING.
- ALL CONDUITS AT LIGHT POLE BASES TO BE WITHIN THE DRILLED SHAFT FOUNDATION. NO EXPOSED CONDUIT AT POLE BASES WILL BE ALLOWED.
- ALL CONDUITS, JBOXES, DEVICE BOXES, ETC. TO BE CONCEALED WITHIN THE STRUCTURES. NO EXPOSED CONDUITS WILL BE ALLOWED UNLESS IN CONCEALED OR OTHER APPROVED AREAS.
- CONNECTION TO POWER COMPANY CIRCUITS TO BE MADE ONLY BY POWER COMPANY.
- UNLESS OTHERWISE INDICATED ALL WORK SHALL CONFORM TO THE 2008 NATIONAL ELECTRICAL CODE (NFPA 70) AND THE 2007 NATIONAL ELECTRICAL SAFETY CODE (ANSI C2).
- ALL EMPTY CONDUIT INSTALLED FOR FUTURE EXTENSION SHALL BE TURNED UP AND EXTENDED UP TO FINISHED GRADE. CAP ENDS OF ALL CONDUITS.
- IRRIGATION SLEEVES "IRR" SHALL CONSIST OF 1-6" SCH 40 PVC AND 1-2" SCH 40 PVC INSTALLED WITH MINIMUM 24" COVER AND EXTENDING 2' BEYOND THE BACKS OF CURB OR EDGE OF PAVEMENT AND UP TO FINISHED GRADE. CAP ENDS OF ALL CONDUITS.

WARNING

CONTRACTOR IS TO CONTACT TEXAS ONE-CALL SYSTEM (1-800-245-4545) OR OTHER UTILITY LOCATING SERVICES AT LEAST 48 HOURS PRIOR TO CONSTRUCTION ACTIVITIES. ICON CONSULTING ENGINEERS, INC. IS NOT RESPONSIBLE FOR KNOWING ALL EXISTING UTILITIES IN THE PROJECT AREA NOR FOR DEPICTING THE EXACT LOCATIONS OF UTILITIES ON THESE DRAWINGS.

BM #1 REF. ELEVATION = 559.47
 SQUARE CUT IN TOP OF CURB, SOUTH MEDIAN
 END NOSE, MARSH LANE
 112' NORTH OF VITRUVIAN WAY.

BM #2 REF. ELEVATION = 547.84
 SQUARE CUT IN TOP OF CURB, NORTH MEDIAN
 END NOSE, AT INTERSECTION OF
 VITRUVIAN WAY AND MARSH LANE.



PARK LIGHTING

NO.	FIXTURE	POLE	BASE	NO.	FIXTURE	POLE	BASE
EEN7	SA3	2	1	GA5	SA5	3	1
EEN8	SA3	2	1	GA6	SA3	2	1
EEN9	SA1	2	1	GA7	SA1	2	1
EEN10	SA3	2	1				
EEN11	SA3+BL1	6	1	VWN1	SA4	3	2
				VWN2	SA3	2	2
EWN5	SA4	3	1	VWN3	SA4	3	2
				VWN4	SA1	2	1
GA1	SA3	2	1	VWN5	SA4	3	1
GA2	SA4	3	1	VWN6	SA3	2	1
GA3	SA5	3	1	VWN7	SA4	3	1
GA4	SA5	3	1	VWN8	SA1+BL1	6	1

LIGHT POLE CHART

TYPE	DESCRIPTION
1	24"-7" CONCRETE TAPERED ROUND - DOUBLE SIDE MOUNT
2	24"-7" CONCRETE TAPERED ROUND - TRIPLE SIDE MOUNT
3	24"-7" CONCRETE TAPERED ROUND - QUAD SIDE MOUNT
4	9"-8" ALUMINUM TAPERED ROUND - HINGED BASE
5	7"-8" ALUMINUM TAPERED ROUND - HINGED BASE
6	24"-7" CONCRETE TAPERED ROUND - FIVE SIDE MOUNT
7	24"-7" CONCRETE TAPERED ROUND - SEVEN SIDE MOUNT

LIGHT FIXTURE CHART

TYPE	DISCRPTION
SA1	THREE 70W MH, 240V DIRECTIONAL FIXTURES - (2)MEDIUM / (1)WIDE DISTRIBUTION
SA2	TWO 70W MH, 240V DIRECTIONAL FIXTURES - (2)WIDE DISTRIBUTION
SA3	THREE 70W MH, 240V DIRECTIONAL FIXTURES - (2)WIDE / (1)MEDIUM DISTRIBUTION
SA4	FOUR 70W MH, 240V DIRECTIONAL FIXTURES - (2)WIDE / (2)MEDIUM DISTRIBUTION
SA5	FOUR 70W MH, 240V DIRECTIONAL FIXTURES - (3)WIDE / (1)MEDIUM DISTRIBUTION
SA6	THREE 70W MH, 240V DIRECTIONAL FIXTURES - (3)WIDE DISTRIBUTION
SA7	TWO 70W MH, 240V DIRECTIONAL FIXTURES - (2)MEDIUM DISTRIBUTION
SA8	TWO 70W MH, 240V DIRECTIONAL FIXTURES - (1)WIDE / (1)MEDIUM DISTRIBUTION
SB	SINGLE 70W MH, 240V FIXTURE ON PEDESTRIAN POLE - BELVEDERE
SE-1	SUSPENDED STRAND LIGHTING 0.9W, 24V ON 12" CENTERS WITH 3 - OTRAN XFERS
SE-7	SUSPENDED STRAND LIGHTING TRANSFORMER - 150W, 240V / 24V
SK1	TRELLIS COLUMN DOWNLIGHTS - 20W, MR16/40
SK2	TRELLIS COLUMN DOWNLIGHTS - 50W, MR16/40
L4	SINGLE 70W MH, 240V FIXTURE W/INTEGRAL BALLAST ON PEDESTRIAN POLE-ESPLANADE
L5	SINGLE VAPORTITE CFL FIXTURE, 120V, SURFACE MOUNT
BL1	TWO 150W MH, 240V DIRECTIONAL FIXTURES - HORIZONTAL MEDIUM DISTRIBUTION
BL2	THREE 150W MH, 240V DIRECTIONAL FIXTURES - HORIZONTAL MEDIUM DISTRIBUTION
BL3	THREE 150W MH, 240V DIRECTIONAL FIXTURES - HORIZ (2) M / (1) W DISTRIBUTION

ADDISON TOWN OF ADDISON DALLAS COUNTY, TEXAS

PARK AND STREETSCAPE IMPROVEMENTS VITRUVIAN PARK

PARK LIGHTING & ELECTRICAL PLAN NORTH

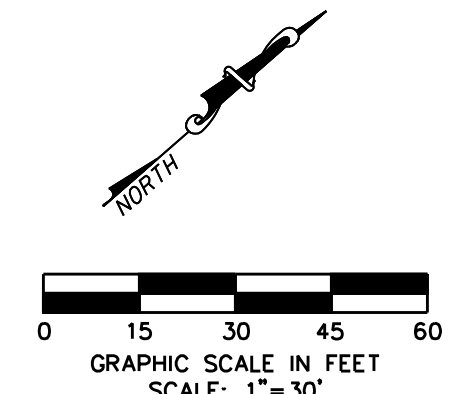
icon Consulting Engineers, Inc. 250 W. Southlake Blvd., Suite 117 Southlake, Tx 76092 (817) 552-6210
 Civil Engineers - Designers - Planners

PROJECT	DESIGN	DRAWN	DATE	FILE	SHEET
5029-01	ICE	ICE	APR 26, 2010	PW# 2009-04	C801

MATCHLINE - SOUTH

MATCHLINE - NORTH

- LEGEND**
- DULPEX 20A GFCI RECEPTACLE HUBBELL GFR53625GW OR EO
 - SIMPLEX 30A 120/240V 4 WIRE L14-30 LOCKING RECEPTACLE HUBBELL OR EO
 - WITH WHILE-IN-USE WATERPROOF COVER
 - QUAD (2) CIRCUIT 20A GFCI RECEPTACLE (2) HUBBELL GFR53625GW OR EO WITH WHILE-IN-USE WATERPROOF COVER
 - GRAPHIC SCALE IN FEET SCALE: 1"=30'
 - SAX LIGHT POLE BASE AND FIXTURE TYPE
 - XX-XX PANEL DESIGNATION & CIRCUIT NUMBER
 - POWER CONDUIT
 - LIGHTING CONDUIT
 - IRRIGATION SLEEVE - 1-6" & 1-2" SCH 40 PVC UNLESS OTHERWISE NOTED



LIGHTING, ELECTRICAL & CONDUIT NOTES

- REFER TO SHEET C100 "GENERAL CONSTRUCTION NOTES, LEGEND AND ABBREVIATIONS" FOR THE GENERAL CONSTRUCTION NOTES FOR THE PROJECT.
- REFER TO SHEET C804 FOR GENERAL ELECTRICAL NOTES FOR THE PROJECT.
- REFER TO SHEET C807 - ED (1)-03 FOR ELECTRIC DETAILS - CONDUIT. RIGID METAL CONDUIT ELBOWS ARE NOT REQUIRED.
- REFER TO SHEET C808 - ED (2)-03 FOR ELECTRIC DETAILS - CONDUCTORS.
- REFER TO SHEET C809 - ED (3)-03 FOR ELECTRIC DETAILS - GROUND BOXES. RIGID METAL CONDUIT ELBOWS ARE NOT REQUIRED. CONCRETE APRON IS NOT REQUIRED.
- REFER TO SHEET C810 - ED (8)-03 FOR ELECTRIC DETAILS - ELECTRICAL SERVICE SUPPORT PEDESTAL SERVICE TYPE PS. PEDESTAL SERVICE SHALL BE ALUMINUM, COLOR GRAY. RIGID METAL ELBOWS ARE NOT REQUIRED.
- WATER, SANITARY SEWER, AND STORM DRAIN LINES ARE SHOWN FOR REFERENCE ONLY. CONTRACTOR SHALL LOCATE ALL UTILITY LINES IN THE AREA PRIOR TO DIGGING.
- ALL CONDUITS AT LIGHT POLE BASES TO BE WITHIN THE DRILLED SHAFT FOUNDATION. NO EXPOSED CONDUIT AT POLE BASES WILL BE ALLOWED.
- ALL CONDUITS, JBOXES, DEVICE BOXES, ETC. TO BE CONCEALED WITHIN THE STRUCTURES. NO EXPOSED CONDUITS WILL BE ALLOWED UNLESS IN CONCEALED OR OTHER APPROVED AREAS.
- CONNECTION TO POWER COMPANY CIRCUITS TO BE MADE ONLY BY POWER COMPANY.
- UNLESS OTHERWISE INDICATED ALL WORK SHALL CONFORM TO THE 2008 NATIONAL ELECTRICAL CODE (NFPA 70) AND THE 2007 NATIONAL ELECTRICAL SAFETY CODE (ANSI C2).
- ALL EMPTY CONDUIT INSTALLED FOR FUTURE EXTENSION SHALL BE TURNED UP AND EXTENDED UP TO FINISHED GRADE. CAP ENDS OF ALL CONDUITS.
- IRRIGATION SLEEVES "IRR" SHALL CONSIST OF 1-6" SCH 40 PVC AND 1-2" SCH 40 PVC INSTALLED WITH MINIMUM 24" COVER AND EXTENDING 2' BEYOND THE BACKS OF CURB OR EDGE OF PAVEMENT AND UP TO FINISHED GRADE. CAP ENDS OF ALL CONDUITS.

WARNING

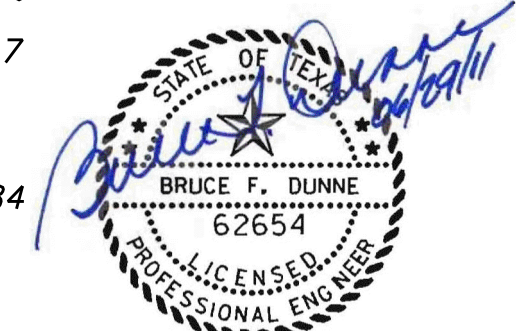
CONTRACTOR IS TO CONTACT TEXAS ONE-CALL SYSTEM (1-800-245-4545) OR OTHER UTILITY LOCATING SERVICES AT LEAST 48 HOURS PRIOR TO CONSTRUCTION ACTIVITIES. ICON CONSULTING ENGINEERS, INC. IS NOT RESPONSIBLE FOR KNOWING ALL EXISTING UTILITIES IN THE PROJECT AREA NOR FOR DEPICTING THE EXACT LOCATIONS OF UTILITIES ON THESE DRAWINGS.

BM #1 REF. ELEVATION = 559.47

SQUARE CUT IN TOP OF CURB, SOUTH MEDIAN END NOSE, MARSH LANE, 1127' NORTH OF VITRUVIAN WAY.

BM #2 REF. ELEVATION = 547.84

SQUARE CUT IN TOP OF CURB, NORTH MEDIAN END NOSE, AT INTERSECTION OF VITRUVIAN WAY AND MARSH LANE.



Addison TOWN OF ADDISON
DALLAS COUNTY, TEXAS

PARK AND STREETSCAPE IMPROVEMENTS
VITRUVIAN PARK

PARK LIGHTING & ELECTRICAL PLAN
CENTER

icon Consulting Engineers, Inc. 250 W. Southlake Blvd., Suite 117
Civil Engineers - Designers - Planners Southlake, TX 76092 (817) 552-6210

PROJECT	DESIGN	DRAWN	DATE	FILE	SHEET
5029-01	ICE	ICE	APR 26, 2010	PW# 2009-04	C802

RECORD DRAWINGS 06/18/12

LIGHT POLE CHART

TYPE	DESCRIPTION
1	24'-7" CONCRETE TAPERED ROUND - DOUBLE SIDE MOUNT
2	24'-7" CONCRETE TAPERED ROUND - TRIPLE SIDE MOUNT
3	24'-7" CONCRETE TAPERED ROUND - QUAD SIDE MOUNT
4	9'-8" ALUMINUM TAPERED ROUND - HINGED BASE
5	7'-8" ALUMINUM TAPERED ROUND - HINGED BASE
6	24'-7" CONCRETE TAPERED ROUND - FIVE SIDE MOUNT
7	24'-7" CONCRETE TAPERED ROUND - SEVEN SIDE MOUNT

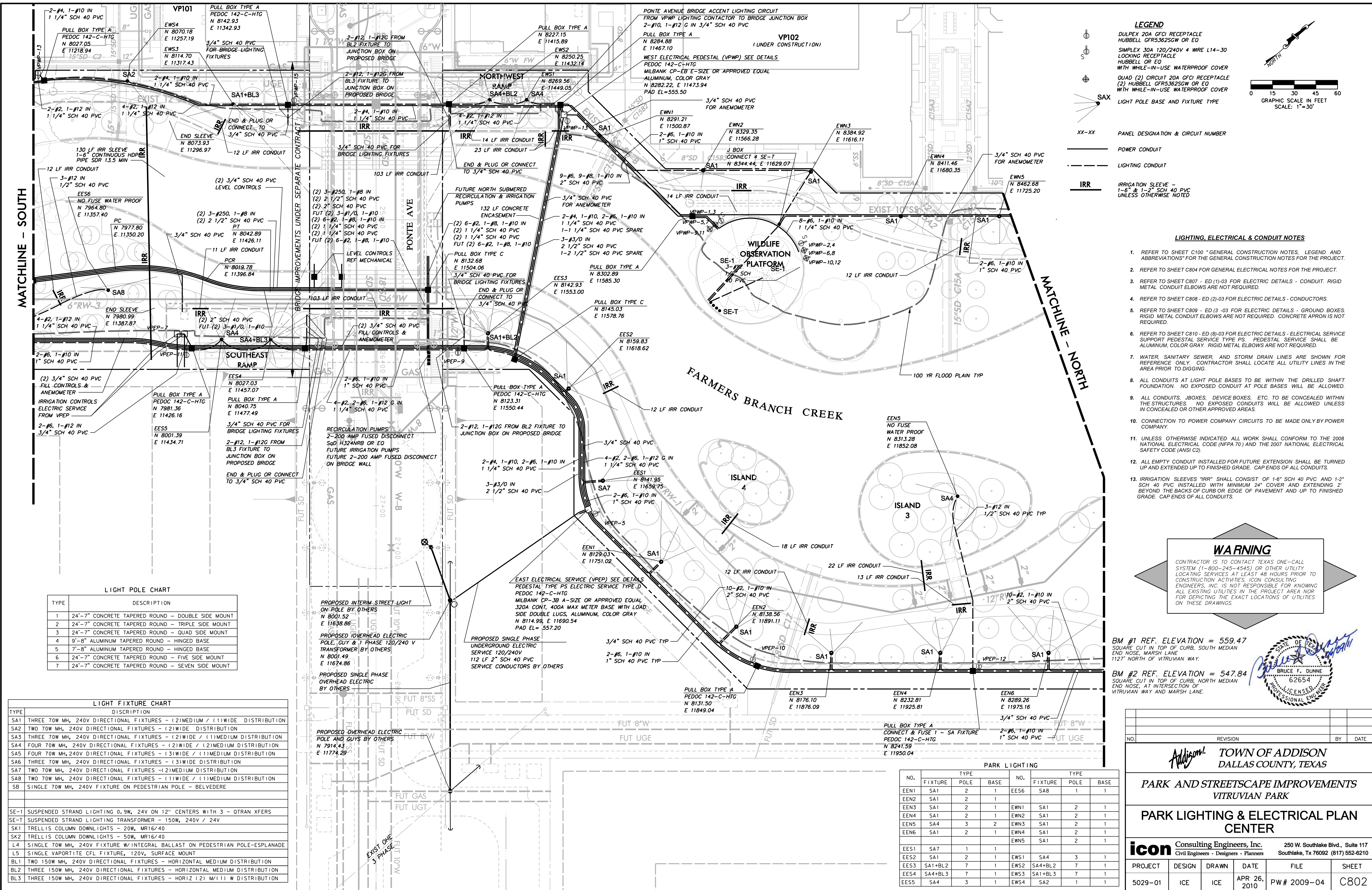
LIGHT FIXTURE CHART

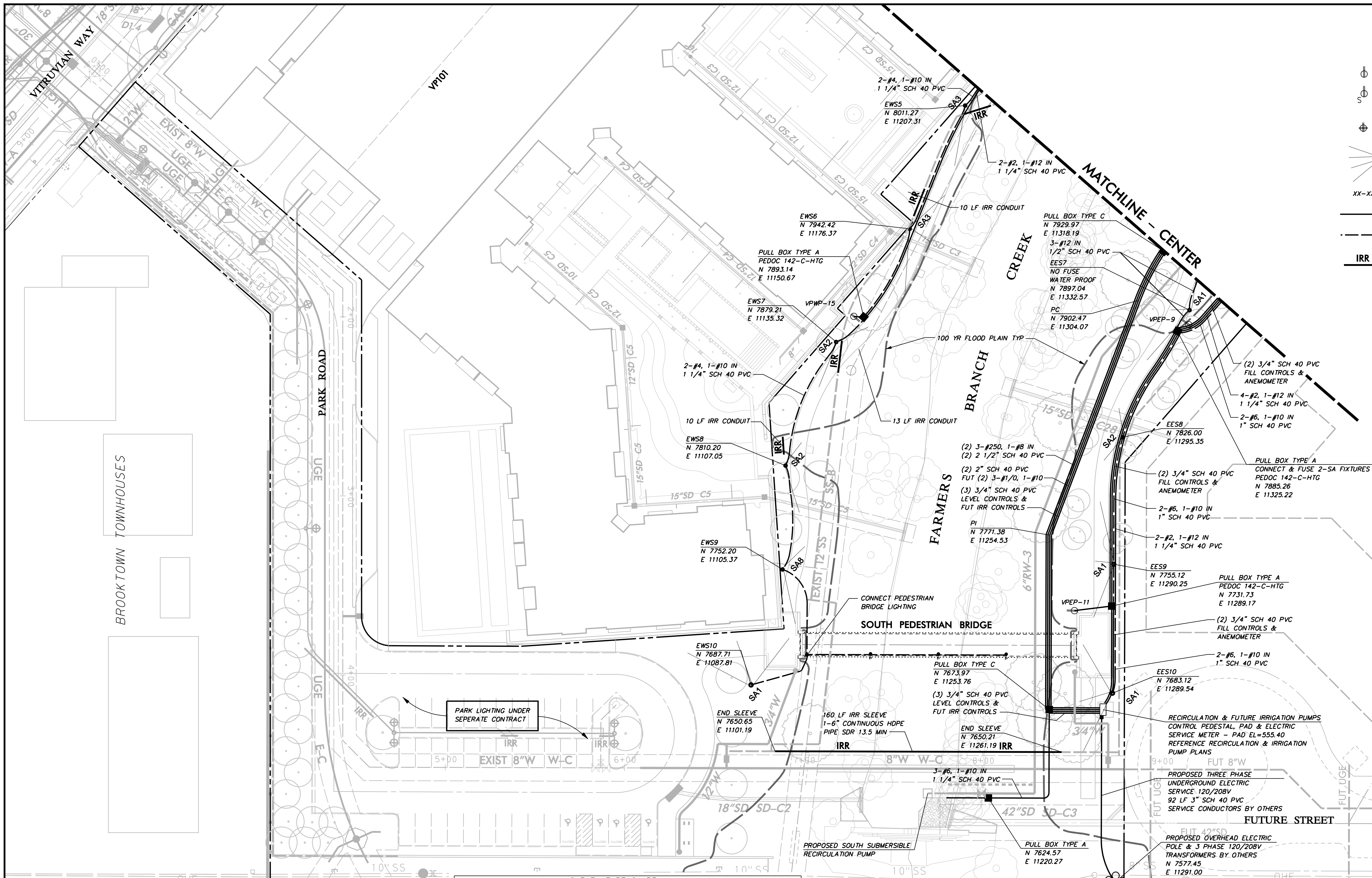
TYPE	DESCRIPTION
SA1	THREE 70W MH, 240V DIRECTIONAL FIXTURES - (2)MEDIUM / (1)WIDE DISTRIBUTION
SA2	TWO 70W MH, 240V DIRECTIONAL FIXTURES - (2)WIDE DISTRIBUTION
SA3	THREE 70W MH, 240V DIRECTIONAL FIXTURES - (2)WIDE / (1)MEDIUM DISTRIBUTION
SA4	FOUR 70W MH, 240V DIRECTIONAL FIXTURES - (2)WIDE / (2)MEDIUM DISTRIBUTION
SA5	FOUR 70W MH, 240V DIRECTIONAL FIXTURES - (3)WIDE / (1)MEDIUM DISTRIBUTION
SA6	THREE 70W MH, 240V DIRECTIONAL FIXTURES - (3)WIDE DISTRIBUTION
SA7	TWO 70W MH, 240V DIRECTIONAL FIXTURES - (2)MEDIUM DISTRIBUTION
SA8	TWO 70W MH, 240V DIRECTIONAL FIXTURES - (1)WIDE / (1)MEDIUM DISTRIBUTION
SB	SINGLE 70W MH, 240V FIXTURE ON PEDESTRIAN POLE - BELVEDERE

SE-1	SUSPENDED STRAND LIGHTING 0.9W, 24V ON 12" CENTERS WITH 3 - OTRAN XFERS
SE-T	SUSPENDED STRAND LIGHTING TRANSFORMER - 150W, 240V / 24V
SK1	TRELLIS COLUMN DOWNLIGHTS - 20W, MR16/40
SK2	TRELLIS COLUMN DOWNLIGHTS - 50W, MR16/40
L4	SINGLE 70W MH, 240V FIXTURE W/INTEGRAL BALLAST ON PEDESTRIAN POLE-ESPLANADE
L5	SINGLE VAPORTITE CFL FIXTURE, 120V, SURFACE MOUNT
BL1	TWO 150W MH, 240V DIRECTIONAL FIXTURES - HORIZONTAL MEDIUM DISTRIBUTION
BL2	THREE 150W MH, 240V DIRECTIONAL FIXTURES - HORIZONTAL MEDIUM DISTRIBUTION
BL3	THREE 150W MH, 240V DIRECTIONAL FIXTURES - HORIZ (2) M(1) W DISTRIBUTION

PARK LIGHTING

NO.	FIXTURE			NO.	FIXTURE		
	TYPE	POLE	BASE		TYPE	POLE	BASE
EEN1	SA1	2	1	EES6	SA8	1	1
EEN2	SA1	2	1	EWN1	SA1	2	1
EEN3	SA1	2	1	EWN2	SA1	2	1
EEN4	SA1	2	1	EWN3	SA1	2	1
EEN5	SA4	3	2	EWN4	SA1	2	1
EEN6	SA1	2	1	EWN5	SA1	2	1
EES1	SA7	1	1				
EES2	SA1	2	1	ESW1	SA4	3	1
EES3	SA1+BL2	7	1	ESW2	SA4+BL2	7	1
EES4	SA4+BL3	7	1	ESW3	SA1+BL3	7	1
EES5	SA4	3	1	ESW4	SA2	1	1





LEGEND

- DULPEX 20A GFCI RECEPTACLE
- HUBBELL GFR53625GW OR EO
- SIMPLEX 30A 120/240V 4 WIRE L14-30 LOCKING RECEPTACLE
- HUBBELL GFR53625GW OR EO WITH WHITE-IN-USE WATERPROOF COVER
- QUAD (2) CIRCUIT 20A GFCI RECEPTACLE
- HUBBELL GFR53625GW OR EO WITH WHITE-IN-USE WATERPROOF COVER
- LIGHT POLE BASE AND FIXTURE TYPE
- XX-XX PANEL DESIGNATION & CIRCUIT NUMBER
- POWER CONDUIT
- LIGHTING CONDUIT
- IRR IRRIGATION SLEEVE - 1-6" & 1-2" SCH 40 PVC UNLESS OTHERWISE NOTED

GRAPHIC SCALE IN FEET
SCALE: 1"=30'

- LIGHTING, ELECTRICAL & CONDUIT NOTES**
- REFER TO SHEET C100 "GENERAL CONSTRUCTION NOTES, LEGEND AND ABBREVIATIONS" FOR THE GENERAL CONSTRUCTION NOTES FOR THE PROJECT.
 - REFER TO SHEET C804 FOR GENERAL ELECTRICAL NOTES FOR THE PROJECT.
 - REFER TO SHEET C807 - ED(1)-03 FOR ELECTRIC DETAILS - CONDUIT. RIGID METAL CONDUIT ELBOWS ARE NOT REQUIRED.
 - REFER TO SHEET C808 - ED(2)-03 FOR ELECTRIC DETAILS - CONDUCTORS.
 - REFER TO SHEET C809 - ED(3)-03 FOR ELECTRIC DETAILS - GROUND BOXES. RIGID METAL CONDUIT ELBOWS ARE NOT REQUIRED. CONCRETE APRON IS NOT REQUIRED.
 - REFER TO SHEET C810 - ED(8)-03 FOR ELECTRIC DETAILS - ELECTRICAL SERVICE SUPPORT PEDESTAL SERVICE TYPE PS. PEDESTAL SERVICE SHALL BE ALUMINUM, COLOR GRAY. RIGID METAL ELBOWS ARE NOT REQUIRED.
 - WATER, SANITARY SEWER, AND STORM DRAIN LINES ARE SHOWN FOR REFERENCE ONLY. CONTRACTOR SHALL LOCATE ALL UTILITY LINES IN THE AREA PRIOR TO DIGGING.
 - ALL CONDUITS AT LIGHT POLE BASES TO BE WITHIN THE DRILLED SHAFT FOUNDATION. NO EXPOSED CONDUIT AT POLE BASES WILL BE ALLOWED.
 - ALL CONDUITS, JBOXES, DEVICE BOXES, ETC. TO BE CONCEALED WITHIN THE STRUCTURES. NO EXPOSED CONDUITS WILL BE ALLOWED UNLESS IN CONCEALED OR OTHER APPROVED AREAS.
 - CONNECTION TO POWER COMPANY CIRCUITS TO BE MADE ONLY BY POWER COMPANY.
 - UNLESS OTHERWISE INDICATED ALL WORK SHALL CONFORM TO THE 2008 NATIONAL ELECTRICAL CODE (NFPA 70) AND THE 2007 NATIONAL ELECTRICAL SAFETY CODE (ANSI C2).
 - ALL EMPTY CONDUIT INSTALLED FOR FUTURE EXTENSION SHALL BE TURNED UP AND EXTENDED UP TO FINISHED GRADE. CAP ENDS OF ALL CONDUITS.
 - IRRIGATION SLEEVES "IRR" SHALL CONSIST OF 1-6" SCH 40 PVC AND 1-2" SCH 40 PVC INSTALLED WITH MINIMUM 24" COVER AND EXTENDING 2' BEYOND THE BACKS OF CURB OR EDGE OF PAVEMENT AND UP TO FINISHED GRADE. CAP ENDS OF ALL CONDUITS.

WARNING

CONTRACTOR IS TO CONTACT TEXAS ONE-CALL SYSTEM (1-800-245-4545) OR OTHER UTILITY LOCATING SERVICES AT LEAST 48 HOURS PRIOR TO CONSTRUCTION ACTIVITIES. ICON CONSULTING ENGINEERS, INC. IS NOT RESPONSIBLE FOR KNOWING ALL EXISTING UTILITIES IN THE PROJECT AREA NOR FOR DEPICTING THE EXACT LOCATIONS OF UTILITIES ON THESE DRAWINGS.

BM #1 REF. ELEVATION = 559.47
SQUARE CUT IN TOP OF CURB, SOUTH MEDIAN
END NOSE, MARSH LANE
1127' NORTH OF VITRUVIAN WAY.

BM #2 REF. ELEVATION = 547.84
SQUARE CUT IN TOP OF CURB, NORTH MEDIAN
END NOSE, AT INTERSECTION OF
VITRUVIAN WAY AND MARSH LANE.



LIGHT FIXTURE CHART

TYPE	DESCRIPTION
SA1	THREE 70W MH, 240V DIRECTIONAL FIXTURES - (2)MEDIUM / (1)WIDE DISTRIBUTION
SA2	TWO 70W MH, 240V DIRECTIONAL FIXTURES - (2)WIDE DISTRIBUTION
SA3	THREE 70W MH, 240V DIRECTIONAL FIXTURES - (2)WIDE / (1)MEDIUM DISTRIBUTION
SA4	FOUR 70W MH, 240V DIRECTIONAL FIXTURES - (2)WIDE / (2)MEDIUM DISTRIBUTION
SA5	FOUR 70W MH, 240V DIRECTIONAL FIXTURES - (3)WIDE / (1)MEDIUM DISTRIBUTION
SA6	THREE 70W MH, 240V DIRECTIONAL FIXTURES - (3)WIDE DISTRIBUTION
SA7	TWO 70W MH, 240V DIRECTIONAL FIXTURES - (2)MEDIUM DISTRIBUTION
SA8	TWO 70W MH, 240V DIRECTIONAL FIXTURES - (1)WIDE / (1)MEDIUM DISTRIBUTION
SA9	SINGLE 70W MH, 240V FIXTURE ON PEDESTRIAN POLE - BELVEDERE
SE-1	SUSPENDED STRAND LIGHTING 0.9W, 24V ON 12" CENTERS WITH 3 - OTRAN XFERS
SE-T	SUSPENDED STRAND LIGHTING TRANSFORMER - 150W, 240V / 24V
SK1	TRELLIS COLUMN DOWNLIGHTS - 20W, MR16/40
SK2	TRELLIS COLUMN DOWNLIGHTS - 50W, MR16/40
L4	SINGLE 70W MH, 240V FIXTURE W/INTEGRAL BALLAST ON PEDESTRIAN POLE-ESPLANADE
L5	SINGLE VAPORTITE CFL FIXTURE, 120V, SURFACE MOUNT
BL1	TWO 150W MH, 240V DIRECTIONAL FIXTURES - HORIZONTAL MEDIUM DISTRIBUTION
BL2	THREE 150W MH, 240V DIRECTIONAL FIXTURES - HORIZONTAL MEDIUM DISTRIBUTION
BL3	THREE 150W MH, 240V DIRECTIONAL FIXTURES - HORIZ (2) M(1) W DISTRIBUTION

PARK LIGHTING

NO.	FIXTURE	TYPE	POLE	BASE	NO.	FIXTURE	TYPE	POLE	BASE
EES7	SA1	2	1		EWS10	SA1	2	1	
EES8	SA2	1	1						
EES9	SA1	2	1						
EES10	SA1	2	1						
EWS5	SA3	2	1						
EWS6	SA3	2	1						
EWS7	SA2	1	1						
EWS8	SA2	1	1						
EWS9	SA8	1	1						

LIGHT POLE CHART

TYPE	DESCRIPTION
1	24"-7" CONCRETE TAPERED ROUND - DOUBLE SIDE MOUNT
2	24"-7" CONCRETE TAPERED ROUND - TRIPLE SIDE MOUNT
3	24"-7" CONCRETE TAPERED ROUND - QUAD SIDE MOUNT
4	9"-8" ALUMINUM TAPERED ROUND - HINGED BASE
5	7"-8" ALUMINUM TAPERED ROUND - HINGED BASE
6	24"-7" CONCRETE TAPERED ROUND - FIVE SIDE MOUNT
7	24"-7" CONCRETE TAPERED ROUND - SEVEN SIDE MOUNT

REVISION

NO.	REVISION	BY	DATE

ADDISON TOWN OF ADDISON DALLAS COUNTY, TEXAS

PARK AND STREETSCAPE IMPROVEMENTS VITRUVIAN PARK

PARK LIGHTING & ELECTRICAL PLAN SOUTH

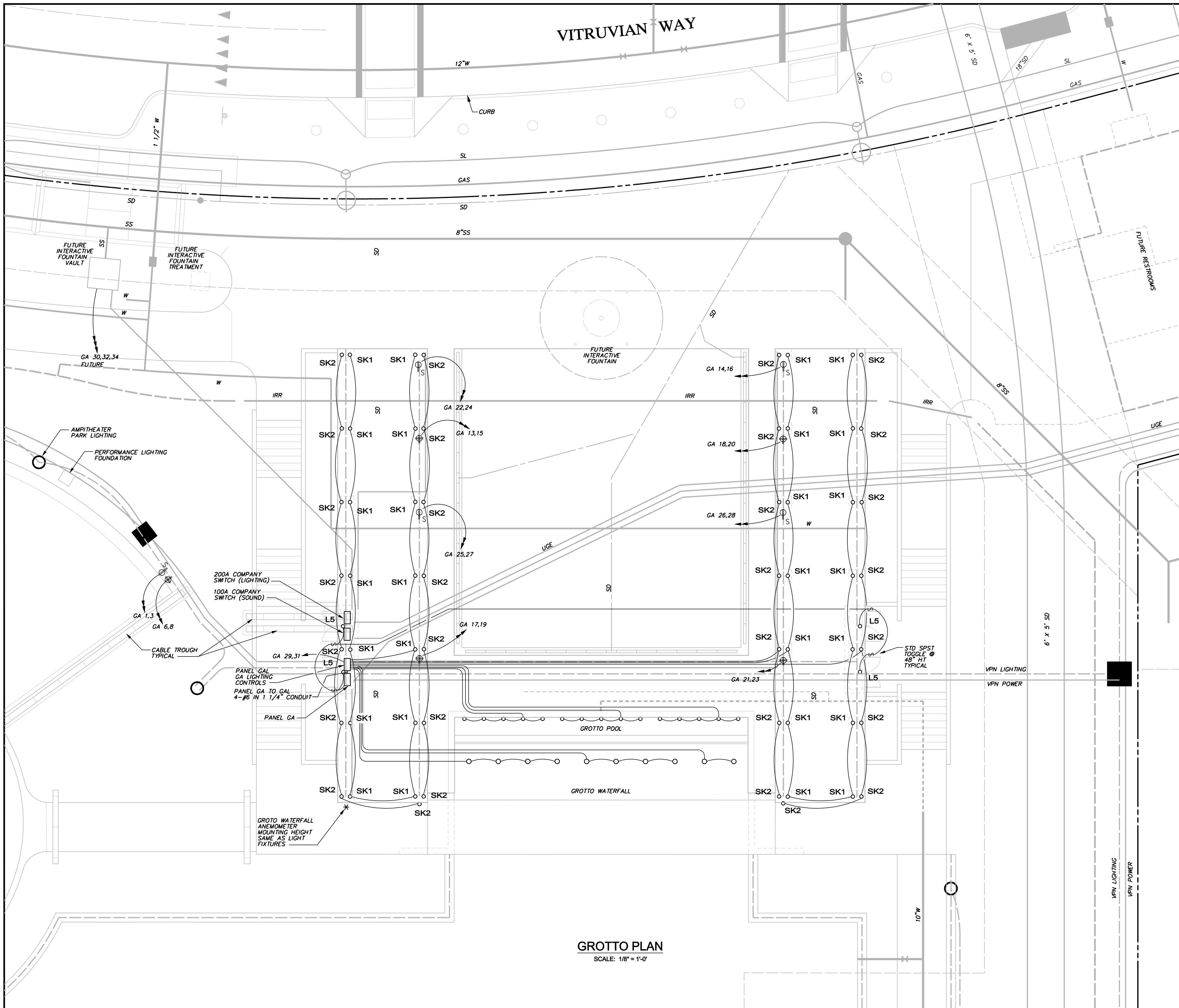
icon Consulting Engineers, Inc. 250 W. Southlake Blvd., Suite 117
Civil Engineers - Designers - Planners Southlake, TX 76092 (817) 552-6210

PROJECT	DESIGN	DRAWN	DATE	FILE	SHEET
5029-01	ICE	ICE	APR 26, 2010	PW# 2009-04	C803

RECORD DRAWINGS 06/18/12

PARK AND STREETSCAPE IMPROVEMENTS - VITRUVIAN PARK

VITRUVIAN WAY



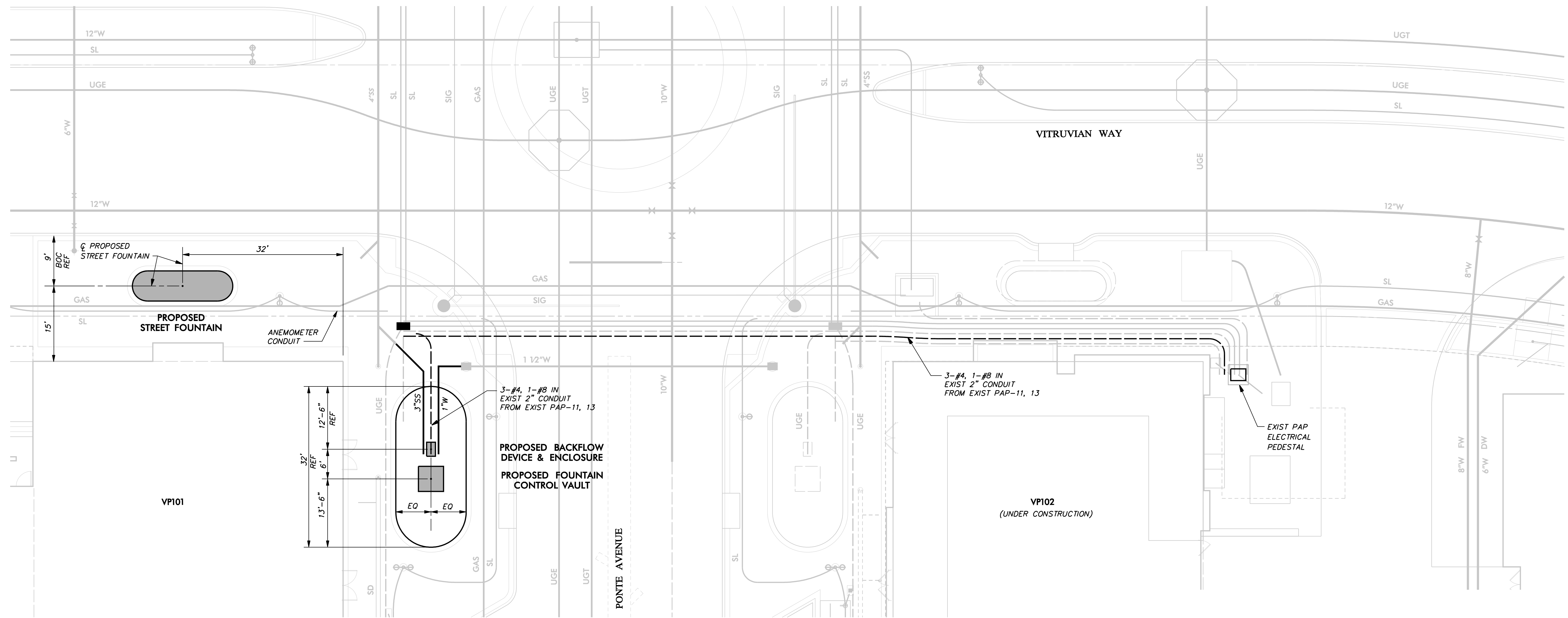
- LEGEND**
- DULPEX 20A GFCI RECEPTACLE
 - HUBBELL GFR5362SGW OR EO
 - SIMPLEX 30A 120/240V 4 WIRE L14-30 LOCKING RECEPTACLE
 - HUBBELL OR EO WITH WHITE-IN-USE WATERPROOF COVER
 - QUAD (2) CIRCUIT 20A GFCI RECEPTACLE
 - (2) HUBBELL GFR5362SGW OR EO WITH WHITE-IN-USE WATERPROOF COVER
 - LIGHT POLE BASE AND FIXTURE TYPE
 - XX-XX PANEL DESIGNATION & CIRCUIT NUMBER
 - POWER CONDUIT
 - LIGHTING CONDUIT
 - IRR IRRIGATION SLEEVE - 1-6" & 1-2" SCH 40 PVC UNLESS OTHERWISE NOTED



GROTTO PLAN
SCALE: 1/8" = 1'-0"

NO.	REVISION	BY	DATE
TOWN OF ADDISON DALLAS COUNTY, TEXAS			
PARK AND STREETSCAPE IMPROVEMENTS VITRUVIAN PARK			
PARK LIGHTING & ELECTRICAL PLAN GROTTO			
icon Consulting Engineers, Inc. Civil Engineers - Designers - Planners		250 W. Southlake Blvd., Suite 117 Southlake, Tx 76092 (817) 552-6210	
PROJECT	DESIGN	DRAWN	DATE
5029-01	ICE	ICE	APR 26, 2010
			FILE
			PW # 2009-04
			SHEET
			C805

PARK AND STREETSCAPE IMPROVEMENTS - VITRUVIAN PARK

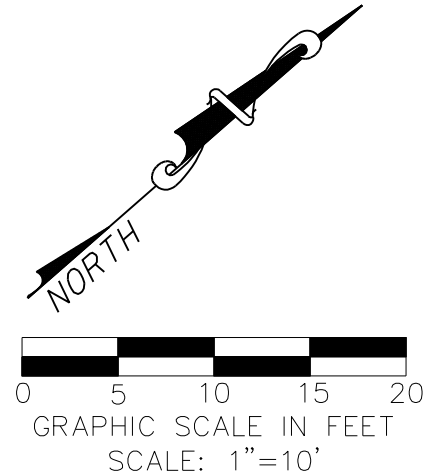


WARNING

CONTRACTOR IS TO CONTACT TEXAS ONE-CALL SYSTEM (1-800-245-4545) OR OTHER UTILITY LOCATING SERVICES AT LEAST 48 HOURS PRIOR TO CONSTRUCTION ACTIVITIES. ICON CONSULTING ENGINEERS, INC. IS NOT RESPONSIBLE FOR KNOWING ALL EXISTING UTILITIES IN THE PROJECT AREA NOR FOR DEPICTING THE EXACT LOCATIONS OF UTILITIES ON THESE DRAWINGS.

BM #1 REF. ELEVATION = 559.47
SQUARE CUT IN TOP OF CURB, SOUTH MEDIAN
END NOSE, MARSH LANE
1127' NORTH OF VITRUVIAN WAY.

BM #2 REF. ELEVATION = 547.84
SQUARE CUT IN TOP OF CURB, NORTH MEDIAN
END NOSE, AT INTERSECTION OF
VITRUVIAN WAY AND MARSH LANE.



NO.	REVISION	BY	DATE
TOWN OF ADDISON DALLAS COUNTY, TEXAS			
PARK AND STREETSCAPE IMPROVEMENTS VITRUVIAN PARK			
LAYOUT & ELECTRICAL PLAN STREET FOUNTAIN			
icon Consulting Engineers, Inc. 250 W. Southlake Blvd., Suite 117 Civil Engineers - Designers - Planners Southlake, Tx 76092 (817) 552-6210			
PROJECT	DESIGN	DRAWN	DATE
5029-01	ICE	ICE	APR 26, 2010
			FILE
			PW# 2009-04
			SHEET
			C811