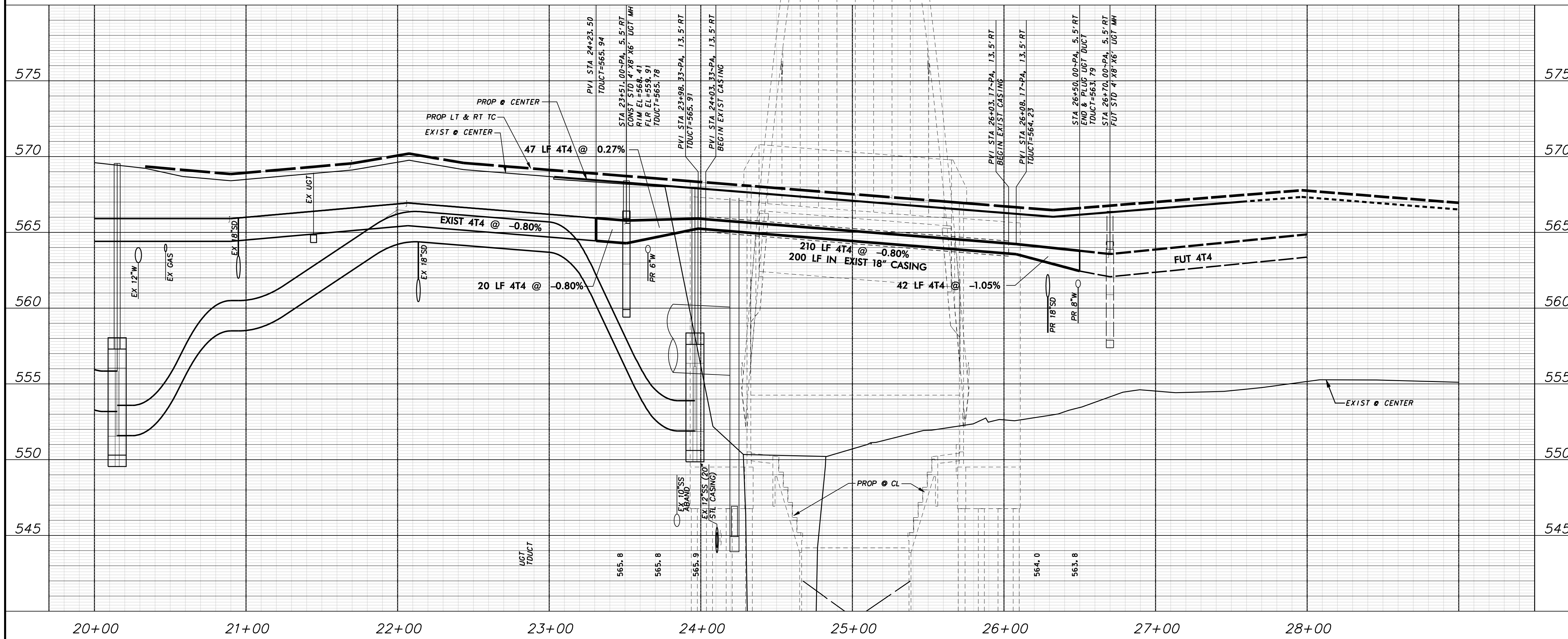


TELEPHONE DUCT NOTES

1. ALL WORK SHALL BE PERFORMED IN ACCORDANCE WITH THE STANDARD SPECIFICATIONS FOR MANHOLE AND DUCT STRUCTURE FACILITIES AS ESTABLISHED BY AT&T, LATEST EDITION, AND ANY AND ALL APPLICABLE SPECIFICATIONS AND REQUIREMENTS BY THE TOWN OF ADDISON.
2. THE CONTRACTOR MUST BE AN AT&T APPROVED CONTRACTOR OR BECOME AN AT&T APPROVED CONTRACTOR PRIOR TO CONSTRUCTION.
3. AT&T SHALL SUPPLY ALL UGT MANHOLES, MANHOLE NECKS, FRAME AND COVERS, MANHOLE RACKING AND 4" DUCT FOR THIS PROJECT. MATERIALS WILL BE DELIVERED TO A DESIGNATED ON-SITE STORAGE AREA FOR INSTALLATION BY THE CONTRACTOR.
4. THE CONTRACTOR SHALL SUPPLY ALL OTHER MATERIALS FOR THIS PROJECT NOT LISTED ABOVE INCLUDING BUT NOT LIMITED TO STEEL CASING, TIE-WRAPS, CONDUIT SPACERS, PVC ADHESIVE, CONCRETE, SELECT BACKFILL, PULL ROPES, ETC., PER AT&T SPECIFICATIONS UNLESS OTHERWISE SPECIFIED, IN WRITING.
5. THE CONTRACTOR SHALL INSTALL THE AT&T FURNISHED MANHOLE RACKING IN EACH MANHOLE.
6. THE AT&T INSPECTOR IS TO INSPECT ALL MANHOLE INSTALLATIONS PRIOR TO THE PLACING OF BACKFILL AND ALL CONDUIT INSTALLATIONS PRIOR TO THE PLACEMENT OF CONCRETE.
7. THE CONTRACTOR SHALL PROVIDE VERIFICATION OF COMPLETION AND COMPLIANCE OF ANY AND ALL REQUIRED TESTS TO THE SATISFACTION OF AT&T.
8. THE CONTRACTOR SHALL CONTACT AT&T TO REQUEST A FINAL WALK-THROUGH INSPECTION OF THE TELEPHONE DUCT BANK INFRASTRUCTURE WORK.
9. AT&T INSPECTOR SHALL BE NOTIFIED A MINIMUM OF 2 HOURS PRIOR TO THE DELIVERY OF CONCRETE AND SHALL BE PRESENT DURING PLACEMENT.

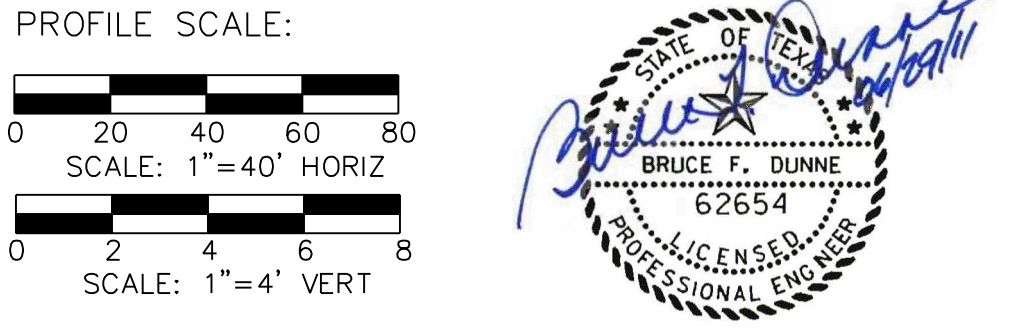


WARNING

CONTRACTOR IS TO CONTACT TEXAS ONE-CALL SYSTEM (1-800-245-4545) OR OTHER UTILITY LOCATING SERVICES AT LEAST 48 HOURS PRIOR TO CONSTRUCTION ACTIVITIES. ICON CONSULTING ENGINEERS, INC. IS NOT RESPONSIBLE FOR KNOWING ALL EXISTING UTILITIES IN THE PROJECT AREA NOR FOR DEPICING THE EXACT LOCATIONS OF UTILITIES ON THESE DRAWINGS.

BM #1 REF. ELEVATION = 559.47
 SQUARE CUT IN TOP OF CURB, SOUTH MEDIAN
 END NOSE, MARSH LANE
 1127' NORTH OF VITRUVIAN WAY.

BM #2 REF. ELEVATION = 547.84
 SQUARE CUT IN TOP OF CURB, NORTH MEDIAN
 END NOSE, AT INTERSECTION OF
 VITRUVIAN WAY AND MARSH LANE.



NO.	REVISION	BY	DATE

Addison! TOWN OF ADDISON
 DALLAS COUNTY, TEXAS

**PARK AND STREETSCAPE IMPROVEMENTS
 VITRUVIAN PARK**

**DUCT BANK PLAN & PROFILE - PA
 LINE B-STA. 23+31.00 TO 27+50.00**

icon Consulting Engineers, Inc.		250 W. Southlake Blvd., Suite 117			
Civil Engineers - Designers - Planners		Southlake, Tx 76092 (817) 552-6210			
PROJECT	DESIGN	DRAWN	DATE	FILE	SHEET
5029-01	ICE	ICE	APR 26, 2010	PW# 2009-04	C410

PARK AND STREETSCAPE IMPROVEMENTS - VITRUVIAN PARK